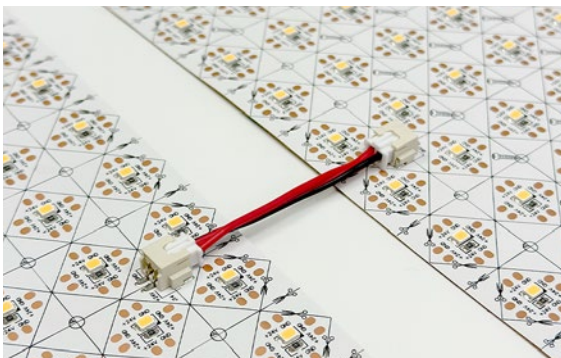




White LED Light Sheets

Product Data Sheet

The Flexfire LED Light Sheets are thin and flexible lighting sheets that incorporate LEDs to produce bright, even illumination across its surface. Their high brightness, great color rendering and versatility, make them an ideal solution for a wide range of installations. They are commonly used for various applications such as backlighting, signage, and architectural lighting, providing a sleek and energy-efficient solution for uniform lighting. These light sheets are customizable to different shapes and very easy to use.



Features

CCT	3000K / 5000K
CRI	High CRI of up to 94
R9 and R13 Values	High R9 (75) and R13 (95)
Voltage	24V DC Input
Brightness	Up to 3064 lm
Efficacy	Up to 103 lm/W
LEDs/Sheet	288 LEDs/Sheet
Beam Angle	120° Beam Angle
LED Pitch	13/16" (20 mm)
Cutting Points	13/16" (20 mm)
Max Run Length in Series*	Up to 6 Sheets
PCB	2 oz copper
LED Size	2835
Adhesive Type	3M LSE 9495
Ambient Temperature	-4°F to 113°F (-20°C to 45°C)
Operating Temperature	-4°F to 149°F (-20°C to 65°C)
Dimmable	Yes
IP Rating	IP20



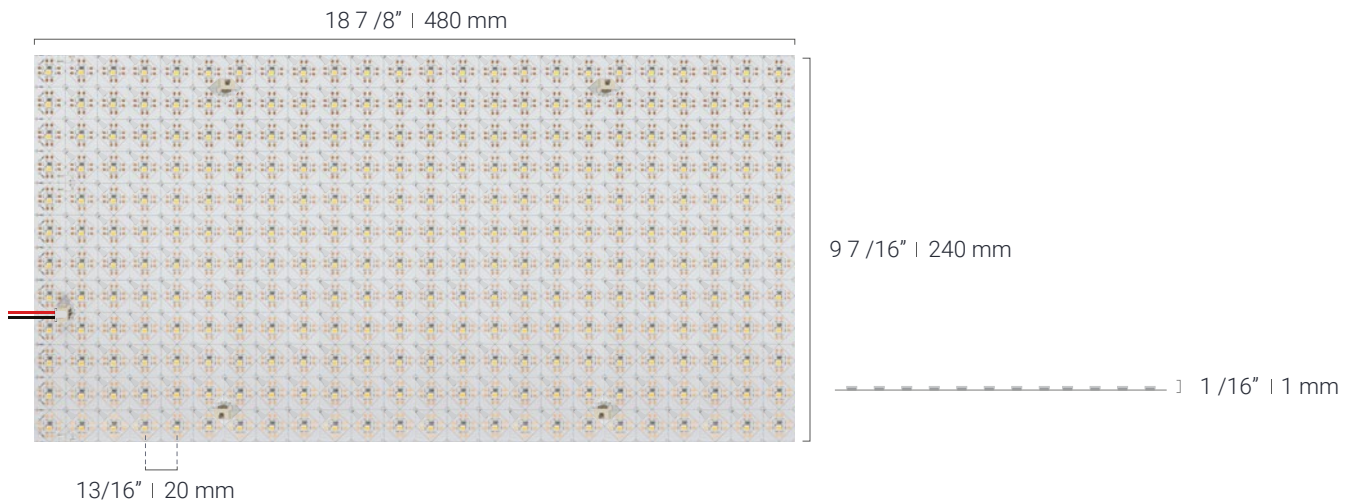
5-Year
Warranty

*To be in compliance with Class 2 and our UL Listing, the maximum run length of the light sheets may not exceed 3 light sheets daisy chained in a continuous run. However, in terms of sheer voltage drop and reduction in brightness, the light sheets are able to be run up to 6 continuous sheets which would be outside the parameters of our UL certification.

Ordering Code

Brand: **LST** (Light Sheets) - CCT: **30K - 3000K** / **50K - 5000K** - Voltage: **24V** Example: LST-30K-24V

Dimensions



Specifications

Product SKU	Color* (CCT)	Watts / Foot (Meter)	Lumen / Foot (Meter)	Luminous Efficacy (Lumens / Watt)	CRI	Gamut Score Rg (Color Sat.)	Relative Fidelity Score (RF)	TLCI (Qa)
LST-30K	3000K	29 W	2940 lm	98 lm/W	93	99	90	94
LST-50K	5000K	29 W	3064 lm	103 lm/W	94	98	88	96

*CCT may be +/-100K but always ordered from same bin and will present no noticeable differences perceived by the human eye.

Complete Your Setup

Drivers



Controllers & Dimmers



Connectors



Compatible Drivers (24V)

Non-dimmable					
Power Supply	Diagram	# of Light Sheets	Watts	Product SKU	Class 2
Plug-In Power Supply Plug-and-Play Power Supply		1	60 W	24V-DPS2-2.5	X
		1 - 2	96 W	24V-DPS2-4	X
		2 - 3	120 W	24V-DPS2-5	
Mean Well™ HLG Hardwired Power Supply		1	60 W	HLG-60H-24A	X
		1 - 3	96 W	HLG-100H-24A	X
		4 - 5	185 W	HLG-185H-24A	
		6 - 9	320 W	HLG-320H-24A	
		10 - 18	600 W	HLG-600H-24A	
Mean Well™ LPV Hardwired Power Supply		1	60 W	LPV-60-24	X
Dimmable					
Power Supply	Diagram	# of Light Sheets	Watts	Product SKU	Class 2
Zurik® EMLV Hardwired Power Supply		1	60 W	ZRK-EMLV2-60W-24VDC	X
Zurik® Universal Hardwired Power Supply		1	60 W	ZRK-UNV-60W-24VDC	X
		1 - 3	96 W	ZRK-UNV-96W-24VDC	X
		2 - 3	120 W	ZRK-UNV-120W-24VDC	
		4 - 6	200 W	ZRK-UNV-200W-24VDC	
		7 - 9	300 W	ZRK-UNV-300W-24VDC	
		1 - 4 (up to 2/output)	192 W	ZRK-UNV-C192W-24VDC	X
		5 - 8 (up to 2/output)	384 W	ZRK-UNV-C384W-24VDC	X
Lutron® Hi-Lume™ Premier Hardwired Power Supply		1 - 2	96W	L3D0-96W24V-U	X
		Dimming Range: 0.1-100%			

[See Power Supplies Selector](#)

Controller Options

Handheld Remotes



Wall Dimmers

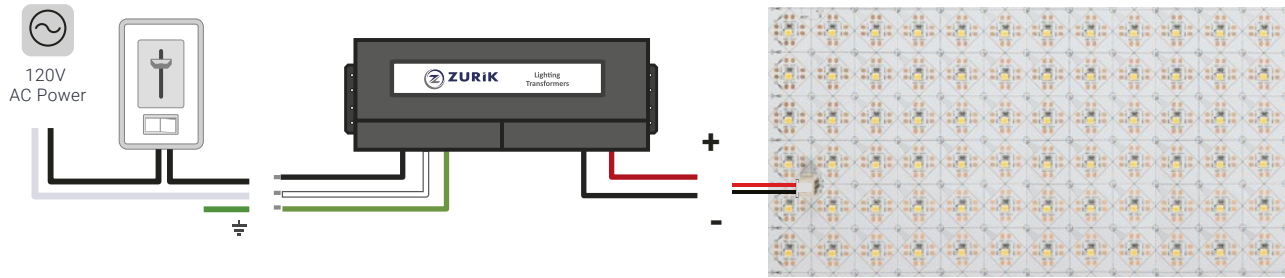


Smart Home Controllers

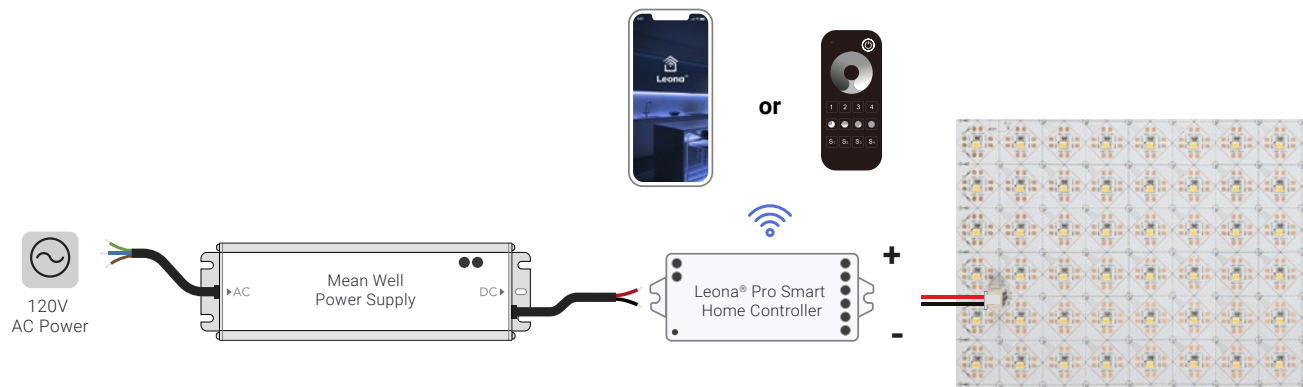


See Controllers and Dimmers


Lutron Style Wall Dimmer

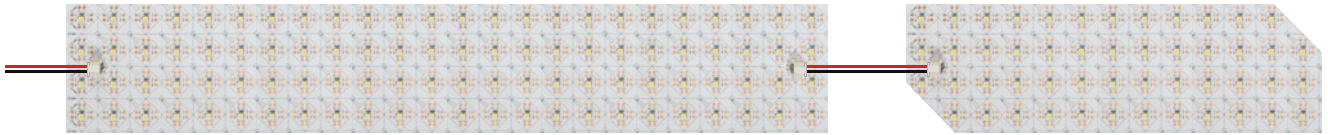


In-Line Dimming



Light Sheets Connectors:

Connector Type	SKU	Description	Wire Gauge	Diagram
Light Sheet Connectors	LST-CONN-KIT	12" Light Sheet Power Connector 2 1/2" Jumper Connector	22 AWG	



Applications Examples



Safety And Disclosures

01. Installation must be in accordance with local and national electrical code regulations.
02. To ensure safety and correct installation, our strips are intended to be installed by a qualified, licensed electrician.
03. Only install with a Class 2 DC Constant Voltage LED driver to meet UL requirements.
04. Do not install in environment where excessive heat may exist.
05. LED light sheets must be handled with care. Excessive handling, bending, and pressure may damage the product, voiding the warranty.
06. Do not install indoor LED light sheets in outdoor / wet location environments. Only use copper wiring. Use wires rated for at least 176°F (80°C) and certified for use with external connection of electrical equipment.
07. Each maximum run requires a dedicated power feed from the driver. Do not extend beyond the recommended maximum run length.
08. Make sure the appropriate gauge wire is installed between LED driver, LEDs, and any dimmers. When choosing wire, calculate voltage drop, maximum amperage rating, and the location ratings on the wire. Improper wire selection and installation could overheat wires, and cause fire.
09. Do not modify product beyond instructions or warranty will be void.
10. We reserve the right to modify and improve the design of our fixtures without prior notice. Although we try our best to order the same colors every time, due to changes in technology and phosphors over time, we cannot guarantee to match existing installed fixtures for subsequent orders or replacements in regards to product appearance, CCT, or lumen output.

Warranty Information

Limited Warranty

This product has a 5-year limited warranty from the date of shipment. This warranty only includes the main product outlined in this specification sheet and does not include the additional accessories that are used as a reference. Complete warranty details for fixtures and additional accessories are available at <https://www.flexfireleds.com/warranties/> within the Policies section. For warranty related questions, please, contact the product support team at (support@flexfireleds.com).

Consumer's Acknowledgment

Flexfire LEDs, Inc. stands behind its products when they are used properly and according to our specifications. When you purchase our products, you are agreeing to the terms and conditions outlined in our warranty section. We try our best to make recommendations, but the burden of proper installation, design, and maintenance relies on the purchaser. This limited warranty does not include product failures that are the result of: Connecting LED products to the wrong output voltage; Improper connection of power, LED products, or controls; Connecting LED products or controls directly to any AC power source if they are stated for DC only input; Connecting power backwards to an AC power source; Products used in an inappropriate location or in environmental conditions (temperature, humidity, moisture, etc.) outside the normal specified range; Water damage to products not specifically sold as waterproof products; Electrical power surges and spikes; Damage from hail, flooding, tornado, fire, wind, earthquake, lightning, electrical storm, or any other natural disasters or "force majeure" incidences; Damage caused by a vehicle or other accident; Damage caused when transporting the item; Damage to any products that were modified by the user, used for purposes other than as intended or directed, or connected to LED systems or components not purchased from Flexfire LEDs; Products that have been subjected to misuse, mishandling, misapplication or accident. Products used in connection with any components, devices or systems other than those explicitly approved as compatible with Company's products and listed on Company's website. Excessive wear and tear and/or physical or accidental abuse, loss, or theft. Improper repairs or warranty services performed by someone other than Flexfire LEDs will void this warranty.

Contact Information



Toll Free Number:
1-844-353-9347



Local Number:
(925) 273-9080



info@flexfireleds.com



FLEXFIRELEDs

www.flexfireleds.com