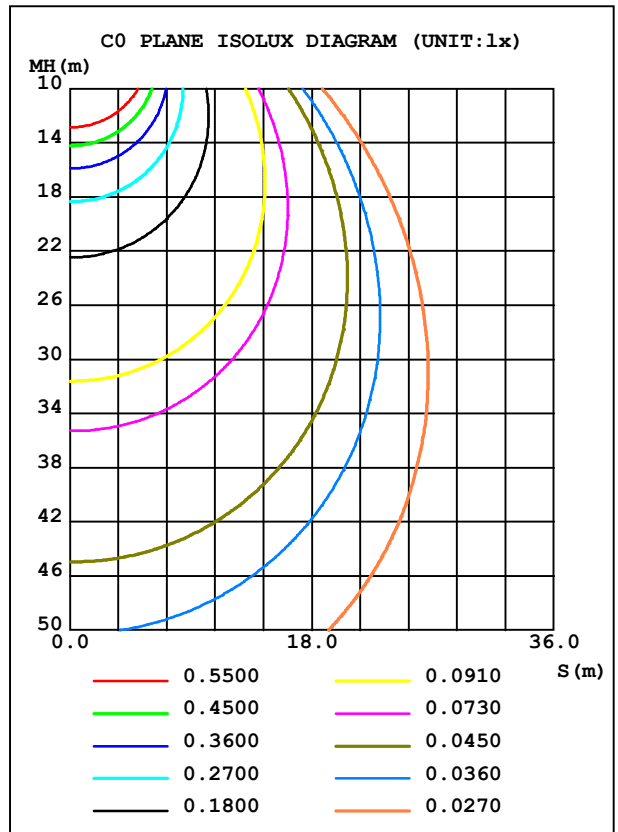
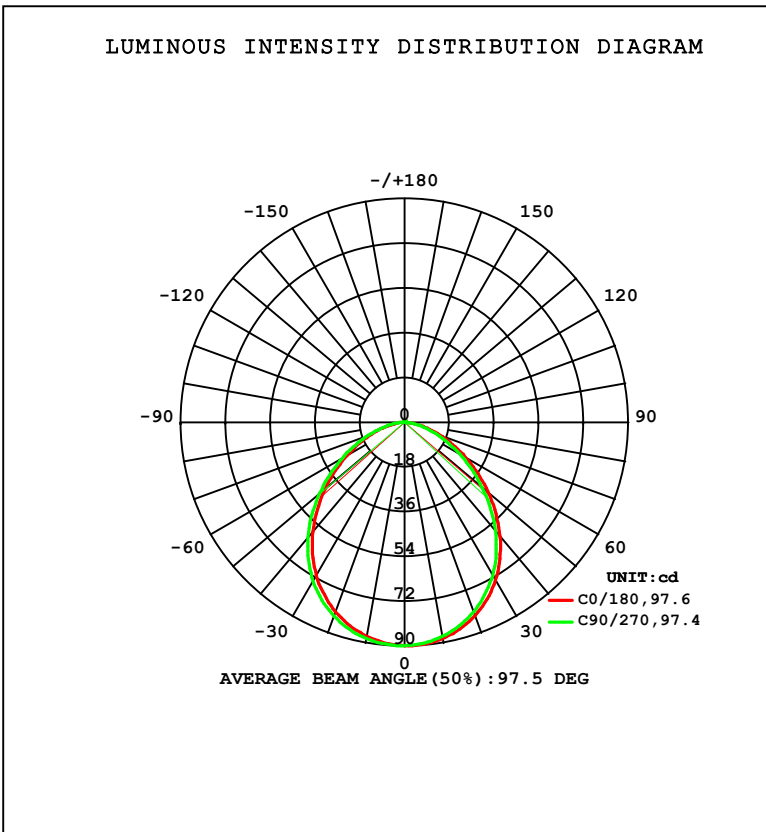


LUMINAIRE PHOTOMETRIC TEST REPORT

NAME: VIC-R-40K	TYPE: LED Fixture	WEIGHT:
SPEC.: 3.2W	DIM.: 63.5*12.7(MM)	SERIAL No.: 001
MFR.: Flexfire LEDs, Inc.	SUR.:	Shielding Angle: 120

DATA OF LAMP		PHOTOMETRIC DATA			
MODEL		Imax (cd)	89.86	S/MH (C0/180)	1.18
NOMINAL POWER (W)	3.05175	LOR (%)	100.0	S/MH (C90/270)	1.22
RATED VOLTAGE (V)	12.207	TOTAL FLUX (lm)	214.47	η UP, DN (C0-180)	0.6, 48.5
NOMINAL FLUX (lm)	214.471	CIE CLASS	DIRECT	η UP, DN (C180-360)	0.5, 50.4
LAMPS INSIDE	1	η up (%)	1.1	CIBSE SHR NOM	1.25
TEST VOLTAGE (V)	12.207	η down (%)	98.9	CIBSE SHR MAX	1.35



C Range: 0 - 360DEG
 C Interval: 22.5DEG
 Test Speed: HIGH
 Temperature: 25.3DEG
 Test Date: 2022-08-04

γ Range: 0 - 180DEG
 γ Interval: 1.0DEG
 Test System: EVERFINE GO-2000B_V1 SYSTEM V2.00.454
 Humidity: 65.0%
 Test Distance: 6.392m [K=1.0000]
 Remarks:

ZONAL FLUX DIAGRAM

ZONAL FLUX DIAGRAM:

γ	C0	C45	C90	C135	C180	C225	C270	C315	γ	Φ zone	Φ total	%lum,lamp
10	88.33	87.82	87.46	87.27	87.47	87.89	88.33	88.54	0- 10	8.481	8.481	3.95,3.95
20	82.84	81.82	81.20	80.88	81.27	82.24	83.04	83.41	10- 20	24.09	32.57	15.2,15.2
30	73.30	71.86	70.99	70.53	71.10	72.58	73.78	74.15	20- 30	35.73	68.31	31.8,31.8
40	59.81	58.04	56.99	56.52	57.38	59.25	60.61	60.92	30- 40	41.13	109.4	51,51
50	44.07	42.09	40.86	40.68	41.79	43.84	44.75	45.05	40- 50	39.23	148.7	69.3,69.3
60	28.46	26.94	25.63	25.64	26.82	28.59	29.03	29.18	50- 60	31.32	180.0	83.9,83.9
70	15.20	13.94	13.14	13.27	14.35	15.58	15.74	15.75	60- 70	20.60	200.6	93.5,93.5
80	4.917	4.091	3.855	3.971	4.665	5.367	5.408	3.899	70- 80	9.927	210.5	98.2,98.2
90	0.0839	0.0897	0.0926	0.0904	0.0519	0.0499	0.0526	0.0503	80- 90	1.541	212.1	98.9,98.9
100	0.1504	0.1619	0.1702	0.1656	0.1308	0.1222	0.1203	0.1156	90-100	0.1086	212.2	98.9,98.9
110	0.2613	0.2690	0.2878	0.2761	0.2468	0.2243	0.2254	0.2135	100-110	0.2017	212.4	99,99
120	0.3970	0.3910	0.4154	0.4065	0.3801	0.3415	0.3407	0.3290	110-120	0.3040	212.7	99.2,99.2
130	0.5475	0.5181	0.5182	0.5372	0.5355	0.4685	0.4532	0.4471	120-130	0.3896	213.1	99.3,99.3
140	0.6438	0.6328	0.6333	0.6552	0.6513	0.6056	0.5610	0.5877	130-140	0.4273	213.5	99.5,99.5
150	0.7301	0.6827	0.7286	0.6980	0.6908	0.6478	0.6911	0.6277	140-150	0.4084	213.9	99.7,99.7
160	0.7253	0.6528	0.6686	0.6729	0.7006	0.6652	0.6484	0.6429	150-160	0.3126	214.2	99.9,99.9
170	0.6833	0.6602	0.6335	0.6704	0.6907	0.6802	0.6560	0.6855	160-170	0.1879	214.4	100,100
180	0.7376	0.7250	0.7336	0.7357	0.7277	0.7176	0.7336	0.7382	170-180	0.0657	214.5	100,100
DEG	LUMINOUS INTENSITY:cd									UNIT:lm		

Conical surface Flux(90deg): 129.73 lm

%lum = 60.5%

%lamp = 60.5%

Conical surface Flux(120deg): 179.99 lm

%lum = 83.9%

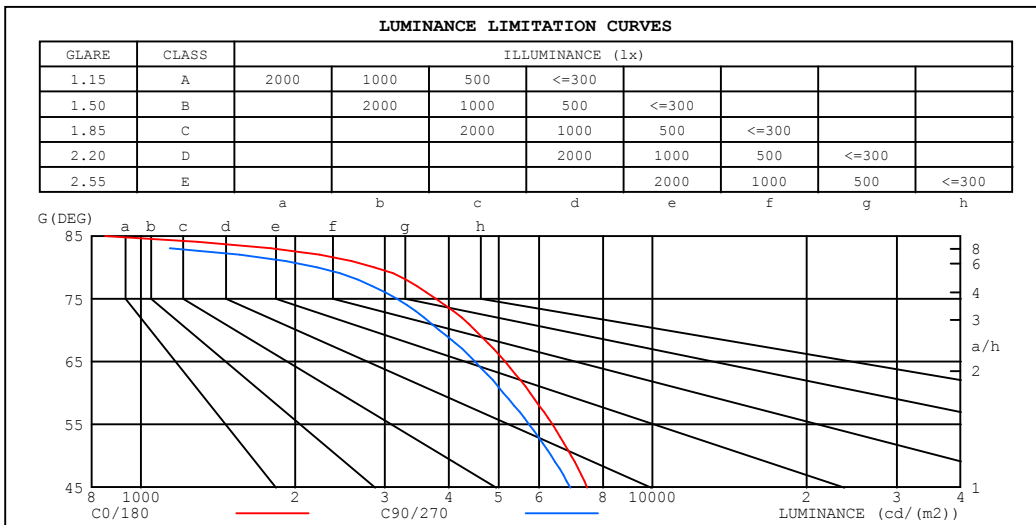
%lamp = 83.9%

C Range: 0 - 360DEG
 C Interval: 22.5DEG
 Test Speed: HIGH
 Temperature:25.3DEG
 Test Date:2022-08-04

γ Range: 0 - 180DEG
 γ Interval: 1.0DEG
 Test System:EVERFINE GO-2000B_V1 SYSTEM V2.00.454
 Humidity:65.0%
 Test Distance:6.392m [K=1.0000]
 Remarks:

LUMINANCE LIMITATION CURVES

NAME: VIC-R-40K	TYPE: LED Fixture	WEIGHT:
SPEC.: 3.2W	DIM.: 63.5*12.7(MM)	SERIAL No.: 001
MFR.: Flexfire LEDs, Inc.	SUR.:	Shielding Angle: 120



LUMINANCE cd/(m2)		
G (DEG)	C0/180	C90/270
85	851	588
80	2866	2214
75	3770	3165
70	4497	3830
65	5152	4493
60	5761	5113
55	6371	5735
50	6940	6340
45	7455	6910

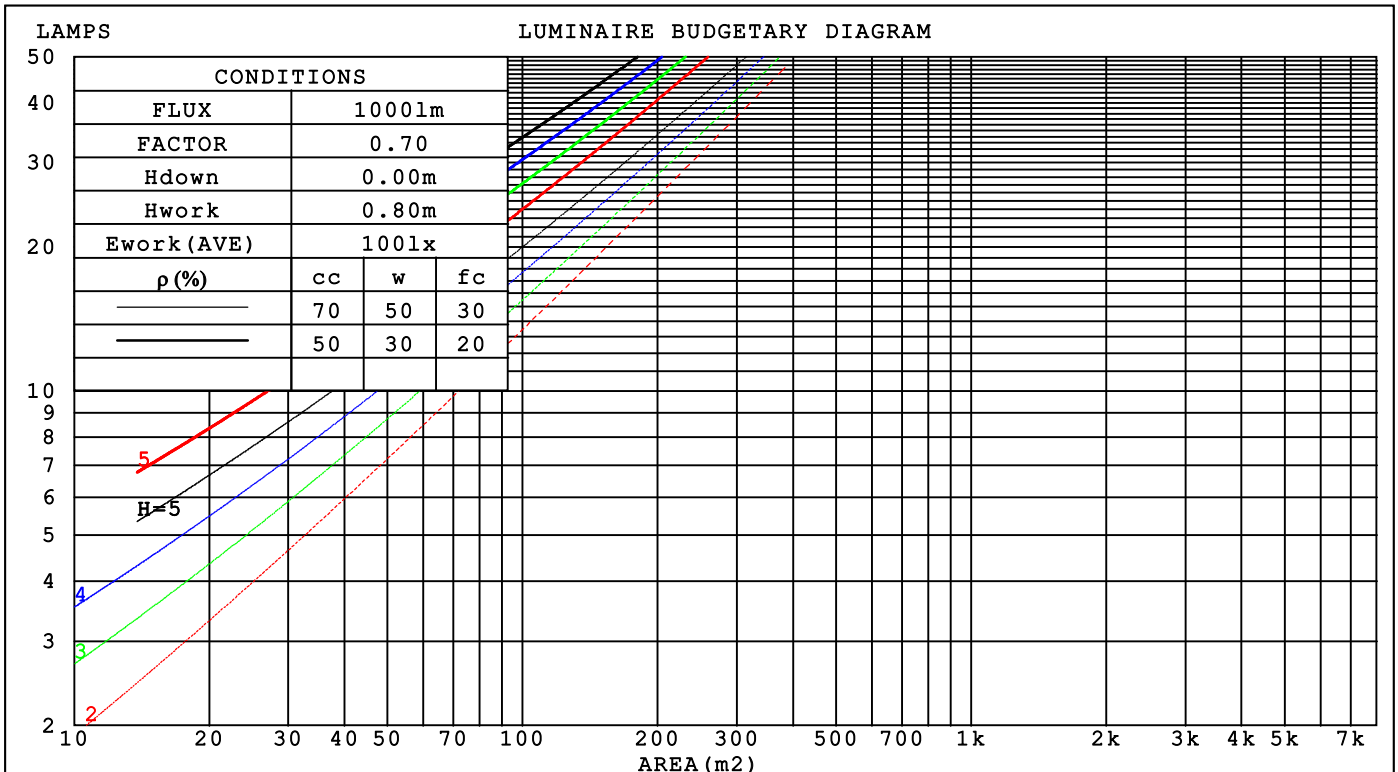
C Range: 0 - 360DEG
 C Interval: 22.5DEG
 Test Speed: HIGH
 Temperature: 25.3DEG
 Test Date: 2022-08-04

γ Range: 0 - 180DEG
 γ Interval: 1.0DEG
 Test System: EVERFINE GO-2000B_V1 SYSTEM V2.00.454
 Humidity: 65.0%
 Test Distance: 6.392m [K=1.0000]
 Remarks:

CU AND LUMINAIRE BUDGETARY ESTIMATE DIAGRAM

NAME: VIC-R-40K	TYPE: LED Fixture	WEIGHT:
SPEC.: 3.2W	DIM.: 63.5*12.7(MM)	SERIAL No.: 001
MFR.: Flexfire LEDs, Inc.	SUR.:	Shielding Angle: 120

pcc	80%			70%			50%			30%			10%			0
pw	50%	30%	10%	50%	30%	10%	50%	30%	10%	50%	30%	10%	50%	30%	10%	0
pfc	20%			20%			20%			20%			20%			0
RCR	RCR:Room Cavity Ratio															
	Coefficients of Utilization(CU)															
0.0	1.19	1.19	1.19	1.16	1.16	1.16	1.10	1.10	1.10	1.06	1.06	1.06	1.01	1.01	1.01	.99
1.0	1.05	1.02	.98	1.03	.90	.96	.99	.96	.93	.95	.92	.90	.91	.89	.87	.85
2.0	.93	.87	.81	.91	.85	.80	.87	.83	.78	.84	.80	.76	.81	.78	.75	.73
3.0	.82	.75	.69	.81	.74	.68	.78	.72	.67	.75	.70	.66	.72	.68	.64	.62
4.0	.74	.65	.59	.72	.65	.59	.70	.63	.58	.67	.61	.57	.65	.60	.56	.54
5.0	.66	.58	.51	.65	.57	.51	.63	.56	.50	.61	.55	.50	.59	.53	.49	.47
6.0	.60	.51	.45	.59	.51	.45	.57	.50	.45	.55	.49	.44	.54	.48	.44	.42
7.0	.54	.46	.40	.54	.46	.40	.52	.45	.40	.50	.44	.39	.49	.43	.39	.37
8.0	.50	.42	.36	.49	.41	.36	.48	.41	.36	.46	.40	.35	.45	.39	.35	.33
9.0	.46	.38	.33	.45	.38	.33	.44	.37	.32	.43	.37	.32	.42	.36	.32	.30
10.0	.42	.35	.30	.42	.35	.30	.41	.34	.29	.40	.34	.29	.39	.33	.29	.27



C Range: 0 - 360DEG
 C Interval: 22.5DEG
 Test Speed: HIGH
 Temperature: 25.3DEG
 Test Date: 2022-08-04

γ Range: 0 - 180DEG
 γ Interval: 1.0DEG
 Test System: EVERFINE GO-2000B_V1 SYSTEM V2.00.454
 Humidity: 65.0%
 Test Distance: 6.392m [K=1.0000]
 Remarks:

WEC AND CCEC

NAME: VIC-R-40K	TYPE: LED Fixture	WEIGHT:
SPEC.: 3.2W	DIM.: 63.5*12.7(MM)	SERIAL No.: 001
MFR.: Flexfire LEDs, Inc.	SUR.:	Shielding Angle: 120

ρ_{cc}	80%			70%			50%			30%			10%			0
ρ_w	50%	30%	10%	50%	30%	10%	50%	30%	10%	50%	30%	10%	50%	30%	10%	0
ρ_{fc}	20%			20%			20%			20%			20%			0
RCR	RCR:Room Cavity Ratio						Wall Exitance Coefficients(WEC)									
0.0																
1.0	.275	.157	.050	.268	.153	.049	.254	.146	.047	.242	.139	.045	.230	.133	.043	
2.0	.265	.145	.045	.258	.142	.044	.246	.137	.043	.235	.132	.041	.225	.127	.040	
3.0	.249	.132	.040	.243	.130	.039	.232	.126	.038	.222	.122	.037	.213	.118	.037	
4.0	.232	.121	.035	.227	.119	.035	.217	.115	.034	.209	.112	.034	.201	.109	.033	
5.0	.216	.110	.032	.212	.109	.032	.203	.106	.031	.196	.103	.031	.188	.101	.030	
6.0	.202	.101	.029	.198	.100	.029	.190	.098	.028	.183	.095	.028	.177	.093	.028	
7.0	.189	.093	.026	.185	.092	.026	.179	.090	.026	.172	.088	.026	.167	.087	.025	
8.0	.177	.087	.024	.174	.086	.024	.168	.084	.024	.162	.082	.024	.157	.081	.023	
9.0	.167	.081	.023	.164	.080	.022	.159	.078	.022	.153	.077	.022	.149	.075	.022	
10.0	.157	.076	.021	.155	.075	.021	.150	.073	.021	.145	.072	.021	.141	.071	.020	

ρ_{cc}	80%			70%			50%			30%			10%			0
ρ_w	50%	30%	10%	50%	30%	10%	50%	30%	10%	50%	30%	10%	50%	30%	10%	0
ρ_{fc}	20%			20%			20%			20%			20%			0
RCR	RCR:Room Cavity Ratio						Ceiling Cavity Exitance Coefficients(CCEC)									
0.0	.199	.199	.199	.170	.170	.170	.116	.116	.116	.067	.067	.067	.021	.021	.021	
1.0	.187	.165	.146	.160	.142	.125	.109	.097	.087	.063	.056	.050	.020	.018	.016	
2.0	.177	.141	.110	.152	.121	.095	.104	.084	.066	.060	.049	.039	.019	.016	.013	
3.0	.169	.123	.086	.145	.106	.075	.100	.074	.052	.057	.043	.031	.018	.014	.010	
4.0	.161	.109	.070	.138	.094	.061	.095	.066	.043	.055	.039	.025	.018	.013	.008	
5.0	.154	.099	.058	.132	.085	.051	.091	.060	.036	.053	.035	.021	.017	.011	.007	
6.0	.147	.090	.050	.126	.078	.043	.087	.055	.031	.051	.032	.018	.016	.011	.006	
7.0	.141	.083	.043	.121	.072	.038	.084	.051	.027	.049	.030	.016	.016	.010	.005	
8.0	.134	.078	.039	.116	.067	.034	.080	.047	.024	.047	.028	.014	.015	.009	.005	
9.0	.129	.073	.035	.111	.063	.030	.077	.044	.022	.045	.026	.013	.014	.009	.004	
10.0	.123	.068	.032	.106	.059	.028	.074	.042	.020	.043	.025	.012	.014	.008	.004	

C Range: 0 - 360DEG
 C Interval: 22.5DEG
 Test Speed: HIGH
 Temperature:25.3DEG
 Test Date:2022-08-04

γ Range: 0 - 180DEG
 γ Interval: 1.0DEG
 Test System:EVERFINE GO-2000B_V1 SYSTEM V2.00.454
 Humidity:65.0%
 Test Distance:6.392m [K=1.0000]
 Remarks:

UGR(Unified Glare Rating) Table

NAME: VIC-R-40K		TYPE: LED Fixture					WEIGHT:					
SPEC.: 3.2W		DIM.: 63.5*12.7(MM)					SERIAL No.: 001					
MFR.: Flexfire LEDs, Inc.		SUR.:					Shielding Angle: 120					
ceiling/cavity		0.7	0.7	0.5	0.5	0.3	0.7	0.7	0.5	0.5	0.3	
walls		0.5	0.3	0.5	0.3	0.3	0.5	0.3	0.5	0.3	0.3	
working plane		0.2	0.2	0.2	0.2	0.2	0.2	0.2	0.2	0.2	0.2	
Room dimensions		Viewed crosswise					Viewed endwise					
x = 2H y = 2H		19.0	20.4	19.2	20.6	20.8	18.5	19.9	18.8	20.2	20.4	
	3H	20.0	21.3	20.3	21.6	21.8	19.5	20.8	19.8	21.0	21.3	
	4H	20.4	21.6	20.7	21.9	22.2	19.8	21.0	20.1	21.3	21.6	
	6H	20.6	21.8	20.9	22.0	22.3	19.9	21.1	20.3	21.4	21.7	
	8H	20.6	21.7	21.0	22.0	22.3	19.9	21.0	20.3	21.3	21.6	
	12H	20.6	21.6	20.9	22.0	22.3	19.9	20.9	20.2	21.3	21.6	
	4H	2H	19.3	20.6	19.7	20.8	21.1	19.0	20.2	19.3	20.5	20.8
		3H	20.6	21.7	20.9	22.0	22.3	20.1	21.2	20.5	21.5	21.8
		4H	21.1	22.0	21.4	22.4	22.7	20.5	21.5	20.9	21.8	22.2
		6H	21.3	22.2	21.8	22.6	23.0	20.7	21.6	21.1	22.0	22.4
		8H	21.4	22.2	21.8	22.6	23.0	20.7	21.5	21.2	21.9	22.3
		12H	21.4	22.1	21.8	22.5	22.9	20.7	21.4	21.2	21.8	22.3
	8H	4H	21.2	22.0	21.6	22.3	22.7	20.7	21.5	21.1	21.8	22.2
		6H	21.5	22.2	22.0	22.6	23.1	21.0	21.6	21.4	22.0	22.5
		8H	21.6	22.2	22.1	22.6	23.1	21.0	21.6	21.5	22.0	22.5
		12H	21.6	22.1	22.1	22.6	23.1	21.0	21.5	21.5	21.9	22.4
	12H	4H	21.1	21.9	21.6	22.3	22.7	20.6	21.4	21.1	21.8	22.2
		6H	21.5	22.1	22.0	22.5	23.0	21.0	21.5	21.4	22.0	22.5
		8H	21.6	22.1	22.1	22.6	23.1	21.0	21.5	21.5	22.0	22.5
Variations with the observer position at spacings(CIE Pub.117):												
S = 1.0H		+ 0.3 / - 0.3					+ 0.3 / - 0.4					
	1.5H	+ 0.1 / - 0.3					+ 0.1 / - 0.3					
	2.0H	+ 0.5 / - 0.4					+ 0.5 / - 0.6					

CIE Pub.117, 214.5 lm Total Lamp Luminous Flux Corrected (8log(F/F0) = -5.3)
 Area: 0.01 m2

C Range: 0 - 360DEG
 C Interval: 22.5DEG
 Test Speed: HIGH
 Temperature:25.3DEG
 Test Date:2022-08-04

γ Range: 0 - 180DEG
 γ Interval: 1.0DEG
 Test System:EVERFINE GO-2000B_V1 SYSTEM V2.00.454
 Humidity:65.0%
 Test Distance:6.392m [K=1.0000]
 Remarks:

UTILIZATION FACTORS TABLE

NAME: VIC-R-40K	TYPE: LED Fixture	WEIGHT:
SPEC.: 3.2W	DIM.: 63.5*12.7(MM)	SERIAL No.: 001
MFR.: Flexfire LEDs, Inc.	SUR.:	Shielding Angle: 120

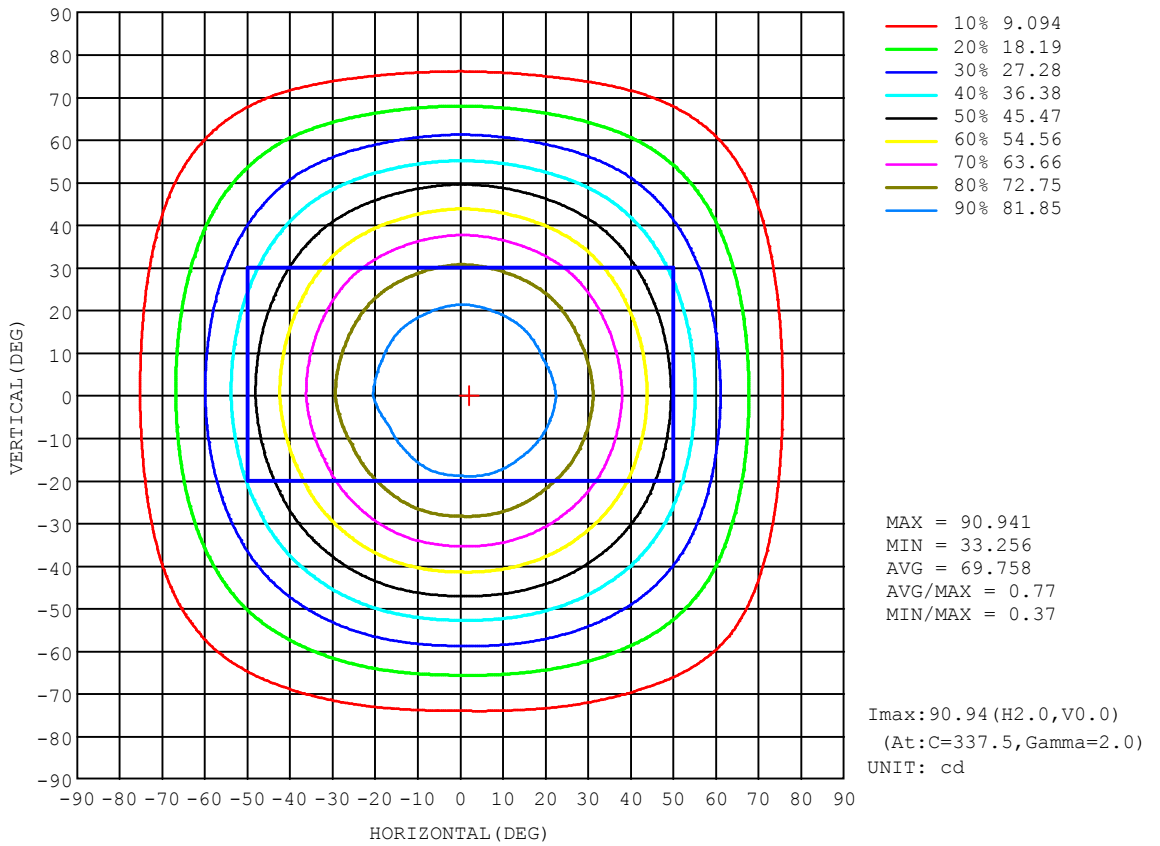
REFLECTANCE										
Ceiling	0.8	0.8	0.8	0.7	0.7	0.7	0.5	0.5	0.5	0
Walls	0.7	0.5	0.3	0.7	0.5	0.3	0.7	0.5	0.3	0
Working plane	0.2	0.2	0.2	0.2	0.2	0.2	0.2	0.2	0.2	0
ROOM INDEX	UTILIZATION FACTORS (PERCENT) k(RI) x RCR = 5									
k = 0.60	60	48	42	59	48	42	58	48	41	35
0.80	69	58	51	68	58	51	66	57	50	44
1.00	77	66	59	76	66	59	73	67	58	51
1.25	84	74	67	83	73	66	80	72	66	58
1.50	89	80	73	87	79	72	84	77	71	64
2.00	96	88	82	94	87	81	91	85	80	72
2.50	100	93	87	98	92	86	94	89	84	76
3.00	103	97	91	101	95	90	97	92	88	79
4.00	107	101	97	104	100	96	100	96	93	84
5.00	109	105	101	107	103	99	102	99	96	87
ROOM INDEX	UF (total)									Direct
According to DIN EN 13032-2 2004			Suspended					SHRNOM = 1.00		

C Range: 0 - 360DEG
 C Interval: 22.5DEG
 Test Speed: HIGH
 Temperature: 25.3DEG
 Test Date: 2022-08-04

γ Range: 0 - 180DEG
 γ Interval: 1.0DEG
 Test System: EVERFINE GO-2000B_V1 SYSTEM V2.00.454
 Humidity: 65.0%
 Test Distance: 6.392m [K=1.0000]
 Remarks:

ISOCANDELA DIAGRAM

NAME: VIC-R-40K	TYPE: LED Fixture	WEIGHT:
SPEC.: 3.2W	DIM.: 63.5*12.7(MM)	SERIAL No.: 001
MFR.: Flexfire LEDs, Inc.	SUR.:	Shielding Angle: 120

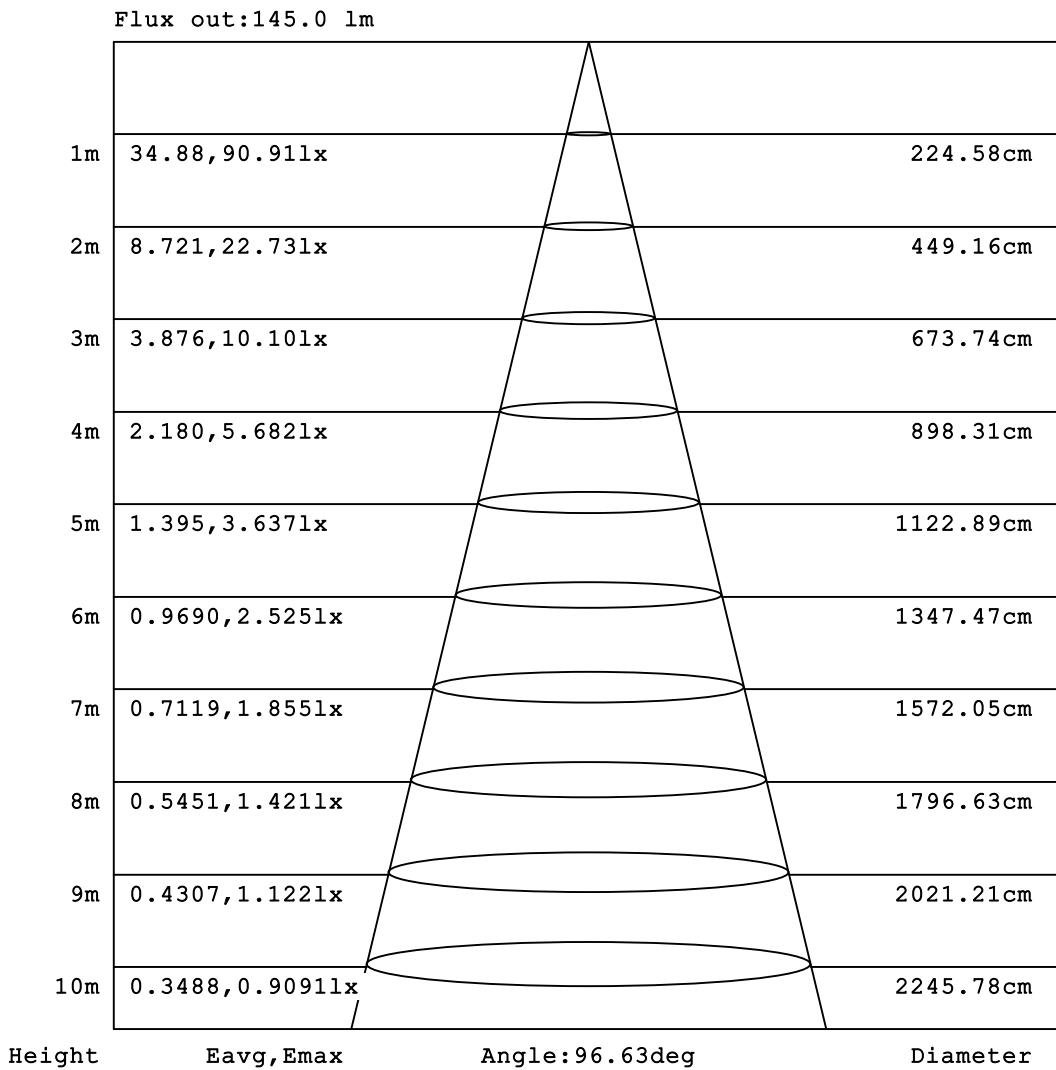


C Range: 0 - 360DEG
 C Interval: 22.5DEG
 Test Speed: HIGH
 Temperature: 25.3DEG
 Test Date: 2022-08-04

γ Range: 0 - 180DEG
 γ Interval: 1.0DEG
 Test System: EVERFINE GO-2000B_V1 SYSTEM V2.00.454
 Humidity: 65.0%
 Test Distance: 6.392m [K=1.0000]
 Remarks:

AAI Figure

NAME: VIC-R-40K	TYPE: LED Fixture	WEIGHT:
SPEC.: 3.2W	DIM.: 63.5*12.7(MM)	SERIAL No.: 001
MFR.: Flexfire LEDs, Inc.	SUR.:	Shielding Angle: 120



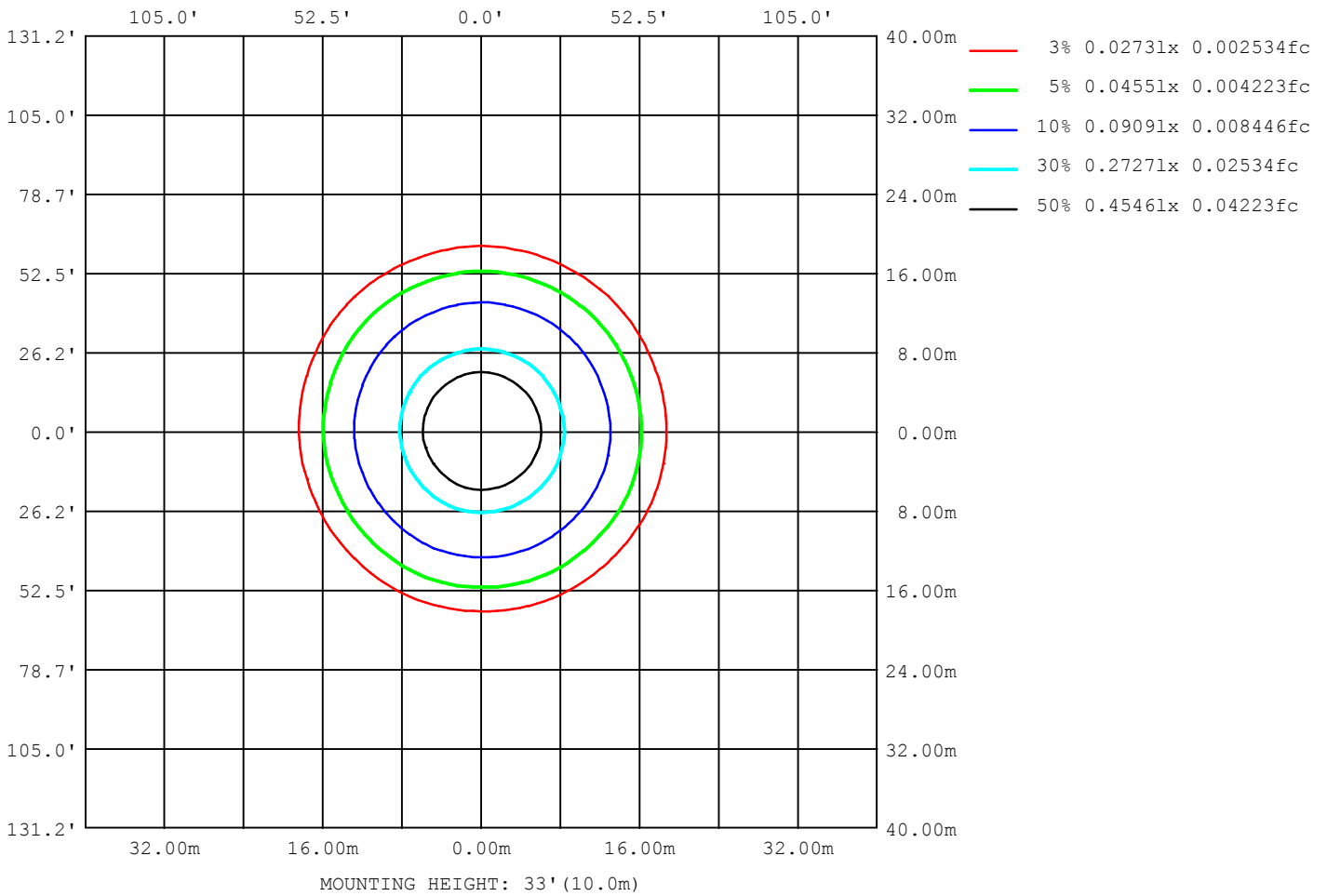
Note: The Curves indicate the illuminated area and the average illumination when the luminaire is at different distance.

C Range: 0 - 360DEG
 C Interval: 22.5DEG
 Test Speed: HIGH
 Temperature: 25.3DEG
 Test Date: 2022-08-04

γ Range: 0 - 180DEG
 γ Interval: 1.0DEG
 Test System: EVERFINE GO-2000B_V1 SYSTEM V2.00.454
 Humidity: 65.0%
 Test Distance: 6.392m [K=1.0000]
 Remarks:

ISOLUX DIAGRAM

NAME: VIC-R-40K	TYPE: LED Fixture	WEIGHT:
SPEC.: 3.2W	DIM.: 63.5*12.7(MM)	SERIAL No.: 001
MFR.: Flexfire LEDs, Inc.	SUR.:	Shielding Angle: 120



C Range: 0 - 360DEG
 C Interval: 22.5DEG
 Test Speed: HIGH
 Temperature: 25.3DEG
 Test Date: 2022-08-04

γ Range: 0 - 180DEG
 γ Interval: 1.0DEG
 Test System: EVERFINE GO-2000B_V1 SYSTEM V2.00.454
 Humidity: 65.0%
 Test Distance: 6.392m [K=1.0000]
 Remarks:

LED Avg.L Report

NAME: VIC-R-40K	TYPE: LED Fixture	WEIGHT:
SPEC.: 3.2W	DIM.: 63.5*12.7(MM)	SERIAL No.: 001
MFR.: Flexfire LEDs, Inc.	SUR.:	Shielding Angle: 120

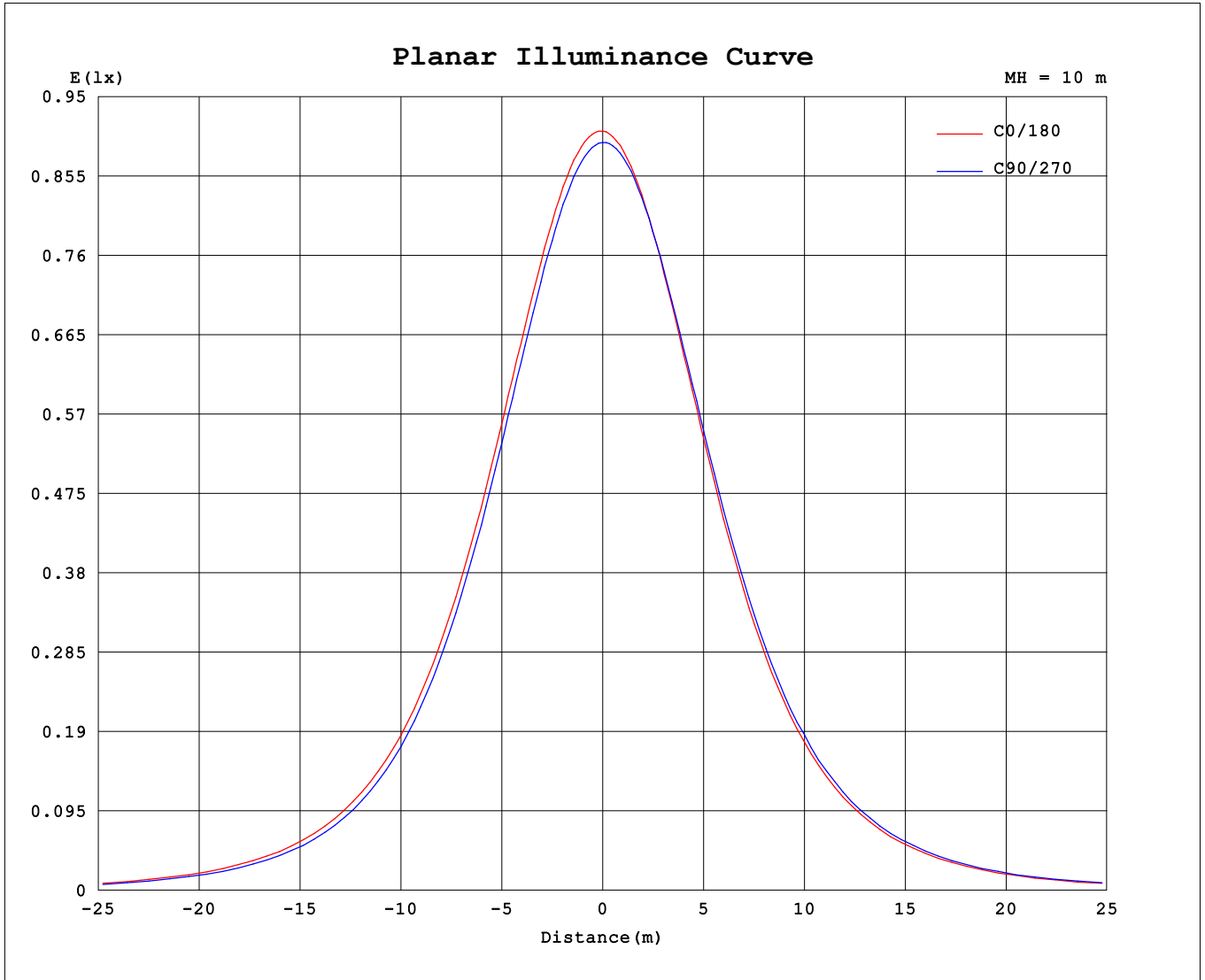
AvgL	cd/m2
L 0~180 (65) av	4946
L 0~180 (75) av	3634
L 0~180 (85) av	839
L 90~270 (65) av	4857
L 90~270 (75) av	3553
L 90~270 (85) av	972
L 45 (65) av	4913
L 45 (75) av	3589
L 45 (85) av	904

Standard: GB/T 29293-2012

C Range: 0 - 360DEG
 C Interval: 22.5DEG
 Test Speed: HIGH
 Temperature: 25.3DEG
 Test Date: 2022-08-04

γ Range: 0 - 180DEG
 γ Interval: 1.0DEG
 Test System: EVERFINE GO-2000B_V1 SYSTEM V2.00.454
 Humidity: 65.0%
 Test Distance: 6.392m [K=1.0000]
 Remarks:

Planar Illuminance Curve



C Range: 0 - 360DEG
 C Interval: 22.5DEG
 Test Speed: HIGH
 Temperature: 25.3DEG
 Test Date: 2022-08-04

γ Range: 0 - 180DEG
 γ Interval: 1.0DEG
 Test System: EVERFINE GO-2000B_V1 SYSTEM V2.00.454
 Humidity: 65.0%
 Test Distance: 6.392m [K=1.0000]
 Remarks:

LUMINOUS DISTRIBUTION INTENSITY DATA

NAME: VIC-R-40K	TYPE: LED Fixture	WEIGHT:
SPEC.: 3.2W	DIM.: 63.5*12.7(MM)	SERIAL No.: 001
MFR.: Flexfire LEDs, Inc.	SUR.:	Shielding Angle: 120

Table--1

UNIT: cd

C (DEG) \ γ (DEG)	0	22.5	45	67.5	90	112.5	135	157.5	180	202.5	225	247.5	270	292.5	315	337.5			
0	89.8	89.8	89.8	89.8	89.8	89.8	89.8	89.8	89.8	89.8	89.8	89.8	89.8	89.8	89.8	89.8			
5	89.6	89.5	89.3	89.3	89.1	89.1	89.0	89.0	89.1	89.1	89.3	89.4	89.5	89.6	89.6	89.6			
10	88.3	88.2	87.8	87.7	87.5	87.5	87.3	87.3	87.5	87.5	87.9	88.1	88.3	88.4	88.5	88.5			
15	86.1	85.9	85.3	85.2	84.9	84.9	84.6	84.6	84.8	84.9	85.5	85.8	86.1	86.2	86.5	86.4			
20	82.8	82.5	81.8	81.7	81.2	81.3	80.9	80.9	81.3	81.4	82.2	82.5	83.0	83.1	83.4	83.2			
25	78.6	78.2	77.4	77.1	76.5	76.7	76.2	76.2	76.6	76.9	77.8	78.2	79.0	78.9	79.3	79.0			
30	73.3	72.8	71.9	71.6	71.0	71.1	70.5	70.6	71.1	71.5	72.6	72.9	73.8	73.7	74.1	73.9			
35	66.9	66.5	65.4	65.0	64.4	64.5	63.9	64.1	64.6	65.2	66.4	66.7	67.6	67.5	67.9	67.8			
40	59.8	59.3	58.0	57.7	57.0	57.2	56.5	56.9	57.4	58.1	59.3	59.7	60.6	60.5	60.9	60.6			
45	52.1	51.5	50.1	49.7	49.0	49.2	48.7	49.1	49.7	50.4	51.6	52.0	52.9	52.7	53.1	52.9			
50	44.1	43.5	42.1	41.6	40.9	41.1	40.7	41.1	41.8	42.6	43.8	44.0	44.8	44.6	45.1	44.7			
55	36.1	35.6	34.3	33.7	33.0	33.2	32.9	33.3	34.1	34.8	36.0	36.1	36.6	36.5	36.9	36.6			
60	28.5	28.0	26.9	26.3	25.6	25.9	25.6	26.0	26.8	27.5	28.6	28.6	29.0	28.8	29.2	29.0			
65	21.5	21.2	20.0	19.7	19.0	19.3	19.1	19.5	20.3	20.8	21.8	21.7	22.0	21.8	22.2	21.9			
70	15.2	15.0	13.9	13.8	13.1	13.4	13.3	13.6	14.4	14.8	15.6	15.4	15.7	15.5	15.8	15.5			
75	9.64	9.57	8.69	8.65	8.21	8.40	8.20	8.58	9.17	9.49	10.1	10.01	10.2	9.94	10.2	9.97			
80	4.92	4.71	4.09	4.05	3.85	4.04	3.97	4.22	4.67	4.89	5.37	5.27	5.41	5.11	3.90	5.15			
85	0.73	0.66	0.52	0.55	0.51	0.58	0.57	0.63	0.73	0.82	1.11	1.10	1.18	0.94	0.96	0.87			
90	0.08	0.09	0.09	0.10	0.09	0.09	0.09	0.09	0.05	0.04	0.05	0.05	0.05	0.05	0.05	0.04			
95	0.11	0.12	0.12	0.13	0.12	0.13	0.13	0.13	0.09	0.07	0.08	0.06	0.08	0.06	0.08	0.06			
100	0.15	0.17	0.16	0.18	0.17	0.17	0.17	0.17	0.13	0.11	0.12	0.10	0.12	0.11	0.12	0.10			
105	0.20	0.22	0.22	0.23	0.23	0.23	0.22	0.22	0.19	0.16	0.17	0.15	0.17	0.15	0.16	0.15			
110	0.26	0.27	0.27	0.29	0.29	0.28	0.28	0.28	0.25	0.21	0.22	0.21	0.23	0.20	0.21	0.20			
115	0.33	0.33	0.33	0.35	0.35	0.34	0.34	0.34	0.31	0.27	0.28	0.26	0.28	0.26	0.27	0.25			
120	0.40	0.40	0.39	0.41	0.42	0.41	0.41	0.42	0.38	0.33	0.34	0.32	0.34	0.32	0.33	0.32			
125	0.47	0.47	0.46	0.47	0.47	0.47	0.47	0.50	0.46	0.41	0.40	0.38	0.40	0.37	0.39	0.39			
130	0.55	0.54	0.52	0.51	0.52	0.51	0.54	0.57	0.54	0.47	0.47	0.43	0.45	0.42	0.45	0.45			
135	0.61	0.60	0.58	0.57	0.57	0.58	0.60	0.63	0.60	0.51	0.53	0.49	0.50	0.48	0.51	0.51			
140	0.64	0.64	0.63	0.63	0.63	0.57	0.66	0.66	0.65	0.55	0.61	0.56	0.56	0.55	0.59	0.55			
145	0.69	0.68	0.67	0.68	0.69	0.69	0.69	0.70	0.66	0.60	0.65	0.62	0.64	0.61	0.64	0.59			
150	0.73	0.70	0.68	0.68	0.73	0.70	0.70	0.72	0.69	0.65	0.65	0.64	0.69	0.63	0.63	0.63			
155	0.74	0.69	0.67	0.66	0.72	0.68	0.70	0.71	0.71	0.66	0.65	0.64	0.68	0.63	0.63	0.65			
160	0.73	0.69	0.65	0.65	0.67	0.65	0.67	0.69	0.70	0.67	0.67	0.64	0.65	0.63	0.64	0.65			
165	0.69	0.67	0.65	0.64	0.64	0.65	0.66	0.68	0.69	0.67	0.68	0.65	0.64	0.65	0.67	0.65			
170	0.68	0.69	0.66	0.66	0.63	0.67	0.67	0.67	0.69	0.67	0.68	0.66	0.66	0.67	0.69	0.67			
175	0.69	0.69	0.70	0.70	0.68	0.71	0.72	0.72	0.70	0.68	0.70	0.69	0.70	0.69	0.71	0.70			
180	0.74	0.71	0.73	0.73	0.73	0.73	0.74	0.73	0.73	0.71	0.72	0.72	0.73	0.72	0.74	0.74			

C Range: 0 - 360DEG
 C Interval: 22.5DEG
 Test Speed: HIGH
 Temperature: 25.3DEG
 Test Date: 2022-08-04

γ Range: 0 - 180DEG
 γ Interval: 1.0DEG
 Test System: EVERFINE GO-2000B_V1 SYSTEM V2.00.454
 Humidity: 65.0%
 Test Distance: 6.392m [K=1.0000]
 Remarks: