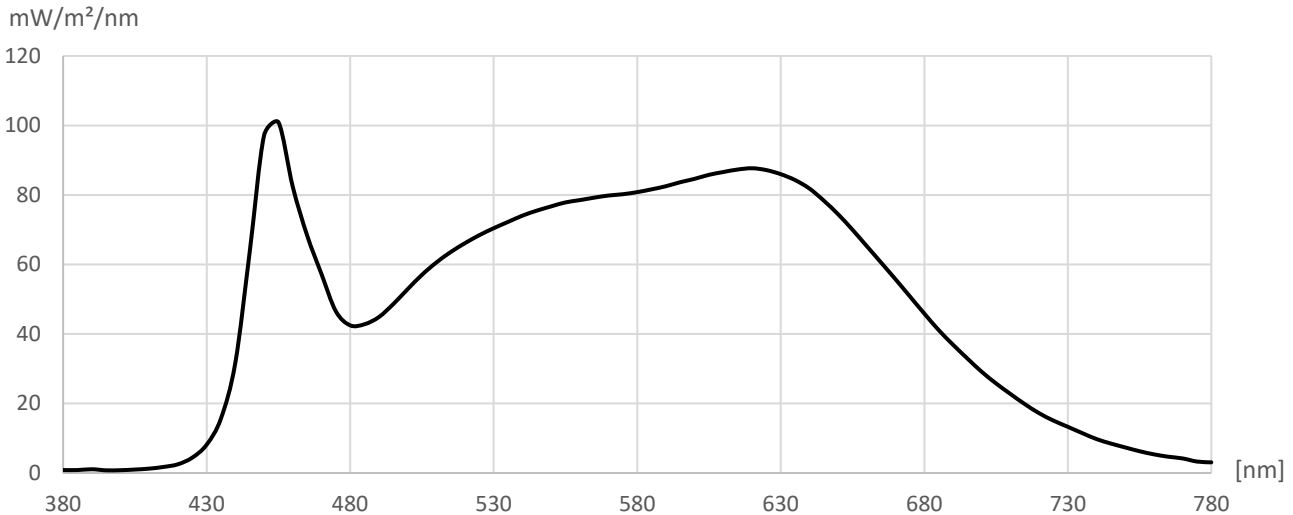


Measurement Protocol



Manufacturer: Flexfire LEDs, Inc.
 Type: UltraBright™ Industrial Series LED Strip Light
 Model: UB-IS-40K90C

Measurement file: UB-IS-40K90C.CSV
 Date of measurement: 08.05.2023
 Time of measurement: 12:05:08



R1 = 95.4	Ra = 94.5	Illuminance	5,485.70 lx	CIE1931
R2 = 97.9	Re = 91.9	Ee	19.091 W/m²	x = 0.3755
R3 = 97.3	GAI = 79.5	LER	287.3 lm/W	y = 0.3722
R4 = 93.2				
R5 = 93.6	TLCI = 95.0	Correlated Color Temperature (CCT)	4,103 K	CIE1976
R6 = 94.1		Duv	-0.0007	u' = 0.2237
R7 = 94.8	PPFD			v' = 0.4988
R8 = 89.7	[μmol/m²s]	Saturation	24.30 %	
R9 = 76.2	85.86			CIE1960
R10 = 92.8		Dominant wavelength	578 nm	u = 0.2237
R11 = 93.3		Peak wavelength	453 nm	v = 0.3325
R12 = 70.9				
R13 = 96.6		Flicker frequency	% < 1.0	TM30
R14 = 98.2		Percent Flicker	< 1.0	Rf = 89.0
R15 = 93.7		Flicker index	% < 1.0	Rg = 98.2

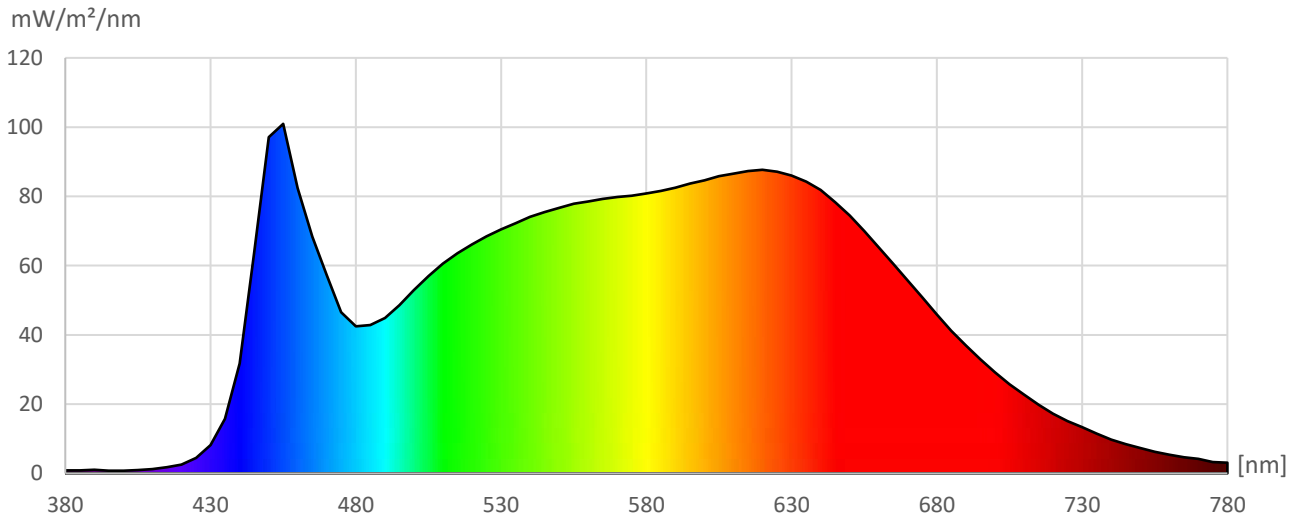
[nm]	mW/m²/nm	[nm]	mW/m²/nm	[nm]	mW/m²/nm	[nm]	mW/m²/nm	[nm]	mW/m²/nm	[nm]	mW/m²/nm	[nm]	mW/m²/nm
380	0.85	440	31.74	500	52.88	560	78.52	620	87.69	680	45.89	740	9.77
385	0.85	445	63.59	505	57.02	565	79.23	625	87.15	685	41.14	745	8.48
390	1.09	450	97.11	510	60.56	570	79.84	630	85.99	690	36.92	750	7.36
395	0.78	455	100.95	515	63.57	575	80.22	635	84.28	695	32.96	755	6.27
400	0.81	460	82.37	520	66.14	580	80.82	640	81.85	700	29.14	760	5.37
405	1.00	465	68.38	525	68.43	585	81.62	645	78.36	705	25.78	765	4.69
410	1.27	470	57.27	530	70.44	590	82.52	650	74.43	710	22.76	770	4.19
415	1.75	475	46.56	535	72.25	595	83.68	655	69.99	715	19.83	775	3.30
420	2.51	480	42.49	540	74.05	600	84.64	660	65.25	720	17.22	780	3.07
425	4.43	485	42.81	545	75.49	605	85.80	665	60.50	725	15.08		
430	8.15	490	44.87	550	76.71	610	86.61	670	55.71	730	13.30		
435	15.73	495	48.59	555	77.86	615	87.33	675	50.81	735	11.49		

Measurement Protocol



Manufacturer: Flexfire LEDs, Inc.
 Type: UltraBright™ Industrial Series LED Strip Light
 Model: UB-IS-40K90C

Measurement file: UB-IS-40K90C.CSV
 Date of measurement: 08.05.2023
 Time of measurement: 12:05:08



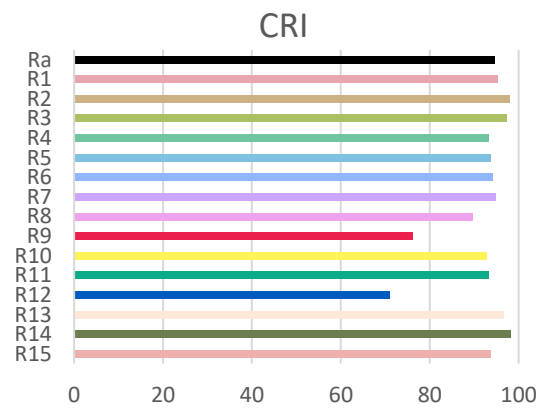
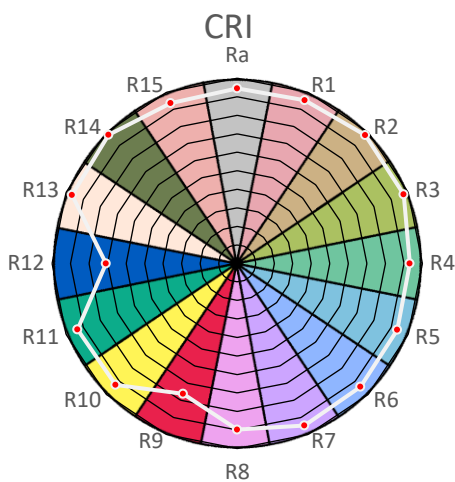
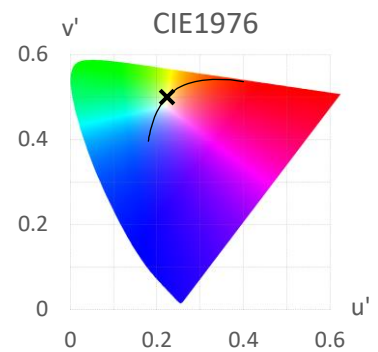
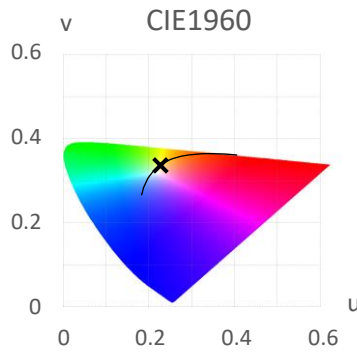
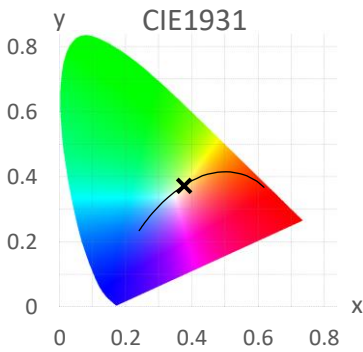
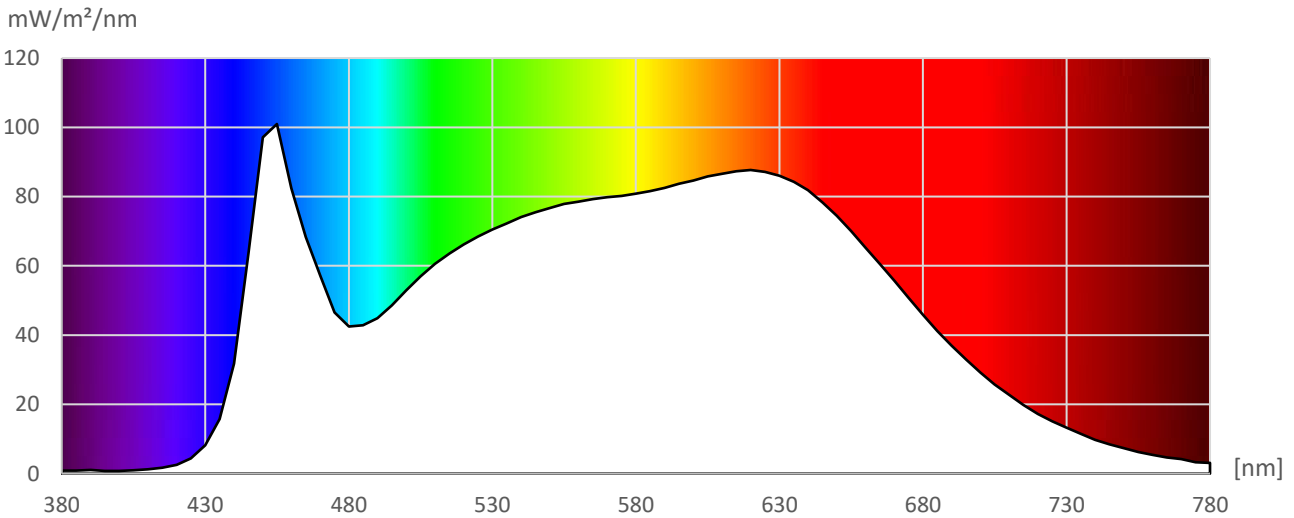
[nm]	mW/m²/nm	[nm]	mW/m²/nm	[nm]	mW/m²/nm	[nm]	mW/m²/nm	[nm]	mW/m²/nm	[nm]	mW/m²/nm	[nm]	mW/m²/nm
380	0.85	535	72.25	690	36.92								
385	0.85	540	74.05	695	32.96								
390	1.09	545	75.49	700	29.14								
395	0.78	550	76.71	705	25.78								
400	0.81	555	77.86	710	22.76								
405	1.00	560	78.52	715	19.83								
410	1.27	565	79.23	720	17.22								
415	1.75	570	79.84	725	15.08								
420	2.51	575	80.22	730	13.30								
425	4.43	580	80.82	735	11.49								
430	8.15	585	81.62	740	9.77								
435	15.73	590	82.52	745	8.48								
440	31.74	595	83.68	750	7.36								
445	63.59	600	84.64	755	6.27								
450	97.11	605	85.80	760	5.37								
455	100.95	610	86.61	765	4.69								
460	82.37	615	87.33	770	4.19								
465	68.38	620	87.69	775	3.30								
470	57.27	625	87.15	780	3.07								
475	46.56	630	85.99										
480	42.49	635	84.28										
485	42.81	640	81.85										
490	44.87	645	78.36										
495	48.59	650	74.43										
500	52.88	655	69.99										
505	57.02	660	65.25										
510	60.56	665	60.50										
515	63.57	670	55.71										
520	66.14	675	50.81										
525	68.43	680	45.89										
530	70.44	685	41.14										

Measurement Protocol



Manufacturer: Flexfire LEDs, Inc.
 Type: UltraBright™ Industrial Series LED Strip Light
 Model: UB-IS-40K90C

Measurement file: UB-IS-40K90C.CSV
 Date of measurement: 08.05.2023
 Time of measurement: 12:05:08

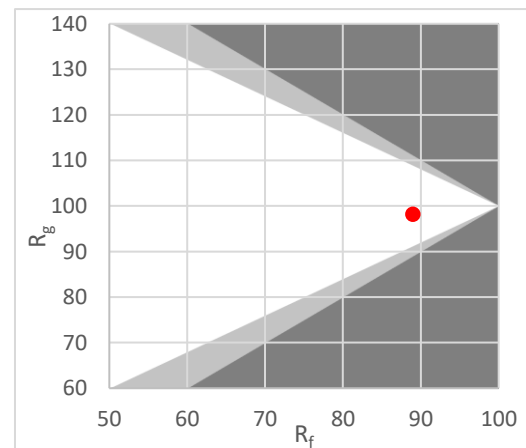
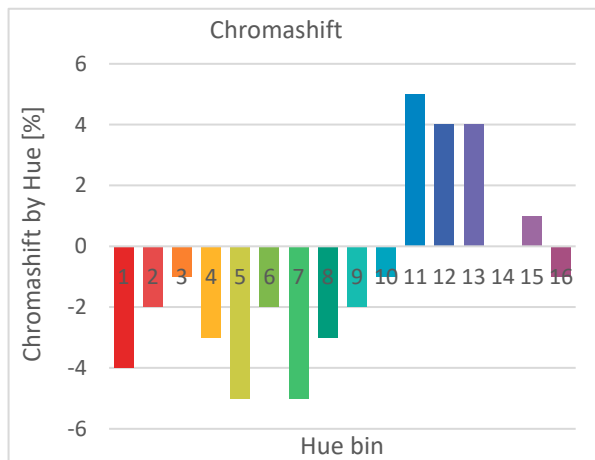
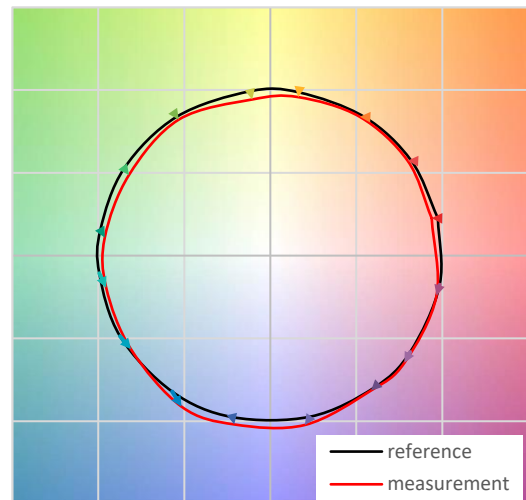
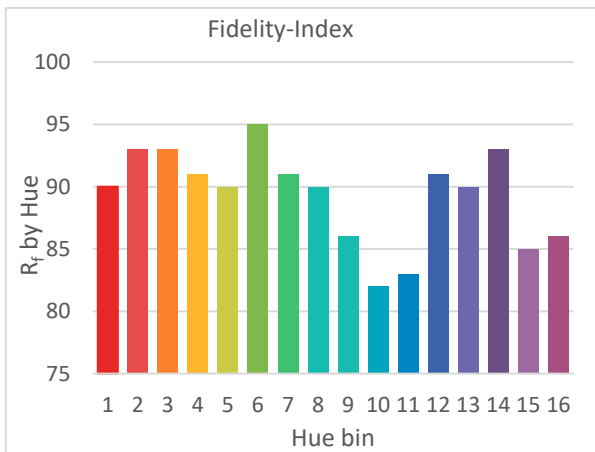
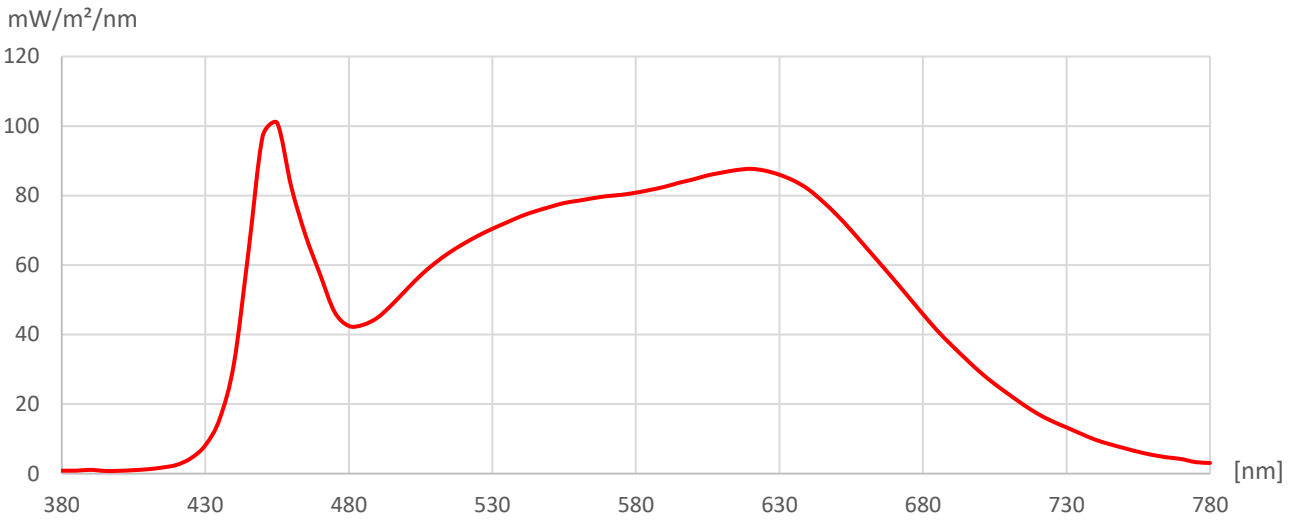


Measurement Protocol



Manufacturer: Flexfire LEDs, Inc.
 Type: UltraBright™ Industrial Series LED Strip Light
 Model: UB-IS-40K90C

Measurement file: UB-IS-40K90C.CSV
 Date of measurement: 08.05.2023
 Time of measurement: 12:05:08

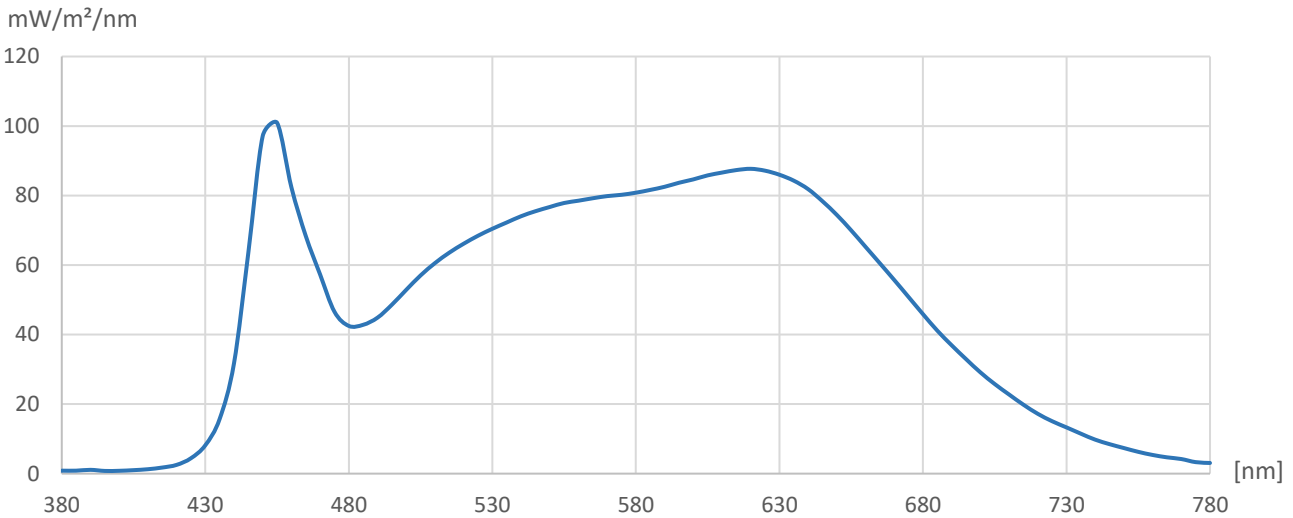


Measurement Protocol



Manufacturer: Flexfire LEDs, Inc.
 Type: UltraBright™ Industrial Series LED Strip Light
 Model: UB-IS-40K90C

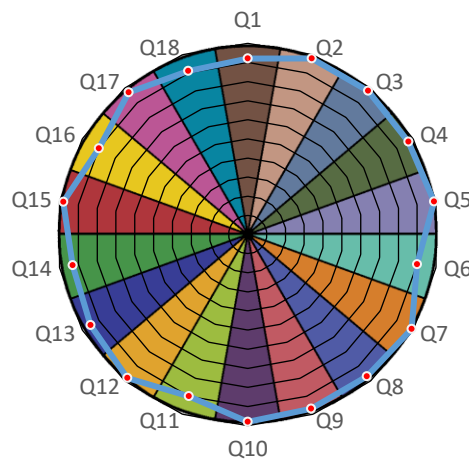
Measurement file: UB-IS-40K90C.CSV
 Date of measurement: 08.05.2023
 Time of measurement: 12:05:08



correlated color temperature (CCT) 4,103 K
 TLCI 95

Reference Spectrum Plank-Daylight Mix

	Lightness	Chroma	Hue
R	2	1	0
R/Y	0	0	-1
Y	0	0	-1
Y/G	0	0	-1
G	0	0	-1
G/C	0	0	-1
C	0	0	-1
C/B	0	0	-1
B	0	-1	-1
B/M	1	0	1
M	1	0	1
M/R	1	0	1



Test Colour	Value	Test Colour	Value	Test Colour	Value
Q1 Dark skin	92	Q7 Orange	99	Q13 Blue	95
Q2 Light skin	98	Q8 Purplish blue	97	Q14 Green	93
Q3 Blue sky	98	Q9 Moderate red	97	Q15 Red	98
Q4 Foliage	97	Q10 Purple	98	Q16 Yellow	90
Q5 Blue flower	99	Q11 Yellow green	90	Q17 Magenta	97
Q6 Bluish green	90	Q12 Orange yellow	98	Q18 Cyan	91