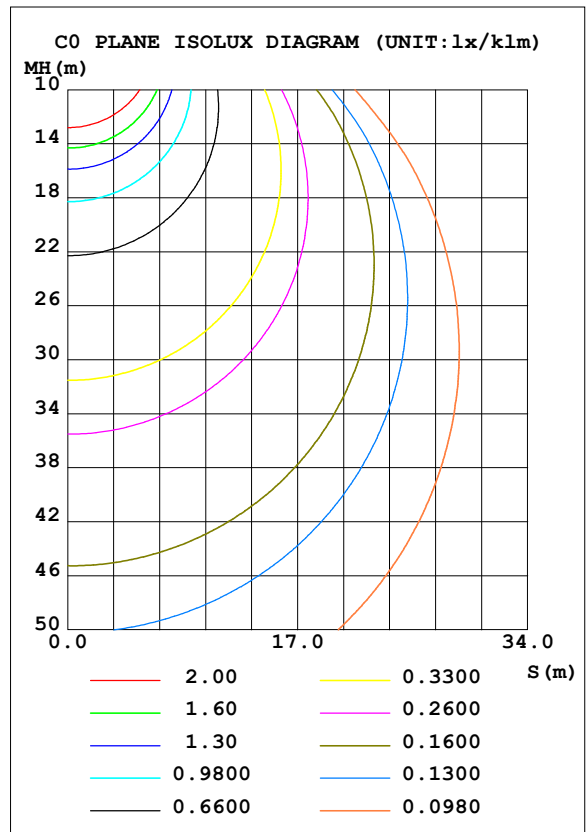
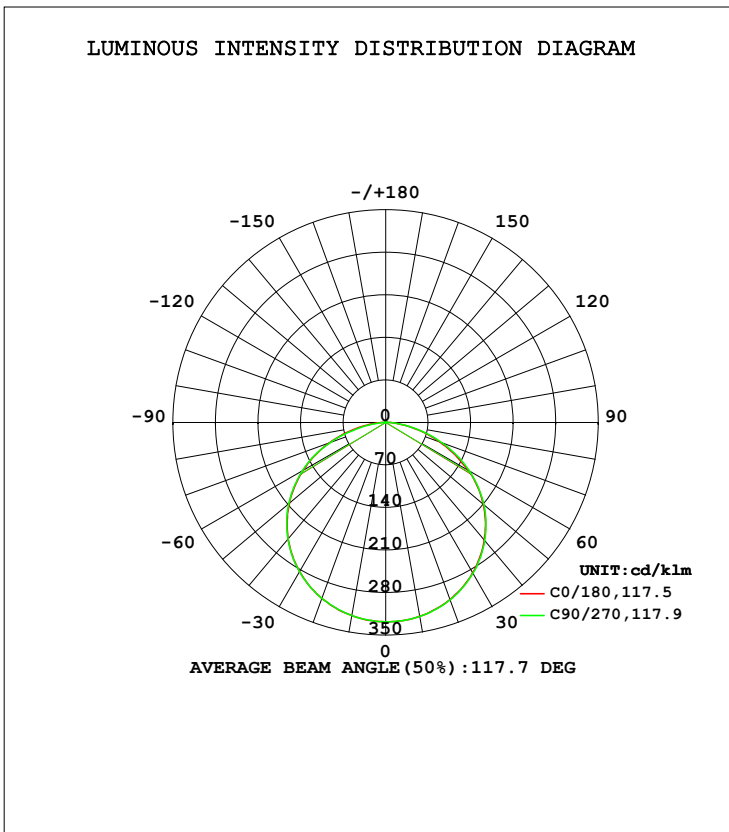


**LUMINAIRE PHOTOMETRIC TEST REPORT**

Test:U:24.000V I:0.8709A P:20.902W PF:1.0000 Freq:0Hz Lamp Flux:3004.27x1 lm		
NAME: UB-IS-35K90C	TYPE:LED Strip	WEIGHT:Kg
SPEC.:21.6W	DIM.: 1000*10*2(MM)	SERIAL No.:001
MFR.: Flexfire LEDs, Inc.	SUR.:1000*10(MM)	Shielding Angle:120

DATA OF LAMP		PHOTOMETRIC DATA Eff: 143.73 lm/W			
MODEL	SMD /LED	I <sub>max</sub> (cd/klm)	328.1	S/MH(C0/180)	1.29
NOMINAL POWER(W)	20.9	LOR(%)	100.0	S/MH(C90/270)	1.29
RATED VOLTAGE(V)	24	TOTAL FLUX(lm/klm)	1000.0	η UP, DN(C0-180)	0.6,49.6
NOMINAL FLUX(lm)	3004.27	CIE CLASS	DIRECT	η UP, DN(C180-360)	0.5,49.3
LAMPS INSIDE	1	η up(%)	1.1	CIBSE SHR NOM	1.50
TEST VOLTAGE(V)	24	η down(%)	98.9	CIBSE SHR MAX	1.50



C Range: 0 - 360DEG  
 C Interval: 22.5DEG  
 Test Speed: HIGH  
 Temperature:25.0DEG  
 Test Date:2019-11-25

γ Range: 0 - 180DEG  
 γ Interval: 1.0DEG  
 Test System:EVERFINE GO-2000B\_V1 SYSTEM V2.00.421  
 Humidity:65.0%  
 Test Distance:7.000m [K=1.0000]  
 Remarks:

**ZONAL FLUX DIAGRAM**

ZONAL FLUX DIAGRAM:

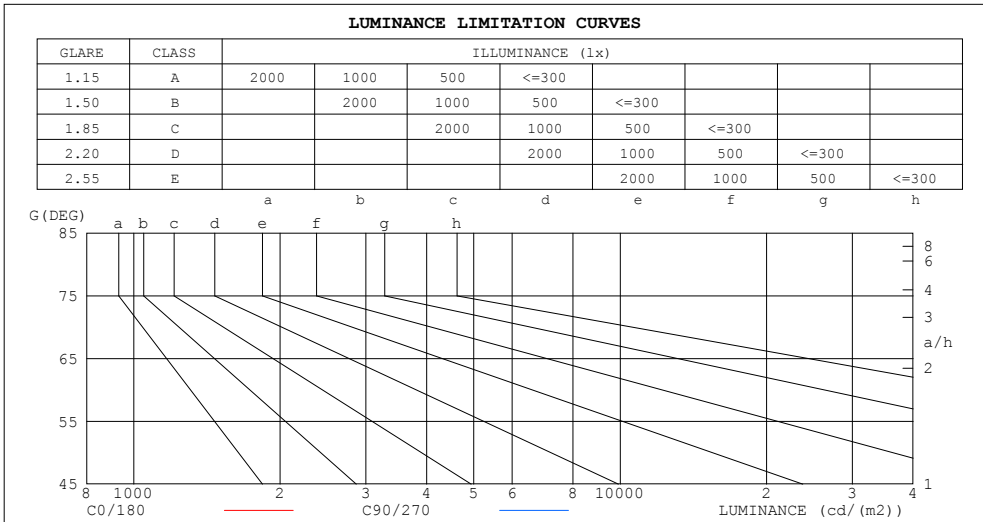
$\gamma$	C0	C45	C90	C135	C180	C225	C270	C315	$\gamma$	$\Phi$ zone	$\Phi$ total	%lum, lamp
10	323.8	324.2	324.0	323.2	322.7	322.2	322.6	323.3	0- 10	31.08	31.08	3.11,3.11
20	309.9	310.7	310.4	308.8	307.8	307.1	307.8	309.0	10- 20	89.61	120.7	12.1,12.1
30	286.1	287.3	287.0	284.8	283.5	282.8	283.7	285.4	20- 30	137.5	258.2	25.8,25.8
40	252.7	254.2	253.8	251.2	249.9	249.4	250.5	252.2	30- 40	168.6	426.8	42.7,42.7
50	209.8	211.2	210.9	208.3	207.2	206.9	208.3	209.8	40- 50	178.5	605.4	60.5,60.5
60	156.7	158.9	158.8	156.6	156.5	156.6	157.8	158.9	50- 60	164.7	770.1	77,77
70	94.75	99.17	99.09	98.04	99.03	99.47	96.58	100.7	60- 70	127.1	897.2	89.7,89.7
80	37.99	38.59	38.94	39.06	40.65	41.01	32.73	41.25	70- 80	72.31	969.5	97,97
90	3.494	3.160	0.5333	3.598	3.466	3.996	0.6159	4.524	80- 90	19.34	988.9	98.9,98.9
100	0.9324	0.8631	0.8659	0.8858	0.7919	0.7807	0.7877	0.7719	90-100	1.359	990.2	99,99
110	1.220	1.214	1.289	1.279	1.035	1.168	1.211	1.077	100-110	1.054	991.3	99.1,99.1
120	1.635	1.574	1.697	1.709	1.449	1.631	1.631	1.481	110-120	1.385	992.7	99.3,99.3
130	2.050	2.023	2.076	2.103	1.884	2.073	2.038	1.885	120-130	1.628	994.3	99.4,99.4
140	2.434	2.381	2.408	2.455	2.284	2.448	2.392	2.261	130-140	1.707	996.0	99.6,99.6
150	2.751	2.680	2.679	2.728	2.620	2.733	2.664	2.575	140-150	1.591	997.6	99.8,99.8
160	2.981	2.902	2.863	2.914	2.883	2.926	2.846	2.800	150-160	1.288	998.9	99.9,99.9
170	3.108	3.035	2.976	3.017	3.080	3.073	2.981	2.974	160-170	0.8396	999.7	100,100
180	3.132	3.108	3.029	3.036	3.130	3.103	3.034	3.038	170-180	0.2904	1000	100,100
DEG	LUMINOUS INTENSITY:cd/klm									UNIT:lm/klm		

C Range: 0 - 360DEG  
 C Interval: 22.5DEG  
 Test Speed: HIGH  
 Temperature:25.0DEG  
 Test Date:2019-11-25

$\gamma$  Range: 0 - 180DEG  
 $\gamma$  Interval: 1.0DEG  
 Test System:EVERFINE GO-2000B\_V1 SYSTEM V2.00.421  
 Humidity:65.0%  
 Test Distance:7.000m [K=1.0000]  
 Remarks:

**LUMINANCE LIMITATION CURVES**

Test:U:24.000V I:0.8709A P:20.902W PF:1.0000 Freq:0Hz Lamp Flux:3004.27x1 lm		
NAME: UB-IS-35K90C	TYPE:LED Strip	WEIGHT:Kg
SPEC.:21.6W	DIM.: 1000*10*2 (MM)	SERIAL No.:001
MFR.: Flexfire LEDs, Inc.	SUR.:1000*10 (MM)	Shielding Angle:120



LUMINANCE cd/(m2)		
G (DEG)	C0/180	C90/270
85	51723	53589
80	65670	67410
75	76523	79160
70	83168	87086
65	89324	92207
60	94091	95439
55	96735	97418
50	97978	98636
45	98646	99250

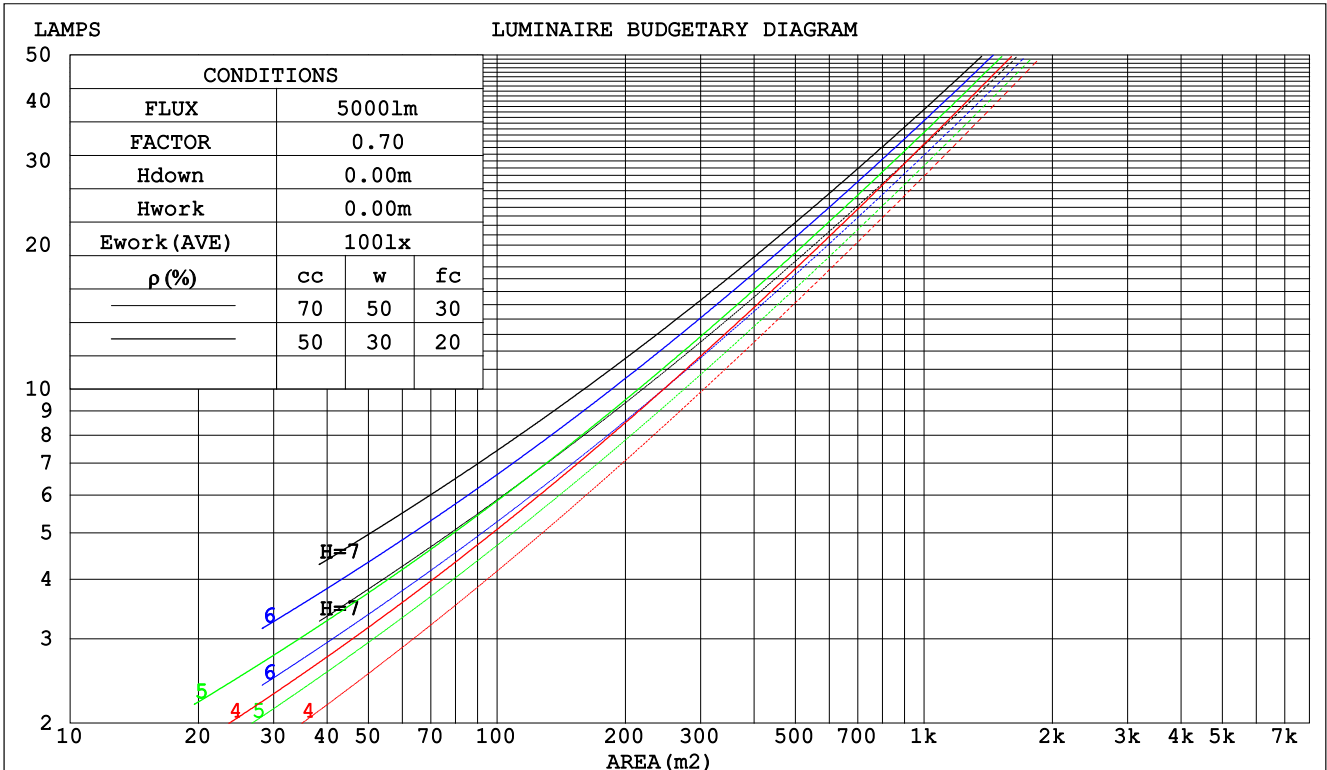
C Range: 0 - 360DEG  
 C Interval: 22.5DEG  
 Test Speed: HIGH  
 Temperature:25.0DEG  
 Test Date:2019-11-25

$\gamma$  Range: 0 - 180DEG  
 $\gamma$  Interval: 1.0DEG  
 Test System:EVERFINE GO-2000B\_V1 SYSTEM V2.00.421  
 Humidity:65.0%  
 Test Distance:7.000m [K=1.0000]  
 Remarks:

**CU AND LUMINAIRE BUDGETARY ESTIMATE DIAGRAM**

Test:U:24.000V I:0.8709A P:20.902W PF:1.0000 Freq:0Hz Lamp Flux:3004.27x1 lm		
NAME: UB-IS-35K90C	TYPE:LED Strip	WEIGHT:Kg
SPEC.:21.6W	DIM.: 1000*10*2 (MM)	SERIAL No.:001
MFR.: Flexfire LEDs, Inc.	SUR.:1000*10 (MM)	Shielding Angle:120

ρcc	80%			70%			50%			30%			10%			0
ρw	50%	30%	10%	50%	30%	10%	50%	30%	10%	50%	30%	10%	50%	30%	10%	0
ρfc	20%			20%			20%			20%			20%			0
RCR	RCR:Room Cavity Ratio															
	Coefficients of Utilization(CU)															
0.0	1.19	1.19	1.19	1.16	1.16	1.16	1.10	1.10	1.10	1.06	1.06	1.06	1.01	1.01	1.01	.99
1.0	1.03	.99	.95	1.01	.97	.93	.97	.93	.90	.92	.90	.87	.89	.87	.85	.82
2.0	.90	.83	.77	.88	.81	.76	.84	.79	.74	.81	.76	.72	.77	.74	.70	.68
3.0	.79	.70	.64	.77	.69	.63	.74	.67	.62	.71	.65	.61	.68	.63	.59	.57
4.0	.69	.61	.54	.68	.60	.53	.65	.58	.52	.63	.57	.52	.61	.55	.51	.48
5.0	.62	.53	.46	.61	.52	.46	.58	.51	.45	.56	.50	.44	.54	.49	.44	.42
6.0	.56	.47	.40	.55	.46	.40	.53	.45	.39	.51	.44	.39	.49	.43	.38	.36
7.0	.50	.41	.35	.49	.41	.35	.48	.40	.35	.46	.39	.34	.45	.39	.34	.32
8.0	.46	.37	.31	.45	.37	.31	.44	.36	.31	.42	.36	.31	.41	.35	.30	.28
9.0	.42	.34	.28	.41	.33	.28	.40	.33	.28	.39	.32	.28	.38	.32	.27	.26
10.0	.39	.31	.25	.38	.31	.25	.37	.30	.25	.36	.30	.25	.35	.29	.25	.23



C Range: 0 - 360DEG  
 C Interval: 22.5DEG  
 Test Speed: HIGH  
 Temperature:25.0DEG  
 Test Date:2019-11-25

γ Range: 0 - 180DEG  
 γ Interval: 1.0DEG  
 Test System:EVERFINE GO-2000B\_V1 SYSTEM V2.00.421  
 Humidity:65.0%  
 Test Distance:7.000m [K=1.0000]  
 Remarks:

WEC AND CCEC

Test:U:24.000V I:0.8709A P:20.902W PF:1.0000 Freq:0Hz Lamp Flux:3004.27x1 lm								
NAME: UB-IS-35K90C			TYPE:LED Strip			WEIGHT:Kg		
SPEC.:21.6W			DIM.: 1000*10*2(MM)			SERIAL No.:001		
MFR.: Flexfire LEDs, Inc.			SUR.:1000*10(MM)			Shielding Angle:120		

ρcc	80%			70%			50%			30%			10%			0
ρw	50%	30%	10%	50%	30%	10%	50%	30%	10%	50%	30%	10%	50%	30%	10%	0
ρfc	20%			20%			20%			20%			20%			0
RCR	RCR:Room Cavity Ratio						Wall Exitance Coefficients(WEC)									
0.0																
1.0	.314	.179	.057	.307	.175	.056	.293	.168	.054	.280	.161	.052	.268	.155	.050	
2.0	.295	.162	.050	.289	.159	.049	.276	.154	.048	.265	.149	.047	.255	.144	.045	
3.0	.273	.145	.044	.267	.143	.043	.256	.139	.042	.246	.135	.041	.237	.131	.041	
4.0	.252	.131	.038	.247	.129	.038	.237	.126	.038	.228	.122	.037	.219	.119	.036	
5.0	.233	.118	.034	.228	.117	.034	.219	.114	.034	.211	.111	.033	.204	.109	.033	
6.0	.215	.108	.031	.211	.107	.031	.204	.104	.030	.196	.102	.030	.190	.100	.030	
7.0	.200	.099	.028	.197	.098	.028	.190	.096	.028	.183	.094	.027	.177	.092	.027	
8.0	.187	.091	.026	.184	.090	.026	.178	.089	.025	.172	.087	.025	.166	.085	.025	
9.0	.175	.085	.024	.172	.084	.024	.167	.082	.023	.161	.081	.023	.156	.079	.023	
10.0	.165	.079	.022	.162	.078	.022	.157	.077	.022	.152	.076	.021	.148	.074	.021	

ρcc	80%			70%			50%			30%			10%			0
ρw	50%	30%	10%	50%	30%	10%	50%	30%	10%	50%	30%	10%	50%	30%	10%	0
ρfc	20%			20%			20%			20%			20%			0
RCR	RCR:Room Cavity Ratio						Ceiling Cavity Exitance Coefficients(CCEC)									
0.0	.199	.199	.199	.170	.170	.170	.116	.116	.116	.067	.067	.067	.021	.021	.021	
1.0	.189	.165	.143	.162	.141	.123	.111	.097	.085	.064	.056	.049	.020	.018	.016	
2.0	.181	.141	.106	.155	.121	.092	.106	.084	.064	.061	.049	.038	.020	.016	.012	
3.0	.174	.123	.083	.149	.106	.072	.102	.074	.050	.059	.043	.030	.019	.014	.010	
4.0	.166	.110	.067	.143	.095	.058	.098	.066	.041	.057	.039	.024	.018	.013	.008	
5.0	.159	.099	.056	.136	.086	.048	.094	.060	.034	.054	.035	.020	.018	.012	.007	
6.0	.152	.091	.048	.130	.079	.041	.090	.055	.029	.052	.032	.017	.017	.011	.006	
7.0	.145	.084	.042	.125	.073	.036	.086	.051	.026	.050	.030	.015	.016	.010	.005	
8.0	.138	.078	.037	.119	.068	.033	.082	.048	.023	.048	.028	.014	.016	.009	.005	
9.0	.132	.074	.034	.114	.064	.030	.079	.045	.021	.046	.026	.013	.015	.009	.004	
10.0	.126	.069	.031	.109	.060	.027	.076	.042	.019	.044	.025	.012	.014	.008	.004	

C Range: 0 - 360DEG  
 C Interval: 22.5DEG  
 Test Speed: HIGH  
 Temperature:25.0DEG  
 Test Date:2019-11-25

γ Range: 0 - 180DEG  
 γ Interval: 1.0DEG  
 Test System:EVERFINE GO-2000B\_V1 SYSTEM V2.00.421  
 Humidity:65.0%  
 Test Distance:7.000m [K=1.0000]  
 Remarks:

**UGR(Unified Glare Rating) Table**

Test:U:24.000V I:0.8709A P:20.902W PF:1.0000 Freq:0Hz Lamp Flux:3004.27x1 lm										
NAME: UB-IS-35K90C					TYPE:LED Strip			WEIGHT:Kg		
SPEC.:21.6W					DIM.: 1000*10*2(MM)			SERIAL No.:001		
MFR.: Flexfire LEDs, Inc.					SUR.:1000*10(MM)			Shielding Angle:120		
ceiling/cavity	0.7	0.7	0.5	0.5	0.3	0.7	0.7	0.5	0.5	0.3
walls	0.5	0.3	0.5	0.3	0.3	0.5	0.3	0.5	0.3	0.3
working plane	0.2	0.2	0.2	0.2	0.2	0.2	0.2	0.2	0.2	0.2
Room dimensions	Viewed crosswise					Viewed endwise				
x = 2H y = 2H	28.8	30.3	29.1	30.6	30.8	28.9	30.4	29.1	30.6	30.8
3H	30.3	31.7	30.6	32.0	32.2	30.4	31.8	30.7	32.1	32.3
4H	30.9	32.2	31.2	32.5	32.8	31.0	32.3	31.3	32.6	32.9
6H	31.3	32.5	31.6	32.8	33.1	31.4	32.7	31.7	32.9	33.2
8H	31.4	32.6	31.7	32.9	33.2	31.5	32.7	31.9	33.0	33.3
12H	31.4	32.6	31.8	32.9	33.2	31.5	32.7	31.9	33.0	33.4
4H 2H	29.4	30.8	29.8	31.1	31.3	29.5	30.8	29.8	31.1	31.4
3H	31.1	32.3	31.5	32.6	33.0	31.2	32.4	31.6	32.7	33.0
4H	31.8	32.9	32.2	33.2	33.6	31.9	33.0	32.3	33.3	33.7
6H	32.3	33.3	32.7	33.6	34.0	32.4	33.4	32.8	33.7	34.1
8H	32.5	33.3	32.9	33.7	34.1	32.6	33.5	33.0	33.8	34.3
12H	32.5	33.4	33.0	33.8	34.2	32.7	33.5	33.1	33.9	34.3
8H 4H	32.1	33.0	32.5	33.4	33.8	32.2	33.1	32.6	33.4	33.9
6H	32.7	33.4	33.2	33.9	34.3	32.8	33.5	33.3	34.0	34.4
8H	32.9	33.6	33.4	34.0	34.5	33.0	33.7	33.5	34.1	34.6
12H	33.1	33.6	33.6	34.1	34.6	33.2	33.7	33.7	34.2	34.7
12H 4H	32.1	32.9	32.5	33.3	33.7	32.2	33.0	32.6	33.4	33.8
6H	32.7	33.4	33.2	33.8	34.3	32.8	33.5	33.3	33.9	34.4
8H	33.0	33.6	33.5	34.0	34.5	33.1	33.7	33.6	34.1	34.6
Variations with the observer position at spacings:										
S = 1.0H	+ 0.2 / - 0.2					+ 0.1 / - 0.2				
1.5H	+ 0.2 / - 0.3					+ 0.2 / - 0.3				
2.0H	+ 0.2 / - 0.4					+ 0.2 / - 0.3				

CIE Pub.117, 3004 lm Total Lamp Luminous Flux Corrected (8log(F/F0) = 3.8)  
 Area: 0.01 m2

C Range: 0 - 360DEG  
 C Interval: 22.5DEG  
 Test Speed: HIGH  
 Temperature:25.0DEG  
 Test Date:2019-11-25

γ Range: 0 - 180DEG  
 γ Interval: 1.0DEG  
 Test System:EVERFINE GO-2000B\_V1 SYSTEM V2.00.421  
 Humidity:65.0%  
 Test Distance:7.000m [K=1.0000]  
 Remarks:

**UTILIZATION FACTORS TABLE**

Test:U:24.000V I:0.8709A P:20.902W PF:1.0000 Freq:0Hz Lamp Flux:3004.27x1 lm		
NAME: UB-IS-35K90C	TYPE:LED Strip	WEIGHT:Kg
SPEC.:21.6W	DIM.: 1000*10*2(MM)	SERIAL No.:001
MFR.: Flexfire LEDs, Inc.	SUR.:1000*10(MM)	Shielding Angle:120

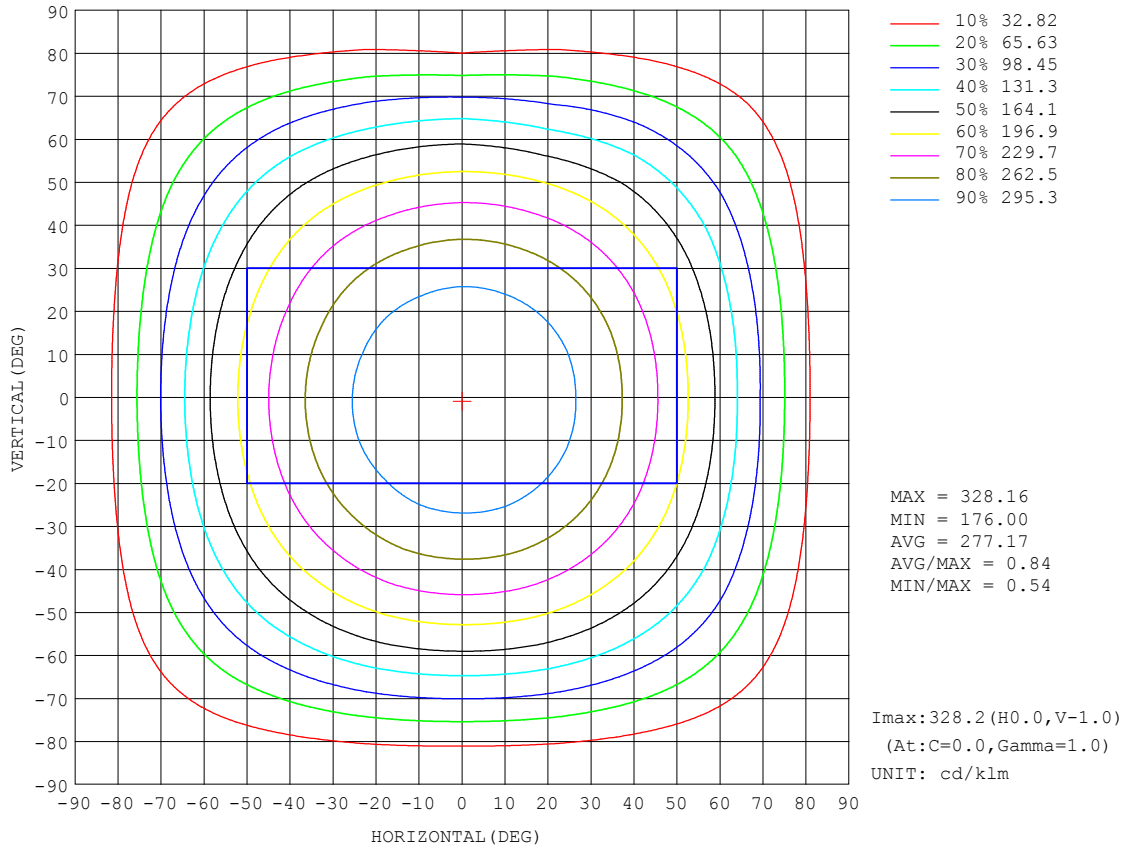
REFLECTANCE										
Ceiling	0.8	0.8	0.8	0.7	0.7	0.7	0.5	0.5	0.5	0
Walls	0.7	0.5	0.3	0.7	0.5	0.3	0.7	0.5	0.3	0
Working plane	0.2	0.2	0.2	0.2	0.2	0.2	0.2	0.2	0.2	0
ROOM INDEX	UTILIZATION FACTORS (PERCENT) $k(RI) \times RCR = 5$									
k = 0.60	56	45	38	56	44	37	54	44	37	31
0.80	66	55	47	65	54	47	63	53	46	39
1.00	75	64	56	74	63	56	71	64	55	48
1.25	82	71	64	81	71	64	78	69	63	55
1.50	87	77	70	85	76	69	82	74	68	60
2.00	94	85	79	92	84	78	89	82	76	68
2.50	98	90	84	96	89	83	92	86	81	72
3.00	102	95	89	99	93	88	95	90	85	77
4.00	106	100	95	103	98	94	99	94	91	82
5.00	108	103	99	106	101	97	101	97	94	85
ROOM INDEX	UF(total)									Direct
According to DIN EN 13032-2 2004			Suspended				SHRNOM = 1.25			

C Range: 0 - 360DEG  
 C Interval: 22.5DEG  
 Test Speed: HIGH  
 Temperature:25.0DEG  
 Test Date:2019-11-25

$\gamma$  Range: 0 - 180DEG  
 $\gamma$  Interval: 1.0DEG  
 Test System:EVERFINE GO-2000B\_V1 SYSTEM V2.00.421  
 Humidity:65.0%  
 Test Distance:7.000m [K=1.0000]  
 Remarks:

**ISOCANDELA DIAGRAM**

Test:U:24.000V I:0.8709A P:20.902W PF:1.0000 Freq:0Hz Lamp Flux:3004.27x1 lm		
NAME: UB-IS-35K90C	TYPE:LED Strip	WEIGHT:Kg
SPEC.:21.6W	DIM.: 1000*10*2 (MM)	SERIAL No.:001
MFR.: Flexfire LEDs, Inc.	SUR.:1000*10 (MM)	Shielding Angle:120



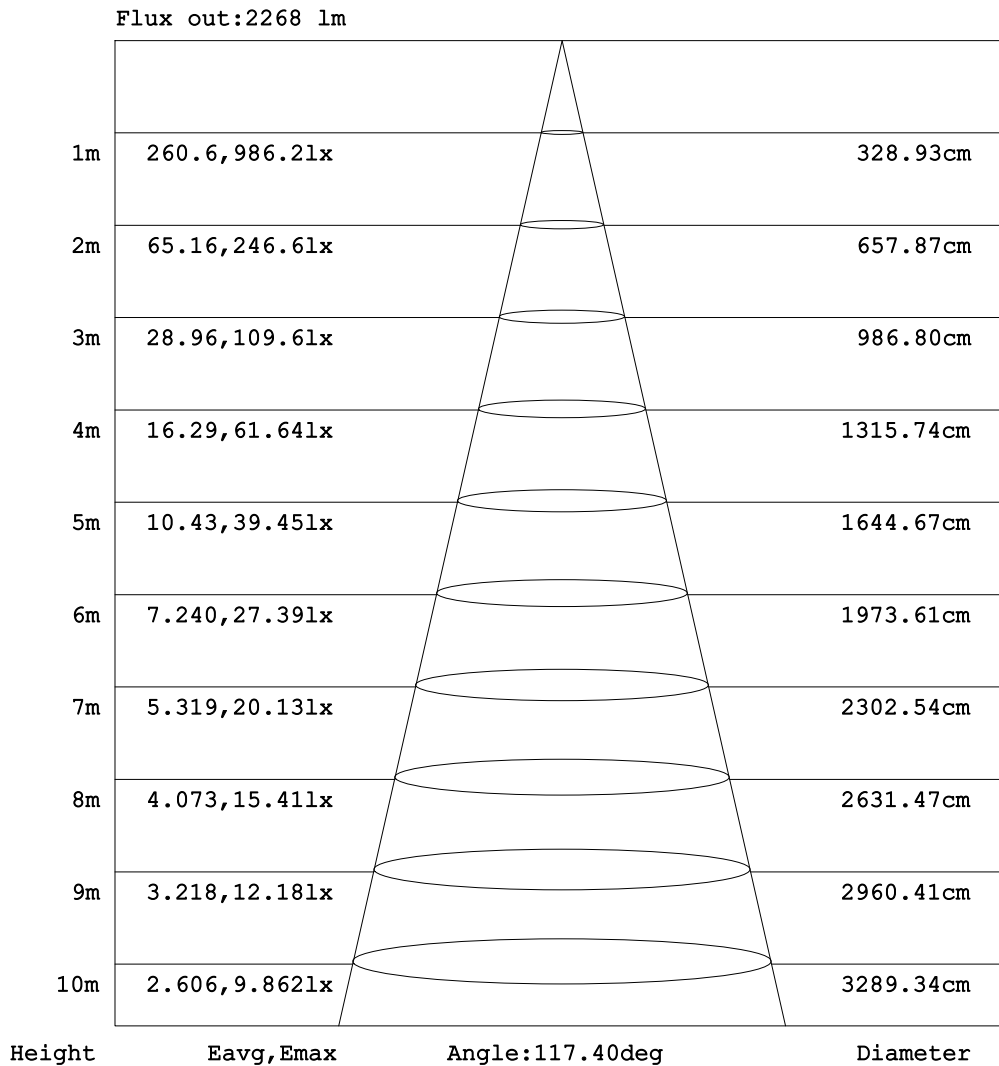
C Range: 0 - 360DEG  
 C Interval: 22.5DEG  
 Test Speed: HIGH  
 Temperature:25.0DEG  
 Test Date:2019-11-25

γ Range: 0 - 180DEG  
 γ Interval: 1.0DEG  
 Test System:EVERFINE GO-2000B\_V1 SYSTEM V2.00.421  
 Humidity:65.0%  
 Test Distance:7.000m [K=1.0000]  
 Remarks:



**AAI Figure**

Test:U:24.000V I:0.8709A P:20.902W PF:1.0000 Freq:0Hz Lamp Flux:3004.27x1 lm		
NAME: UB-IS-35K90C	TYPE:LED Strip	WEIGHT:Kg
SPEC.:21.6W	DIM.: 1000*10*2 (MM)	SERIAL No.:001
MFR.: Flexfire LEDs, Inc.	SUR.:1000*10 (MM)	Shielding Angle:120



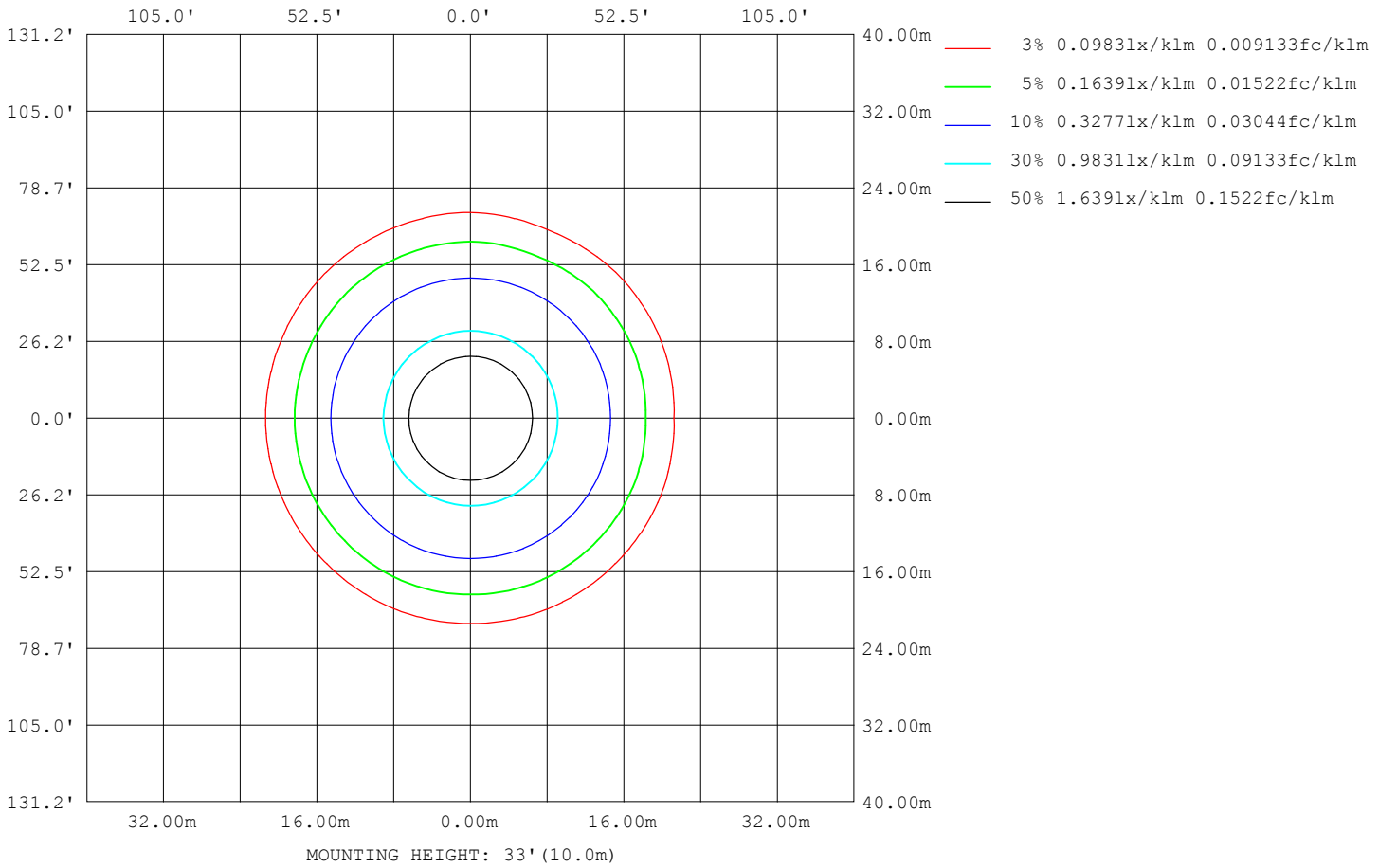
Note:The Curves indicate the illuminated area and the average illumination when the luminaire is at different distance.

C Range: 0 - 360DEG  
 C Interval: 22.5DEG  
 Test Speed: HIGH  
 Temperature:25.0DEG  
 Test Date:2019-11-25

γ Range: 0 - 180DEG  
 γ Interval: 1.0DEG  
 Test System:EVERFINE GO-2000B\_V1 SYSTEM V2.00.421  
 Humidity:65.0%  
 Test Distance:7.000m [K=1.0000]  
 Remarks:

**ISOLUX DIAGRAM**

Test:U:24.000V I:0.8709A P:20.902W PF:1.0000 Freq:0Hz Lamp Flux:3004.27x1 lm		
NAME: UB-IS-35K90C	TYPE:LED Strip	WEIGHT:Kg
SPEC.:21.6W	DIM.: 1000*10*2 (MM)	SERIAL No.:001
MFR.: Flexfire LEDs, Inc.	SUR.:1000*10 (MM)	Shielding Angle:120



C Range: 0 - 360DEG  
 C Interval: 22.5DEG  
 Test Speed: HIGH  
 Temperature:25.0DEG  
 Test Date:2019-11-25

γ Range: 0 - 180DEG  
 γ Interval: 1.0DEG  
 Test System:EVERFINE GO-2000B\_V1 SYSTEM V2.00.421  
 Humidity:65.0%  
 Test Distance:7.000m [K=1.0000]  
 Remarks:

**LED Avg.L Report**

Test:U:24.000V I:0.8709A P:20.902W PF:1.0000 Freq:0Hz Lamp Flux:3004.27x1 lm		
NAME: UB-IS-35K90C	TYPE:LED Strip	WEIGHT:Kg
SPEC.:21.6W	DIM.: 1000*10*2 (MM)	SERIAL No.:001
MFR.: Flexfire LEDs, Inc.	SUR.:1000*10 (MM)	Shielding Angle:120

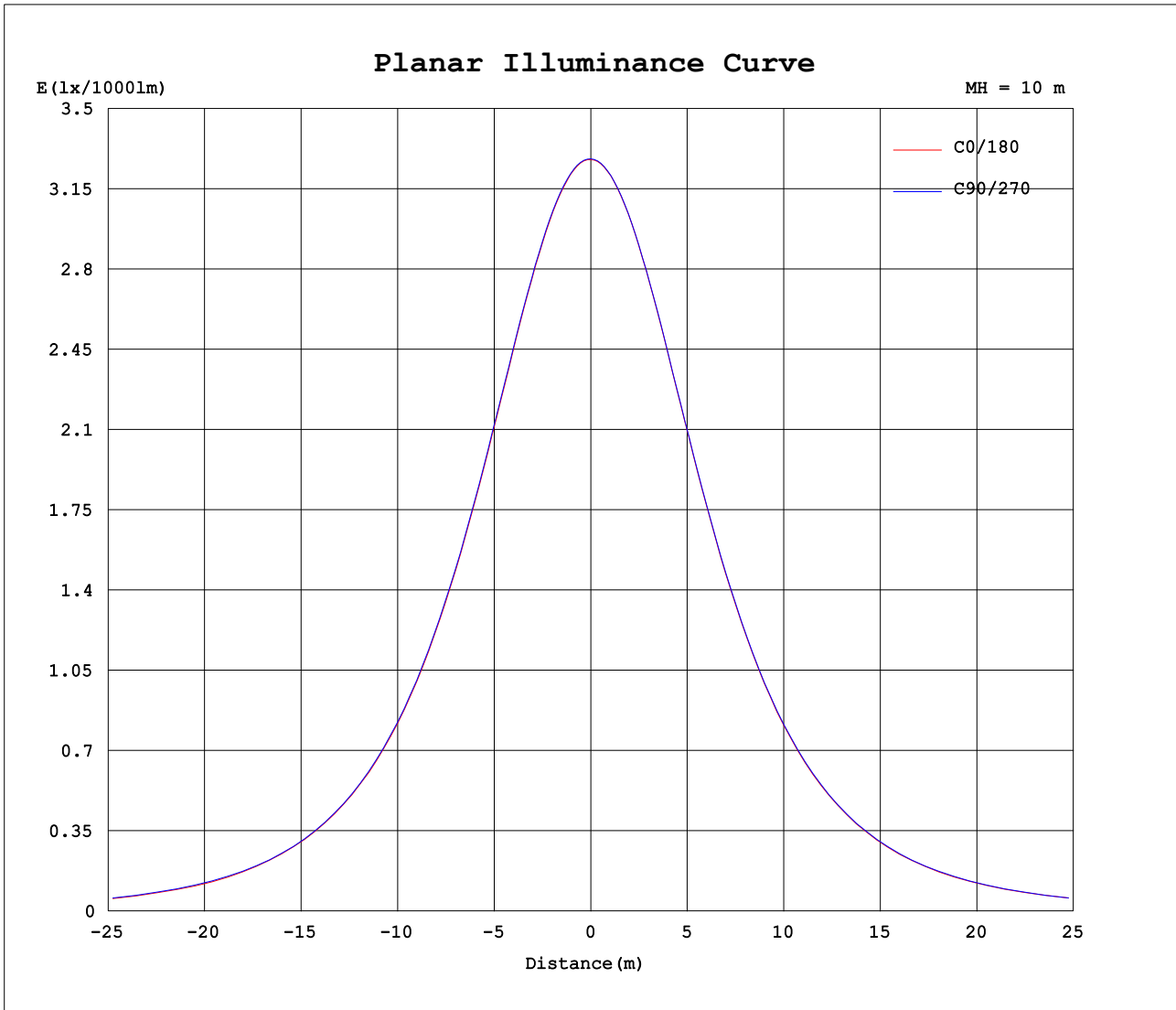
AvgL	cd/m2
L_0~180 (65) av	90335
L_0~180 (75) av	78414
L_0~180 (85) av	55547
L_90~270 (65) av	92193
L_90~270 (75) av	76689
L_90~270 (85) av	41417
L_45 (65) av	91889
L_45 (75) av	80012
L_45 (85) av	57165

Standard: GB/T 29293-2012

C Range: 0 - 360DEG  
 C Interval: 22.5DEG  
 Test Speed: HIGH  
 Temperature:25.0DEG  
 Test Date:2019-11-25

γ Range: 0 - 180DEG  
 γ Interval: 1.0DEG  
 Test System:EVERFINE GO-2000B\_V1 SYSTEM V2.00.421  
 Humidity:65.0%  
 Test Distance:7.000m [K=1.0000]  
 Remarks:

Planar Illuminance Curve



C Range: 0 - 360DEG  
C Interval: 22.5DEG  
Test Speed: HIGH  
Temperature:25.0DEG  
Test Date:2019-11-25

$\gamma$  Range: 0 - 180DEG  
 $\gamma$  Interval: 1.0DEG  
Test System:EVERFINE GO-2000B\_V1 SYSTEM V2.00.421  
Humidity:65.0%  
Test Distance:7.000m [K=1.0000]  
Remarks:

LUMINOUS DISTRIBUTION INTENSITY DATA

Test:U:24.000V I:0.8709A P:20.902W PF:1.0000 Freq:0Hz Lamp Flux:3004.27x1 lm		
NAME: UB-IS-35K90C	TYPE:LED Strip	WEIGHT:Kg
SPEC.:21.6W	DIM.: 1000*10*2(MM)	SERIAL No.:001
MFR.: Flexfire LEDs, Inc.	SUR.:1000*10(MM)	Shielding Angle:120

Table--1

UNIT: cd/klm

C (DEG) \ γ (DEG)	0	22.5	45	67.5	90	112.5	135	157.5	180	202.5	225	247.5	270	292.5	315	337.5			
0	328	328	328	328	328	328	328	328	328	328	328	328	328	328	328	328			
5	327	327	327	327	327	327	327	327	327	326	326	326	326	327	327	327			
10	324	324	324	324	324	324	323	323	323	322	322	322	323	323	323	324			
15	318	319	319	319	318	318	317	317	316	316	316	316	316	317	317	318			
20	310	311	311	311	310	310	309	308	308	307	307	307	308	308	309	310			
25	299	300	300	301	300	300	298	297	297	296	296	296	297	297	298	299			
30	286	287	287	288	287	287	285	284	284	282	283	283	284	284	285	286			
35	271	272	272	273	272	271	269	268	268	267	267	267	268	269	270	270			
40	253	254	254	255	254	253	251	250	250	249	249	249	251	251	252	253			
45	232	234	234	235	233	233	231	230	230	229	229	229	231	231	232	233			
50	210	211	211	212	211	211	208	207	207	206	207	207	208	209	210	210			
55	185	186	186	187	186	186	183	183	183	182	183	183	184	184	185	186			
60	157	159	159	160	159	159	157	156	157	156	157	157	158	151	159	159			
65	126	130	130	131	130	130	128	128	128	128	129	129	130	125	130	130			
70	94.8	99.8	99.2	100	99.1	99.5	98.0	98.1	99.0	98.4	99.5	99.3	96.6	97.2	101	100			
75	66.0	66.6	68.1	68.9	68.2	68.7	67.8	68.0	69.1	68.9	69.7	69.5	64.0	69.9	70.3	69.9			
80	38.0	37.9	38.6	39.2	38.9	39.6	39.1	39.4	40.6	40.5	41.0	40.7	32.7	40.8	41.2	40.5			
85	15.0	15.0	14.9	15.7	15.5	16.3	16.0	16.5	17.2	17.0	17.7	17.4	8.49	17.5	17.7	16.9			
90	3.49	3.39	3.16	3.28	0.53	3.51	3.60	3.63	3.47	3.35	4.00	4.22	0.62	4.26	4.52	4.23			
95	1.00	1.07	1.02	0.79	0.67	0.80	1.01	0.98	0.71	0.76	0.82	0.79	0.60	0.91	1.14	1.02			
100	0.93	0.92	0.86	0.86	0.87	0.88	0.89	0.94	0.79	0.80	0.78	0.79	0.79	0.96	0.77	0.82			
105	1.04	1.01	1.02	1.05	1.08	1.09	1.08	1.06	0.86	0.89	0.95	1.00	1.00	0.95	0.90	0.88			
110	1.22	1.19	1.21	1.25	1.29	1.30	1.28	1.28	1.04	1.10	1.17	1.23	1.21	1.15	1.08	1.02			
115	1.43	1.40	1.40	1.46	1.50	1.52	1.50	1.50	1.23	1.32	1.40	1.45	1.43	1.35	1.28	1.20			
120	1.64	1.61	1.57	1.65	1.70	1.72	1.71	1.72	1.45	1.55	1.63	1.67	1.63	1.56	1.48	1.43			
125	1.84	1.82	1.83	1.85	1.89	1.92	1.91	1.93	1.67	1.77	1.86	1.89	1.84	1.75	1.69	1.67			
130	2.05	2.02	2.02	2.04	2.08	2.11	2.10	2.14	1.88	1.99	2.07	2.09	2.04	1.95	1.89	1.88			
135	2.25	2.21	2.21	2.22	2.25	2.28	2.29	2.34	2.09	2.18	2.27	2.27	2.22	2.13	2.08	2.09			
140	2.43	2.39	2.38	2.38	2.41	2.44	2.46	2.52	2.28	2.37	2.45	2.44	2.39	2.30	2.26	2.29			
145	2.60	2.56	2.54	2.53	2.56	2.58	2.60	2.67	2.46	2.52	2.60	2.59	2.54	2.46	2.43	2.46			
150	2.75	2.70	2.68	2.67	2.68	2.70	2.73	2.80	2.62	2.65	2.73	2.71	2.66	2.60	2.57	2.62			
155	2.87	2.82	2.79	2.78	2.78	2.79	2.82	2.91	2.76	2.77	2.83	2.81	2.76	2.71	2.69	2.74			
160	2.98	2.93	2.90	2.87	2.86	2.88	2.91	2.99	2.88	2.88	2.93	2.89	2.85	2.81	2.80	2.88			
165	3.07	3.01	2.98	2.95	2.93	2.95	2.98	3.06	3.00	2.97	3.01	2.96	2.92	2.89	2.90	2.99			
170	3.11	3.05	3.03	3.00	2.98	2.98	3.02	3.09	3.08	3.04	3.07	3.02	2.98	2.96	2.97	3.05			
175	3.12	3.06	3.07	3.03	3.00	3.02	3.03	3.09	3.10	3.07	3.09	3.04	3.00	2.99	3.00	3.06			
180	3.13	3.09	3.11	3.06	3.03	3.02	3.04	3.07	3.13	3.09	3.10	3.06	3.03	3.03	3.04	3.11			

C Range: 0 - 360DEG  
 C Interval: 22.5DEG  
 Test Speed: HIGH  
 Temperature:25.0DEG  
 Test Date:2019-11-25

γ Range: 0 - 180DEG  
 γ Interval: 1.0DEG  
 Test System:EVERFINE GO-2000B\_V1 SYSTEM V2.00.421  
 Humidity:65.0%  
 Test Distance:7.000m [K=1.0000]  
 Remarks: