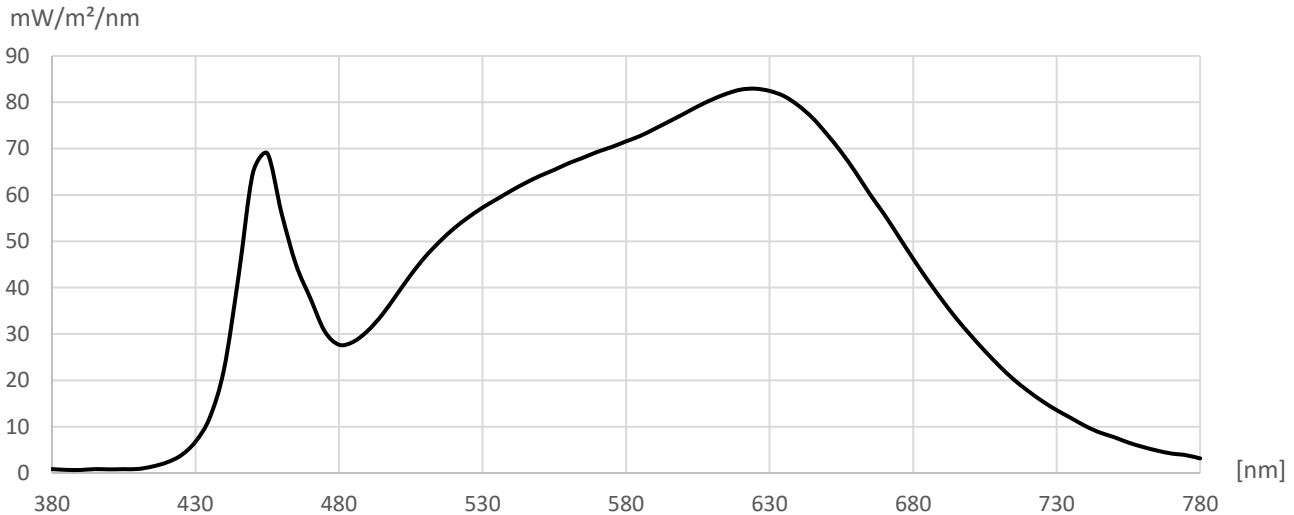


# Measurement Protocol



Manufacturer: Flexfire LEDs, Inc.  
 Type: UltraBright™ Industrial Series LED Strip Light  
 Model: UB-IS-35K90C

Measurement file: UB-IS-35K90C.CSV  
 Date of measurement: 08.05.2023  
 Time of measurement: 12:00:12



R1 = 94.8	Ra = 94.1	Illuminance	4,701.60 lx	CIE1931
R2 = 96.7	Re = 91.4	Ee	16.475 W/m²	x = 0.4031
R3 = 96.2	GAI = 70.5	LER	285.4 lm/W	y = 0.3875
R4 = 93.8				
R5 = 93.5	TLCI = 95.0	Correlated Color Temperature (CCT)	3,523 K	CIE1976
R6 = 93.9		Duv	-0.0009	u' = 0.2356
R7 = 95.1	PPFD			v' = 0.5096
R8 = 89.0	[μmol/m²s]	Saturation	37.30 %	
R9 = 73.8	74.54			CIE1960
R10 = 90.4		Dominant wavelength	580 nm	u = 0.2356
R11 = 93.4		Peak wavelength	625 nm	v = 0.3397
R12 = 73.9				
R13 = 95.5		Flicker frequency	% < 1.0	TM30
R14 = 97.3		Percent Flicker	< 1.0	Rf = 90.0
R15 = 93.2		Flicker index	% < 1.0	Rg = 99.3

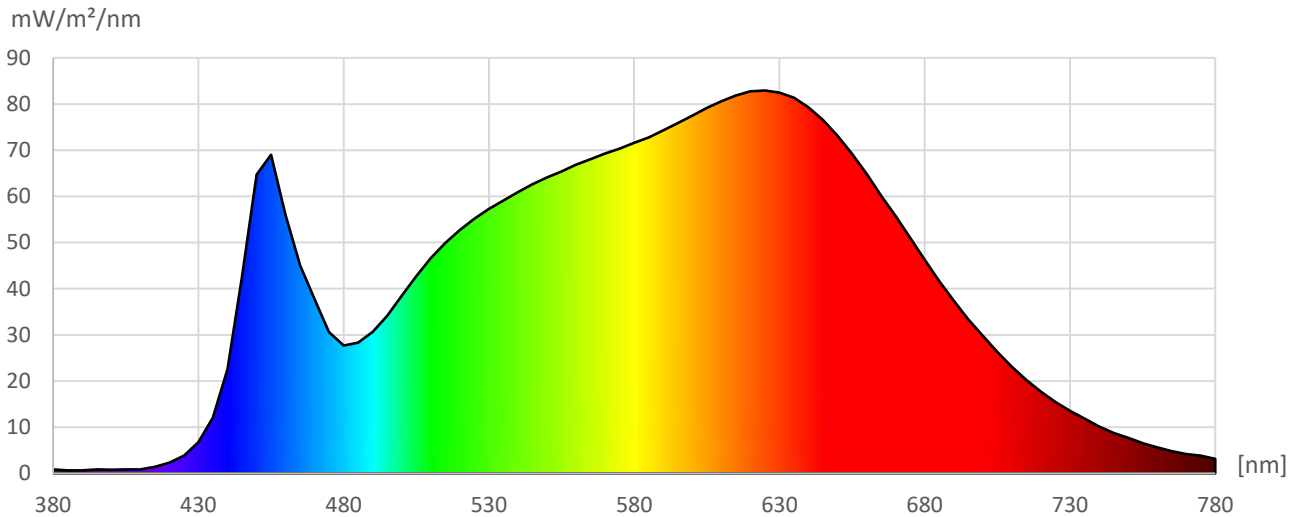
[nm]	mW/m²/nm	[nm]	mW/m²/nm	[nm]	mW/m²/nm	[nm]	mW/m²/nm	[nm]	mW/m²/nm	[nm]	mW/m²/nm	[nm]	mW/m²/nm
380	0.84	440	22.57	500	38.41	560	66.85	620	82.74	680	46.25	740	10.14
385	0.68	445	42.45	505	42.75	565	68.03	625	82.94	685	41.69	745	8.74
390	0.65	450	64.74	510	46.63	570	69.30	630	82.45	690	37.42	750	7.74
395	0.85	455	69.00	515	49.90	575	70.35	635	81.34	695	33.39	755	6.56
400	0.78	460	56.04	520	52.75	580	71.57	640	79.31	700	29.77	760	5.63
405	0.83	465	45.00	525	55.15	585	72.76	645	76.60	705	26.33	765	4.84
410	0.87	470	37.74	530	57.27	590	74.29	650	73.09	710	23.13	770	4.20
415	1.41	475	30.61	535	59.11	595	75.87	655	69.23	715	20.20	775	3.86
420	2.29	480	27.69	540	60.92	600	77.47	660	64.85	720	17.73	780	3.15
425	3.83	485	28.32	545	62.61	605	79.13	665	60.12	725	15.51		
430	6.77	490	30.69	550	64.12	610	80.60	670	55.76	730	13.57		
435	12.00	495	34.13	555	65.42	615	81.85	675	51.01	735	11.87		

# Measurement Protocol



Manufacturer: Flexfire LEDs, Inc.  
 Type: UltraBright™ Industrial Series LED Strip Light  
 Model: UB-IS-35K90C

Measurement file: UB-IS-35K90C.CSV  
 Date of measurement: 08.05.2023  
 Time of measurement: 12:00:12



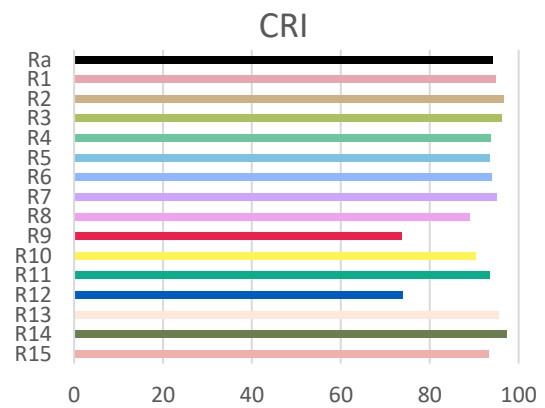
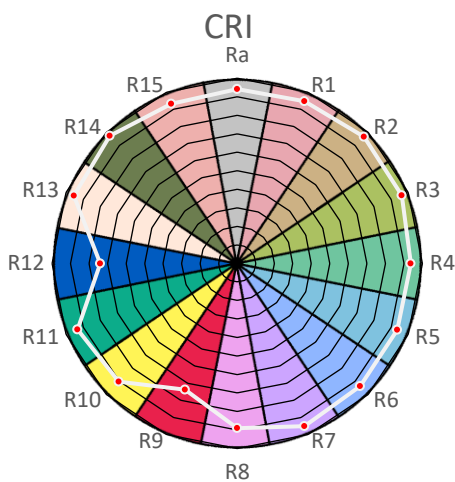
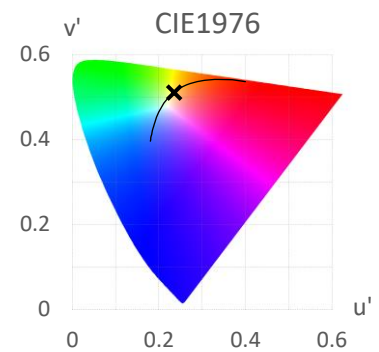
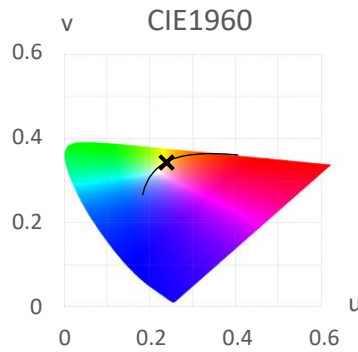
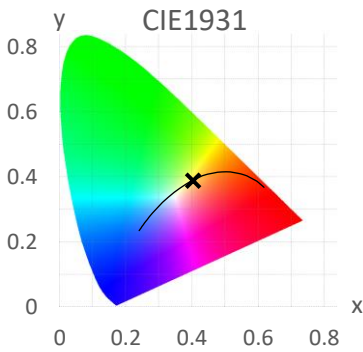
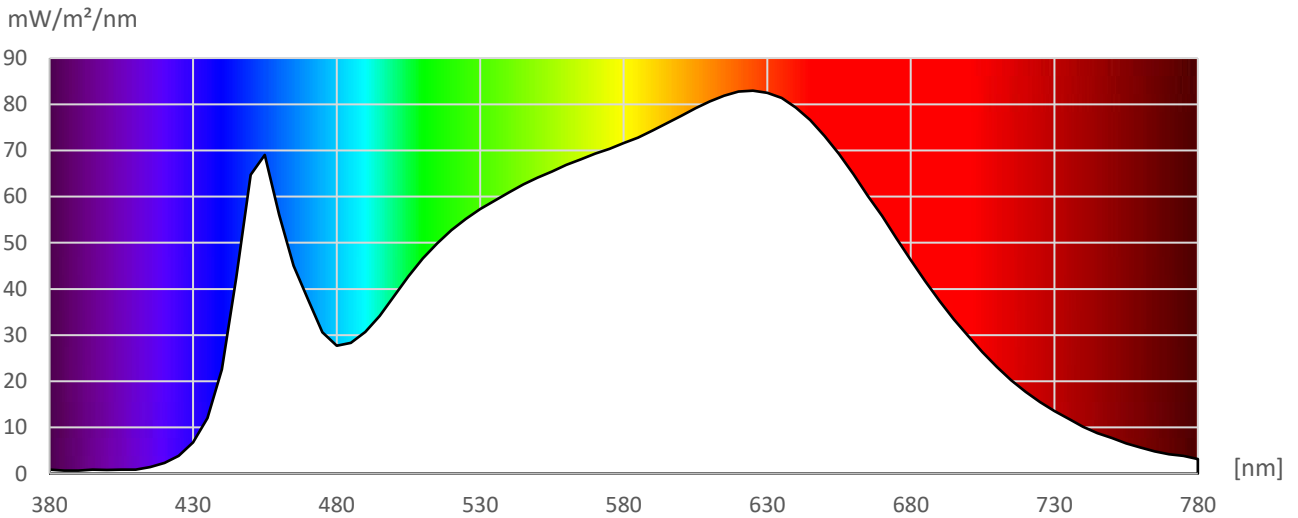
[nm]	mW/m²/nm	[nm]	mW/m²/nm	[nm]	mW/m²/nm	[nm]	mW/m²/nm	[nm]	mW/m²/nm	[nm]	mW/m²/nm	[nm]	mW/m²/nm
380	0.84	535	59.11	690	37.42								
385	0.68	540	60.92	695	33.39								
390	0.65	545	62.61	700	29.77								
395	0.85	550	64.12	705	26.33								
400	0.78	555	65.42	710	23.13								
405	0.83	560	66.85	715	20.20								
410	0.87	565	68.03	720	17.73								
415	1.41	570	69.30	725	15.51								
420	2.29	575	70.35	730	13.57								
425	3.83	580	71.57	735	11.87								
430	6.77	585	72.76	740	10.14								
435	12.00	590	74.29	745	8.74								
440	22.57	595	75.87	750	7.74								
445	42.45	600	77.47	755	6.56								
450	64.74	605	79.13	760	5.63								
455	69.00	610	80.60	765	4.84								
460	56.04	615	81.85	770	4.20								
465	45.00	620	82.74	775	3.86								
470	37.74	625	82.94	780	3.15								
475	30.61	630	82.45										
480	27.69	635	81.34										
485	28.32	640	79.31										
490	30.69	645	76.60										
495	34.13	650	73.09										
500	38.41	655	69.23										
505	42.75	660	64.85										
510	46.63	665	60.12										
515	49.90	670	55.76										
520	52.75	675	51.01										
525	55.15	680	46.25										
530	57.27	685	41.69										

# Measurement Protocol



Manufacturer: Flexfire LEDs, Inc.  
 Type: UltraBright™ Industrial Series LED Strip Light  
 Model: UB-IS-35K90C

Measurement file: UB-IS-35K90C.CSV  
 Date of measurement: 08.05.2023  
 Time of measurement: 12:00:12

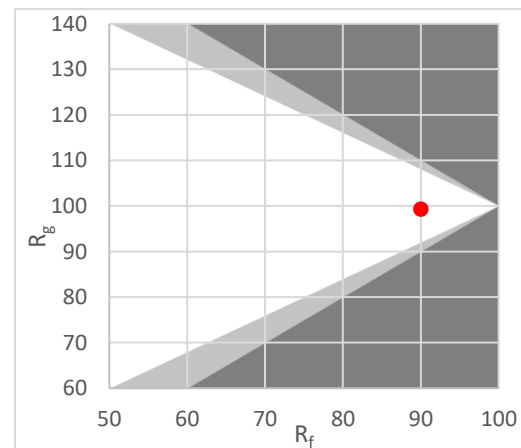
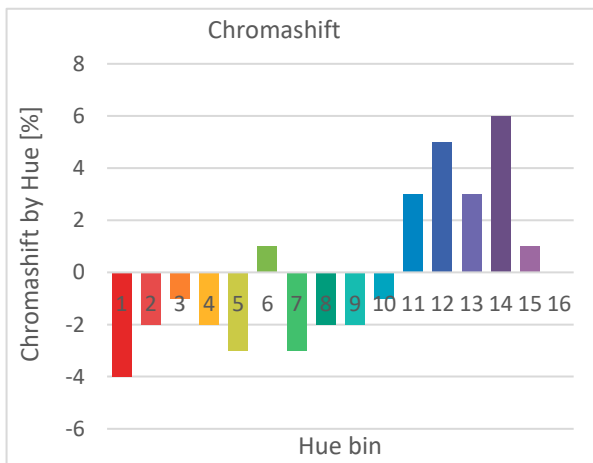
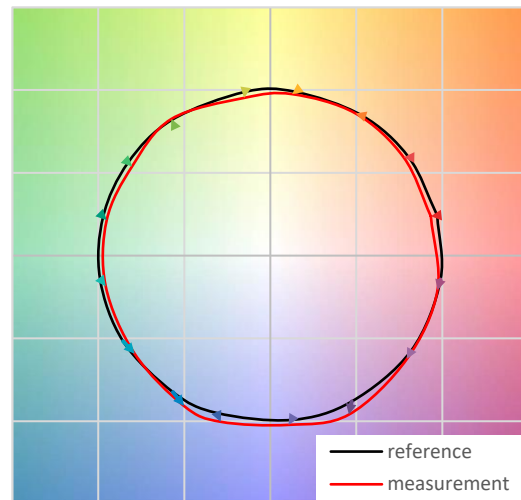
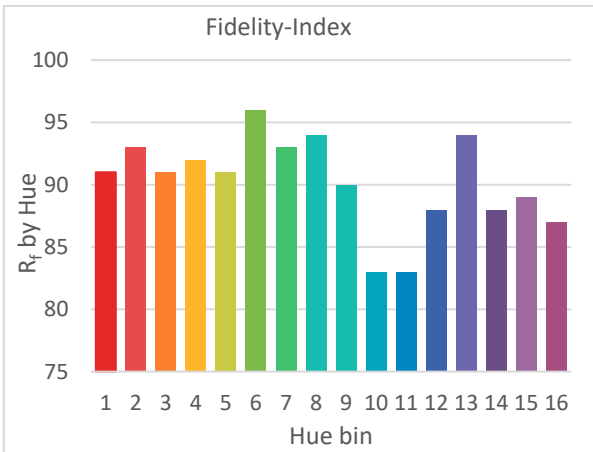
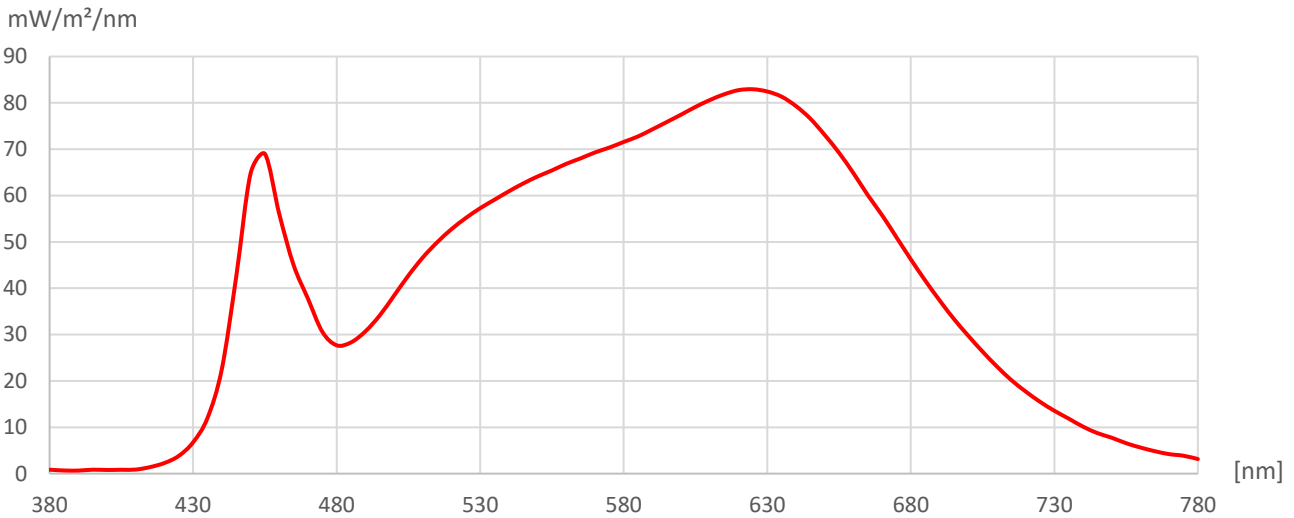


# Measurement Protocol



Manufacturer: Flexfire LEDs, Inc.  
 Type: UltraBright™ Industrial Series LED Strip Light  
 Model: UB-IS-35K90C

Measurement file: UB-IS-35K90C.CSV  
 Date of measurement: 08.05.2023  
 Time of measurement: 12:00:12

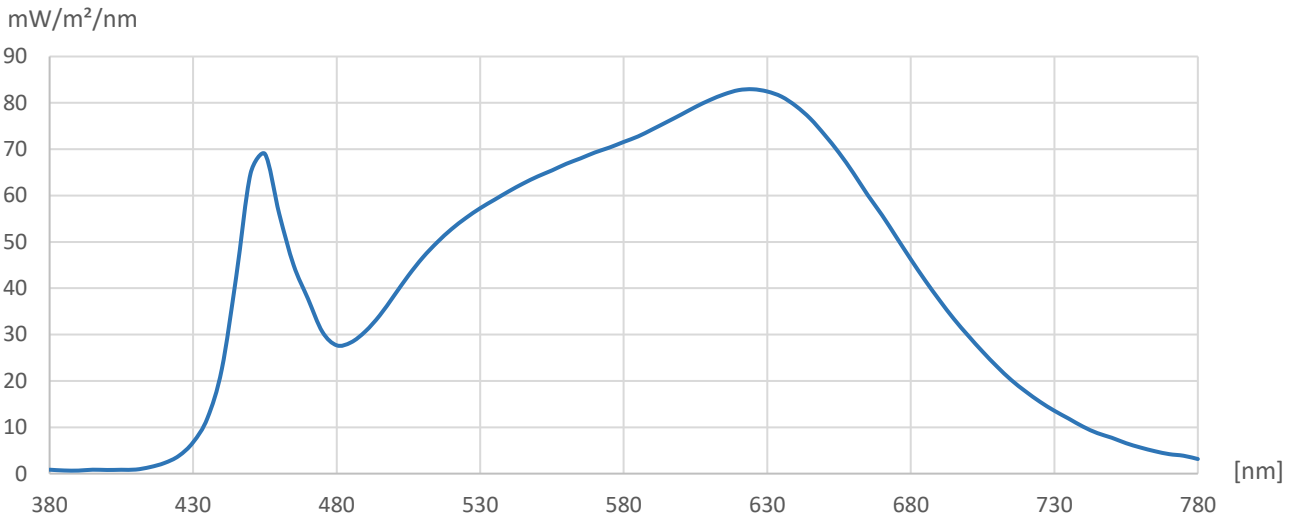


# Measurement Protocol



Manufacturer: Flexfire LEDs, Inc.  
 Type: UltraBright™ Industrial Series LED Strip Light  
 Model: UB-IS-35K90C

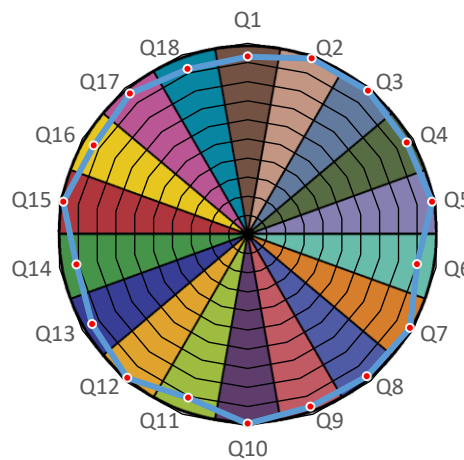
Measurement file: UB-IS-35K90C.CSV  
 Date of measurement: 08.05.2023  
 Time of measurement: 12:00:12



correlated color temperature (CCT) 3,523 K  
 TLCI 95

Reference Spectrum Plank-Daylight Mix

	Lightness	Chroma	Hue
R	1	0	0
R/Y	0	0	-1
Y	0	0	-1
Y/G	0	0	0
G	0	0	0
G/C	0	0	0
C	0	0	0
C/B	0	0	-2
B	0	-1	-1
B/M	1	0	1
M	1	0	1
M/R	1	0	1



Test Colour	Value	Test Colour	Value	Test Colour	Value
Q1 Dark skin	93	Q7 Orange	98	Q13 Blue	94
Q2 Light skin	98	Q8 Purplish blue	97	Q14 Green	91
Q3 Blue sky	98	Q9 Moderate red	96	Q15 Red	98
Q4 Foliage	96	Q10 Purple	99	Q16 Yellow	93
Q5 Blue flower	98	Q11 Yellow green	91	Q17 Magenta	96
Q6 Bluish green	90	Q12 Orange yellow	98	Q18 Cyan	92