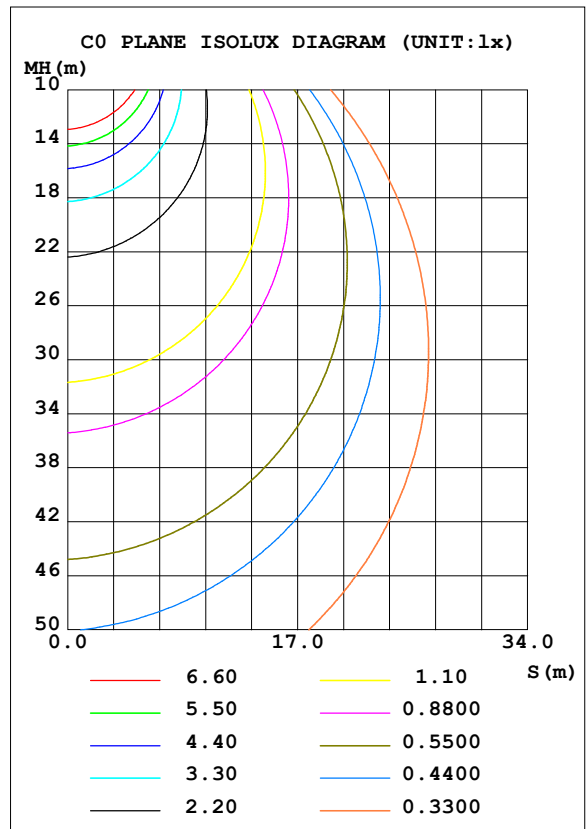
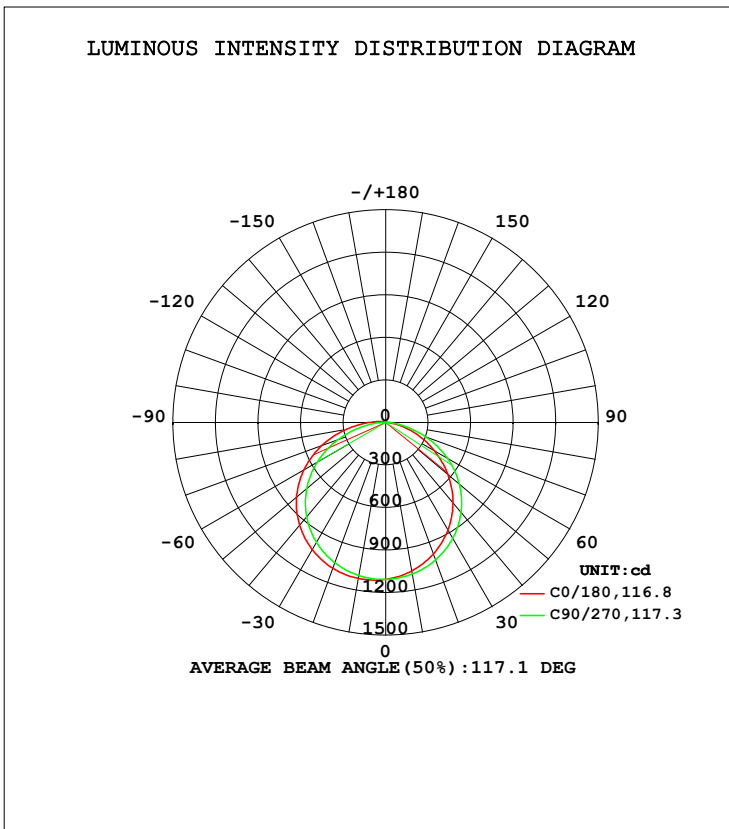


LUMINAIRE PHOTOMETRIC TEST REPORT

Test:U:24.000V I:0.8976A P:21.542W PF:1.0000 Freq:50.00Hz Lamp Flux:3439.63x1 lm		
NAME: UB-IS-30K80C	TYPE:LED Strip	WEIGHT:Kg
SPEC.:21.6W	DIM.: 1000*10*4 (MM)	SERIAL No.:001
MFR.: Flexfire LEDs, Inc.	SUR.:1000*10 (MM)	Shielding Angle:120

DATA OF LAMP		PHOTOMETRIC DATA Eff: 159.67 lm/W			
MODEL	SMD /LED	I _{max} (cd)	1118	S/MH (C0/180)	1.39
NOMINAL POWER (W)	21.5424	LOR (%)	100.0	S/MH (C90/270)	1.31
RATED VOLTAGE (V)	24	TOTAL FLUX (lm)	3439.6	η UP, DN (C0-180)	0.9, 46.7
NOMINAL FLUX (lm)	3439.63	CIE CLASS	DIRECT	η UP, DN (C180-360)	1.0, 51.4
LAMPS INSIDE	1	η up (%)	1.9	CIBSE SHR NOM	1.25
TEST VOLTAGE (V)	24	η down (%)	98.1	CIBSE SHR MAX	1.35



C Range: 0 - 360DEG
 C Interval: 22.5DEG
 Test Speed: HIGH
 Temperature: 25.0DEG
 Test Date: 2020-7-6

γ Range: 0 - 180DEG
 γ Interval: 1.0DEG
 Test System: EVERFINE GO-2000B_V1 SYSTEM V2.00.421
 Humidity: 65.0%
 Test Distance: 7.000m [K=1.0000]
 Remarks:

ZONAL FLUX DIAGRAM

ZONAL FLUX DIAGRAM:

γ	C0	C45	C90	C135	C180	C225	C270	C315	γ	Φ zone	Φ total	%lum, lamp
10	1063	1069	1085	1104	1117	1112	1096	1078	0- 10	104.9	104.9	3.05,3.05
20	986.7	998.2	1031	1068	1094	1082	1053	1016	10- 20	302.1	407.0	11.8,11.8
30	878.1	895.5	944.9	999.6	1037	1020	977.3	922.6	20- 30	463.1	870.1	25.3,25.3
40	739.4	761.7	826.9	899.0	945.7	922.8	868.6	798.2	30- 40	567.0	1437	41.8,41.8
50	574.2	599.1	678.4	765.9	821.5	793.3	728.2	644.0	40- 50	598.9	2036	59.2,59.2
60	394.3	413.3	500.7	602.2	665.4	631.6	556.8	465.4	50- 60	551.8	2588	75.2,75.2
70	220.7	225.7	302.4	413.0	481.0	441.9	360.4	275.9	60- 70	430.9	3019	87.8,87.8
80	71.70	70.39	111.2	214.8	281.4	238.4	158.0	105.1	70- 80	259.5	3278	95.3,95.3
90	4.827	4.707	2.068	69.17	116.3	74.34	12.86	7.806	80- 90	95.28	3374	98.1,98.1
100	4.268	3.689	3.453	20.59	50.04	20.80	2.710	3.213	90-100	24.04	3398	98.8,98.8
110	5.547	5.119	4.964	5.230	17.24	4.995	4.113	4.561	100-110	9.852	3407	99.1,99.1
120	7.030	6.363	6.402	5.787	4.536	4.678	5.537	5.927	110-120	5.713	3413	99.2,99.2
130	8.414	7.946	7.718	7.205	5.827	6.223	6.887	7.233	120-130	5.808	3419	99.4,99.4
140	9.707	9.197	8.922	8.532	7.622	7.908	8.307	8.605	130-140	6.081	3425	99.6,99.6
150	10.99	10.34	10.00	9.762	9.143	9.232	9.396	9.669	140-150	5.797	3431	99.7,99.7
160	11.57	10.89	10.55	10.45	10.10	10.03	10.02	10.24	150-160	4.688	3436	99.9,99.9
170	11.69	11.10	10.82	10.84	10.66	10.62	10.49	10.65	160-170	3.019	3439	100,100
180	10.84	10.79	10.65	10.73	10.84	10.78	10.65	10.73	170-180	1.034	3440	100,100
DEG	LUMINOUS INTENSITY:cd									UNIT:lm		

Conical surface Flux(90deg): 1737.5 lm

%lum = 50.5%
 %lamp = 50.5%

Conical surface Flux(120deg): 2587.9 lm

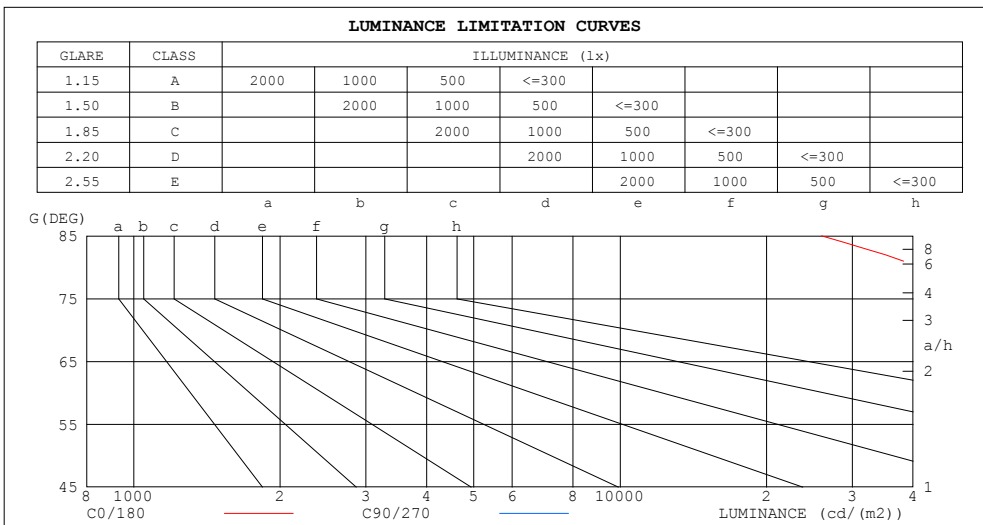
%lum = 75.2%
 %lamp = 75.2%

C Range: 0 - 360DEG
 C Interval: 22.5DEG
 Test Speed: HIGH
 Temperature:25.0DEG
 Test Date:2020-7-6

γ Range: 0 - 180DEG
 γ Interval: 1.0DEG
 Test System:EVERFINE GO-2000B_V1 SYSTEM V2.00.421
 Humidity:65.0%
 Test Distance:7.000m [K=1.0000]
 Remarks:

LUMINANCE LIMITATION CURVES

Test:U:24.000V I:0.8976A P:21.542W PF:1.0000 Freq:50.00Hz Lamp Flux:3439.63x1 lm		
NAME: UB-IS-30K80C	TYPE:LED Strip	WEIGHT:Kg
SPEC.:21.6W	DIM.: 1000*10*4 (MM)	SERIAL No.:001
MFR.: Flexfire LEDs, Inc.	SUR.:1000*10 (MM)	Shielding Angle:120



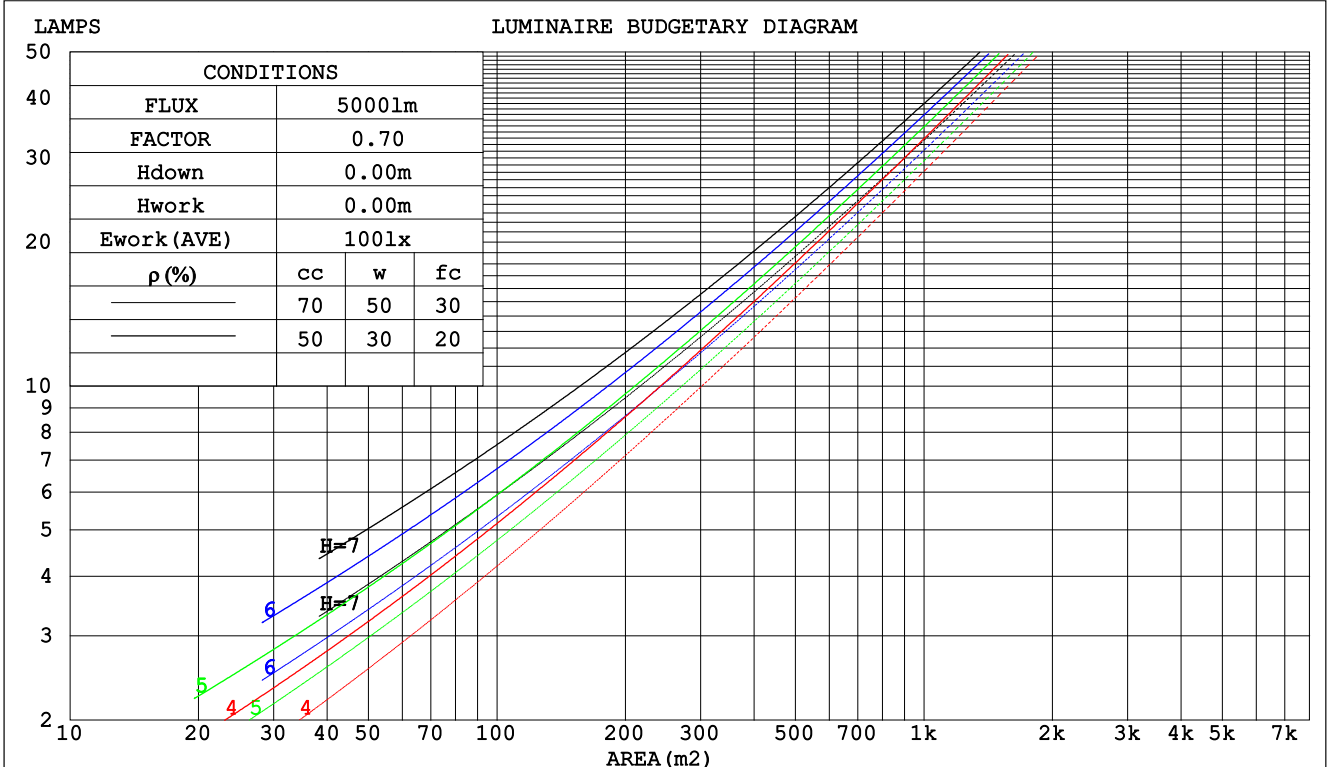
C Range: 0 - 360DEG
 C Interval: 22.5DEG
 Test Speed: HIGH
 Temperature:25.0DEG
 Test Date:2020-7-6

γ Range: 0 - 180DEG
 γ Interval: 1.0DEG
 Test System:EVERFINE GO-2000B_V1 SYSTEM V2.00.421
 Humidity:65.0%
 Test Distance:7.000m [K=1.0000]
 Remarks:

CU AND LUMINAIRE BUDGETARY ESTIMATE DIAGRAM

Test:U:24.000V I:0.8976A P:21.542W PF:1.0000 Freq:50.00Hz Lamp Flux:3439.63x1 lm		
NAME: UB-IS-30K80C	TYPE:LED Strip	WEIGHT:Kg
SPEC.:21.6W	DIM.: 1000*10*4 (MM)	SERIAL No.:001
MFR.: Flexfire LEDs, Inc.	SUR.:1000*10 (MM)	Shielding Angle:120

ρcc	80%			70%			50%			30%			10%			0
ρw	50%	30%	10%	50%	30%	10%	50%	30%	10%	50%	30%	10%	50%	30%	10%	0
ρfc	20%			20%			20%			20%			20%			0
RCR	RCR:Room Cavity Ratio															
	Coefficients of Utilization(CU)															
0.0	1.19	1.19	1.19	1.16	1.16	1.16	1.10	1.10	1.10	1.05	1.05	1.05	1.00	1.00	1.00	.98
1.0	1.03	.98	.94	1.00	.96	.92	.96	.92	.89	.91	.89	.86	.87	.85	.83	.81
2.0	.89	.82	.76	.87	.80	.75	.83	.78	.73	.80	.75	.71	.76	.72	.69	.67
3.0	.78	.70	.63	.76	.68	.62	.73	.66	.61	.70	.64	.59	.67	.62	.58	.56
4.0	.69	.60	.53	.67	.59	.52	.65	.57	.52	.62	.56	.51	.60	.54	.50	.47
5.0	.61	.52	.45	.60	.51	.45	.58	.50	.44	.56	.49	.44	.53	.48	.43	.41
6.0	.55	.46	.39	.54	.45	.39	.52	.44	.39	.50	.43	.38	.48	.42	.38	.36
7.0	.50	.41	.35	.49	.41	.35	.47	.40	.34	.46	.39	.34	.44	.38	.33	.31
8.0	.45	.37	.31	.45	.36	.31	.43	.36	.30	.42	.35	.30	.40	.34	.30	.28
9.0	.42	.33	.28	.41	.33	.28	.40	.32	.27	.38	.32	.27	.37	.31	.27	.25
10.0	.38	.30	.25	.38	.30	.25	.37	.30	.25	.36	.29	.25	.35	.29	.24	.23



C Range: 0 - 360DEG
 C Interval: 22.5DEG
 Test Speed: HIGH
 Temperature:25.0DEG
 Test Date:2020-7-6

γ Range: 0 - 180DEG
 γ Interval: 1.0DEG
 Test System:EVERFINE GO-2000B_V1 SYSTEM V2.00.421
 Humidity:65.0%
 Test Distance:7.000m [K=1.0000]
 Remarks:

WEC AND CCEC

Test:U:24.000V I:0.8976A P:21.542W PF:1.0000 Freq:50.00Hz Lamp Flux:3439.63x1 lm		
NAME: UB-IS-30K80C	TYPE:LED Strip	WEIGHT:Kg
SPEC.:21.6W	DIM.: 1000*10*4 (MM)	SERIAL No.:001
MFR.: Flexfire LEDs, Inc.	SUR.:1000*10 (MM)	Shielding Angle:120

pcc	80%			70%			50%			30%			10%			0
pw	50%	30%	10%	50%	30%	10%	50%	30%	10%	50%	30%	10%	50%	30%	10%	0
pfc	20%			20%			20%			20%			20%			0
RCR	RCR:Room Cavity Ratio						Wall Exitance Coefficients(WEC)									
0.0																
1.0	.324	.184	.058	.316	.180	.057	.302	.173	.055	.288	.166	.053	.276	.160	.052	
2.0	.300	.165	.051	.294	.162	.050	.281	.156	.049	.269	.151	.047	.258	.146	.046	
3.0	.276	.147	.044	.270	.145	.044	.259	.140	.043	.248	.136	.042	.238	.132	.041	
4.0	.254	.132	.039	.248	.130	.038	.238	.126	.038	.229	.123	.037	.220	.120	.036	
5.0	.234	.119	.035	.229	.118	.034	.220	.115	.034	.212	.112	.033	.204	.109	.033	
6.0	.216	.108	.031	.212	.107	.031	.204	.105	.030	.197	.102	.030	.189	.100	.030	
7.0	.201	.099	.028	.197	.098	.028	.190	.096	.028	.183	.094	.027	.177	.092	.027	
8.0	.188	.092	.026	.184	.091	.026	.178	.089	.025	.171	.087	.025	.166	.085	.025	
9.0	.176	.085	.024	.172	.084	.024	.167	.082	.023	.161	.081	.023	.156	.079	.023	
10.0	.165	.079	.022	.162	.078	.022	.157	.077	.022	.152	.075	.021	.147	.074	.021	

pcc	80%			70%			50%			30%			10%			0
pw	50%	30%	10%	50%	30%	10%	50%	30%	10%	50%	30%	10%	50%	30%	10%	0
pfc	20%			20%			20%			20%			20%			0
RCR	RCR:Room Cavity Ratio						Ceiling Cavity Exitance Coefficients(CCEC)									
0.0	.205	.205	.205	.175	.175	.175	.120	.120	.120	.069	.069	.069	.022	.022	.022	
1.0	.196	.171	.148	.168	.147	.127	.115	.101	.088	.066	.058	.051	.021	.019	.017	
2.0	.188	.147	.112	.161	.126	.097	.110	.087	.067	.064	.051	.040	.020	.016	.013	
3.0	.181	.129	.088	.155	.112	.077	.106	.077	.054	.061	.045	.032	.020	.015	.010	
4.0	.173	.116	.073	.148	.100	.063	.102	.070	.044	.059	.041	.026	.019	.013	.009	
5.0	.166	.106	.062	.142	.092	.054	.098	.064	.038	.057	.038	.022	.018	.012	.007	
6.0	.158	.097	.054	.136	.084	.047	.094	.059	.033	.054	.035	.020	.018	.011	.007	
7.0	.151	.091	.048	.130	.079	.042	.090	.055	.030	.052	.032	.018	.017	.011	.006	
8.0	.145	.085	.044	.125	.074	.038	.086	.052	.027	.050	.030	.016	.016	.010	.005	
9.0	.139	.080	.040	.120	.069	.035	.083	.049	.025	.048	.029	.015	.016	.009	.005	
10.0	.133	.076	.037	.115	.066	.033	.080	.046	.023	.046	.027	.014	.015	.009	.005	

C Range: 0 - 360DEG
 C Interval: 22.5DEG
 Test Speed: HIGH
 Temperature:25.0DEG
 Test Date:2020-7-6

γ Range: 0 - 180DEG
 γ Interval: 1.0DEG
 Test System:EVERFINE GO-2000B_V1 SYSTEM V2.00.421
 Humidity:65.0%
 Test Distance:7.000m [K=1.0000]
 Remarks:

UGR(Unified Glare Rating) Table

Test:U:24.000V I:0.8976A P:21.542W PF:1.0000 Freq:50.00Hz Lamp Flux:3439.63x1 lm										
NAME: UB-IS-30K80C					TYPE:LED Strip			WEIGHT:Kg		
SPEC.:21.6W					DIM.: 1000*10*4(MM)			SERIAL No.:001		
MFR.: Flexfire LEDs, Inc.					SUR.:1000*10(MM)			Shielding Angle:120		
ceiling/cavity	0.7	0.7	0.5	0.5	0.3	0.7	0.7	0.5	0.5	0.3
walls	0.5	0.3	0.5	0.3	0.3	0.5	0.3	0.5	0.3	0.3
working plane	0.2	0.2	0.2	0.2	0.2	0.2	0.2	0.2	0.2	0.2
Room dimensions	Viewed crosswise					Viewed endwise				
x = 2H y = 2H	27.4	28.9	27.7	29.2	29.4	28.3	29.8	28.6	30.1	30.3
3H	28.6	30.0	28.9	30.3	30.5	29.7	31.1	30.1	31.4	31.7
4H	29.0	30.3	29.3	30.6	30.9	30.3	31.6	30.6	31.9	32.2
6H	29.2	30.4	29.5	30.7	31.1	30.6	31.8	30.9	32.2	32.5
8H	29.2	30.4	29.6	30.7	31.1	30.7	31.9	31.0	32.2	32.5
12H	29.2	30.4	29.6	30.7	31.0	30.7	31.9	31.1	32.2	32.5
4H 2H	28.0	29.3	28.3	29.6	29.9	28.7	30.0	29.0	30.3	30.6
3H	29.3	30.5	29.7	30.8	31.1	30.2	31.4	30.6	31.8	32.1
4H	29.8	30.8	30.2	31.2	31.6	30.9	31.9	31.3	32.3	32.7
6H	30.1	31.0	30.5	31.4	31.8	31.3	32.2	31.7	32.6	33.0
8H	30.1	31.0	30.6	31.4	31.8	31.4	32.3	31.8	32.7	33.1
12H	30.1	30.9	30.6	31.4	31.8	31.5	32.3	31.9	32.7	33.1
8H 4H	29.9	30.8	30.4	31.2	31.7	30.9	31.8	31.4	32.2	32.7
6H	30.3	31.1	30.8	31.5	32.0	31.4	32.2	31.9	32.6	33.1
8H	30.4	31.1	30.9	31.5	32.0	31.6	32.2	32.1	32.7	33.2
12H	30.5	31.0	31.0	31.5	32.0	31.7	32.3	32.2	32.8	33.3
12H 4H	29.9	30.7	30.4	31.2	31.6	30.9	31.7	31.4	32.2	32.6
6H	30.3	31.0	30.8	31.4	31.9	31.4	32.1	31.9	32.5	33.0
8H	30.5	31.0	31.0	31.5	32.0	31.6	32.2	32.1	32.7	33.2
Variations with the observer position at spacings:										
S = 1.0H	+ 0.2 / - 0.3					+ 0.2 / - 0.2				
1.5H	+ 0.2 / - 0.4					+ 0.2 / - 0.2				
2.0H	+ 0.3 / - 0.4					+ 0.4 / - 0.5				

CIE Pub.117, 3440 lm Total Lamp Luminous Flux Corrected (8log(F/F0) = 4.3)
 Area: 0.01 m2

C Range: 0 - 360DEG
 C Interval: 22.5DEG
 Test Speed: HIGH
 Temperature:25.0DEG
 Test Date:2020-7-6

γ Range: 0 - 180DEG
 γ Interval: 1.0DEG
 Test System:EVERFINE GO-2000B_V1 SYSTEM V2.00.421
 Humidity:65.0%
 Test Distance:7.000m [K=1.0000]
 Remarks:

UTILIZATION FACTORS TABLE

Test:U:24.000V I:0.8976A P:21.542W PF:1.0000 Freq:50.00Hz Lamp Flux:3439.63x1 lm		
NAME: UB-IS-30K80C	TYPE:LED Strip	WEIGHT:Kg
SPEC.:21.6W	DIM.: 1000*10*4 (MM)	SERIAL No.:001
MFR.: Flexfire LEDs, Inc.	SUR.:1000*10 (MM)	Shielding Angle:120

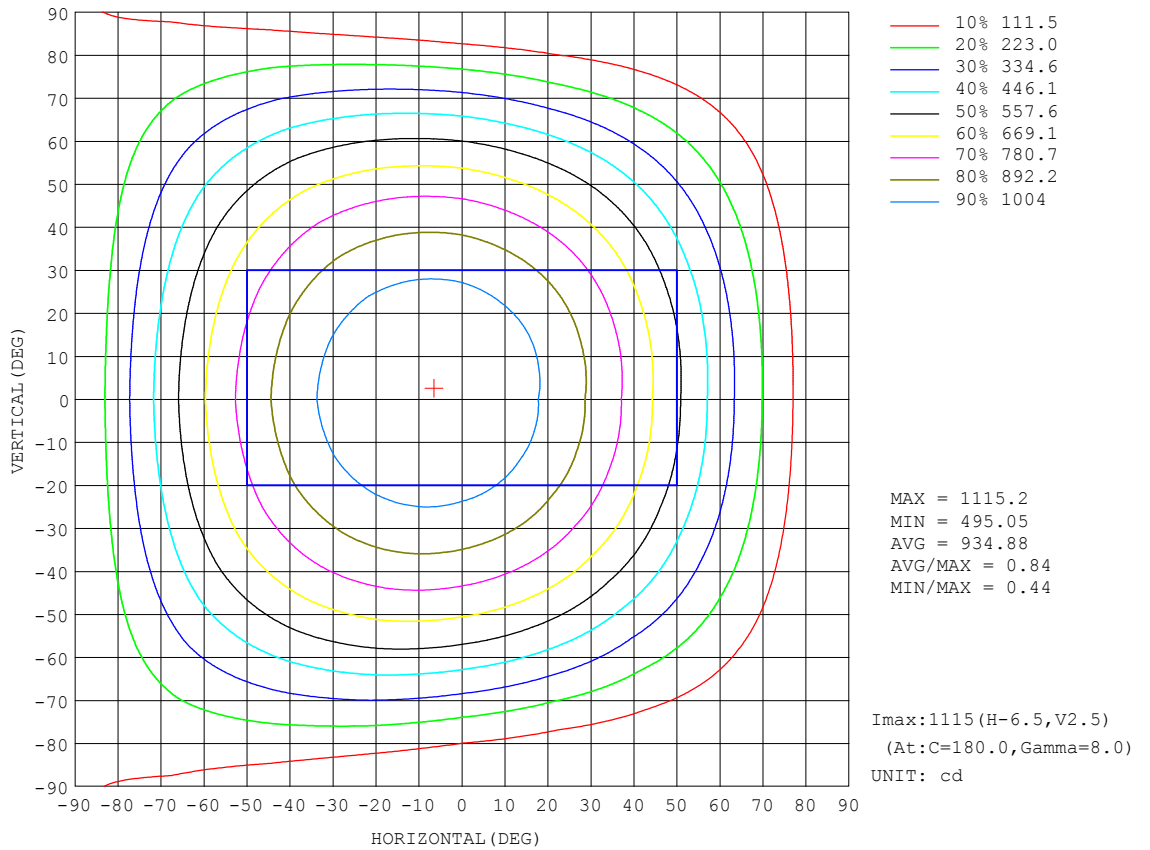
REFLECTANCE										
Ceiling	0.8	0.8	0.8	0.7	0.7	0.7	0.5	0.5	0.5	0
Walls	0.7	0.5	0.3	0.7	0.5	0.3	0.7	0.5	0.3	0
Working plane	0.2	0.2	0.2	0.2	0.2	0.2	0.2	0.2	0.2	0
ROOM INDEX	UTILIZATION FACTORS (PERCENT) $k(RI) \times RCR = 5$									
k = 0.60	56	44	37	55	44	37	54	43	37	30
0.80	66	54	46	65	53	46	63	53	46	39
1.00	74	63	55	73	62	55	70	63	54	47
1.25	81	70	63	80	70	63	77	68	62	54
1.50	86	76	69	85	75	68	81	73	67	59
2.00	93	84	78	91	83	77	88	81	75	67
2.50	97	89	83	95	88	82	91	85	80	71
3.00	101	94	88	98	92	87	94	89	84	75
4.00	105	99	94	102	97	92	98	93	90	80
5.00	107	102	98	105	100	96	100	96	93	83
ROOM INDEX	UF(total)									Direct
According to DIN EN 13032-2 2004			Suspended				SHRNOM = 1.25			

C Range: 0 - 360DEG
 C Interval: 22.5DEG
 Test Speed: HIGH
 Temperature:25.0DEG
 Test Date:2020-7-6

γ Range: 0 - 180DEG
 γ Interval: 1.0DEG
 Test System:EVERFINE GO-2000B_V1 SYSTEM V2.00.421
 Humidity:65.0%
 Test Distance:7.000m [K=1.0000]
 Remarks:

ISOCANDELA DIAGRAM

Test:U:24.000V I:0.8976A P:21.542W PF:1.0000 Freq:50.00Hz Lamp Flux:3439.63x1 lm		
NAME: UB-IS-30K80C	TYPE:LED Strip	WEIGHT:Kg
SPEC.:21.6W	DIM.: 1000*10*4 (MM)	SERIAL No.:001
MFR.: Flexfire LEDs, Inc.	SUR.:1000*10 (MM)	Shielding Angle:120

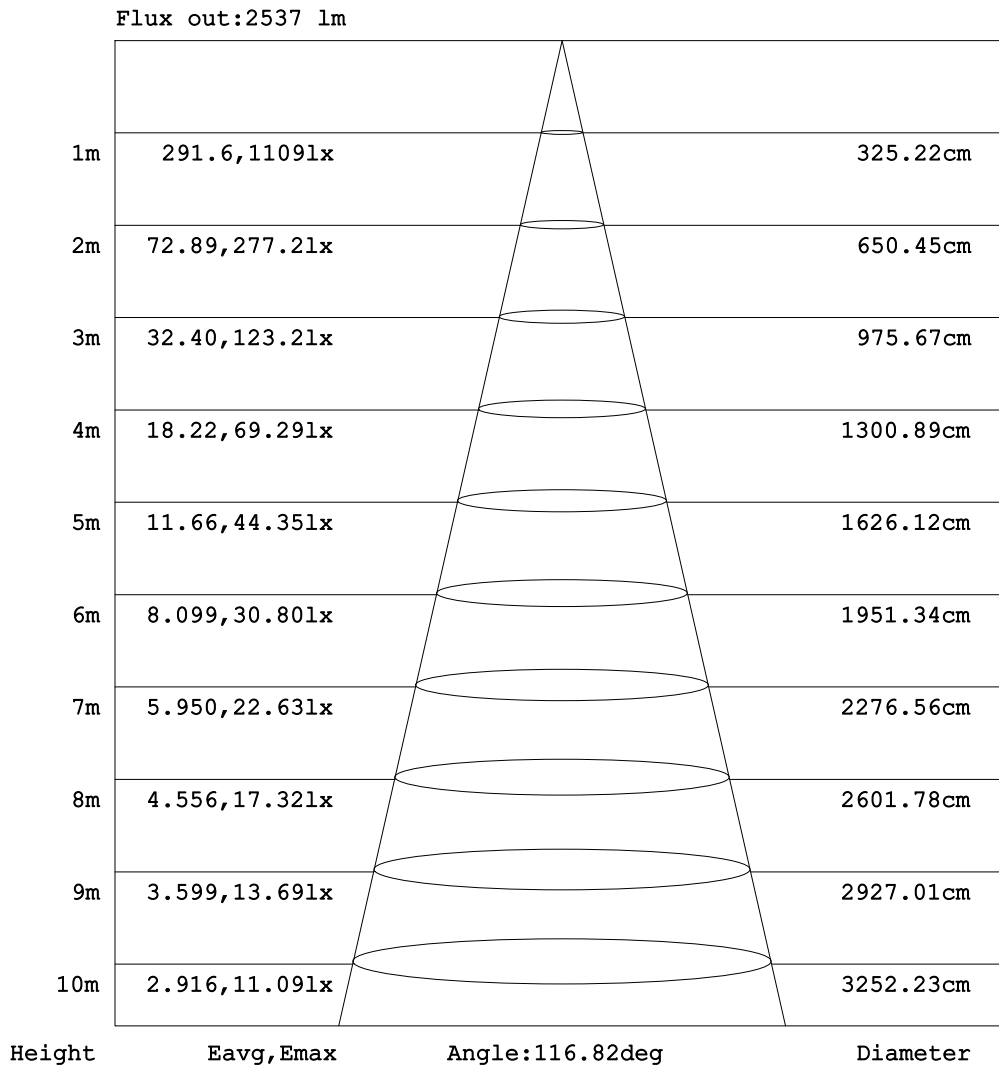


C Range: 0 - 360DEG
 C Interval: 22.5DEG
 Test Speed: HIGH
 Temperature:25.0DEG
 Test Date:2020-7-6

γ Range: 0 - 180DEG
 γ Interval: 1.0DEG
 Test System:EVERFINE GO-2000B_V1 SYSTEM V2.00.421
 Humidity:65.0%
 Test Distance:7.000m [K=1.0000]
 Remarks:

AAI Figure

Test:U:24.000V I:0.8976A P:21.542W PF:1.0000 Freq:50.00Hz Lamp Flux:3439.63x1 lm		
NAME: UB-IS-30K80C	TYPE:LED Strip	WEIGHT:Kg
SPEC.:21.6W	DIM.: 1000*10*4 (MM)	SERIAL No.:001
MFR.: Flexfire LEDs, Inc.	SUR.:1000*10 (MM)	Shielding Angle:120



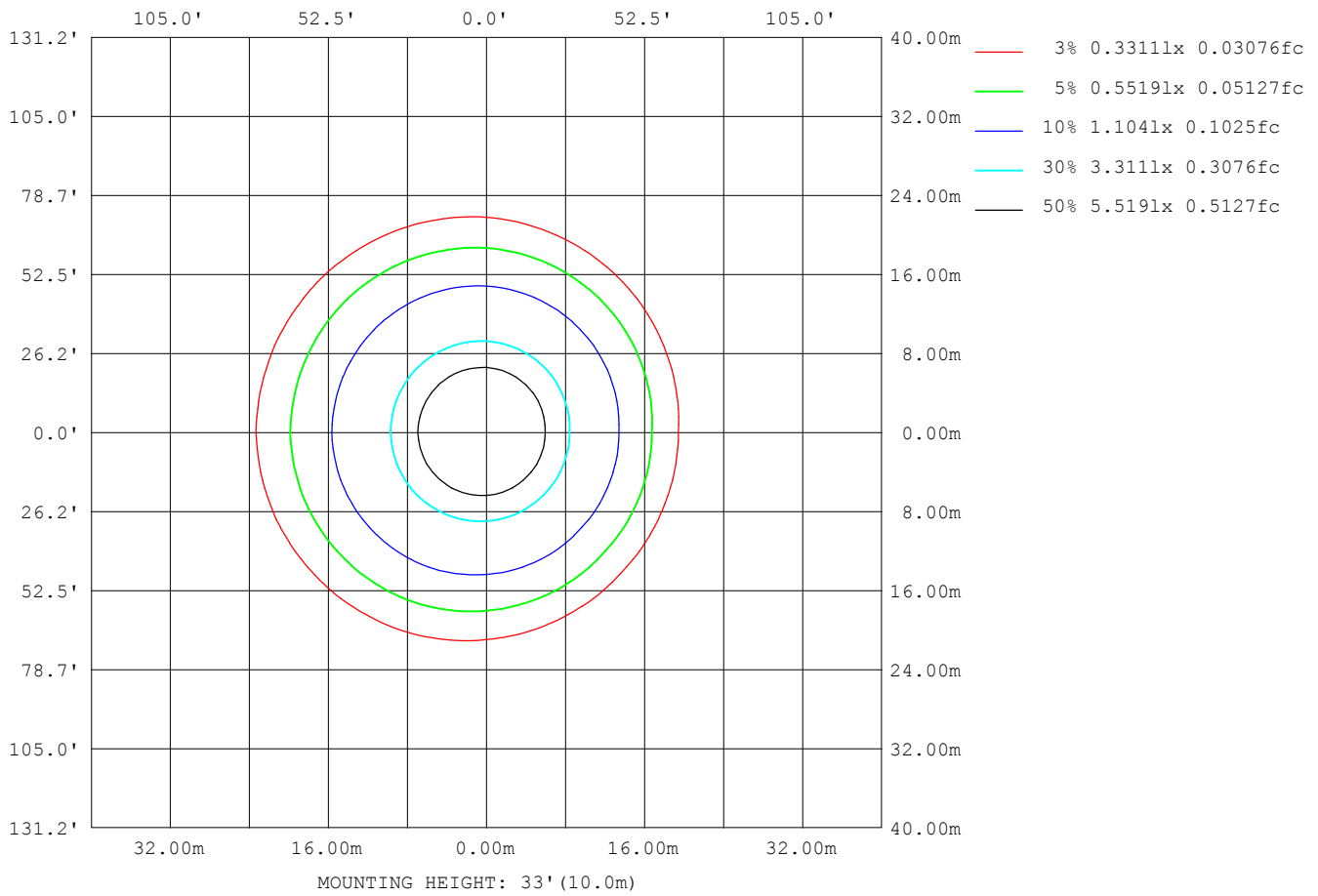
Note: The Curves indicate the illuminated area and the average illumination when the luminaire is at different distance.

C Range: 0 - 360DEG
 C Interval: 22.5DEG
 Test Speed: HIGH
 Temperature:25.0DEG
 Test Date:2020-7-6

γ Range: 0 - 180DEG
 γ Interval: 1.0DEG
 Test System:EVERFINE GO-2000B_V1 SYSTEM V2.00.421
 Humidity:65.0%
 Test Distance:7.000m [K=1.0000]
 Remarks:

ISOLUX DIAGRAM

Test:U:24.000V I:0.8976A P:21.542W PF:1.0000 Freq:50.00Hz Lamp Flux:3439.63x1 lm		
NAME: UB-IS-30K80C	TYPE:LED Strip	WEIGHT:Kg
SPEC.:21.6W	DIM.: 1000*10*4 (MM)	SERIAL No.:001
MFR.: Flexfire LEDs, Inc.	SUR.:1000*10 (MM)	Shielding Angle:120



C Range: 0 - 360DEG
 C Interval: 22.5DEG
 Test Speed: HIGH
 Temperature:25.0DEG
 Test Date:2020-7-6

γ Range: 0 - 180DEG
 γ Interval: 1.0DEG
 Test System:EVERFINE GO-2000B_V1 SYSTEM V2.00.421
 Humidity:65.0%
 Test Distance:7.000m [K=1.0000]
 Remarks:

LED Avg.L Report

Test:U:24.000V I:0.8976A P:21.542W PF:1.0000 Freq:50.00Hz Lamp Flux:3439.63x1 lm		
NAME: UB-IS-30K80C	TYPE:LED Strip	WEIGHT:Kg
SPEC.:21.6W	DIM.: 1000*10*4 (MM)	SERIAL No.:001
MFR.: Flexfire LEDs, Inc.	SUR.:1000*10 (MM)	Shielding Angle:120

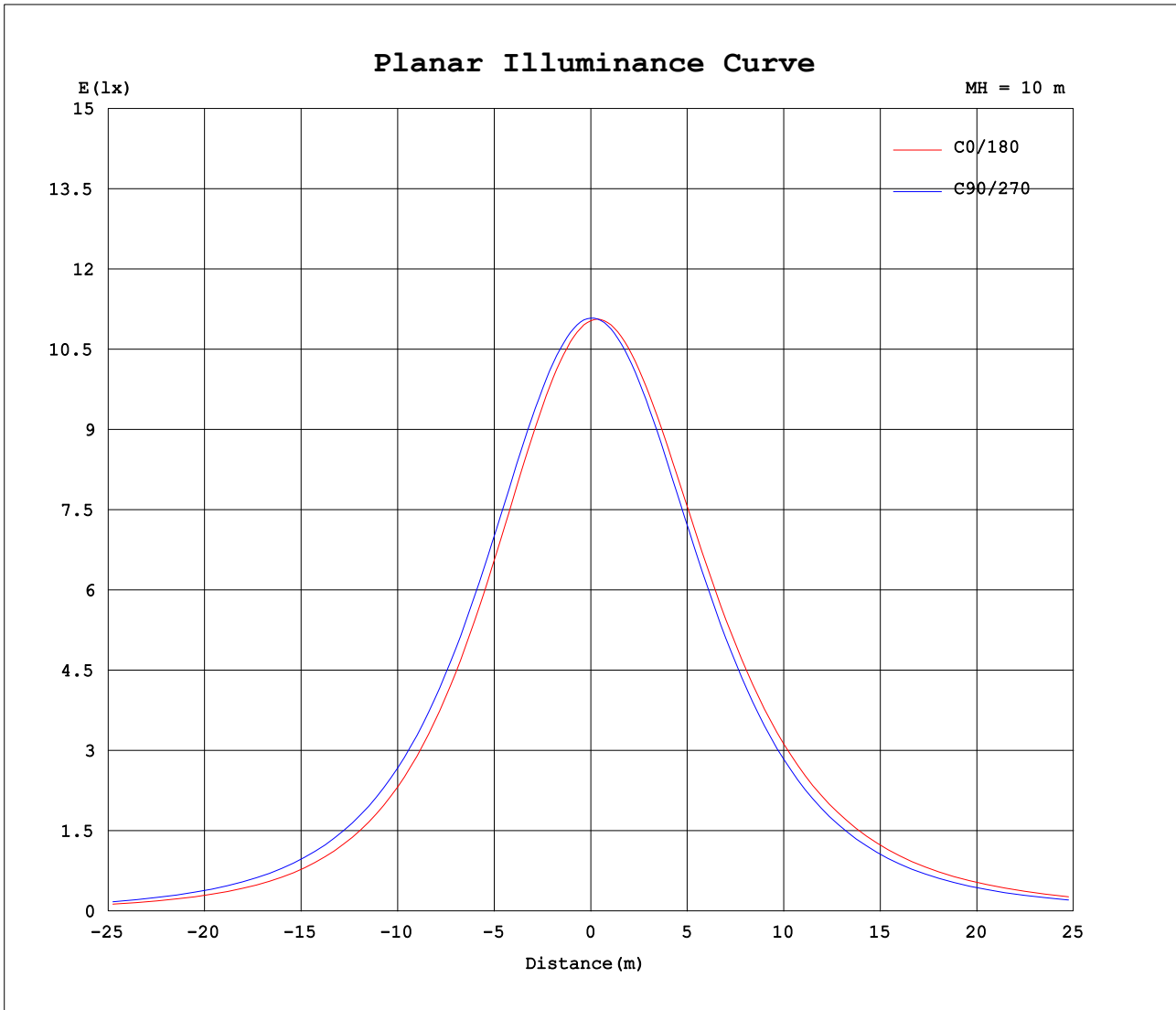
AvgL	cd/m2
L_0~180 (65) av	104483
L_0~180 (75) av	100854
L_0~180 (85) av	120703
L_90~270 (65) av	102286
L_90~270 (75) av	88996
L_90~270 (85) av	66663
L_45 (65) av	102802
L_45 (75) av	94614
L_45 (85) av	96877

Standard: GB/T 29293-2012

C Range: 0 - 360DEG
 C Interval: 22.5DEG
 Test Speed: HIGH
 Temperature:25.0DEG
 Test Date:2020-7-6

γ Range: 0 - 180DEG
 γ Interval: 1.0DEG
 Test System:EVERFINE GO-2000B_V1 SYSTEM V2.00.421
 Humidity:65.0%
 Test Distance:7.000m [K=1.0000]
 Remarks:

Planar Illuminance Curve



C Range: 0 - 360DEG
 C Interval: 22.5DEG
 Test Speed: HIGH
 Temperature:25.0DEG
 Test Date:2020-7-6

γ Range: 0 - 180DEG
 γ Interval: 1.0DEG
 Test System:EVERFINE GO-2000B_V1 SYSTEM V2.00.421
 Humidity:65.0%
 Test Distance:7.000m [K=1.0000]
 Remarks:

LUMINOUS DISTRIBUTION INTENSITY DATA

Test:U:24.000V I:0.8976A P:21.542W PF:1.0000 Freq:50.00Hz Lamp Flux:3439.63x1 lm		
NAME: UB-IS-30K80C	TYPE:LED Strip	WEIGHT:Kg
SPEC.:21.6W	DIM.: 1000*10*4 (MM)	SERIAL No.:001
MFR.: Flexfire LEDs, Inc.	SUR.:1000*10 (MM)	Shielding Angle:120

Table--1

UNIT: cd

C (DEG) \ γ (DEG)	0	22.5	45	67.5	90	112.5	135	157.5	180	202.5	225	247.5	270	292.5	315	337.5			
0	1107	1107	1107	1107	1107	1107	1107	1107	1107	1107	1107	1107	1107	1107	1107	1107			
5	1089	1090	1092	1096	1100	1105	1110	1113	1116	1115	1114	1110	1106	1101	1096	1092			
10	1063	1065	1069	1077	1085	1095	1104	1112	1117	1116	1112	1104	1096	1086	1078	1069			
15	1029	1031	1038	1050	1062	1077	1090	1102	1110	1107	1101	1090	1079	1064	1051	1038			
20	987	990	998	1014	1031	1051	1068	1083	1094	1091	1082	1069	1053	1034	1016	998			
25	936	940	950	971	992	1017	1038	1057	1069	1065	1055	1038	1019	996	973	952			
30	878	883	896	920	945	975	1000	1023	1037	1032	1020	1000	977	949	923	896			
35	813	818	833	860	890	925	954	979	995	989	976	953	927	895	864	833			
40	739	744	762	792	827	866	899	927	946	939	923	897	869	833	798	764			
45	660	665	684	718	757	800	836	868	888	879	862	834	802	762	725	687			
50	574	580	599	637	678	726	766	800	822	813	793	763	728	686	644	604			
55	484	489	508	548	593	645	687	725	747	737	717	683	646	601	557	516			
60	394	396	413	453	501	556	602	642	665	654	632	596	557	509	465	424			
65	306	306	318	355	403	462	510	552	577	564	540	502	461	413	370	334			
70	221	219	226	256	302	363	413	456	481	467	442	402	360	313	276	246			
75	141	138	142	160	203	261	313	357	381	366	340	299	258	215	185	162			
80	71.7	69.7	70.4	80.9	111	164	215	258	281	265	238	197	158	124	105	87.2			
85	22.7	21.4	22.0	26.4	42.8	83.1	129	168	188	172	144	107	73.4	52.2	42.1	30.6			
90	4.83	4.61	4.71	5.18	2.07	32.3	69.2	101	116	100	74.3	41.8	12.9	11.3	7.81	5.23			
95	3.91	3.67	3.38	2.93	2.70	11.7	38.8	64.6	74.4	60.9	37.9	13.7	2.08	2.84	3.17	3.37			
100	4.27	3.92	3.69	3.58	3.45	4.73	20.6	41.6	50.0	39.0	20.8	5.41	2.71	3.05	3.21	3.46			
105	4.83	4.56	4.41	4.33	4.22	3.94	9.92	24.4	31.1	23.3	10.4	3.09	3.40	3.72	3.88	3.95			
110	5.55	5.25	5.12	5.04	4.96	4.69	5.23	12.9	17.2	12.1	5.00	3.65	4.11	4.40	4.56	4.58			
115	6.28	5.99	5.78	5.76	5.69	5.42	5.07	6.41	8.04	5.62	3.93	4.40	4.83	5.09	5.24	5.22			
120	7.03	6.74	6.36	6.47	6.40	6.15	5.79	5.48	4.54	4.42	4.68	5.15	5.54	5.77	5.93	6.06			
125	7.73	7.45	7.27	7.15	7.08	6.83	6.50	6.20	5.08	5.14	5.45	5.88	6.23	6.44	6.60	6.87			
130	8.41	8.13	7.95	7.80	7.72	7.49	7.20	6.95	5.83	5.89	6.22	6.59	6.89	7.05	7.23	7.53			
135	9.02	8.72	8.52	8.38	8.31	8.09	7.83	7.65	6.67	6.73	7.03	7.35	7.59	7.74	7.91	8.26			
140	9.71	9.39	9.20	9.01	8.92	8.72	8.53	8.40	7.62	7.65	7.91	8.12	8.31	8.42	8.60	9.01			
145	10.4	10.1	9.88	9.65	9.55	9.37	9.22	9.20	8.47	8.44	8.66	8.80	8.93	9.01	9.22	9.67			
150	11.0	10.6	10.3	10.1	10.0	9.86	9.76	9.80	9.14	9.01	9.23	9.31	9.40	9.47	9.67	10.1			
155	11.4	10.9	10.7	10.4	10.3	10.2	10.1	10.2	9.66	9.37	9.65	9.68	9.72	9.77	9.97	10.4			
160	11.6	11.0	10.9	10.7	10.5	10.5	10.4	10.5	10.1	9.84	10.0	10.0	10.0	10.1	10.2	10.7			
165	11.7	11.2	11.1	10.9	10.7	10.7	10.7	11.0	10.4	10.2	10.3	10.3	10.3	10.3	10.5	10.9			
170	11.7	11.2	11.1	10.9	10.8	10.8	10.8	11.1	10.7	10.5	10.6	10.5	10.5	10.5	10.6	11.0			
175	11.3	11.0	11.0	10.9	10.8	10.8	10.9	11.1	10.6	10.5	10.7	10.6	10.5	10.6	10.6	10.9			
180	10.8	10.6	10.8	10.7	10.7	10.6	10.7	10.9	10.8	10.6	10.8	10.7	10.7	10.7	10.7	10.9			

C Range: 0 - 360DEG
 C Interval: 22.5DEG
 Test Speed: HIGH
 Temperature:25.0DEG
 Test Date:2020-7-6

γ Range: 0 - 180DEG
 γ Interval: 1.0DEG
 Test System:EVERFINE GO-2000B_V1 SYSTEM V2.00.421
 Humidity:65.0%
 Test Distance:7.000m [K=1.0000]
 Remarks: