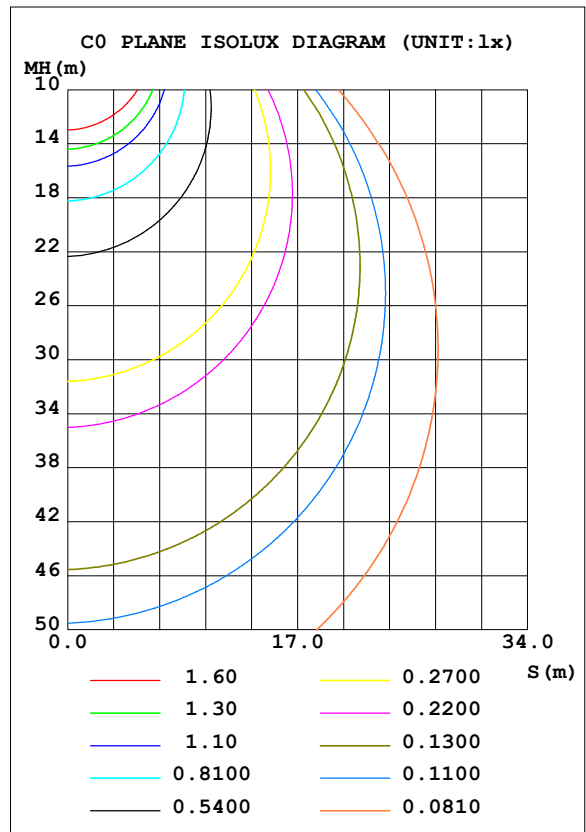
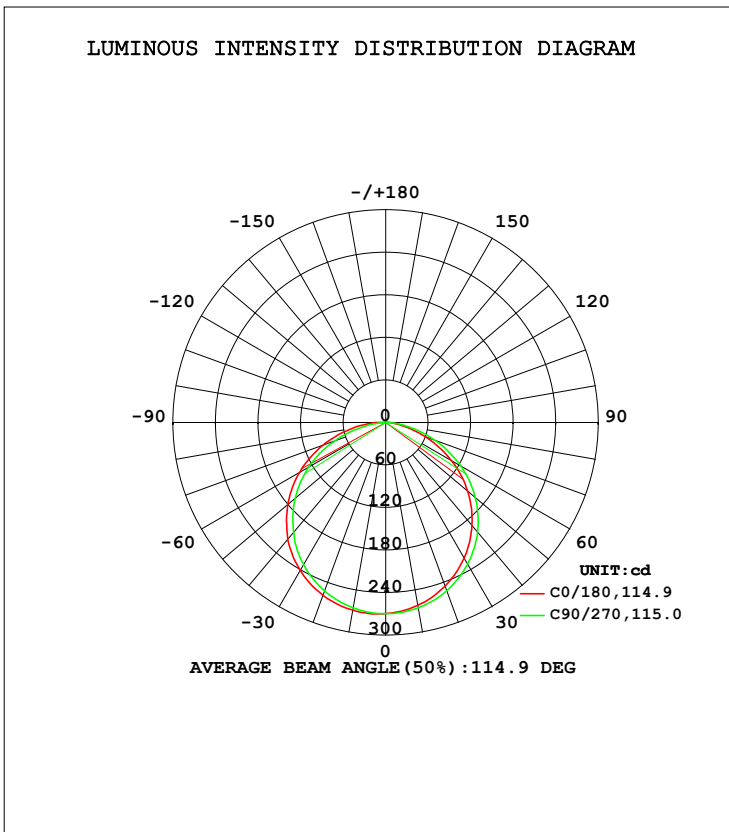


**LUMINAIRE PHOTOMETRIC TEST REPORT**

Test:U:24.000V I:0.3108A P:7.4592W PF:1.0000 Freq:50.00Hz Lamp Flux:803.604x1 lm		
NAME: UB-AS-DYN276290C	TYPE:LED Strip	WEIGHT:Kg
SPEC.:7.8W	DIM.: 1000*10*4 (MM)	SERIAL No.:001
MFR.: Flexfire LEDs, Inc.	SUR.:1000*10 (MM)	Shielding Angle:120

DATA OF LAMP		PHOTOMETRIC DATA Eff: 107.73 lm/W			
MODEL	SMD /LED	I <sub>max</sub> (cd)	270.5	S/MH (C0/180)	1.33
NOMINAL POWER (W)	7.4592	LOR (%)	100.0	S/MH (C90/270)	1.28
RATED VOLTAGE (V)	24	TOTAL FLUX (lm)	803.60	η UP, DN (C0-180)	0.6, 48.5
NOMINAL FLUX (lm)	803.604	CIE CLASS	DIRECT	η UP, DN (C180-360)	0.6, 50.3
LAMPS INSIDE	1	η up (%)	1.2	CIBSE SHR NOM	1.25
TEST VOLTAGE (V)	24	η down (%)	98.8	CIBSE SHR MAX	1.35



C Range: 0 - 360DEG  
 C Interval: 22.5DEG  
 Test Speed: HIGH  
 Temperature: 25.0DEG  
 Test Date: 2020-5-29

γ Range: 0 - 180DEG  
 γ Interval: 1.0DEG  
 Test System: EVERFINE GO-2000B\_V1 SYSTEM V2.00.421  
 Humidity: 65.0%  
 Test Distance: 7.000m [K=1.0000]

ZONAL FLUX DIAGRAM

ZONAL FLUX DIAGRAM:

$\gamma$	C0	C45	C90	C135	C180	C225	C270	C315	$\gamma$	$\Phi$ zone	$\Phi$ total	%lum, lamp
10	261.8	262.9	265.3	267.7	268.9	267.7	265.5	263.1	0- 10	25.54	25.54	3.18,3.18
20	245.5	247.7	252.4	256.9	259.3	257.3	252.9	248.1	10- 20	73.40	98.94	12.3,12.3
30	221.1	224.4	231.0	237.5	241.1	238.4	231.8	225.0	20- 30	112.0	210.9	26.2,26.2
40	189.4	193.4	201.7	210.1	215.0	211.1	202.1	193.4	30- 40	136.1	347.0	43.2,43.2
50	151.1	155.6	165.2	175.2	180.2	176.6	166.7	156.4	40- 50	142.4	489.5	60.9,60.9
60	106.6	111.1	122.2	133.5	140.1	136.3	125.2	113.7	50- 60	130.0	619.5	77.1,77.1
70	60.35	64.38	74.31	86.34	94.56	90.84	76.60	67.35	60- 70	99.55	719.0	89.5,89.5
80	20.50	22.19	28.99	39.67	47.55	44.36	27.30	24.68	70- 80	56.96	776.0	96.6,96.6
90	2.035	1.940	0.6577	7.513	12.12	9.596	0.3498	2.718	80- 90	17.71	793.7	98.8,98.8
100	0.7270	0.8427	0.6885	0.9128	1.049	1.019	0.6087	0.7442	90-100	2.231	795.9	99,99
110	1.020	1.021	1.014	0.9186	0.7344	0.8394	0.9340	0.9262	100-110	0.8644	796.8	99.2,99.2
120	1.328	1.279	1.332	1.237	1.060	1.196	1.270	1.248	110-120	1.079	797.9	99.3,99.3
130	1.660	1.643	1.629	1.565	1.378	1.528	1.577	1.552	120-130	1.265	799.1	99.4,99.4
140	1.947	1.902	1.891	1.852	1.692	1.825	1.854	1.835	130-140	1.325	800.4	99.6,99.6
150	2.216	2.157	2.126	2.117	2.007	2.084	2.105	2.093	140-150	1.244	801.7	99.8,99.8
160	2.402	2.339	2.287	2.292	2.245	2.269	2.262	2.264	150-160	1.019	802.7	99.9,99.9
170	2.507	2.447	2.402	2.414	2.410	2.423	2.381	2.387	160-170	0.6677	803.4	100,100
180	2.472	2.461	2.427	2.435	2.472	2.461	2.420	2.439	170-180	0.2321	803.6	100,100
DEG	LUMINOUS INTENSITY:cd									UNIT:lm		

Conical surface Flux(90deg): 418.62 lm

%lum = 52.1%

%lamp = 52.1%

Conical surface Flux(120deg): 619.45 lm

%lum = 77.1%

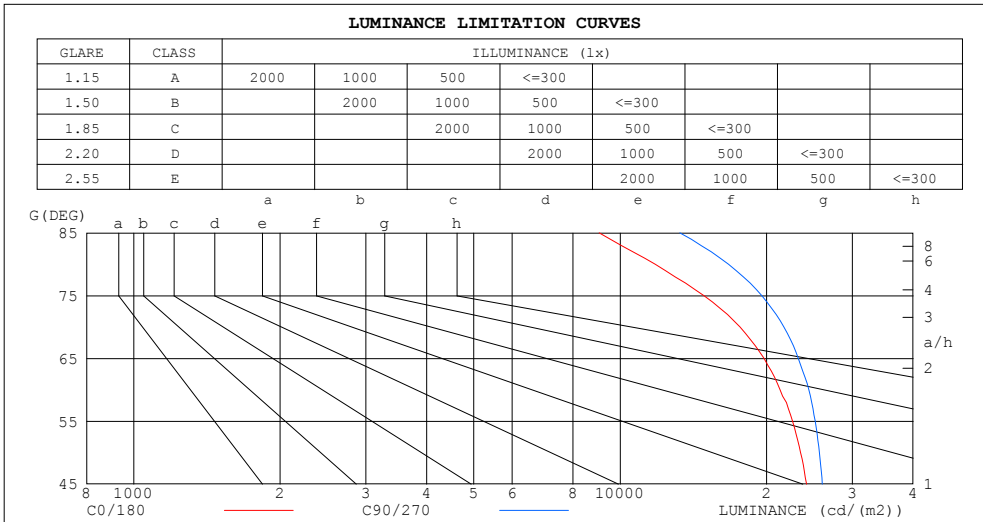
%lamp = 77.1%

C Range: 0 - 360DEG  
 C Interval: 22.5DEG  
 Test Speed: HIGH  
 Temperature:25.0DEG  
 Test Date:2020-5-29

$\gamma$  Range: 0 - 180DEG  
 $\gamma$  Interval: 1.0DEG  
 Test System:EVERFINE GO-2000B\_V1 SYSTEM V2.00.421  
 Humidity:65.0%  
 Test Distance:7.000m [K=1.0000]

**LUMINANCE LIMITATION CURVES**

Test:U:24.000V I:0.3108A P:7.4592W PF:1.0000 Freq:50.00Hz Lamp Flux:803.604x1 lm		
NAME: UB-AS-DYN276290C	TYPE:LED Strip	WEIGHT:Kg
SPEC.:7.8W	DIM.: 1000*10*4 (MM)	SERIAL No.:001
MFR.: Flexfire LEDs, Inc.	SUR.:1000*10 (MM)	Shielding Angle:120



LUMINANCE cd/(m2)		
G (DEG)	C0/180	C90/270
85	9061	13262
80	11805	16688
75	14869	19556
70	17641	21718
65	19755	23246
60	21321	24426
55	22611	25164
50	23497	25689
45	24177	26048

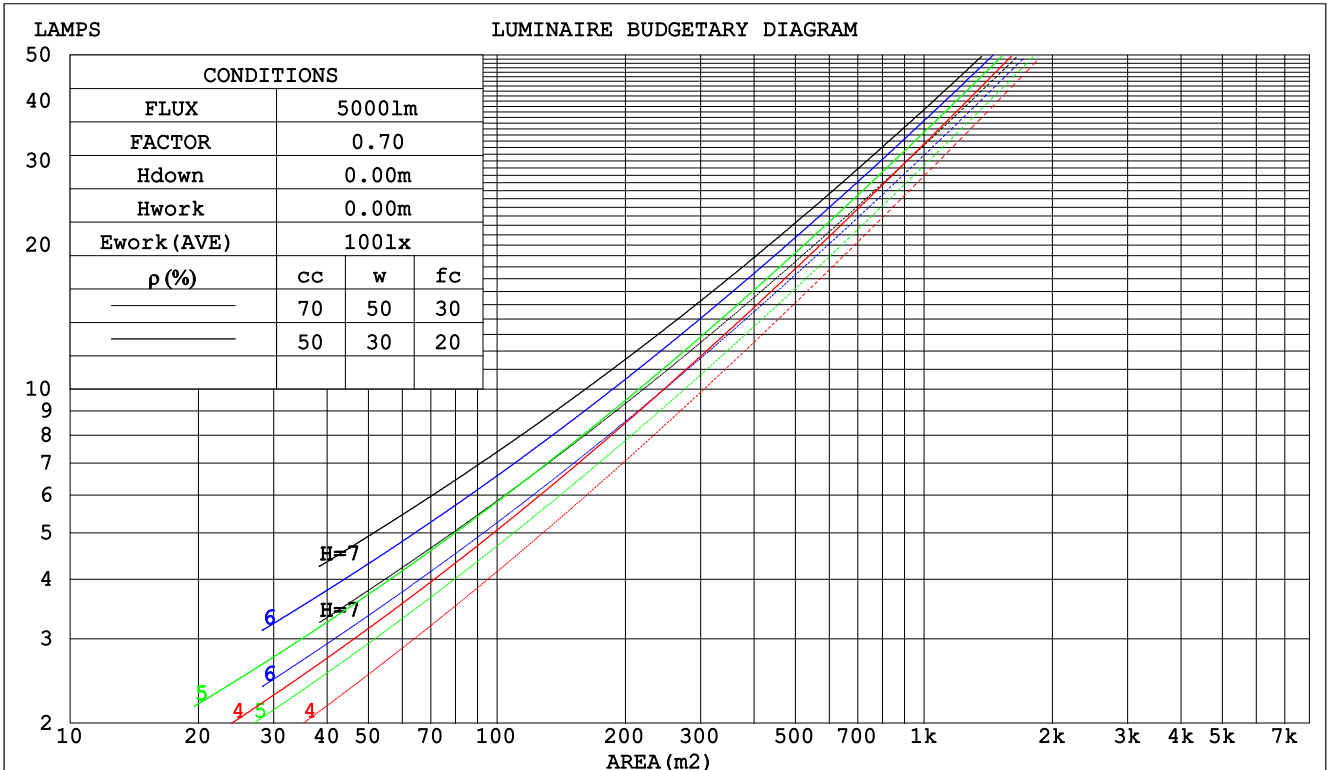
C Range: 0 - 360DEG  
 C Interval: 22.5DEG  
 Test Speed: HIGH  
 Temperature:25.0DEG  
 Test Date:2020-5-29

$\gamma$  Range: 0 - 180DEG  
 $\gamma$  Interval: 1.0DEG  
 Test System:EVERFINE GO-2000B\_V1 SYSTEM V2.00.421  
 Humidity:65.0%  
 Test Distance:7.000m [K=1.0000]

**CU AND LUMINAIRE BUDGETARY ESTIMATE DIAGRAM**

Test:U:24.000V I:0.3108A P:7.4592W PF:1.0000 Freq:50.00Hz Lamp Flux:803.604x1 lm		
NAME: UB-AS-DYN276290C	TYPE:LED Strip	WEIGHT:Kg
SPEC.:7.8W	DIM.: 1000*10*4 (MM)	SERIAL No.:001
MFR.: Flexfire LEDs, Inc.	SUR.:1000*10 (MM)	Shielding Angle:120

pcc	80%			70%			50%			30%			10%			0
	50%	30%	10%	50%	30%	10%	50%	30%	10%	50%	30%	10%	50%	30%	10%	0
pw																0
pfc																0
RCR	RCR:Room Cavity Ratio			Coefficients of Utilization(CU)												
0.0	1.19	1.19	1.19	1.16	1.16	1.16	1.10	1.10	1.10	1.05	1.05	1.05	1.01	1.01	1.01	.99
1.0	1.03	.99	.95	1.01	.97	.93	.96	.93	.90	.92	.90	.87	.88	.86	.84	.82
2.0	.90	.83	.77	.88	.81	.76	.84	.79	.74	.81	.76	.72	.77	.74	.70	.68
3.0	.79	.70	.64	.77	.69	.63	.74	.67	.62	.71	.65	.61	.68	.63	.59	.57
4.0	.70	.61	.54	.68	.60	.53	.66	.58	.53	.63	.57	.52	.61	.55	.51	.49
5.0	.62	.53	.46	.61	.52	.46	.59	.51	.45	.56	.50	.45	.55	.49	.44	.42
6.0	.56	.47	.40	.55	.46	.40	.53	.45	.40	.51	.44	.39	.49	.43	.39	.37
7.0	.51	.42	.36	.50	.41	.35	.48	.40	.35	.46	.40	.35	.45	.39	.34	.32
8.0	.46	.38	.32	.45	.37	.31	.44	.36	.31	.43	.36	.31	.41	.35	.31	.29
9.0	.42	.34	.28	.42	.34	.28	.40	.33	.28	.39	.33	.28	.38	.32	.28	.26
10.0	.39	.31	.26	.38	.31	.26	.37	.30	.25	.36	.30	.25	.35	.29	.25	.23



C Range: 0 - 360DEG  
 C Interval: 22.5DEG  
 Test Speed: HIGH  
 Temperature:25.0DEG  
 Test Date:2020-5-29

γ Range: 0 - 180DEG  
 γ Interval: 1.0DEG  
 Test System:EVERFINE GO-2000B\_V1 SYSTEM V2.00.421  
 Humidity:65.0%  
 Test Distance:7.000m [K=1.0000]

WEC AND CCEC

Test:U:24.000V I:0.3108A P:7.4592W PF:1.0000 Freq:50.00Hz Lamp Flux:803.604x1 lm								
NAME: UB-AS-DYN276290C			TYPE:LED Strip			WEIGHT:Kg		
SPEC.:7.8W			DIM.: 1000*10*4 (MM)			SERIAL No.:001		
MFR.: Flexfire LEDs, Inc.			SUR.:1000*10 (MM)			Shielding Angle:120		

pcc	80%			70%			50%			30%			10%			0
pw	50%	30%	10%	50%	30%	10%	50%	30%	10%	50%	30%	10%	50%	30%	10%	0
pfc	20%			20%			20%			20%			20%			0
RCR	RCR:Room Cavity Ratio						Wall Exitance Coefficients(WEC)									
0.0																
1.0	.315	.179	.057	.307	.175	.056	.293	.168	.054	.280	.162	.052	.269	.156	.050	
2.0	.295	.162	.050	.288	.159	.049	.276	.153	.048	.264	.148	.046	.254	.144	.045	
3.0	.272	.145	.043	.266	.143	.043	.255	.138	.042	.245	.134	.041	.236	.131	.040	
4.0	.251	.130	.038	.246	.129	.038	.236	.125	.037	.227	.122	.037	.218	.119	.036	
5.0	.232	.118	.034	.227	.117	.034	.218	.114	.033	.210	.111	.033	.203	.108	.033	
6.0	.215	.108	.031	.211	.106	.031	.203	.104	.030	.196	.102	.030	.189	.099	.030	
7.0	.200	.099	.028	.196	.098	.028	.189	.096	.028	.183	.094	.027	.176	.092	.027	
8.0	.186	.091	.026	.183	.090	.025	.177	.088	.025	.171	.087	.025	.165	.085	.025	
9.0	.175	.084	.024	.172	.084	.023	.166	.082	.023	.161	.081	.023	.156	.079	.023	
10.0	.164	.079	.022	.161	.078	.022	.156	.077	.022	.152	.075	.021	.147	.074	.021	

pcc	80%			70%			50%			30%			10%			0
pw	50%	30%	10%	50%	30%	10%	50%	30%	10%	50%	30%	10%	50%	30%	10%	0
pfc	20%			20%			20%			20%			20%			0
RCR	RCR:Room Cavity Ratio						Ceiling Cavity Exitance Coefficients(CCEC)									
0.0	.200	.200	.200	.171	.171	.171	.117	.117	.117	.067	.067	.067	.021	.021	.021	
1.0	.190	.166	.143	.163	.142	.123	.111	.098	.085	.064	.057	.050	.021	.018	.016	
2.0	.182	.141	.107	.156	.122	.093	.107	.084	.065	.062	.049	.038	.020	.016	.012	
3.0	.175	.124	.084	.150	.107	.072	.103	.074	.051	.059	.043	.030	.019	.014	.010	
4.0	.167	.111	.068	.143	.096	.059	.098	.067	.041	.057	.039	.025	.018	.013	.008	
5.0	.159	.100	.057	.137	.087	.049	.094	.061	.035	.055	.036	.021	.018	.012	.007	
6.0	.152	.092	.049	.131	.080	.042	.090	.056	.030	.052	.033	.018	.017	.011	.006	
7.0	.145	.085	.043	.125	.074	.037	.086	.052	.026	.050	.030	.016	.016	.010	.005	
8.0	.139	.079	.038	.120	.069	.033	.083	.048	.024	.048	.029	.014	.016	.009	.005	
9.0	.133	.074	.035	.114	.065	.030	.079	.045	.022	.046	.027	.013	.015	.009	.004	
10.0	.127	.070	.032	.110	.061	.028	.076	.043	.020	.044	.025	.012	.014	.008	.004	

C Range: 0 - 360DEG  
 C Interval: 22.5DEG  
 Test Speed: HIGH  
 Temperature:25.0DEG  
 Test Date:2020-5-29

γ Range: 0 - 180DEG  
 γ Interval: 1.0DEG  
 Test System:EVERFINE GO-2000B\_V1 SYSTEM V2.00.421  
 Humidity:65.0%  
 Test Distance:7.000m [K=1.0000]

**UGR(Unified Glare Rating) Table**

Test:U:24.000V I:0.3108A P:7.4592W PF:1.0000 Freq:50.00Hz Lamp Flux:803.604x1 lm										
NAME: UB-AS-DYN276290C					TYPE:LED Strip			WEIGHT:Kg		
SPEC.:7.8W					DIM.: 1000*10*4(MM)			SERIAL No.:001		
MFR.: Flexfire LEDs, Inc.					SUR.:1000*10(MM)			Shielding Angle:120		
ceiling/cavity	0.7	0.7	0.5	0.5	0.3	0.7	0.7	0.5	0.5	0.3
walls	0.5	0.3	0.5	0.3	0.3	0.5	0.3	0.5	0.3	0.3
working plane	0.2	0.2	0.2	0.2	0.2	0.2	0.2	0.2	0.2	0.2
Room dimensions	Viewed crosswise					Viewed endwise				
x = 2H y = 2H	23.3	24.8	23.6	25.0	25.3	23.8	25.3	24.1	25.5	25.8
3H	24.6	26.0	24.9	26.2	26.5	25.3	26.7	25.6	26.9	27.2
4H	25.0	26.3	25.3	26.6	26.9	25.8	27.1	26.1	27.4	27.7
6H	25.2	26.5	25.6	26.8	27.1	26.2	27.4	26.5	27.7	28.0
8H	25.3	26.5	25.6	26.8	27.1	26.3	27.5	26.6	27.8	28.1
12H	25.3	26.5	25.7	26.8	27.1	26.3	27.5	26.7	27.8	28.1
4H 2H	23.9	25.2	24.2	25.5	25.8	24.3	25.6	24.6	25.9	26.2
3H	25.3	26.5	25.7	26.8	27.1	25.9	27.1	26.3	27.4	27.7
4H	25.9	26.9	26.2	27.3	27.6	26.6	27.6	27.0	28.0	28.3
6H	26.2	27.1	26.6	27.5	27.9	27.0	28.0	27.5	28.4	28.8
8H	26.3	27.2	26.7	27.5	28.0	27.2	28.1	27.6	28.5	28.9
12H	26.3	27.1	26.8	27.5	28.0	27.3	28.1	27.7	28.5	28.9
8H 4H	26.1	26.9	26.5	27.3	27.8	26.7	27.6	27.1	28.0	28.4
6H	26.5	27.2	27.0	27.7	28.1	27.3	28.0	27.8	28.5	28.9
8H	26.7	27.3	27.1	27.8	28.2	27.5	28.2	28.0	28.6	29.1
12H	26.7	27.3	27.2	27.8	28.3	27.7	28.2	28.2	28.7	29.2
12H 4H	26.1	26.9	26.5	27.3	27.7	26.7	27.5	27.1	27.9	28.4
6H	26.5	27.2	27.0	27.6	28.1	27.3	28.0	27.8	28.4	28.9
8H	26.7	27.3	27.2	27.7	28.2	27.5	28.1	28.0	28.6	29.1
Variations with the observer position at spacings:										
S = 1.0H	+ 0.2 / - 0.2					+ 0.2 / - 0.2				
1.5H	+ 0.2 / - 0.4					+ 0.2 / - 0.3				
2.0H	+ 0.3 / - 0.3					+ 0.3 / - 0.3				

CIE Pub.117, 803.6 lm Total Lamp Luminous Flux Corrected (8log(F/F0) = -0.8)  
 Area: 0.01 m2

C Range: 0 - 360DEG  
 C Interval: 22.5DEG  
 Test Speed: HIGH  
 Temperature:25.0DEG  
 Test Date:2020-5-29

γ Range: 0 - 180DEG  
 γ Interval: 1.0DEG  
 Test System:EVERFINE GO-2000B\_V1 SYSTEM V2.00.421  
 Humidity:65.0%  
 Test Distance:7.000m [K=1.0000]

**UTILIZATION FACTORS TABLE**

Test:U:24.000V I:0.3108A P:7.4592W PF:1.0000 Freq:50.00Hz Lamp Flux:803.604x1 lm		
NAME: UB-AS-DYN276290C	TYPE:LED Strip	WEIGHT:Kg
SPEC.:7.8W	DIM.: 1000*10*4 (MM)	SERIAL No.:001
MFR.: Flexfire LEDs, Inc.	SUR.:1000*10 (MM)	Shielding Angle:120

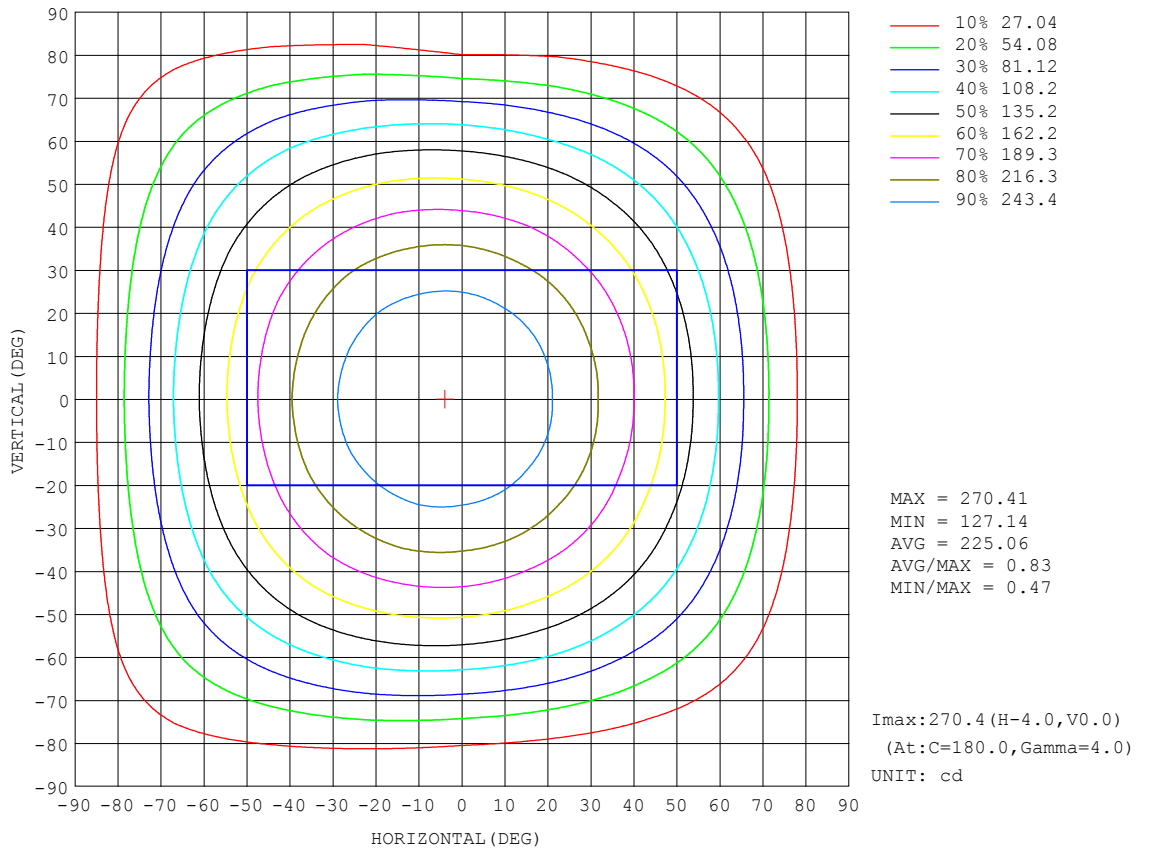
REFLECTANCE										
Ceiling	0.8	0.8	0.8	0.7	0.7	0.7	0.5	0.5	0.5	0
Walls	0.7	0.5	0.3	0.7	0.5	0.3	0.7	0.5	0.3	0
Working plane	0.2	0.2	0.2	0.2	0.2	0.2	0.2	0.2	0.2	0
ROOM INDEX	UTILIZATION FACTORS (PERCENT) $k(RI) \times RCR = 5$									
k = 0.60	57	45	38	56	45	38	55	44	38	31
0.80	67	55	47	66	54	47	64	54	47	40
1.00	75	64	56	74	63	56	71	65	56	48
1.25	82	72	64	81	71	64	78	69	63	55
1.50	87	77	70	85	76	70	82	74	68	61
2.00	94	85	79	92	84	78	89	82	76	68
2.50	98	90	84	96	89	83	92	86	81	72
3.00	102	95	89	99	93	88	95	90	85	77
4.00	106	100	95	103	98	94	99	94	91	81
5.00	108	103	99	106	101	97	101	97	94	84
ROOM INDEX	UF(total)									Direct
According to DIN EN 13032-2 2004			Suspended				SHRNOM = 1.25			

C Range: 0 - 360DEG  
 C Interval: 22.5DEG  
 Test Speed: HIGH  
 Temperature:25.0DEG  
 Test Date:2020-5-29

$\gamma$  Range: 0 - 180DEG  
 $\gamma$  Interval: 1.0DEG  
 Test System:EVERFINE GO-2000B\_V1 SYSTEM V2.00.421  
 Humidity:65.0%  
 Test Distance:7.000m [K=1.0000]

**ISOCANDELA DIAGRAM**

Test:U:24.000V I:0.3108A P:7.4592W PF:1.0000 Freq:50.00Hz Lamp Flux:803.604x1 lm		
NAME: UB-AS-DYN276290C	TYPE:LED Strip	WEIGHT:Kg
SPEC.:7.8W	DIM.: 1000*10*4 (MM)	SERIAL No.:001
MFR.: Flexfire LEDs, Inc.	SUR.:1000*10 (MM)	Shielding Angle:120



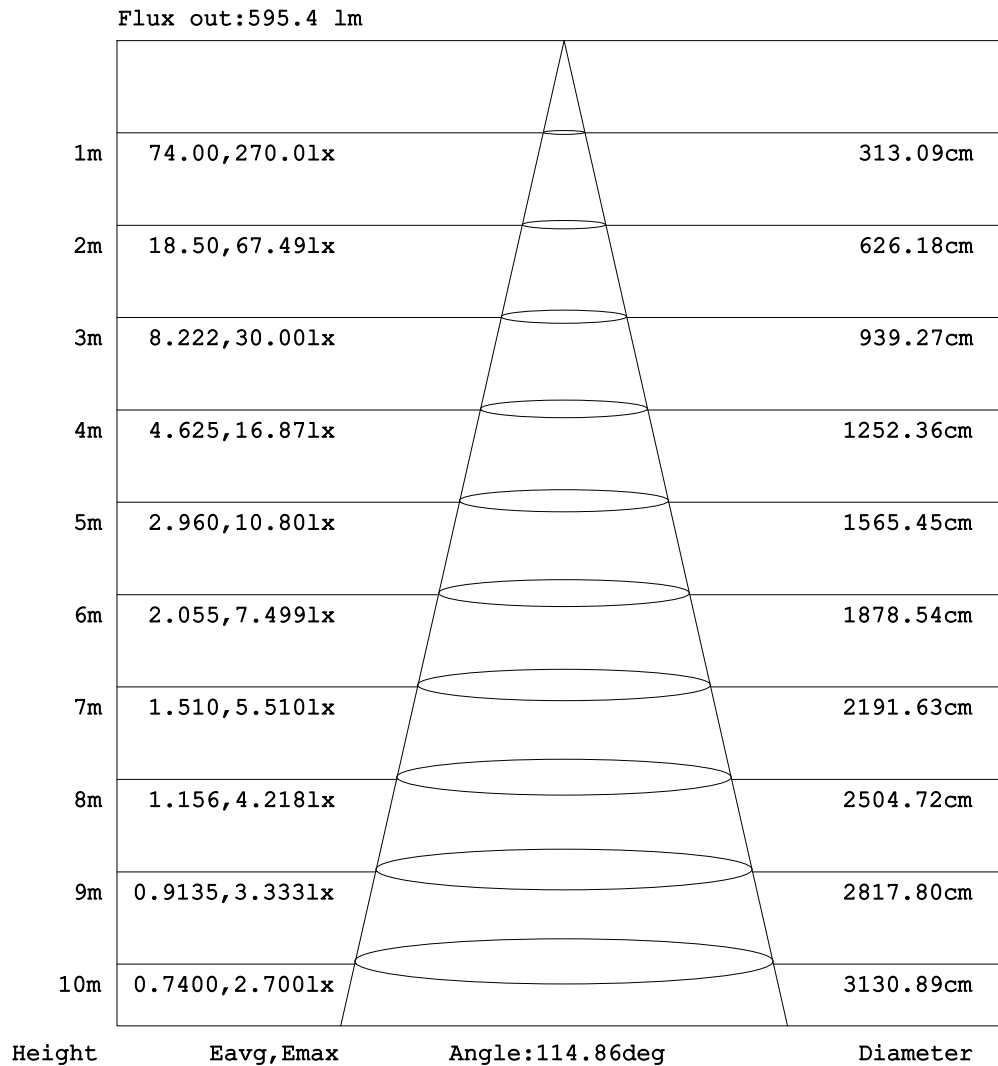
C Range: 0 - 360DEG  
 C Interval: 22.5DEG  
 Test Speed: HIGH  
 Temperature:25.0DEG  
 Test Date:2020-5-29

$\gamma$  Range: 0 - 180DEG  
 $\gamma$  Interval: 1.0DEG  
 Test System:EVERFINE GO-2000B\_V1 SYSTEM V2.00.421  
 Humidity:65.0%  
 Test Distance:7.000m [K=1.0000]



**AAI Figure**

Test:U:24.000V I:0.3108A P:7.4592W PF:1.0000 Freq:50.00Hz Lamp Flux:803.604x1 lm		
NAME: UB-AS-DYN276290C	TYPE:LED Strip	WEIGHT:Kg
SPEC.:7.8W	DIM.: 1000*10*4(MM)	SERIAL No.:001
MFR.: Flexfire LEDs, Inc.	SUR.:1000*10(MM)	Shielding Angle:120



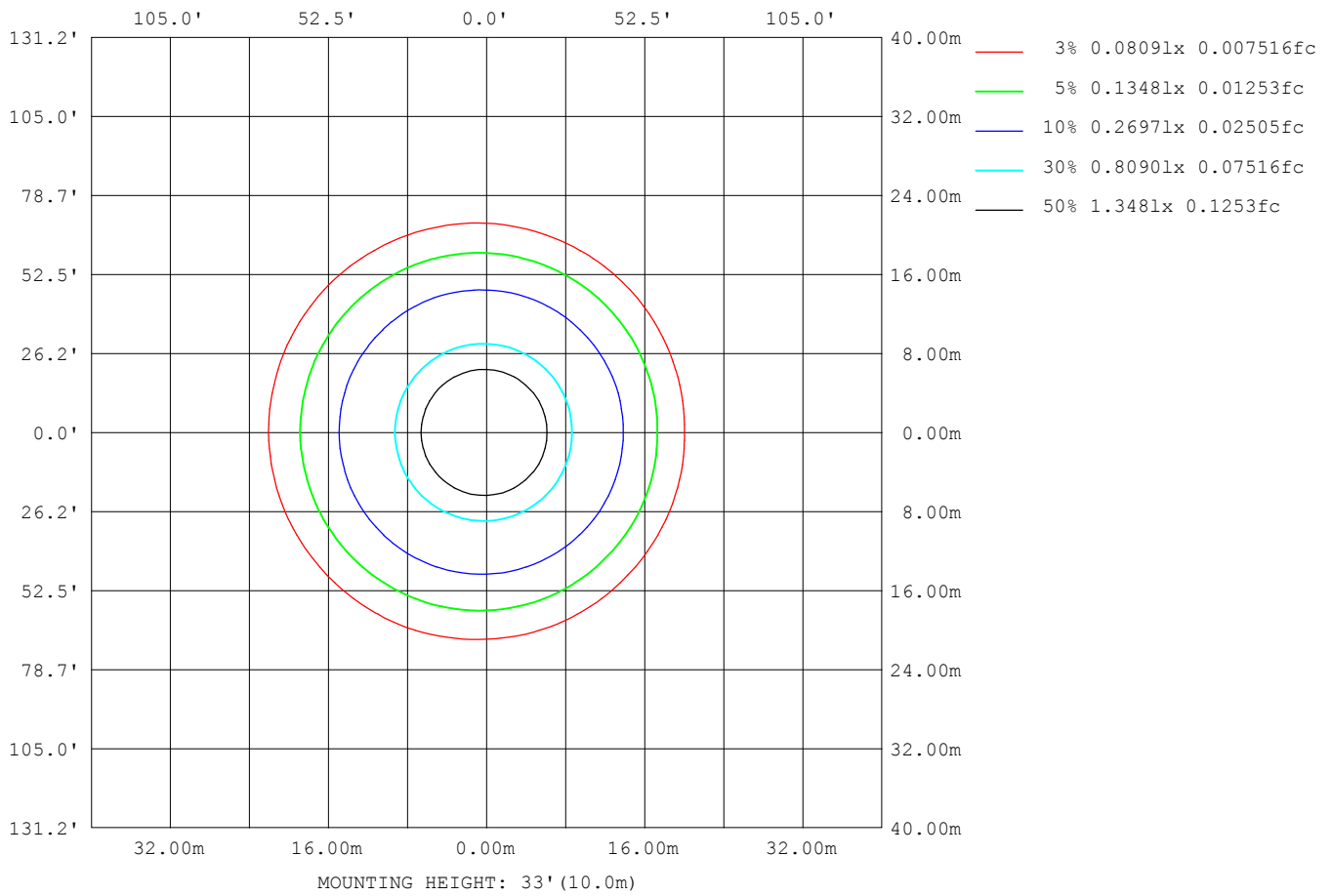
Note:The Curves indicate the illuminated area and the average illumination when the luminaire is at different distance.

C Range: 0 - 360DEG  
 C Interval: 22.5DEG  
 Test Speed: HIGH  
 Temperature:25.0DEG  
 Test Date:2020-5-29

γ Range: 0 - 180DEG  
 γ Interval: 1.0DEG  
 Test System:EVERFINE GO-2000B\_V1 SYSTEM V2.00.421  
 Humidity:65.0%  
 Test Distance:7.000m [K=1.0000]

**ISOLUX DIAGRAM**

Test:U:24.000V I:0.3108A P:7.4592W PF:1.0000 Freq:50.00Hz Lamp Flux:803.604x1 lm		
NAME: UB-AS-DYN276290C	TYPE:LED Strip	WEIGHT:Kg
SPEC.:7.8W	DIM.: 1000*10*4 (MM)	SERIAL No.:001
MFR.: Flexfire LEDs, Inc.	SUR.:1000*10 (MM)	Shielding Angle:120



C Range: 0 - 360DEG  
 C Interval: 22.5DEG  
 Test Speed: HIGH  
 Temperature:25.0DEG  
 Test Date:2020-5-29

γ Range: 0 - 180DEG  
 γ Interval: 1.0DEG  
 Test System:EVERFINE GO-2000B\_V1 SYSTEM V2.00.421  
 Humidity:65.0%  
 Test Distance:7.000m [K=1.0000]

**LED Avg.L Report**

Test:U:24.000V I:0.3108A P:7.4592W PF:1.0000 Freq:50.00Hz Lamp Flux:803.604x1 lm		
NAME: UB-AS-DYN276290C	TYPE:LED Strip	WEIGHT:Kg
SPEC.:7.8W	DIM.: 1000*10*4 (MM)	SERIAL No.:001
MFR.: Flexfire LEDs, Inc.	SUR.:1000*10 (MM)	Shielding Angle:120

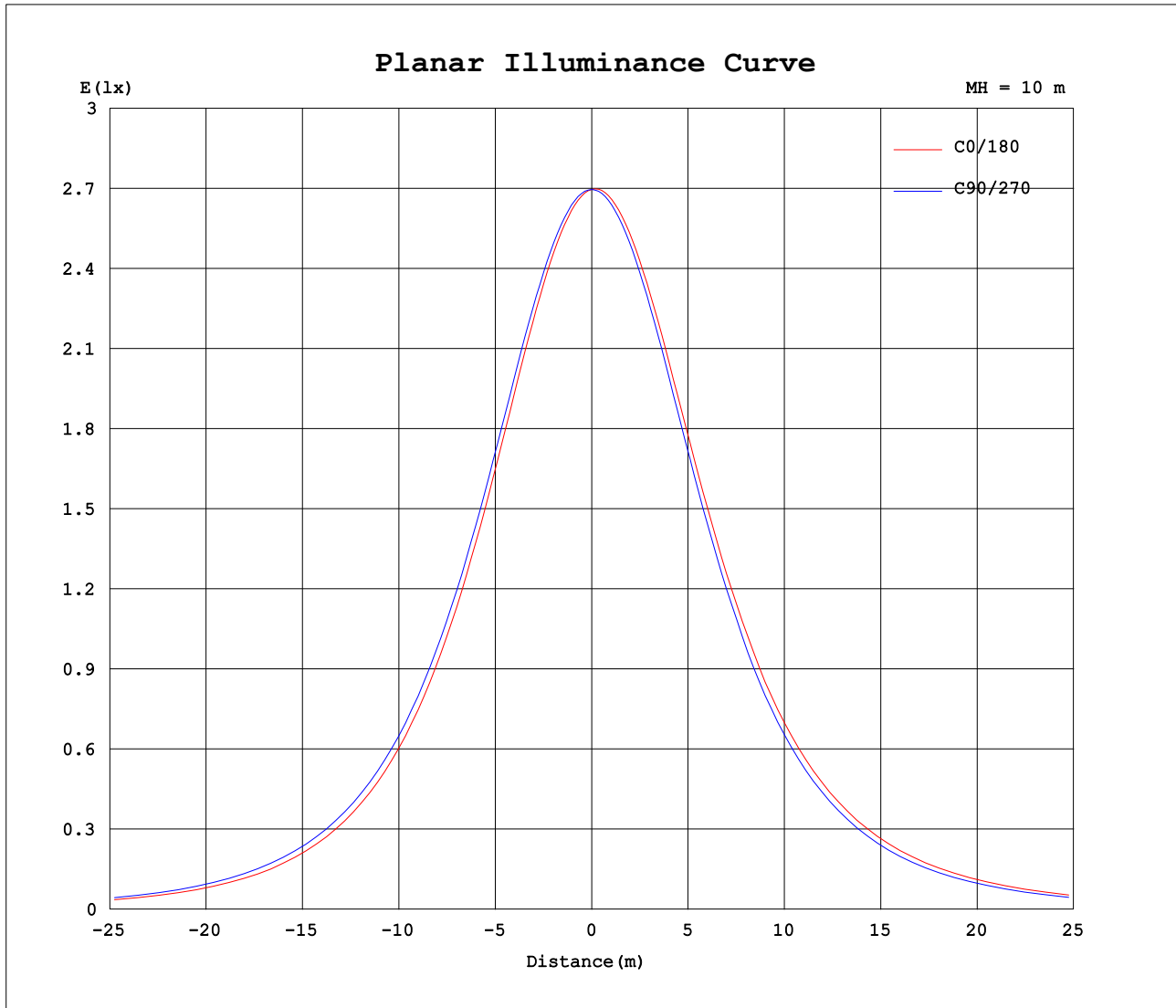
AvgL	cd/m2
L_0~180 (65) av	23820
L_0~180 (75) av	21115
L_0~180 (85) av	20057
L_90~270 (65) av	23746
L_90~270 (75) av	19775
L_90~270 (85) av	10638
L_45 (65) av	23824
L_45 (75) av	20877
L_45 (85) av	17891

Standard: GB/T 29293-2012

C Range: 0 - 360DEG  
 C Interval: 22.5DEG  
 Test Speed: HIGH  
 Temperature:25.0DEG  
 Test Date:2020-5-29

γ Range: 0 - 180DEG  
 γ Interval: 1.0DEG  
 Test System:EVERFINE GO-2000B\_V1 SYSTEM V2.00.421  
 Humidity:65.0%  
 Test Distance:7.000m [K=1.0000]

**Planar Illuminance Curve**



C Range: 0 - 360DEG  
 C Interval: 22.5DEG  
 Test Speed: HIGH  
 Temperature:25.0DEG  
 Test Date:2020-5-29

$\gamma$  Range: 0 - 180DEG  
 $\gamma$  Interval: 1.0DEG  
 Test System:EVERFINE GO-2000B\_V1 SYSTEM V2.00.421  
 Humidity:65.0%  
 Test Distance:7.000m [K=1.0000]

LUMINOUS DISTRIBUTION INTENSITY DATA

Test:U:24.000V I:0.3108A P:7.4592W PF:1.0000 Freq:50.00Hz Lamp Flux:803.604x1 lm		
NAME: UB-AS-DYN276290C	TYPE:LED Strip	WEIGHT:Kg
SPEC.:7.8W	DIM.: 1000*10*4 (MM)	SERIAL No.:001
MFR.: Flexfire LEDs, Inc.	SUR.:1000*10 (MM)	Shielding Angle:120

Table--1

UNIT: cd

C (DEG) \ γ (DEG)	0	22.5	45	67.5	90	112.5	135	157.5	180	202.5	225	247.5	270	292.5	315	337.5			
0	270	270	270	270	270	270	270	270	270	270	270	270	270	270	270	270			
5	267	267	267	268	269	269	270	270	270	270	270	269	269	268	267	267			
10	262	262	263	264	265	267	268	268	269	268	268	267	265	264	263	262			
15	255	255	256	258	260	262	263	265	265	265	264	262	260	258	257	255			
20	245	247	248	250	252	255	257	259	259	259	257	255	253	250	248	246			
25	234	236	237	240	243	246	248	250	251	250	249	246	243	240	237	235			
30	221	223	224	228	231	235	238	240	241	240	238	235	232	228	225	222			
35	206	207	210	214	217	222	225	228	229	228	226	222	218	214	210	208			
40	189	190	193	197	202	205	210	213	215	214	211	207	202	198	193	191			
45	171	172	175	179	184	189	193	196	198	198	194	191	185	181	176	173			
50	151	152	156	160	165	170	175	178	180	180	177	173	167	162	156	153			
55	130	131	134	139	144	150	155	159	161	161	157	153	147	141	136	132			
60	107	108	111	117	122	128	134	137	140	140	136	132	125	119	114	109			
65	83.5	85.3	87.9	93.3	98.3	105	110	115	118	118	114	109	102	95.9	90.7	86.2			
70	60.3	62.0	64.4	69.4	74.3	81.2	86.3	91.5	94.6	93.5	90.8	85.1	76.6	72.3	67.4	62.8			
75	38.5	39.8	41.8	46.2	50.6	57.2	62.4	67.6	70.8	69.9	67.3	61.6	51.7	48.0	44.7	40.7			
80	20.5	21.2	22.2	25.5	29.0	34.9	39.7	44.5	47.6	46.8	44.4	39.2	27.3	28.4	24.7	20.1			
85	7.90	8.19	8.42	9.78	11.6	16.3	20.2	24.5	27.1	26.3	24.3	19.8	6.98	12.0	9.46	7.90			
90	2.04	2.06	1.94	1.96	0.66	4.75	7.51	10.4	12.1	11.4	9.60	6.21	0.35	2.45	2.72	2.51			
95	0.74	0.89	1.04	0.78	0.55	1.07	2.06	3.34	4.18	4.04	3.10	1.54	0.47	0.84	0.90	0.84			
100	0.73	0.84	0.84	0.75	0.69	0.70	0.91	0.95	1.05	1.16	1.02	0.65	0.61	0.63	0.74	0.74			
105	0.88	0.91	0.88	0.90	0.85	0.83	0.84	0.80	0.60	0.72	0.76	0.71	0.77	0.76	0.78	0.77			
110	1.02	1.04	1.02	1.05	1.01	1.00	0.92	0.89	0.73	0.79	0.84	0.89	0.93	0.93	0.93	0.88			
115	1.18	1.20	1.17	1.20	1.17	1.17	1.08	1.04	0.90	0.93	1.02	1.07	1.11	1.08	1.09	1.05			
120	1.33	1.35	1.28	1.35	1.33	1.31	1.24	1.21	1.06	1.11	1.20	1.23	1.27	1.23	1.25	1.23			
125	1.50	1.51	1.49	1.50	1.48	1.47	1.40	1.37	1.23	1.28	1.37	1.41	1.42	1.39	1.40	1.41			
130	1.66	1.66	1.64	1.65	1.63	1.63	1.56	1.54	1.38	1.44	1.53	1.56	1.58	1.54	1.55	1.57			
135	1.82	1.80	1.78	1.79	1.77	1.76	1.72	1.71	1.54	1.58	1.69	1.71	1.72	1.68	1.70	1.72			
140	1.95	1.93	1.90	1.91	1.89	1.89	1.85	1.85	1.69	1.73	1.83	1.84	1.85	1.81	1.83	1.85			
145	2.08	2.07	2.03	2.04	2.02	2.01	1.99	2.00	1.86	1.87	1.96	1.97	1.96	1.94	1.97	2.00			
150	2.22	2.19	2.16	2.15	2.13	2.13	2.12	2.14	2.01	2.00	2.08	2.09	2.11	2.06	2.09	2.13			
155	2.31	2.28	2.25	2.25	2.23	2.22	2.22	2.24	2.12	2.10	2.18	2.18	2.18	2.15	2.18	2.23			
160	2.40	2.37	2.34	2.32	2.29	2.30	2.29	2.34	2.24	2.20	2.27	2.26	2.26	2.23	2.26	2.32			
165	2.46	2.42	2.40	2.38	2.35	2.36	2.36	2.41	2.35	2.29	2.36	2.33	2.33	2.30	2.34	2.40			
170	2.51	2.46	2.45	2.43	2.40	2.41	2.41	2.48	2.41	2.37	2.42	2.38	2.38	2.36	2.39	2.45			
175	2.52	2.46	2.47	2.44	2.42	2.42	2.44	2.51	2.44	2.39	2.43	2.41	2.40	2.38	2.41	2.45			
180	2.47	2.44	2.46	2.43	2.43	2.42	2.44	2.47	2.47	2.44	2.46	2.43	2.42	2.41	2.44	2.46			

C Range: 0 - 360DEG  
 C Interval: 22.5DEG  
 Test Speed: HIGH  
 Temperature:25.0DEG  
 Test Date:2020-5-29

γ Range: 0 - 180DEG  
 γ Interval: 1.0DEG  
 Test System:EVERFINE GO-2000B\_V1 SYSTEM V2.00.421  
 Humidity:65.0%  
 Test Distance:7.000m [K=1.0000]