

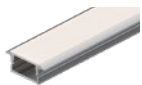
Mounting Channels

Installation Guide

Installing Flexfire LEDs Mounting Channels is a straightforward process that can enhance the appearance, durability, and functionality of your lighting installation. Our channels are designed to ensure that your strip light lives a long life. By acting as a heat sink and providing a barrier from dust and debris, aluminum channels can extend the life of your strip light while also making maintenance simple. **Keep in mind that the order of operations for this installation guide may be different according to your specific project needs. Contact us if you have any questions.**

Materials Needed

- Aluminum Channels and Covers



- End Caps



- Mounting Brackets or Clips



- LED Strip Lights



- LED Driver



- Measuring Tape, Painters Tape, and Pencil



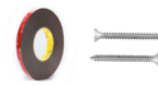
- Miter Saw



- Screwdriver and Hex Tool



- Screws or Adhesive (for mounting)

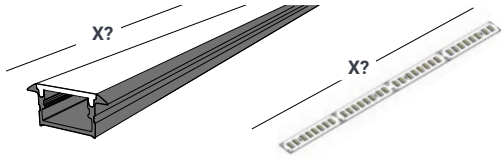


- Cleaning Solution



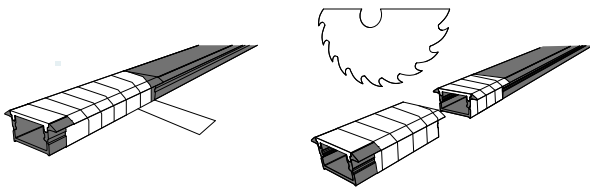
Installation Instructions for Recessed Channels

1. Measure and Plan



Determine where you want to install the LED strip light and aluminum channels. Measure the length of the channels and strip light needed to fit your desired space.

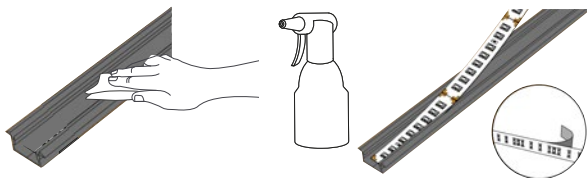
2. Cut Channels and LED Strips



Cut the aluminum channels and covers to the desired length using a mitre saw or a cutting tool suitable for aluminum. Use painter's tape to secure the channel and the cover together to achieve a smooth seam line.

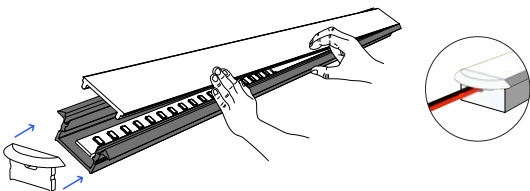
Please refer to our [LED Strip Light Installation Guide](#) for cutting and installing LED strip lights.

3. Attach the LED Strips



Clean any dust or dirt from the aluminum channels. Use rubbing alcohol or alcohol pads for optimal results. Insert the strip light into the channels by peeling the cover of the 3M tape backing a few inches at a time, while gently pressing the strip light to the channel. Ensure that the strip light is snugly fitted into the channel, so it won't fall out.

4. Insert Covers and Attach End Caps



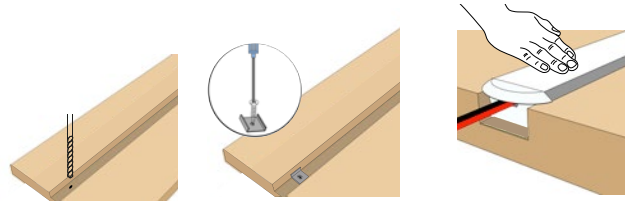
Insert the tip of the cover into the extrusion. Then, gently press down on different sections of the cover without bending or breaking it. Snap or slide the end caps onto the open ends of the channels to provide a finished look and protection for the strip light. Use the open end caps to run power cables out of the channel and the closed end caps to complete runs.

5. Wire the LED Strips and Test the Installation



Connect the strip light to the LED driver. Please refer to our [LED Strip Light Installation Guide](#) and the manufacturer's installation instructions for the particular LED driver you have. Connect the LED driver to power to verify that the strip light is functioning correctly. Troubleshoot if needed.

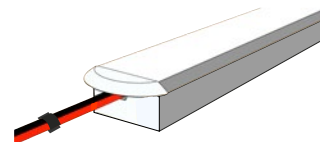
6. Cut Channel Mounting Surface and Mount the Channels



Cut the channel mounting surface and position the channels where you want them to be installed. If your channels have mounting brackets or clips, drill an appropriately-sized hole on the flat surface where you are going to attach the channels. Using screws, attach the mounting brackets or clips in place, making sure they are level and aligned correctly. Mount the channels onto the mounting clips. You may also install the aluminum channels using mounting glue or adhesive suitable for your surface if you don't want to use mounting clips or screws.

7. Secure the Wires (Optional)

Use cable clips or adhesive-backed clips to secure the wires behind the channels or nearby surfaces, keeping them neat and organized.



8. Enjoy Your Installation

Turn on your LED strip lights and enjoy your newly installed, well-lit space. Remember to follow all safety precautions and the specific instructions provided by the manufacturer of your LED strips, aluminum channels, and associated components throughout the installation process.

NOTE:

To ensure that your strip lights meet electrical code requirements, use the proper in-wall or plenum-rated wire if applicable.