

# Mounting Channels

Our aluminum channels help your LED strips last longer and perform their best by keeping them cool during use. Their housing protects your lights from dust and dirt, making cleaning easier. The channels include everything for installation on almost any surface—flat or built-in, depending on the model—so your project looks neat, finished, and ready for everyday use.



## Specifications

<b>Channel Material</b>	Aluminum
<b>Color</b>	Anodized Aluminum Finish
<b>Cover Material</b>	Polycarbonate
<b>End Cap Material</b>	PVC
<b>Mounting Clip Material</b>	Stainless Steel
<b>Field Cuttable</b>	Yes
<b>Environment</b>	Suitable for dry/damp location use

## What's Included

- We've bundled all components into a kit that includes the channel, cover, end caps, mounting clips, and other accessories.\*
- Most channels come with different cover options, so we've got you whether you want a clear lens for brighter light or a matte lens for a softer, diffused glow.

\*Included accessories vary for each aluminum channel. For more information about the included items and accessories, refer to each specific aluminum channel below.



6 years  
Warranty

# Ion™ Mounting Channel Kit

## Heat Sink



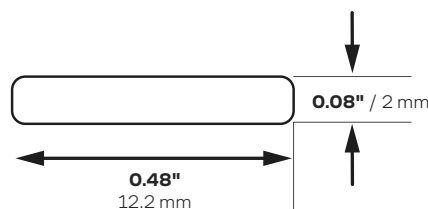
### Mounting Type



Surface Mount

Surface mount channel for installers who just need a heat sink and nothing more. Adhered to a clean, flat surface with 3M Adhesive or drilled through the channel.

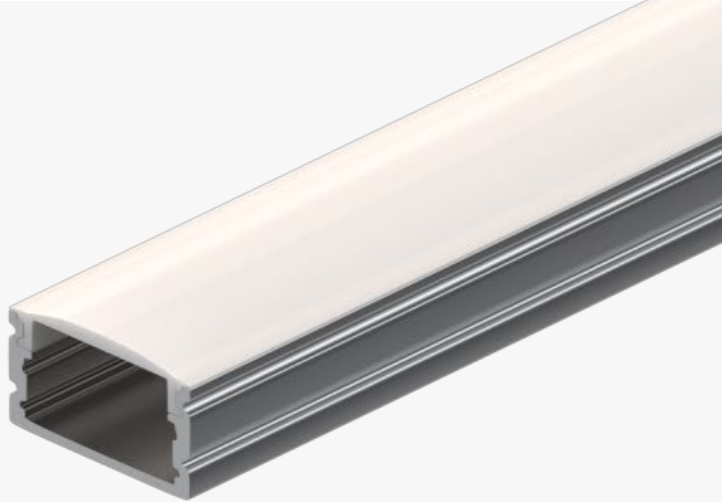
For more information about compatibility with our LED strips and connectors, please refer to our compatibility charts below.



Product Description	Product SKU	Included Accessories
Ion™ Channel	ION-CH-A-1M	1M Channel
3M Adhesive Tape for Aluminum Channel	3M-TAPE-5915-33M	100 ft spool of 3M Adhesive 5915

# Gemini™ Mounting Channel Kit

## Surface Installation



### Mounting Type



Surface Mount

### Beam Angle



80°

### Cover Type



Clear



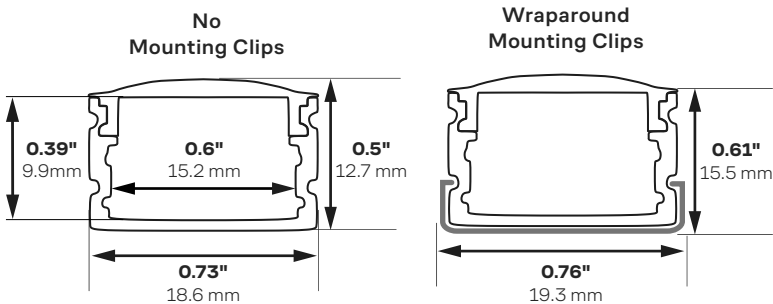
Frosted



Matte

Surface mount channel that fits most strips and connectors and offers excellent diffusion.

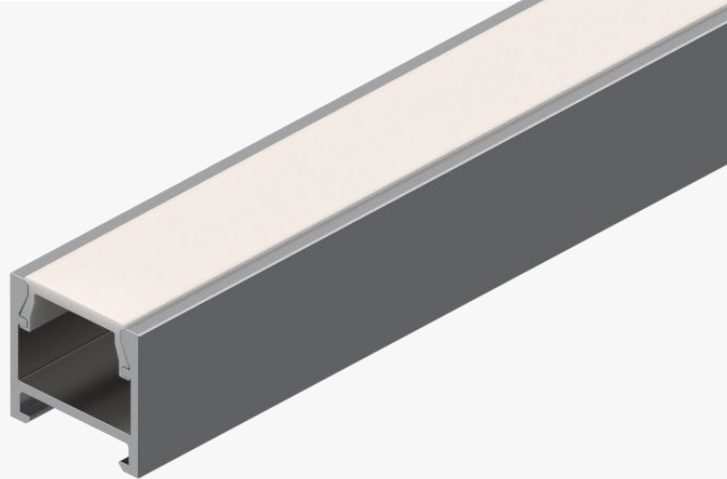
For more information about compatibility with our LED strips and connectors, please refer to our compatibility charts below.



Product Description	Product SKU	Included Accessories
Gemini™ Channel Kit with Clear Cover and Accessories	GEM-CH-A-CVR-C-1M	1M Channel, 1M Clear Cover, 1 Accessory Pack
	GEM-CH-A-CVR-C-2M	2M Channel, 2M Clear Cover, 1 Accessory Pack
Gemini™ Channel Kit with Frosted Cover and Accessories	GEM-CH-A-CVR-F-1M	1M Channel, 1M Frosted Cover, 1 Accessory Pack
	GEM-CH-A-CVR-F-2M	2M Channel, 2M Frosted Cover, 1 Accessory Pack
Gemini™ Channel Kit with Matte Cover and Accessories	GEM-CH-A-CVR-M-1M	1M Channel, 1M Matte Cover, 1 Accessory Pack
	GEM-CH-A-CVR-M-2M	2M Channel, 2M Matte Cover, 1 Accessory Pack
Gemini™ Accessory Pack	GEM-EC-CLP-KIT	2 Open End Caps, 2 Closed End Caps, 4 Mounting Clips

# Kepler™ Mounting Channel Kit

## Surface Installation



### Mounting Type



Surface Mount

### Beam Angle



60°

### Cover Type



Clear



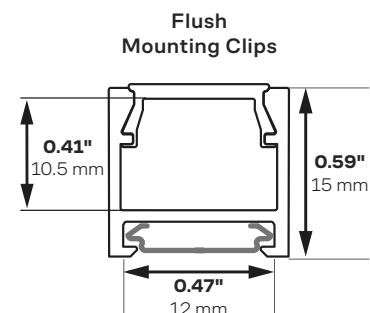
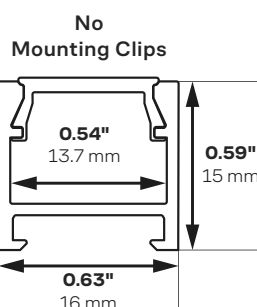
Frosted



Matte

Surface mount channel with a clean outer appearance as the result of its system that uses clips and connectors that mount on the bottom of the extrusion. Obtain beautiful diffusion with our matte lens and any of our white strips.

For more information about compatibility with our LED strips and Connectors, please refer to our compatibility charts below.



Product Description	Product SKU	Included Accessories
Kepler™ Channel Kit with Clear Cover and Accessories	KEP-CH-A-CVR-C-1M	1M Channel, 1M Clear Cover, 1 Accessory Pack
Kepler™ Channel Kit with Frosted Cover and Accessories	KEP-CH-A-CVR-F-1M	1M Channel, 1M Frosted Cover, 1 Accessory Pack
Kepler™ Channel Kit with Matte Cover and Accessories	KEP-CH-A-CVR-M-1M	1M Channel, 1M Matte Cover, 1 Accessory Pack
Kepler™ Accessory Pack	KEP-EC-CLP-KIT	2 Open End Caps, 2 Closed End Caps, 4 Mounting Clips

# Laika™ Mounting Channel Kit

## Surface Installation



### Mounting Type



Surface Mount

### Beam Angle



110°

### Cover Type



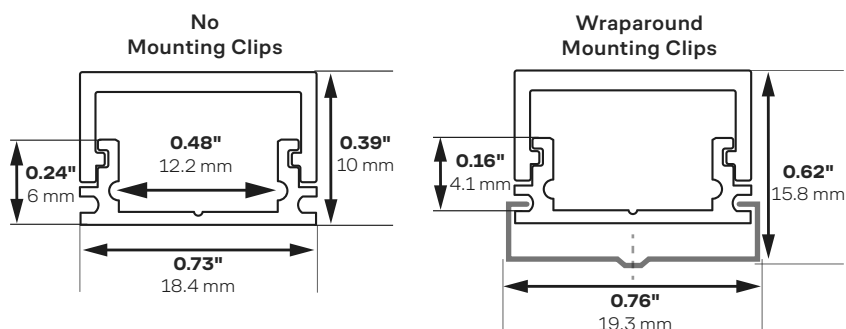
Clear



Frosted

Surface mount channel with wrap-around lens used to maintain a low profile with a couple of cover options for diffusing the light.

For more information about compatibility with our LED strips and Connectors, please refer to our compatibility charts below.



Product Description	Product SKU	Included Accessories
Laika™ Channel Kit with Clear Cover and Accessories	LAI-CH-A-CVR-C-1M	1M Channel, 1M Clear Cover, 1 Accessory Pack
Laika™ Channel Kit with Frosted Cover and Accessories	LAI-CH-A-CVR-F-1M LAI-CH-A-CVR-F-2M	1M Channel, 1M Frosted Cover, 1 Accessory Pack 2M Channel, 2M Frosted Cover, 1 Accessory Pack
Laika™ Accessory Pack	LAI-EC-CLP-KIT	2 Open End Caps, 2 Closed End Caps, 4 Mounting Clips

# Titan™

## Mounting Channel Kit

### Surface Installation



#### Mounting Type



Surface Mount

#### Beam Angle



95°

#### Cover Type



Clear



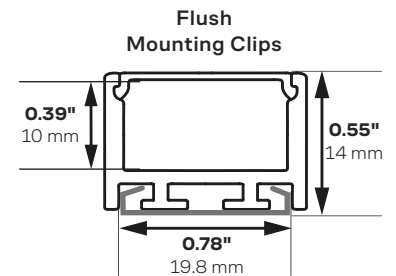
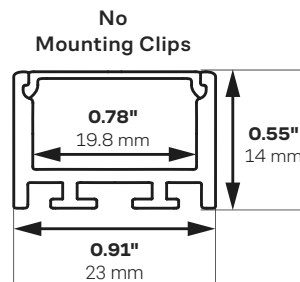
Frosted



Matte

Surface mount channel, with the ability to be adapted into a pendant. This channel is compatible with all of our strips and all of our solderless connectors. Covers are available in three different diffusion levels.

For more information about compatibility with our LED strips and Connectors, please refer to our compatibility charts below.



Product Description	Product SKU	Included Accessories
Titan™ Channel Kit with Clear Cover and Accessories	TTN-CH-A-CVR-C-1M	1M Channel, 1M Clear Cover, 1 Accessory Pack
Titan™ Channel Kit with Frosted Cover and Accessories	TTN-CH-A-CVR-F-1M	1M Channel, 1M Frosted Cover, 1 Accessory Pack
	TTN-CH-A-CVR-F-2M	2M Channel, 2M Frosted Cover, 1 Accessory Pack
	TTN-CH-A-CVR-F-10MR	10 x 1M Channels, 1 x 10M Frosted Rollable Cover, 5 Accessory Packs
Titan™ Channel Kit with Matte Cover and Accessories	TTN-CH-A-CVR-M-1M	1M Channel, 1M Frosted Cover, 1 Accessory Pack
	TTN-CH-A-CVR-M-2M	2M Channel, 2M Frosted Cover, 1 Accessory Pack
	TTN-CH-A-CVR-M-10MR	10 x 1M Channels, 1 x 10M Frosted Rollable Cover, 5 Accessory Packs
Titan™ Accessory Pack	TTN-EC-CLP-KIT	2 Open End Caps, 2 Closed End Caps, 4 Mounting Clips, 2 Straight Connectors, 2 Vertical 90° Connectors, 2 Horizontal 90° Connectors
Titan™ Pendant Kit	TTN-PND-KIT	2 x 1M Pendant Mounts with Screws

# Atlas™ Mounting Channel Kit

## Angled Surface Mount



### Mounting Type



Angled  
Surface Mount

### Beam Angle



125°

### Cover Type



Clear



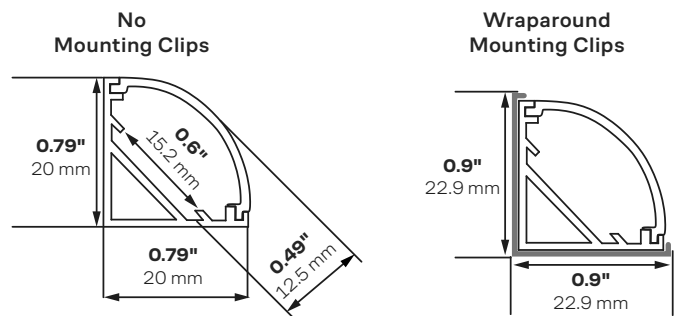
Frosted



Matte

Surface mount channel with a 45-degree perfect for throwing light into spaces such as backsplashes or rafter beams, and wall washing applications. Three cover options are available for this channel, offering up to full diffusion when paired with some of our LED strip lights.

For more information about compatibility with our LED strips and connectors, please refer to our compatibility charts below.



Product Description	Product SKU	Included Accessories
Atlas™ Channel Kit with Clear Cover and Accessories	ATL-CH-A-CVR-C-1M	1M Channel, 1M Clear Cover, 1 Accessory Pack
Atlas™ Channel Kit with Frosted Cover and Accessories	ATL-CH-A-CVR-F-1M ATL-CH-A-CVR-F-2M	1M Channel, 1M Frosted Cover, 1 Accessory Pack 2M Channel, 2M Frosted Cover, 1 Accessory Pack
Atlas™ Channel Kit with Matte Cover and Accessories	ATL-CH-A-CVR-M-1M ATL-CH-A-CVR-M-2M	1M Channel, 1M Matte Cover, 1 Accessory Pack 2M Channel, 2M Matte Cover, 1 Accessory Pack
Atlas™ Accessory Pack	ATL-EC-CLP-KIT	2 Open End Caps, 2 Closed End Caps, 4 Mounting Clips

# Calypso™ Mounting Channel Kit

## Recessed Installation



### Mounting Type



Recessed Mount

### Beam Angle



95°

### Cover Type



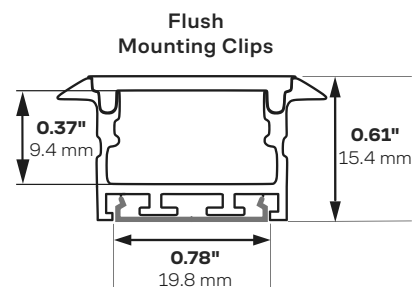
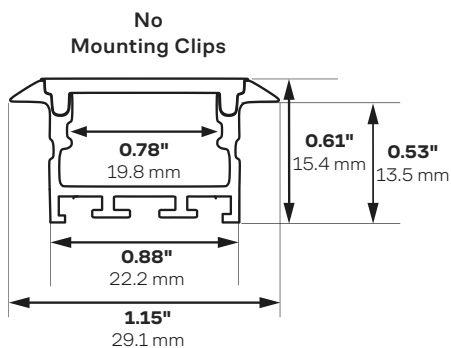
Frosted



Matte

Ideal channel for recessing strips into woodworking, cabinetry, and other installations. This channel is compatible with all of our strips and all of our solderless connectors. Covers are available in two different diffusion levels.

For more information about compatibility with our LED strips and Connectors, please refer to our compatibility charts below.

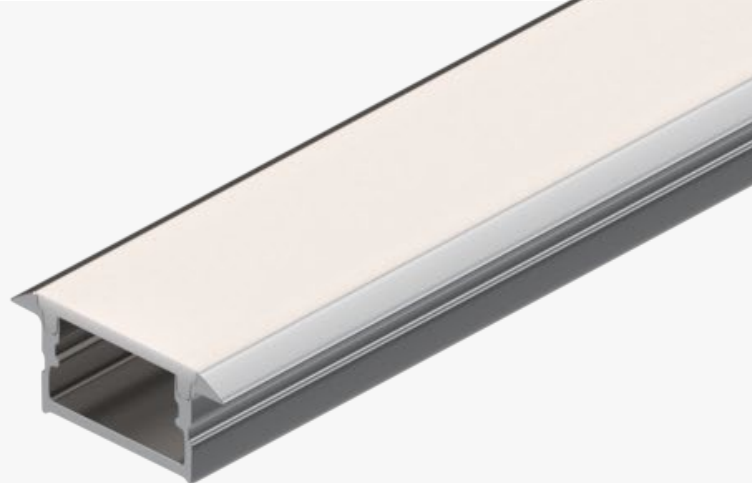


Product Description	Product SKU	Included Accessories
Calypso™ Channel Kit with Frosted Cover and Accessories	CAL-CH-A-CVR-F-1M	1M Channel, 1M Frosted Cover, 1 Accessory Pack
	CAL-CH-A-CVR-F-2M	2M Channel, 2M Frosted Cover, 1 Accessory Pack
	CAL-CH-A-CVR-F-10MR	10 x 1M Channels, 1 x 10M Frosted Rollable Cover, 5 Accessory Packs
Calypso™ Channel Kit with Matte Cover and Accessories	CAL-CH-A-CVR-M-1M	1M Channel, 1M Matte Cover, 1 Accessory Pack
	CAL-CH-A-CVR-M-2M	2M Channel, 2M Matte Cover, 1 Accessory Pack
	CAL-CH-A-CVR-M-10MR	10 x 1M Channels, 1 x 10M Matte Rollable Cover, 5 Accessory Packs
Calypso™ Accessory Pack	CAL-EC-CLP-KIT	2 Open End Caps, 2 Closed End Caps, 4 Mounting Clips, 2 Straight Connectors, 2 Vertical 90° Connectors, 2 Horizontal 90° Connectors



# Cassini™ Mounting Channel Kit

## Recessed Installation



### Mounting Type



Recessed Mount

### Beam Angle



80°

### Cover Type



Clear



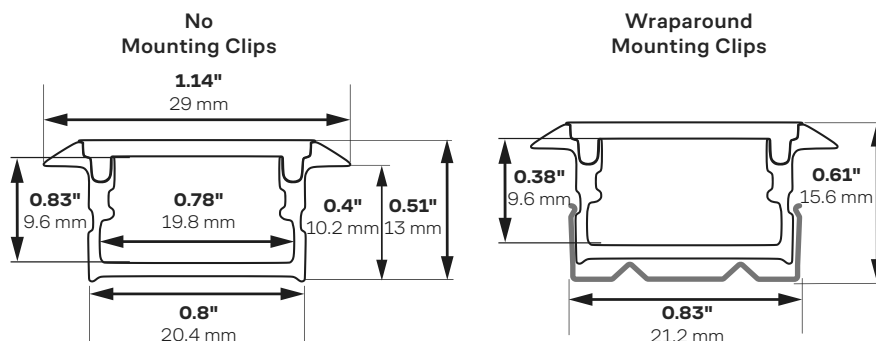
Frosted



Matte

Ideal channel for recessing strips into woodworking, cabinetry, and other installations. Not for use with products that exceed 4.4 W/ft.

For more information about compatibility with our LED strips and Connectors, please refer to our compatibility charts below.



Product Description	Product SKU	Included Accessories
Cassini™ Channel Kit with Clear Cover and Accessories	CAS-CH-A-CVR-C-1M	1M Channel, 1M Clear Cover, 1 Accessory Pack
Cassini™ Channel Kit with Frosted Cover and Accessories	CAS-CH-A-CVR-F-1M CAS-CH-A-CVR-F-2M	1M Channel, 1M Frosted Cover, 1 Accessory Pack 2M Channel, 2M Frosted Cover, 1 Accessory Pack
Cassini™ Channel Kit with Matte Cover and Accessories	CAS-CH-A-CVR-M-1M CAS-CH-A-CVR-M-2M	1M Channel, 1M Matte Cover, 1 Accessory Pack 2M Channel, 2M Matte Cover, 1 Accessory Pack
Cassini™ Accessory Pack	CAS-EC-CLP-KIT	2 Open End Caps, 2 Closed End Caps, 4 Mounting Clips

# Diffusion Chart

## Mounting Channels

		Ion™	Gemini™		Kepler™		Laika™		Titan™		Atlas™		Calypso™		Cassini™	
LED Strip	Cover Type		Frosted	Matte	Frosted	Matte	Frosted	Matte	Frosted	Matte	Frosted	Matte	Frosted	Matte	Frosted	Matte
Outline™ Series		-	Partial	Full	Partial	Full	Partial	Partial	Partial	Full	Full	Full	Partial	Full	Partial	Full
Accent™ Series		-	Partial	Full	Partial	Full	Partial	Partial	Partial	Full	Partial	Full	Partial	Full	Partial	Full
Architectural™ Series		-	Full	Full	Full	Full	Full	Full	Partial	Partial	Partial	Full	Partial	Partial	Full	Full
Render™ Series		-	Full	Full	Full	Full	Partial	Partial	Full	Partial	Full	Full	Full	Partial	Full	Full
Industrial™ Series		-	Full	Full	Full	Full	Full	Full	Full	Partial	Full	Full	Full	Partial	Full	Full
Accent™ Tunable White Series		-	Minimal	Minimal	Minimal	Minimal	Minimal	Minimal	Minimal	Full	Minimal	Minimal	Minimal	Full	Minimal	Minimal
Architectural™ Tunable White Series		-	Partial	Partial	Partial	Partial	Minimal	Partial	Minimal	Partial	Minimal	Minimal	Minimal	Partial	Partial	Partial
Sienna™ Dim-to-Warm Series		-	Partial	Full	Partial	Partial	Partial	Partial	Minimal	Minimal	Minimal	Partial	Minimal	Minimal	Partial	Partial
RGB 150 Series		-	Minimal	Minimal	Minimal	Minimal	Minimal	Minimal	Minimal	Minimal	Minimal	Minimal	Minimal	Minimal	Minimal	Minimal
RGB 300 Series		-	Minimal	Partial	Partial	Partial	Minimal	Minimal	Minimal	Minimal	Minimal	Minimal	Minimal	Minimal	Partial	Partial
RGB 600 Series		-	Partial	Full	Partial	Full	Partial	Partial	Minimal	Partial	Partial	Full	N/A	N/A	N/A	N/A
RGB Digital Pixel Series		-	Minimal	Minimal	Minimal	Minimal	Minimal	Minimal	Minimal	Partial	Minimal	Minimal	Minimal	Partial	Minimal	Minimal
RGBW Series		-	Minimal	Minimal	Minimal	Minimal	Minimal	Minimal	Minimal	Minimal	Minimal	Minimal	Minimal	Minimal	Minimal	Minimal
RGB + Tunable White Series		-	Partial	Partial	Partial	Partial	Minimal	Minimal	Minimal	Partial	Minimal	Minimal	Minimal	Partial	Minimal	Minimal

**90-100%** → Full Diffusion  
**50-89%** → Partial Diffusion  
**Below 49%** → Minimal Diffusion

# Compatibility Chart

Mounting Channels +  
Indoor IP20 Tape Lights

Tape Light \ Channels	Ion™	Gemini™	Kepler™	Laika™	Titan™	Atlas™	Calypso™	Cassini™
Outline™ Series	●	●	▲	▲	●	●	●	●
Accent™ Series	●	●	▲	▲	●	●	●	●
Architectural™ Series	●	●	▲	▲	●	●	●	●
Render™ Series	●	●	▲	▲	●	●	-	-
Industrial™ Series	●	●	▲	▲	●	●	-	-
Accent™ Tunable White Series	●	●	▲	▲	●	●	●	●
Architectural™ Tunable White Series	●	●	▲	▲	●	●	●	●
Sienna™ Dim-to-Warm Series	●	●	▲	▲	●	●	●	●
Vivid™ Color Series	●	●	▲	▲	●	●	●	●
RGB 150 Series	●	●	▲	▲	●	●	●	●
RGB 300 Series	●	●	▲	▲	●	●	●	●
RGB 600 Series	●	●	▲	▲	●	●	-	-
RGB Digital Pixel Series	●	●	▲	▲	●	●	●	●
RGBW Series	●	▲	▲	▲	●	▲	●	▲
RGB + Tunable White Series	●	▲	▲	▲	●	▲	●	▲

▲ Compatible with soldered leads only

● Compatible with solderless connectors

# Compatibility Chart

## Mounting Channels + Outdoor IP65 Tape Lights

Outdoor Tape Light	Channels	Ion™	Gemini™	Kepler™	Laika™	Titan™	Atlas™	Calypso™	Cassini™
Outline™ Series		●	▲	▲	▲	●	▲	●	▲
Accent™ Series		●	▲	▲	▲	●	▲	●	▲
Architectural™ Series		●	▲	▲	▲	●	▲	●	▲
Sienna™ Series		●	▲	▲	▲	●	▲	●	▲
Accent™ Tunable White Series		●	▲	▲	▲	●	▲	●	▲
Architectural™ Tunable White Series		●	▲	▲	▲	●	▲	●	▲
Vivid™ Color Series		●	▲	▲	▲	●	▲	●	▲
RGB 150 Series		●	▲	▲	▲	●	▲	●	▲
RGB 300 Series		●	▲	▲	▲	●	▲	●	▲
RGB 600 Series		●	▲	▲	▲	●	▲	-	-
RGB Digital Pixel Series		●	▲	▲	▲	●	▲	●	▲
RGBW Series		●	▲	-	-	▲	▲	▲	-
RGB + Tunable White Series		●	▲	-	-	▲	▲	▲	-

- ▲ Compatible with soldered leads only
- Compatible with solderless connectors

# Compatibility Chart

## Mounting Channels + Solderless Connectors

Solderless Connector \ Channels	Ion™	Gemini™	Kepler™	Laika™	Titan™	Atlas™	Calypso™	Cassini™
Single Color GRIP Connectors (8 mm)	●	●	●	-	●	●	●	●
Single Color GRIP Connectors (10 mm)	●	●	-	-	●	●	●	●
Tunable White GRIP Connectors	●	●	-	-	●	●	●	●
RGB GRIP Connectors	●	●	-	-	●	●	●	●
RGBW GRIP Connectors	●	-	-	-	●	-	●	-
RGB + Tunable White GRIP Connectors	●	-	-	-	●	-	●	-
Outdoor IP65 Single Color Grip Connectors	●	-	-	-	●	-	●	-
Outdoor IP65 Tunable White Grip Connectors	●	-	-	-	●	-	●	-
Outdoor IP65 RGB Grip Connectors	●	-	-	-	●	-	●	-
Outdoor IP65 RGBW GRIP Connectors	●	-	-	-	-	-	-	-
Outdoor IP65 RGB + Tunable White GRIP Connectors	●	-	-	-	-	-	-	-

● Compatible with solderless connectors

### NOTES:

- Corner connectors are not compatible with aluminum channels other than Ion channel
- When using IP65-rated LED strip lights, and connectors, please avoid the accumulation of water or fluids inside the channel

# Warranty Information

## Limited Warranty

This product has a 6 year limited warranty from the date of shipment. This warranty only includes the main product outlined in this specification sheet and does not include the additional accessories that are used as a reference. Complete warranty details for fixtures and additional accessories are available at <https://www.flexfireleds.com/warranties/> within the Policies section. For warranty related questions please contact the product support team at ([support@flexfireleds.com](mailto:support@flexfireleds.com)).


## Consumer's Acknowledgment


Flexfire LEDs, Inc. stands behind its products when they are used properly and according to our specifications. When you purchase our products, you are agreeing to the terms and conditions outlined in our warranty section. We try our best to make recommendations, but the burden of proper installation, design, and maintenance relies on the purchaser. This limited warranty does not include product failures that are the result of: Not using a voltage regulated power supply to connect the LED product or controls; Connecting LED products to the wrong output voltage; Improper connection of power supplies, LED products, or controls; Connecting LED products or controls directly to any AC power source if they are stated for DC only input; Connecting power supplies backwards to an AC power source; Products used in an inappropriate location or in environmental conditions (temperature, humidity, moisture, etc.) outside the normal specified range; Water damage to products not specifically sold as waterproof products; Electrical power surges and spikes; Damage from hail, flooding, tornado, fire, wind, earthquake, lightning, electrical storm, or any other natural disasters or "force majeure" incidences; Damage caused by a vehicle or other accident; Damage caused when transporting the item; Damage to any products that were modified by the user, used for purposes other than as intended or directed, or connected to LED systems or components not purchased from Flexfire LEDs; Products that have been subjected to misuse, mishandling, misapplication or accident. Products used in connection with any components, devices or systems other than those explicitly approved as compatible with Company's products and listed on Company's website. Excessive wear and tear and/or physical or accidental abuse, loss, or theft. Improper repairs or warranty services performed by someone other than Flexfire LEDs will void this warranty.



[www.flexfireleds.com](http://www.flexfireleds.com)

 Toll Free Number: 1-844-353-9347

 Local Number: (925) 273-9080

 [info@flexfireleds.com](mailto:info@flexfireleds.com)