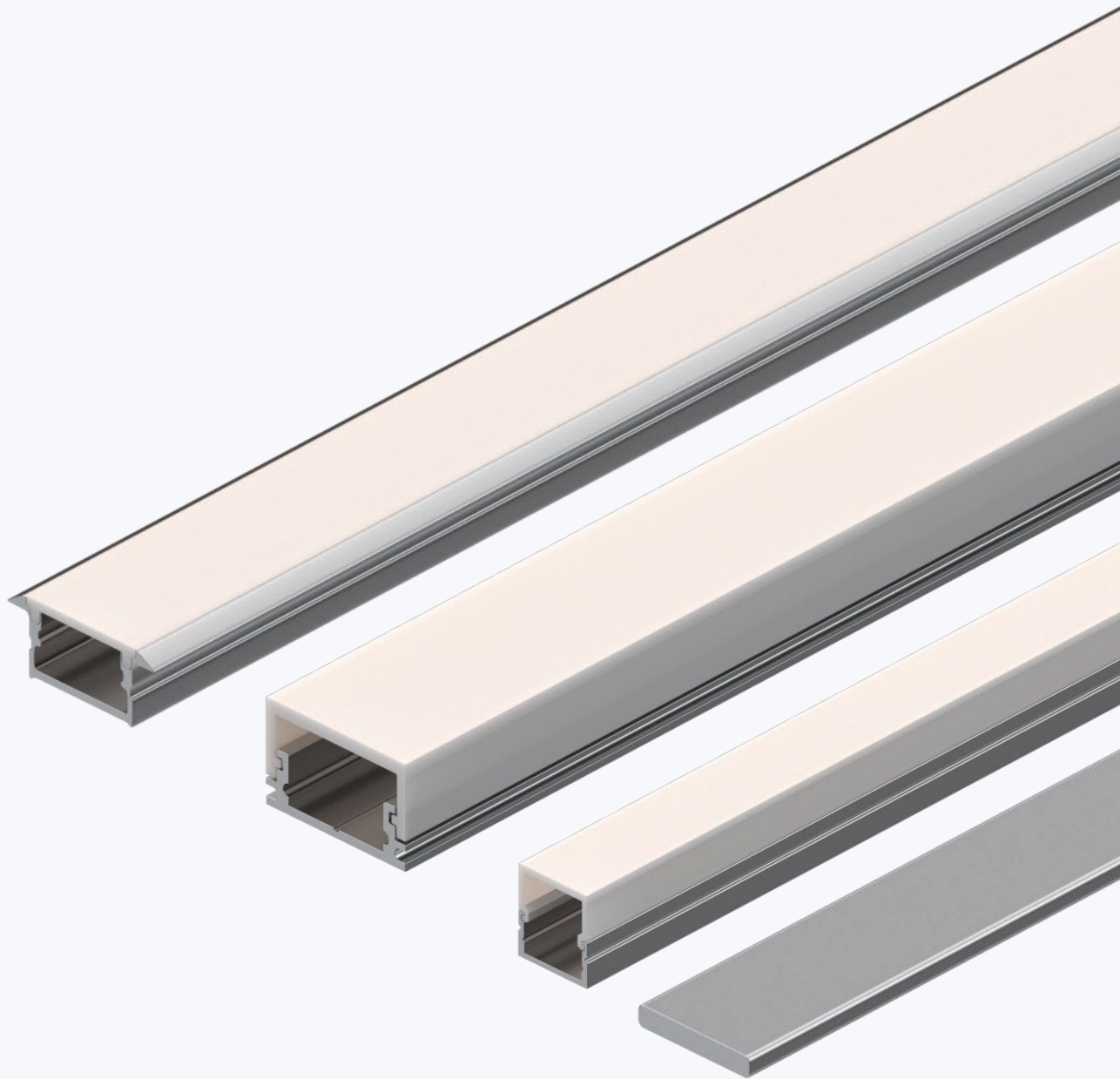


# Mounting Channels

---

Product Data Sheet



CE





## Description

Flexfire LEDs Mounting Channels are designed to ensure that your strip light lives a long life. By acting as a heat sink and providing a barrier from dust and debris, aluminum channels can extend the life of your strip light while also making maintenance simple. The channels are sold in kits and can be mounted on practically any flat surface to give your project the finished look it deserves.

## Features and Benefits

- We've packaged all components into a kit to include: Channel, cover, end caps, mounting clips and other accessories\*.
- Aluminum channels pull heat away from the strip light prolonging its lifespan.
- Most channels are available with different lens options so whether you need a crystal clear lens for maximum light output or a matte lens for premium diffusion, we've got you covered.

## Specifications

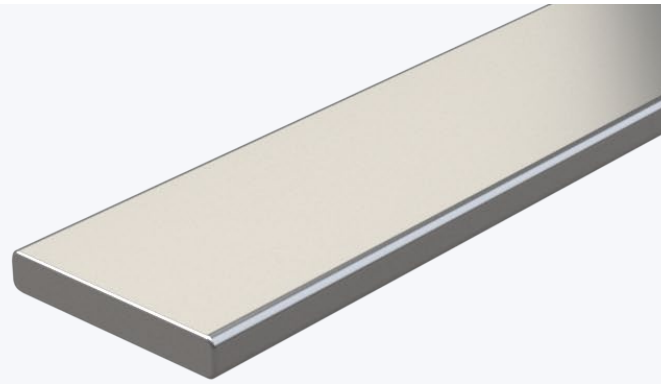
Channel Material	Aluminum
Color	Anodized Aluminum Finish
Cover Material	Polycarbonate
End Cap Material	PVC
Mounting Clip Material	Stainless Steel
Field Cuttable	Yes
Environment	Suitable for dry/damp location use
Warranty	6 Years

\*Included accessories vary for each aluminum channel. For more information about the included items and accessories, refer to each specific aluminum channel below.

# Ion™

## Mounting Channel Kit

### Heat Sink



#### Mounting Type

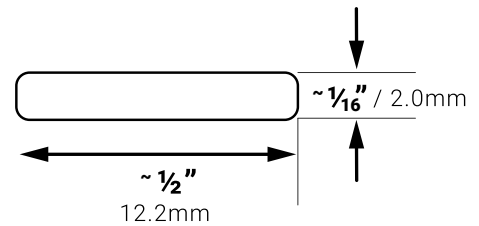


Surface Mount

#### Install Notes:

Surface mount channel for installers who just need a heat sink and nothing more. Adhered to a clean, flat surface with 3M Adhesive or drilled through the channel.

For more information about compatibility with our LED strips and Connectors, please refer to our compatibility charts below.

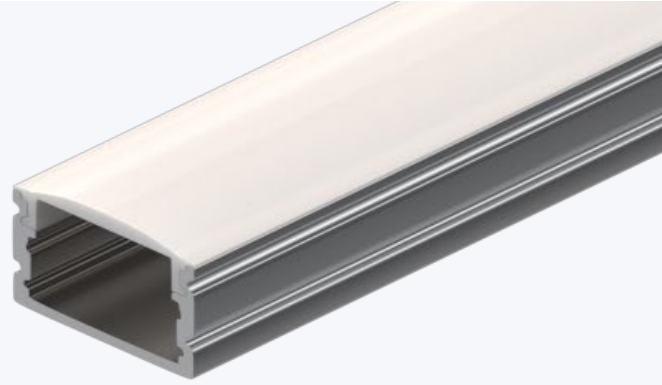


Product Description	Product SKU	Included Accessories
Ion™ Channel	ION-CH-A-1M	1M Channel
3M Adhesive Tape for Aluminum Channel	3M-TAPE-5915-33M	100 ft spool of 3M Adhesive 5915

# Gemini™

## Mounting Channel Kit

### Surface Installation



#### Mounting Type



Surface Mount

#### Beam Angle



80°

#### Cover Type



Clear

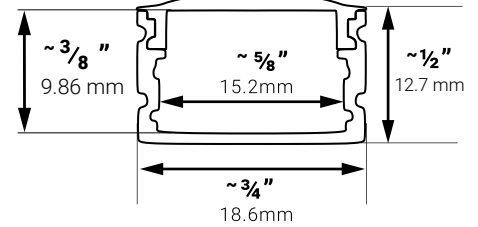


Frosted

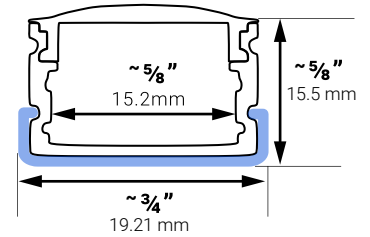


Matte

#### No Mounting Clips



#### Wraparound Mounting Clips



#### Install Notes:

Surface mount channel that fits most strips and connectors and offers excellent diffusion.

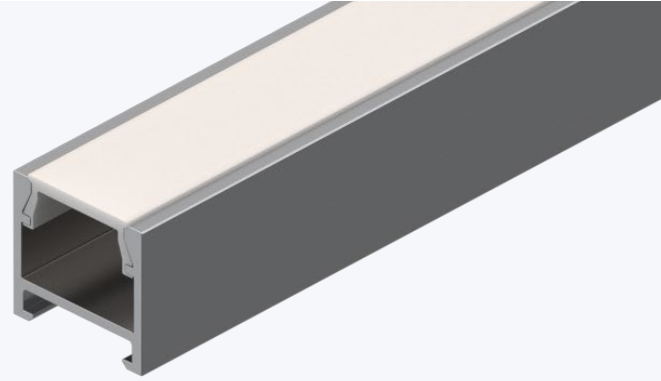
For more information about compatibility with our LED strips and Connectors, please refer to our compatibility charts below.

Product Description	Product SKU	Included Accessories
Gemini™ Channel Kit with Clear Cover and Accessories	GEM-CH-A-CVR-C-1M	1M Channel, 1M Clear Cover, 1 Accessory Pack
	GEM-CH-A-CVR-C-2M	2M Channel, 2M Clear Cover, 1 Accessory Pack
Gemini™ Channel Kit with Frosted Cover and Accessories	GEM-CH-A-CVR-F-1M	1M Channel, 1M Frosted Cover, 1 Accessory Pack
	GEM-CH-A-CVR-F-2M	2M Channel, 2M Frosted Cover, 1 Accessory Pack
Gemini™ Channel Kit with Matte Cover and Accessories	GEM-CH-A-CVR-M-1M	1M Channel, 1M Matte Cover, 1 Accessory Pack
	GEM-CH-A-CVR-M-2M	2M Channel, 2M Matte Cover, 1 Accessory Pack
Gemini™ Accessory Pack	GEM-EC-CLP-KIT	2 Open End Caps, 2 Closed End Caps, 4 Mounting Clips

# Kepler™

## Mounting Channel Kit

### Surface Installation



#### Mounting Type



Surface Mount

#### Beam Angle



60°

#### Cover Type



Clear

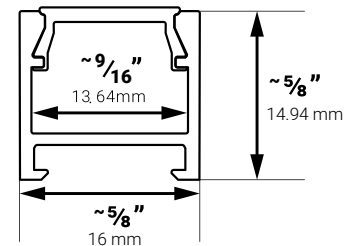


Frosted

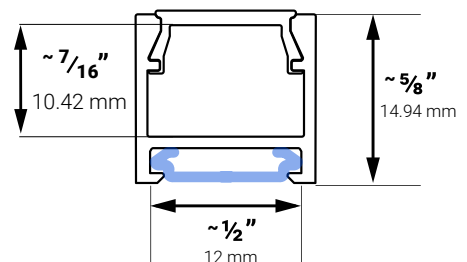


Matte

#### No Mounting Clips



#### Flush Mounting Clips



#### Install Notes:

Surface mount channel with a clean outer appearance as the result of its system that uses clips and connectors that mount on the bottom of the extrusion. Obtain beautiful diffusion with our matte lens and any of our white strips.

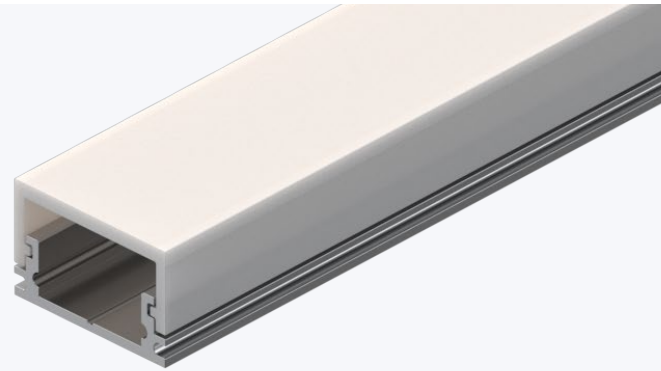
For more information about compatibility with our LED strips and Connectors, please refer to our compatibility charts below.

Product Description	Product SKU	Included Accessories
Kepler™ Channel Kit with Clear Cover and Accessories	KEP-CH-A-CVR-C-1M	1M Channel, 1M Clear Cover, 1 Accessory Pack
Kepler™ Channel Kit with Frosted Cover and Accessories	KEP-CH-A-CVR-F-1M	1M Channel, 1M Frosted Cover, 1 Accessory Pack
Kepler™ Channel Kit with Matte Cover and Accessories	KEP-CH-A-CVR-M-1M	1M Channel, 1M Matte Cover, 1 Accessory Pack
Kepler™ Accessory Pack	KEP-EC-CLP-KIT	2 Open End Caps, 2 Closed End Caps, 4 Mounting Clips

# Laika™

## Mounting Channel Kit

### Surface Installation



#### Mounting Type



Surface Mount

#### Beam Angle



110°

#### Cover Type



Clear

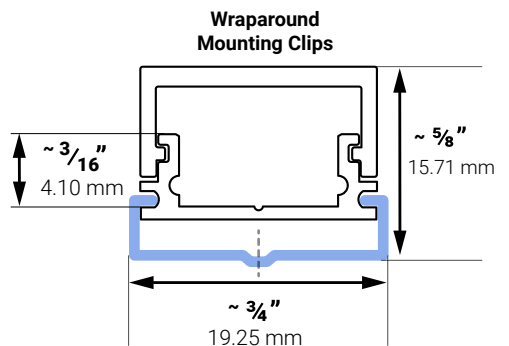
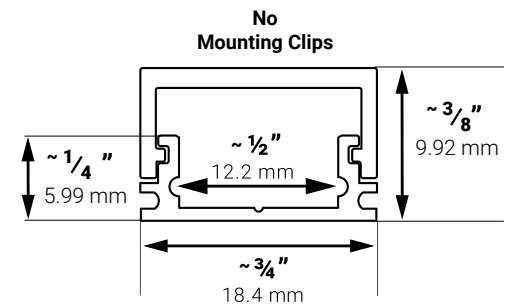


Frosted

#### Install Notes:

Surface mount channel with wrap around lens used to maintain a low profile with a variety of diffusion options.

For more information about compatibility with our LED strips and Connectors, please refer to our compatibility charts below.

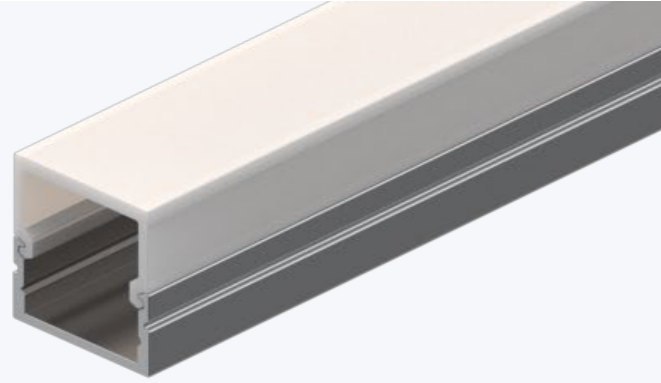


Product Description	Product SKU	Included Accessories
Laika™ Channel Kit with Clear Cover and Accessories	LAI-CH-A-CVR-C-1M	1M Channel, 1M Clear Cover, 1 Accessory Pack
Laika™ Channel Kit with Frosted Cover and Accessories	LAI-CH-A-CVR-F-1M LAI-CH-A-CVR-F-2M	1M Channel, 1M Frosted Cover, 1 Accessory Pack 2M Channel, 2M Frosted Cover, 1 Accessory Pack
Laika™ Accessory Pack	LAI-EC-CLP-KIT	2 Open End Caps, 2 Closed End Caps, 4 Mounting Clips

# Nova™

## Mounting Channel Kit

### Surface Installation



#### Mounting Type



Surface Mount

#### Beam Angle



80°

#### Cover Type

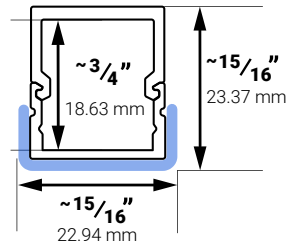


Clear

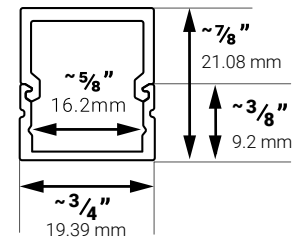


Matte

#### Wraparound Mounting Clips



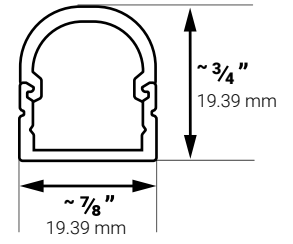
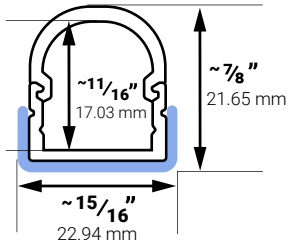
#### No Mounting Clips



#### Install Notes:

Surface mount channel that can be installed with either a round or square lens, both of which provide excellent diffusion options in the matte finish.

For more information about compatibility with our LED strips and Connectors, please refer to our compatibility charts below.



Product Description	Product SKU	Included Accessories
Nova™ Channel Kit with Clear Round Cover and Accessories	NOV-CH-A-CVR-C-RD-1M	1M Channel, 1M Clear Round Cover, 1 Accessory Pack
Nova™ Channel Kit with Matte Round Cover and Accessories	NOV-CH-A-CVR-M-RD-1M	1M Channel, 1M Matte Round Cover, 1 Accessory Pack
Nova™ Channel Kit with Clear Square Cover and Accessories	NOV-CH-A-CVR-C-SQ-1M	1M Channel, 1M Clear Square Cover, 1 Accessory Pack
Nova™ Channel Kit with Matte Square Cover and Accessories	NOV-CH-A-CVR-M-SQ-1M	1M Channel, 1M Matte Square Cover, 1 Accessory Pack
Nova™ Round Accessory Pack	NOV-EC-RD-CLP-KIT	2 Open Round End Caps, 2 Closed Round End Caps, 4 Mounting Clips
Nova™ Square Accessory Pack	NOV-EC-SQ-CLP-KIT	2 Open Square End Caps, 2 Closed Square End Caps, 4 Mounting Clips



# Titan™

## Mounting Channel Kit

### Surface Installation



#### Mounting Type



Surface Mount

#### Beam Angle



95°

#### Cover Type



Clear



Frosted



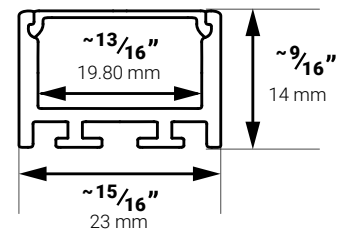
Matte

#### Install Notes:

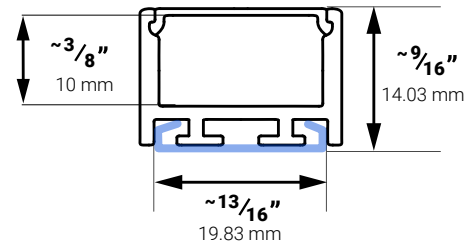
Surface mount channel, with the ability to be adapted into a pendant. This channel is compatible with all of our strips and all of our solderless connectors. Covers are available in three different diffusion levels.

For more information about compatibility with our LED strips and Connectors, please refer to our compatibility charts below.

#### No Mounting Clips



#### Flush Mounting Clips



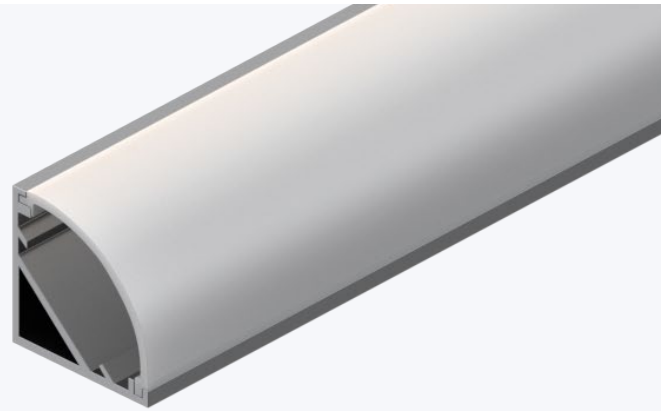
Product Description	Product SKU	Included Accessories
Titan™ Channel Kit with Clear Cover and Accessories	TTN-CH-A-CVR-C-1M	1M Channel, 1M Clear Cover, 1 Accessory Pack
Titan™ Channel Kit with Frosted Cover and Accessories	TTN-CH-A-CVR-F-1M TTN-CH-A-CVR-F-2M TTN-CH-A-CVR-F-10MR	1M Channel, 1M Frosted Cover, 1 Accessory Pack 2M Channel, 2M Frosted Cover, 1 Accessory Pack 10 x 1M Channels, 1 x 10M Frosted Rollable Cover, 5 Accessory Packs
Titan™ Channel Kit with Matte Cover and Accessories	TTN-CH-A-CVR-M-1M TTN-CH-A-CVR-M-2M TTN-CH-A-CVR-M-10MR	1M Channel, 1M Matte Cover, 1 Accessory Pack 2M Channel, 2M Matte Cover, 1 Accessory Pack 10 x 1M Channels, 1 x 10M Matte Rollable Cover, 5 Accessory Packs
Titan™ Accessory Pack	TTN-EC-CLP-KIT	2 Open End Caps, 2 Closed End Caps, 4 Mounting Clips, 2 Straight Connectors, 2 Vertical 90° Connectors, 2 Horizontal 90° Connectors
Titan™ Pendant Kit	TTN-PND-KIT	2 Pendant Mounts with Screws



# Atlas™

## Mounting Channel Kit

### Angled Surface Mount



#### Mounting Type



Angled  
Surface Mount

#### Beam Angle



125°

#### Cover Type



Clear



Frosted

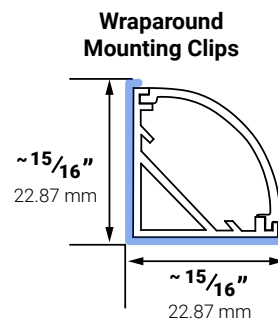
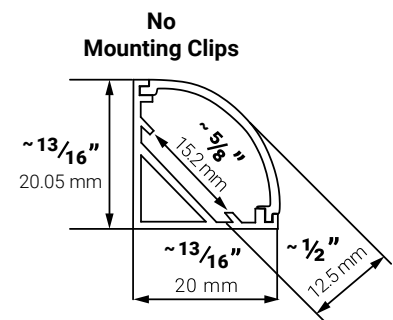


Matte

#### Install Notes:

Surface mount channel with a 45-degree perfect for throwing light into spaces such as backsplashes or rafter beams, and wall washing applications. Three cover options are available for this channel, offering up to full diffusion when paired with some of our LED strip lights.

For more information about compatibility with our LED strips and Connectors, please refer to our compatibility charts below.

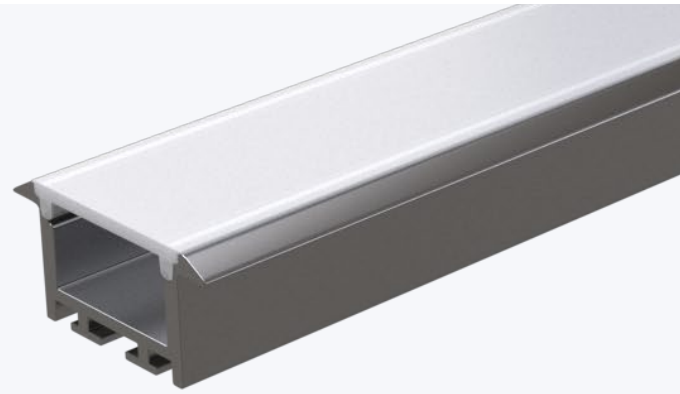


Product Description	Product SKU	Included Accessories
Atlas™ Channel Kit with Clear Cover and Accessories	ATL-CH-A-CVR-C-1M	1M Channel, 1M Clear Cover, 1 Accessory Pack
Atlas™ Channel Kit with Frosted Cover and Accessories	ATL-CH-A-CVR-F-1M ATL-CH-A-CVR-F-2M	1M Channel, 1M Frosted Cover, 1 Accessory Pack 2M Channel, 2M Frosted Cover, 1 Accessory Pack
Atlas™ Channel Kit with Matte Cover and Accessories	ATL-CH-A-CVR-M-1M ATL-CH-A-CVR-M-2M	1M Channel, 1M Matte Cover, 1 Accessory Pack 2M Channel, 2M Matte Cover, 1 Accessory Pack
Atlas™ Accessory Pack	ATL-EC-CLP-KIT	2 Open End Caps, 2 Closed End Caps, 4 Mounting Clips

# Calypso™

## Mounting Channel Kit

### Recessed Installation



#### Mounting Type



Recessed Mount

#### Beam Angle



95°

#### Cover Type



Frosted



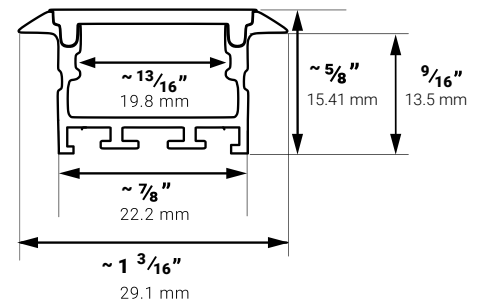
Matte

#### Install Notes:

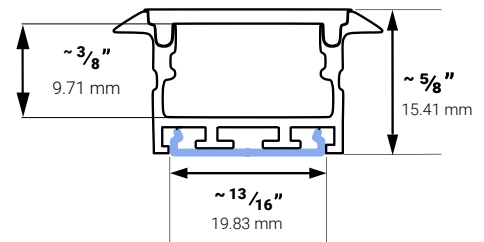
Ideal channel for recessing strips into woodworking, cabinetry, and other installations. This channel is compatible with all of our strips and all of our solderless connectors. Covers are available in two different diffusion levels.

For more information about compatibility with our LED strips and Connectors, please refer to our compatibility charts below.

#### No Mounting Clips



#### Flush Mounting Clips

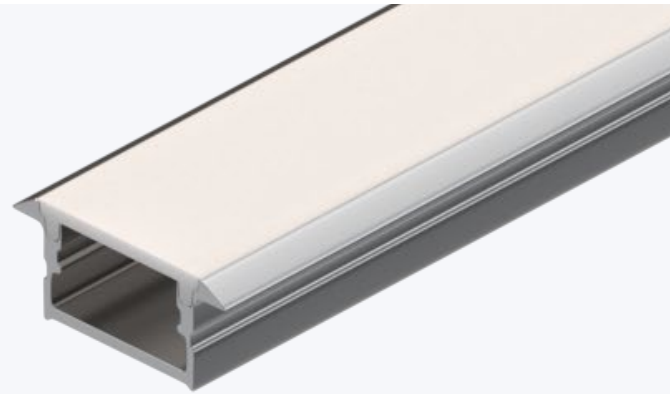


Product Description	Product SKU	Included Accessories
Calypso™ Channel Kit with Frosted Cover and Accessories	CAL-CH-A-CVR-F-1M CAL-CH-A-CVR-F-2M CAL-CH-A-CVR-F-10MR	1M Channel, 1M Frosted Cover, 1 Accessory Pack 2M Channel, 2M Frosted Cover, 1 Accessory Pack 10 x 1M Channels, 1 x 10M Frosted Rollable Cover, 5 Accessory Packs
Calypso™ Channel Kit with Matte Cover and Accessories	CAL-CH-A-CVR-M-1M CAL-CH-A-CVR-M-2M CAL-CH-A-CVR-M-10MR	1M Channel, 1M Matte Cover, 1 Accessory Pack 2M Channel, 2M Matte Cover, 1 Accessory Pack 10 x 1M Channels, 1 x 10M Matte Rollable Cover, 5 Accessory Packs
Calypso™ Accessory Pack	CAL-EC-CLP-KIT	2 Open End Caps, 2 Closed End Caps, 4 Mounting Clips, 2 Straight Connectors, 2 Vertical 90° Connectors, 2 Horizontal 90° Connectors

# Cassini™

## Mounting Channel Kit

### Recessed Installation



#### Mounting Type



Recessed Mount

#### Beam Angle



80°

#### Cover Type



Clear



Frosted



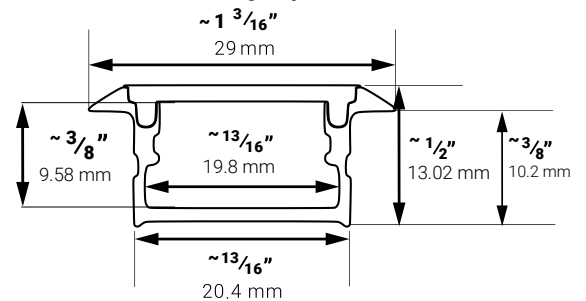
Matte

#### Install Notes:

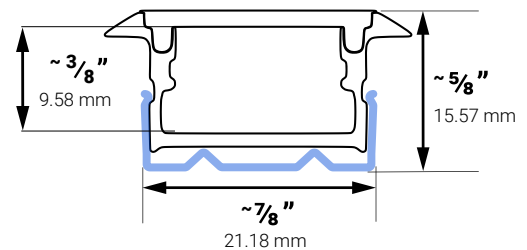
Ideal channel for recessing strips into woodworking, cabinetry, and other installations. Not for use with products that exceed 4.4 W/ft.

For more information about compatibility with our LED strips and Connectors, please refer to our compatibility charts below.

#### No Mounting Clips



#### Wraparound Mounting Clips

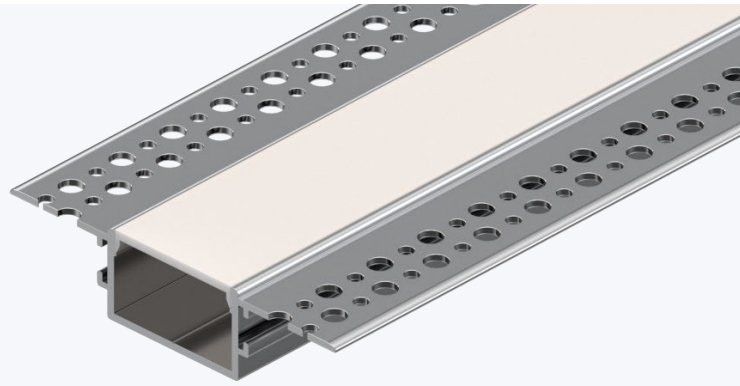


Product Description	Product SKU	Included Accessories
Cassini™ Channel Kit with Clear Cover and Accessories	CAS-CH-A-CVR-C-1M	1M Channel, 1M Clear Cover, 1 Accessory Pack
Cassini™ Channel Kit with Frosted Cover and Accessories	CAS-CH-A-CVR-F-1M CAS-CH-A-CVR-F-2M	1M Channel, 1M Frosted Cover, 1 Accessory Pack 2M Channel, 2M Frosted Cover, 1 Accessory Pack
Cassini™ Channel Kit with Matte Cover and Accessories	CAS-CH-A-CVR-M-1M CAS-CH-A-CVR-M-2M	1M Channel, 1M Matte Cover, 1 Accessory Pack 2M Channel, 2M Matte Cover, 1 Accessory Pack
Cassini™ Accessory Pack	CAS-EC-CLP-KIT	2 Open End Caps, 2 Closed End Caps, 4 Mounting Clips

# Phoenix™

## Mounting Channel Kit

### Recessed Installation



#### Mounting Type



Recessed Mount

#### Beam Angle



110°

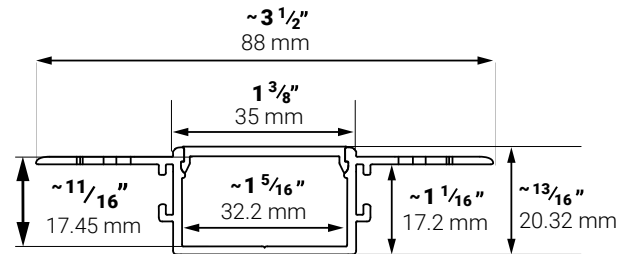
#### Cover Type



Frosted



Matte



#### Install Notes:

Mud-in channel perfect for applications where lights are to be recessed into the wall. This channel is made of aluminum and creates a beam angle of 110 degrees. It is compatible with all of our strips and all of our strip connectors. Available in two different diffusion levels (Frosted and Matte), this channel allows users to maintain a low profile while providing protection to your lights.

**Important:** Optimal diffusion achieved when using two pieces of strip light side-by-side.

For more information about compatibility with our LED strips and Connectors, please refer to our compatibility charts below.

Product Description	Product SKU	Included Accessories
Phoenix™ Channel Kit with Frosted Cover and Accessories	PHO-CH-A-CVR-F-1M	1M Channel, 1M Frosted Cover, 1 Accessory Pack
Phoenix™ Channel Kit with Matte Cover and Accessories	PHO-CH-A-CVR-M-1M	1M Channel, 1M Matte Cover, 1 Accessory Pack
Phoenix™ Accessory Pack	PHO-EC-CLP-KIT	2 Open End Caps, 2 Closed End Caps, 2 Straight Connectors, 2 Vertical 90° Connectors, 2 Horizontal 90° Connectors

# Diffusion Chart

## Mounting Channels

		Ion™		Gemini™		Kepler™		Laika™		Nova™		Titan™		Atlas™		Calypso™		Cassini™	
Cover Type	Led Strip		Frosted	Matte	Frosted	Matte	Frosted	Matte	Frosted	Matte	Frosted	Matte	Frosted	Matte	Frosted	Matte	Frosted	Matte	
		Outline™ Series	-	Partial	Full	Partial	Full	Partial	Full	Partial	Full	Partial	Full	Full	Full	Partial	Full	Partial	Full
Accent™ Series		-	Partial	Full	Partial	Full	Partial	Full	Partial	Full	Full	Partial	Full	Partial	Full	Partial	Full	Partial	Full
Architectural™ Series		-	Full	Full	Full	Full	Full	Full	Full	Full	Full	Partial	Partial	Partial	Full	Partial	Partial	Full	Full
Render™ Series		-	Full	Full	Full	Full	Partial	Partial	Full	Full	Full	Partial	Full	Full	Full	Full	Partial	Full	Full
Industrial™ Series		-	Full	Full	Full	Full	Full	Full	Full	Full	Full	Partial	Full	Full	Full	Full	Partial	Full	Full
Accent™ Tunable White Series		-	Minimal	Minimal	Minimal	Minimal	Minimal	Minimal	Minimal	Minimal	Minimal	Full	Minimal	Minimal	Minimal	Full	Minimal	Minimal	
Architectural™ Tunable White Series		-	Partial	Partial	Partial	Partial	Minimal	Partial	Full	Full	Minimal	Partial	Minimal	Minimal	Minimal	Partial	Partial	Partial	
Sienna™ Dim-to-Warm Series		-	Partial	Full	Partial	Partial	Partial	Partial	Full	Full	Minimal	Minimal	Minimal	Partial	Minimal	Minimal	Partial	Partial	
RGB 150 Series		-	Minimal	Minimal	Minimal	Minimal	Minimal	Minimal	Minimal	Minimal	Minimal	Minimal	Minimal	Minimal	Minimal	Minimal	Minimal	Minimal	
RGB 300 Series		-	Minimal	Partial	Partial	Partial	Minimal	Minimal	Full	Full	Minimal	Minimal	Minimal	Minimal	Minimal	Minimal	Partial	Partial	
RGB 600 Series		-	Partial	Full	Partial	Full	Partial	Partial	Full	Full	Minimal	Partial	Partial	Full	N/A	N/A	N/A	N/A	
RGB Digital Pixel Series		-	Minimal	Minimal	Minimal	Minimal	Minimal	Minimal	Minimal	Minimal	Minimal	Partial	Minimal	Minimal	Minimal	Partial	Minimal	Minimal	
RGBW Series		-	Minimal	Minimal	Minimal	Minimal	Minimal	Minimal	Minimal	Minimal	Minimal	Minimal	Minimal	Minimal	Minimal	Minimal	Minimal	Minimal	
RGB + Tunable White Series		-	Partial	Partial	Partial	Partial	Minimal	Minimal	Full	Full	Minimal	Partial	Minimal	Minimal	Minimal	Partial	Minimal	Minimal	

90-100% → Full Diffusion  
 50-89% → Partial Diffusion  
 Below 49% → Minimal Diffusion

# Compatibility Chart

## Mounting Channels + Indoor IP20 Tape Lights

Tape Light \ Channels	Ion™	Gemini™	Kepler™	Laika™	Nova™	Titan™	Atlas™	Calypso™	Cassini™
Outline™ Series	●	●	▲	▲	●	●	●	●	●
Accent™ Series	●	●	▲	▲	●	●	●	●	●
Architectural™ Series	●	●	▲	▲	●	●	●	●	●
Render™ Series	●	●	▲	▲	●	●	●	-	-
Industrial™ Series	●	●	▲	▲	●	●	●	-	-
Accent™ Tunable White Series	●	●	▲	▲	●	●	●	●	●
Architectural™ Tunable White Series	●	●	▲	▲	●	●	●	●	●
Sienna™ Dim-to-Warm Series	●	●	▲	▲	●	●	●	●	●
Vivid™ Color Series	●	●	▲	▲	●	●	●	●	●
RGB 150 Series	●	●	▲	▲	●	●	●	●	●
RGB 300 Series	●	●	▲	▲	●	●	●	●	●
RGB 600 Series	●	●	▲	▲	●	●	●	-	-
RGB Digital Pixel Series	●	●	▲	▲	●	●	●	●	●
RGBW Series	●	▲	▲	▲	▲	●	▲	●	▲
RGB + Tunable White Series	●	▲	▲	▲	▲	●	▲	●	▲

- ▲ Compatible with soldered leads only
- Compatible with solderless connectors

# Compatibility Chart

## Mounting Channels + Outdoor IP65 Tape Lights

Outdoor Tape Light \ Channels	Ion™	Gemini™	Kepler™	Laika™	Nova™	Titan™	Atlas™	Calypso™	Cassini™
Outline™ Series	●	▲	▲	▲	▲	●	▲	●	▲
Accent™ Series	●	▲	▲	▲	▲	●	▲	●	▲
Architectural™ Series	●	▲	▲	▲	▲	●	▲	●	▲
Sienna™ Series	●	▲	▲	▲	▲	●	▲	●	▲
Accent™ Tunable White Series	●	▲	▲	▲	▲	●	▲	●	▲
Architectural™ Tunable White Series	●	▲	▲	▲	▲	●	▲	●	▲
Vivid™ Color Series	●	▲	▲	▲	▲	●	▲	●	▲
RGB 150 Series	●	▲	▲	▲	▲	●	▲	●	▲
RGB 300 Series	●	▲	▲	▲	▲	●	▲	●	▲
RGB 600 Series	●	▲	▲	▲	▲	●	▲	-	-
RGB Digital Pixel Series	●	▲	▲	▲	▲	●	▲	●	▲
RGBW Series	●	▲	-	-	▲	▲	▲	▲	-
RGB + Tunable White Series	●	▲	-	-	▲	▲	▲	▲	-



Compatible with soldered leads only



Compatible with solderless connectors



# Compatibility Chart

## Mounting Channels + Solderless Connectors

Solderless Connector \ Channels	Ion™	Gemini™	Kepler™	Laika™	Nova™	Titan™	Atlas™	Calypso™	Cassini™
Single Color GRIP Connectors (8 mm)	•	•	•	-	•	•	•	•	•
Single Color GRIP Connectors (10 mm)	•	•	-	-	•	•	•	•	•
Dynamic Tunable White GRIP Connectors	•	•	-	-	•	•	•	•	•
RGB GRIP Connectors	•	•	-	-	•	•	•	•	•
RGBW GRIP Connectors	•	-	-	-	-	•	-	•	-
RGB + Dynamic Tunable White GRIP Connectors	•	-	-	-	-	•	-	•	-
Outdoor IP65 Single Color Grip Connectors	•	-	-	-	-	•	-	•	-
Outdoor IP65 Dynamic Tunable White Grip Connectors	•	-	-	-	-	•	-	•	-
Outdoor IP65 RGB Grip Connectors	•	-	-	-	-	•	-	•	-
Outdoor IP65 RGBW GRIP Connectors	•	-	-	-	-	-	-	-	-

• Compatible with solderless connectors

### NOTES:

- Corner connectors are not compatible with aluminum channels other than Ion channel
- When using IP65-rated LED strip lights, and connectors, please avoid the accumulation of water or fluids inside the channel

## Safety And Disclosures

1. Installation must be in accordance with local and national electrical code regulations.
2. To ensure safety and correct installation, our strips are intended to be installed by a qualified, licensed electrician.
3. Only install with a Class 2 DC Constant Voltage LED driver to meet UL requirements.
4. Do not install in an environment where excessive heat may exist.
5. LED strip lights must be handled with care. Excessive handling, bending, and pressure may damage the product, voiding the warranty.
6. Do not install indoor LED tape light products in outdoor / wet location environments. Only use copper wiring. Use wires rated for at least 176°F (80°C) and certified for use with external connection of electrical equipment.
7. Each maximum run requires a dedicated power feed from the driver. Do not extend beyond the recommended maximum run length.
8. Make sure the appropriate gauge wire is installed between the driver, LEDs, and any dimmers. When choosing wire, calculate voltage drop, maximum amperage rating, and the location ratings on the wire. Improper wire selection and installation could overheat wires, and cause fire.
9. Do not modify the product beyond instructions or warranty will be void.
10. We reserve the right to modify and improve the design of our fixtures without prior notice. Although we try our best to order the same colors every time, due to changes in technology and phosphors over time, we cannot guarantee to match existing installed fixtures for subsequent orders or replacements in regards to product appearance, CCT, or lumen output.

## Warranty Information

### Limited Warranty

This product has a 6 year limited warranty from the date of shipment. This warranty only includes the main product outlined in this specification sheet and does not include the additional accessories that are used as a reference. Complete warranty details for fixtures and additional accessories are available at <https://www.flexfireleds.com/warranties/> within the Policies section. For warranty related questions please contact the product support team at ([support@flexfireleds.com](mailto:support@flexfireleds.com)).

### Consumer's Acknowledgment

Flexfire LEDs, Inc. stands behind its products when they are used properly and according to our specifications. When you purchase our products, you are agreeing to the terms and conditions outlined in our warranty section. We try our best to make recommendations, but the burden of proper installation, design, and maintenance relies on the purchaser. This limited warranty does not include product failures that are the result of: Not using a voltage regulated power supply to connect the LED product or controls; Connecting LED products to the wrong output voltage; Improper connection of power supplies, LED products, or controls; Connecting LED products or controls directly to any AC power source if they are stated for DC only input; Connecting power supplies backwards to an AC power source; Products used in an inappropriate location or in environmental conditions (temperature, humidity, moisture, etc.) outside the normal specified range; Water damage to products not specifically sold as waterproof products; Electrical power surges and spikes; Damage from hail, flooding, tornado, fire, wind, earthquake, lightning, electrical storm, or any other natural disasters or "force majeure" incidences; Damage caused by a vehicle or other accident; Damage caused when transporting the item; Damage to any products that were modified by the user, used for purposes other than as intended or directed, or connected to LED systems or components not purchased from Flexfire LEDs; Products that have been subjected to misuse, mishandling, misapplication or accident. Products used in connection with any components, devices or systems other than those explicitly approved as compatible with Company's products and listed on Company's website. Excessive wear and tear and/or physical or accidental abuse, loss, or theft. Improper repairs or warranty services performed by someone other than Flexfire LEDs will void this warranty.



**Toll Free Number:**  
1-844-353-9347



**support@FlexfireLEDs.com**