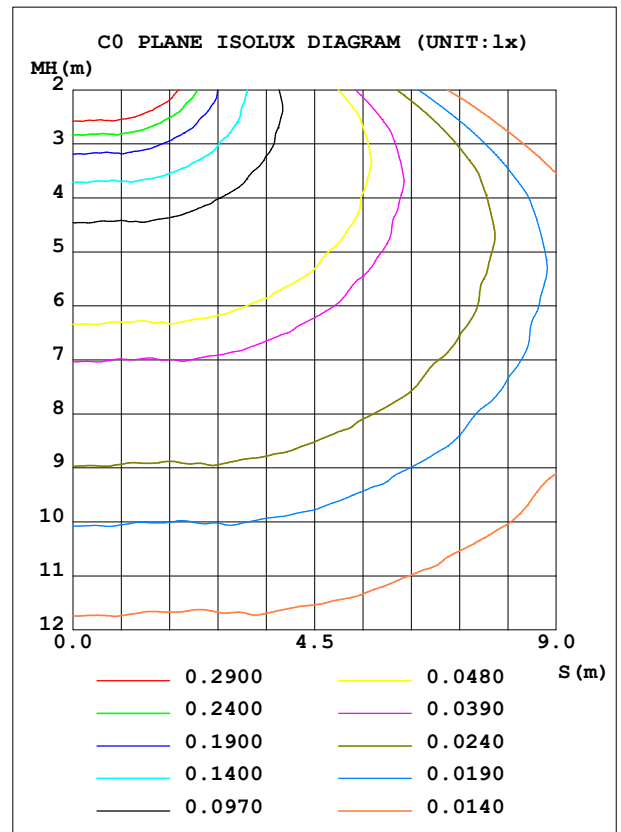
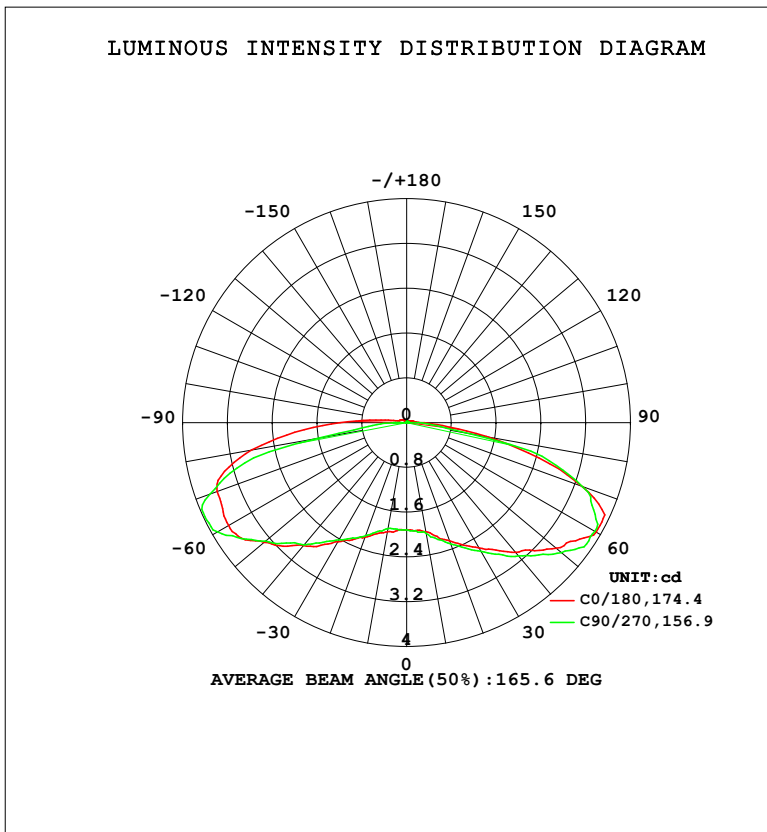


LUMINAIRE PHOTOMETRIC TEST REPORT

Test:U:12.000V I:0.0638A P:0.7656W PF:1.0000 Freq:50.00Hz Lamp Flux:18.1431x1 lm		
NAME: MOD-RGB	TYPE: LED Module	WEIGHT:
SPEC.: 0.72W	DIM.: 66*22*11 (MM)	SERIAL No.: 001
MFR.: Flexfire LEDs, Inc.	SUR.:	Shielding Angle: 160

DATA OF LAMP		PHOTOMETRIC DATA			
MODEL	MOD-RGB	Imax (cd)	4.169	S/MH	2.31
NOMINAL POWER (W)	0.72	LOR (%)	100.0		
RATED VOLTAGE (V)	12	TOTAL FLUX (lm)	18.143	<input type="checkbox"/> UP, DN (C0-180)	1.4, 47.7
NOMINAL FLUX (lm)	18.1431	CIE CLASS	DIRECT	<input type="checkbox"/> UP, DN (C180-360)	1.7, 49.1
LAMPS INSIDE	1	<input type="checkbox"/> up (%)	3.2	CIBSE SHR NOM	2.00
TEST VOLTAGE (V)	12	<input type="checkbox"/> down (%)	96.8	CIBSE SHR MAX	2.00



C Range: 0 - 360DEG  
 C Interval: 22.5DEG  
 Test Speed: HIGH  
 Temperature: 25.3DEG  
 Test Date: 2023-08-10

Range: 0 - 180DEG  
 Interval: 1.0DEG  
 Test System: EVERFINE GO-2000B\_V1 SYSTEM V2.00.454  
 Humidity: 65.0%  
 Test Distance: 6.020m [K=1.0000]  
 Remarks:

**ZONAL FLUX DIAGRAM**

ZONAL FLUX DIAGRAM:

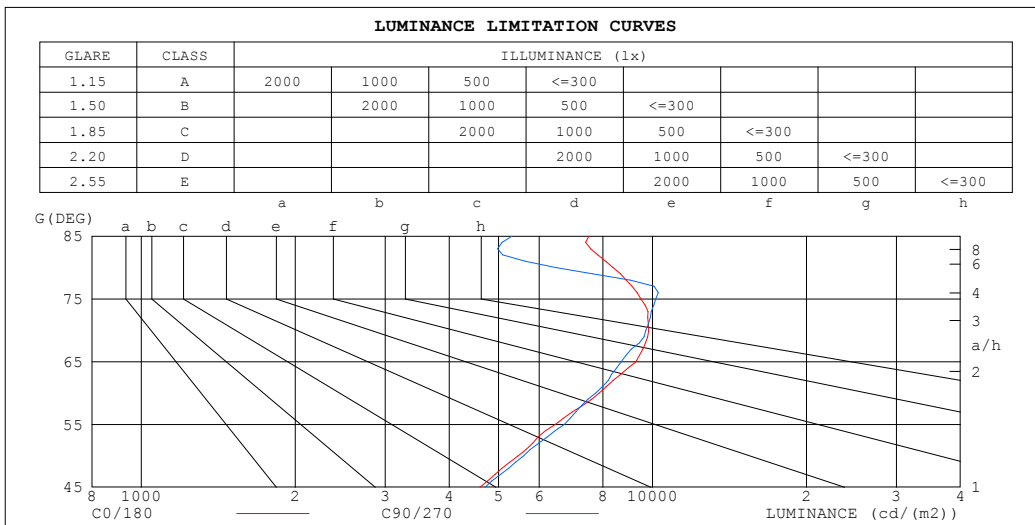
°	C0	C45	C90	C135	C180	C225	C270	C315	°	□ zone	□ total	%lum,lamp
10	1.984	2.032	2.011	2.043	1.980	1.951	1.924	1.964	0- 10	0.1861	0.1861	1.03,1.03
20	2.246	2.284	2.308	2.283	2.179	2.141	2.152	2.177	10- 20	0.5964	0.7825	4.31,4.31
30	2.581	2.611	2.653	2.602	2.456	2.480	2.421	2.507	20- 30	1.098	1.881	10.4,10.4
40	3.026	3.067	3.108	3.086	2.868	2.837	2.850	2.906	30- 40	1.723	3.603	19.9,19.9
50	3.491	3.550	3.613	3.543	3.325	3.336	3.295	3.458	40- 50	2.482	6.085	33.5,33.5
60	3.912	3.864	3.885	3.879	3.670	3.809	3.901	4.011	50- 60	3.305	9.390	51.8,51.8
70	3.343	3.212	3.333	3.647	3.606	3.681	3.738	3.832	60- 70	3.767	13.16	72.5,72.5
80	1.446	1.572	1.132	2.468	2.811	2.699	1.592	1.989	70- 80	3.063	16.22	89.4,89.4
90	0.2736	0.2984	0.1885	0.8571	1.192	1.042	0.2445	0.3144	80- 90	1.351	17.57	96.8,96.8
100	0.1346	0.1313	0.0230	0.1775	0.2417	0.1769	0.0209	0.0292	90-100	0.2957	17.87	98.5,98.5
110	0.0911	0.0563	0.0251	0.1086	0.1303	0.1000	0.0230	0.0355	100-110	0.0971	17.96	99,99
120	0.0352	0.0375	0.0251	0.0751	0.1034	0.0729	0.0230	0.0313	110-120	0.0629	18.03	99.4,99.4
130	0.0331	0.0395	0.0271	0.0730	0.0703	0.0396	0.0209	0.0334	120-130	0.0434	18.07	99.6,99.6
140	0.0414	0.0396	0.0251	0.0522	0.0435	0.0396	0.0209	0.0355	130-140	0.0312	18.10	99.8,99.8
150	0.0414	0.0271	0.0250	0.0355	0.0372	0.0270	0.0209	0.0313	140-150	0.0214	18.12	99.9,99.9
160	0.0228	0.0229	0.0230	0.0250	0.0207	0.0208	0.0209	0.0230	150-160	0.0115	18.13	100,100
170	0.0207	0.0208	0.0230	0.0209	0.0207	0.0208	0.0209	0.0230	160-170	0.0062	18.14	100,100
180	0.0207	0.0208	0.0230	0.0209	0.0207	0.0208	0.0209	0.0209	170-180	0.0020	18.14	100,100
DEG	LUMINOUS INTENSITY:cd									UNIT:lm		

C Range: 0 - 360DEG  
 C Interval: 22.5DEG  
 Test Speed: HIGH  
 Temperature:25.3DEG  
 Test Date:2023-08-10

□ Range: 0 - 180DEG  
 □ Interval: 1.0DEG  
 Test System:EVERFINE GO-2000B\_V1 SYSTEM V2.00.454  
 Humidity:65.0%  
 Test Distance:6.020m [K=1.0000]  
 Remarks:

**LUMINANCE LIMITATION CURVES**

Test:U:12.000V I:0.0638A P:0.7656W PF:1.0000 Freq:50.00Hz Lamp Flux:18.1431x1 lm		
NAME: MOD-RGB	TYPE: LED Module	WEIGHT:
SPEC.: 0.72W	DIM.: 66*22*11 (MM)	SERIAL No.: 001
MFR.: Flexfire LEDs, Inc.	SUR.:	Shielding Angle: 160



LUMINANCE cd/(m2)		
G (DEG)	C0/180	C90/270
85	7506	5305
80	8368	6485
75	9488	10143
70	9821	9699
65	9282	8684
60	7862	7733
55	6454	6715
50	5458	5594
45	4597	4700

C Range: 0 - 360DEG  
 C Interval: 22.5DEG  
 Test Speed: HIGH  
 Temperature:25.3DEG  
 Test Date:2023-08-10

Range: 0 - 180DEG  
 Interval: 1.0DEG  
 Test System:EVERFINE GO-2000B\_V1 SYSTEM V2.00.454  
 Humidity:65.0%  
 Test Distance:6.020m [K=1.0000]  
 Remarks:

**WEC AND CCEC**

Test:U:12.000V I:0.0638A P:0.7656W PF:1.0000 Freq:50.00Hz Lamp Flux:18.1431x1 lm								
NAME: MOD-RGB			TYPE: LED Module			WEIGHT:		
SPEC.: 0.72W			DIM.: 66*22*11 (MM)			SERIAL No.: 001		
MFR.: Flexfire LEDs, Inc.			SUR.:			Shielding Angle: 160		

<input type="checkbox"/> cc	80%		70%		50%		30%		10%		0				
<input type="checkbox"/> w	50%	30%	10%	50%	30%	10%	50%	30%	10%	50%	30%	10%	0		
<input type="checkbox"/> fc	20%		20%		20%		20%		20%		0				
RCR	RCR:Room Cavity Ratio						Wall Exitance Coefficients(WEC)								
0.0															
1.0	.449	.255	.081	.441	.251	.080	.425	.244	.078	.410	.237	.076	.397	.230	.074
2.0	.394	.216	.066	.386	.213	.066	.372	.207	.064	.359	.201	.063	.347	.196	.062
3.0	.348	.185	.055	.341	.183	.055	.328	.178	.054	.317	.173	.053	.306	.169	.052
4.0	.310	.161	.047	.304	.159	.047	.293	.155	.046	.282	.151	.046	.272	.148	.045
5.0	.279	.142	.041	.274	.140	.041	.263	.137	.040	.254	.134	.040	.245	.131	.039
6.0	.253	.127	.036	.248	.125	.036	.239	.122	.036	.230	.120	.035	.222	.117	.035
7.0	.231	.114	.032	.227	.113	.032	.219	.111	.032	.211	.108	.031	.204	.106	.031
8.0	.213	.104	.029	.209	.103	.029	.201	.101	.029	.194	.098	.028	.188	.096	.028
9.0	.197	.095	.027	.193	.094	.026	.187	.092	.026	.180	.090	.026	.174	.089	.026
10.0	.183	.088	.024	.180	.087	.024	.174	.085	.024	.168	.083	.024	.163	.082	.023

<input type="checkbox"/> cc	80%		70%		50%		30%		10%		0				
<input type="checkbox"/> w	50%	30%	10%	50%	30%	10%	50%	30%	10%	50%	30%	10%	0		
<input type="checkbox"/> fc	20%		20%		20%		20%		20%		0				
RCR	RCR:Room Cavity Ratio						Ceiling Cavity Exitance Coefficients(CCEC)								
0.0	.214	.214	.214	.183	.183	.183	.125	.125	.125	.072	.072	.072	.023	.023	.023
1.0	.214	.179	.148	.183	.154	.127	.125	.106	.088	.072	.061	.051	.023	.020	.017
2.0	.210	.156	.110	.180	.134	.095	.123	.093	.066	.071	.054	.039	.023	.017	.013
3.0	.204	.139	.088	.175	.120	.076	.120	.083	.053	.069	.049	.031	.022	.016	.010
4.0	.197	.127	.074	.169	.110	.064	.116	.076	.045	.067	.045	.027	.022	.015	.009
5.0	.188	.117	.065	.162	.101	.056	.111	.071	.040	.065	.042	.024	.021	.014	.008
6.0	.180	.109	.058	.155	.095	.051	.107	.066	.036	.062	.039	.021	.020	.013	.007
7.0	.172	.103	.054	.148	.089	.047	.102	.062	.033	.060	.037	.020	.019	.012	.007
8.0	.165	.097	.050	.142	.084	.044	.098	.059	.031	.057	.035	.018	.018	.011	.006
9.0	.158	.092	.047	.136	.080	.041	.094	.056	.029	.055	.033	.018	.018	.011	.006
10.0	.151	.088	.045	.130	.076	.040	.090	.054	.028	.053	.032	.017	.017	.010	.006

C Range: 0 - 360DEG  
 C Interval: 22.5DEG  
 Test Speed: HIGH  
 Temperature:25.3DEG  
 Test Date:2023-08-10

Range: 0 - 180DEG  
 Interval: 1.0DEG  
 Test System:EVERFINE GO-2000B\_V1 SYSTEM V2.00.454  
 Humidity:65.0%  
 Test Distance:6.020m [K=1.0000]  
 Remarks:

**UGR(Unified Glare Rating) Table**

Test:U:12.000V I:0.0638A P:0.7656W PF:1.0000 Freq:50.00Hz Lamp Flux:18.1431x1 lm										
NAME: MOD-RGB			TYPE: LED Module			WEIGHT:				
SPEC.: 0.72W			DIM.: 66*22*11 (MM)			SERIAL No.: 001				
MFR.: Flexfire LEDs, Inc.			SUR.:			Shielding Angle: 160				
ceiling/cavity	0.7	0.7	0.5	0.5	0.3	0.7	0.7	0.5	0.5	0.3
walls	0.5	0.3	0.5	0.3	0.3	0.5	0.3	0.5	0.3	0.3
working plane	0.2	0.2	0.2	0.2	0.2	0.2	0.2	0.2	0.2	0.2
Room dimensions	Viewed crosswise					Viewed endwise				
x = 2H y = 2H	4.2	7.9	4.9	8.5	9.2	4.2	7.9	4.9	8.5	9.2
3H	7.1	10.5	7.9	11.2	12.0	7.1	10.5	7.9	11.2	12.0
4H	8.0	11.3	8.9	12.1	12.8	8.2	11.5	9.0	12.2	13.0
6H	8.6	11.7	9.5	12.5	13.3	8.8	11.9	9.7	12.7	13.5
8H	8.8	11.8	9.7	12.6	13.4	8.9	11.9	9.8	12.7	13.6
12H	8.9	11.8	9.8	12.6	13.5	8.9	11.8	9.8	12.6	13.5
4H 2H	4.9	8.1	5.7	8.9	9.7	4.8	8.1	5.7	8.9	9.7
3H	7.8	10.7	8.7	11.5	12.4	8.0	10.8	8.8	11.7	12.5
4H	8.9	11.6	9.8	12.4	13.3	9.3	11.9	10.2	12.8	13.7
6H	9.6	12.0	10.6	12.9	13.9	10.1	12.5	11.1	13.4	14.4
8H	9.8	12.1	10.8	13.0	14.0	10.3	12.6	11.3	13.5	14.5
12H	10.0	12.1	11.0	13.1	14.1	10.4	12.5	11.4	13.5	14.5
8H 4H	9.2	11.5	10.2	12.4	13.4	9.9	12.1	10.8	13.0	14.0
6H	10.1	12.0	11.1	13.0	14.1	11.0	13.0	12.1	14.0	15.0
8H	10.4	12.2	11.5	13.2	14.3	11.4	13.2	12.5	14.2	15.3
12H	10.7	12.2	11.8	13.3	14.4	11.8	13.3	12.8	14.3	15.5
12H 4H	9.2	11.3	10.3	12.3	13.3	10.0	12.1	11.0	13.1	14.1
6H	10.2	12.0	11.3	12.9	14.1	11.3	13.0	12.4	14.0	15.2
8H	10.6	12.1	11.7	13.2	14.3	11.8	13.4	12.9	14.4	15.6
CIE190: 2010										

CIE190: 2010  
Area: 0.001 m2

C Range: 0 - 360DEG  
C Interval: 22.5DEG  
Test Speed: HIGH  
Temperature:25.3DEG  
Test Date:2023-08-10

Range: 0 - 180DEG  
 Interval: 1.0DEG  
Test System:EVERFINE GO-2000B\_V1 SYSTEM V2.00.454  
Humidity:65.0%  
Test Distance:6.020m [K=1.0000]  
Remarks:

**UTILIZATION FACTORS TABLE**

Test:U:12.000V I:0.0638A P:0.7656W PF:1.0000 Freq:50.00Hz Lamp Flux:18.1431x1 lm		
NAME: MOD-RGB	TYPE: LED Module	WEIGHT:
SPEC.: 0.72W	DIM.: 66*22*11 (MM)	SERIAL No.: 001
MFR.: Flexfire LEDs, Inc.	SUR.:	Shielding Angle: 160

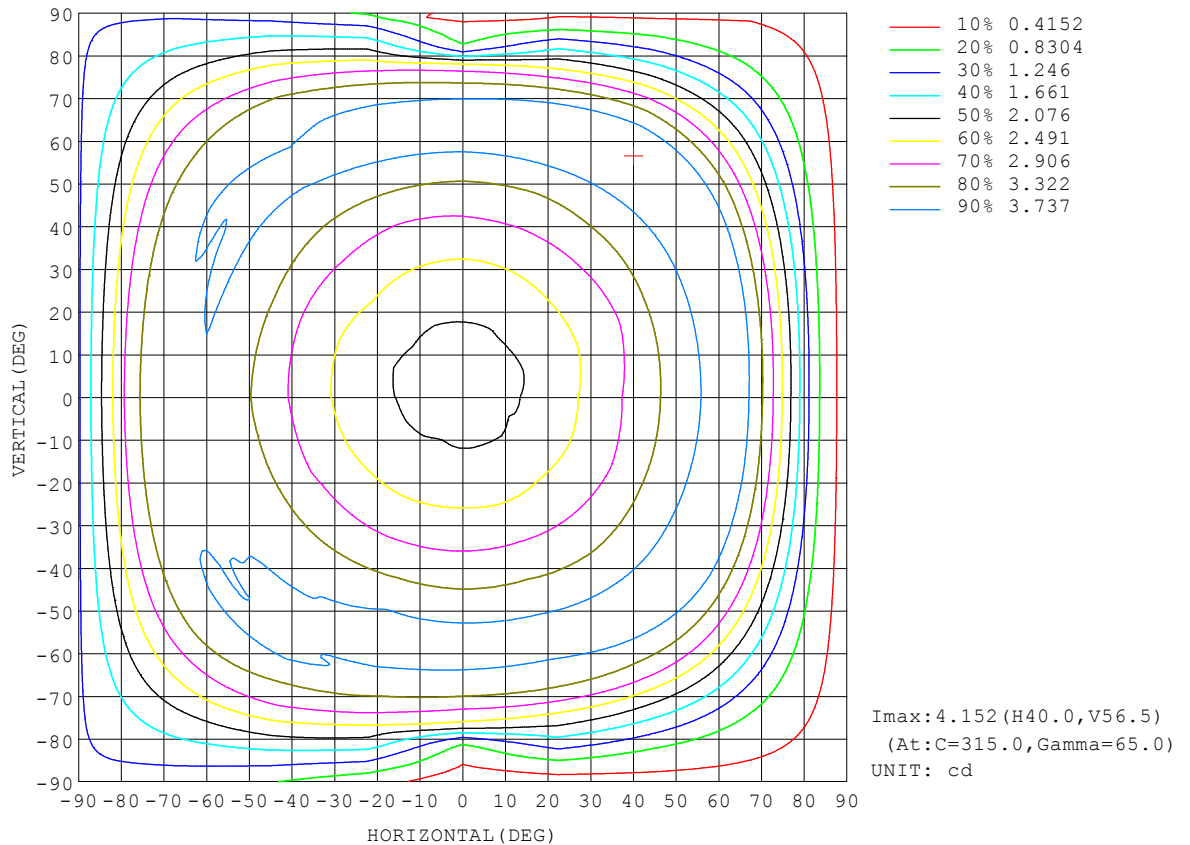
REFLECTANCE										
Ceiling	0.8	0.8	0.8	0.7	0.7	0.7	0.5	0.5	0.5	0
Walls	0.7	0.5	0.3	0.7	0.5	0.3	0.7	0.5	0.3	0
Working plane	0.2	0.2	0.2	0.2	0.2	0.2	0.2	0.2	0.2	0
ROOM INDEX	UTILIZATION FACTORS (PERCENT) $k(RI) \times RCR = 5$									
k = 0.60	44	30	22	43	30	22	42	29	21	14
0.80	53	39	29	52	38	29	50	37	29	20
1.00	61	47	37	60	46	37	57	48	36	27
1.25	69	55	45	67	54	45	64	52	44	34
1.50	75	61	51	72	60	51	69	58	49	39
2.00	83	71	62	81	69	61	76	67	59	49
2.50	89	77	69	86	76	68	81	73	66	55
3.00	93	83	75	90	81	74	85	78	71	60
4.00	99	90	83	96	88	82	90	84	79	67
5.00	102	95	89	99	93	87	94	88	84	72
ROOM INDEX	UF(total)									Direct
According to DIN EN 13032-2 2004			Suspended				SHRNOM = 1.25			

C Range: 0 - 360DEG  
 C Interval: 22.5DEG  
 Test Speed: HIGH  
 Temperature:25.3DEG  
 Test Date:2023-08-10

Range: 0 - 180DEG  
 Interval: 1.0DEG  
 Test System:EVERFINE GO-2000B\_V1 SYSTEM V2.00.454  
 Humidity:65.0%  
 Test Distance:6.020m [K=1.0000]  
 Remarks:

ISOCANDELA DIAGRAM

Test:U:12.000V I:0.0638A P:0.7656W PF:1.0000 Freq:50.00Hz Lamp Flux:18.1431x1 lm		
NAME: MOD-RGB	TYPE: LED Module	WEIGHT:
SPEC.: 0.72W	DIM.: 66*22*11 (MM)	SERIAL No.: 001
MFR.: Flexfire LEDs, Inc.	SUR.:	Shielding Angle: 160

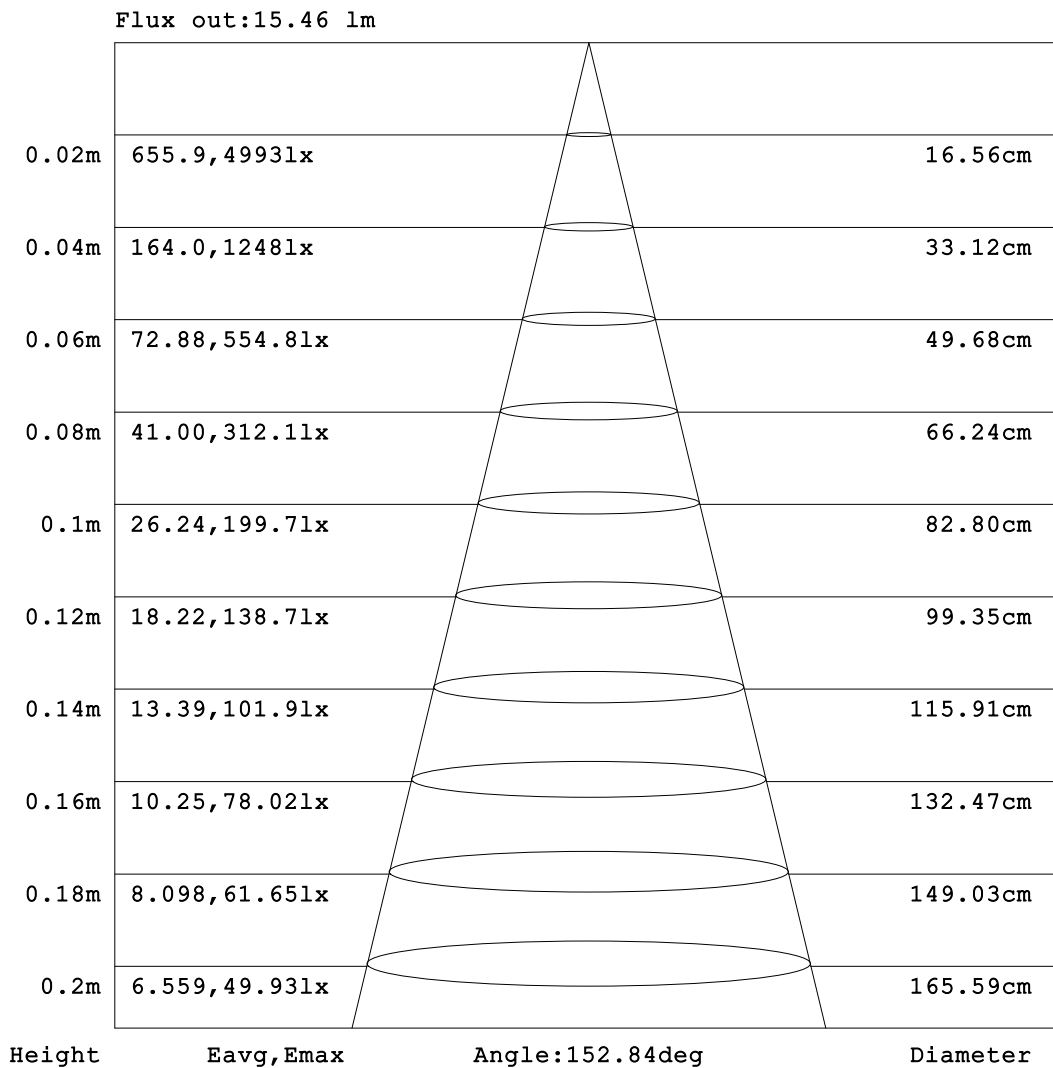


C Range: 0 - 360DEG  
 C Interval: 22.5DEG  
 Test Speed: HIGH  
 Temperature: 25.3DEG  
 Test Date: 2023-08-10

Range: 0 - 180DEG  
 Interval: 1.0DEG  
 Test System: EVERFINE GO-2000B\_V1 SYSTEM V2.00.454  
 Humidity: 65.0%  
 Test Distance: 6.020m [K=1.0000]  
 Remarks:

**AAI Figure**

Test:U:12.000V I:0.0638A P:0.7656W PF:1.0000 Freq:50.00Hz Lamp Flux:18.1431x1 lm		
NAME: MOD-RGB	TYPE: LED Module	WEIGHT:
SPEC.: 0.72W	DIM.: 66*22*11 (MM)	SERIAL No.: 001
MFR.: Flexfire LEDs, Inc.	SUR.:	Shielding Angle: 160



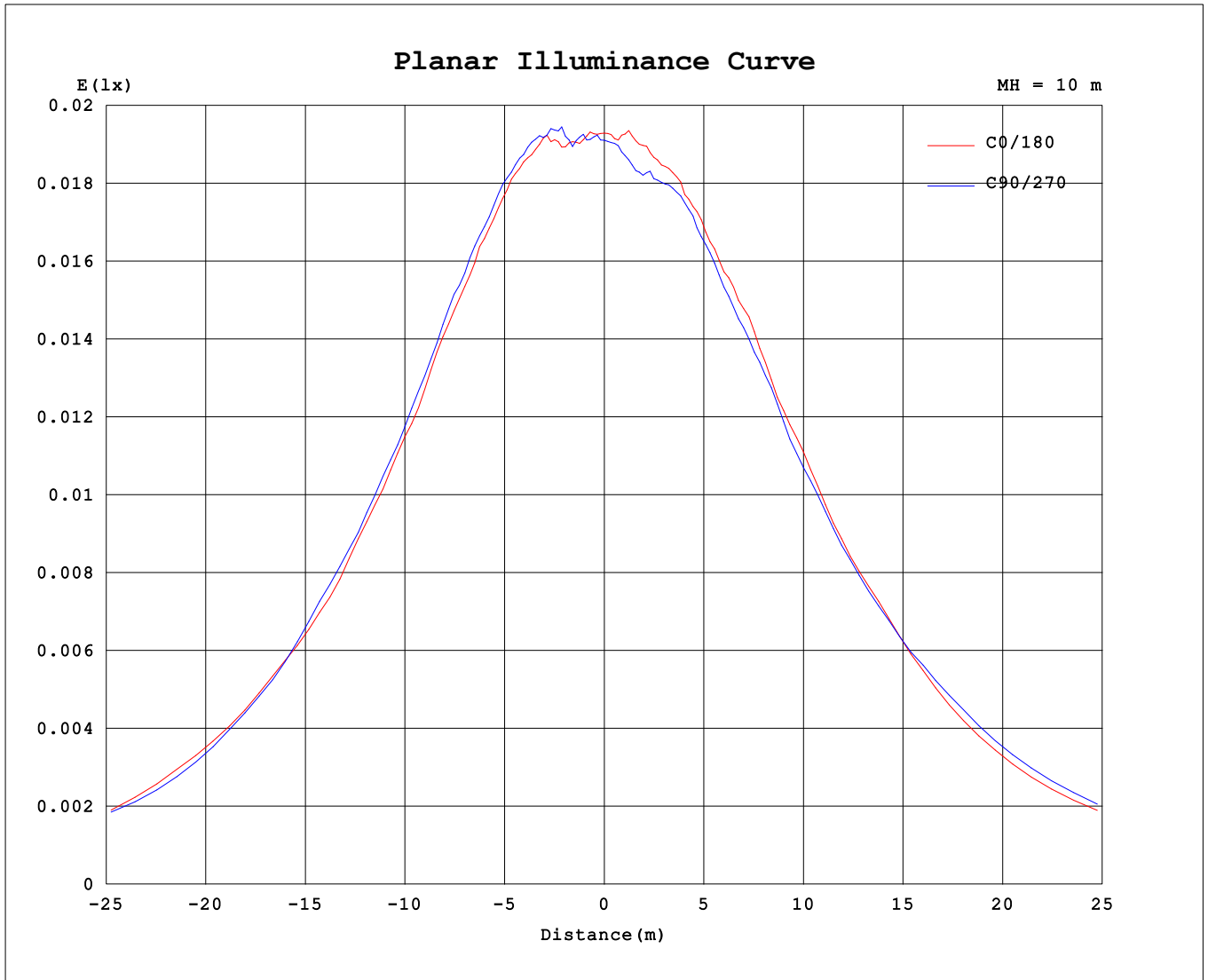
Note: The Curves indicate the illuminated area and the average illumination when the luminaire is at different distance.

C Range: 0 - 360DEG  
 C Interval: 22.5DEG  
 Test Speed: HIGH  
 Temperature: 25.3DEG  
 Test Date: 2023-08-10

Range: 0 - 180DEG  
 Interval: 1.0DEG  
 Test System: EVERFINE GO-2000B\_V1 SYSTEM V2.00.454  
 Humidity: 65.0%  
 Test Distance: 6.020m [K=1.0000]  
 Remarks:



Planar Illuminance Curve



C Range: 0 - 360DEG  
 C Interval: 22.5DEG  
 Test Speed: HIGH  
 Temperature:25.3DEG  
 Test Date:2023-08-10

Range: 0 - 180DEG  
 Interval: 1.0DEG  
 Test System:EVERFINE GO-2000B\_V1 SYSTEM V2.00.454  
 Humidity:65.0%  
 Test Distance:6.020m [K=1.0000]  
 Remarks:

LUMINOUS DISTRIBUTION INTENSITY DATA

Test:U:12.000V I:0.0638A P:0.7656W PF:1.0000 Freq:50.00Hz Lamp Flux:18.1431x1 lm		
NAME: MOD-RGB	TYPE: LED Module	WEIGHT:
SPEC.: 0.72W	DIM.: 66*22*11 (MM)	SERIAL No.: 001
MFR.: Flexfire LEDs, Inc.	SUR.:	Shielding Angle: 160

Table--1

UNIT: cd

C (DEG) □ (DEG)	0	22.5	45	67.5	90	112.5	135	157.5	180	202.5	225	247.5	270	292.5	315	337.5			
0	1.92	1.92	1.92	1.92	1.92	1.92	1.92	1.92	1.92	1.92	1.92	1.92	1.92	1.92	1.92	1.92			
5	1.93	1.96	1.96	1.95	1.94	1.96	1.97	1.95	1.94	1.90	1.93	1.91	1.91	1.93	1.95	1.93			
10	1.98	2.03	2.03	2.05	2.01	2.03	2.04	2.01	1.98	1.93	1.95	1.93	1.92	1.92	1.96	1.93			
15	2.11	2.12	2.13	2.13	2.16	2.22	2.15	2.09	2.05	1.99	2.06	1.97	2.02	2.03	2.06	2.06			
20	2.25	2.27	2.28	2.28	2.31	2.31	2.28	2.20	2.18	2.12	2.14	2.11	2.15	2.13	2.18	2.21			
25	2.42	2.41	2.45	2.44	2.47	2.46	2.38	2.35	2.31	2.25	2.27	2.23	2.28	2.29	2.34	2.34			
30	2.58	2.64	2.61	2.68	2.65	2.64	2.60	2.53	2.46	2.42	2.48	2.39	2.42	2.45	2.51	2.53			
35	2.78	2.79	2.83	2.86	2.87	2.85	2.81	2.75	2.68	2.61	2.65	2.60	2.61	2.60	2.68	2.67			
40	3.03	3.01	3.07	3.10	3.11	3.08	3.09	2.95	2.87	2.83	2.84	2.78	2.85	2.83	2.91	2.89			
45	3.23	3.28	3.27	3.32	3.34	3.36	3.31	3.23	3.12	3.07	3.11	3.04	3.04	3.05	3.11	3.21			
50	3.49	3.50	3.55	3.59	3.61	3.62	3.54	3.47	3.33	3.38	3.34	3.30	3.30	3.32	3.46	3.47			
55	3.68	3.74	3.77	3.82	3.87	3.81	3.74	3.64	3.60	3.56	3.60	3.60	3.61	3.65	3.69	3.69			
60	3.91	3.94	3.86	3.85	3.89	3.85	3.88	3.71	3.67	3.76	3.81	3.87	3.90	3.90	4.01	3.94			
65	3.90	3.83	3.74	3.63	3.69	3.74	3.75	3.74	3.63	3.71	3.82	3.98	3.98	3.97	4.17	4.02			
70	3.34	3.27	3.21	3.26	3.33	3.48	3.65	3.68	3.61	3.67	3.68	3.71	3.74	3.78	3.83	3.63			
75	2.44	2.42	2.43	2.51	2.64	2.91	3.19	3.32	3.37	3.34	3.40	3.27	3.14	3.09	3.07	2.77			
80	1.45	1.48	1.57	1.72	1.13	2.14	2.47	2.64	2.81	2.78	2.70	2.45	1.59	2.09	1.99	1.78			
85	0.65	0.68	0.76	0.90	0.46	1.34	1.63	1.81	2.01	1.95	1.87	1.59	0.62	1.13	1.03	0.85			
90	0.27	0.29	0.30	0.27	0.19	0.58	0.86	1.03	1.19	1.16	1.04	0.79	0.24	0.33	0.31	0.37			
95	0.17	0.17	0.17	0.12	0.02	0.18	0.33	0.43	0.56	0.53	0.43	0.25	0.02	0.03	0.10	0.15			
100	0.13	0.13	0.13	0.03	0.02	0.10	0.18	0.20	0.24	0.23	0.18	0.15	0.02	0.07	0.03	0.09			
105	0.11	0.10	0.11	0.03	0.03	0.05	0.14	0.13	0.15	0.17	0.13	0.11	0.02	0.07	0.03	0.08			
110	0.09	0.07	0.06	0.03	0.03	0.05	0.11	0.12	0.13	0.15	0.10	0.09	0.02	0.07	0.04	0.06			
115	0.06	0.04	0.04	0.03	0.03	0.05	0.08	0.11	0.11	0.13	0.08	0.08	0.02	0.05	0.03	0.05			
120	0.04	0.03	0.04	0.03	0.03	0.05	0.08	0.10	0.10	0.12	0.07	0.06	0.02	0.03	0.03	0.04			
125	0.03	0.04	0.04	0.03	0.03	0.04	0.08	0.07	0.09	0.10	0.06	0.04	0.02	0.03	0.03	0.04			
130	0.03	0.04	0.04	0.03	0.03	0.04	0.07	0.07	0.07	0.08	0.04	0.04	0.02	0.03	0.03	0.03			
135	0.04	0.04	0.04	0.03	0.03	0.03	0.06	0.05	0.06	0.07	0.04	0.03	0.02	0.03	0.03	0.03			
140	0.04	0.04	0.04	0.02	0.03	0.04	0.05	0.04	0.04	0.06	0.04	0.03	0.02	0.03	0.04	0.03			
145	0.04	0.04	0.04	0.02	0.03	0.03	0.04	0.04	0.04	0.05	0.03	0.03	0.02	0.02	0.03	0.04			
150	0.04	0.02	0.03	0.02	0.03	0.03	0.04	0.02	0.04	0.04	0.03	0.02	0.02	0.02	0.03	0.04			
155	0.02	0.02	0.02	0.02	0.02	0.02	0.03	0.02	0.02	0.03	0.02	0.02	0.02	0.02	0.03	0.03			
160	0.02	0.02	0.02	0.02	0.02	0.02	0.03	0.02	0.02	0.02	0.02	0.02	0.02	0.02	0.02	0.02			
165	0.02	0.02	0.02	0.02	0.03	0.02	0.02	0.02	0.02	0.02	0.02	0.02	0.02	0.02	0.02	0.02			
170	0.02	0.02	0.02	0.02	0.02	0.02	0.02	0.02	0.02	0.02	0.02	0.02	0.02	0.02	0.02	0.02			
175	0.02	0.02	0.02	0.02	0.02	0.02	0.02	0.02	0.02	0.02	0.02	0.02	0.02	0.02	0.02	0.02			
180	0.02	0.02	0.02	0.02	0.02	0.02	0.02	0.02	0.02	0.02	0.02	0.02	0.02	0.02	0.02	0.02			

C Range: 0 - 360DEG  
 C Interval: 22.5DEG  
 Test Speed: HIGH  
 Temperature:25.3DEG  
 Test Date:2023-08-10

□ Range: 0 - 180DEG  
 □ Interval: 1.0DEG  
 Test System:EVERFINE GO-2000B\_V1 SYSTEM V2.00.454  
 Humidity:65.0%  
 Test Distance:6.020m [K=1.0000]  
 Remarks: