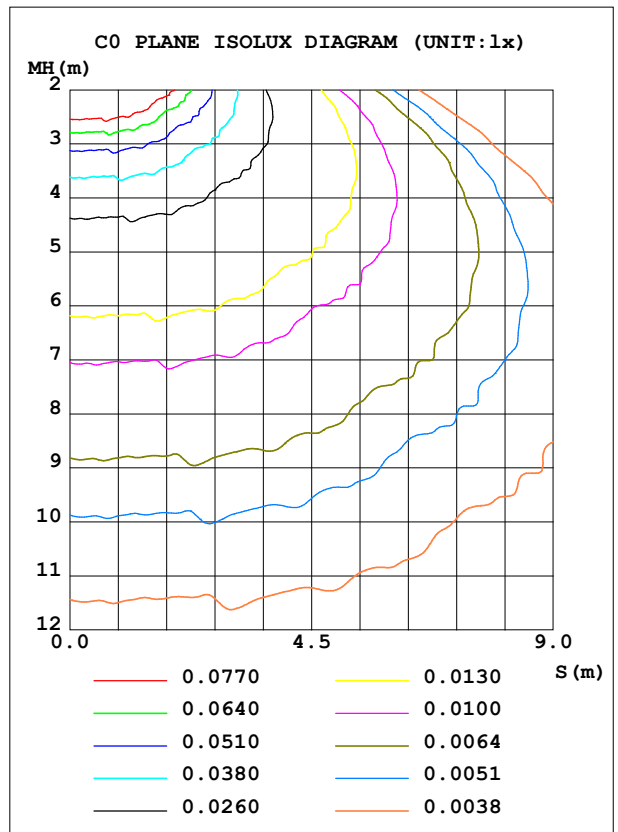
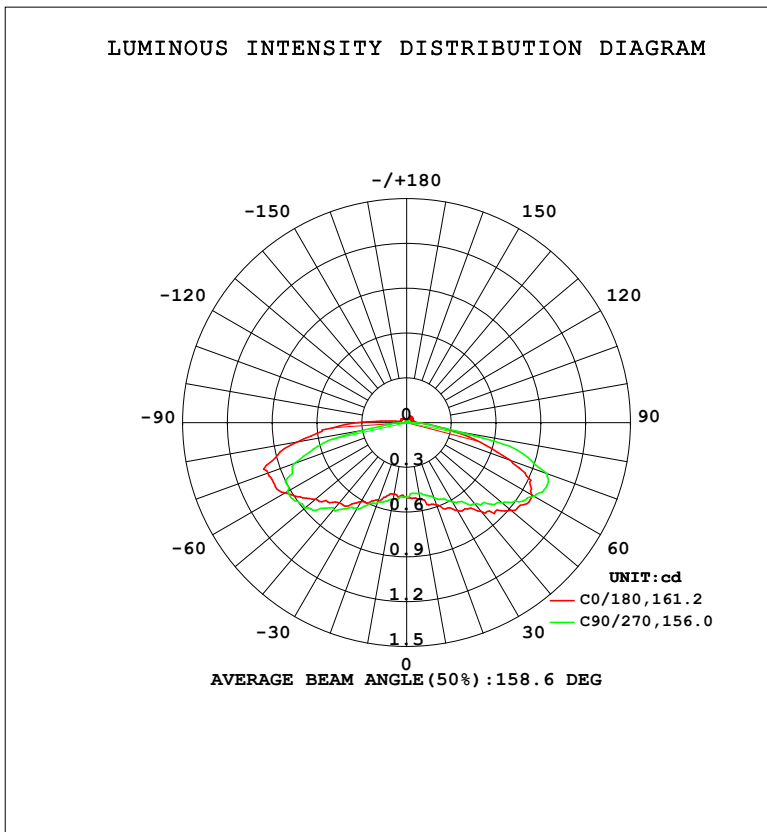


LUMINAIRE PHOTOMETRIC TEST REPORT

Test:U:12.000V I:0.0198A P:0.2376W PF:1.0000 Freq:50.00Hz Lamp Flux:4.56639x1 lm		
NAME: MOD-RGB	TYPE: LED Module	WEIGHT:
SPEC.: 0.72W	DIM.: 66*22*11 (MM)	SERIAL No.: 001
MFR.: Flexfire LEDs, Inc.	SUR.:	Shielding Angle: 160

DATA OF LAMP		PHOTOMETRIC DATA			
MODEL	MOD-RGB	Imax (cd)	1.045	S/MH	2.21
NOMINAL POWER (W)	0.72	LOR (%)	100.0		
RATED VOLTAGE (V)	12	TOTAL FLUX (lm)	4.5664	<input type="checkbox"/> UP, DN (C0-180)	2.4,48.2
NOMINAL FLUX (lm)	4.56639	CIE CLASS	DIRECT	<input type="checkbox"/> UP, DN (C180-360)	2.4,47.1
LAMPS INSIDE	1	<input type="checkbox"/> up (%)	4.7	CIBSE SHR NOM	2.00
TEST VOLTAGE (V)	12	<input type="checkbox"/> down (%)	95.3	CIBSE SHR MAX	2.00



C Range: 0 - 360DEG
 C Interval: 22.5DEG
 Test Speed: HIGH
 Temperature:25.3DEG
 Test Date:2023-08-10

Range: 0 - 180DEG
 Interval: 1.0DEG
 Test System:EVERFINE GO-2000B_V1 SYSTEM V2.00.454
 Humidity:65.0%
 Test Distance:6.020m [K=1.0000]
 Remarks:

ZONAL FLUX DIAGRAM

ZONAL FLUX DIAGRAM:

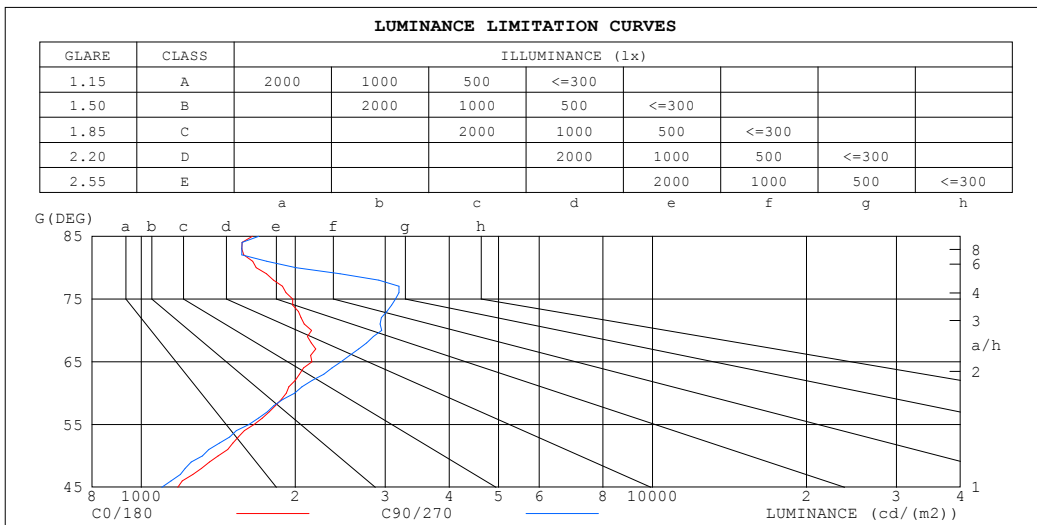
°	C0	C45	C90	C135	C180	C225	C270	C315	°	□ zone	□ total	%lum,lamp
10	0.5195	0.5111	0.4842	0.5067	0.4881	0.5132	0.5173	0.5235	0- 10	0.0479	0.0479	1.05,1.05
20	0.5865	0.5651	0.5397	0.5564	0.5635	0.5693	0.5709	0.5773	10- 20	0.1523	0.2003	4.39,4.39
30	0.6787	0.6294	0.6118	0.6310	0.6118	0.6442	0.6635	0.6683	20- 30	0.2794	0.4797	10.5,10.5
40	0.7750	0.7580	0.7088	0.6993	0.7040	0.7232	0.7603	0.7614	30- 40	0.4333	0.9130	20,20
50	0.9153	0.8331	0.8383	0.8027	0.7984	0.8560	0.8922	0.8693	40- 50	0.6137	1.527	33.4,33.4
60	0.9680	0.9786	0.9888	0.9619	0.9409	0.9373	0.9229	0.9415	50- 60	0.8208	2.348	51.4,51.4
70	0.7418	0.8521	1.001	1.018	0.9889	0.8475	0.8010	0.7239	60- 70	0.9307	3.278	71.8,71.8
80	0.2938	0.4182	0.3454	0.6752	0.7432	0.5775	0.2898	0.3617	70- 80	0.7435	4.022	88.1,88.1
90	0.0755	0.0895	0.0475	0.2364	0.3286	0.2137	0.0389	0.0495	80- 90	0.3283	4.350	95.3,95.3
100	0.0482	0.0457	0.0185	0.0580	0.0606	0.0436	0.0103	0.0186	90-100	0.0767	4.427	96.9,96.9
110	0.0377	0.0312	0.0185	0.0414	0.0440	0.0436	0.0103	0.0186	100-110	0.0352	4.462	97.7,97.7
120	0.0398	0.0249	0.0185	0.0352	0.0440	0.0394	0.0103	0.0186	110-120	0.0290	4.491	98.3,98.3
130	0.0418	0.0312	0.0165	0.0269	0.0398	0.0312	0.0103	0.0186	120-130	0.0244	4.515	98.9,98.9
140	0.0503	0.0250	0.0165	0.0248	0.0314	0.0395	0.0103	0.0186	130-140	0.0196	4.535	99.3,99.3
150	0.0420	0.0208	0.0165	0.0228	0.0377	0.0270	0.0103	0.0186	140-150	0.0156	4.550	99.7,99.7
160	0.0189	0.0187	0.0165	0.0207	0.0251	0.0208	0.0103	0.0186	150-160	0.0091	4.560	99.9,99.9
170	0.0189	0.0187	0.0165	0.0186	0.0189	0.0208	0.0103	0.0186	160-170	0.0051	4.565	100,100
180	0.0189	0.0187	0.0165	0.0186	0.0189	0.0208	0.0103	0.0186	170-180	0.0017	4.566	100,100
DEG	LUMINOUS INTENSITY:cd									UNIT:lm		

C Range: 0 - 360DEG
 C Interval: 22.5DEG
 Test Speed: HIGH
 Temperature:25.3DEG
 Test Date:2023-08-10

□ Range: 0 - 180DEG
 □ Interval: 1.0DEG
 Test System:EVERFINE GO-2000B_V1 SYSTEM V2.00.454
 Humidity:65.0%
 Test Distance:6.020m [K=1.0000]
 Remarks:

LUMINANCE LIMITATION CURVES

Test:U:12.000V I:0.0198A P:0.2376W PF:1.0000 Freq:50.00Hz Lamp Flux:4.56639x1 lm		
NAME: MOD-RGB	TYPE: LED Module	WEIGHT:
SPEC.: 0.72W	DIM.: 66*22*11 (MM)	SERIAL No.: 001
MFR.: Flexfire LEDs, Inc.	SUR.:	Shielding Angle: 160



LUMINANCE cd/(m2)		
G (DEG)	C0/180	C90/270
85	1649	1696
80	1679	2007
75	1977	3142
70	2152	2954
65	2154	2459
60	1921	1995
55	1660	1623
50	1413	1316
45	1179	1096

C Range: 0 - 360DEG
 C Interval: 22.5DEG
 Test Speed: HIGH
 Temperature:25.3DEG
 Test Date:2023-08-10

Range: 0 - 180DEG
 Interval: 1.0DEG
 Test System:EVERFINE GO-2000B_V1 SYSTEM V2.00.454
 Humidity:65.0%
 Test Distance:6.020m [K=1.0000]
 Remarks:

WEC AND CCEC

Test:U:12.000V I:0.0198A P:0.2376W PF:1.0000 Freq:50.00Hz Lamp Flux:4.56639x1 lm								
NAME: MOD-RGB			TYPE: LED Module			WEIGHT:		
SPEC.: 0.72W			DIM.: 66*22*11 (MM)			SERIAL No.: 001		
MFR.: Flexfire LEDs, Inc.			SUR.:			Shielding Angle: 160		

<input type="checkbox"/> cc	80%			70%			50%			30%			10%			0
<input type="checkbox"/> w	50%	30%	10%	50%	30%	10%	50%	30%	10%	50%	30%	10%	50%	30%	10%	0
<input type="checkbox"/> fc	20%			20%			20%			20%			20%			0
RCR	RCR:Room Cavity Ratio						Wall Exitance Coefficients(WEC)									
0.0																
1.0	.443	.252	.080	.434	.247	.079	.417	.239	.076	.402	.232	.074	.388	.225	.072	
2.0	.389	.213	.065	.381	.210	.065	.366	.203	.063	.352	.197	.062	.339	.192	.060	
3.0	.344	.183	.055	.337	.181	.054	.324	.175	.053	.311	.170	.052	.299	.166	.051	
4.0	.307	.160	.047	.301	.157	.047	.289	.153	.046	.277	.149	.045	.267	.145	.044	
5.0	.277	.141	.041	.271	.139	.040	.260	.135	.040	.250	.132	.039	.240	.128	.039	
6.0	.251	.126	.036	.246	.124	.036	.236	.121	.035	.227	.118	.035	.218	.115	.034	
7.0	.229	.113	.032	.225	.112	.032	.216	.109	.031	.208	.106	.031	.200	.104	.031	
8.0	.211	.103	.029	.207	.102	.029	.199	.099	.028	.192	.097	.028	.185	.095	.028	
9.0	.195	.095	.026	.192	.093	.026	.184	.091	.026	.178	.089	.025	.171	.087	.025	
10.0	.182	.087	.024	.178	.086	.024	.172	.084	.024	.166	.082	.023	.160	.080	.023	

<input type="checkbox"/> cc	80%			70%			50%			30%			10%			0
<input type="checkbox"/> w	50%	30%	10%	50%	30%	10%	50%	30%	10%	50%	30%	10%	50%	30%	10%	0
<input type="checkbox"/> fc	20%			20%			20%			20%			20%			0
RCR	RCR:Room Cavity Ratio						Ceiling Cavity Exitance Coefficients(CCEC)									
0.0	.227	.227	.227	.194	.194	.194	.132	.132	.132	.076	.076	.076	.024	.024	.024	
1.0	.226	.191	.160	.193	.164	.138	.132	.113	.095	.076	.065	.055	.024	.021	.018	
2.0	.222	.168	.123	.190	.145	.106	.130	.100	.074	.075	.058	.043	.024	.019	.014	
3.0	.216	.152	.101	.185	.131	.087	.127	.091	.061	.073	.053	.036	.024	.017	.012	
4.0	.208	.139	.087	.179	.120	.075	.123	.084	.053	.071	.049	.031	.023	.016	.010	
5.0	.200	.130	.077	.172	.112	.067	.118	.078	.048	.069	.046	.028	.022	.015	.009	
6.0	.192	.122	.071	.165	.105	.062	.114	.074	.044	.066	.043	.026	.021	.014	.009	
7.0	.184	.115	.066	.159	.100	.058	.110	.070	.041	.064	.041	.024	.021	.013	.008	
8.0	.177	.109	.063	.152	.095	.055	.105	.067	.039	.061	.039	.023	.020	.013	.008	
9.0	.170	.104	.060	.146	.091	.052	.101	.064	.037	.059	.038	.022	.019	.012	.007	
10.0	.163	.100	.058	.141	.087	.051	.098	.061	.036	.057	.036	.021	.018	.012	.007	

C Range: 0 - 360DEG
 C Interval: 22.5DEG
 Test Speed: HIGH
 Temperature:25.3DEG
 Test Date:2023-08-10

Range: 0 - 180DEG
 Interval: 1.0DEG
 Test System:EVERFINE GO-2000B_V1 SYSTEM V2.00.454
 Humidity:65.0%
 Test Distance:6.020m [K=1.0000]
 Remarks:

UGR(Unified Glare Rating) Table

Test:U:12.000V I:0.0198A P:0.2376W PF:1.0000 Freq:50.00Hz Lamp Flux:4.56639x1 lm										
NAME: MOD-RGB			TYPE: LED Module				WEIGHT:			
SPEC.: 0.72W			DIM.: 66*22*11 (MM)				SERIAL No.: 001			
MFR.: Flexfire LEDs, Inc.			SUR.:				Shielding Angle: 160			
ceiling/cavity	0.7	0.7	0.5	0.5	0.3	0.7	0.7	0.5	0.5	0.3
walls	0.5	0.3	0.5	0.3	0.3	0.5	0.3	0.5	0.3	0.3
working plane	0.2	0.2	0.2	0.2	0.2	0.2	0.2	0.2	0.2	0.2
Room dimensions	Viewed crosswise					Viewed endwise				
x = 2H y = 2H	-5.2	-1.6	-4.4	-0.8	-0.1	-5.6	-2.0	-4.8	-1.3	-0.5
3H	-2.9	0.4	-2.1	1.2	2.0	-2.0	1.4	-1.1	2.1	3.0
4H	-2.2	1.0	-1.3	1.8	2.7	-0.6	2.6	0.3	3.4	4.3
6H	-1.7	1.3	-0.8	2.1	3.0	0.2	3.2	1.1	4.0	4.9
8H	-1.6	1.3	-0.7	2.1	3.1	0.3	3.2	1.2	4.0	5.0
12H	-1.6	1.2	-0.6	2.1	3.1	0.3	3.1	1.2	4.0	5.0
4H 2H	-4.5	-1.4	-3.7	-0.5	0.3	-4.7	-1.5	-3.9	-0.7	0.1
3H	-2.1	0.7	-1.2	1.6	2.5	-1.1	1.7	-0.2	2.6	3.6
4H	-1.2	1.3	-0.3	2.3	3.3	0.5	3.1	1.4	4.0	5.0
6H	-0.7	1.6	0.3	2.6	3.7	1.5	3.8	2.5	4.8	5.8
8H	-0.5	1.7	0.5	2.7	3.7	1.7	3.9	2.7	4.8	5.9
12H	-0.4	1.6	0.7	2.7	3.7	1.8	3.8	2.9	4.8	5.9
8H 4H	-0.8	1.4	0.2	2.4	3.4	1.1	3.2	2.1	4.2	5.3
6H	-0.1	1.8	1.0	2.9	4.0	2.3	4.2	3.4	5.3	6.4
8H	0.2	1.9	1.3	2.9	4.1	2.8	4.4	3.9	5.5	6.7
12H	0.4	1.9	1.5	3.0	4.2	3.1	4.6	4.2	5.7	6.9
12H 4H	-0.7	1.3	0.3	2.3	3.4	1.2	3.2	2.2	4.2	5.3
6H	0.1	1.8	1.2	2.8	4.0	2.6	4.3	3.7	5.3	6.5
8H	0.4	1.9	1.5	3.0	4.2	3.1	4.6	4.3	5.7	6.9
CIE190: 2010										

CIE190: 2010
Area: 0.001 m2

C Range: 0 - 360DEG
C Interval: 22.5DEG
Test Speed: HIGH
Temperature:25.3DEG
Test Date:2023-08-10

Range: 0 - 180DEG
 Interval: 1.0DEG
Test System:EVERFINE GO-2000B_V1 SYSTEM V2.00.454
Humidity:65.0%
Test Distance:6.020m [K=1.0000]
Remarks:

UTILIZATION FACTORS TABLE

Test:U:12.000V I:0.0198A P:0.2376W PF:1.0000 Freq:50.00Hz Lamp Flux:4.56639x1 lm		
NAME: MOD-RGB	TYPE: LED Module	WEIGHT:
SPEC.: 0.72W	DIM.: 66*22*11 (MM)	SERIAL No.: 001
MFR.: Flexfire LEDs, Inc.	SUR.:	Shielding Angle: 160

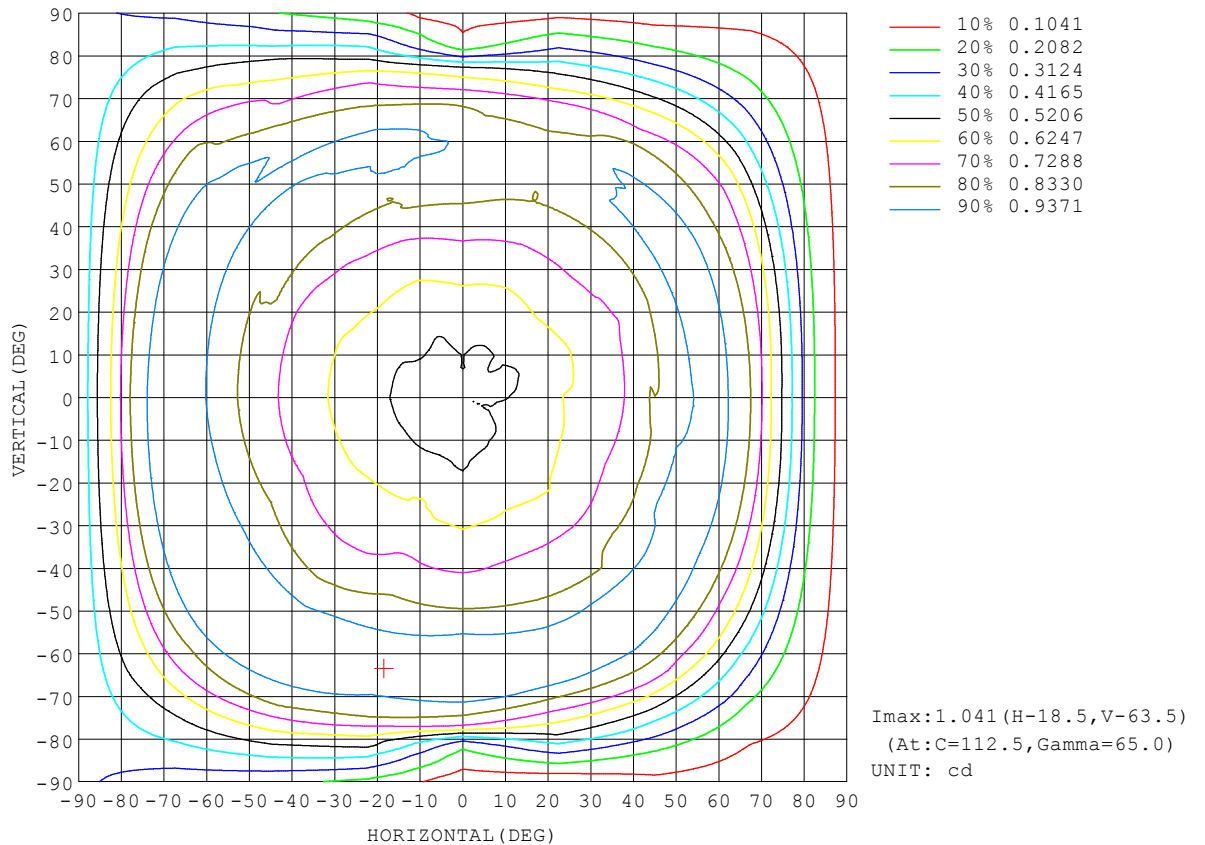
REFLECTANCE										
Ceiling	0.8	0.8	0.8	0.7	0.7	0.7	0.5	0.5	0.5	0
Walls	0.7	0.5	0.3	0.7	0.5	0.3	0.7	0.5	0.3	0
Working plane	0.2	0.2	0.2	0.2	0.2	0.2	0.2	0.2	0.2	0
ROOM INDEX	UTILIZATION FACTORS (PERCENT) $k(RI) \times RCR = 5$									
k = 0.60	44	30	22	43	30	22	41	29	22	14
0.80	53	39	30	52	38	29	49	37	29	20
1.00	61	47	37	60	46	37	57	48	36	27
1.25	69	55	45	67	54	45	63	52	44	34
1.50	75	61	51	72	60	51	68	57	49	39
2.00	83	71	62	81	69	61	76	66	59	48
2.50	88	77	69	86	76	68	81	72	65	54
3.00	93	83	75	90	81	74	85	77	71	60
4.00	98	90	83	95	88	81	90	84	78	67
5.00	102	95	89	99	92	87	93	88	83	71
ROOM INDEX	UF(total)									Direct
According to DIN EN 13032-2 2004			Suspended				SHRNOM = 1.25			

C Range: 0 - 360DEG
 C Interval: 22.5DEG
 Test Speed: HIGH
 Temperature:25.3DEG
 Test Date:2023-08-10

Range: 0 - 180DEG
 Interval: 1.0DEG
 Test System:EVERFINE GO-2000B_V1 SYSTEM V2.00.454
 Humidity:65.0%
 Test Distance:6.020m [K=1.0000]
 Remarks:

ISOCANDELA DIAGRAM

Test:U:12.000V I:0.0198A P:0.2376W PF:1.0000 Freq:50.00Hz Lamp Flux:4.56639x1 lm		
NAME: MOD-RGB	TYPE: LED Module	WEIGHT:
SPEC.: 0.72W	DIM.: 66*22*11 (MM)	SERIAL No.: 001
MFR.: Flexfire LEDs, Inc.	SUR.:	Shielding Angle: 160

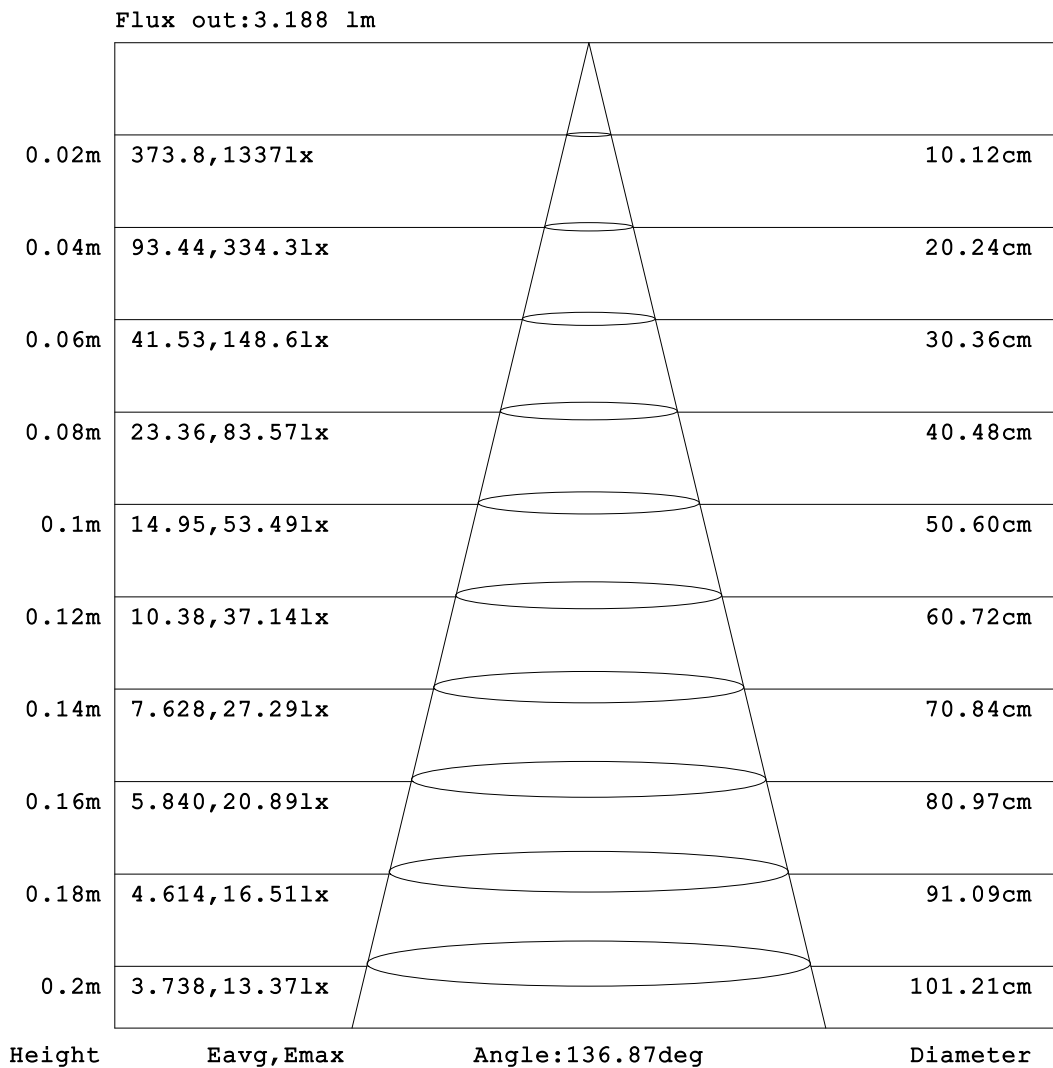


C Range: 0 - 360DEG
 C Interval: 22.5DEG
 Test Speed: HIGH
 Temperature: 25.3DEG
 Test Date: 2023-08-10

Range: 0 - 180DEG
 Interval: 1.0DEG
 Test System: EVERFINE GO-2000B_V1 SYSTEM V2.00.454
 Humidity: 65.0%
 Test Distance: 6.020m [K=1.0000]
 Remarks:

AAI Figure

Test:U:12.000V I:0.0198A P:0.2376W PF:1.0000 Freq:50.00Hz Lamp Flux:4.56639x1 lm		
NAME: MOD-RGB	TYPE: LED Module	WEIGHT:
SPEC.: 0.72W	DIM.: 66*22*11 (MM)	SERIAL No.: 001
MFR.: Flexfire LEDs, Inc.	SUR.:	Shielding Angle: 160

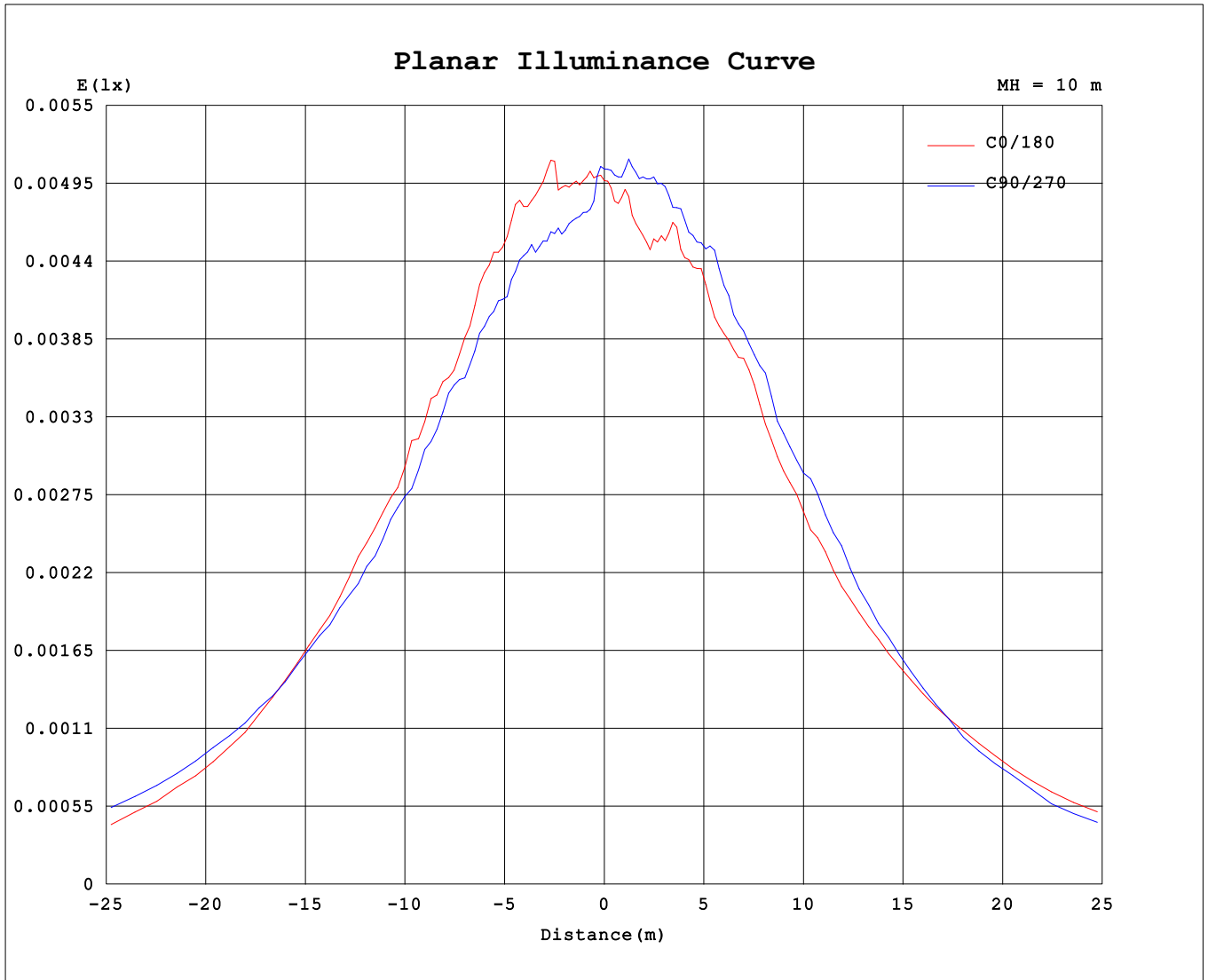


Note: The Curves indicate the illuminated area and the average illumination when the luminaire is at different distance.

C Range: 0 - 360DEG
 C Interval: 22.5DEG
 Test Speed: HIGH
 Temperature: 25.3DEG
 Test Date: 2023-08-10

Range: 0 - 180DEG
 Interval: 1.0DEG
 Test System: EVERFINE GO-2000B_V1 SYSTEM V2.00.454
 Humidity: 65.0%
 Test Distance: 6.020m [K=1.0000]
 Remarks:

Planar Illuminance Curve



C Range: 0 - 360DEG
 C Interval: 22.5DEG
 Test Speed: HIGH
 Temperature: 25.3DEG
 Test Date: 2023-08-10

Range: 0 - 180DEG
 Interval: 1.0DEG
 Test System: EVERFINE GO-2000B_V1 SYSTEM V2.00.454
 Humidity: 65.0%
 Test Distance: 6.020m [K=1.0000]
 Remarks:

LUMINOUS DISTRIBUTION INTENSITY DATA

Test:U:12.000V I:0.0198A P:0.2376W PF:1.0000 Freq:50.00Hz Lamp Flux:4.56639x1 lm		
NAME: MOD-RGB	TYPE: LED Module	WEIGHT:
SPEC.: 0.72W	DIM.: 66*22*11 (MM)	SERIAL No.: 001
MFR.: Flexfire LEDs, Inc.	SUR.:	Shielding Angle: 160

Table--1

UNIT: cd

C (DEG) □ (DEG)	0	22.5	45	67.5	90	112.5	135	157.5	180	202.5	225	247.5	270	292.5	315	337.5			
0	0.50	0.50	0.50	0.50	0.50	0.50	0.50	0.50	0.50	0.50	0.50	0.50	0.50	0.50	0.50	0.50			
5	0.51	0.52	0.50	0.49	0.48	0.48	0.48	0.49	0.49	0.48	0.51	0.50	0.50	0.51	0.51	0.51			
10	0.52	0.54	0.51	0.51	0.48	0.49	0.51	0.51	0.49	0.49	0.51	0.51	0.52	0.51	0.52	0.51			
15	0.57	0.55	0.53	0.55	0.51	0.53	0.51	0.52	0.51	0.49	0.54	0.52	0.54	0.54	0.54	0.54			
20	0.59	0.57	0.57	0.58	0.54	0.56	0.56	0.55	0.56	0.57	0.57	0.56	0.57	0.57	0.58	0.58			
25	0.63	0.62	0.60	0.60	0.57	0.62	0.58	0.61	0.59	0.56	0.59	0.59	0.60	0.60	0.62	0.61			
30	0.68	0.67	0.63	0.65	0.61	0.65	0.63	0.63	0.61	0.61	0.64	0.64	0.66	0.67	0.67	0.66			
35	0.71	0.70	0.66	0.69	0.64	0.69	0.67	0.68	0.68	0.64	0.69	0.71	0.70	0.70	0.70	0.70			
40	0.77	0.76	0.76	0.75	0.71	0.74	0.70	0.73	0.70	0.70	0.72	0.76	0.76	0.74	0.76	0.73			
45	0.84	0.82	0.77	0.80	0.77	0.78	0.76	0.76	0.75	0.75	0.81	0.83	0.81	0.77	0.78	0.79			
50	0.92	0.92	0.83	0.84	0.84	0.85	0.80	0.84	0.80	0.83	0.86	0.85	0.89	0.83	0.87	0.88			
55	0.96	0.95	0.95	0.91	0.92	0.90	0.88	0.89	0.87	0.85	0.90	0.95	0.91	0.91	0.94	1.01			
60	0.97	0.98	0.98	1.00	0.99	1.02	0.96	0.98	0.94	0.90	0.94	0.98	0.92	0.86	0.94	0.98			
65	0.92	0.88	0.97	1.01	1.03	1.05	1.01	1.03	0.98	0.95	0.91	0.94	0.88	0.81	0.86	0.90			
70	0.74	0.74	0.85	0.89	1.00	0.99	1.02	1.02	0.99	0.95	0.85	0.84	0.80	0.77	0.72	0.78			
75	0.52	0.55	0.65	0.72	0.81	0.87	0.87	0.90	0.91	0.85	0.72	0.73	0.62	0.57	0.54	0.58			
80	0.29	0.32	0.42	0.52	0.35	0.64	0.68	0.72	0.74	0.68	0.58	0.52	0.29	0.40	0.36	0.36			
85	0.14	0.14	0.21	0.26	0.15	0.40	0.46	0.48	0.57	0.50	0.40	0.34	0.11	0.23	0.19	0.18			
90	0.08	0.06	0.09	0.04	0.05	0.19	0.24	0.27	0.33	0.29	0.21	0.15	0.04	0.08	0.05	0.08			
95	0.06	0.04	0.06	0.04	0.02	0.05	0.09	0.10	0.14	0.13	0.08	0.06	0.01	0.02	0.02	0.05			
100	0.05	0.04	0.05	0.03	0.02	0.04	0.06	0.04	0.06	0.07	0.04	0.04	0.01	0.02	0.02	0.03			
105	0.05	0.04	0.03	0.02	0.02	0.03	0.05	0.04	0.04	0.05	0.04	0.04	0.01	0.02	0.02	0.03			
110	0.04	0.05	0.03	0.02	0.02	0.03	0.04	0.04	0.04	0.05	0.04	0.03	0.01	0.02	0.02	0.03			
115	0.04	0.03	0.02	0.03	0.02	0.03	0.04	0.04	0.04	0.04	0.04	0.03	0.01	0.02	0.02	0.03			
120	0.04	0.05	0.02	0.02	0.02	0.02	0.04	0.02	0.04	0.04	0.04	0.02	0.01	0.02	0.02	0.03			
125	0.05	0.05	0.03	0.02	0.02	0.02	0.03	0.02	0.04	0.04	0.03	0.03	0.01	0.02	0.02	0.02			
130	0.04	0.05	0.03	0.02	0.02	0.02	0.03	0.02	0.04	0.03	0.03	0.02	0.01	0.02	0.02	0.02			
135	0.04	0.04	0.03	0.02	0.02	0.02	0.03	0.02	0.04	0.03	0.03	0.02	0.01	0.02	0.02	0.02			
140	0.05	0.05	0.02	0.02	0.02	0.02	0.02	0.02	0.03	0.03	0.04	0.01	0.01	0.02	0.02	0.02			
145	0.05	0.05	0.02	0.02	0.02	0.02	0.02	0.02	0.03	0.03	0.04	0.01	0.01	0.02	0.02	0.02			
150	0.04	0.03	0.02	0.02	0.02	0.02	0.02	0.02	0.04	0.05	0.03	0.01	0.01	0.02	0.02	0.02			
155	0.02	0.02	0.02	0.02	0.02	0.02	0.02	0.02	0.02	0.02	0.02	0.01	0.01	0.02	0.02	0.02			
160	0.02	0.02	0.02	0.02	0.02	0.02	0.02	0.02	0.03	0.02	0.02	0.01	0.01	0.02	0.02	0.02			
165	0.02	0.02	0.02	0.02	0.02	0.02	0.02	0.02	0.02	0.02	0.02	0.01	0.01	0.02	0.02	0.02			
170	0.02	0.02	0.02	0.02	0.02	0.02	0.02	0.02	0.02	0.02	0.02	0.01	0.01	0.02	0.02	0.02			
175	0.02	0.02	0.02	0.02	0.02	0.02	0.02	0.02	0.02	0.02	0.02	0.01	0.01	0.02	0.02	0.02			
180	0.02	0.02	0.02	0.02	0.02	0.02	0.02	0.02	0.02	0.02	0.02	0.01	0.01	0.02	0.02	0.02			

C Range: 0 - 360DEG
 C Interval: 22.5DEG
 Test Speed: HIGH
 Temperature:25.3DEG
 Test Date:2023-08-10

□ Range: 0 - 180DEG
 □ Interval: 1.0DEG
 Test System:EVERFINE GO-2000B_V1 SYSTEM V2.00.454
 Humidity:65.0%
 Test Distance:6.020m [K=1.0000]
 Remarks: