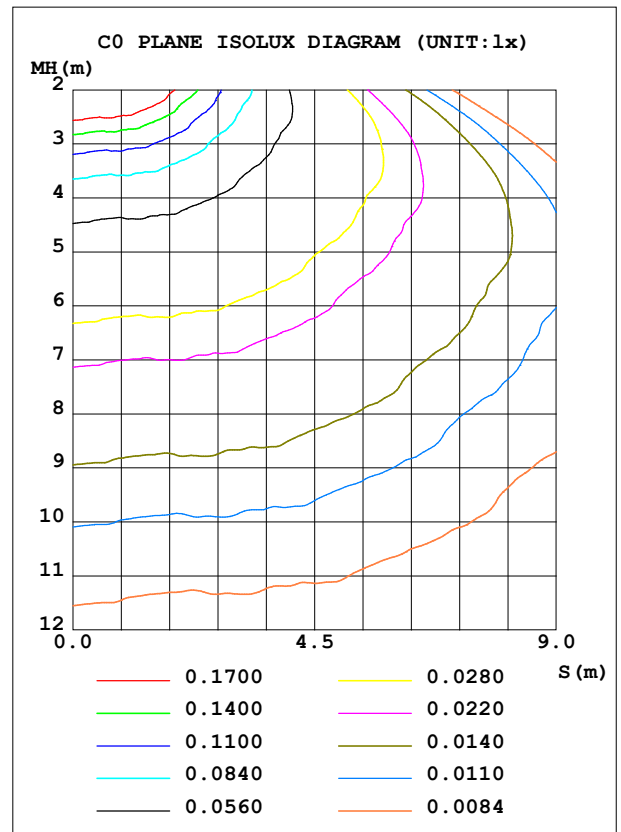
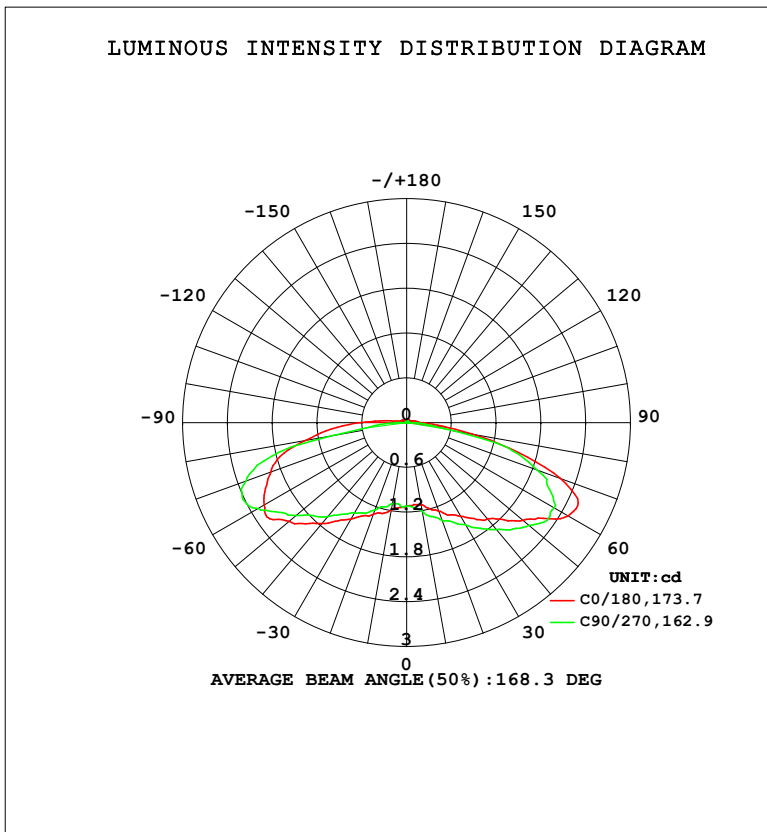


LUMINAIRE PHOTOMETRIC TEST REPORT

Test:U:12.000V I:0.0203A P:0.2436W PF:1.0000 Freq:50.00Hz Lamp Flux:10.8021x1 lm		
NAME: MOD-RGB	TYPE: LED Module	WEIGHT:
SPEC.: 0.72W	DIM.: 66*22*11 (MM)	SERIAL No.: 001
MFR.: Flexfire LEDs, Inc.	SUR.:	Shielding Angle: 160

DATA OF LAMP		PHOTOMETRIC DATA			
MODEL	MOD-RGB	Imax (cd)	2.780	S/MH	2.35
NOMINAL POWER (W)	0.72	LOR (%)	100.0		
RATED VOLTAGE (V)	12	TOTAL FLUX (lm)	10.802	<input type="checkbox"/> UP, DN (C0-180)	1.5, 47.3
NOMINAL FLUX (lm)	10.8021	CIE CLASS	DIRECT	<input type="checkbox"/> UP, DN (C180-360)	1.9, 49.3
LAMPS INSIDE	1	<input type="checkbox"/> up (%)	3.4	CIBSE SHR NOM	2.00
TEST VOLTAGE (V)	12	<input type="checkbox"/> down (%)	96.6	CIBSE SHR MAX	2.00



C Range: 0 - 360DEG  
 C Interval: 22.5DEG  
 Test Speed: HIGH  
 Temperature: 25.3DEG  
 Test Date: 2023-08-10

Range: 0 - 180DEG  
 Interval: 1.0DEG  
 Test System: EVERFINE GO-2000B\_V1 SYSTEM V2.00.454  
 Humidity: 65.0%  
 Test Distance: 6.020m [K=1.0000]  
 Remarks:

**ZONAL FLUX DIAGRAM**

ZONAL FLUX DIAGRAM:

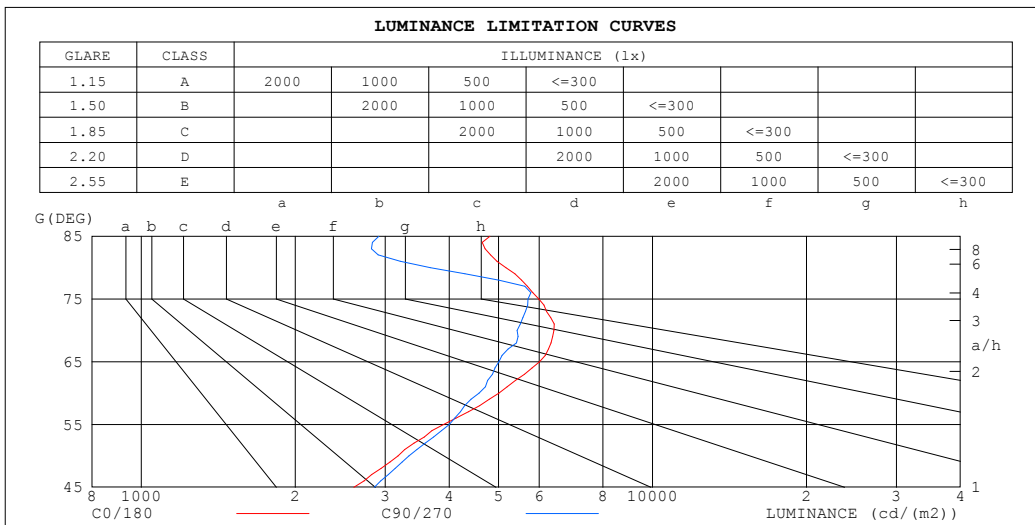
°	C0	C45	C90	C135	C180	C225	C270	C315	°	□ zone	□ total	%lum,lamp
10	1.122	1.172	1.203	1.239	1.189	1.141	1.103	1.145	0- 10	0.1091	0.1091	1.01,1.01
20	1.265	1.334	1.398	1.401	1.307	1.251	1.249	1.251	10- 20	0.3516	0.4607	4.26,4.26
30	1.452	1.500	1.579	1.601	1.490	1.465	1.396	1.410	20- 30	0.6461	1.107	10.2,10.2
40	1.683	1.764	1.870	1.918	1.764	1.700	1.640	1.662	30- 40	1.014	2.120	19.6,19.6
50	2.040	2.125	2.144	2.198	2.060	1.989	1.937	1.973	40- 50	1.472	3.593	33.3,33.3
60	2.499	2.423	2.286	2.263	2.206	2.336	2.305	2.500	50- 60	1.994	5.587	51.7,51.7
70	2.191	2.027	1.857	1.973	1.936	2.094	2.294	2.637	60- 70	2.281	7.868	72.8,72.8
80	0.8969	0.9383	0.6378	1.294	1.373	1.514	1.003	1.317	70- 80	1.803	9.671	89.5,89.5
90	0.2060	0.1748	0.0896	0.4742	0.6225	0.5997	0.1544	0.2038	80- 90	0.7660	10.44	96.6,96.6
100	0.1206	0.0749	0.0208	0.1107	0.1369	0.1039	0.0187	0.0230	90-100	0.1767	10.61	98.3,98.3
110	0.0686	0.0354	0.0208	0.0730	0.0769	0.0561	0.0187	0.0209	100-110	0.0634	10.68	98.8,98.8
120	0.0332	0.0166	0.0208	0.0584	0.0665	0.0395	0.0187	0.0209	110-120	0.0404	10.72	99.2,99.2
130	0.0436	0.0166	0.0208	0.0396	0.0436	0.0374	0.0187	0.0209	120-130	0.0289	10.75	99.5,99.5
140	0.0416	0.0166	0.0208	0.0355	0.0436	0.0249	0.0187	0.0209	130-140	0.0224	10.77	99.7,99.7
150	0.0353	0.0166	0.0208	0.0313	0.0353	0.0187	0.0187	0.0209	140-150	0.0162	10.79	99.8,99.8
160	0.0208	0.0145	0.0208	0.0250	0.0187	0.0187	0.0187	0.0209	150-160	0.0098	10.79	99.9,99.9
170	0.0208	0.0125	0.0208	0.0209	0.0187	0.0187	0.0187	0.0209	160-170	0.0054	10.80	100,100
180	0.0187	0.0125	0.0208	0.0209	0.0187	0.0187	0.0187	0.0209	170-180	0.0018	10.80	100,100
DEG	LUMINOUS INTENSITY:cd									UNIT:lm		

C Range: 0 - 360DEG  
 C Interval: 22.5DEG  
 Test Speed: HIGH  
 Temperature:25.3DEG  
 Test Date:2023-08-10

□ Range: 0 - 180DEG  
 □ Interval: 1.0DEG  
 Test System:EVERFINE GO-2000B\_V1 SYSTEM V2.00.454  
 Humidity:65.0%  
 Test Distance:6.020m [K=1.0000]  
 Remarks:

**LUMINANCE LIMITATION CURVES**

Test:U:12.000V I:0.0203A P:0.2436W PF:1.0000 Freq:50.00Hz Lamp Flux:10.8021x1 lm		
NAME: MOD-RGB	TYPE: LED Module	WEIGHT:
SPEC.: 0.72W	DIM.: 66*22*11 (MM)	SERIAL No.: 001
MFR.: Flexfire LEDs, Inc.	SUR.:	Shielding Angle: 160



LUMINANCE cd/(m2)		
G (DEG)	C0/180	C90/270
85	4804	2916
80	5168	3674
75	5990	5707
70	6409	5431
65	6011	5004
60	5001	4573
55	3902	4001
50	3175	3337
45	2604	2854

C Range: 0 - 360DEG  
 C Interval: 22.5DEG  
 Test Speed: HIGH  
 Temperature:25.3DEG  
 Test Date:2023-08-10

Range: 0 - 180DEG  
 Interval: 1.0DEG  
 Test System:EVERFINE GO-2000B\_V1 SYSTEM V2.00.454  
 Humidity:65.0%  
 Test Distance:6.020m [K=1.0000]  
 Remarks:

**WEC AND CCEC**

Test:U:12.000V I:0.0203A P:0.2436W PF:1.0000 Freq:50.00Hz Lamp Flux:10.8021x1 lm								
NAME: MOD-RGB			TYPE: LED Module			WEIGHT:		
SPEC.: 0.72W			DIM.: 66*22*11 (MM)			SERIAL No.: 001		
MFR.: Flexfire LEDs, Inc.			SUR.:			Shielding Angle: 160		

<input type="checkbox"/> cc	80%		70%		50%		30%		10%		0				
<input type="checkbox"/> w	50%	30%	10%	50%	30%	10%	50%	30%	10%	50%	30%	10%	0		
<input type="checkbox"/> fc	20%		20%		20%		20%		20%		0				
RCR	RCR:Room Cavity Ratio						Wall Exitance Coefficients(WEC)								
0.0															
1.0	.446	.253	.080	.437	.249	.079	.421	.242	.077	.407	.235	.075	.393	.228	.073
2.0	.392	.215	.066	.385	.212	.065	.370	.206	.064	.357	.200	.063	.345	.195	.061
3.0	.347	.185	.055	.341	.182	.055	.328	.178	.054	.316	.173	.053	.305	.169	.052
4.0	.310	.161	.047	.304	.159	.047	.292	.155	.046	.281	.151	.046	.271	.147	.045
5.0	.279	.142	.041	.273	.140	.041	.263	.137	.040	.253	.134	.040	.244	.131	.039
6.0	.253	.127	.036	.248	.125	.036	.239	.122	.036	.230	.120	.035	.222	.117	.035
7.0	.231	.114	.032	.227	.113	.032	.218	.110	.032	.211	.108	.031	.203	.106	.031
8.0	.213	.104	.029	.209	.103	.029	.201	.101	.029	.194	.098	.028	.188	.096	.028
9.0	.197	.095	.027	.193	.094	.026	.186	.092	.026	.180	.090	.026	.174	.088	.026
10.0	.183	.088	.024	.180	.087	.024	.174	.085	.024	.168	.083	.024	.162	.082	.023

<input type="checkbox"/> cc	80%		70%		50%		30%		10%		0				
<input type="checkbox"/> w	50%	30%	10%	50%	30%	10%	50%	30%	10%	50%	30%	10%	0		
<input type="checkbox"/> fc	20%		20%		20%		20%		20%		0				
RCR	RCR:Room Cavity Ratio						Ceiling Cavity Exitance Coefficients(CCEC)								
0.0	.216	.216	.216	.185	.185	.185	.126	.126	.126	.072	.072	.072	.023	.023	.023
1.0	.216	.181	.150	.185	.155	.129	.126	.107	.089	.073	.062	.052	.023	.020	.017
2.0	.212	.158	.112	.181	.136	.097	.124	.094	.068	.072	.055	.040	.023	.018	.013
3.0	.206	.141	.090	.176	.122	.078	.121	.085	.055	.070	.049	.032	.022	.016	.011
4.0	.198	.129	.076	.170	.111	.066	.117	.078	.046	.068	.045	.027	.022	.015	.009
5.0	.190	.119	.066	.163	.103	.058	.113	.072	.041	.065	.042	.024	.021	.014	.008
6.0	.182	.111	.060	.157	.096	.052	.108	.067	.037	.063	.040	.022	.020	.013	.007
7.0	.174	.104	.055	.150	.090	.048	.104	.063	.034	.060	.037	.020	.019	.012	.007
8.0	.167	.099	.052	.144	.086	.045	.099	.060	.032	.058	.035	.019	.019	.012	.006
9.0	.160	.094	.049	.138	.081	.043	.095	.057	.030	.056	.034	.018	.018	.011	.006
10.0	.153	.089	.047	.132	.078	.041	.092	.055	.029	.053	.032	.017	.017	.011	.006

C Range: 0 - 360DEG  
 C Interval: 22.5DEG  
 Test Speed: HIGH  
 Temperature:25.3DEG  
 Test Date:2023-08-10

Range: 0 - 180DEG  
 Interval: 1.0DEG  
 Test System:EVERFINE GO-2000B\_V1 SYSTEM V2.00.454  
 Humidity:65.0%  
 Test Distance:6.020m [K=1.0000]  
 Remarks:

**UGR(Unified Glare Rating) Table**

Test:U:12.000V I:0.0203A P:0.2436W PF:1.0000 Freq:50.00Hz Lamp Flux:10.8021x1 lm										
NAME: MOD-RGB			TYPE: LED Module			WEIGHT:				
SPEC.: 0.72W			DIM.: 66*22*11 (MM)			SERIAL No.: 001				
MFR.: Flexfire LEDs, Inc.			SUR.:			Shielding Angle: 160				
ceiling/cavity	0.7	0.7	0.5	0.5	0.3	0.7	0.7	0.5	0.5	0.3
walls	0.5	0.3	0.5	0.3	0.3	0.5	0.3	0.5	0.3	0.3
working plane	0.2	0.2	0.2	0.2	0.2	0.2	0.2	0.2	0.2	0.2
Room dimensions	Viewed crosswise					Viewed endwise				
x = 2H y = 2H	0.9	4.6	1.7	5.3	6.0	0.5	4.2	1.3	4.9	5.6
3H	3.9	7.3	4.7	8.0	8.8	3.2	6.6	4.0	7.3	8.1
4H	4.8	8.1	5.7	8.9	9.7	4.2	7.5	5.1	8.2	9.1
6H	5.4	8.5	6.3	9.3	10.1	4.8	7.9	5.7	8.7	9.5
8H	5.6	8.5	6.4	9.4	10.2	4.9	7.9	5.8	8.7	9.5
12H	5.7	8.5	6.6	9.4	10.3	4.9	7.8	5.8	8.6	9.5
4H 2H	1.6	4.8	2.4	5.6	6.4	1.1	4.3	1.9	5.1	5.9
3H	4.6	7.5	5.5	8.3	9.2	3.9	6.8	4.8	7.6	8.5
4H	5.7	8.3	6.6	9.2	10.1	5.2	7.8	6.1	8.7	9.6
6H	6.4	8.8	7.3	9.7	10.7	6.0	8.4	7.0	9.3	10.3
8H	6.6	8.8	7.6	9.8	10.8	6.2	8.4	7.2	9.4	10.4
12H	6.7	8.8	7.8	9.8	10.8	6.3	8.4	7.3	9.3	10.4
8H 4H	5.9	8.2	6.9	9.1	10.1	5.7	8.0	6.7	8.9	9.9
6H	6.8	8.7	7.8	9.7	10.8	6.8	8.7	7.9	9.8	10.8
8H	7.1	8.8	8.2	9.9	11.0	7.2	8.9	8.3	10.0	11.1
12H	7.4	8.9	8.4	9.9	11.1	7.5	9.1	8.6	10.1	11.3
12H 4H	6.0	8.0	7.0	9.0	10.1	5.8	7.9	6.8	8.9	9.9
6H	6.9	8.6	8.0	9.6	10.8	7.1	8.8	8.1	9.8	10.9
8H	7.3	8.8	8.3	9.8	11.0	7.6	9.1	8.7	10.1	11.3
CIE190: 2010										

CIE190: 2010  
Area: 0.001 m2

C Range: 0 - 360DEG  
C Interval: 22.5DEG  
Test Speed: HIGH  
Temperature:25.3DEG  
Test Date:2023-08-10

Range: 0 - 180DEG  
 Interval: 1.0DEG  
Test System:EVERFINE GO-2000B\_V1 SYSTEM V2.00.454  
Humidity:65.0%  
Test Distance:6.020m [K=1.0000]  
Remarks:

**UTILIZATION FACTORS TABLE**

Test:U:12.000V I:0.0203A P:0.2436W PF:1.0000 Freq:50.00Hz Lamp Flux:10.8021x1 lm		
NAME: MOD-RGB	TYPE: LED Module	WEIGHT:
SPEC.: 0.72W	DIM.: 66*22*11 (MM)	SERIAL No.: 001
MFR.: Flexfire LEDs, Inc.	SUR.:	Shielding Angle: 160

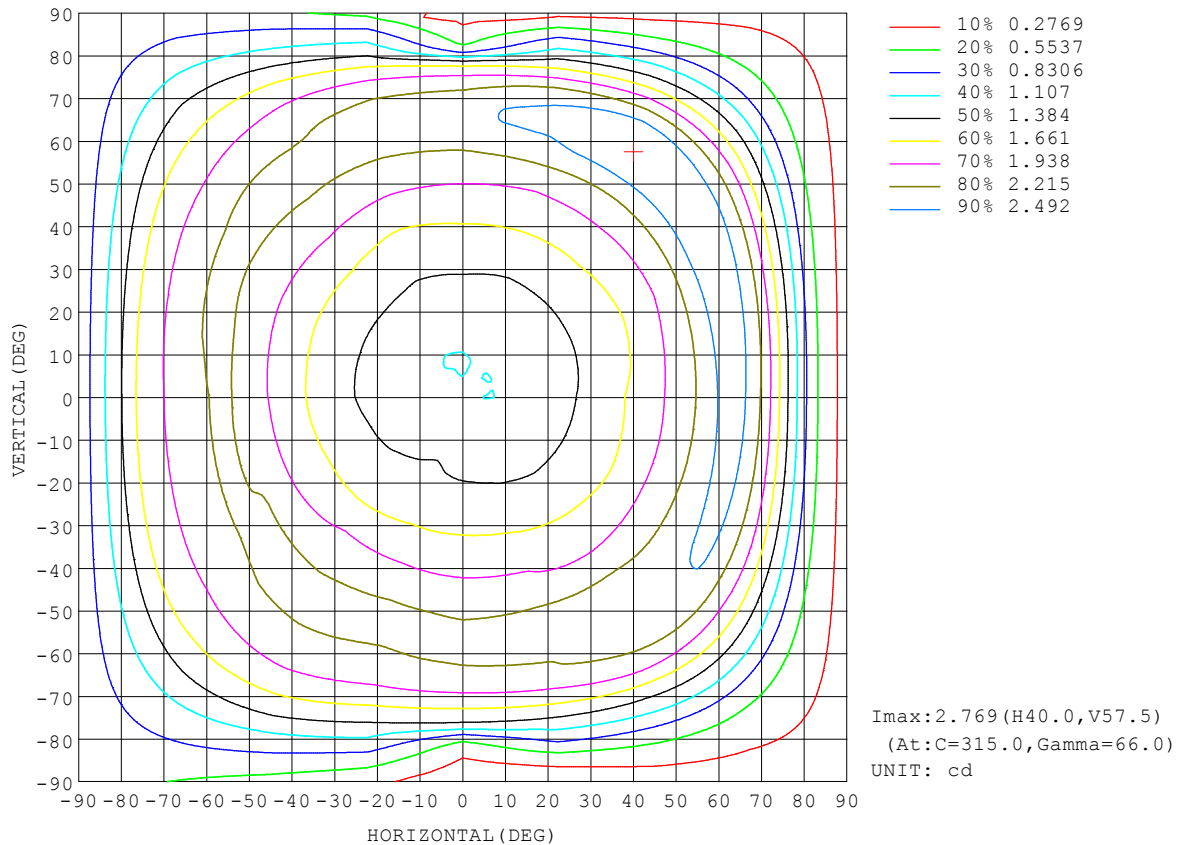
REFLECTANCE										
Ceiling	0.8	0.8	0.8	0.7	0.7	0.7	0.5	0.5	0.5	0
Walls	0.7	0.5	0.3	0.7	0.5	0.3	0.7	0.5	0.3	0
Working plane	0.2	0.2	0.2	0.2	0.2	0.2	0.2	0.2	0.2	0
ROOM INDEX	UTILIZATION FACTORS (PERCENT) $k(RI) \times RCR = 5$									
k = 0.60	44	30	22	43	30	22	41	29	21	14
0.80	53	38	29	52	38	29	49	37	29	20
1.00	61	47	37	60	46	37	57	48	36	27
1.25	69	55	45	67	54	44	63	52	44	34
1.50	75	61	51	72	60	51	69	58	49	39
2.00	83	71	62	81	69	61	76	67	59	49
2.50	89	77	69	86	76	68	81	73	66	55
3.00	93	83	75	90	81	74	85	78	71	60
4.00	99	90	83	96	88	82	91	84	79	68
5.00	102	95	89	99	93	87	94	88	84	72
ROOM INDEX	UF(total)									Direct
According to DIN EN 13032-2 2004			Suspended				SHRNOM = 1.25			

C Range: 0 - 360DEG  
 C Interval: 22.5DEG  
 Test Speed: HIGH  
 Temperature:25.3DEG  
 Test Date:2023-08-10

Range: 0 - 180DEG  
 Interval: 1.0DEG  
 Test System:EVERFINE GO-2000B\_V1 SYSTEM V2.00.454  
 Humidity:65.0%  
 Test Distance:6.020m [K=1.0000]  
 Remarks:

**ISOCANDELA DIAGRAM**

Test:U:12.000V I:0.0203A P:0.2436W PF:1.0000 Freq:50.00Hz Lamp Flux:10.8021x1 lm		
NAME: MOD-RGB	TYPE: LED Module	WEIGHT:
SPEC.: 0.72W	DIM.: 66*22*11 (MM)	SERIAL No.: 001
MFR.: Flexfire LEDs, Inc.	SUR.:	Shielding Angle: 160

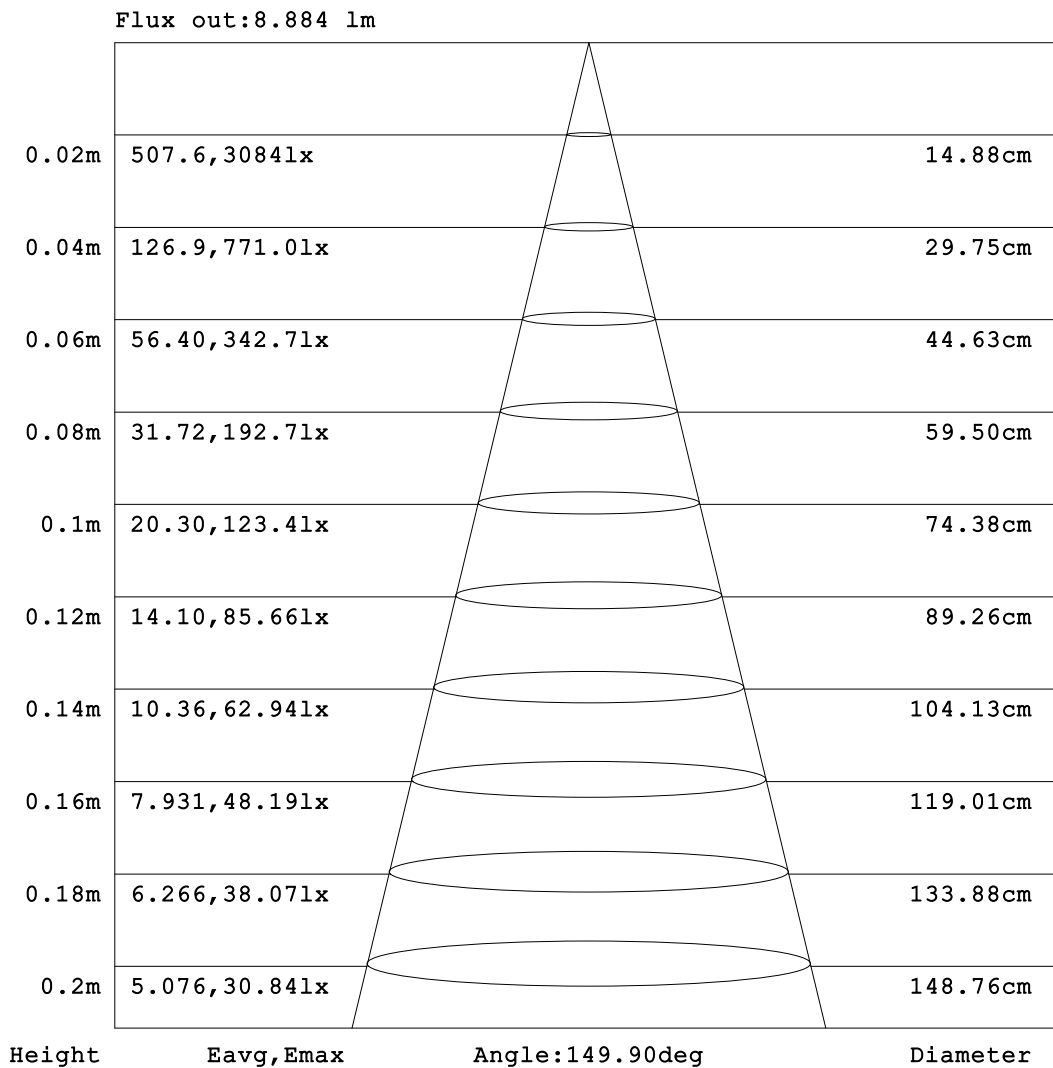


C Range: 0 - 360DEG  
 C Interval: 22.5DEG  
 Test Speed: HIGH  
 Temperature: 25.3DEG  
 Test Date: 2023-08-10

Range: 0 - 180DEG  
 Interval: 1.0DEG  
 Test System: EVERFINE GO-2000B\_V1 SYSTEM V2.00.454  
 Humidity: 65.0%  
 Test Distance: 6.020m [K=1.0000]  
 Remarks:

**AAI Figure**

Test:U:12.000V I:0.0203A P:0.2436W PF:1.0000 Freq:50.00Hz Lamp Flux:10.8021x1 lm		
NAME: MOD-RGB	TYPE: LED Module	WEIGHT:
SPEC.: 0.72W	DIM.: 66*22*11 (MM)	SERIAL No.: 001
MFR.: Flexfire LEDs, Inc.	SUR.:	Shielding Angle: 160



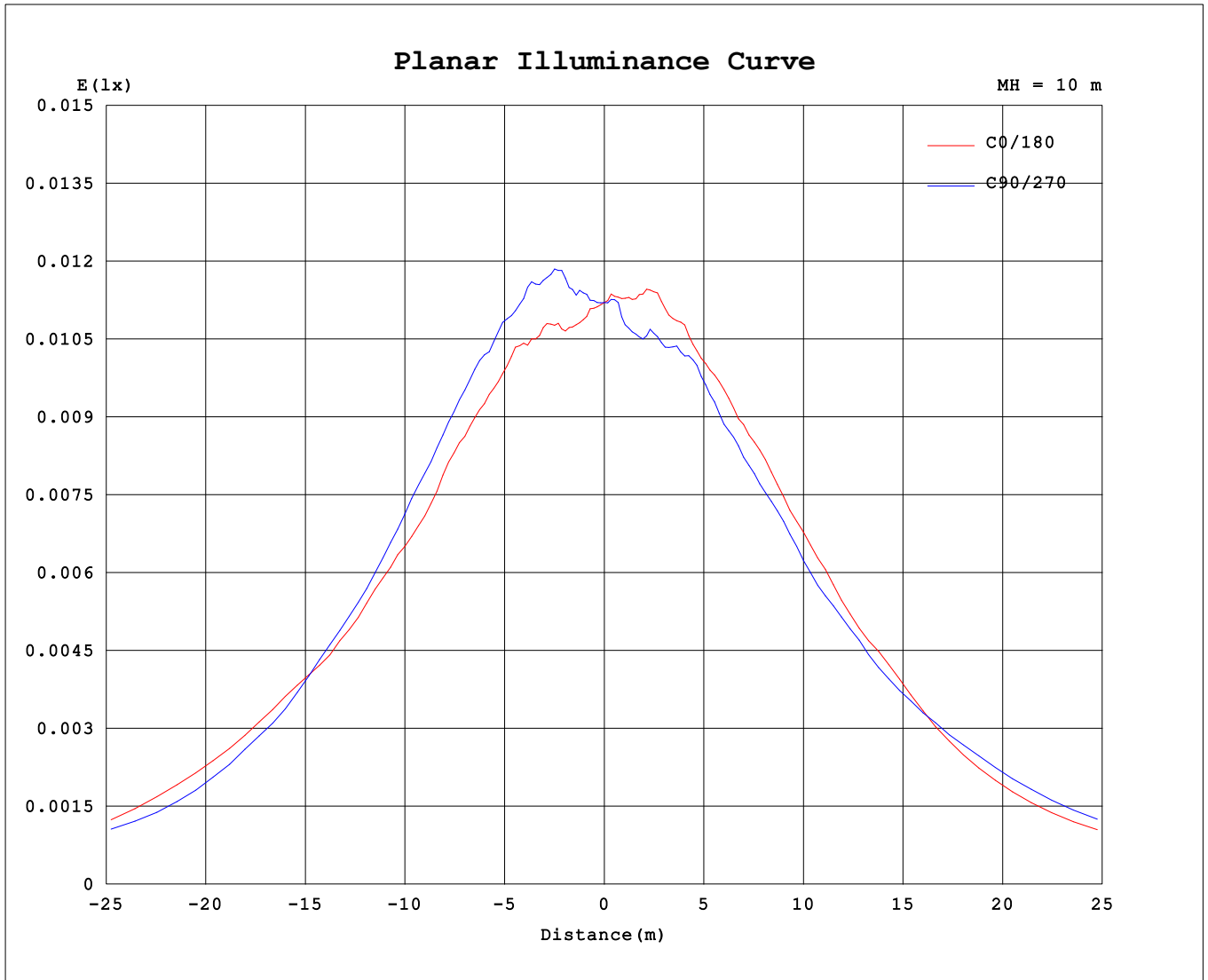
Note: The Curves indicate the illuminated area and the average illumination when the luminaire is at different distance.

C Range: 0 - 360DEG  
 C Interval: 22.5DEG  
 Test Speed: HIGH  
 Temperature:25.3DEG  
 Test Date:2023-08-10

Range: 0 - 180DEG  
 Interval: 1.0DEG  
 Test System:EVERFINE GO-2000B\_V1 SYSTEM V2.00.454  
 Humidity:65.0%  
 Test Distance:6.020m [K=1.0000]  
 Remarks:



Planar Illuminance Curve



C Range: 0 - 360DEG  
 C Interval: 22.5DEG  
 Test Speed: HIGH  
 Temperature:25.3DEG  
 Test Date:2023-08-10

Range: 0 - 180DEG  
 Interval: 1.0DEG  
 Test System:EVERFINE GO-2000B\_V1 SYSTEM V2.00.454  
 Humidity:65.0%  
 Test Distance:6.020m [K=1.0000]  
 Remarks:

LUMINOUS DISTRIBUTION INTENSITY DATA

Test:U:12.000V I:0.0203A P:0.2436W PF:1.0000 Freq:50.00Hz Lamp Flux:10.8021x1 lm		
NAME: MOD-RGB	TYPE: LED Module	WEIGHT:
SPEC.: 0.72W	DIM.: 66*22*11 (MM)	SERIAL No.: 001
MFR.: Flexfire LEDs, Inc.	SUR.:	Shielding Angle: 160

Table--1

UNIT: cd

C (DEG) □ (DEG)	0	22.5	45	67.5	90	112.5	135	157.5	180	202.5	225	247.5	270	292.5	315	337.5			
0	1.12	1.12	1.12	1.12	1.12	1.12	1.12	1.12	1.12	1.12	1.12	1.12	1.12	1.12	1.12	1.12			
5	1.11	1.12	1.13	1.17	1.15	1.18	1.17	1.17	1.14	1.12	1.12	1.12	1.11	1.14	1.12	1.11			
10	1.12	1.17	1.17	1.21	1.20	1.23	1.24	1.21	1.19	1.14	1.14	1.10	1.10	1.11	1.14	1.11			
15	1.20	1.24	1.24	1.26	1.30	1.36	1.31	1.28	1.26	1.21	1.20	1.14	1.17	1.17	1.19	1.18			
20	1.27	1.32	1.33	1.36	1.40	1.42	1.40	1.35	1.31	1.27	1.25	1.26	1.25	1.23	1.25	1.26			
25	1.37	1.39	1.40	1.45	1.47	1.50	1.46	1.44	1.38	1.37	1.34	1.31	1.34	1.31	1.33	1.33			
30	1.45	1.49	1.50	1.60	1.58	1.60	1.60	1.55	1.49	1.46	1.47	1.41	1.40	1.38	1.41	1.41			
35	1.57	1.60	1.63	1.70	1.73	1.74	1.71	1.67	1.61	1.60	1.57	1.52	1.50	1.47	1.52	1.50			
40	1.68	1.75	1.76	1.86	1.87	1.89	1.92	1.80	1.76	1.72	1.70	1.63	1.64	1.62	1.66	1.62			
45	1.84	1.92	1.90	1.98	2.02	2.05	2.04	1.98	1.92	1.86	1.88	1.77	1.76	1.75	1.80	1.78			
50	2.04	2.09	2.12	2.17	2.14	2.21	2.20	2.18	2.06	2.07	1.99	1.95	1.94	1.92	1.97	1.95			
55	2.24	2.32	2.31	2.34	2.29	2.30	2.32	2.22	2.24	2.20	2.17	2.11	2.10	2.12	2.18	2.18			
60	2.50	2.50	2.42	2.32	2.29	2.20	2.26	2.19	2.21	2.32	2.34	2.30	2.31	2.39	2.50	2.51			
65	2.54	2.49	2.31	2.20	2.11	2.07	2.08	2.06	2.09	2.20	2.30	2.43	2.42	2.56	2.78	2.62			
70	2.19	2.06	2.03	1.92	1.86	1.87	1.97	1.90	1.94	2.03	2.09	2.28	2.29	2.47	2.64	2.41			
75	1.55	1.52	1.48	1.49	1.48	1.56	1.69	1.68	1.76	1.80	1.90	1.98	1.97	2.05	2.04	1.83			
80	0.90	0.90	0.94	0.98	0.64	1.14	1.29	1.35	1.37	1.50	1.51	1.46	1.00	1.39	1.32	1.13			
85	0.42	0.40	0.44	0.41	0.25	0.71	0.85	0.93	1.02	1.06	1.03	0.99	0.39	0.79	0.66	0.54			
90	0.21	0.16	0.17	0.12	0.09	0.35	0.47	0.55	0.62	0.65	0.60	0.48	0.15	0.22	0.20	0.20			
95	0.15	0.11	0.11	0.04	0.02	0.11	0.21	0.25	0.31	0.32	0.26	0.16	0.02	0.03	0.02	0.12			
100	0.12	0.09	0.07	0.04	0.02	0.07	0.11	0.11	0.14	0.15	0.10	0.09	0.02	0.04	0.02	0.07			
105	0.09	0.08	0.05	0.01	0.02	0.04	0.09	0.07	0.09	0.10	0.07	0.07	0.02	0.04	0.02	0.07			
110	0.07	0.05	0.04	0.01	0.02	0.02	0.07	0.07	0.08	0.09	0.06	0.06	0.02	0.03	0.02	0.06			
115	0.05	0.04	0.02	0.01	0.02	0.02	0.06	0.06	0.07	0.08	0.05	0.06	0.02	0.02	0.02	0.05			
120	0.03	0.03	0.02	0.01	0.02	0.02	0.06	0.04	0.07	0.08	0.04	0.05	0.02	0.02	0.02	0.03			
125	0.04	0.03	0.02	0.01	0.02	0.02	0.05	0.04	0.05	0.07	0.04	0.04	0.02	0.02	0.02	0.03			
130	0.04	0.04	0.02	0.01	0.02	0.02	0.04	0.03	0.04	0.06	0.04	0.03	0.02	0.02	0.02	0.03			
135	0.04	0.04	0.02	0.01	0.02	0.02	0.04	0.03	0.04	0.05	0.03	0.03	0.02	0.02	0.02	0.03			
140	0.04	0.03	0.02	0.01	0.02	0.02	0.04	0.03	0.04	0.05	0.02	0.03	0.02	0.02	0.02	0.03			
145	0.04	0.03	0.02	0.01	0.02	0.02	0.03	0.02	0.04	0.04	0.02	0.02	0.02	0.02	0.02	0.03			
150	0.04	0.03	0.02	0.01	0.02	0.02	0.03	0.02	0.04	0.04	0.02	0.03	0.02	0.02	0.02	0.03			
155	0.02	0.02	0.02	0.01	0.02	0.02	0.03	0.02	0.02	0.02	0.02	0.02	0.02	0.02	0.02	0.02			
160	0.02	0.02	0.01	0.01	0.02	0.02	0.03	0.02	0.02	0.02	0.02	0.02	0.02	0.02	0.02	0.02			
165	0.02	0.02	0.02	0.01	0.02	0.02	0.02	0.02	0.02	0.02	0.02	0.02	0.02	0.02	0.02	0.02			
170	0.02	0.02	0.01	0.01	0.02	0.02	0.02	0.02	0.02	0.02	0.02	0.02	0.02	0.02	0.02	0.02			
175	0.02	0.02	0.01	0.01	0.02	0.02	0.02	0.02	0.02	0.02	0.02	0.02	0.02	0.02	0.02	0.02			
180	0.02	0.02	0.01	0.01	0.02	0.02	0.02	0.02	0.02	0.02	0.02	0.02	0.02	0.02	0.02	0.02			

C Range: 0 - 360DEG  
 C Interval: 22.5DEG  
 Test Speed: HIGH  
 Temperature:25.3DEG  
 Test Date:2023-08-10

□ Range: 0 - 180DEG  
 □ Interval: 1.0DEG  
 Test System:EVERFINE GO-2000B\_V1 SYSTEM V2.00.454  
 Humidity:65.0%  
 Test Distance:6.020m [K=1.0000]  
 Remarks: