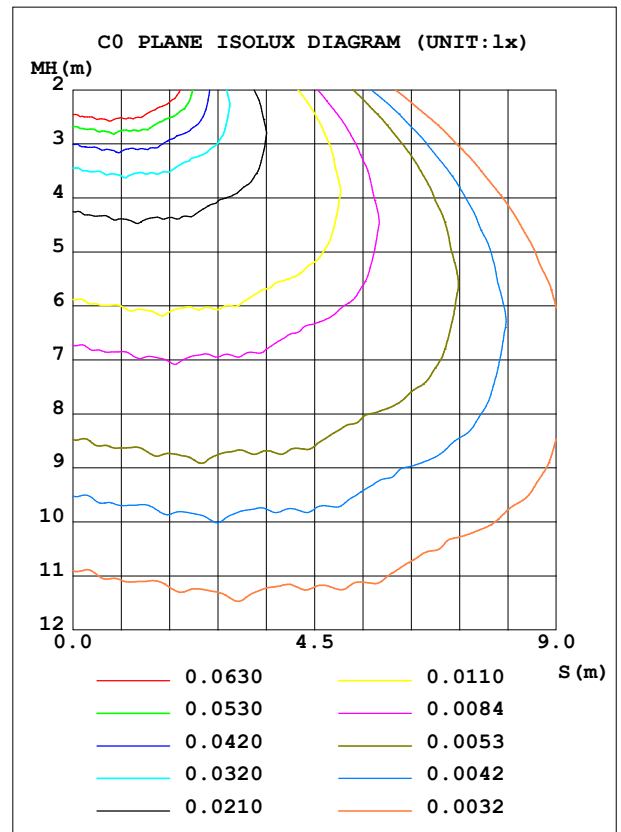
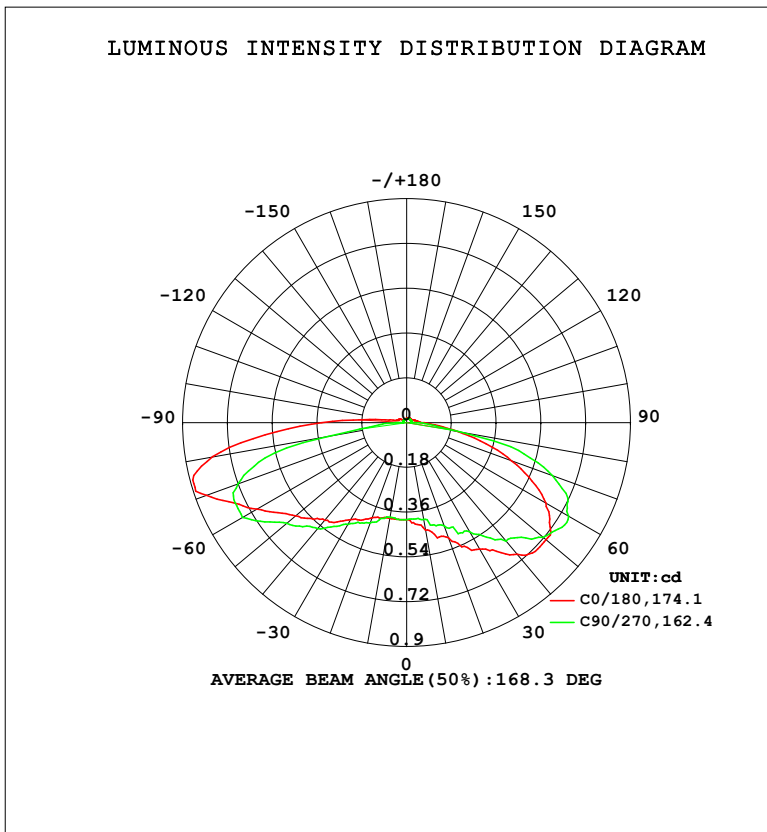


LUMINAIRE PHOTOMETRIC TEST REPORT

Test:U:12.000V I:0.0220A P:0.2640W PF:1.0000 Freq:50.00Hz Lamp Flux:3.6399x1 lm		
NAME: MOD-RGB	TYPE: LED Module	WEIGHT:
SPEC.: 0.72W	DIM.: 66*22*11 (MM)	SERIAL No.: 001
MFR.: Flexfire LEDs, Inc.	SUR.:	Shielding Angle: 160

DATA OF LAMP		PHOTOMETRIC DATA			
MODEL	MOD-RGB	Imax (cd)	0.9254	S/MH	2.23
NOMINAL POWER (W)	0.72	LOR (%)	100.0		
RATED VOLTAGE (V)	12	TOTAL FLUX (lm)	3.6399	<input type="checkbox"/> UP, DN (C0-180)	2.2, 46.3
NOMINAL FLUX (lm)	3.6399	CIE CLASS	DIRECT	<input type="checkbox"/> UP, DN (C180-360)	2.8, 48.7
LAMPS INSIDE	1	<input type="checkbox"/> up (%)	5.0	CIBSE SHR NOM	2.00
TEST VOLTAGE (V)	12	<input type="checkbox"/> down (%)	95.0	CIBSE SHR MAX	2.00



C Range: 0 - 360DEG
 C Interval: 22.5DEG
 Test Speed: HIGH
 Temperature: 25.3DEG
 Test Date: 2023-08-10

Range: 0 - 180DEG
 Interval: 1.0DEG
 Test System: EVERFINE GO-2000B_V1 SYSTEM V2.00.454
 Humidity: 65.0%
 Test Distance: 6.020m [K=1.0000]
 Remarks:

ZONAL FLUX DIAGRAM

ZONAL FLUX DIAGRAM:

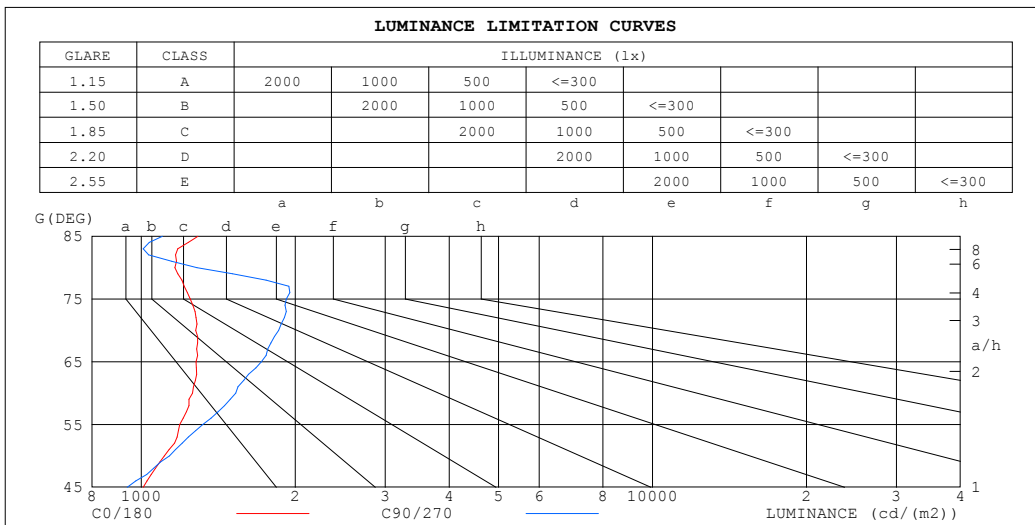
°	C0	C45	C90	C135	C180	C225	C270	C315	°	□ zone	□ total	%lum,lamp
10	0.4395	0.4415	0.3947	0.3844	0.3906	0.3927	0.3865	0.4049	0- 10	0.0379	0.0379	1.04,1.04
20	0.4929	0.4860	0.4416	0.3987	0.4077	0.4076	0.4294	0.4540	10- 20	0.1197	0.1576	4.33,4.33
30	0.5869	0.5731	0.5070	0.4621	0.4504	0.4564	0.4724	0.5317	20- 30	0.2199	0.3775	10.4,10.4
40	0.6914	0.6853	0.6214	0.5417	0.5122	0.5159	0.5562	0.6116	30- 40	0.3445	0.7220	19.8,19.8
50	0.7320	0.7302	0.7176	0.6542	0.5827	0.5966	0.6299	0.7424	40- 50	0.4894	1.211	33.3,33.3
60	0.6468	0.6560	0.7525	0.7810	0.6960	0.7261	0.7627	0.7218	50- 60	0.6234	1.835	50.4,50.4
70	0.4485	0.5012	0.6239	0.8732	0.8560	0.8833	0.7216	0.5723	60- 70	0.7025	2.537	69.7,69.7
80	0.2073	0.2486	0.2195	0.5935	0.7914	0.7276	0.3201	0.2941	70- 80	0.6181	3.155	86.7,86.7
90	0.0683	0.0723	0.0410	0.1968	0.3410	0.2733	0.0467	0.0489	80- 90	0.3031	3.459	95,95
100	0.0406	0.0340	0.0184	0.0532	0.0682	0.0403	0.0164	0.0143	90-100	0.0732	3.532	97,97
110	0.0299	0.0234	0.0184	0.0327	0.0363	0.0191	0.0164	0.0143	100-110	0.0297	3.562	97.8,97.8
120	0.0214	0.0191	0.0184	0.0205	0.0299	0.0170	0.0164	0.0143	110-120	0.0227	3.584	98.5,98.5
130	0.0213	0.0191	0.0184	0.0184	0.0171	0.0170	0.0164	0.0143	120-130	0.0171	3.601	98.9,98.9
140	0.0213	0.0191	0.0184	0.0184	0.0171	0.0170	0.0164	0.0143	130-140	0.0138	3.615	99.3,99.3
150	0.0213	0.0191	0.0184	0.0143	0.0171	0.0170	0.0164	0.0143	140-150	0.0109	3.626	99.6,99.6
160	0.0192	0.0191	0.0184	0.0123	0.0171	0.0170	0.0164	0.0143	150-160	0.0078	3.634	99.8,99.8
170	0.0192	0.0191	0.0164	0.0123	0.0171	0.0170	0.0164	0.0143	160-170	0.0046	3.638	100,100
180	0.0192	0.0170	0.0164	0.0102	0.0171	0.0170	0.0164	0.0143	170-180	0.0015	3.640	100,100
DEG	LUMINOUS INTENSITY:cd									UNIT:lm		

C Range: 0 - 360DEG
 C Interval: 22.5DEG
 Test Speed: HIGH
 Temperature:25.3DEG
 Test Date:2023-08-10

□ Range: 0 - 180DEG
 □ Interval: 1.0DEG
 Test System:EVERFINE GO-2000B_V1 SYSTEM V2.00.454
 Humidity:65.0%
 Test Distance:6.020m [K=1.0000]
 Remarks:

LUMINANCE LIMITATION CURVES

Test:U:12.000V I:0.0220A P:0.2640W PF:1.0000 Freq:50.00Hz Lamp Flux:3.6399x1 lm		
NAME: MOD-RGB	TYPE: LED Module	WEIGHT:
SPEC.: 0.72W	DIM.: 66*22*11 (MM)	SERIAL No.: 001
MFR.: Flexfire LEDs, Inc.	SUR.:	Shielding Angle: 160



LUMINANCE cd/(m2)		
G (DEG)	C0/180	C90/270
85	1290	1099
80	1163	1285
75	1246	1921
70	1277	1854
65	1279	1717
60	1260	1530
55	1189	1319
50	1109	1135
45	1008	938

C Range: 0 - 360DEG
 C Interval: 22.5DEG
 Test Speed: HIGH
 Temperature:25.3DEG
 Test Date:2023-08-10

Range: 0 - 180DEG
 Interval: 1.0DEG
 Test System:EVERFINE GO-2000B_V1 SYSTEM V2.00.454
 Humidity:65.0%
 Test Distance:6.020m [K=1.0000]
 Remarks:

WEC AND CCEC

Test:U:12.000V I:0.0220A P:0.2640W PF:1.0000 Freq:50.00Hz Lamp Flux:3.6399x1 lm								
NAME: MOD-RGB			TYPE: LED Module			WEIGHT:		
SPEC.: 0.72W			DIM.: 66*22*11 (MM)			SERIAL No.: 001		
MFR.: Flexfire LEDs, Inc.			SUR.:			Shielding Angle: 160		

<input type="checkbox"/> cc	80%		70%		50%		30%		10%		0				
<input type="checkbox"/> w	50%	30%	10%	50%	30%	10%	50%	30%	10%	50%	30%	10%	0		
<input type="checkbox"/> fc	20%		20%		20%		20%		20%		0				
RCR	RCR:Room Cavity Ratio						Wall Exitance Coefficients(WEC)								
0.0															
1.0	.455	.259	.082	.446	.254	.081	.429	.246	.079	.413	.238	.077	.399	.231	.075
2.0	.395	.216	.066	.387	.213	.066	.371	.206	.064	.357	.200	.063	.344	.195	.061
3.0	.347	.185	.055	.340	.182	.055	.326	.177	.054	.314	.172	.053	.302	.167	.052
4.0	.309	.160	.047	.302	.158	.047	.290	.154	.046	.278	.150	.045	.268	.146	.044
5.0	.277	.141	.041	.272	.139	.041	.260	.136	.040	.250	.132	.039	.241	.129	.039
6.0	.251	.126	.036	.246	.124	.036	.236	.121	.035	.227	.118	.035	.218	.115	.034
7.0	.230	.114	.032	.225	.112	.032	.216	.109	.031	.208	.107	.031	.200	.104	.031
8.0	.211	.103	.029	.207	.102	.029	.199	.099	.028	.191	.097	.028	.184	.095	.028
9.0	.195	.095	.026	.192	.093	.026	.184	.091	.026	.178	.089	.025	.171	.087	.025
10.0	.182	.087	.024	.178	.086	.024	.172	.084	.024	.165	.082	.023	.160	.080	.023

<input type="checkbox"/> cc	80%		70%		50%		30%		10%		0				
<input type="checkbox"/> w	50%	30%	10%	50%	30%	10%	50%	30%	10%	50%	30%	10%	0		
<input type="checkbox"/> fc	20%		20%		20%		20%		20%		0				
RCR	RCR:Room Cavity Ratio						Ceiling Cavity Exitance Coefficients(CCEC)								
0.0															
1.0	.228	.228	.228	.195	.195	.195	.133	.133	.133	.077	.077	.077	.024	.024	.024
2.0	.224	.170	.124	.192	.146	.107	.132	.101	.075	.076	.059	.044	.024	.019	.014
3.0	.218	.154	.102	.187	.132	.089	.128	.092	.062	.074	.054	.037	.024	.017	.012
4.0	.210	.141	.088	.181	.122	.077	.124	.085	.054	.072	.050	.032	.023	.016	.011
5.0	.202	.131	.079	.174	.114	.069	.120	.079	.049	.069	.047	.029	.022	.015	.010
6.0	.194	.124	.073	.167	.107	.063	.115	.075	.045	.067	.044	.027	.022	.014	.009
7.0	.186	.117	.068	.160	.101	.059	.111	.071	.042	.064	.042	.025	.021	.014	.008
8.0	.179	.111	.065	.154	.096	.056	.107	.068	.040	.062	.040	.024	.020	.013	.008
9.0	.172	.106	.062	.148	.092	.054	.103	.065	.038	.060	.038	.023	.019	.013	.008
10.0	.165	.102	.060	.142	.089	.052	.099	.062	.037	.058	.037	.022	.019	.012	.007

C Range: 0 - 360DEG
 C Interval: 22.5DEG
 Test Speed: HIGH
 Temperature:25.3DEG
 Test Date:2023-08-10

Range: 0 - 180DEG
 Interval: 1.0DEG
 Test System:EVERFINE GO-2000B_V1 SYSTEM V2.00.454
 Humidity:65.0%
 Test Distance:6.020m [K=1.0000]
 Remarks:

UGR(Unified Glare Rating) Table

Test:U:12.000V I:0.0220A P:0.2640W PF:1.0000 Freq:50.00Hz Lamp Flux:3.6399x1 lm										
NAME: MOD-RGB			TYPE: LED Module				WEIGHT:			
SPEC.: 0.72W			DIM.: 66*22*11 (MM)				SERIAL No.: 001			
MFR.: Flexfire LEDs, Inc.			SUR.:				Shielding Angle: 160			
ceiling/cavity	0.7	0.7	0.5	0.5	0.3	0.7	0.7	0.5	0.5	0.3
walls	0.5	0.3	0.5	0.3	0.3	0.5	0.3	0.5	0.3	0.3
working plane	0.2	0.2	0.2	0.2	0.2	0.2	0.2	0.2	0.2	0.2
Room dimensions	Viewed crosswise					Viewed endwise				
x = 2H y = 2H	-8.7	-5.1	-7.9	-4.3	-3.6	-6.9	-3.3	-6.1	-2.6	-1.8
3H	-6.5	-3.2	-5.7	-2.4	-1.6	-4.1	-0.8	-3.3	-0.0	0.8
4H	-5.8	-2.6	-5.0	-1.8	-0.9	-3.1	0.1	-2.2	0.9	1.8
6H	-5.3	-2.3	-4.4	-1.4	-0.5	-2.4	0.6	-1.5	1.4	2.3
8H	-5.1	-2.2	-4.2	-1.3	-0.4	-2.4	0.5	-1.4	1.4	2.4
12H	-5.0	-2.2	-4.0	-1.3	-0.3	-2.3	0.5	-1.4	1.4	2.3
4H 2H	-8.0	-4.8	-7.2	-4.0	-3.2	-6.0	-2.8	-5.1	-2.0	-1.1
3H	-5.8	-3.0	-4.9	-2.1	-1.2	-3.0	-0.1	-2.0	0.7	1.7
4H	-5.0	-2.4	-4.0	-1.4	-0.4	-1.7	0.9	-0.8	1.8	2.8
6H	-4.3	-2.0	-3.3	-1.0	0.0	-0.9	1.4	0.1	2.4	3.5
8H	-4.1	-1.9	-3.1	-0.9	0.2	-0.7	1.5	0.3	2.5	3.5
12H	-3.9	-1.9	-2.8	-0.8	0.3	-0.6	1.4	0.4	2.4	3.6
8H 4H	-4.6	-2.4	-3.6	-1.4	-0.3	-0.9	1.3	0.1	2.3	3.4
6H	-3.8	-1.9	-2.7	-0.8	0.3	0.2	2.1	1.3	3.2	4.3
8H	-3.5	-1.8	-2.4	-0.7	0.5	0.6	2.3	1.7	3.4	4.6
12H	-3.2	-1.7	-2.0	-0.6	0.7	0.9	2.4	2.0	3.5	4.8
12H 4H	-4.5	-2.5	-3.5	-1.5	-0.3	-0.7	1.3	0.4	2.4	3.5
6H	-3.7	-1.9	-2.5	-0.9	0.3	0.6	2.3	1.7	3.3	4.5
8H	-3.3	-1.8	-2.1	-0.7	0.6	1.1	2.6	2.2	3.7	5.0
CIE190: 2010										

CIE190: 2010
Area: 0.001 m2

C Range: 0 - 360DEG
C Interval: 22.5DEG
Test Speed: HIGH
Temperature:25.3DEG
Test Date:2023-08-10

Range: 0 - 180DEG
 Interval: 1.0DEG
Test System:EVERFINE GO-2000B_V1 SYSTEM V2.00.454
Humidity:65.0%
Test Distance:6.020m [K=1.0000]
Remarks:

UTILIZATION FACTORS TABLE

Test:U:12.000V I:0.0220A P:0.2640W PF:1.0000 Freq:50.00Hz Lamp Flux:3.6399x1 lm		
NAME: MOD-RGB	TYPE: LED Module	WEIGHT:
SPEC.: 0.72W	DIM.: 66*22*11 (MM)	SERIAL No.: 001
MFR.: Flexfire LEDs, Inc.	SUR.:	Shielding Angle: 160

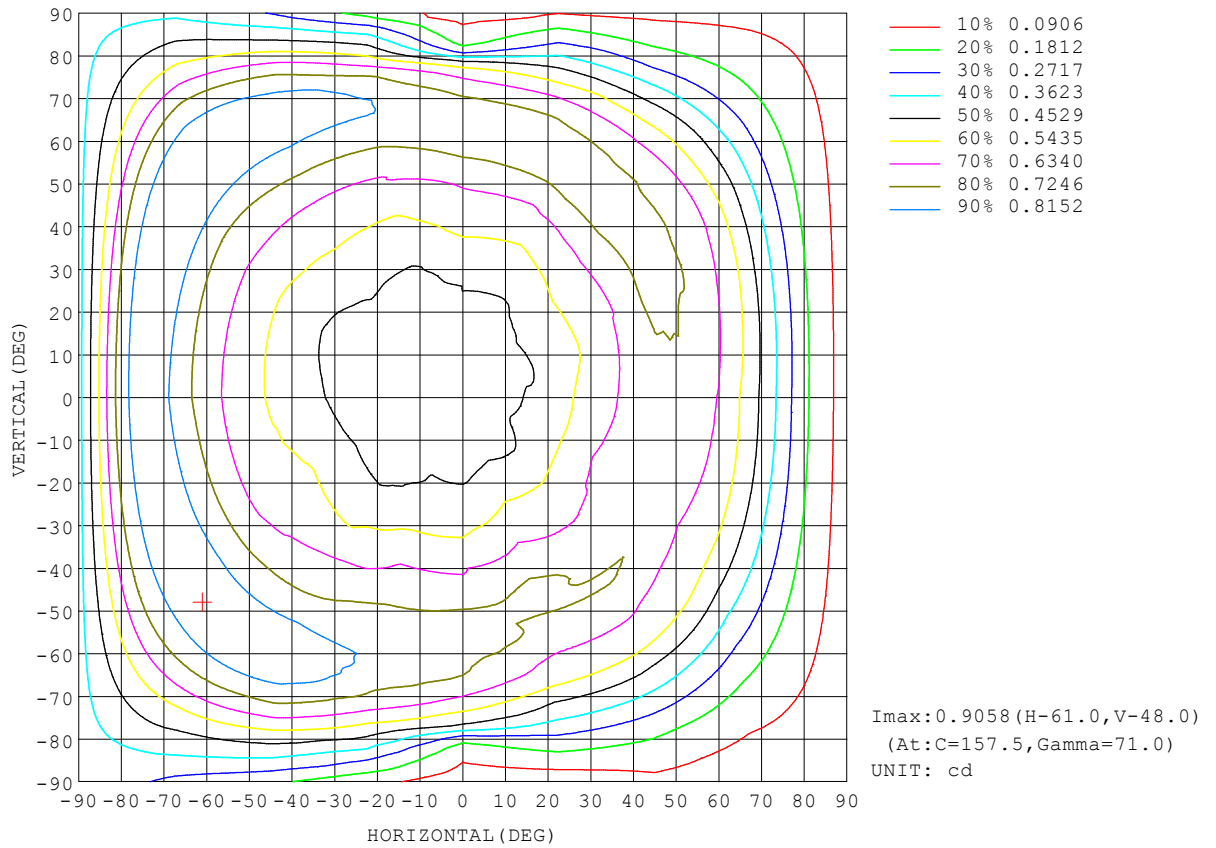
REFLECTANCE										
Ceiling	0.8	0.8	0.8	0.7	0.7	0.7	0.5	0.5	0.5	0
Walls	0.7	0.5	0.3	0.7	0.5	0.3	0.7	0.5	0.3	0
Working plane	0.2	0.2	0.2	0.2	0.2	0.2	0.2	0.2	0.2	0
ROOM INDEX	UTILIZATION FACTORS (PERCENT) $k(RI) \times RCR = 5$									
k = 0.60	44	30	22	43	30	22	41	29	21	14
0.80	53	38	29	52	38	29	49	37	29	20
1.00	61	47	37	59	46	37	56	48	36	27
1.25	68	54	45	66	53	44	63	51	43	33
1.50	74	60	51	72	59	50	68	57	49	39
2.00	82	70	61	80	69	60	75	66	58	47
2.50	88	77	68	85	75	67	80	71	64	53
3.00	92	82	74	89	80	72	84	76	70	58
4.00	98	89	82	95	87	80	89	83	77	65
5.00	101	94	88	98	91	86	92	87	82	70
ROOM INDEX	UF(total)									Direct
According to DIN EN 13032-2 2004			Suspended				SHRNOM = 1.25			

C Range: 0 - 360DEG
 C Interval: 22.5DEG
 Test Speed: HIGH
 Temperature:25.3DEG
 Test Date:2023-08-10

Range: 0 - 180DEG
 Interval: 1.0DEG
 Test System:EVERFINE GO-2000B_V1 SYSTEM V2.00.454
 Humidity:65.0%
 Test Distance:6.020m [K=1.0000]
 Remarks:

ISOCANDELA DIAGRAM

Test:U:12.000V I:0.0220A P:0.2640W PF:1.0000 Freq:50.00Hz Lamp Flux:3.6399x1 lm		
NAME: MOD-RGB	TYPE: LED Module	WEIGHT:
SPEC.: 0.72W	DIM.: 66*22*11 (MM)	SERIAL No.: 001
MFR.: Flexfire LEDs, Inc.	SUR.:	Shielding Angle: 160

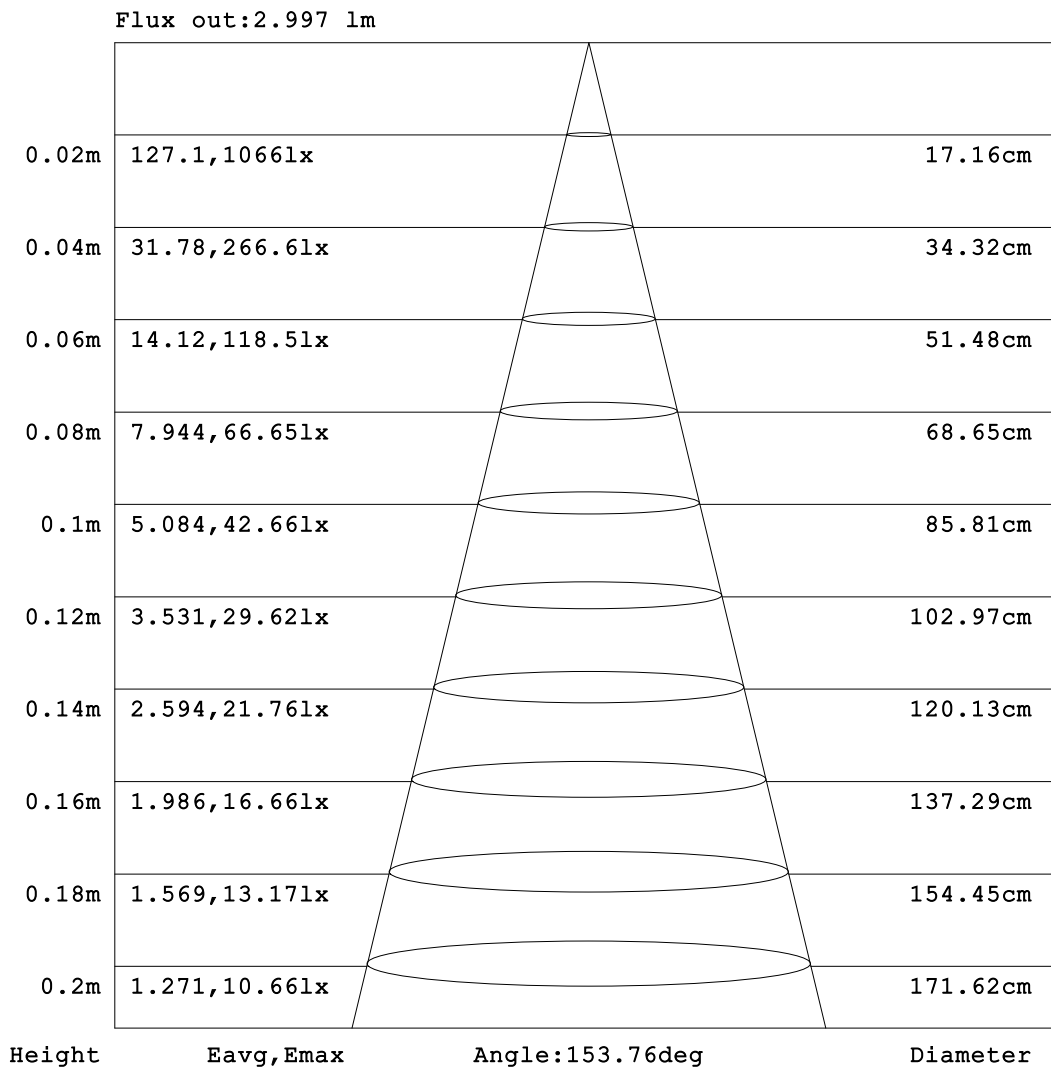


C Range: 0 - 360DEG
 C Interval: 22.5DEG
 Test Speed: HIGH
 Temperature:25.3DEG
 Test Date:2023-08-10

Range: 0 - 180DEG
 Interval: 1.0DEG
 Test System:EVERFINE GO-2000B_V1 SYSTEM V2.00.454
 Humidity:65.0%
 Test Distance:6.020m [K=1.0000]
 Remarks:

AAI Figure

Test:U:12.000V I:0.0220A P:0.2640W PF:1.0000 Freq:50.00Hz Lamp Flux:3.6399x1 lm		
NAME: MOD-RGB	TYPE: LED Module	WEIGHT:
SPEC.: 0.72W	DIM.: 66*22*11 (MM)	SERIAL No.: 001
MFR.: Flexfire LEDs, Inc.	SUR.:	Shielding Angle: 160

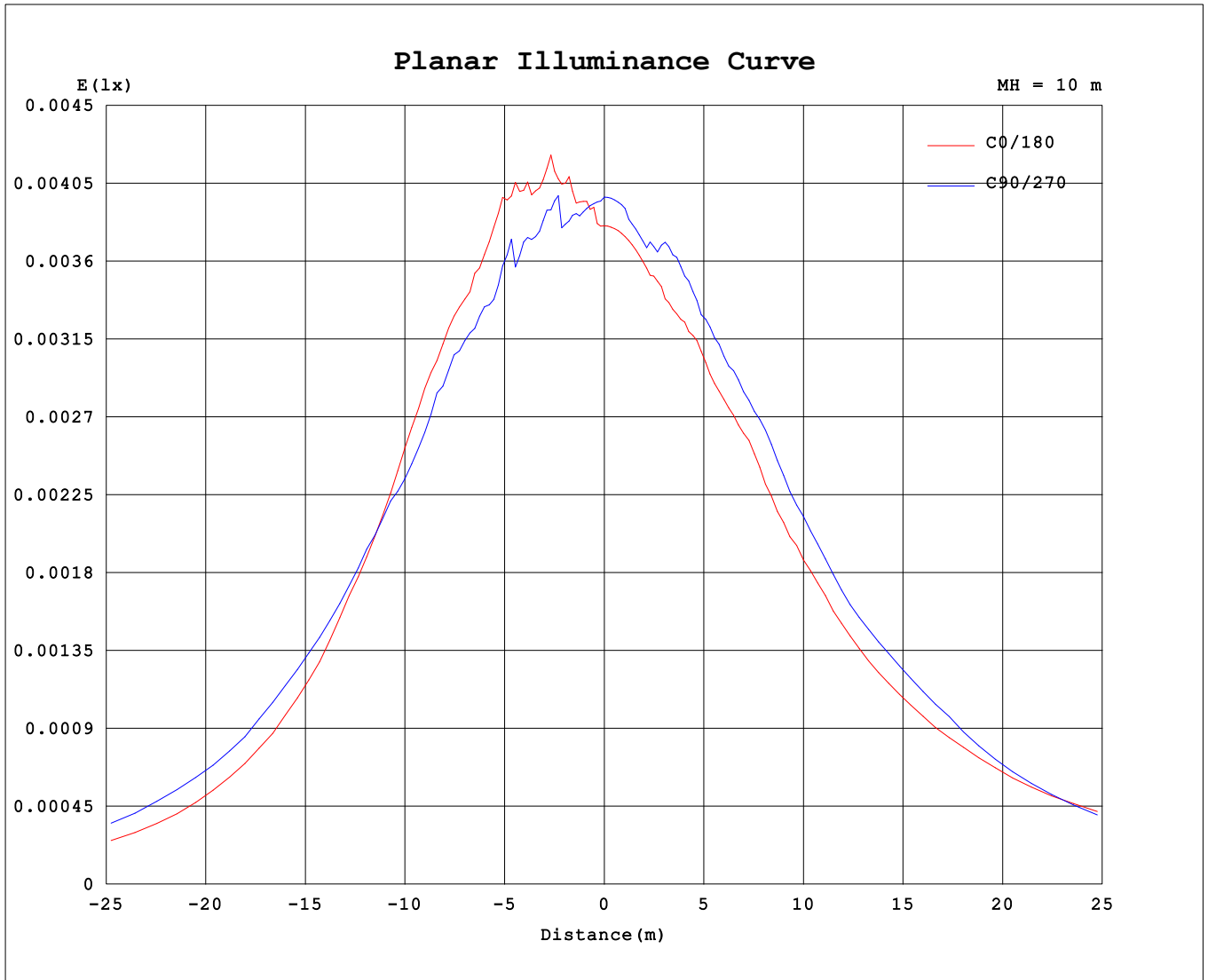


Note:The Curves indicate the illuminated area and the average illumination when the luminaire is at different distance.

C Range: 0 - 360DEG
 C Interval: 22.5DEG
 Test Speed: HIGH
 Temperature:25.3DEG
 Test Date:2023-08-10

Range: 0 - 180DEG
 Interval: 1.0DEG
 Test System:EVERFINE GO-2000B_V1 SYSTEM V2.00.454
 Humidity:65.0%
 Test Distance:6.020m [K=1.0000]
 Remarks:

Planar Illuminance Curve



C Range: 0 - 360DEG
 C Interval: 22.5DEG
 Test Speed: HIGH
 Temperature:25.3DEG
 Test Date:2023-08-10

Range: 0 - 180DEG
 Interval: 1.0DEG
 Test System:EVERFINE GO-2000B_V1 SYSTEM V2.00.454
 Humidity:65.0%
 Test Distance:6.020m [K=1.0000]
 Remarks:

LUMINOUS DISTRIBUTION INTENSITY DATA

Test:U:12.000V I:0.0220A P:0.2640W PF:1.0000 Freq:50.00Hz Lamp Flux:3.6399x1 lm		
NAME: MOD-RGB	TYPE: LED Module	WEIGHT:
SPEC.: 0.72W	DIM.: 66*22*11 (MM)	SERIAL No.: 001
MFR.: Flexfire LEDs, Inc.	SUR.:	Shielding Angle: 160

Table--1

UNIT: cd

C (DEG) \ □ (DEG)	0	22.5	45	67.5	90	112.5	135	157.5	180	202.5	225	247.5	270	292.5	315	337.5			
0	0.39	0.39	0.39	0.39	0.39	0.39	0.39	0.39	0.39	0.39	0.39	0.39	0.39	0.39	0.39	0.39			
5	0.41	0.41	0.41	0.40	0.39	0.39	0.38	0.39	0.39	0.39	0.39	0.39	0.39	0.39	0.39	0.40			
10	0.44	0.43	0.44	0.41	0.39	0.41	0.38	0.39	0.39	0.38	0.39	0.39	0.39	0.39	0.40	0.41			
15	0.48	0.46	0.45	0.44	0.43	0.43	0.39	0.42	0.40	0.37	0.40	0.39	0.40	0.40	0.44	0.44			
20	0.49	0.50	0.49	0.48	0.44	0.45	0.40	0.42	0.41	0.37	0.41	0.39	0.43	0.44	0.45	0.51			
25	0.55	0.53	0.55	0.52	0.49	0.48	0.43	0.45	0.43	0.38	0.43	0.43	0.45	0.45	0.49	0.51			
30	0.59	0.59	0.57	0.56	0.51	0.51	0.46	0.49	0.45	0.40	0.46	0.43	0.47	0.50	0.53	0.56			
35	0.63	0.64	0.62	0.61	0.56	0.56	0.50	0.53	0.49	0.43	0.48	0.46	0.51	0.52	0.57	0.61			
40	0.69	0.69	0.69	0.65	0.62	0.62	0.54	0.56	0.51	0.46	0.52	0.49	0.56	0.56	0.61	0.65			
45	0.73	0.70	0.72	0.72	0.65	0.66	0.59	0.59	0.54	0.50	0.56	0.54	0.59	0.61	0.66	0.72			
50	0.73	0.70	0.73	0.73	0.72	0.71	0.65	0.62	0.58	0.55	0.60	0.59	0.63	0.68	0.74	0.75			
55	0.70	0.65	0.72	0.70	0.74	0.77	0.70	0.67	0.63	0.60	0.65	0.63	0.70	0.74	0.75	0.75			
60	0.65	0.59	0.66	0.66	0.75	0.81	0.78	0.75	0.70	0.66	0.73	0.70	0.76	0.76	0.72	0.71			
65	0.56	0.53	0.60	0.60	0.71	0.80	0.85	0.85	0.76	0.73	0.80	0.76	0.76	0.76	0.66	0.65			
70	0.45	0.43	0.50	0.52	0.62	0.73	0.87	0.92	0.86	0.85	0.88	0.80	0.72	0.68	0.57	0.54			
75	0.33	0.31	0.37	0.41	0.49	0.62	0.77	0.86	0.89	0.89	0.89	0.74	0.62	0.54	0.45	0.41			
80	0.21	0.19	0.25	0.27	0.22	0.46	0.59	0.70	0.79	0.77	0.73	0.56	0.32	0.39	0.29	0.27			
85	0.12	0.10	0.14	0.14	0.09	0.28	0.40	0.47	0.57	0.55	0.49	0.37	0.11	0.23	0.16	0.15			
90	0.07	0.04	0.07	0.04	0.04	0.12	0.20	0.26	0.34	0.34	0.27	0.15	0.05	0.09	0.05	0.07			
95	0.05	0.03	0.04	0.02	0.02	0.03	0.08	0.11	0.15	0.15	0.09	0.07	0.02	0.02	0.01	0.04			
100	0.04	0.02	0.03	0.02	0.02	0.02	0.05	0.04	0.07	0.07	0.04	0.05	0.02	0.02	0.01	0.03			
105	0.03	0.02	0.03	0.02	0.02	0.02	0.03	0.04	0.04	0.06	0.03	0.04	0.02	0.02	0.01	0.02			
110	0.03	0.02	0.02	0.02	0.02	0.02	0.03	0.03	0.04	0.05	0.02	0.03	0.02	0.02	0.01	0.02			
115	0.03	0.02	0.02	0.02	0.02	0.02	0.03	0.03	0.03	0.05	0.02	0.03	0.02	0.02	0.01	0.02			
120	0.02	0.02	0.02	0.02	0.02	0.02	0.02	0.02	0.03	0.04	0.02	0.03	0.02	0.02	0.01	0.02			
125	0.02	0.02	0.02	0.02	0.02	0.02	0.02	0.01	0.02	0.03	0.02	0.02	0.02	0.02	0.01	0.02			
130	0.02	0.02	0.02	0.02	0.02	0.02	0.02	0.01	0.02	0.03	0.02	0.02	0.02	0.02	0.01	0.02			
135	0.02	0.02	0.02	0.02	0.02	0.02	0.02	0.01	0.02	0.03	0.02	0.02	0.02	0.02	0.01	0.02			
140	0.02	0.02	0.02	0.02	0.02	0.02	0.02	0.01	0.02	0.03	0.02	0.02	0.02	0.02	0.01	0.02			
145	0.02	0.02	0.02	0.02	0.02	0.02	0.01	0.01	0.02	0.02	0.02	0.02	0.02	0.02	0.01	0.02			
150	0.02	0.02	0.02	0.02	0.02	0.02	0.01	0.01	0.02	0.02	0.02	0.02	0.02	0.02	0.01	0.02			
155	0.02	0.02	0.02	0.02	0.02	0.02	0.02	0.01	0.02	0.02	0.02	0.02	0.02	0.02	0.01	0.02			
160	0.02	0.02	0.02	0.02	0.02	0.02	0.01	0.01	0.02	0.02	0.02	0.02	0.02	0.02	0.01	0.02			
165	0.02	0.02	0.02	0.02	0.02	0.02	0.01	0.01	0.02	0.02	0.02	0.02	0.02	0.02	0.01	0.02			
170	0.02	0.02	0.02	0.02	0.02	0.02	0.01	0.01	0.02	0.02	0.02	0.02	0.02	0.02	0.01	0.02			
175	0.02	0.02	0.02	0.02	0.02	0.02	0.01	0.01	0.02	0.02	0.02	0.02	0.02	0.02	0.01	0.02			
180	0.02	0.02	0.02	0.02	0.02	0.02	0.01	0.01	0.02	0.02	0.02	0.02	0.02	0.02	0.01	0.02			

C Range: 0 - 360DEG
 C Interval: 22.5DEG
 Test Speed: HIGH
 Temperature:25.3DEG
 Test Date:2023-08-10

□ Range: 0 - 180DEG
 □ Interval: 1.0DEG
 Test System:EVERFINE GO-2000B_V1 SYSTEM V2.00.454
 Humidity:65.0%
 Test Distance:6.020m [K=1.0000]
 Remarks: