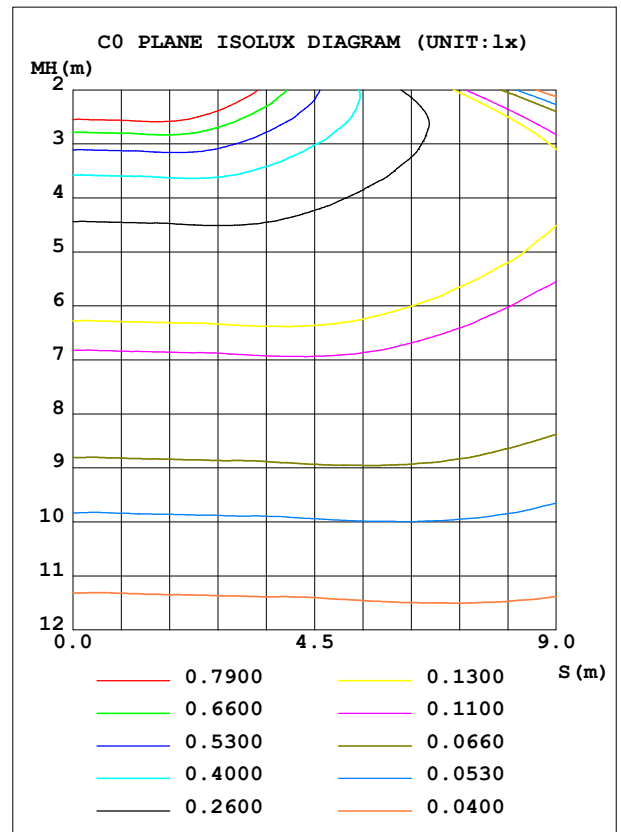
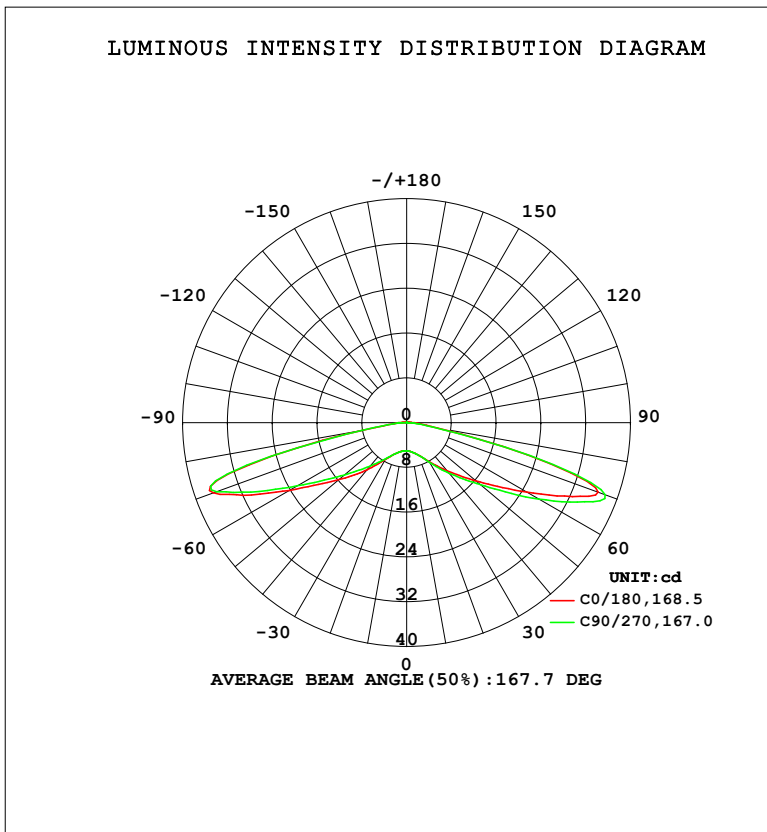


LUMINAIRE PHOTOMETRIC TEST REPORT

Test:U:23.999V I:0.0309A P:0.7416W PF:1.0000 Freq:50.00Hz Lamp Flux:100.219x1 lm		
NAME: MOD-65K	TYPE: LED Module	WEIGHT:
SPEC.: 0.72W	DIM.: 60*18*9 (MM)	SERIAL No.: 001
MFR.: Flexfire LEDs, Inc.	SUR.:	Shielding Angle: 170

DATA OF LAMP		PHOTOMETRIC DATA			
MODEL	MOD-65K	Imax (cd)	39.68	S/MH	4.10
NOMINAL POWER (W)	0.72	LOR (%)	100.0		
RATED VOLTAGE (V)	24	TOTAL FLUX (lm)	100.22	<input type="checkbox"/> UP, DN (C0-180)	0.5, 50.2
NOMINAL FLUX (lm)	100.219	CIE CLASS	DIRECT	<input type="checkbox"/> UP, DN (C180-360)	0.4, 48.9
LAMPS INSIDE	1	<input type="checkbox"/> up (%)	0.9	CIBSE SHR NOM	2.00
TEST VOLTAGE (V)	24	<input type="checkbox"/> down (%)	99.1	CIBSE SHR MAX	2.00



C Range: 0 - 360DEG
 C Interval: 22.5DEG
 Test Speed: HIGH
 Temperature: 25.3DEG
 Test Date: 2023-08-31

Range: 0 - 180DEG
 Interval: 1.0DEG
 Test System: EVERFINE GO-2000B_V1 SYSTEM V2.00.454
 Humidity: 65.0%
 Test Distance: 6.020m [K=1.0000]
 Remarks:

ZONAL FLUX DIAGRAM

ZONAL FLUX DIAGRAM:

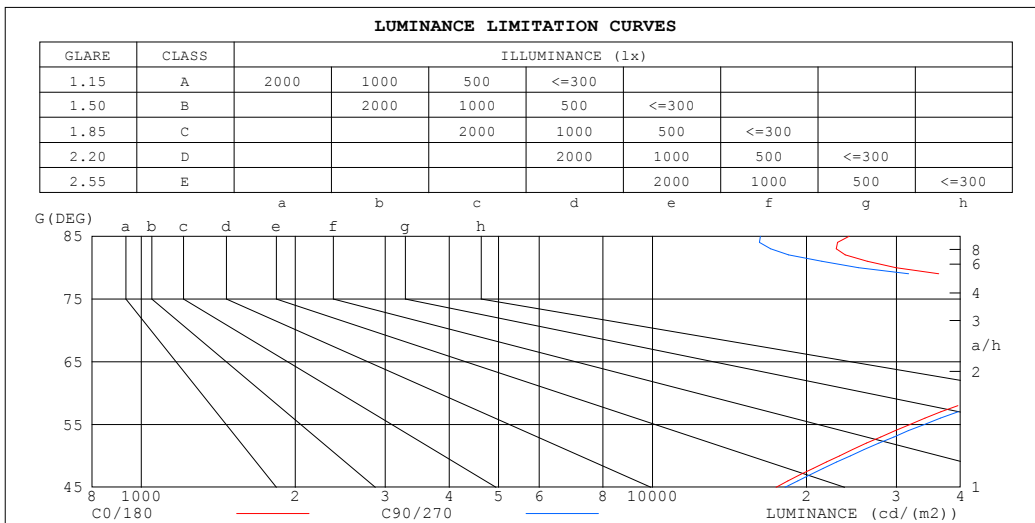
°	C0	C45	C90	C135	C180	C225	C270	C315	°	□ zone	□ total	%lum,lamp
10	5.331	5.359	5.348	5.269	5.219	5.192	5.230	5.295	0- 10	0.4930	0.4930	0.49,0.49
20	6.183	6.250	6.180	6.026	5.923	5.875	5.928	6.079	10- 20	1.601	2.094	2.09,2.09
30	8.052	8.272	8.184	7.913	7.605	7.533	7.419	7.724	20- 30	3.186	5.280	5.27,5.27
40	11.25	11.77	11.80	11.57	11.01	10.62	10.13	10.56	30- 40	5.911	11.19	11.2,11.2
50	16.23	16.94	17.32	17.04	15.89	15.42	14.59	15.06	40- 50	10.41	21.60	21.6,21.6
60	24.82	26.01	27.36	27.03	24.23	23.54	22.60	23.28	50- 60	18.02	39.62	39.5,39.5
70	36.37	36.57	37.74	39.68	36.74	36.32	36.11	37.03	60- 70	31.04	70.66	70.5,70.5
80	5.645	5.264	4.850	5.572	7.818	9.137	8.093	7.142	70- 80	25.75	96.42	96.2,96.2
90	1.317	1.106	0.5159	1.130	1.294	1.277	0.7788	0.0824	80- 90	2.883	99.30	99.1,99.1
100	0.4363	0.2110	0.0480	0.3328	0.4782	0.3156	0.0418	0.1886	90-100	0.5960	99.90	99.7,99.7
110	0.1214	0.0666	0.0480	0.0878	0.1150	0.0478	0.0418	0.0459	100-110	0.1539	100.0	99.8,99.8
120	0.0575	0.0520	0.0480	0.0543	0.0370	0.0291	0.0396	0.0439	110-120	0.0557	100.1	99.9,99.9
130	0.0473	0.0478	0.0480	0.0501	0.0267	0.0250	0.0313	0.0460	120-130	0.0374	100.1	99.9,99.9
140	0.0432	0.0437	0.0438	0.0439	0.0247	0.0250	0.0271	0.0355	130-140	0.0299	100.2	100,100
150	0.0370	0.0374	0.0376	0.0397	0.0247	0.0250	0.0271	0.0334	140-150	0.0212	100.2	100,100
160	0.0329	0.0333	0.0334	0.0418	0.0247	0.0250	0.0271	0.0334	150-160	0.0146	100.2	100,100
170	0.0288	0.0312	0.0313	0.0356	0.0247	0.0250	0.0271	0.0334	160-170	0.0086	100.2	100,100
180	0.0247	0.0270	0.0271	0.0292	0.0247	0.0250	0.0271	0.0334	170-180	0.0027	100.2	100,100
DEG	LUMINOUS INTENSITY:cd									UNIT:lm		

C Range: 0 - 360DEG
 C Interval: 22.5DEG
 Test Speed: HIGH
 Temperature:25.3DEG
 Test Date:2023-08-31

□ Range: 0 - 180DEG
 □ Interval: 1.0DEG
 Test System:EVERFINE GO-2000B_V1 SYSTEM V2.00.454
 Humidity:65.0%
 Test Distance:6.020m [K=1.0000]
 Remarks:

LUMINANCE LIMITATION CURVES

Test:U:23.999V I:0.0309A P:0.7416W PF:1.0000 Freq:50.00Hz Lamp Flux:100.219x1 lm		
NAME: MOD-65K	TYPE: LED Module	WEIGHT:
SPEC.: 0.72W	DIM.: 60*18*9 (MM)	SERIAL No.: 001
MFR.: Flexfire LEDs, Inc.	SUR.:	Shielding Angle: 170



LUMINANCE cd/(m2)		
G (DEG)	C0/180	C90/270
85	24240	16258
80	29893	25285
75	79119	79876
70	97779	99896
65	67641	72082
60	45651	49532
55	31860	33998
50	23213	24387
45	17435	18172

C Range: 0 - 360DEG
 C Interval: 22.5DEG
 Test Speed: HIGH
 Temperature:25.3DEG
 Test Date:2023-08-31

Range: 0 - 180DEG
 Interval: 1.0DEG
 Test System:EVERFINE GO-2000B_V1 SYSTEM V2.00.454
 Humidity:65.0%
 Test Distance:6.020m [K=1.0000]
 Remarks:

WEC AND CCEC

Test:U:23.999V I:0.0309A P:0.7416W PF:1.0000 Freq:50.00Hz Lamp Flux:100.219x1 lm								
NAME: MOD-65K			TYPE: LED Module			WEIGHT:		
SPEC.: 0.72W			DIM.: 60*18*9 (MM)			SERIAL No.: 001		
MFR.: Flexfire LEDs, Inc.			SUR.:			Shielding Angle: 170		

<input type="checkbox"/> cc	80%		70%		50%		30%		10%		0				
<input type="checkbox"/> w	50%	30%	10%	50%	30%	10%	50%	30%	10%	50%	30%	10%	0		
<input type="checkbox"/> fc	20%		20%		20%		20%		20%		0				
RCR	RCR:Room Cavity Ratio						Wall Exitance Coefficients(WEC)								
0.0															
1.0	.470	.267	.085	.462	.264	.084	.448	.257	.082	.434	.250	.080	.422	.244	.079
2.0	.430	.235	.072	.422	.233	.072	.409	.227	.071	.397	.222	.070	.385	.218	.069
3.0	.381	.203	.061	.375	.201	.060	.363	.197	.060	.352	.193	.059	.341	.189	.058
4.0	.338	.176	.052	.332	.174	.051	.321	.170	.051	.311	.167	.050	.302	.164	.050
5.0	.302	.154	.045	.297	.152	.044	.287	.149	.044	.278	.147	.044	.269	.144	.043
6.0	.272	.136	.039	.267	.135	.039	.258	.132	.039	.250	.130	.038	.243	.128	.038
7.0	.246	.122	.035	.242	.121	.034	.235	.119	.034	.227	.117	.034	.221	.115	.034
8.0	.225	.110	.031	.222	.109	.031	.215	.107	.031	.208	.105	.030	.202	.104	.030
9.0	.207	.100	.028	.204	.099	.028	.198	.098	.028	.192	.096	.028	.187	.095	.027
10.0	.192	.092	.026	.189	.091	.025	.183	.090	.025	.178	.088	.025	.173	.087	.025

<input type="checkbox"/> cc	80%		70%		50%		30%		10%		0				
<input type="checkbox"/> w	50%	30%	10%	50%	30%	10%	50%	30%	10%	50%	30%	10%	0		
<input type="checkbox"/> fc	20%		20%		20%		20%		20%		0				
RCR	RCR:Room Cavity Ratio						Ceiling Cavity Exitance Coefficients(CCEC)								
0.0															
1.0	.197	.197	.197	.169	.169	.169	.115	.115	.115	.066	.066	.066	.021	.021	.021
2.0	.198	.162	.129	.170	.139	.111	.116	.096	.077	.067	.055	.045	.021	.018	.014
3.0	.198	.138	.088	.169	.119	.076	.116	.082	.053	.067	.048	.031	.021	.016	.010
4.0	.193	.122	.066	.166	.105	.057	.114	.073	.040	.066	.043	.024	.021	.014	.008
5.0	.186	.110	.052	.160	.095	.045	.110	.066	.032	.063	.039	.019	.020	.013	.006
6.0	.178	.101	.044	.153	.087	.038	.105	.061	.027	.061	.036	.016	.020	.012	.005
7.0	.169	.093	.038	.145	.080	.033	.100	.056	.023	.058	.033	.014	.019	.011	.005
8.0	.161	.086	.034	.138	.075	.030	.095	.052	.021	.055	.031	.012	.018	.010	.004
9.0	.152	.080	.031	.131	.070	.027	.091	.049	.019	.053	.029	.011	.017	.009	.004
10.0	.145	.075	.029	.125	.065	.025	.086	.046	.018	.050	.027	.011	.016	.009	.003
10.0	.138	.071	.027	.119	.062	.023	.082	.043	.017	.048	.026	.010	.016	.008	.003

C Range: 0 - 360DEG
 C Interval: 22.5DEG
 Test Speed: HIGH
 Temperature:25.3DEG
 Test Date:2023-08-31

Range: 0 - 180DEG
 Interval: 1.0DEG
 Test System:EVERFINE GO-2000B_V1 SYSTEM V2.00.454
 Humidity:65.0%
 Test Distance:6.020m [K=1.0000]
 Remarks:

UGR(Unified Glare Rating) Table

Test:U:23.999V I:0.0309A P:0.7416W PF:1.0000 Freq:50.00Hz Lamp Flux:100.219x1 lm										
NAME: MOD-65K			TYPE: LED Module				WEIGHT:			
SPEC.: 0.72W			DIM.: 60*18*9 (MM)				SERIAL No.: 001			
MFR.: Flexfire LEDs, Inc.			SUR.:				Shielding Angle: 170			
ceiling/cavity	0.7	0.7	0.5	0.5	0.3	0.7	0.7	0.5	0.5	0.3
walls	0.5	0.3	0.5	0.3	0.3	0.5	0.3	0.5	0.3	0.3
working plane	0.2	0.2	0.2	0.2	0.2	0.2	0.2	0.2	0.2	0.2
Room dimensions	Viewed crosswise					Viewed endwise				
x = 2H y = 2H	16.1	20.2	16.8	20.8	21.4	16.5	20.6	17.2	21.2	21.8
3H	21.8	25.6	22.5	26.2	26.9	22.2	26.0	22.9	26.6	27.3
4H	23.0	26.7	23.8	27.3	28.0	23.4	27.0	24.1	27.7	28.4
6H	23.1	26.6	23.9	27.3	28.0	23.4	26.9	24.2	27.6	28.3
8H	23.1	26.4	23.9	27.2	27.9	23.4	26.7	24.2	27.4	28.2
12H	23.1	26.3	23.9	27.0	27.8	23.3	26.5	24.1	27.3	28.1
4H 2H	17.8	21.5	18.6	22.1	22.8	18.1	21.8	18.9	22.4	23.1
3H	23.0	26.2	23.8	27.0	27.7	23.4	26.6	24.2	27.4	28.1
4H	24.1	27.1	24.9	27.9	28.7	24.5	27.5	25.4	28.3	29.1
6H	24.3	26.9	25.1	27.8	28.6	24.7	27.3	25.5	28.2	29.0
8H	24.3	26.8	25.2	27.6	28.5	24.6	27.1	25.5	28.0	28.9
12H	24.3	26.6	25.2	27.5	28.4	24.6	26.9	25.6	27.8	28.7
8H 4H	24.3	26.8	25.2	27.7	28.6	24.9	27.4	25.8	28.2	29.1
6H	24.6	26.7	25.5	27.6	28.5	25.0	27.2	26.0	28.1	29.0
8H	24.6	26.5	25.6	27.4	28.4	25.0	26.9	26.0	27.9	28.9
12H	24.7	26.3	25.7	27.3	28.3	25.1	26.7	26.1	27.7	28.8
12H 4H	24.3	26.6	25.3	27.5	28.4	24.9	27.2	25.8	28.1	29.0
6H	24.6	26.5	25.6	27.4	28.4	25.1	26.9	26.1	27.9	28.9
8H	24.6	26.3	25.6	27.2	28.3	25.1	26.7	26.1	27.7	28.8
CIE190: 2010										

CIE190: 2010
Area: 0.0011 m2

C Range: 0 - 360DEG	<input type="checkbox"/> Range: 0 - 180DEG
C Interval: 22.5DEG	<input type="checkbox"/> Interval: 1.0DEG
Test Speed: HIGH	Test System:EVERFINE GO-2000B_V1 SYSTEM V2.00.454
Temperature:25.3DEG	Humidity:65.0%
Test Date:2023-08-31	Test Distance:6.020m [K=1.0000]
	Remarks:

UTILIZATION FACTORS TABLE

Test:U:23.999V I:0.0309A P:0.7416W PF:1.0000 Freq:50.00Hz Lamp Flux:100.219x1 lm		
NAME: MOD-65K	TYPE: LED Module	WEIGHT:
SPEC.: 0.72W	DIM.: 60*18*9 (MM)	SERIAL No.: 001
MFR.: Flexfire LEDs, Inc.	SUR.:	Shielding Angle: 170

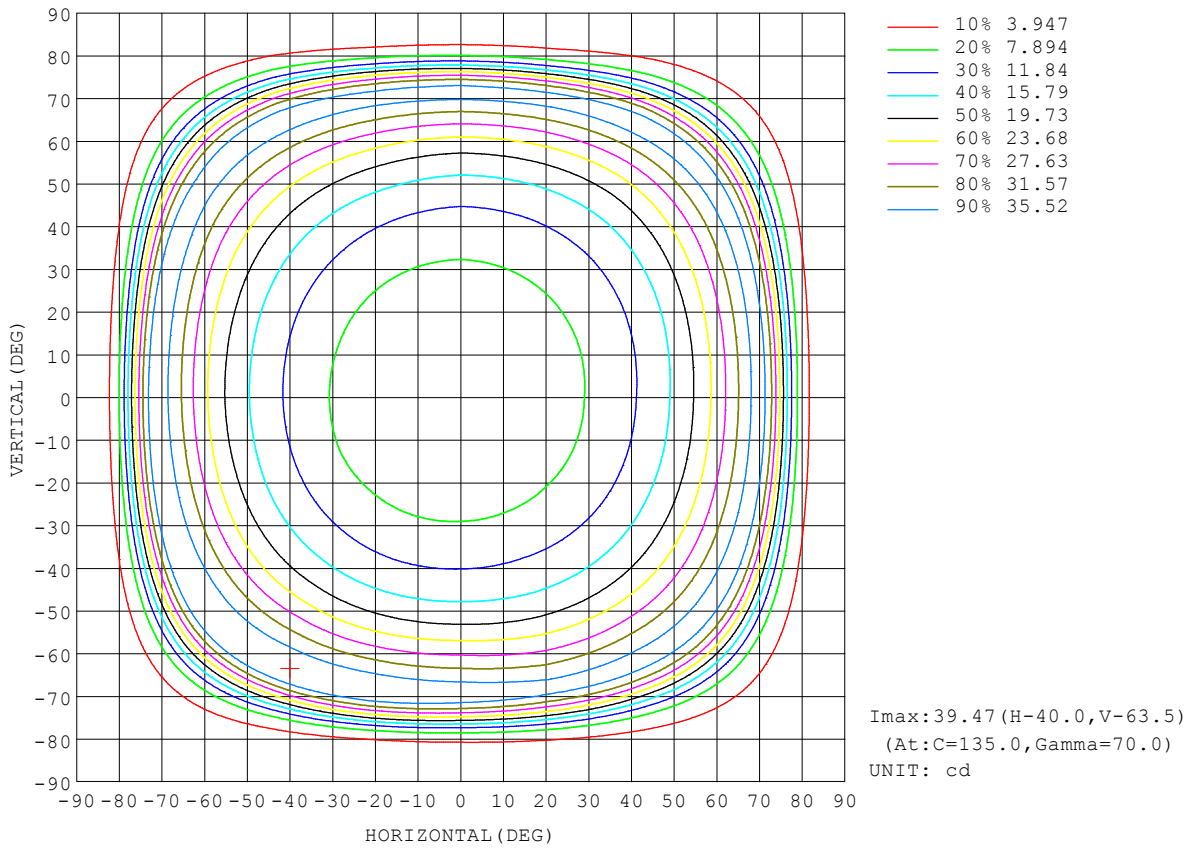
REFLECTANCE										
Ceiling	0.8	0.8	0.8	0.7	0.7	0.7	0.5	0.5	0.5	0
Walls	0.7	0.5	0.3	0.7	0.5	0.3	0.7	0.5	0.3	0
Working plane	0.2	0.2	0.2	0.2	0.2	0.2	0.2	0.2	0.2	0
ROOM INDEX	UTILIZATION FACTORS (PERCENT) $k(RI) \times RCR = 5$									
k = 0.60	41	26	17	40	26	17	38	25	17	9
0.80	49	33	23	47	33	23	45	32	23	14
1.00	56	40	30	55	40	30	52	42	29	19
1.25	64	48	38	62	47	37	59	46	36	26
1.50	70	55	44	68	54	44	64	52	43	32
2.00	80	66	56	77	65	55	73	62	54	43
2.50	86	74	65	84	73	64	79	70	62	51
3.00	91	81	72	89	79	71	84	76	69	58
4.00	98	90	82	95	88	81	90	84	78	67
5.00	103	95	89	100	93	88	95	89	84	74
ROOM INDEX	UF(total)									Direct
According to DIN EN 13032-2 2004			Suspended				SHRNOM = 1.25			

C Range: 0 - 360DEG
 C Interval: 22.5DEG
 Test Speed: HIGH
 Temperature:25.3DEG
 Test Date:2023-08-31

Range: 0 - 180DEG
 Interval: 1.0DEG
 Test System:EVERFINE GO-2000B_V1 SYSTEM V2.00.454
 Humidity:65.0%
 Test Distance:6.020m [K=1.0000]
 Remarks:

ISOCANDELA DIAGRAM

Test:U:23.999V I:0.0309A P:0.7416W PF:1.0000 Freq:50.00Hz Lamp Flux:100.219x1 lm		
NAME: MOD-65K	TYPE: LED Module	WEIGHT:
SPEC.: 0.72W	DIM.: 60*18*9 (MM)	SERIAL No.: 001
MFR.: Flexfire LEDs, Inc.	SUR.:	Shielding Angle: 170

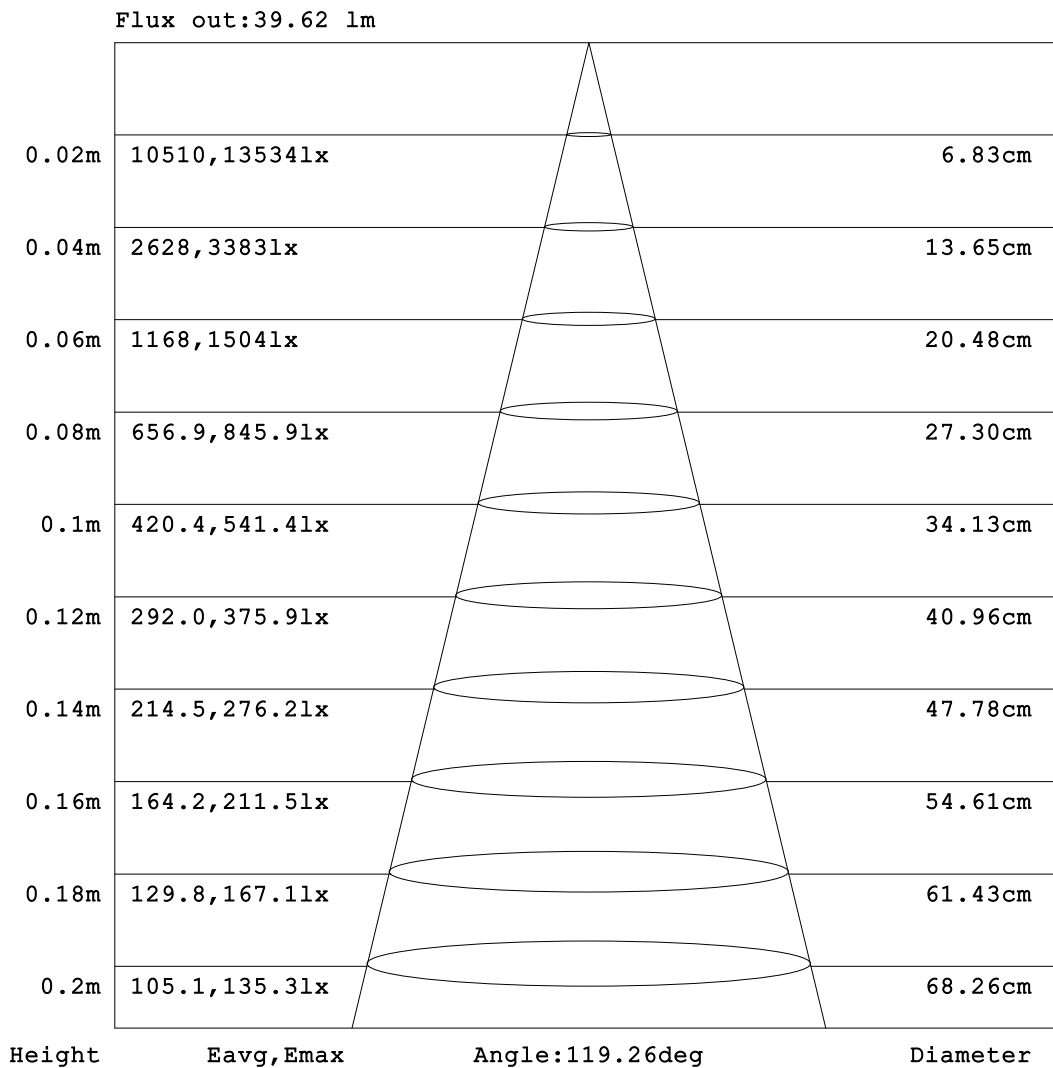


C Range: 0 - 360DEG
 C Interval: 22.5DEG
 Test Speed: HIGH
 Temperature: 25.3DEG
 Test Date: 2023-08-31

Range: 0 - 180DEG
 Interval: 1.0DEG
 Test System: EVERFINE GO-2000B_V1 SYSTEM V2.00.454
 Humidity: 65.0%
 Test Distance: 6.020m [K=1.0000]
 Remarks:

AAI Figure

Test:U:23.999V I:0.0309A P:0.7416W PF:1.0000 Freq:50.00Hz Lamp Flux:100.219x1 lm		
NAME: MOD-65K	TYPE: LED Module	WEIGHT:
SPEC.: 0.72W	DIM.: 60*18*9 (MM)	SERIAL No.: 001
MFR.: Flexfire LEDs, Inc.	SUR.:	Shielding Angle: 170

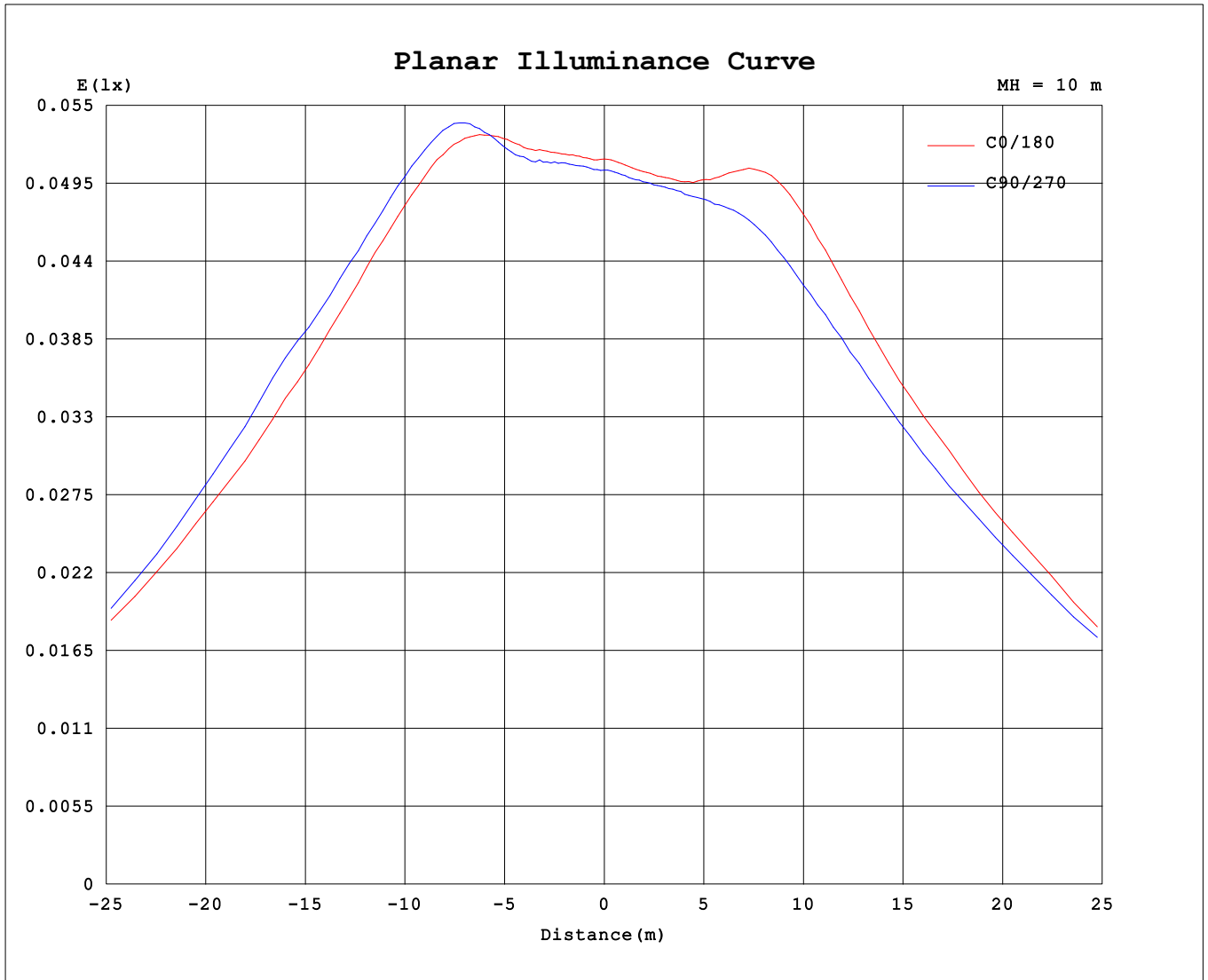


Note:The Curves indicate the illuminated area and the average illumination when the luminaire is at different distance.

C Range: 0 - 360DEG
 C Interval: 22.5DEG
 Test Speed: HIGH
 Temperature:25.3DEG
 Test Date:2023-08-31

Range: 0 - 180DEG
 Interval: 1.0DEG
 Test System:EVERFINE GO-2000B_V1 SYSTEM V2.00.454
 Humidity:65.0%
 Test Distance:6.020m [K=1.0000]
 Remarks:

Planar Illuminance Curve



C Range: 0 - 360DEG
 C Interval: 22.5DEG
 Test Speed: HIGH
 Temperature: 25.3DEG
 Test Date: 2023-08-31

Range: 0 - 180DEG
 Interval: 1.0DEG
 Test System: EVERFINE GO-2000B_V1 SYSTEM V2.00.454
 Humidity: 65.0%
 Test Distance: 6.020m [K=1.0000]
 Remarks:

LUMINOUS DISTRIBUTION INTENSITY DATA

Test:U:23.999V I:0.0309A P:0.7416W PF:1.0000 Freq:50.00Hz Lamp Flux:100.219x1 lm		
NAME: MOD-65K	TYPE: LED Module	WEIGHT:
SPEC.: 0.72W	DIM.: 60*18*9 (MM)	SERIAL No.: 001
MFR.: Flexfire LEDs, Inc.	SUR.:	Shielding Angle: 170

Table--1

UNIT: cd

C (DEG) □ (DEG)	0	22.5	45	67.5	90	112.5	135	157.5	180	202.5	225	247.5	270	292.5	315	337.5			
0	5.06	5.06	5.06	5.06	5.06	5.06	5.06	5.06	5.06	5.06	5.06	5.06	5.06	5.06	5.06	5.06			
5	5.13	5.15	5.16	5.16	5.15	5.14	5.11	5.10	5.09	5.06	5.08	5.06	5.09	5.07	5.12	5.11			
10	5.33	5.36	5.36	5.37	5.35	5.31	5.27	5.24	5.22	5.18	5.19	5.18	5.23	5.23	5.29	5.31			
15	5.67	5.69	5.71	5.71	5.68	5.62	5.56	5.52	5.49	5.45	5.45	5.44	5.50	5.52	5.61	5.64			
20	6.18	6.21	6.25	6.22	6.18	6.09	6.03	5.96	5.92	5.89	5.87	5.86	5.93	5.98	6.08	6.14			
25	6.97	7.01	7.07	7.03	6.98	6.85	6.78	6.65	6.59	6.58	6.55	6.49	6.54	6.62	6.76	6.88			
30	8.05	8.15	8.27	8.22	8.18	8.02	7.91	7.71	7.61	7.60	7.53	7.42	7.42	7.52	7.72	7.91			
35	9.48	9.65	9.85	9.84	9.82	9.62	9.55	9.29	9.08	9.07	8.88	8.72	8.62	8.77	9.00	9.23			
40	11.3	11.5	11.8	11.9	11.8	11.6	11.6	11.3	11.0	10.9	10.6	10.4	10.1	10.3	10.6	10.9			
45	13.4	13.8	14.0	14.2	14.2	14.0	14.0	13.7	13.2	13.0	12.8	12.3	12.0	12.2	12.5	12.9			
50	16.2	16.7	16.9	17.0	17.3	17.1	17.0	16.5	15.9	15.7	15.4	15.0	14.6	14.7	15.1	15.6			
55	19.9	20.3	20.8	21.0	21.5	21.4	21.3	20.4	19.3	19.1	18.9	18.6	17.9	18.1	18.4	19.2			
60	24.8	25.4	26.0	26.2	27.4	27.2	27.0	25.8	24.2	23.7	23.5	23.2	22.6	22.9	23.3	24.1			
65	31.1	31.8	32.7	32.3	33.6	34.0	33.9	32.6	30.6	29.7	29.6	29.5	29.1	29.3	29.8	30.5			
70	36.4	36.5	36.6	36.4	37.7	39.4	39.7	39.0	36.7	36.0	36.3	36.0	36.1	36.3	37.0	36.9			
75	22.3	22.1	21.2	22.1	22.8	25.2	26.5	28.8	29.2	29.3	30.6	29.7	29.6	28.0	27.0	24.7			
80	5.65	5.66	5.26	5.11	4.85	5.00	5.57	6.80	7.82	8.39	9.14	8.28	8.09	7.16	7.14	6.28			
85	2.30	2.21	2.02	1.87	1.57	1.79	1.93	2.11	2.25	2.35	2.52	2.36	2.31	2.39	2.52	2.45			
90	1.32	1.27	1.11	0.95	0.52	0.95	1.13	1.26	1.29	1.31	1.28	1.11	0.78	1.12	0.08	0.92			
95	0.77	0.71	0.59	0.22	0.05	0.40	0.64	0.74	0.78	0.77	0.66	0.47	0.04	0.26	0.28	0.75			
100	0.44	0.39	0.21	0.04	0.05	0.06	0.33	0.44	0.48	0.44	0.32	0.08	0.04	0.07	0.19	0.41			
105	0.24	0.20	0.09	0.04	0.05	0.04	0.16	0.24	0.26	0.24	0.13	0.05	0.04	0.05	0.11	0.23			
110	0.12	0.10	0.07	0.04	0.05	0.04	0.09	0.12	0.11	0.13	0.05	0.05	0.04	0.05	0.05	0.11			
115	0.08	0.05	0.06	0.04	0.05	0.04	0.06	0.07	0.07	0.08	0.03	0.05	0.04	0.05	0.04	0.07			
120	0.06	0.04	0.05	0.04	0.05	0.04	0.05	0.05	0.04	0.05	0.03	0.04	0.04	0.05	0.04	0.05			
125	0.05	0.04	0.05	0.04	0.05	0.04	0.05	0.05	0.03	0.04	0.02	0.04	0.03	0.04	0.04	0.05			
130	0.05	0.04	0.05	0.04	0.05	0.04	0.05	0.05	0.03	0.04	0.02	0.04	0.03	0.04	0.05	0.04			
135	0.05	0.04	0.05	0.03	0.05	0.04	0.05	0.05	0.02	0.04	0.02	0.04	0.03	0.04	0.04	0.05			
140	0.04	0.03	0.04	0.03	0.04	0.03	0.04	0.05	0.02	0.04	0.02	0.04	0.03	0.04	0.04	0.04			
145	0.04	0.02	0.04	0.03	0.04	0.03	0.04	0.04	0.02	0.03	0.02	0.04	0.03	0.04	0.04	0.04			
150	0.04	0.02	0.04	0.03	0.04	0.03	0.04	0.04	0.02	0.03	0.02	0.03	0.03	0.03	0.03	0.04			
155	0.03	0.02	0.04	0.03	0.04	0.03	0.04	0.05	0.02	0.03	0.02	0.03	0.03	0.03	0.03	0.03			
160	0.03	0.02	0.03	0.03	0.03	0.03	0.04	0.05	0.02	0.03	0.02	0.03	0.03	0.03	0.03	0.03			
165	0.03	0.02	0.03	0.03	0.03	0.03	0.05	0.04	0.02	0.03	0.02	0.03	0.03	0.03	0.03	0.03			
170	0.03	0.02	0.03	0.03	0.03	0.03	0.04	0.03	0.02	0.03	0.02	0.03	0.03	0.03	0.03	0.03			
175	0.03	0.02	0.03	0.03	0.03	0.03	0.04	0.03	0.02	0.03	0.02	0.03	0.03	0.03	0.03	0.03			
180	0.02	0.02	0.03	0.03	0.03	0.03	0.03	0.04	0.02	0.02	0.02	0.03	0.03	0.03	0.03	0.03			

C Range: 0 - 360DEG
 C Interval: 22.5DEG
 Test Speed: HIGH
 Temperature:25.3DEG
 Test Date:2023-08-31

□ Range: 0 - 180DEG
 □ Interval: 1.0DEG
 Test System:EVERFINE GO-2000B_V1 SYSTEM V2.00.454
 Humidity:65.0%
 Test Distance:6.020m [K=1.0000]
 Remarks: