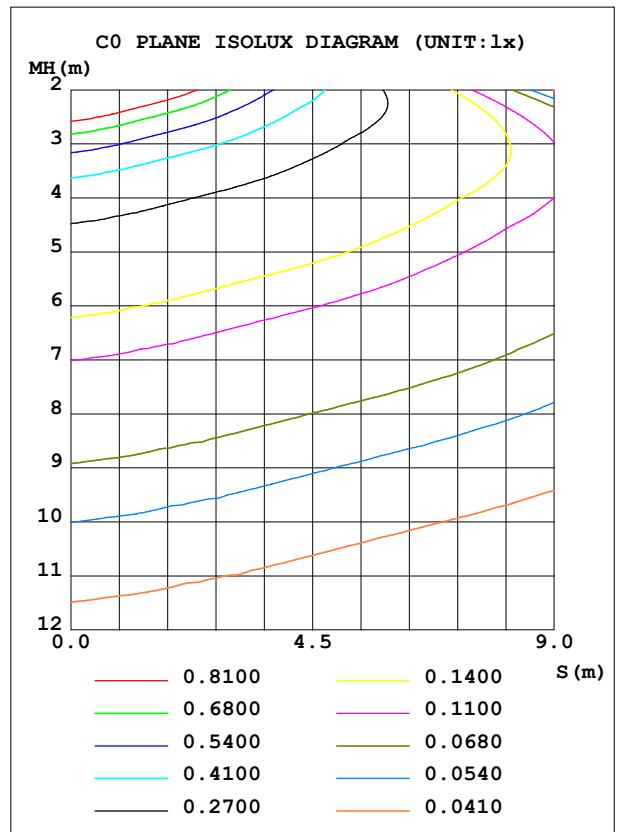
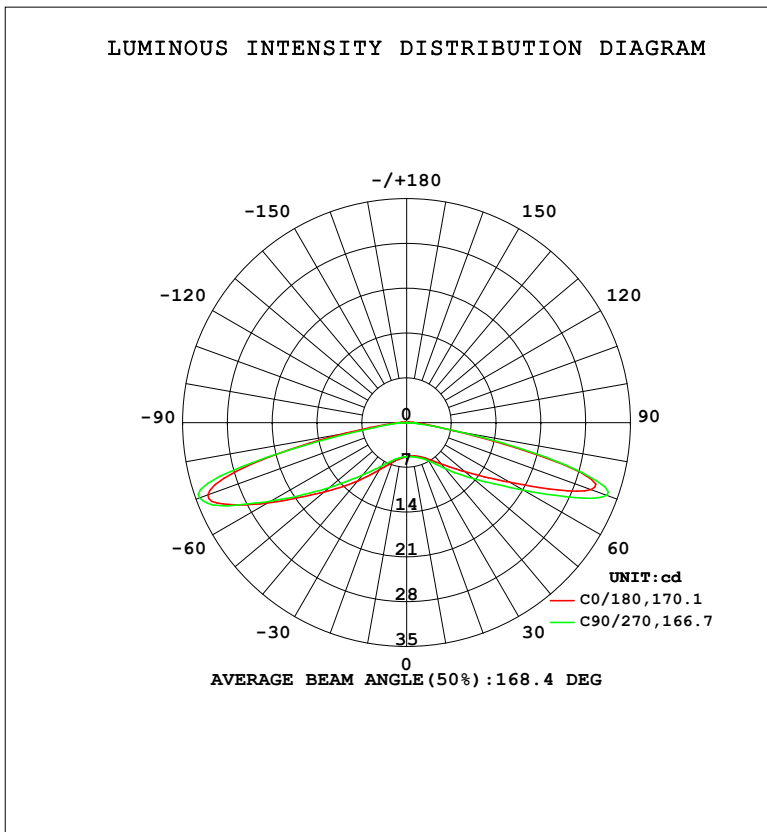


LUMINAIRE PHOTOMETRIC TEST REPORT

Test:U:23.999V I:0.0307A P:0.7368W PF:1.0000 Freq:50.00Hz Lamp Flux:94.3055x1 lm		
NAME: MOD-30K	TYPE: LED Module	WEIGHT:
SPEC.: 0.72W	DIM.: 60*18*9 (MM)	SERIAL No.: 001
MFR.: Flexfire LEDs, Inc.	SUR.:	Shielding Angle: 170

DATA OF LAMP		PHOTOMETRIC DATA			
MODEL	MOD-30K	Imax (cd)	34.46	S/MH	3.62
NOMINAL POWER (W)	0.72	LOR (%)	100.0		
RATED VOLTAGE (V)	24	TOTAL FLUX (lm)	94.306	<input type="checkbox"/> UP, DN (C0-180)	0.5,48.0
NOMINAL FLUX (lm)	94.3055	CIE CLASS	DIRECT	<input type="checkbox"/> UP, DN (C180-360)	0.5,51.0
LAMPS INSIDE	1	<input type="checkbox"/> up (%)	1.0	CIBSE SHR NOM	2.00
TEST VOLTAGE (V)	24	<input type="checkbox"/> down (%)	99.0	CIBSE SHR MAX	2.00



C Range: 0 - 360DEG  
 C Interval: 22.5DEG  
 Test Speed: HIGH  
 Temperature: 25.3DEG  
 Test Date: 2023-08-31

Y Range: 0 - 180DEG  
 Y Interval: 1.0DEG  
 Test System: EVERFINE GO-2000B\_V1 SYSTEM V2.00.454  
 Humidity: 65.0%  
 Test Distance: 6.020m [K=1.0000]  
 Remarks:

**ZONAL FLUX DIAGRAM**

ZONAL FLUX DIAGRAM:

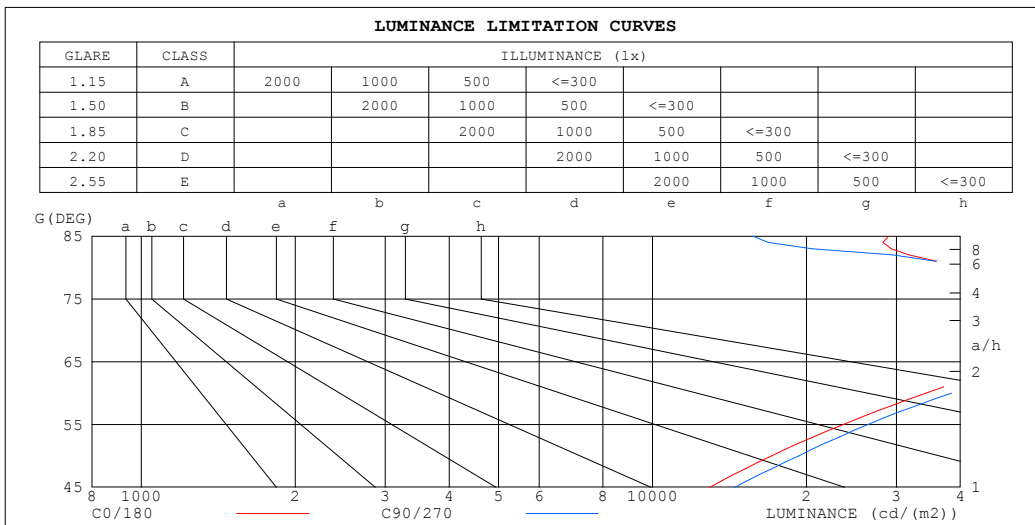
°	C0	C45	C90	C135	C180	C225	C270	C315	°	□ zone	□ total	%lum,lamp
10	5.314	5.342	5.419	5.597	5.711	5.695	5.567	5.449	0- 10	0.5181	0.5181	0.55,0.55
20	5.671	5.644	5.858	6.322	6.642	6.595	6.286	5.906	10- 20	1.645	2.163	2.29,2.29
30	6.571	6.474	6.904	7.863	8.505	8.520	7.820	6.967	20- 30	3.121	5.284	5.6,5.6
40	8.467	8.360	9.364	10.96	11.89	12.13	10.70	9.292	30- 40	5.481	10.77	11.4,11.4
50	11.97	12.07	13.68	15.57	16.88	17.60	15.80	13.30	40- 50	9.489	20.25	21.5,21.5
60	18.64	19.43	21.17	23.82	25.19	26.21	24.53	20.61	50- 60	16.34	36.59	38.8,38.8
70	30.66	32.97	33.26	34.00	33.06	33.92	34.45	33.04	60- 70	28.09	64.68	68.6,68.6
80	7.940	8.378	8.256	9.636	9.753	8.942	7.343	7.822	70- 80	25.23	89.91	95.3,95.3
90	1.483	1.328	0.6673	1.213	1.316	1.190	0.6634	0.2721	80- 90	3.447	93.35	99,99
100	0.4986	0.3182	0.0437	0.3270	0.4563	0.3067	0.0396	0.1911	90-100	0.6309	93.98	99.7,99.7
110	0.1484	0.0643	0.0437	0.0838	0.1335	0.0456	0.0333	0.0439	100-110	0.1613	94.14	99.8,99.8
120	0.0536	0.0478	0.0437	0.0481	0.0370	0.0332	0.0250	0.0293	110-120	0.0544	94.20	99.9,99.9
130	0.0473	0.0457	0.0458	0.0440	0.0247	0.0332	0.0250	0.0293	120-130	0.0345	94.23	99.9,99.9
140	0.0453	0.0436	0.0417	0.0398	0.0247	0.0332	0.0250	0.0272	130-140	0.0280	94.26	100,100
150	0.0391	0.0436	0.0375	0.0356	0.0247	0.0249	0.0250	0.0272	140-150	0.0204	94.28	100,100
160	0.0350	0.0374	0.0354	0.0314	0.0247	0.0249	0.0250	0.0272	150-160	0.0137	94.30	100,100
170	0.0288	0.0311	0.0271	0.0272	0.0247	0.0249	0.0250	0.0272	160-170	0.0079	94.30	100,100
180	0.0247	0.0394	0.0250	0.0272	0.0247	0.0249	0.0250	0.0272	170-180	0.0026	94.31	100,100
DEG	LUMINOUS INTENSITY:cd									UNIT:lm		

C Range: 0 - 360DEG  
 C Interval: 22.5DEG  
 Test Speed: HIGH  
 Temperature:25.3DEG  
 Test Date:2023-08-31

Y Range: 0 - 180DEG  
 Y Interval: 1.0DEG  
 Test System:EVERFINE GO-2000B\_V1 SYSTEM V2.00.454  
 Humidity:65.0%  
 Test Distance:6.020m [K=1.0000]  
 Remarks:

**LUMINANCE LIMITATION CURVES**

Test:U:23.999V I:0.0307A P:0.7368W PF:1.0000 Freq:50.00Hz Lamp Flux:94.3055x1 lm		
NAME: MOD-30K	TYPE: LED Module	WEIGHT:
SPEC.: 0.72W	DIM.: 60*18*9 (MM)	SERIAL No.: 001
MFR.: Flexfire LEDs, Inc.	SUR.:	Shielding Angle: 170



LUMINANCE cd/(m2)		
G (DEG)	C0/180	C90/270
85	28942	15752
80	41993	43159
75	89712	90479
70	82323	88268
65	53297	58769
60	34243	38432
55	23606	26402
50	17106	19316
45	12936	14477

C Range: 0 - 360DEG  
 C Interval: 22.5DEG  
 Test Speed: HIGH  
 Temperature:25.3DEG  
 Test Date:2023-08-31

Y Range: 0 - 180DEG  
 Y Interval: 1.0DEG  
 Test System:EVERFINE GO-2000B\_V1 SYSTEM V2.00.454  
 Humidity:65.0%  
 Test Distance:6.020m [K=1.0000]  
 Remarks:

**WEC AND CCEC**

Test:U:23.999V I:0.0307A P:0.7368W PF:1.0000 Freq:50.00Hz Lamp Flux:94.3055x1 lm								
NAME: MOD-30K			TYPE: LED Module			WEIGHT:		
SPEC.: 0.72W			DIM.: 60*18*9 (MM)			SERIAL No.: 001		
MFR.: Flexfire LEDs, Inc.			SUR.:			Shielding Angle: 170		

□cc	80%		70%		50%		30%		10%		0				
□w	50%	30%	10%	50%	30%	10%	50%	30%	10%	50%	30%	10%	0		
□fc	20%		20%		20%		20%		20%		0				
RCR	RCR:Room Cavity Ratio						Wall Exitance Coefficients(WEC)								
0.0															
1.0	.480	.273	.086	.472	.269	.085	.457	.262	.084	.443	.256	.082	.431	.250	.081
2.0	.434	.238	.073	.427	.235	.072	.413	.230	.071	.401	.225	.070	.389	.220	.069
3.0	.384	.204	.061	.377	.202	.061	.365	.198	.060	.354	.194	.059	.343	.190	.059
4.0	.339	.176	.052	.333	.174	.052	.322	.171	.051	.312	.168	.051	.303	.165	.050
5.0	.302	.154	.045	.297	.152	.044	.287	.150	.044	.278	.147	.044	.270	.144	.043
6.0	.272	.136	.039	.267	.135	.039	.258	.132	.039	.250	.130	.038	.243	.128	.038
7.0	.246	.122	.035	.242	.121	.034	.234	.119	.034	.227	.116	.034	.220	.115	.034
8.0	.225	.110	.031	.221	.109	.031	.214	.107	.031	.208	.105	.030	.202	.104	.030
9.0	.207	.100	.028	.204	.099	.028	.197	.098	.028	.192	.096	.028	.186	.095	.027
10.0	.191	.092	.025	.189	.091	.025	.183	.090	.025	.178	.088	.025	.173	.087	.025

□cc	80%		70%		50%		30%		10%		0				
□w	50%	30%	10%	50%	30%	10%	50%	30%	10%	50%	30%	10%	0		
□fc	20%		20%		20%		20%		20%		0				
RCR	RCR:Room Cavity Ratio						Ceiling Cavity Exitance Coefficients(CCEC)								
0.0															
1.0	.198	.198	.198	.169	.169	.169	.116	.116	.116	.066	.066	.066	.021	.021	.021
2.0	.199	.139	.089	.170	.120	.077	.117	.083	.053	.067	.048	.031	.022	.016	.010
3.0	.194	.123	.066	.167	.106	.057	.114	.074	.040	.066	.043	.024	.021	.014	.008
4.0	.187	.111	.053	.160	.096	.046	.110	.067	.032	.064	.039	.019	.021	.013	.006
5.0	.179	.101	.044	.153	.088	.039	.106	.061	.027	.061	.036	.016	.020	.012	.005
6.0	.170	.094	.039	.146	.081	.034	.101	.057	.024	.058	.033	.014	.019	.011	.005
7.0	.161	.087	.035	.139	.075	.030	.096	.053	.021	.056	.031	.013	.018	.010	.004
8.0	.153	.081	.032	.132	.070	.028	.091	.049	.020	.053	.029	.012	.017	.010	.004
9.0	.145	.076	.029	.125	.066	.026	.087	.046	.018	.051	.027	.011	.016	.009	.004
10.0	.138	.072	.027	.119	.062	.024	.083	.044	.017	.048	.026	.010	.016	.009	.003

C Range: 0 - 360DEG  
 C Interval: 22.5DEG  
 Test Speed: HIGH  
 Temperature:25.3DEG  
 Test Date:2023-08-31

Y Range: 0 - 180DEG  
 Y Interval: 1.0DEG  
 Test System:EVERFINE GO-2000B\_V1 SYSTEM V2.00.454  
 Humidity:65.0%  
 Test Distance:6.020m [K=1.0000]  
 Remarks:

**UGR(Unified Glare Rating) Table**

Test:U:23.999V I:0.0307A P:0.7368W PF:1.0000 Freq:50.00Hz Lamp Flux:94.3055x1 lm										
NAME: MOD-30K			TYPE: LED Module				WEIGHT:			
SPEC.: 0.72W			DIM.: 60*18*9 (MM)				SERIAL No.: 001			
MFR.: Flexfire LEDs, Inc.			SUR.:				Shielding Angle: 170			
ceiling/cavity	0.7	0.7	0.5	0.5	0.3	0.7	0.7	0.5	0.5	0.3
walls	0.5	0.3	0.5	0.3	0.3	0.5	0.3	0.5	0.3	0.3
working plane	0.2	0.2	0.2	0.2	0.2	0.2	0.2	0.2	0.2	0.2
Room dimensions	Viewed crosswise					Viewed endwise				
x = 2H y = 2H	13.9	18.0	14.6	18.6	19.2	15.1	19.1	15.8	19.7	20.4
3H	20.3	24.1	21.0	24.7	25.4	21.0	24.8	21.7	25.4	26.1
4H	22.3	26.0	23.1	26.7	27.4	22.7	26.4	23.5	27.0	27.7
6H	22.8	26.3	23.6	27.0	27.7	23.2	26.6	24.0	27.3	28.1
8H	22.8	26.1	23.6	26.9	27.6	23.2	26.5	24.0	27.2	28.0
12H	22.8	26.0	23.6	26.8	27.6	23.1	26.3	23.9	27.1	27.9
4H 2H	15.8	19.5	16.6	20.2	20.9	17.0	20.6	17.7	21.3	22.0
3H	21.7	25.0	22.5	25.7	26.5	22.3	25.5	23.1	26.3	27.0
4H	23.6	26.6	24.5	27.4	28.3	23.9	26.9	24.8	27.7	28.6
6H	24.1	26.8	25.0	27.7	28.5	24.5	27.2	25.3	28.0	28.9
8H	24.2	26.7	25.1	27.6	28.5	24.5	27.0	25.4	27.9	28.8
12H	24.2	26.5	25.1	27.4	28.4	24.5	26.8	25.4	27.7	28.6
8H 4H	24.1	26.7	25.0	27.5	28.4	24.4	26.9	25.3	27.8	28.7
6H	24.7	26.8	25.6	27.7	28.7	25.0	27.1	25.9	28.0	29.0
8H	24.8	26.7	25.8	27.6	28.6	25.0	26.9	26.0	27.9	28.9
12H	24.9	26.5	25.9	27.5	28.6	25.1	26.7	26.1	27.7	28.8
12H 4H	24.1	26.5	25.1	27.4	28.3	24.4	26.7	25.3	27.6	28.6
6H	24.7	26.6	25.7	27.6	28.6	25.0	26.9	26.0	27.8	28.9
8H	24.8	26.5	25.8	27.5	28.5	25.1	26.8	26.1	27.7	28.8
CIE190: 2010										

CIE190: 2010  
Area: 0.0011 m2

C Range: 0 - 360DEG  
C Interval: 22.5DEG  
Test Speed: HIGH  
Temperature:25.3DEG  
Test Date:2023-08-31

Y Range: 0 - 180DEG  
Y Interval: 1.0DEG  
Test System:EVERFINE GO-2000B\_V1 SYSTEM V2.00.454  
Humidity:65.0%  
Test Distance:6.020m [K=1.0000]  
Remarks:

**UTILIZATION FACTORS TABLE**

Test:U:23.999V I:0.0307A P:0.7368W PF:1.0000 Freq:50.00Hz Lamp Flux:94.3055x1 lm		
NAME: MOD-30K	TYPE: LED Module	WEIGHT:
SPEC.: 0.72W	DIM.: 60*18*9 (MM)	SERIAL No.: 001
MFR.: Flexfire LEDs, Inc.	SUR.:	Shielding Angle: 170

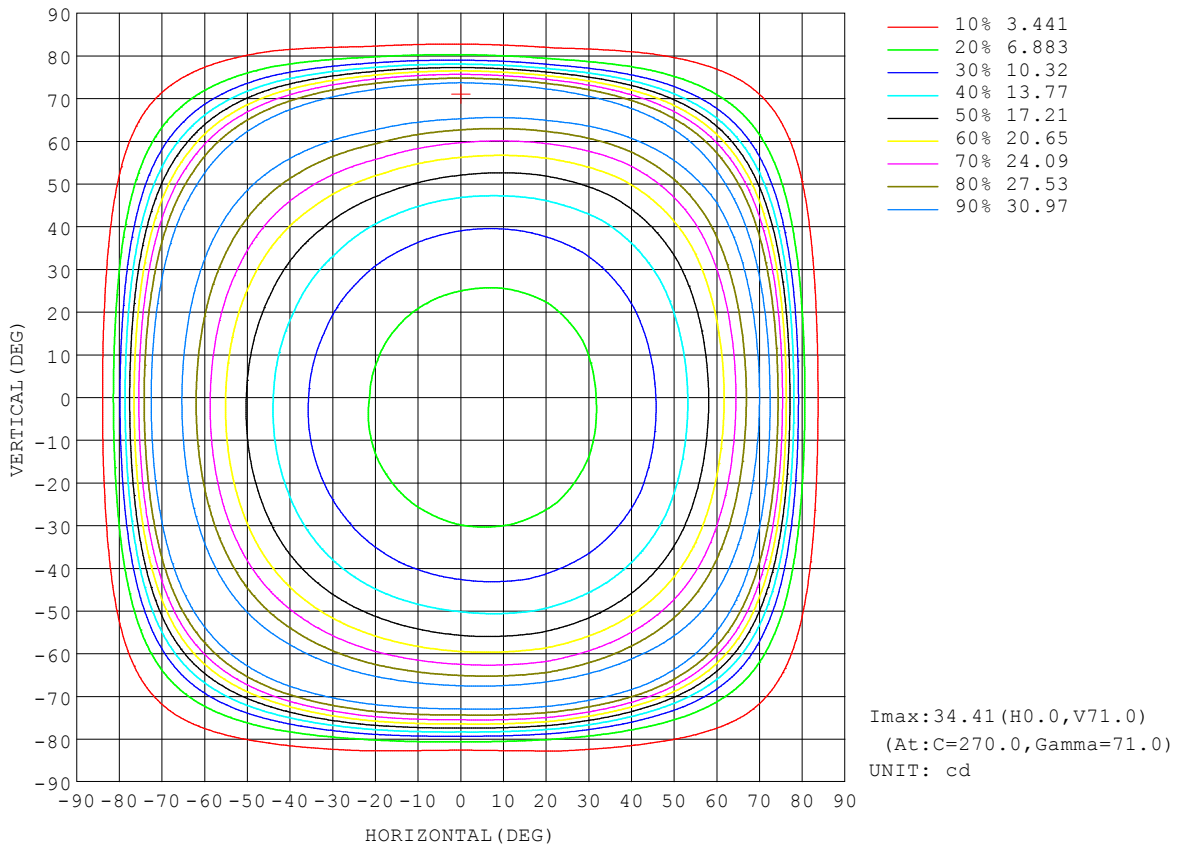
REFLECTANCE										
Ceiling	0.8	0.8	0.8	0.7	0.7	0.7	0.5	0.5	0.5	0
Walls	0.7	0.5	0.3	0.7	0.5	0.3	0.7	0.5	0.3	0
Working plane	0.2	0.2	0.2	0.2	0.2	0.2	0.2	0.2	0.2	0
ROOM INDEX	UTILIZATION FACTORS (PERCENT) $k(RI) \times RCR = 5$									
k = 0.60	41	26	18	40	26	18	39	25	17	9
0.80	49	33	23	48	33	23	45	32	23	14
1.00	56	40	30	55	40	30	52	42	29	19
1.25	64	48	37	62	47	37	58	45	36	26
1.50	70	55	44	68	54	44	64	52	42	32
2.00	79	66	56	77	64	55	73	62	53	42
2.50	86	74	64	83	72	63	79	69	61	50
3.00	91	80	71	88	78	70	83	75	68	57
4.00	98	89	82	95	87	80	90	83	77	66
5.00	102	95	88	99	93	87	94	89	84	73
ROOM INDEX	UF(total)									Direct
According to DIN EN 13032-2 2004			Suspended				SHRNOM = 1.25			

C Range: 0 - 360DEG  
 C Interval: 22.5DEG  
 Test Speed: HIGH  
 Temperature:25.3DEG  
 Test Date:2023-08-31

Y Range: 0 - 180DEG  
 Y Interval: 1.0DEG  
 Test System:EVERFINE GO-2000B\_V1 SYSTEM V2.00.454  
 Humidity:65.0%  
 Test Distance:6.020m [K=1.0000]  
 Remarks:

**ISOCANDELA DIAGRAM**

Test:U:23.999V I:0.0307A P:0.7368W PF:1.0000 Freq:50.00Hz Lamp Flux:94.3055x1 lm		
NAME: MOD-30K	TYPE: LED Module	WEIGHT:
SPEC.: 0.72W	DIM.: 60*18*9 (MM)	SERIAL No.: 001
MFR.: Flexfire LEDs, Inc.	SUR.:	Shielding Angle: 170

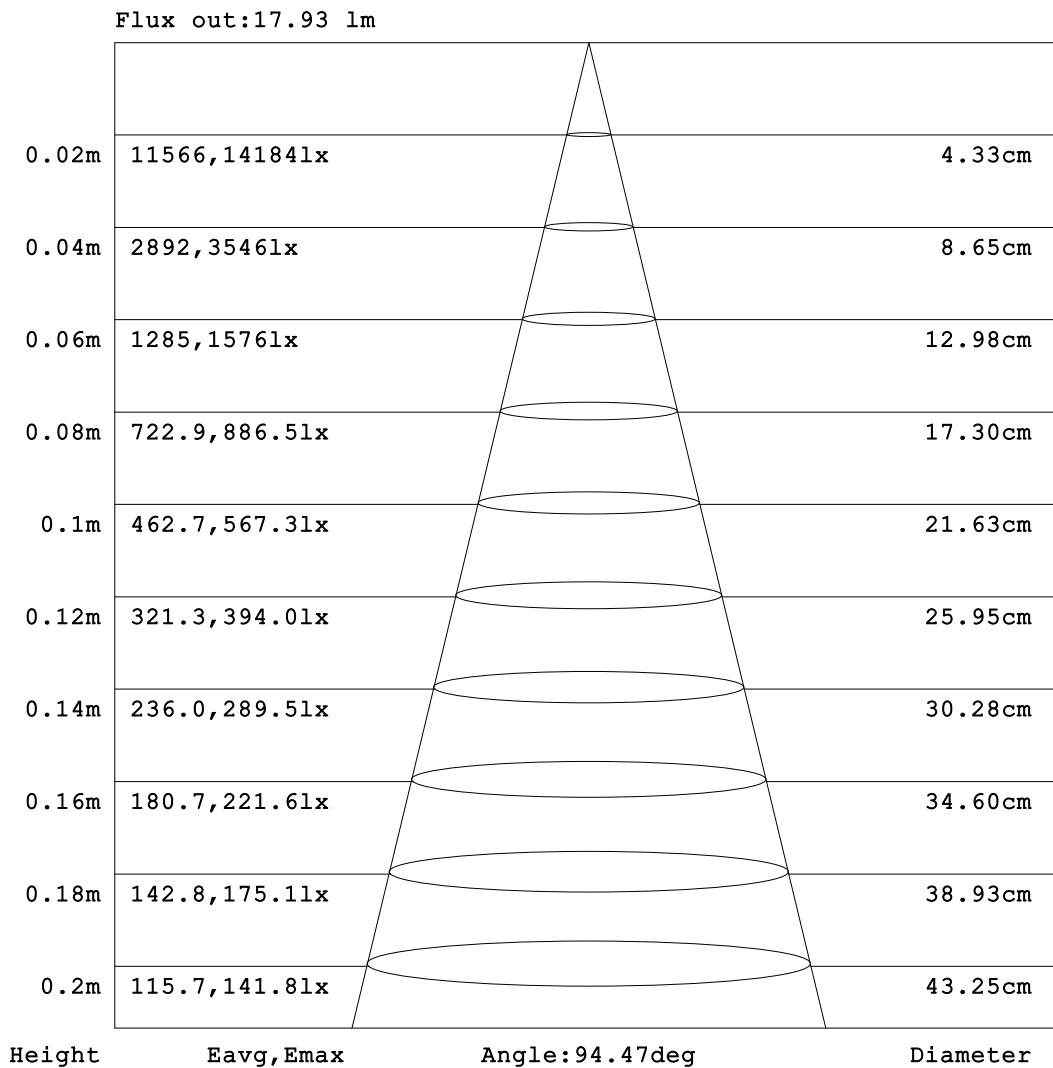


C Range: 0 - 360DEG  
 C Interval: 22.5DEG  
 Test Speed: HIGH  
 Temperature:25.3DEG  
 Test Date:2023-08-31

Y Range: 0 - 180DEG  
 Y Interval: 1.0DEG  
 Test System:EVERFINE GO-2000B\_V1 SYSTEM V2.00.454  
 Humidity:65.0%  
 Test Distance:6.020m [K=1.0000]  
 Remarks:

**AAI Figure**

Test:U:23.999V I:0.0307A P:0.7368W PF:1.0000 Freq:50.00Hz Lamp Flux:94.3055x1 lm		
NAME: MOD-30K	TYPE: LED Module	WEIGHT:
SPEC.: 0.72W	DIM.: 60*18*9 (MM)	SERIAL No.: 001
MFR.: Flexfire LEDs, Inc.	SUR.:	Shielding Angle: 170



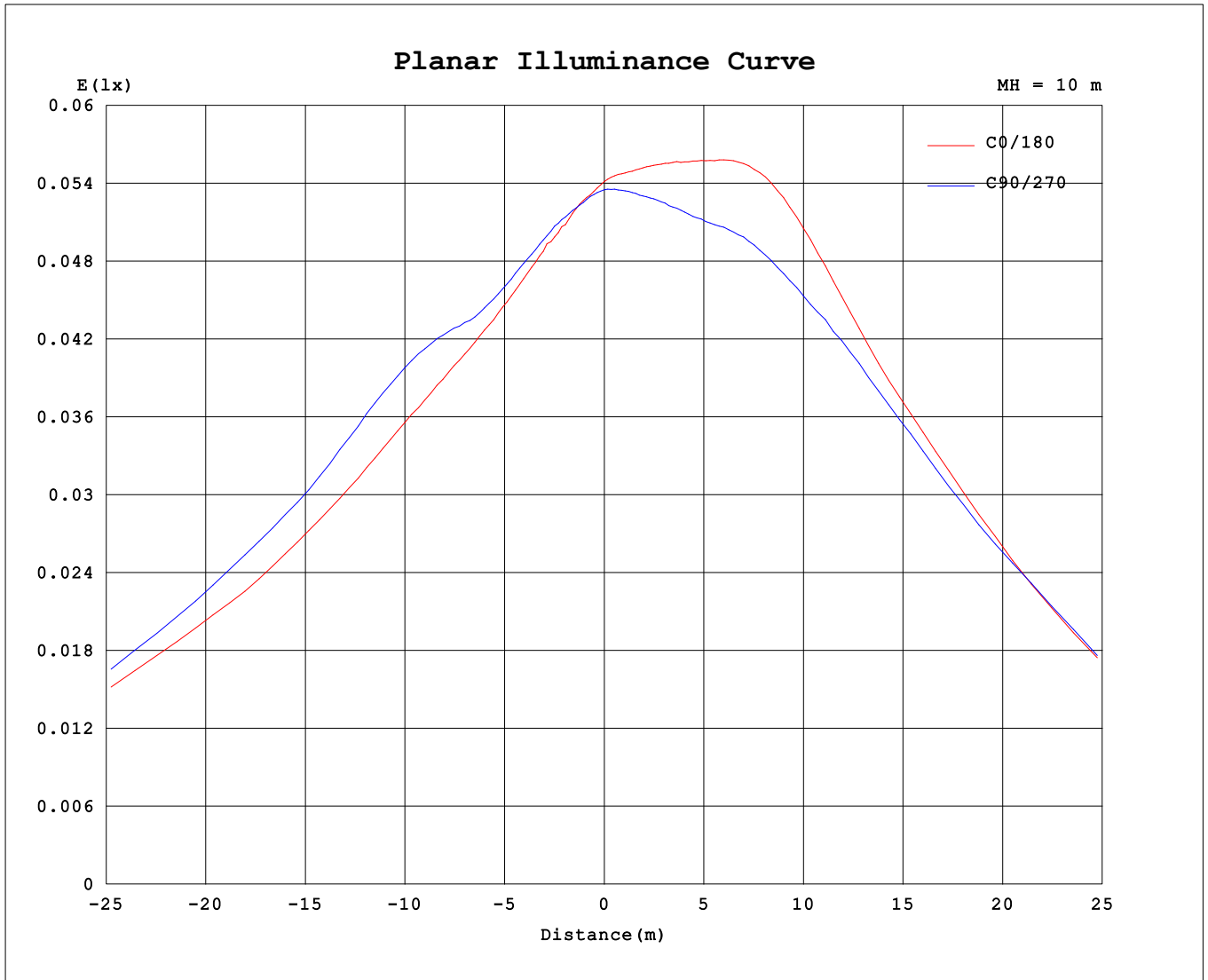
Note:The Curves indicate the illuminated area and the average illumination when the luminaire is at different distance.

C Range: 0 - 360DEG  
 C Interval: 22.5DEG  
 Test Speed: HIGH  
 Temperature:25.3DEG  
 Test Date:2023-08-31

Y Range: 0 - 180DEG  
 Y Interval: 1.0DEG  
 Test System:EVERFINE GO-2000B\_V1 SYSTEM V2.00.454  
 Humidity:65.0%  
 Test Distance:6.020m [K=1.0000]  
 Remarks:



Planar Illuminance Curve



C Range: 0 - 360DEG  
 C Interval: 22.5DEG  
 Test Speed: HIGH  
 Temperature: 25.3DEG  
 Test Date: 2023-08-31

Y Range: 0 - 180DEG  
 Y Interval: 1.0DEG  
 Test System: EVERFINE GO-2000B\_V1 SYSTEM V2.00.454  
 Humidity: 65.0%  
 Test Distance: 6.020m [K=1.0000]  
 Remarks:

LUMINOUS DISTRIBUTION INTENSITY DATA

Test:U:23.999V I:0.0307A P:0.7368W PF:1.0000 Freq:50.00Hz Lamp Flux:94.3055x1 lm		
NAME: MOD-30K	TYPE: LED Module	WEIGHT:
SPEC.: 0.72W	DIM.: 60*18*9 (MM)	SERIAL No.: 001
MFR.: Flexfire LEDs, Inc.	SUR.:	Shielding Angle: 170

Table--1

UNIT: cd

C (DEG) □ (DEG)	0	22.5	45	67.5	90	112.5	135	157.5	180	202.5	225	247.5	270	292.5	315	337.5			
0	5.36	5.36	5.36	5.36	5.36	5.36	5.36	5.36	5.36	5.36	5.36	5.36	5.36	5.36	5.36	5.36			
5	5.30	5.30	5.30	5.33	5.34	5.39	5.43	5.47	5.48	5.48	5.47	5.44	5.42	5.36	5.37	5.31			
10	5.31	5.33	5.34	5.38	5.42	5.50	5.60	5.67	5.71	5.72	5.70	5.64	5.57	5.48	5.45	5.34			
15	5.44	5.45	5.44	5.52	5.59	5.73	5.88	6.02	6.09	6.11	6.05	5.97	5.86	5.71	5.63	5.50			
20	5.67	5.68	5.64	5.75	5.86	6.06	6.32	6.51	6.64	6.69	6.59	6.47	6.29	6.05	5.91	5.75			
25	6.03	6.00	5.98	6.10	6.27	6.56	6.93	7.22	7.41	7.51	7.38	7.18	6.91	6.58	6.32	6.13			
30	6.57	6.50	6.47	6.63	6.90	7.33	7.86	8.26	8.51	8.68	8.52	8.22	7.82	7.35	6.97	6.71			
35	7.36	7.22	7.22	7.44	7.89	8.47	9.23	9.72	10.00	10.3	10.1	9.66	9.09	8.44	7.93	7.58			
40	8.47	8.28	8.36	8.68	9.36	10.1	11.0	11.6	11.9	12.3	12.1	11.5	10.7	9.94	9.29	8.80			
45	9.96	9.71	9.95	10.4	11.3	12.1	13.0	13.7	14.2	14.6	14.5	13.8	12.8	11.9	11.1	10.4			
50	12.0	11.8	12.1	12.6	13.7	14.6	15.6	16.4	16.9	17.5	17.6	17.1	15.8	14.4	13.3	12.5			
55	14.7	14.6	15.0	15.6	16.7	17.8	19.0	19.9	20.4	21.2	21.4	21.1	19.6	17.8	16.3	15.3			
60	18.6	18.9	19.4	19.9	21.2	22.4	23.8	24.7	25.2	26.0	26.2	26.1	24.5	22.5	20.6	19.3			
65	24.5	25.0	25.6	26.0	27.4	28.5	29.9	30.4	30.3	31.0	31.4	31.7	30.8	28.9	26.7	25.2			
70	30.7	31.5	33.0	33.3	33.3	33.4	34.0	33.4	33.1	33.4	33.9	34.4	34.4	33.8	33.0	31.4			
75	25.3	26.4	27.3	27.3	25.8	26.6	26.5	26.0	25.1	24.5	25.6	26.1	26.7	26.0	25.8	25.3			
80	7.94	8.51	8.38	8.84	8.26	9.20	9.64	9.89	9.75	9.01	8.94	7.62	7.34	6.82	7.82	8.00			
85	2.75	2.84	2.64	2.53	1.51	2.42	2.54	2.67	2.67	2.55	2.50	2.03	2.07	2.04	2.48	2.69			
90	1.48	1.49	1.33	1.16	0.67	1.07	1.21	1.33	1.32	1.28	1.19	0.97	0.66	0.97	0.27	1.06			
95	0.87	0.84	0.69	0.38	0.04	0.45	0.65	0.76	0.80	0.77	0.64	0.41	0.04	0.20	0.31	0.83			
100	0.50	0.45	0.32	0.04	0.04	0.06	0.33	0.43	0.46	0.44	0.31	0.07	0.04	0.06	0.19	0.45			
105	0.27	0.23	0.12	0.04	0.04	0.04	0.16	0.24	0.25	0.24	0.13	0.04	0.04	0.05	0.11	0.24			
110	0.15	0.11	0.06	0.04	0.04	0.04	0.08	0.14	0.13	0.14	0.05	0.04	0.03	0.05	0.04	0.13			
115	0.09	0.05	0.05	0.04	0.04	0.04	0.06	0.07	0.07	0.08	0.03	0.04	0.03	0.05	0.04	0.07			
120	0.05	0.04	0.05	0.04	0.04	0.04	0.05	0.04	0.04	0.04	0.03	0.03	0.02	0.04	0.03	0.05			
125	0.05	0.04	0.05	0.04	0.04	0.04	0.05	0.04	0.02	0.04	0.03	0.03	0.02	0.04	0.03	0.04			
130	0.05	0.04	0.05	0.04	0.05	0.04	0.04	0.04	0.02	0.04	0.03	0.03	0.02	0.04	0.03	0.04			
135	0.05	0.04	0.05	0.04	0.04	0.03	0.04	0.04	0.02	0.04	0.03	0.03	0.02	0.04	0.03	0.04			
140	0.05	0.04	0.04	0.04	0.04	0.02	0.04	0.03	0.02	0.04	0.03	0.03	0.02	0.04	0.03	0.04			
145	0.04	0.03	0.05	0.04	0.04	0.02	0.04	0.03	0.02	0.03	0.02	0.02	0.02	0.03	0.03	0.04			
150	0.04	0.02	0.04	0.04	0.04	0.02	0.04	0.03	0.02	0.03	0.02	0.03	0.02	0.03	0.03	0.03			
155	0.04	0.02	0.04	0.03	0.03	0.02	0.03	0.03	0.02	0.03	0.02	0.03	0.02	0.03	0.03	0.03			
160	0.03	0.02	0.04	0.03	0.04	0.02	0.03	0.03	0.02	0.02	0.02	0.02	0.02	0.03	0.03	0.03			
165	0.03	0.02	0.03	0.03	0.03	0.02	0.03	0.03	0.02	0.02	0.02	0.03	0.02	0.03	0.03	0.03			
170	0.03	0.02	0.03	0.03	0.03	0.02	0.03	0.03	0.02	0.02	0.02	0.02	0.02	0.03	0.03	0.03			
175	0.03	0.02	0.04	0.04	0.03	0.02	0.03	0.03	0.02	0.02	0.02	0.02	0.02	0.03	0.03	0.03			
180	0.02	0.02	0.04	0.04	0.02	0.02	0.03	0.03	0.02	0.02	0.02	0.02	0.02	0.03	0.03	0.03			

C Range: 0 - 360DEG  
 C Interval: 22.5DEG  
 Test Speed: HIGH  
 Temperature:25.3DEG  
 Test Date:2023-08-31

Y Range: 0 - 180DEG  
 Y Interval: 1.0DEG  
 Test System:EVERFINE GO-2000B\_V1 SYSTEM V2.00.454  
 Humidity:65.0%  
 Test Distance:6.020m [K=1.0000]  
 Remarks: