



Leona[®]

All-in-One Smart Dimmer Driver Tunable White

Product Data Sheet



works with
amazon alexa



works with
Google Assistant



Class 2



Leona[®] All-in-One Smart Dimmer Driver Tunable White

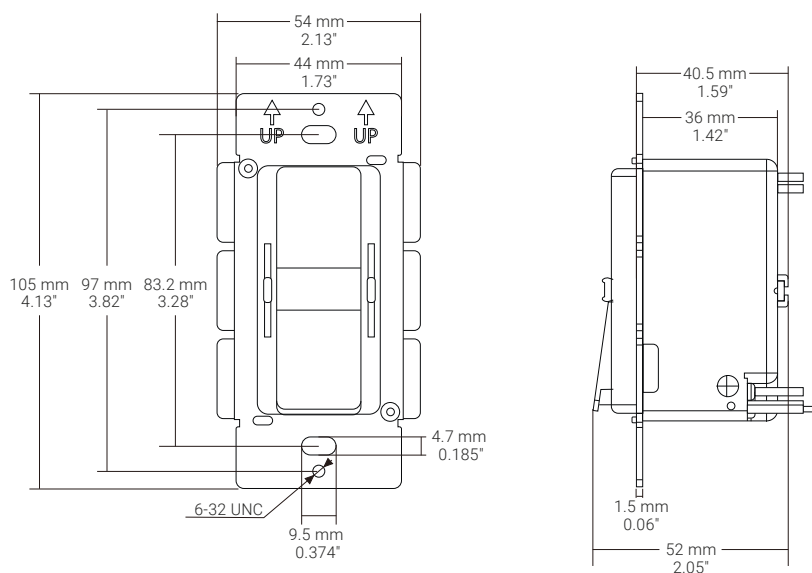
Product Data Sheet



Product Features

- Smart dimmer switch with integrated Class 2 LED driver.
- Compatible with single color, static white, and tunable white LED lighting.
- Adjust brightness and color temperature independently via slider controls.
- Voice control capable when used with Amazon Alexa or Google Home.
- Leona[®] Smart app compatible for functions such as timers, scheduling, scenes and more.
- Maintains control via cellular network if Wi-Fi is unavailable.
- Decora-style design matches existing switches.

Mechanical Drawing



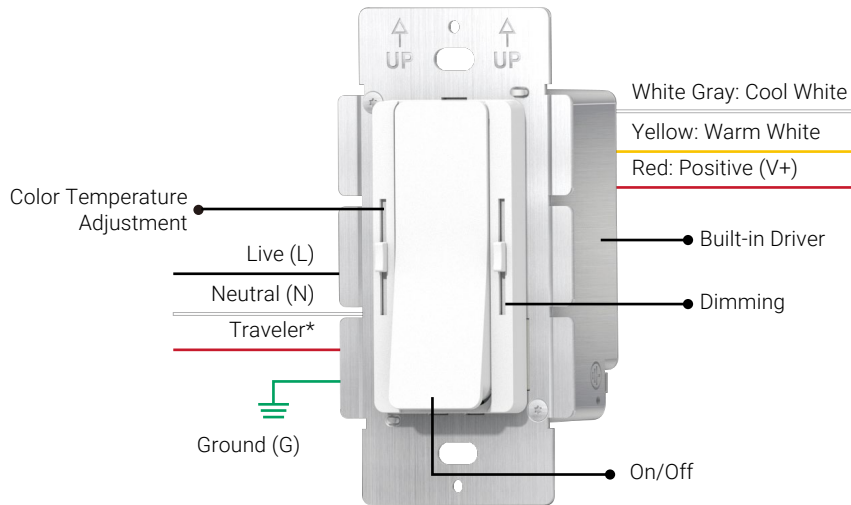
Specifications

SKU	Input Voltage	Output Voltage	Output Wattage	Number of Channels	Dimming Range
LEO-DYN-WALL-PS-24V-W	120V AC	24V DC	96 W	2	0.3%-100%

Signal Type	Operating Frequency	Ambient Temperature	Operating Temperature	IP Rating	Weight
Wi-Fi + Bluetooth	2.4 GHz	-40 °F to 104 °F (-40 °C to 40 °C)	-40 °F to 194 °F (-40 °C to 90 °C)	IP20: Indoor, Dry Location	0.75 lb

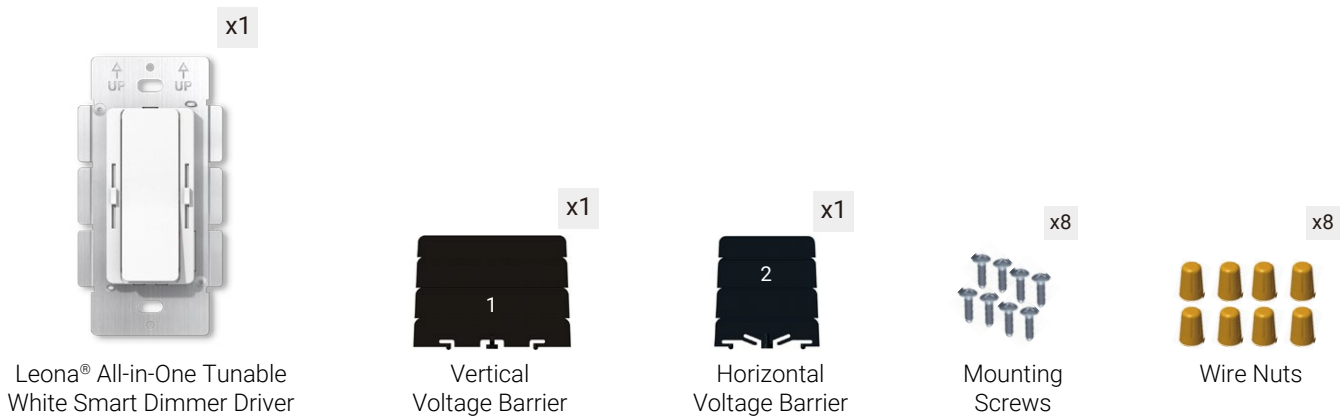
Controller Functions

- **On/Off:** Press the switch to turn your lights on or off.
- **Color Temperature Adjustment:** Use the slider to customize your light's shade of white.
- **Dimming:** Use the slider to adjust your light's brightness level.
- **Built-in Driver:** Converts high-voltage 120V AC power to low-voltage 24V DC power. The driver is fully integrated into the switch.



*The traveler wire in a 3-way switch allows you to control a lighting fixture from a companion on/off switch.

Included Accessories



Note: A trimplate is not included.

Tools Needed

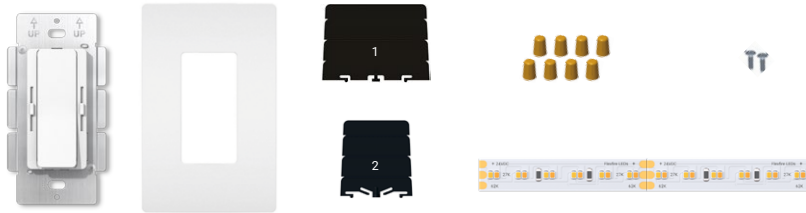


Installation Instructions

We know you've got a clear vision and a stunning end result in mind. All it needs now is the right technical planning—like where your dimmer switch and LED lights will go.

1. Check Your Components

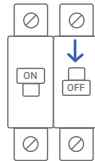
Make sure you have everything you need before starting. Check the voltage and entire load of your LEDs. They should be 24V, under 96W



2. Turn the Power Off at the Circuit Breaker

CAUTION: Risk of electric shock

For your safety, when working with electricity, please turn off the power at the circuit breaker before installing the dimmer switch.



3. If You Are Replacing an Existing Switch

3.1. Remove the trimplate and the screws using both screwdrivers.

3.2. Gently pull out the existing switch from the gang box and identify the wires connected to the switch. If needed, mark the wires for easy installation of the dimmer switch.

3.3. Disconnect the wires from the existing switch.

4. If Installing in a Multi-Gang Box, Remove the Dimmer Fins

If you are installing switches in a multi-gang box, you'll have to break off the dimmer fins of the dimmer switch depending on the box configuration. Using pliers, bend each fin up and down until it snaps off.

- If your dimmer switch will be installed on the left side of the multi-gang box, break off the fins on the right side of the dimmer switch.
- If your dimmer switch will be installed on the right side of the multi-gang box, break off the fins on the left side of the dimmer switch.
- If you are installing it in the middle of a multi-gang box, you'll need to break off the dimmer fins on both sides of the dimmer



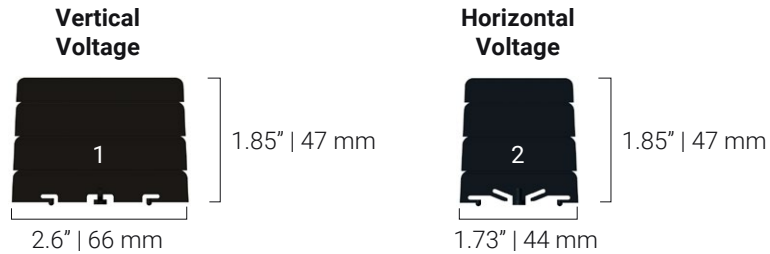
Gang Box Not Included

NO LOAD DERATING: Unlike standard, high-voltage AC dimmer switches, removing the dimmer fins does not reduce the driver's maximum wattage capacity.

5. Attach the Voltage Barrier

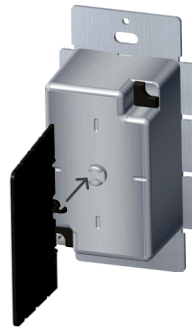
IMPORTANT: Per NEC Code Section 725.136, Class 1 and Class 2 circuits can be in the same enclosure only if a barrier separates them.

5.1. Choose the barrier type that best fits your needs from the two options below:



Vertical Barrier Installation

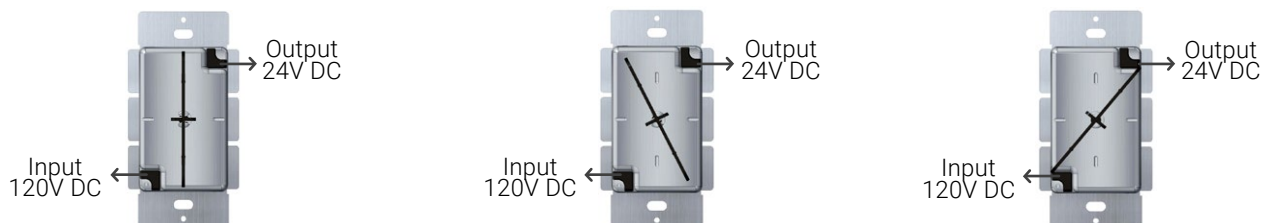
a. Align the barrier vertically with the device's slotted pivot post.



b. Follow the arrow and push until the buckle locks onto the slotted pivot post.

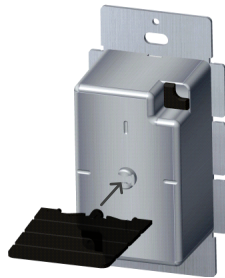


c. Rotate the barrier according to your installation needs, following one of the options below:



Horizontal Barrier Installation

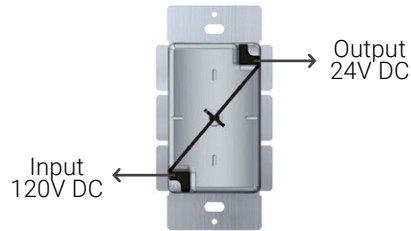
a. Align the barrier horizontally with the device's slotted pivot post.



b. Follow the arrow and push until the buckle locks onto the slotted pivot post.

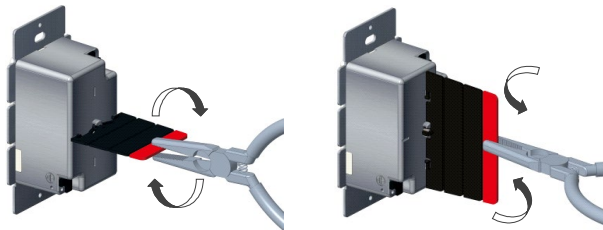


c. The barrier can rotate left and right by a limited angle to adjust the separation between the high- and low-voltage zones.



5.2. Shallow Gang Boxes

For shallow gang boxes, the barrier can be shortened. Using pliers, bend the barrier fin back and forth, or up and down, until it snaps off.



5.2. Shallow Gang Boxes

For shallow gang boxes, the barrier can be shortened. Using pliers, bend the barrier fin back and forth, or up and down, until it



6. Connect the Dimmer Switch

6.1. Strip the Wires

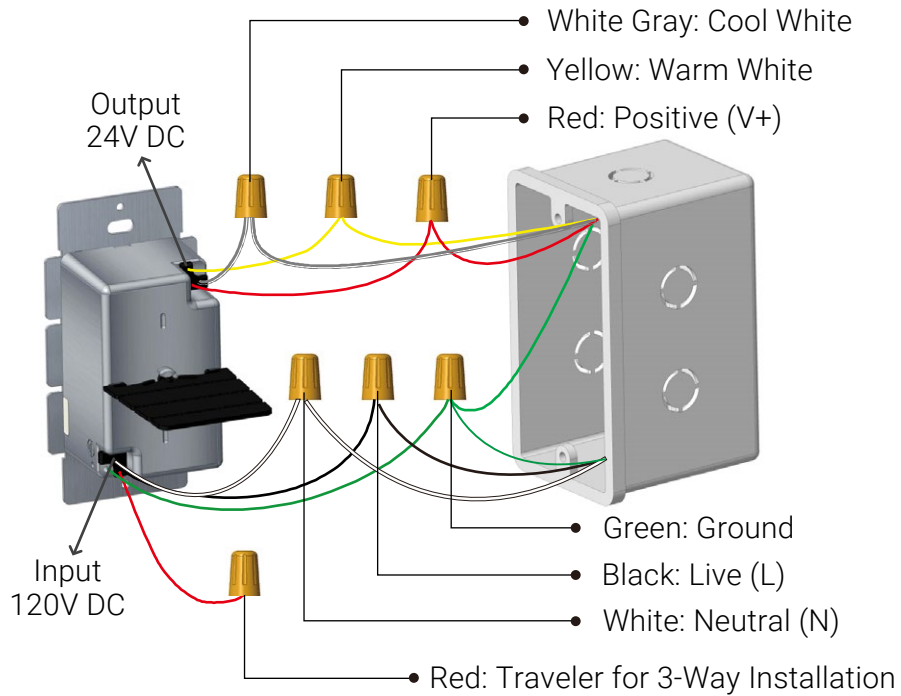
Strip about 5/16" (8 mm) of insulation from each wire on the dimmer.



6.2. Wire the Dimmer

Before wiring the dimmer, please ensure that:

- The power is off, and no electricity is going to your circuit.
- The included voltage barrier is used when installing in a gang box.
- You use wire rated for at least 300V.



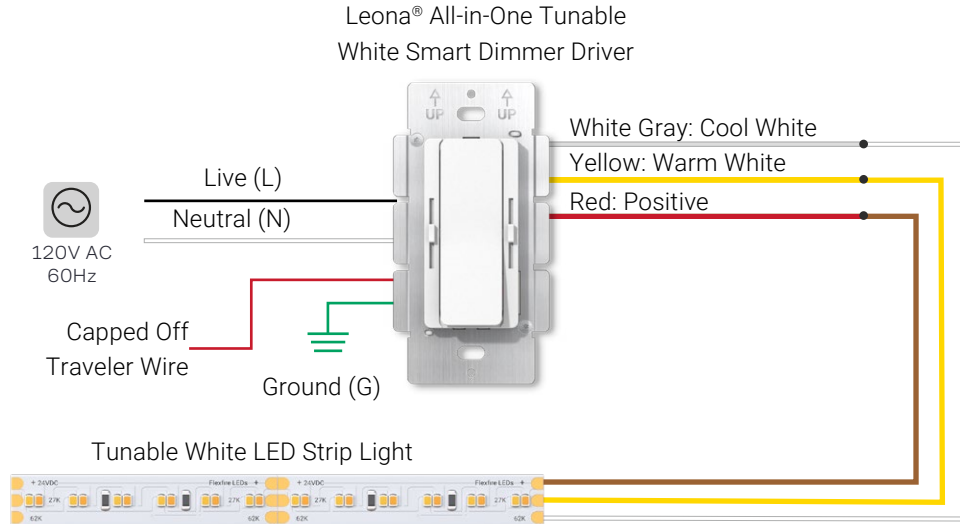
Note: The gang box and vertical voltage barrier must comply with UL514C, Article 6.UL514C, Article 6.

Important!

- When using the Leona® All-in-One Smart Dimmer Driver Tunable White as a single-color dimmer switch, select one of the negative channels on the dimmer output.
- If using the white/gray wire (cool white), set the color temperature slider on the left to the top.
- If using the yellow wire (warm white), set the color temperature slider on the left to the bottom.
- You can now enjoy the full 96W output when using a single channel!

7. Test Your Components

Before installing, connect your tunable white LED strip light to the dimmer switch and verify that all components are working properly.



8. Mount the Dimmer and Attach the Trimplate

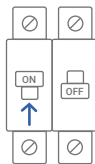
8.1. Attach the dimmer to the gang box using the included mounting screws.

8.2. Attach and secure the trimplate.



9. Turn the Power On at the Circuit Breaker

Turn the power back on. Your LED lights should now turn on and operate normally.

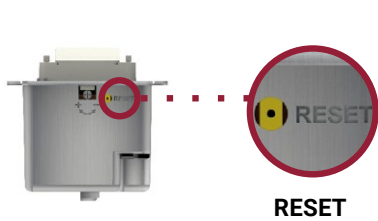


10. Enjoy Your Lights!

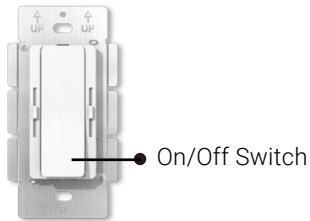
Turn on your lights and enjoy the glow!

Troubleshooting

If something isn't working correctly, you can reset your dimmer using one of the two methods below:



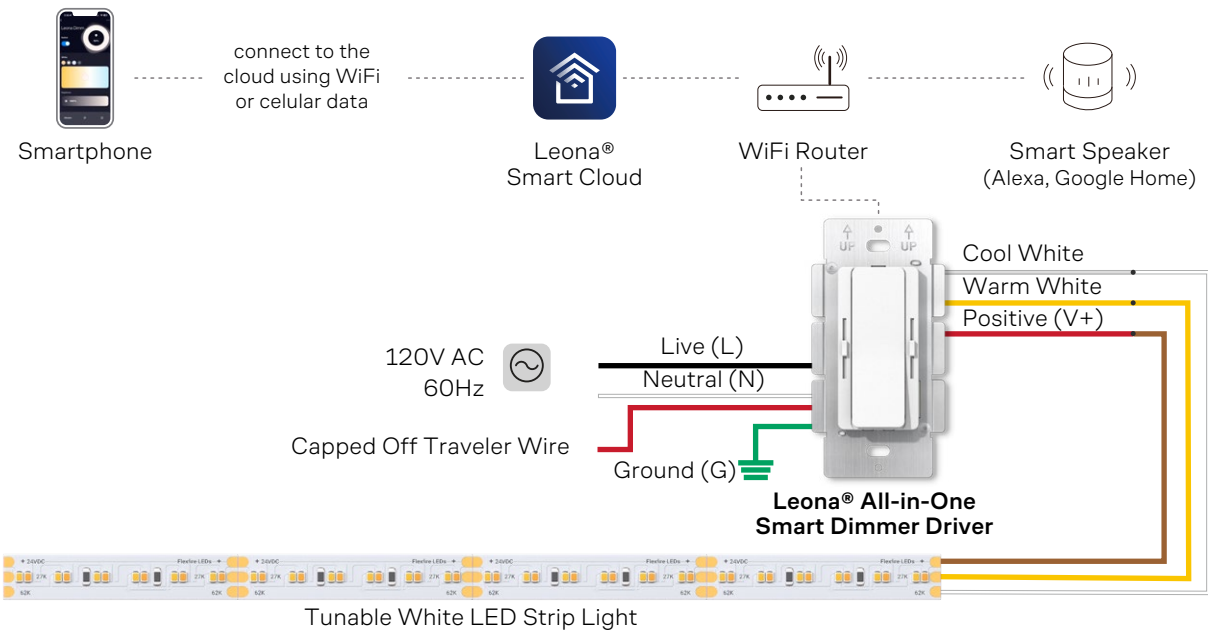
Method 1: Press the reset button for 3 seconds.



Method 2: Press the on/off switch 6 times consecutively.

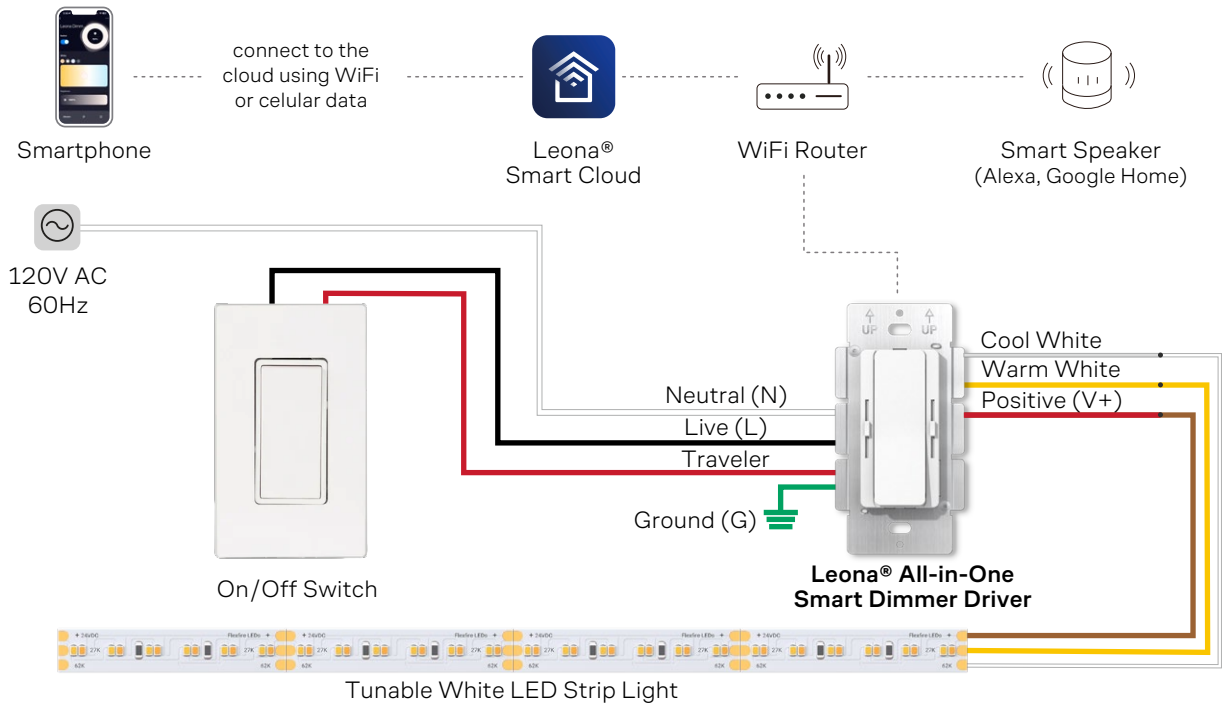
Wiring Diagrams

Single-Pole Wiring for Tunable White



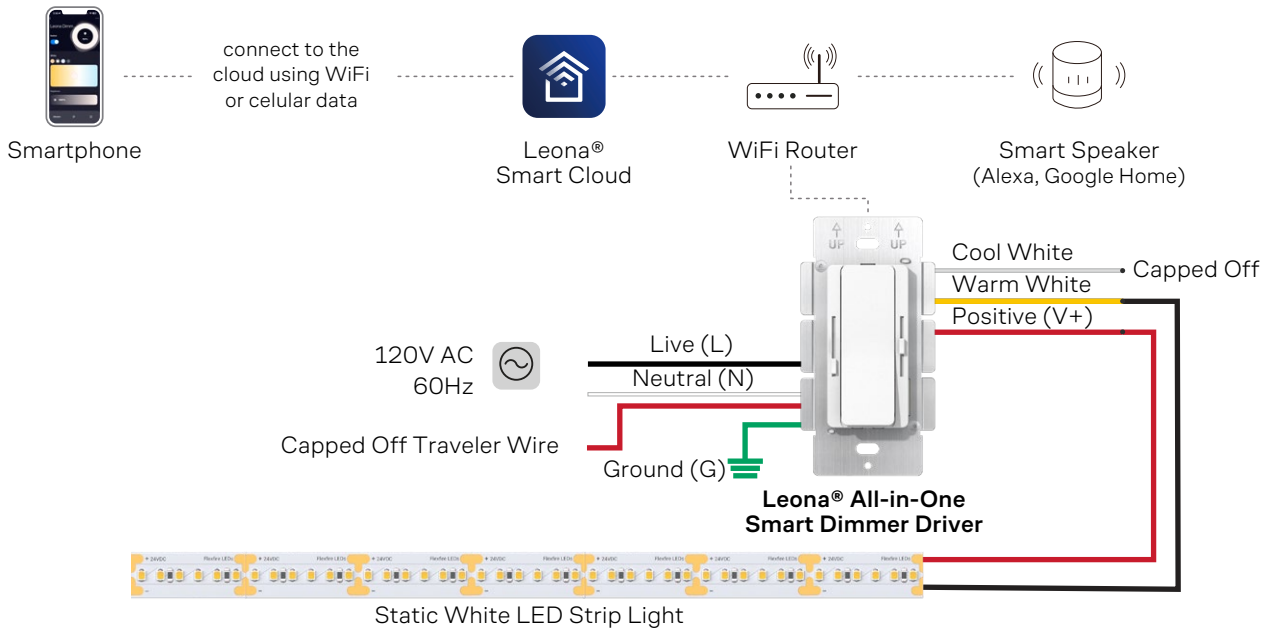
————— Wired Connection
 Wireless Connection

3-Way Wiring for Tunable White



————— Wired Connection
 - - - - - Wireless Connection

Single-Pole Wiring for Static White/Single Color



————— Wired Connection
 - - - - - Wireless Connection

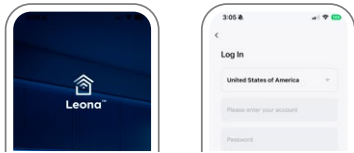
Connect to the Leona® Smart App



- Using your smartphone, **connect to a 2.4GHz Wi-Fi network and enable quick pairing via Bluetooth.** **Note:** Leona® Smart products are not compatible with 5GHz Wi-Fi signals.

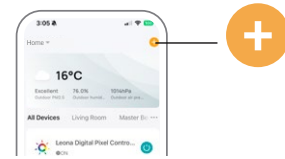


- Download Leona® Smart app** from the iOS App Store or Google Play Store by searching 'Leona Smart'.



- Open the Leona® Smart app and either **sign up** for a new account or **log in** if you already have one.

- Power up your setup** and press the on/off switch 6 times to enter pairing mode.

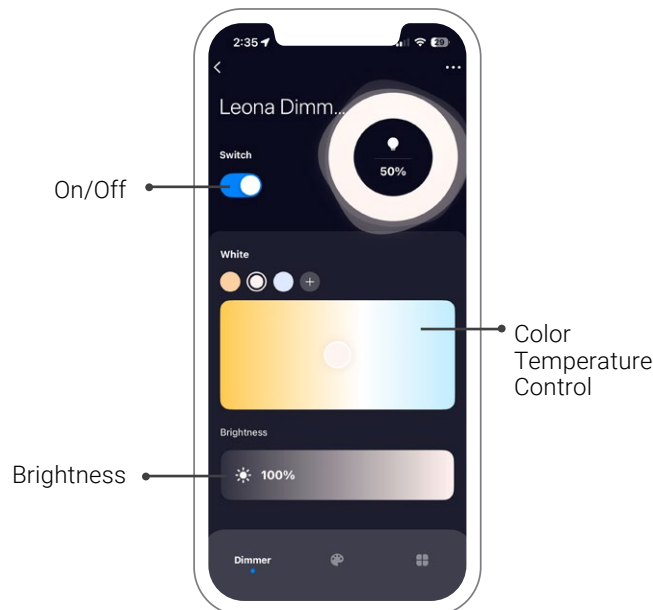


- In the app, **tap '+'** to add the device and follow the prompts to pair your dimmer switch with the Leona® Smart app.



- Once your device is paired, you can assign it to a room or go to the main menu to explore the dimmer's features. You can also connect your Leona® dimmer to third-party smart home platforms like Google Home and Amazon Alexa.

Leona® Smart App Interface & Functions



Safety & Disclosures

1. Installation must comply with local and national electrical codes.
2. A qualified, licensed electrician should install your strips for safety and proper performance.
3. Only use copper wiring rated for at least 194 °F (90 °C) and certified for external connection to electrical equipment.
4. Ensure the proper wire is installed between the dimmer driver and the fixture. When choosing wire, factor in voltage drop, amperage rating, and type (in-wall-rated, wet-location-rated, etc.). Inadequate wire installation could overheat wires and cause a fire.
5. Do not install in an environment where excessive heat may be present, such as near a fireplace. Always verify the ambient temperature ratings before installation.
6. Do not replace the faceplate or modify the product beyond the instructions, or the warranty will be void.
7. We reserve the right to modify and improve the design of this product without prior notice.
8. This device complies with Part 15 of the FCC Rules. Operation is subject to the following two conditions:
 - (1) This device may not cause harmful interference.
 - (2) This device may experience reduced performance when operated near sources of radio-frequency or electromagnetic noise. You are responsible for ensuring the device is operated in an environment free of excessive interference.

Warranty

This product has a 5-year limited warranty from the date of shipment. This warranty only includes the main product outlined in this installation guide and does not include the additional components and lights that are used as a reference.



Leona®