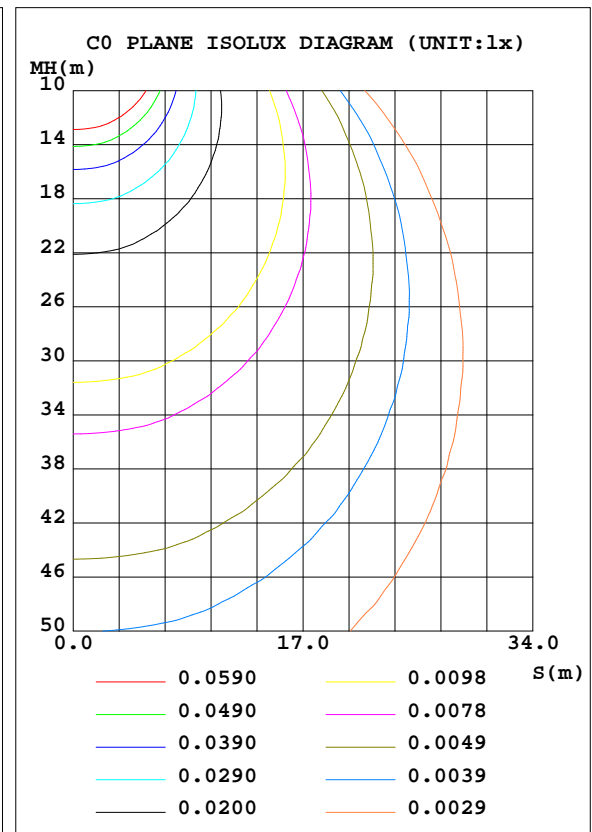
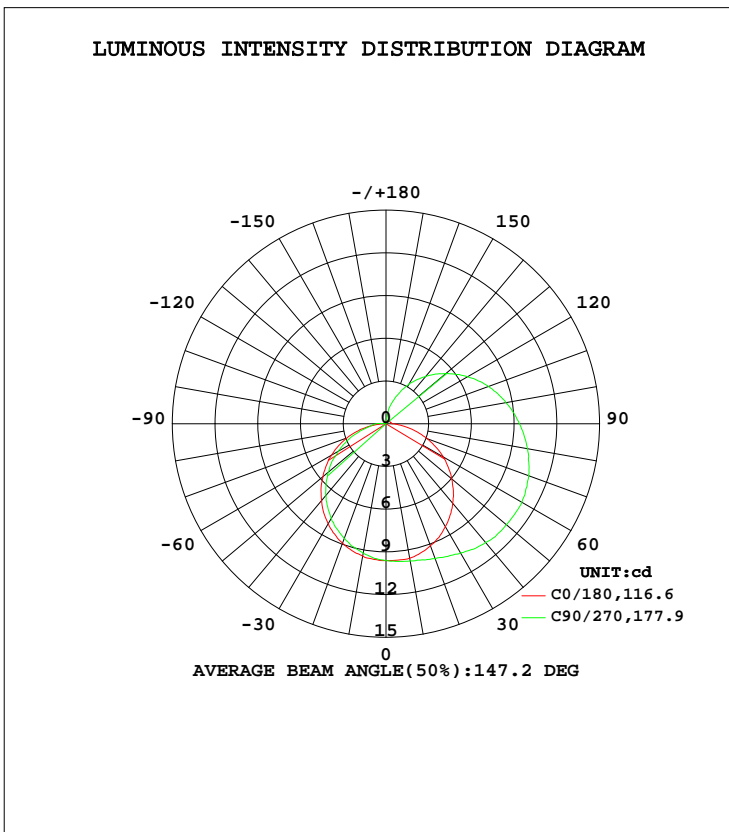


LUMINAIRE PHOTOMETRIC TEST REPORT

Test:U:24.00V I:0.3776A P:9.060W PF:0 Lamp Flux:49.4768x1 lm		
NAME: LUC-S-RGB	TYPE:LED Strip	WEIGHT:
SPEC.: 9W	DIM.: 1000*10*9(MM)	SERIAL No.: 001
MFR.: Flexfire LEDs, Inc.	SUR.:0..01*1.0*0.002	Shielding Angle:120

DATA OF LAMP		PHOTOMETRIC DATA			
MODEL		Imax(cd)	11.04	S/MH(C0/180)	1.26
NOMINAL POWER(W)		LOR(%)	100.0	S/MH(C90/270)	1.20
RATED VOLTAGE(V)		TOTAL FLUX(lm)	49.477	η UP, DN(C0-180)	21.7,50.2
NOMINAL FLUX(lm)	49.4768	CIE CLASS	SEMI-D.	η UP, DN(C180-360)	0.7,27.5
LAMPS INSIDE	1	η up(%)	22.4	CIBSE SHR NOM	1.50
TEST VOLTAGE(V)		η down(%)	77.6	CIBSE SHR MAX	1.55



C Range: 0 - 360DEG  
 C Interval: 90.0DEG  
 Test Speed: HIGH  
 Temperature:25.3DEG  
 Test Date:2021-10-18

γ Range: 0 - 180DEG  
 γ Interval: 1.0DEG  
 Test System:EVERFINE GO-2000B\_V1 SYSTEM V2.0.351  
 Humidity:65.0%  
 Test Distance:9.660m [K=1.0000]  
 Remarks:

## ZONAL FLUX DIAGRAM

## ZONAL FLUX DIAGRAM:

$\gamma$	C0	C45	C90	C135	C180	C225	C270	C315	$\gamma$	$\Phi$ zone	$\Phi$ total	%lum,lamp
10	9.584	9.705	9.783	9.644	9.434	9.277	9.229	9.336	0- 10	0.9125	0.9125	1.84,1.84
20	9.122	9.705	10.09	9.644	8.926	8.638	8.569	8.690	10- 20	2.643	3.556	7.19,7.19
30	8.346	9.598	10.47	9.521	8.120	7.769	7.678	7.858	20- 30	4.121	7.676	15.5,15.5
40	7.286	9.446	10.89	9.291	7.044	6.687	6.572	6.674	30- 40	5.218	12.89	26.1,26.1
50	6.033	9.142	11.04	8.984	5.776	5.376	5.281	5.351	40- 50	5.828	18.72	37.8,37.8
60	4.644	8.593	11.03	8.415	4.431	3.990	3.883	3.920	50- 60	5.906	24.63	49.8,49.8
70	3.077	7.923	10.64	7.692	2.924	2.573	2.455	2.444	60- 70	5.471	30.10	60.8,60.8
80	1.569	7.131	10.09	6.892	1.357	1.187	1.197	1.075	70- 80	4.624	34.72	70.2,70.2
90	0.4782	6.324	9.369	5.984	0.2534	0.4566	0.7059	0.4298	80- 90	3.689	38.41	77.6,77.6
100	0.3734	5.714	8.555	5.061	0.1941	0.0457	0.0768	0.0154	90-100	2.907	41.32	83.5,83.5
110	0.3286	5.104	7.665	4.445	0.1194	0.0457	0.0768	0.0154	100-110	2.478	43.80	88.5,88.5
120	0.3135	4.419	6.620	3.324	0.1194	0.0457	0.0768	0.0154	110-120	2.029	45.83	92.6,92.6
130	0.2538	3.703	5.484	2.400	0.1194	0.0457	0.0768	0.0154	120-130	1.513	47.34	95.7,95.7
140	0.2390	2.957	4.333	1.862	0.1194	0.0457	0.0768	0.0158	130-140	1.034	48.37	97.8,97.8
150	0.2090	2.134	3.196	1.231	0.1194	0.0457	0.0768	0.0923	140-150	0.6307	49.00	99,99
160	0.1791	1.387	1.998	0.9077	0.1194	0.0457	0.0768	0.0923	150-160	0.3224	49.33	99.7,99.7
170	0.1344	0.8384	0.8017	0.7229	0.1194	0.0457	0.0768	0.0923	160-170	0.1275	49.45	100,100
180	0.1194	0.1371	0.1075	0.0923	0.1194	0.0457	0.0768	0.0923	170-180	0.0232	49.48	100,100
DEG	LUMINOUS INTENSITY:cd									UNIT:lm		

Conical surface Flux(90deg): 15.766 lm

%lum = 31.9%

%lamp = 31.9%

Conical surface Flux(120deg): 24.628 lm

%lum = 49.8%

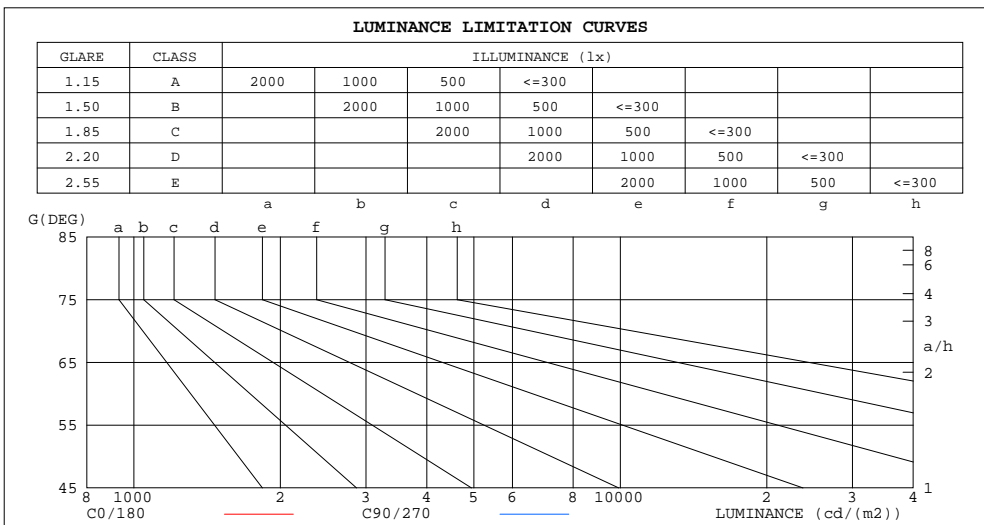
%lamp = 49.8%

C Range: 0 - 360DEG  
 C Interval: 90.0DEG  
 Test Speed: HIGH  
 Temperature:25.3DEG  
 Test Date:2021-10-18

$\gamma$  Range: 0 - 180DEG  
 $\gamma$  Interval: 1.0DEG  
 Test System:EVERFINE GO-2000B\_V1 SYSTEM V2.0.351  
 Humidity:65.0%  
 Test Distance:9.660m [K=1.0000]  
 Remarks:

LUMINANCE LIMITATION CURVES

Test:U:24.00V I:0.3776A P:9.060W PF:0 Lamp Flux:49.4768x1 lm		
NAME: LUC-S-RGB	TYPE:LED Strip	WEIGHT:
SPEC.: 9W	DIM.: 1000*10*9(MM)	SERIAL No.: 001
MFR.: Flexfire LEDs, Inc.	SUR.:0..01*1.0*0.002	Shielding Angle:120



LUMINANCE cd/(m2)		
G(DEG)	C0/180	C90/270
85	532221	5523294
80	459447	2872675
75	452088	1983098
70	457507	1538428
65	463734	1268355
60	472398	1090244
55	474000	951701
50	477307	849228
45	482180	770920

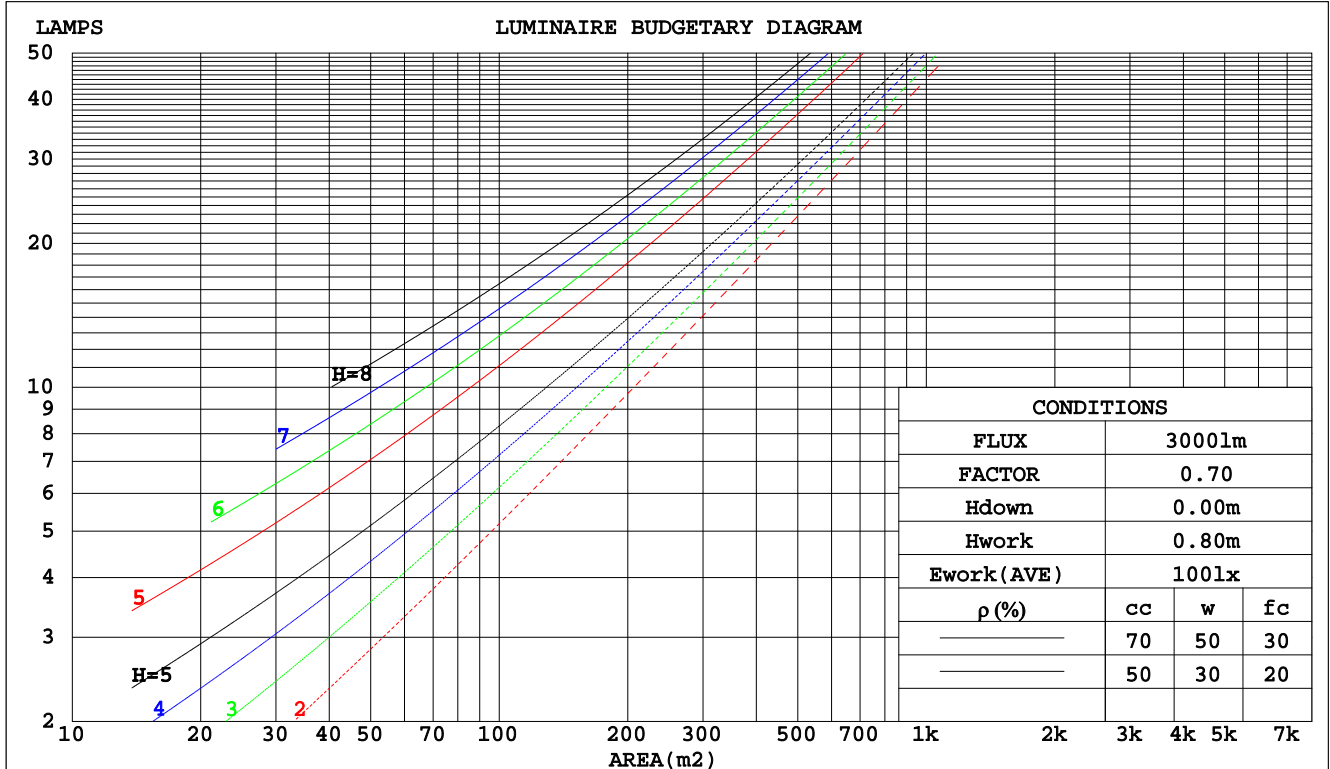
C Range: 0 - 360DEG  
 C Interval: 90.0DEG  
 Test Speed: HIGH  
 Temperature:25.3DEG  
 Test Date:2021-10-18

$\gamma$  Range: 0 - 180DEG  
 $\gamma$  Interval: 1.0DEG  
 Test System:EVERFINE GO-2000B\_V1 SYSTEM V2.0.351  
 Humidity:65.0%  
 Test Distance:9.660m [K=1.0000]  
 Remarks:

CU AND LUMINAIRE BUDGETARY ESTIMATE DIAGRAM

Test:U:24.00V I:0.3776A P:9.060W PF:0 Lamp Flux:49.4768x1 lm		
NAME: LUC-S-RGB	TYPE:LED Strip	WEIGHT:
SPEC.: 9W	DIM.: 1000*10*9(MM)	SERIAL No.: 001
MFR.: Flexfire LEDs, Inc.	SUR.:0..01*1.0*0.002	Shielding Angle:120

pcc	80%			70%			50%			30%			10%			0
	50%	30%	10%	50%	30%	10%	50%	30%	10%	50%	30%	10%	50%	30%	10%	0
pw																0
pfc	20%			20%			20%			20%			20%			0
RCR	RCR:Room Cavity Ratio      Coefficients of Utilization(CU)															
0.0	1.14	1.14	1.14	1.08	1.08	1.08	.99	.99	.99	.90	.90	.90	.82	.82	.82	.78
1.0	.95	.89	.84	.90	.85	.81	.82	.78	.74	.74	.71	.68	.67	.64	.62	.58
2.0	.81	.73	.66	.77	.70	.64	.70	.64	.59	.63	.58	.54	.57	.53	.50	.46
3.0	.70	.61	.54	.67	.58	.52	.60	.54	.48	.55	.49	.44	.49	.45	.41	.38
4.0	.61	.52	.45	.58	.50	.43	.53	.46	.40	.48	.42	.37	.43	.38	.34	.31
5.0	.54	.45	.38	.52	.43	.37	.47	.40	.34	.43	.37	.32	.39	.34	.29	.27
6.0	.49	.39	.33	.46	.38	.32	.42	.35	.29	.38	.32	.27	.35	.30	.26	.23
7.0	.44	.35	.28	.42	.33	.28	.38	.31	.26	.35	.29	.24	.32	.26	.22	.20
8.0	.40	.31	.25	.38	.30	.24	.35	.28	.23	.32	.26	.21	.29	.24	.20	.18
9.0	.36	.28	.22	.35	.27	.22	.32	.25	.20	.29	.23	.19	.27	.22	.18	.16
10.0	.33	.25	.20	.32	.24	.19	.29	.23	.18	.27	.21	.17	.25	.20	.16	.14



C Range: 0 - 360DEG  
 C Interval: 90.0DEG  
 Test Speed: HIGH  
 Temperature:25.3DEG  
 Test Date:2021-10-18

γ Range: 0 - 180DEG  
 γ Interval: 1.0DEG  
 Test System:EVERFINE GO-2000B\_V1 SYSTEM V2.0.351  
 Humidity:65.0%  
 Test Distance:9.660m [K=1.0000]  
 Remarks:

WEC AND CCEC

Test:U:24.00V I:0.3776A P:9.060W PF:0 Lamp Flux:49.4768x1 lm		
NAME: LUC-S-RGB	TYPE:LED Strip	WEIGHT:
SPEC.: 9W	DIM.: 1000*10*9(MM)	SERIAL No.: 001
MFR.: Flexfire LEDs, Inc.	SUR.:0..01*1.0*0.002	Shielding Angle:120

ρcc	80%			70%			50%			30%			10%			0
ρw	50%	30%	10%	50%	30%	10%	50%	30%	10%	50%	30%	10%	50%	30%	10%	0
ρfc	20%			20%			20%			20%			20%			0
RCR	RCR:Room Cavity Ratio						Wall Exitance Coefficients(WEC)									
0.0																
1.0	.385	.219	.069	.371	.212	.067	.345	.198	.063	.321	.185	.059	.299	.173	.056	
2.0	.333	.183	.056	.320	.176	.054	.297	.165	.051	.275	.154	.048	.254	.144	.045	
3.0	.296	.157	.047	.284	.152	.046	.263	.142	.043	.243	.133	.041	.224	.124	.038	
4.0	.266	.138	.041	.256	.134	.040	.236	.125	.037	.218	.117	.035	.201	.109	.033	
5.0	.242	.123	.036	.232	.119	.035	.214	.112	.033	.198	.104	.031	.182	.097	.029	
6.0	.221	.111	.032	.213	.107	.031	.196	.101	.029	.181	.094	.028	.167	.088	.026	
7.0	.204	.101	.029	.196	.098	.028	.181	.092	.026	.167	.086	.025	.154	.080	.024	
8.0	.189	.092	.026	.182	.090	.025	.168	.084	.024	.155	.079	.023	.143	.073	.021	
9.0	.176	.085	.024	.170	.083	.023	.157	.078	.022	.145	.073	.021	.134	.068	.020	
10.0	.165	.079	.022	.159	.077	.021	.147	.072	.020	.136	.067	.019	.125	.063	.018	

ρcc	80%			70%			50%			30%			10%			0
ρw	50%	30%	10%	50%	30%	10%	50%	30%	10%	50%	30%	10%	50%	30%	10%	0
ρfc	20%			20%			20%			20%			20%			0
RCR	RCR:Room Cavity Ratio						Ceiling Cavity Exitance Coefficients(CCEC)									
0.0	.361	.361	.361	.308	.308	.308	.211	.211	.211	.121	.121	.121	.039	.039	.039	
1.0	.357	.327	.300	.306	.281	.258	.209	.193	.179	.120	.112	.104	.039	.036	.034	
2.0	.351	.305	.266	.300	.262	.230	.206	.181	.160	.119	.106	.094	.038	.034	.031	
3.0	.343	.288	.245	.294	.249	.212	.202	.173	.149	.117	.101	.088	.037	.033	.029	
4.0	.336	.276	.230	.288	.238	.200	.198	.166	.141	.115	.097	.083	.037	.032	.027	
5.0	.328	.266	.221	.282	.230	.192	.194	.161	.136	.112	.094	.080	.036	.031	.027	
6.0	.321	.258	.214	.276	.224	.186	.190	.157	.132	.110	.092	.078	.036	.030	.026	
7.0	.314	.252	.209	.270	.218	.182	.186	.153	.129	.108	.090	.077	.035	.030	.025	
8.0	.307	.246	.205	.264	.214	.179	.183	.150	.127	.106	.089	.075	.034	.029	.025	
9.0	.301	.242	.202	.259	.210	.176	.180	.147	.125	.105	.087	.075	.034	.029	.025	
10.0	.295	.238	.199	.254	.206	.174	.176	.145	.124	.103	.086	.074	.033	.028	.024	

C Range: 0 - 360DEG  
 C Interval: 22.5DEG  
 Test Speed: HIGH  
 Temperature:25.3DEG  
 Operators:LH  
 Test Date:2017-12-09

γ Range: 0 - 180DEG  
 γ Interval: 1.0DEG  
 Test System:EVERFINE GO-2000B\_V1 SYSTEM V2.0.351  
 Humidity:65.0%  
 Test Distance:9.660m [K=1.0000]  
 Remarks:

UGR(Unified Glare Rating) Table

Test:U:24.00V I:0.3776A P:9.060W PF:0 Lamp Flux:49.4768x1 lm		
NAME: LUC-S-RGB	TYPE:LED Strip	WEIGHT:
SPEC.: 9W	DIM.: 1000*10*9(MM)	SERIAL No.: 001
MFR.: Flexfire LEDs, Inc.	SUR.:0..01*1.0*0.002	Shielding Angle:120

ceiling/cavity	0.7	0.7	0.5	0.5	0.3	0.7	0.7	0.5	0.5	0.3
walls	0.5	0.3	0.5	0.3	0.3	0.5	0.3	0.5	0.3	0.3
working plane	0.2	0.2	0.2	0.2	0.2	0.2	0.2	0.2	0.2	0.2
Room dimensions	Viewed crosswise					Viewed endwise				
x = 2H y = 2H	33.6	34.9	34.1	35.5	36.1	37.0	38.3	37.5	38.9	39.5
3H	35.3	36.6	35.9	37.2	37.8	40.1	41.4	40.7	42.0	42.6
4H	36.1	37.3	36.8	37.9	38.6	41.9	43.1	42.5	43.7	44.4
6H	36.8	37.9	37.5	38.6	39.3	43.9	45.0	44.5	45.6	46.3
8H	37.1	38.2	37.7	38.8	39.5	44.9	46.0	45.6	46.6	47.4
12H	37.3	38.3	38.0	39.0	39.8	46.2	47.2	46.8	47.9	48.6
4H 2H	35.3	36.5	35.9	37.1	37.8	37.6	38.7	38.2	39.3	40.0
3H	37.4	38.4	38.0	39.0	39.8	41.0	42.0	41.6	42.7	43.4
4H	38.3	39.3	39.0	40.0	40.7	42.9	43.9	43.6	44.6	45.3
6H	39.2	40.1	39.9	40.8	41.6	45.1	46.0	45.8	46.7	47.5
8H	39.6	40.4	40.3	41.1	41.9	46.3	47.1	47.0	47.8	48.7
12H	39.9	40.6	40.7	41.4	42.2	47.7	48.4	48.4	49.2	50.0
8H 4H	39.9	40.7	40.6	41.4	42.3	43.3	44.1	44.0	44.8	45.7
6H	41.2	41.9	42.0	42.7	43.5	45.8	46.5	46.6	47.2	48.1
8H	41.9	42.5	42.6	43.2	44.1	47.3	47.8	48.0	48.6	49.5
12H	42.4	42.9	43.2	43.7	44.6	48.9	49.4	49.7	50.2	51.1
12H 4H	40.4	41.2	41.2	41.9	42.8	43.4	44.1	44.1	44.8	45.7
6H	42.1	42.7	42.8	43.4	44.3	46.0	46.6	46.7	47.3	48.2
8H	42.9	43.4	43.7	44.2	45.1	47.5	48.0	48.3	48.8	49.7
Variations with the observer position at spacings:										
S = 1.0H	+ 0.1 / - 0.1					+ 0.1 / - 0.1				
1.5H	+ 0.2 / - 0.2					+ 0.2 / - 0.3				
2.0H	+ 0.3 / - 0.4					+ 0.3 / - 0.4				

CIE Pub.117 Corrected 49.48 lm Total Lamp Luminous Flux. (8log(F/F0) = -10.4)

C Range: 0 - 360DEG  
 C Interval: 90.0DEG  
 Test Speed: HIGH  
 Temperature:25.3DEG  
 Test Date:2021-10-18

γ Range: 0 - 180DEG  
 γ Interval: 1.0DEG  
 Test System:EVERFINE GO-2000B\_V1 SYSTEM V2.0.351  
 Humidity:65.0%  
 Test Distance:9.660m [K=1.0000]  
 Remarks:

## UTILIZATION FACTORS TABLE

Test:U:24.00V I:0.3776A P:9.060W PF:0 Lamp Flux:49.4768x1 lm		
NAME: LUC-S-RGB	TYPE:LED Strip	WEIGHT:
SPEC.: 9W	DIM.: 1000*10*9(MM)	SERIAL No.: 001
MFR.: Flexfire LEDs, Inc.	SUR.:0..01*1.0*0.002	Shielding Angle:120

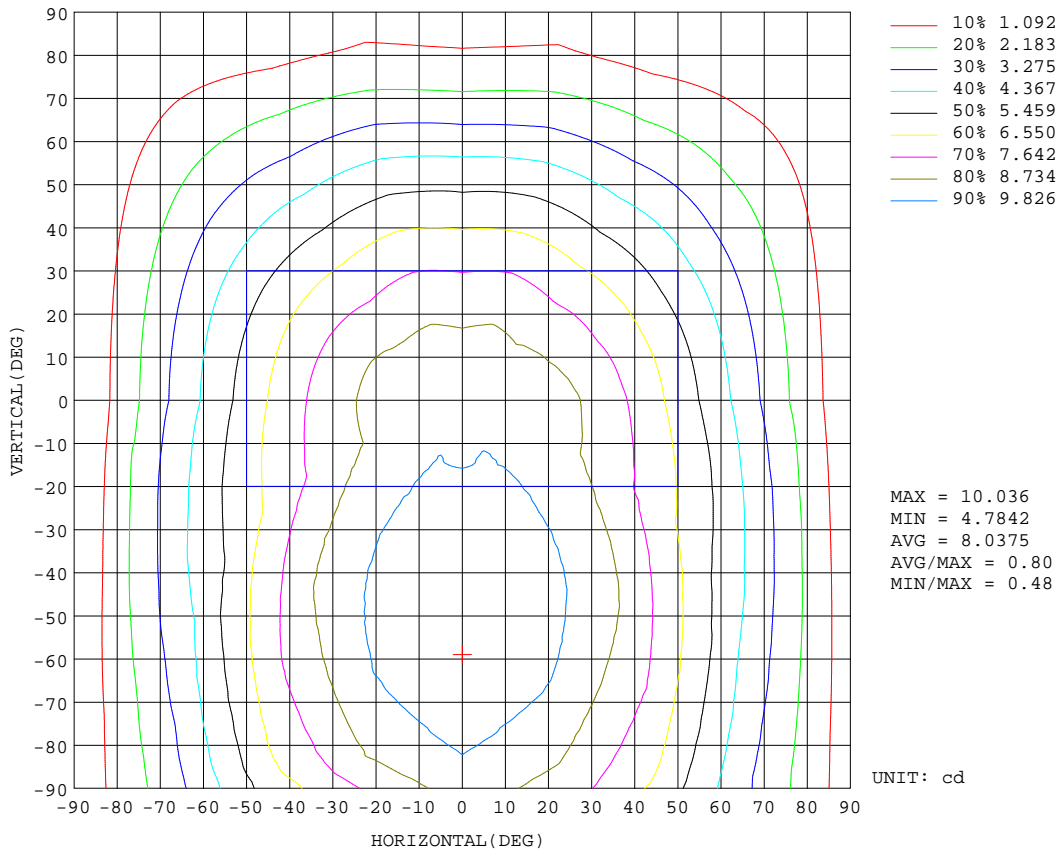
REFLECTANCE										
Ceiling	0.8	0.8	0.8	0.7	0.7	0.7	0.5	0.5	0.5	0
Walls	0.7	0.5	0.3	0.7	0.5	0.3	0.7	0.5	0.3	0
Working plane	0.2	0.2	0.2	0.2	0.2	0.2	0.2	0.2	0.2	0
ROOM INDEX	UTILIZATION FACTORS(PERCENT) $k(RI) \times RCR = 5$									
k = 0.60	46	34	26	45	33	26	43	32	26	19
0.80	55	42	34	53	41	34	50	40	33	24
1.00	63	50	41	61	49	41	57	49	39	30
1.25	70	57	48	67	56	47	63	53	45	35
1.50	75	63	54	72	61	53	67	57	50	39
2.00	82	71	63	79	69	61	73	64	58	45
2.50	87	77	68	83	74	66	76	69	63	49
3.00	91	81	74	87	78	71	79	73	67	52
4.00	96	87	81	91	84	78	83	78	73	57
5.00	99	92	86	94	88	82	86	81	76	60
ROOM INDEX	UF(total)									Direct
According to DIN EN 13032-2 2004			Suspended				SHRNOM = 1.25			

C Range: 0 - 360DEG  
 C Interval: 90.0DEG  
 Test Speed: HIGH  
 Temperature:25.3DEG  
 Test Date:2021-10-18

$\gamma$  Range: 0 - 180DEG  
 $\gamma$  Interval: 1.0DEG  
 Test System:EVERFINE GO-2000B\_V1 SYSTEM V2.0.351  
 Humidity:65.0%  
 Test Distance:9.660m [K=1.0000]  
 Remarks:

ISOCANDELA DIAGRAM

Test:U:24.00V I:0.3776A P:9.060W PF:0 Lamp Flux:49.4768x1 lm		
NAME: LUC-S-RGB	TYPE:LED Strip	WEIGHT:
SPEC.: 9W	DIM.: 1000*10*9(MM)	SERIAL No.: 001
MFR.: Flexfire LEDs, Inc.	SUR.:0..01*1.0*0.002	Shielding Angle:120



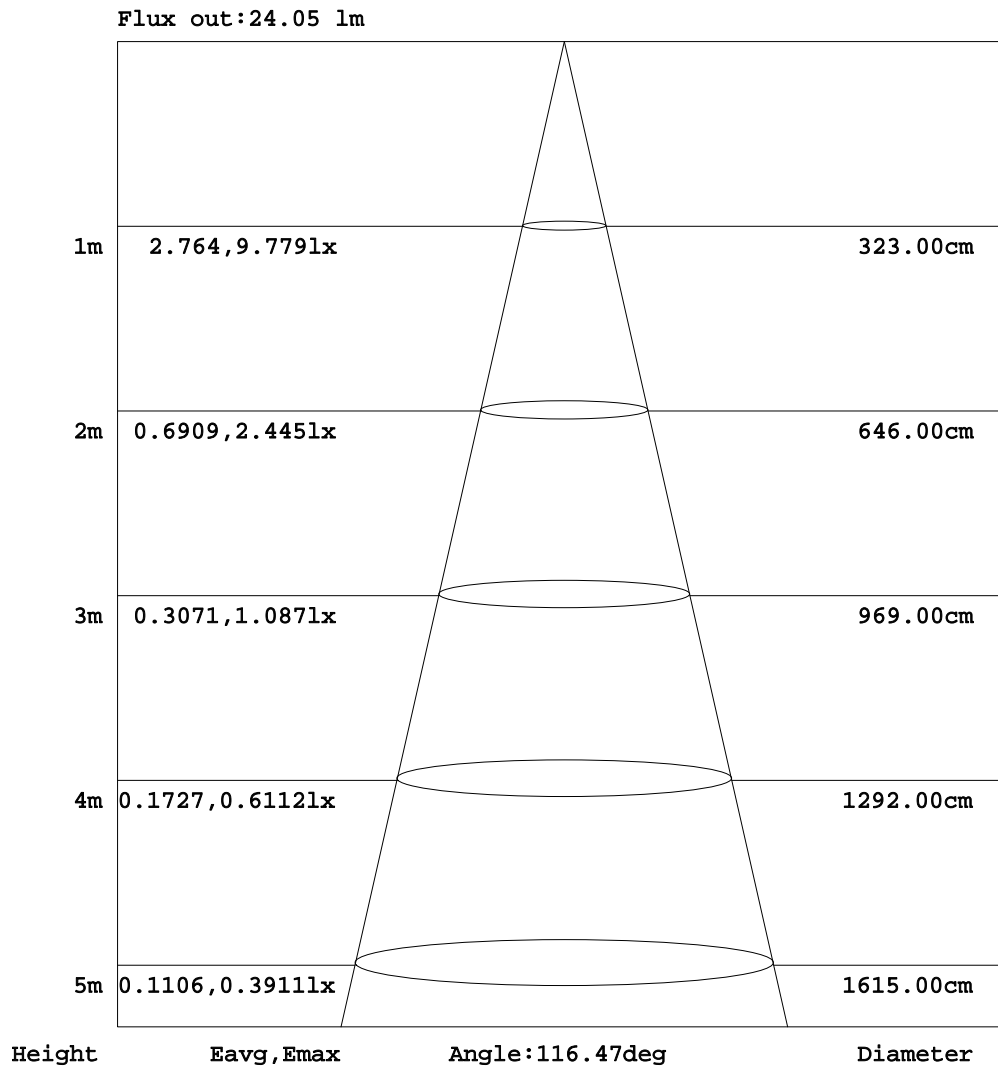
C Range: 0 - 360DEG  
 C Interval: 90.0DEG  
 Test Speed: HIGH  
 Temperature:25.3DEG  
 Test Date:2021-10-18

γ Range: 0 - 180DEG  
 γ Interval: 1.0DEG  
 Test System:EVERFINE GO-2000B\_V1 SYSTEM V2.0.351  
 Humidity:65.0%  
 Test Distance:9.660m [K=1.0000]  
 Remarks:



AAI Figure

Test:U:24.00V I:0.3776A P:9.060W PF:0 Lamp Flux:49.4768x1 lm		
NAME: LUC-S-RGB	TYPE:LED Strip	WEIGHT:
SPEC.: 9W	DIM.: 1000*10*9(MM)	SERIAL No.: 001
MFR.: Flexfire LEDs, Inc.	SUR.:0..01*1.0*0.002	Shielding Angle:120



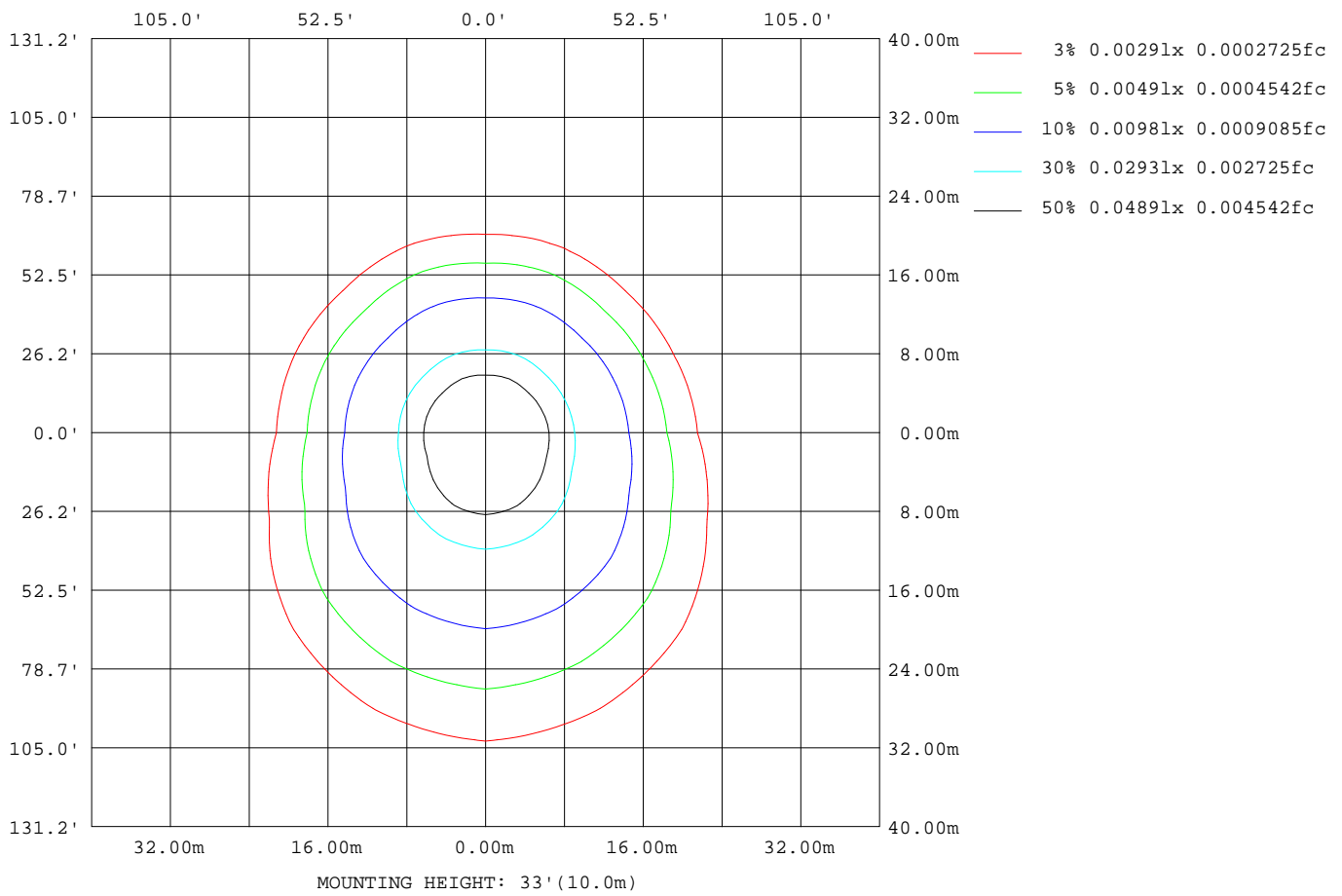
Note:The Curves indicate the illuminated area and the average illumination when the luminaire is at different distance.

C Range: 0 - 360DEG  
 C Interval: 90.0DEG  
 Test Speed: HIGH  
 Temperature:25.3DEG  
 Test Date:2021-10-18

γ Range: 0 - 180DEG  
 γ Interval: 1.0DEG  
 Test System:EVERFINE GO-2000B\_V1 SYSTEM V2.0.351  
 Humidity:65.0%  
 Test Distance:9.660m [K=1.0000]  
 Remarks:

ISOLUX DIAGRAM

Test:U:24.00V I:0.3776A P:9.060W PF:0 Lamp Flux:49.4768x1 lm		
NAME: LUC-S-RGB	TYPE:LED Strip	WEIGHT:
SPEC.: 9W	DIM.: 1000*10*9(MM)	SERIAL No.: 001
MFR.: Flexfire LEDs, Inc.	SUR.:0..01*1.0*0.002	Shielding Angle:120



C Range: 0 - 360DEG  
 C Interval: 90.0DEG  
 Test Speed: HIGH  
 Temperature:25.3DEG  
 Test Date:2021-10-18

γ Range: 0 - 180DEG  
 γ Interval: 1.0DEG  
 Test System:EVERFINE GO-2000B\_V1 SYSTEM V2.0.351  
 Humidity:65.0%  
 Test Distance:9.660m [K=1.0000]  
 Remarks:

## LED Avg.L Report

Test:U:24.00V I:0.3776A P:9.060W PF:0 Lamp Flux:49.4768x1 lm		
NAME: LUC-S-RGB	TYPE:LED Strip	WEIGHT:
SPEC.: 9W	DIM.: 1000*10*9(MM)	SERIAL No.: 001
MFR.: Flexfire LEDs, Inc.	SUR.:0..01*1.0*0.002	Shielding Angle:120

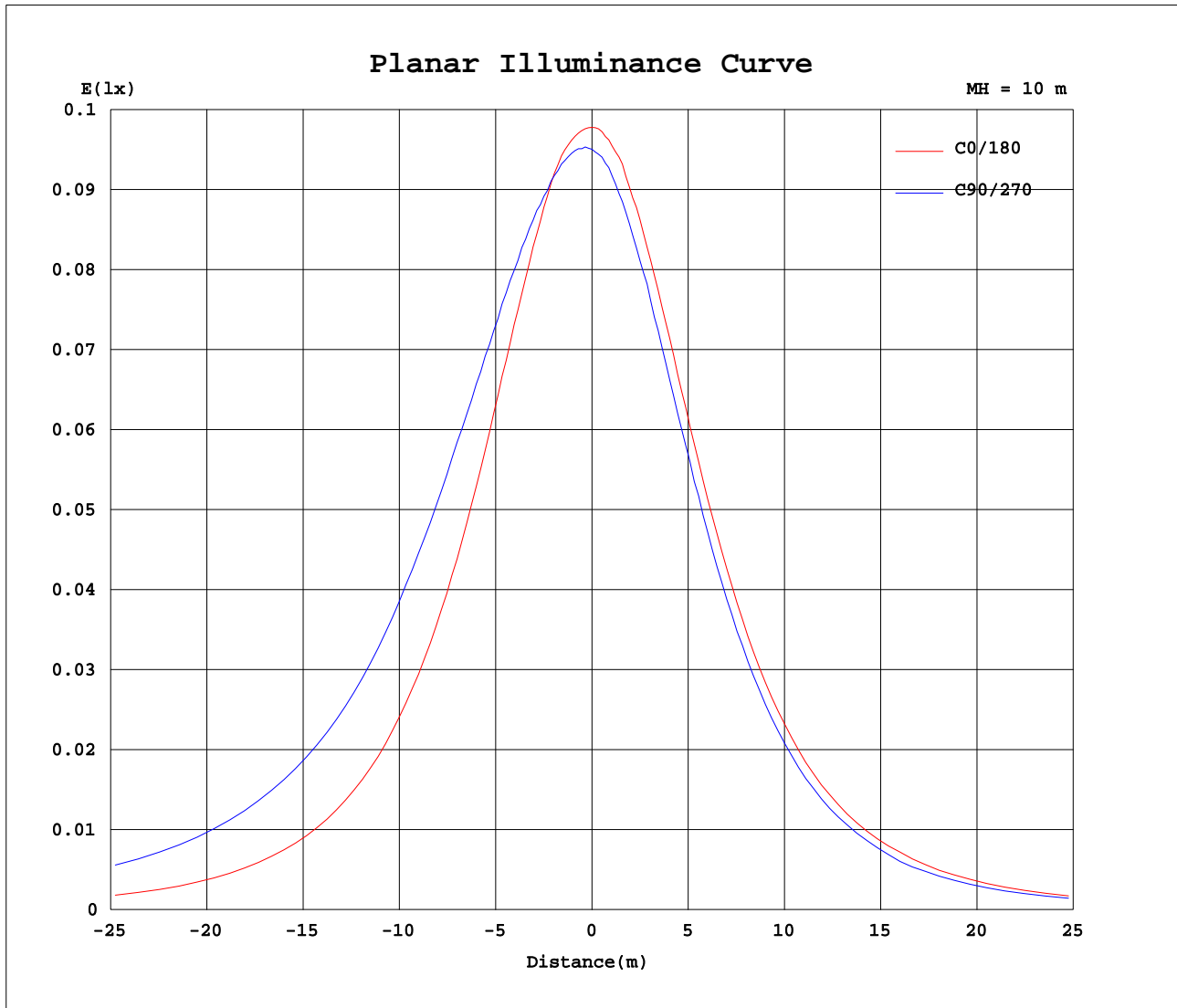
AvgL	cd/m2
L_0~180(65)av	445975
L_0~180(75)av	426805
L_0~180(85)av	428292
L_90~270(65)av	827590
L_90~270(75)av	1173344
L_90~270(85)av	3066134
L_45(65)av	675009
L_45(75)av	894364
L_45(85)av	2098687

Standard: GB/T 29293-2012

C Range: 0 - 360DEG  
C Interval: 90.0DEG  
Test Speed: HIGH  
Temperature:25.3DEG  
Test Date:2021-10-18

$\gamma$  Range: 0 - 180DEG  
 $\gamma$  Interval: 1.0DEG  
Test System:EVERFINE GO-2000B\_V1 SYSTEM V2.0.351  
Humidity:65.0%  
Test Distance:9.660m [K=1.0000]  
Remarks:

Planar Illuminance Curve



C Range: 0 - 360DEG  
 C Interval: 90.0DEG  
 Test Speed: HIGH  
 Temperature: 25.3DEG  
 Test Date: 2021-10-18

γ Range: 0 - 180DEG  
 γ Interval: 1.0DEG  
 Test System: EVERFINE GO-2000B\_V1 SYSTEM V2.0.351  
 Humidity: 65.0%  
 Test Distance: 9.660m [K=1.0000]  
 Remarks:

LUMINOUS DISTRIBUTION INTENSITY DATA

Test:U:24.00V I:0.3776A P:9.060W PF:0 Lamp Flux:49.4768x1 lm		
NAME: LUC-S-RGB	TYPE:LED Strip	WEIGHT:
SPEC.: 9W	DIM.: 1000*10*9(MM)	SERIAL No.: 001
MFR.: Flexfire LEDs, Inc.	SUR.:0..01*1.0*0.002	Shielding Angle:120

Table--1

UNIT: cd

C( DEG) γ (DEG)	0	22.5	45	67.5	90	112.5	135	157.5	180	202.5	225	247.5	270	292.5	315	337.5			
0	9.61	9.61	9.61	9.61	9.61	9.61	9.61	9.61	9.61	9.61	9.61	9.61	9.61	9.61	9.61	9.61			
5	9.61	9.60	9.70	9.69	9.71	9.69	9.64	9.60	9.57	9.57	9.48	9.46	9.49	9.49	9.55	9.61			
10	9.58	9.51	9.70	9.70	9.78	9.69	9.64	9.52	9.43	9.43	9.28	9.22	9.23	9.28	9.34	9.55			
15	9.39	9.34	9.70	9.81	9.89	9.80	9.64	9.35	9.22	9.16	8.99	8.95	8.94	8.96	9.07	9.31			
20	9.12	9.15	9.70	9.93	10.09	9.90	9.64	9.12	8.93	8.80	8.64	8.60	8.57	8.63	8.69	9.01			
25	8.81	8.88	9.66	10.1	10.3	9.99	9.58	8.84	8.55	8.41	8.24	8.20	8.15	8.21	8.29	8.60			
30	8.35	8.61	9.60	10.2	10.5	10.2	9.52	8.52	8.12	7.95	7.77	7.74	7.68	7.72	7.86	8.14			
35	7.84	8.26	9.52	10.3	10.7	10.3	9.38	8.14	7.63	7.44	7.27	7.26	7.14	7.23	7.27	7.63			
40	7.29	7.86	9.45	10.4	10.9	10.3	9.29	7.69	7.04	6.87	6.69	6.69	6.57	6.64	6.67	7.03			
45	6.70	7.44	9.32	10.4	11.0	10.4	9.15	7.23	6.46	6.21	6.05	6.07	5.96	6.00	6.06	6.37			
50	6.03	6.97	9.14	10.3	11.0	10.3	8.98	6.77	5.78	5.60	5.38	5.42	5.28	5.34	5.35	5.69			
55	5.35	6.49	8.90	10.2	11.0	10.2	8.75	6.26	5.12	4.94	4.71	4.77	4.64	4.69	4.66	5.02			
60	4.64	6.03	8.59	10.0	11.0	9.99	8.41	5.78	4.43	4.25	3.99	4.08	3.88	3.99	3.92	4.26			
65	3.85	5.52	8.27	9.84	10.8	9.81	8.09	5.29	3.69	3.54	3.27	3.34	3.15	3.27	3.18	3.48			
70	3.08	4.99	7.92	9.61	10.6	9.54	7.69	4.78	2.92	2.81	2.57	2.61	2.46	2.56	2.44	2.66			
75	2.30	4.50	7.53	9.31	10.4	9.24	7.31	4.23	2.12	2.03	1.95	1.83	1.76	1.88	1.74	1.91			
80	1.57	3.99	7.13	9.01	10.09	8.92	6.89	3.69	1.36	1.32	1.19	1.31	1.20	1.30	1.08	1.19			
85	0.91	3.52	6.78	8.66	9.74	8.46	6.54	3.21	0.58	0.69	0.69	0.98	0.95	0.98	0.63	0.60			
90	0.48	3.19	6.32	8.30	9.37	7.71	5.98	2.83	0.25	0.33	0.46	0.79	0.71	0.77	0.43	0.31			
95	0.39	2.89	6.03	7.92	9.00	6.68	4.75	2.15	0.21	0.11	0.09	0.39	0.28	0.32	0.14	0.09			
100	0.37	2.67	5.71	7.55	8.56	6.88	5.06	2.11	0.19	0.07	0.05	0.12	0.08	0.15	0.02	0.08			
105	0.36	2.50	5.41	7.15	8.14	6.50	4.86	2.05	0.16	0.06	0.05	0.09	0.08	0.11	0.02	0.08			
110	0.33	2.35	5.10	6.71	7.66	6.27	4.45	1.98	0.12	0.06	0.05	0.08	0.08	0.11	0.02	0.08			
115	0.31	2.19	4.75	6.25	7.14	5.82	4.15	1.58	0.12	0.04	0.05	0.08	0.08	0.11	0.02	0.08			
120	0.31	2.10	4.42	5.78	6.62	5.34	3.32	1.35	0.12	0.04	0.05	0.08	0.08	0.11	0.02	0.08			
125	0.28	1.96	4.07	5.25	6.05	4.88	2.82	1.17	0.12	0.04	0.05	0.08	0.08	0.09	0.02	0.08			
130	0.25	1.74	3.70	4.83	5.48	4.19	2.40	1.00	0.12	0.04	0.05	0.06	0.08	0.09	0.02	0.08			
135	0.25	1.53	3.31	4.29	4.95	3.35	2.17	0.89	0.12	0.04	0.05	0.08	0.08	0.09	0.02	0.09			
140	0.24	1.35	2.96	3.80	4.33	2.67	1.86	0.72	0.12	0.04	0.05	0.08	0.08	0.09	0.02	0.11			
145	0.22	1.15	2.56	3.24	3.78	2.15	1.52	0.68	0.12	0.04	0.05	0.08	0.08	0.09	0.09	0.11			
150	0.21	0.97	2.13	2.72	3.20	1.66	1.23	0.65	0.12	0.04	0.05	0.08	0.08	0.09	0.09	0.11			
155	0.19	0.82	1.72	2.16	2.61	1.19	1.02	0.58	0.12	0.04	0.05	0.08	0.08	0.09	0.09	0.11			
160	0.18	0.72	1.39	1.63	2.00	0.79	0.91	0.57	0.12	0.04	0.05	0.08	0.08	0.09	0.09	0.11			
165	0.16	0.60	1.08	1.18	1.46	0.51	0.80	0.54	0.12	0.04	0.05	0.08	0.08	0.09	0.09	0.11			
170	0.13	0.43	0.84	0.81	0.80	0.44	0.72	0.40	0.12	0.04	0.05	0.08	0.08	0.09	0.09	0.06			
175	0.13	0.19	0.52	0.48	0.38	0.36	0.51	0.20	0.12	0.04	0.05	0.08	0.08	0.09	0.09	0.06			
180	0.12	0.10	0.14	0.14	0.11	0.09	0.09	0.15	0.12	0.04	0.05	0.08	0.08	0.09	0.09	0.08			

C Range: 0 - 360DEG  
 C Interval: 90.0DEG  
 Test Speed: HIGH  
 Temperature:25.3DEG  
 Test Date:2021-10-18

γ Range: 0 - 180DEG  
 γ Interval: 1.0DEG  
 Test System:EVERFINE GO-2000B\_V1 SYSTEM V2.0.351  
 Humidity:65.0%  
 Test Distance:9.660m [K=1.0000]  
 Remarks: