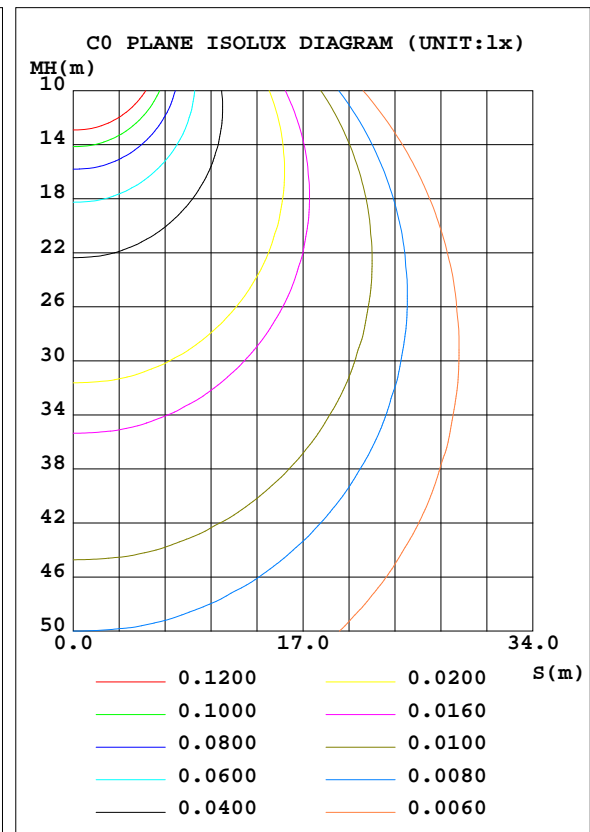
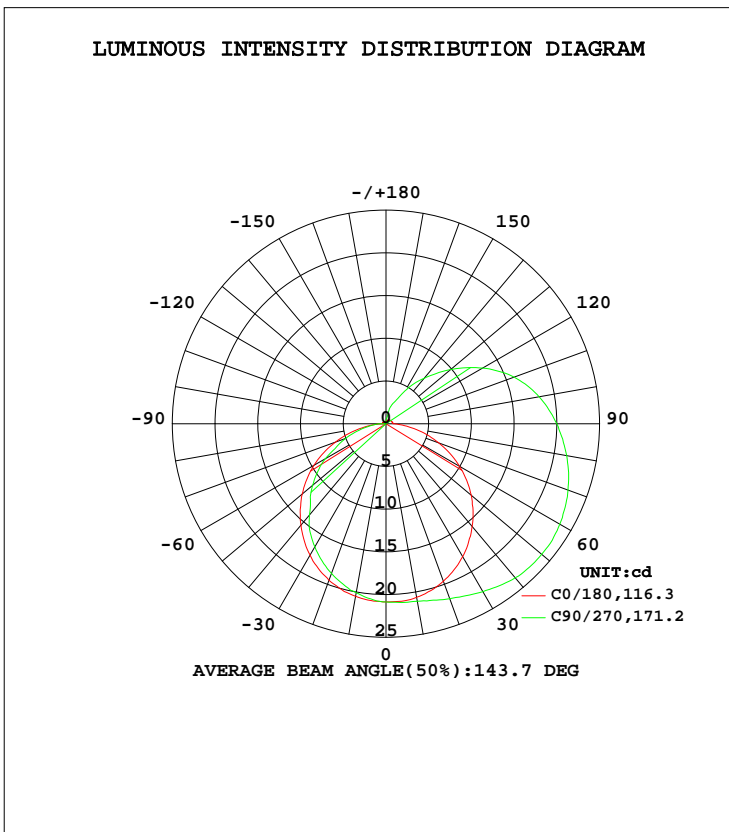


LUMINAIRE PHOTOMETRIC TEST REPORT

Test:U:24.00V I:0.3771A P:9.050W PF:0 Lamp Flux:105.249x1 lm		
NAME: LUC-S-RGB	TYPE:LED Strip	WEIGHT:
SPEC.: 9W	DIM.: 1000*10*9(MM)	SERIAL No.: 001
MFR.: Flexfire LEDs, Inc.	SUR.:0..01*1.0*0.002	Shielding Angle:120

DATA OF LAMP		PHOTOMETRIC DATA Eff: 11.63 lm/W			
MODEL		I _{max} (cd)	23.78	S/MH(C0/180)	1.27
NOMINAL POWER(W)		LOR(%)	100.0	S/MH(C90/270)	1.20
RATED VOLTAGE(V)		TOTAL FLUX(lm)	105.25	η UP, DN(C0-180)	21.5,50.0
NOMINAL FLUX(lm)	105.249	CIE CLASS	SEMI-D.	η UP, DN(C180-360)	0.6,27.9
LAMPS INSIDE	1	η up(%)	22.0	CIBSE SHR NOM	1.50
TEST VOLTAGE(V)		η down(%)	78.0	CIBSE SHR MAX	1.55



C Range: 0 - 360DEG
 C Interval: 90.0DEG
 Test Speed: HIGH
 Temperature:25.3DEG
 Test Date:2021-10-18

γ Range: 0 - 180DEG
 γ Interval: 1.0DEG
 Test System:EVERFINE GO-2000B_V1 SYSTEM V2.0.351
 Humidity:65.0%
 Test Distance:9.660m [K=1.0000]
 Remarks:

ZONAL FLUX DIAGRAM

ZONAL FLUX DIAGRAM:

γ	C0	C45	C90	C135	C180	C225	C270	C315	γ	Φ zone	Φ total	%lum,lamp
10	20.63	20.33	21.10	20.91	20.50	20.58	20.06	20.27	0- 10	1.978	1.978	1.88,1.88
20	19.62	19.74	21.80	20.73	19.50	19.58	18.64	18.97	10- 20	5.720	7.698	7.31,7.31
30	17.95	19.27	22.69	20.36	17.76	17.78	16.64	17.04	20- 30	8.888	16.59	15.8,15.8
40	15.69	18.90	23.53	19.87	15.50	15.25	13.93	14.45	30- 40	11.21	27.80	26.4,26.4
50	13.03	18.47	23.78	19.21	12.79	12.21	11.21	11.61	40- 50	12.49	40.29	38.3,38.3
60	9.945	17.44	23.49	17.92	9.732	8.974	8.214	8.482	50- 60	12.61	52.90	50.3,50.3
70	6.558	16.03	22.67	16.28	6.313	5.658	5.017	5.313	60- 70	11.60	64.50	61.3,61.3
80	3.328	14.61	21.47	14.57	2.926	2.562	2.382	2.352	70- 80	9.795	74.30	70.6,70.6
90	0.9833	13.28	19.99	12.96	0.3627	0.5304	0.7245	0.4579	80- 90	7.750	82.05	78,78
100	0.8074	12.11	18.20	10.53	0.3488	0.1095	0.1481	0.1333	90-100	6.062	88.11	83.7,83.7
110	0.6966	10.81	15.97	8.930	0.3800	0.1095	0.1481	0.1481	100-110	5.310	93.42	88.8,88.8
120	0.6966	9.308	13.06	6.845	0.3641	0.1095	0.1481	0.1629	110-120	4.328	97.75	92.9,92.9
130	0.6493	7.760	9.881	5.125	0.3641	0.1566	0.1481	0.1777	120-130	3.161	100.9	95.9,95.9
140	0.5703	6.212	6.963	3.763	0.3325	0.2346	0.1629	0.2371	130-140	2.108	103.0	97.9,97.9
150	0.5066	4.444	4.460	2.444	0.3163	0.2346	0.1629	0.2369	140-150	1.270	104.3	99.1,99.1
160	0.4116	2.895	2.607	1.940	0.2691	0.2033	0.1629	0.2073	150-160	0.6448	104.9	99.7,99.7
170	0.3168	1.784	0.8162	1.481	0.2691	0.1721	0.1629	0.2073	160-170	0.2664	105.2	100,100
180	0.2216	0.2815	0.1925	0.3406	0.2691	0.2346	0.1925	0.2517	170-180	0.0523	105.2	100,100
DEG	LUMINOUS INTENSITY:cd									UNIT:lm		

Conical surface Flux(90deg): 33.955 lm

%lum = 32.3%

%lamp = 32.3%

Conical surface Flux(120deg): 52.898 lm

%lum = 50.3%

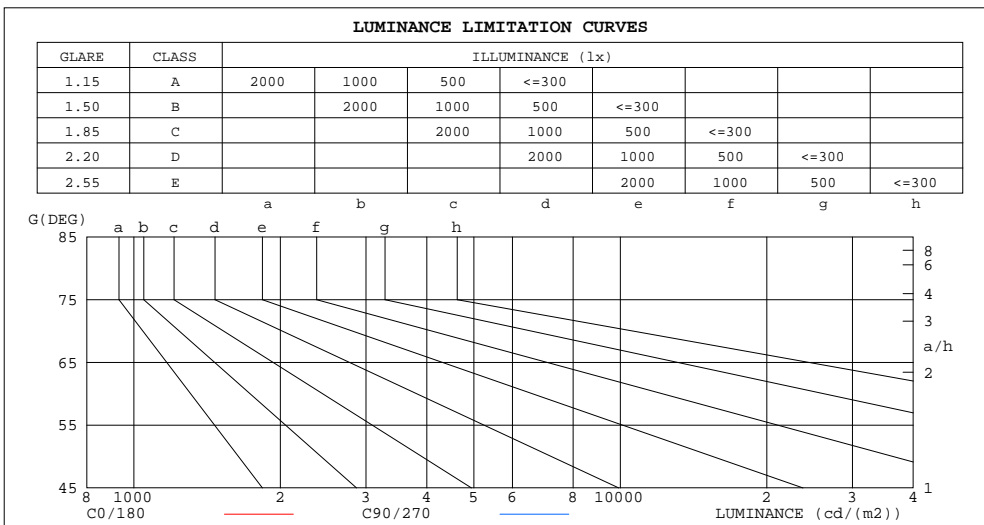
%lamp = 50.3%

C Range: 0 - 360DEG
 C Interval: 90.0DEG
 Test Speed: HIGH
 Temperature:25.3DEG
 Test Date:2021-10-18

γ Range: 0 - 180DEG
 γ Interval: 1.0DEG
 Test System:EVERFINE GO-2000B_V1 SYSTEM V2.0.351
 Humidity:65.0%
 Test Distance:9.660m [K=1.0000]
 Remarks:

LUMINANCE LIMITATION CURVES

Test:U:24.00V I:0.3771A P:9.050W PF:0 Lamp Flux:105.249x1 lm		
NAME: LUC-S-RGB	TYPE:LED Strip	WEIGHT:
SPEC.: 9W	DIM.: 1000*10*9(MM)	SERIAL No.: 001
MFR.: Flexfire LEDs, Inc.	SUR.:0..01*1.0*0.002	Shielding Angle:120



LUMINANCE cd/(m2)		
G(DEG)	C0/180	C90/270
85	1055837	12213647
80	919175	6340006
75	918878	4382699
70	919499	3398656
65	939980	2806137
60	953876	2408282
55	963883	2123158
50	972316	1896886
45	977257	1722160

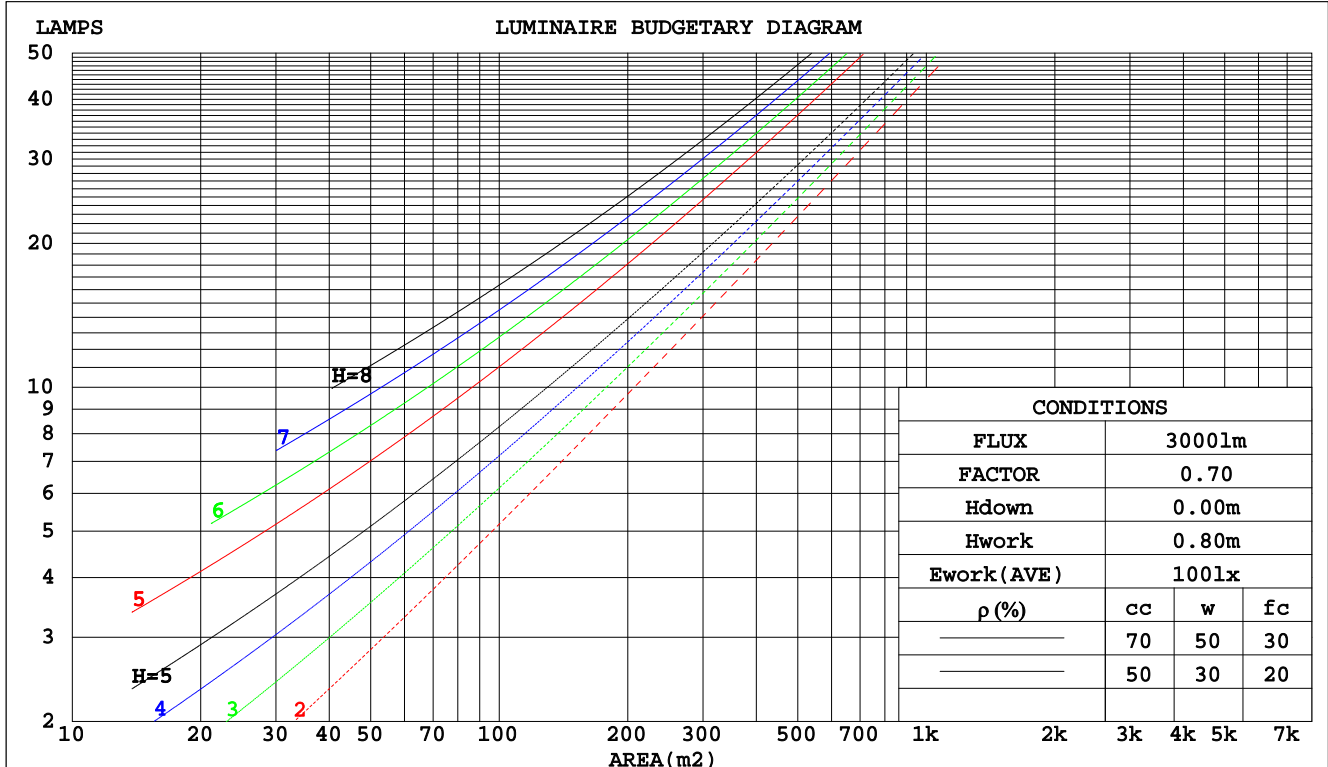
C Range: 0 - 360DEG
 C Interval: 90.0DEG
 Test Speed: HIGH
 Temperature:25.3DEG
 Test Date:2021-10-18

γ Range: 0 - 180DEG
 γ Interval: 1.0DEG
 Test System:EVERFINE GO-2000B_V1 SYSTEM V2.0.351
 Humidity:65.0%
 Test Distance:9.660m [K=1.0000]
 Remarks:

CU AND LUMINAIRE BUDGETARY ESTIMATE DIAGRAM

Test:U:24.00V I:0.3771A P:9.050W PF:0 Lamp Flux:105.249x1 lm		
NAME: LUC-S-RGB	TYPE:LED Strip	WEIGHT:
SPEC.: 9W	DIM.: 1000*10*9(MM)	SERIAL No.: 001
MFR.: Flexfire LEDs, Inc.	SUR.:0..01*1.0*0.002	Shielding Angle:120

pcc	80%			70%			50%			30%			10%			0
	50%	30%	10%	50%	30%	10%	50%	30%	10%	50%	30%	10%	50%	30%	10%	0
pw																0
pfc	20%			20%			20%			20%			20%			0
RCR	RCR:Room Cavity Ratio Coefficients of Utilization(CU)															
0.0	1.14	1.14	1.14	1.09	1.09	1.09	.99	.99	.99	.90	.90	.90	.82	.82	.82	.78
1.0	.95	.89	.85	.90	.85	.81	.82	.78	.74	.74	.71	.68	.67	.65	.62	.59
2.0	.81	.73	.66	.77	.70	.64	.70	.64	.59	.63	.59	.55	.57	.53	.50	.47
3.0	.70	.61	.54	.67	.59	.52	.61	.54	.48	.55	.49	.45	.50	.45	.41	.38
4.0	.61	.52	.45	.59	.50	.43	.53	.46	.40	.48	.42	.37	.44	.39	.35	.32
5.0	.54	.45	.38	.52	.43	.37	.47	.40	.34	.43	.37	.32	.39	.34	.30	.27
6.0	.49	.39	.33	.47	.38	.32	.43	.35	.30	.39	.32	.28	.35	.30	.26	.23
7.0	.44	.35	.29	.42	.34	.28	.38	.31	.26	.35	.29	.24	.32	.27	.23	.20
8.0	.40	.31	.25	.38	.30	.24	.35	.28	.23	.32	.26	.22	.29	.24	.20	.18
9.0	.36	.28	.22	.35	.27	.22	.32	.25	.21	.30	.24	.19	.27	.22	.18	.16
10.0	.33	.25	.20	.32	.25	.20	.30	.23	.18	.27	.21	.17	.25	.20	.16	.14



C Range: 0 - 360DEG
 C Interval: 90.0DEG
 Test Speed: HIGH
 Temperature: 25.3DEG
 Test Date: 2021-10-18

γ Range: 0 - 180DEG
 γ Interval: 1.0DEG
 Test System: EVERFINE GO-2000B_V1 SYSTEM V2.0.351
 Humidity: 65.0%
 Test Distance: 9.660m [K=1.0000]
 Remarks:

WEC AND CCEC

Test:U:24.00V I:0.3771A P:9.050W PF:0 Lamp Flux:105.249x1 lm		
NAME: LUC-S-RGB	TYPE:LED Strip	WEIGHT:
SPEC.: 9W	DIM.: 1000*10*9(MM)	SERIAL No.: 001
MFR.: Flexfire LEDs, Inc.	SUR.:0..01*1.0*0.002	Shielding Angle:120

ρcc	80%			70%			50%			30%			10%			0
ρw	50%	30%	10%	50%	30%	10%	50%	30%	10%	50%	30%	10%	50%	30%	10%	0
ρfc	20%			20%			20%			20%			20%			0
RCR	RCR:Room Cavity Ratio						Wall Exitance Coefficients(WEC)									
0.0																
1.0	.384	.218	.069	.370	.211	.067	.344	.197	.063	.320	.185	.059	.298	.173	.056	
2.0	.332	.182	.056	.320	.176	.054	.296	.165	.051	.274	.154	.048	.254	.144	.045	
3.0	.295	.157	.047	.284	.152	.046	.262	.142	.043	.242	.133	.041	.224	.124	.038	
4.0	.266	.138	.041	.255	.134	.039	.236	.125	.037	.218	.117	.035	.201	.109	.033	
5.0	.241	.123	.036	.232	.119	.035	.214	.112	.033	.198	.104	.031	.182	.097	.029	
6.0	.221	.111	.032	.213	.107	.031	.196	.101	.029	.181	.094	.028	.167	.088	.026	
7.0	.204	.101	.029	.196	.098	.028	.181	.092	.026	.167	.086	.025	.154	.080	.024	
8.0	.189	.092	.026	.182	.090	.025	.168	.084	.024	.155	.079	.023	.143	.074	.021	
9.0	.176	.085	.024	.170	.083	.023	.157	.078	.022	.145	.073	.021	.134	.068	.020	
10.0	.165	.079	.022	.159	.077	.021	.147	.072	.020	.136	.068	.019	.126	.063	.018	

ρcc	80%			70%			50%			30%			10%			0
ρw	50%	30%	10%	50%	30%	10%	50%	30%	10%	50%	30%	10%	50%	30%	10%	0
ρfc	20%			20%			20%			20%			20%			0
RCR	RCR:Room Cavity Ratio						Ceiling Cavity Exitance Coefficients(CCEC)									
0.0	.358	.358	.358	.306	.306	.306	.209	.209	.209	.120	.120	.120	.038	.038	.038	
1.0	.355	.325	.298	.304	.279	.256	.208	.192	.177	.120	.111	.103	.038	.036	.033	
2.0	.348	.302	.264	.298	.260	.228	.204	.180	.159	.118	.105	.093	.038	.034	.030	
3.0	.341	.286	.242	.292	.247	.210	.201	.171	.147	.116	.100	.087	.037	.032	.028	
4.0	.333	.274	.228	.286	.236	.198	.197	.165	.139	.114	.096	.083	.037	.031	.027	
5.0	.325	.264	.218	.279	.228	.190	.193	.159	.134	.112	.094	.080	.036	.031	.026	
6.0	.318	.256	.211	.273	.222	.184	.189	.155	.130	.109	.091	.077	.035	.030	.026	
7.0	.311	.249	.206	.268	.216	.180	.185	.152	.127	.107	.089	.076	.035	.029	.025	
8.0	.304	.244	.202	.262	.212	.176	.181	.149	.125	.105	.088	.075	.034	.029	.025	
9.0	.298	.239	.199	.257	.208	.174	.178	.146	.123	.104	.086	.074	.034	.028	.024	
10.0	.292	.235	.197	.252	.204	.172	.175	.144	.122	.102	.085	.073	.033	.028	.024	

C Range: 0 - 360DEG
 C Interval: 90.0DEG
 Test Speed: HIGH
 Temperature:25.3DEG
 Test Date:2021-10-18

γ Range: 0 - 180DEG
 γ Interval: 1.0DEG
 Test System:EVERFINE GO-2000B_V1 SYSTEM V2.0.351
 Humidity:65.0%
 Test Distance:9.660m [K=1.0000]
 Remarks:

UGR(Unified Glare Rating) Table

Test:U:24.00V I:0.3771A P:9.050W PF:0 Lamp Flux:105.249x1 lm		
NAME: LUC-S-RGB	TYPE:LED Strip	WEIGHT:
SPEC.: 9W	DIM.: 1000*10*9(MM)	SERIAL No.: 001
MFR.: Flexfire LEDs, Inc.	SUR.:0..01*1.0*0.002	Shielding Angle:120

ceiling/cavity	0.7	0.7	0.5	0.5	0.3	0.7	0.7	0.5	0.5	0.3
walls	0.5	0.3	0.5	0.3	0.3	0.5	0.3	0.5	0.3	0.3
working plane	0.2	0.2	0.2	0.2	0.2	0.2	0.2	0.2	0.2	0.2
Room dimensions	Viewed crosswise					Viewed endwise				
x = 2H y = 2H	35.8	37.1	36.4	37.7	38.3	39.3	40.6	39.9	41.2	41.8
3H	37.6	38.8	38.2	39.4	40.1	42.6	43.8	43.2	44.4	45.1
4H	38.4	39.6	39.0	40.2	40.9	44.5	45.6	45.1	46.2	46.9
6H	39.1	40.2	39.7	40.8	41.6	46.5	47.6	47.1	48.2	48.9
8H	39.4	40.4	40.0	41.1	41.8	47.6	48.7	48.3	49.3	50.1
12H	39.6	40.6	40.3	41.3	42.0	48.9	49.9	49.6	50.6	51.3
4H 2H	37.5	38.7	38.1	39.3	40.0	39.8	41.0	40.5	41.6	42.3
3H	39.6	40.6	40.2	41.2	42.0	43.3	44.4	44.0	45.0	45.8
4H	40.6	41.5	41.3	42.2	43.0	45.4	46.3	46.0	47.0	47.8
6H	41.5	42.3	42.2	43.0	43.9	47.6	48.5	48.3	49.2	50.0
8H	41.9	42.7	42.6	43.4	44.2	48.9	49.7	49.6	50.4	51.2
12H	42.2	42.9	42.9	43.7	44.5	50.3	51.1	51.1	51.8	52.6
8H 4H	42.1	42.9	42.9	43.6	44.5	45.7	46.5	46.4	47.2	48.0
6H	43.5	44.2	44.2	44.9	45.8	48.3	48.9	49.0	49.7	50.5
8H	44.1	44.7	44.9	45.5	46.4	49.7	50.3	50.5	51.1	52.0
12H	44.7	45.2	45.5	46.0	46.9	51.4	52.0	52.2	52.7	53.6
12H 4H	42.7	43.4	43.4	44.1	45.0	45.7	46.5	46.5	47.2	48.0
6H	44.3	44.9	45.1	45.7	46.5	48.4	49.0	49.1	49.7	50.6
8H	45.2	45.7	45.9	46.4	47.4	50.0	50.5	50.7	51.3	52.2
Variations with the observer position at spacings:										
S = 1.0H	+ 0.1 / - 0.1					+ 0.1 / - 0.1				
1.5H	+ 0.2 / - 0.3					+ 0.2 / - 0.2				
2.0H	+ 0.3 / - 0.4					+ 0.2 / - 0.3				

CIE Pub.117 Corrected 105.2 lm Total Lamp Luminous Flux. (8log(F/F0) = -7.8)

C Range: 0 - 360DEG
 C Interval: 90.0DEG
 Test Speed: HIGH
 Temperature:25.3DEG
 Test Date:2021-10-18

γ Range: 0 - 180DEG
 γ Interval: 1.0DEG
 Test System:EVERFINE GO-2000B_V1 SYSTEM V2.0.351
 Humidity:65.0%
 Test Distance:9.660m [K=1.0000]
 Remarks:

UTILIZATION FACTORS TABLE

Test:U:24.00V I:0.3771A P:9.050W PF:0 Lamp Flux:105.249x1 lm		
NAME: LUC-S-RGB	TYPE:LED Strip	WEIGHT:
SPEC.: 9W	DIM.: 1000*10*9(MM)	SERIAL No.: 001
MFR.: Flexfire LEDs, Inc.	SUR.:0..01*1.0*0.002	Shielding Angle:120

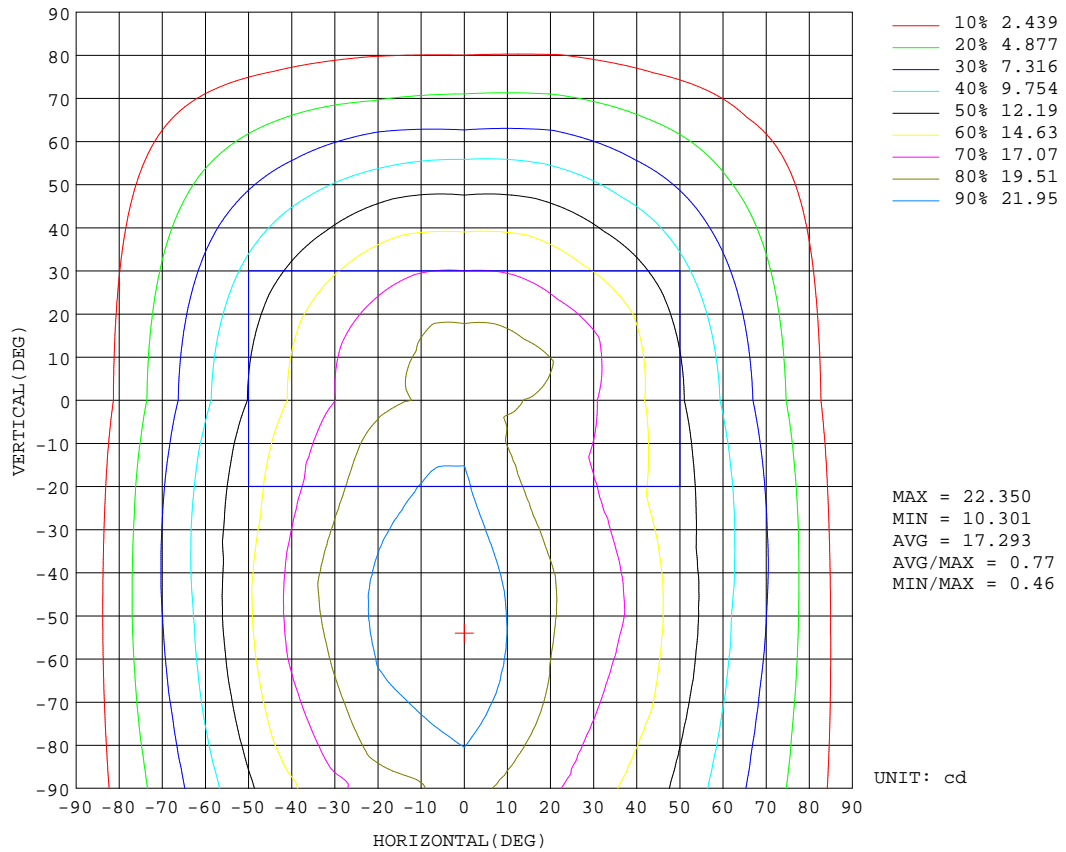
REFLECTANCE										
Ceiling	0.8	0.8	0.8	0.7	0.7	0.7	0.5	0.5	0.5	0
Walls	0.7	0.5	0.3	0.7	0.5	0.3	0.7	0.5	0.3	0
Working plane	0.2	0.2	0.2	0.2	0.2	0.2	0.2	0.2	0.2	0
ROOM INDEX	UTILIZATION FACTORS(PERCENT) $k(RI) \times RCR = 5$									
k = 0.60	46	34	27	45	33	26	43	32	26	19
0.80	55	42	34	54	42	34	51	40	33	25
1.00	63	50	42	61	49	41	57	49	40	30
1.25	70	57	49	68	56	48	63	53	46	36
1.50	75	63	54	72	61	53	67	58	51	40
2.00	83	71	63	79	69	61	73	65	58	46
2.50	87	77	69	83	74	67	77	69	63	49
3.00	91	82	74	87	79	72	80	73	67	53
4.00	96	88	81	91	84	78	84	78	73	57
5.00	99	92	86	94	88	83	86	81	77	60
ROOM INDEX	UF(total)									Direct
According to DIN EN 13032-2 2004			Suspended				SHRNOM = 1.25			

C Range: 0 - 360DEG
 C Interval: 90.0DEG
 Test Speed: HIGH
 Temperature:25.3DEG
 Test Date:2021-10-18

γ Range: 0 - 180DEG
 γ Interval: 1.0DEG
 Test System:EVERFINE GO-2000B_V1 SYSTEM V2.0.351
 Humidity:65.0%
 Test Distance:9.660m [K=1.0000]
 Remarks:

ISOCANDELA DIAGRAM

Test:U:24.00V I:0.3771A P:9.050W PF:0 Lamp Flux:105.249x1 lm		
NAME: LUC-S-RGB	TYPE:LED Strip	WEIGHT:
SPEC.: 9W	DIM.: 1000*10*9(MM)	SERIAL No.: 001
MFR.: Flexfire LEDs, Inc.	SUR.:0..01*1.0*0.002	Shielding Angle:120

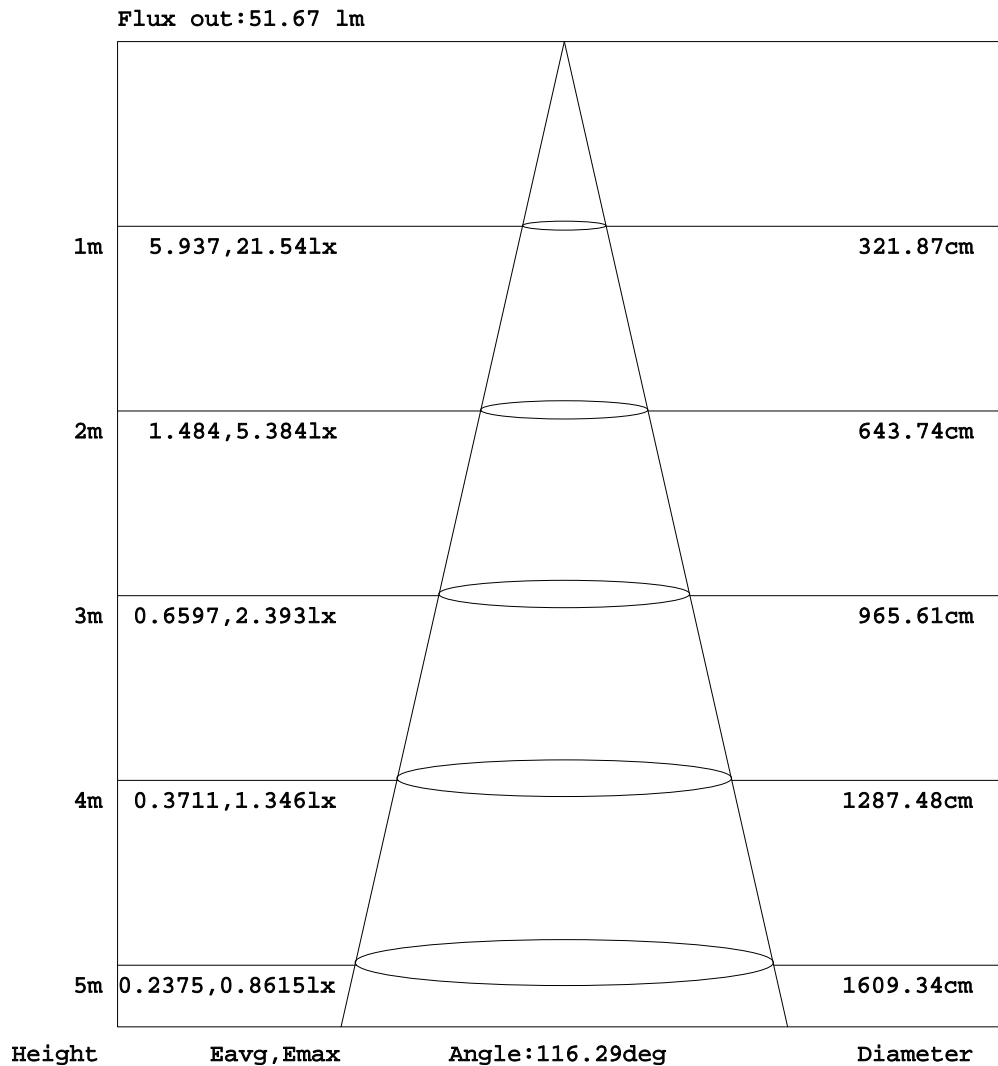


C Range: 0 - 360DEG
 C Interval: 90.0DEG
 Test Speed: HIGH
 Temperature:25.3DEG
 Test Date:2021-10-18

γ Range: 0 - 180DEG
 γ Interval: 1.0DEG
 Test System:EVERFINE GO-2000B_V1 SYSTEM V2.0.351
 Humidity:65.0%
 Test Distance:9.660m [K=1.0000]
 Remarks:

AAI Figure

Test:U:24.00V I:0.3771A P:9.050W PF:0 Lamp Flux:105.249x1 lm		
NAME: LUC-S-RGB	TYPE:LED Strip	WEIGHT:
SPEC.: 9W	DIM.: 1000*10*9(MM)	SERIAL No.: 001
MFR.: Flexfire LEDs, Inc.	SUR.:0..01*1.0*0.002	Shielding Angle:120



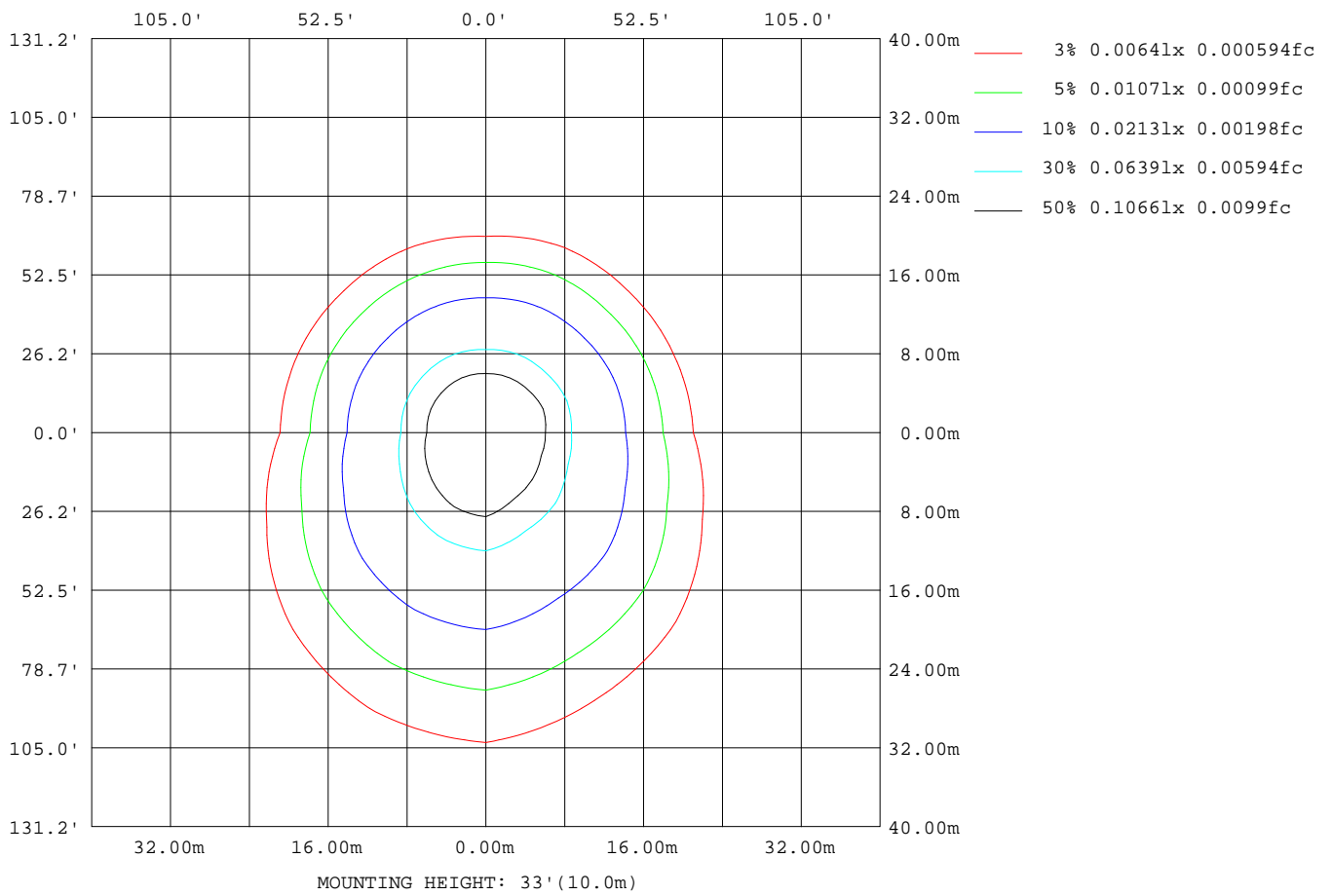
Note:The Curves indicate the illuminated area and the average illumination when the luminaire is at different distance.

C Range: 0 - 360DEG
 C Interval: 90.0DEG
 Test Speed: HIGH
 Temperature:25.3DEG
 Test Date:2021-10-18

γ Range: 0 - 180DEG
 γ Interval: 1.0DEG
 Test System:EVERFINE GO-2000B_V1 SYSTEM V2.0.351
 Humidity:65.0%
 Test Distance:9.660m [K=1.0000]
 Remarks:

ISOLUX DIAGRAM

Test:U:24.00V I:0.3771A P:9.050W PF:0 Lamp Flux:105.249x1 lm		
NAME: LUC-S-RGB	TYPE:LED Strip	WEIGHT:
SPEC.: 9W	DIM.: 1000*10*9(MM)	SERIAL No.: 001
MFR.: Flexfire LEDs, Inc.	SUR.:0..01*1.0*0.002	Shielding Angle:120



C Range: 0 - 360DEG
 C Interval: 90.0DEG
 Test Speed: HIGH
 Temperature:25.3DEG
 Test Date:2021-10-18

γ Range: 0 - 180DEG
 γ Interval: 1.0DEG
 Test System:EVERFINE GO-2000B_V1 SYSTEM V2.0.351
 Humidity:65.0%
 Test Distance:9.660m [K=1.0000]
 Remarks:

LED Avg.L Report

Test:U:24.00V I:0.3771A P:9.050W PF:0 Lamp Flux:105.249x1 lm		
NAME: LUC-S-RGB	TYPE:LED Strip	WEIGHT:
SPEC.: 9W	DIM.: 1000*10*9(MM)	SERIAL No.: 001
MFR.: Flexfire LEDs, Inc.	SUR.:0..01*1.0*0.002	Shielding Angle:120

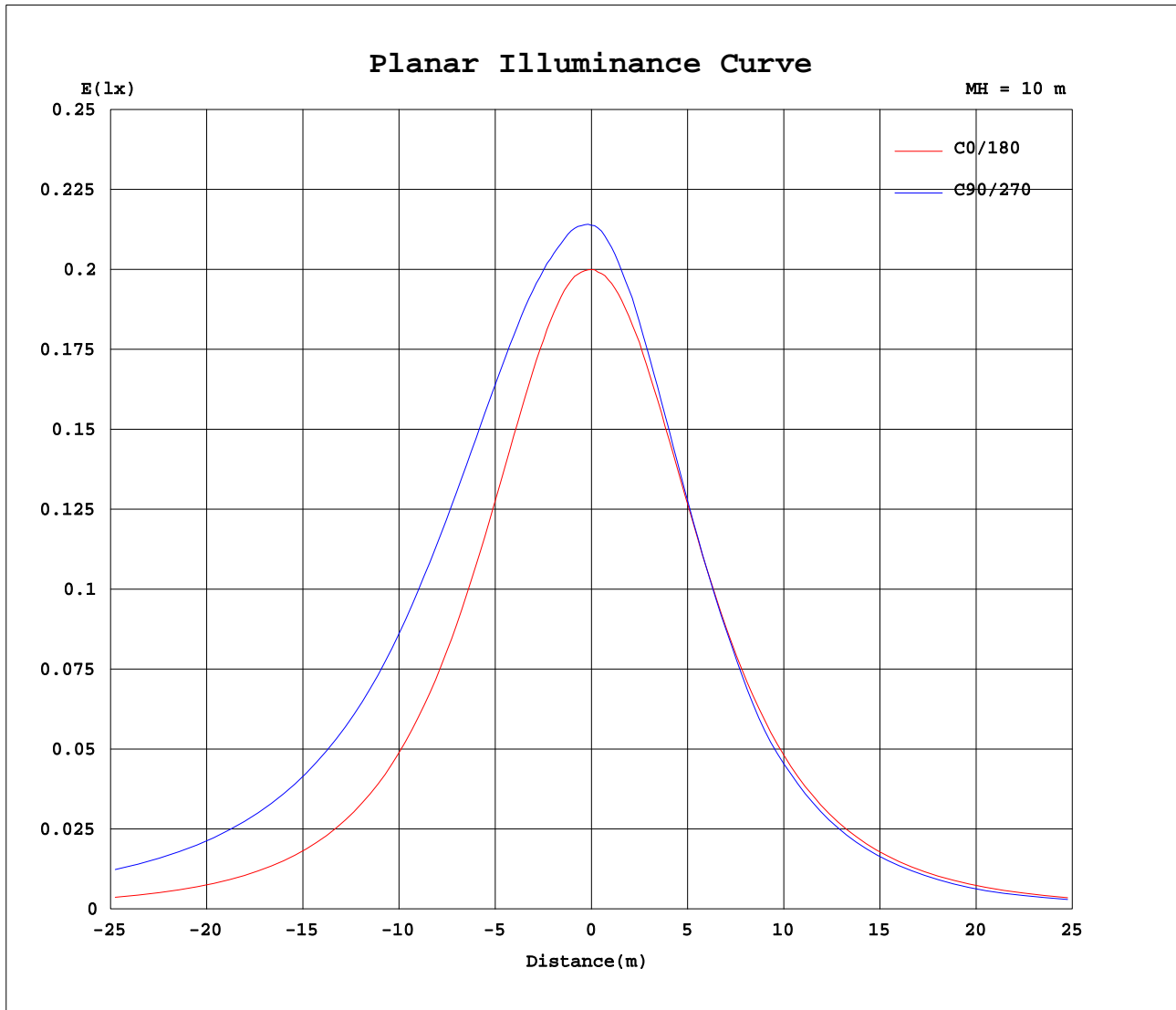
AvgL	cd/m2
L_0~180(65)av	966506
L_0~180(75)av	922177
L_0~180(85)av	976374
L_90~270(65)av	1744833
L_90~270(75)av	2485823
L_90~270(85)av	6354317
L_45(65)av	1421882
L_45(75)av	1864954
L_45(85)av	4318847

Standard: GB/T 29293-2012

C Range: 0 - 360DEG
C Interval: 90.0DEG
Test Speed: HIGH
Temperature:25.3DEG
Test Date:2021-10-18

γ Range: 0 - 180DEG
 γ Interval: 1.0DEG
Test System:EVERFINE GO-2000B_V1 SYSTEM V2.0.351
Humidity:65.0%
Test Distance:9.660m [K=1.0000]
Remarks:

Planar Illuminance Curve



C Range: 0 - 360DEG
 C Interval: 90.0DEG
 Test Speed: HIGH
 Temperature: 25.3DEG
 Test Date: 2021-10-18

γ Range: 0 - 180DEG
 γ Interval: 1.0DEG
 Test System: EVERFINE GO-2000B_V1 SYSTEM V2.0.351
 Humidity: 65.0%
 Test Distance: 9.660m [K=1.0000]
 Remarks:

LUMINOUS DISTRIBUTION INTENSITY DATA

Test:U:24.00V I:0.3771A P:9.050W PF:0 Lamp Flux:105.249x1 lm		
NAME: LUC-S-RGB	TYPE:LED Strip	WEIGHT:
SPEC.: 9W	DIM.: 1000*10*9(MM)	SERIAL No.: 001
MFR.: Flexfire LEDs, Inc.	SUR.:0..01*1.0*0.002	Shielding Angle:120

Table--1

UNIT: cd

C(DEG) γ (DEG)	0	22.5	45	67.5	90	112.5	135	157.5	180	202.5	225	247.5	270	292.5	315	337.5			
0	20.8	20.8	20.8	20.8	20.8	20.8	20.8	20.8	20.8	20.8	20.8	20.8	20.8	20.8	20.8	20.8			
5	20.9	20.7	20.7	20.7	21.0	21.0	20.9	20.8	20.8	20.9	20.8	20.9	20.6	20.7	20.7	20.8			
10	20.6	20.4	20.3	20.5	21.1	21.0	20.9	20.7	20.5	20.8	20.6	20.6	20.1	20.1	20.3	20.6			
15	20.2	20.0	20.0	20.3	21.4	21.2	20.8	20.3	20.1	20.4	20.2	20.0	19.4	19.5	19.7	20.1			
20	19.6	19.4	19.7	20.1	21.8	21.5	20.7	19.9	19.5	19.8	19.6	19.2	18.6	18.8	19.0	19.5			
25	18.9	18.8	19.5	20.1	22.2	21.7	20.6	19.2	18.7	19.1	18.8	18.3	17.7	17.8	18.0	18.6			
30	18.0	18.1	19.3	20.1	22.7	22.0	20.4	18.5	17.8	18.1	17.8	17.2	16.6	16.8	17.0	17.6			
35	16.9	17.3	19.1	20.1	23.1	22.2	20.1	17.7	16.7	17.0	16.6	16.0	15.5	15.6	15.8	16.4			
40	15.7	16.5	18.9	20.1	23.5	22.4	19.9	16.8	15.5	15.7	15.2	14.7	13.9	14.3	14.4	15.2			
45	14.4	15.6	18.7	20.1	23.8	22.4	19.6	15.8	14.2	14.4	13.7	13.3	12.5	13.0	13.1	13.7			
50	13.0	14.7	18.5	19.9	23.8	22.3	19.2	14.8	12.8	12.8	12.2	11.8	11.2	11.5	11.6	12.2			
55	11.5	13.8	18.0	19.7	23.8	22.0	18.6	13.7	11.3	11.2	10.6	10.1	9.76	10.0	10.1	10.6			
60	9.95	12.9	17.4	19.5	23.5	21.6	17.9	12.7	9.73	9.52	8.97	8.49	8.21	8.48	8.48	8.90			
65	8.28	11.9	16.8	19.3	23.1	21.2	17.1	11.6	8.05	7.79	7.29	6.92	6.36	6.94	6.90	7.23			
70	6.56	10.9	16.0	18.9	22.7	20.6	16.3	10.4	6.31	6.06	5.66	5.10	5.02	5.36	5.31	5.56			
75	4.96	9.76	15.3	18.5	22.1	20.0	15.4	9.25	4.59	4.41	4.06	3.79	3.61	3.89	3.79	3.97			
80	3.33	8.67	14.6	18.0	21.5	19.3	14.6	8.14	2.93	2.78	2.56	2.52	2.38	2.56	2.35	2.42			
85	1.92	7.75	13.9	17.5	20.8	18.6	13.7	7.18	1.48	1.37	1.28	1.46	1.39	1.49	1.18	1.11			
90	0.98	7.02	13.3	16.9	20.0	17.5	13.0	6.34	0.36	0.43	0.53	0.82	0.72	0.80	0.46	0.30			
95	0.81	6.48	12.7	16.4	19.1	12.9	8.87	4.72	0.22	0.10	0.11	0.15	0.15	0.19	0.13	0.09			
100	0.81	6.05	12.1	15.7	18.2	14.3	10.5	4.84	0.35	0.08	0.11	0.12	0.15	0.13	0.13	0.09			
105	0.81	5.69	11.5	15.0	17.2	14.2	9.64	4.44	0.38	0.08	0.11	0.12	0.15	0.13	0.15	0.09			
110	0.70	5.34	10.8	14.1	16.0	13.5	8.93	4.09	0.38	0.08	0.11	0.12	0.15	0.13	0.15	0.15			
115	0.70	5.08	10.06	13.2	14.5	12.6	8.46	3.45	0.40	0.08	0.11	0.12	0.15	0.13	0.15	0.15			
120	0.70	4.69	9.31	12.2	13.1	11.4	6.85	2.92	0.36	0.08	0.11	0.12	0.15	0.13	0.16	0.15			
125	0.70	4.32	8.54	11.1	11.5	10.0	5.88	2.59	0.36	0.08	0.14	0.08	0.15	0.13	0.16	0.21			
130	0.65	3.91	7.76	10.0	9.88	8.15	5.13	2.25	0.36	0.14	0.16	0.08	0.15	0.13	0.18	0.22			
135	0.63	3.45	6.99	8.97	8.34	6.68	4.43	1.91	0.36	0.21	0.20	0.11	0.15	0.13	0.21	0.28			
140	0.57	3.05	6.21	7.90	6.96	5.61	3.76	1.58	0.33	0.22	0.23	0.11	0.16	0.13	0.24	0.30			
145	0.51	2.67	5.34	6.81	5.75	4.69	3.08	1.44	0.33	0.22	0.23	0.11	0.16	0.13	0.24	0.30			
150	0.51	2.32	4.44	5.68	4.46	3.58	2.44	1.42	0.32	0.24	0.23	0.11	0.16	0.15	0.24	0.30			
155	0.44	2.07	3.66	4.54	3.25	2.60	2.13	1.39	0.27	0.24	0.23	0.17	0.16	0.16	0.24	0.30			
160	0.41	1.73	2.90	3.47	2.61	1.91	1.94	1.32	0.27	0.24	0.20	0.17	0.16	0.18	0.21	0.30			
165	0.36	1.49	2.30	2.59	2.07	1.30	1.70	1.20	0.27	0.24	0.17	0.17	0.16	0.18	0.21	0.27			
170	0.32	1.10	1.78	1.94	0.82	1.13	1.48	0.95	0.27	0.24	0.17	0.17	0.16	0.18	0.21	0.25			
175	0.22	0.49	1.14	1.22	0.56	0.93	1.01	0.43	0.27	0.19	0.19	0.17	0.16	0.18	0.22	0.25			
180	0.22	0.24	0.28	0.27	0.19	0.25	0.34	0.27	0.27	0.22	0.23	0.23	0.19	0.24	0.25	0.25			

C Range: 0 - 360DEG
 C Interval: 90.0DEG
 Test Speed: HIGH
 Temperature:25.3DEG
 Test Date:2021-10-18

γ Range: 0 - 180DEG
 γ Interval: 1.0DEG
 Test System:EVERFINE GO-2000B_V1 SYSTEM V2.0.351
 Humidity:65.0%
 Test Distance:9.660m [K=1.0000]
 Remarks: