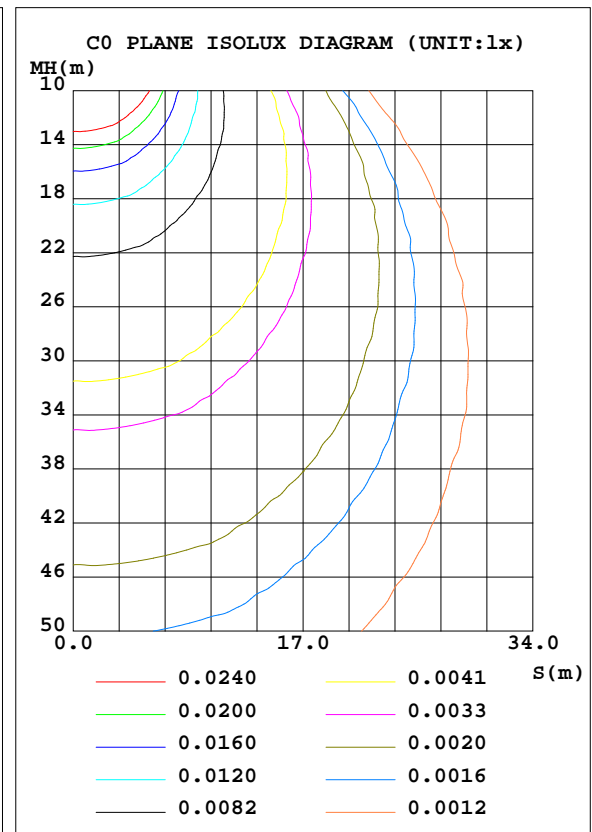
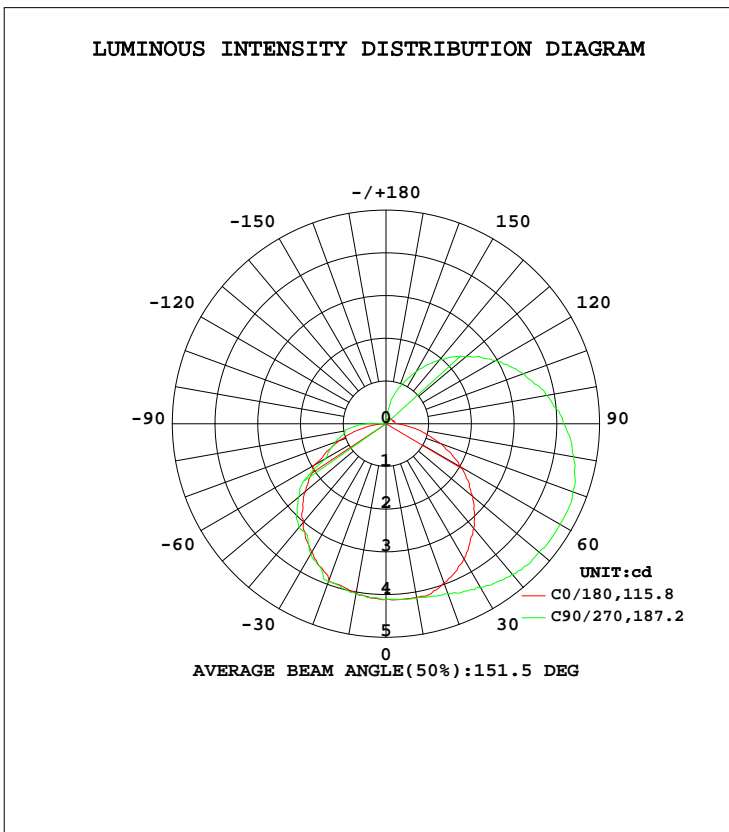


LUMINAIRE PHOTOMETRIC TEST REPORT

Test:U:24.00V I:0.3775A P:9.060W PF:0 Lamp Flux:22.1887x1 lm		
NAME: LUC-S-RGB	TYPE:LED Strip	WEIGHT:
SPEC.: 9W	DIM.: 1000*10*9(MM)	SERIAL No.: 001
MFR.: Flexfire LEDs, Inc.	SUR.:0..01*1.0*0.002	Shielding Angle:120

DATA OF LAMP		PHOTOMETRIC DATA			
MODEL		Imax(cd)	4.709	S/MH(C0/180)	1.26
NOMINAL POWER(W)		LOR(%)	100.0	S/MH(C90/270)	1.26
RATED VOLTAGE(V)		TOTAL FLUX(lm)	22.189	η UP, DN(C0-180)	21.1,48.0
NOMINAL FLUX(lm)	22.1887	CIE CLASS	SEMI-D.	η UP, DN(C180-360)	0.9,30.0
LAMPS INSIDE	1	η up(%)	22.0	CIBSE SHR NOM	1.50
TEST VOLTAGE(V)		η down(%)	78.0	CIBSE SHR MAX	1.55



C Range: 0 - 360DEG
 C Interval: 90.0DEG
 Test Speed: HIGH
 Temperature:25.3DEG
 Test Date:2021-10-18

γ Range: 0 - 180DEG
 γ Interval: 1.0DEG
 Test System:EVERFINE GO-2000B_V1 SYSTEM V2.0.351
 Humidity:65.0%
 Test Distance:9.660m [K=1.0000]
 Remarks:

ZONAL FLUX DIAGRAM

ZONAL FLUX DIAGRAM:

γ	C0	C45	C90	C135	C180	C225	C270	C315	γ	Φ zone	Φ total	%lum,lamp
10	4.126	4.142	4.142	4.111	4.019	4.049	4.049	4.035	0- 10	0.3911	0.3911	1.76,1.76
20	3.958	4.142	4.233	4.111	3.911	3.940	3.927	3.868	10- 20	1.146	1.537	6.93,6.93
30	3.651	4.142	4.433	4.111	3.467	3.568	3.512	3.580	20- 30	1.808	3.345	15.1,15.1
40	3.191	4.111	4.602	3.990	3.006	3.164	3.160	3.185	30- 40	2.309	5.654	25.5,25.5
50	2.669	3.987	4.679	3.854	2.469	2.683	2.668	2.669	40- 50	2.607	8.261	37.2,37.2
60	2.026	3.755	4.709	3.641	1.946	2.094	1.641	2.093	50- 60	2.673	10.93	49.3,49.3
70	1.366	3.476	4.648	3.353	1.180	1.442	1.273	1.455	60- 70	2.505	13.44	60.6,60.6
80	0.7216	3.180	4.464	3.034	0.4902	0.8834	0.9664	0.8485	70- 80	2.170	15.61	70.3,70.3
90	0.2611	2.870	4.157	2.550	0.0460	0.2018	0.4750	0.2572	80- 90	1.700	17.31	78,78
100	0.2148	2.576	3.820	2.124	0.0460	0.0465	0.0460	0.0455	90-100	1.269	18.58	83.7,83.7
110	0.1992	2.281	3.436	2.048	0.0460	0.0619	0.0460	0.0455	100-110	1.093	19.67	88.7,88.7
120	0.1687	1.971	2.961	1.503	0.0460	0.0465	0.0460	0.0303	110-120	0.8942	20.57	92.7,92.7
130	0.1687	1.660	2.440	1.138	0.0460	0.0467	0.0460	0.0303	120-130	0.6672	21.23	95.7,95.7
140	0.1534	1.304	1.949	0.7892	0.0460	0.0465	0.0460	0.0303	130-140	0.4579	21.69	97.8,97.8
150	0.1381	0.9933	1.397	0.5464	0.0460	0.0622	0.0614	0.0303	140-150	0.2790	21.97	99,99
160	0.1074	0.6829	0.9205	0.4399	0.0460	0.0465	0.0614	0.0303	150-160	0.1478	22.12	99.7,99.7
170	0.0922	0.4192	0.3229	0.3491	0.0460	0.0465	0.0615	0.0303	160-170	0.0598	22.18	99.9,99.9
180	0.0153	0.1086	0.0920	0.0910	0.0460	0.0465	0.0614	0.0455	170-180	0.0115	22.19	100,100
DEG	LUMINOUS INTENSITY:cd									UNIT:lm		

Conical surface Flux(90deg): 6.9348 lm

%lum = 31.3%

%lamp = 31.3%

Conical surface Flux(120deg): 10.934 lm

%lum = 49.3%

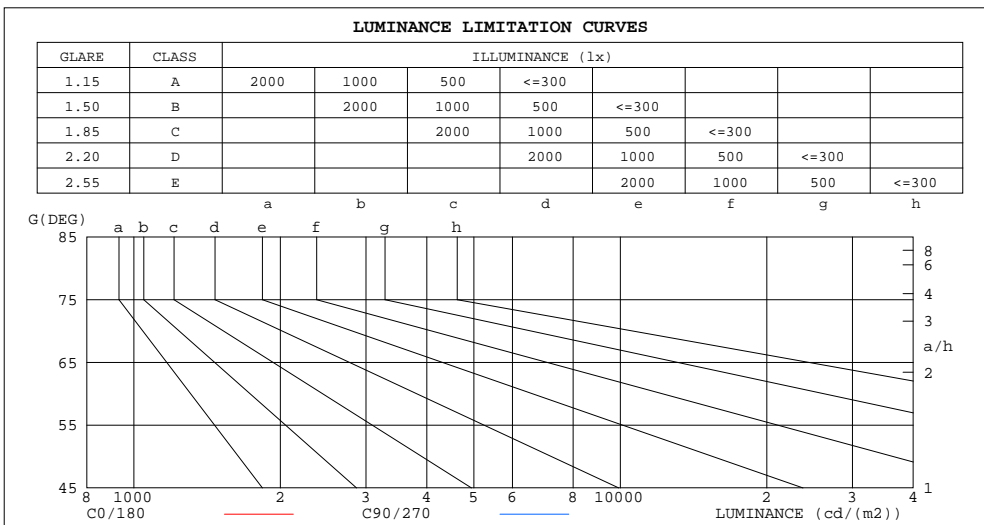
%lamp = 49.3%

C Range: 0 - 360DEG
 C Interval: 90.0DEG
 Test Speed: HIGH
 Temperature:25.3DEG
 Test Date:2021-10-18

γ Range: 0 - 180DEG
 γ Interval: 1.0DEG
 Test System:EVERFINE GO-2000B_V1 SYSTEM V2.0.351
 Humidity:65.0%
 Test Distance:9.660m [K=1.0000]
 Remarks:

LUMINANCE LIMITATION CURVES

Test:U:24.00V I:0.3775A P:9.060W PF:0 Lamp Flux:22.1887x1 lm		
NAME: LUC-S-RGB	TYPE:LED Strip	WEIGHT:
SPEC.: 9W	DIM.: 1000*10*9(MM)	SERIAL No.: 001
MFR.: Flexfire LEDs, Inc.	SUR.:0..01*1.0*0.002	Shielding Angle:120



LUMINANCE cd/(m2)		
G(DEG)	C0/180	C90/270
85	252938	2465421
80	205677	1272336
75	187980	874214
70	197653	672642
65	199468	551510
60	200508	466156
55	203901	406359
50	205530	360243
45	205110	327451

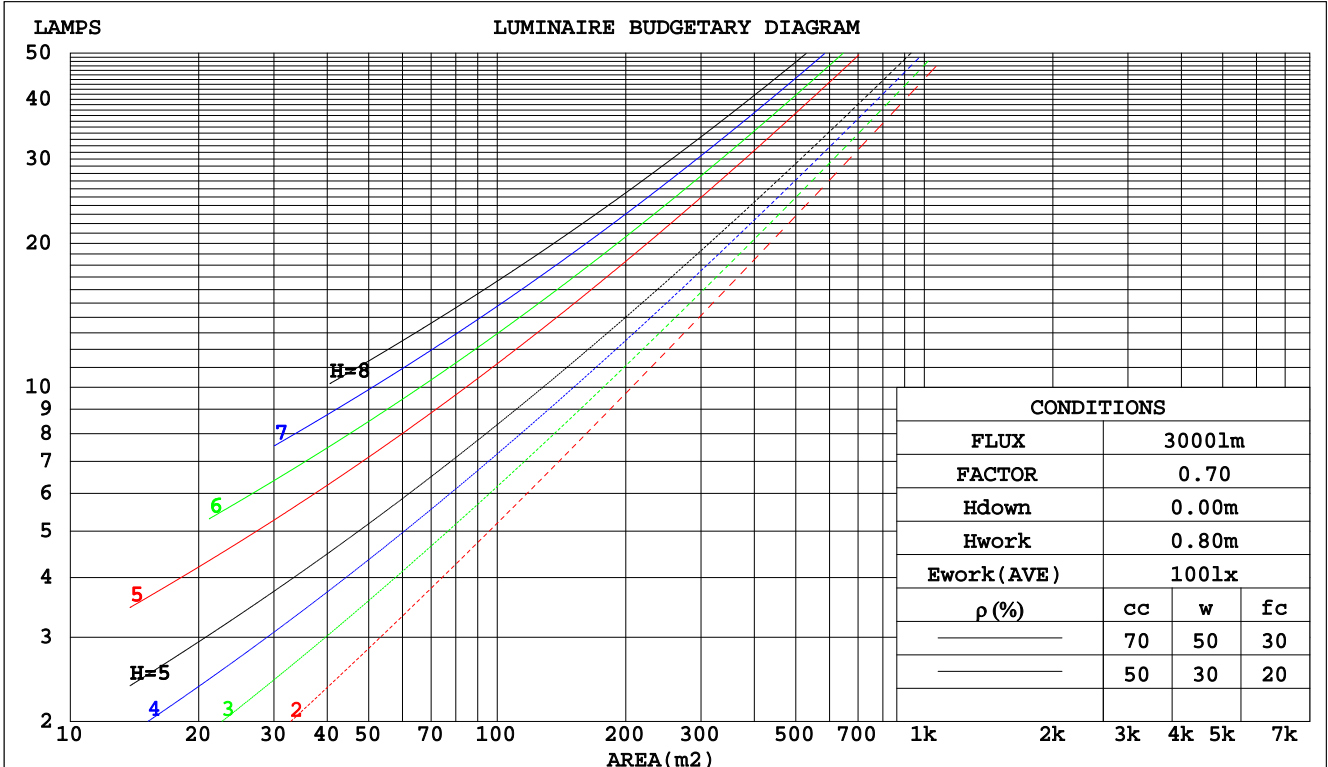
C Range: 0 - 360DEG
 C Interval: 90.0DEG
 Test Speed: HIGH
 Temperature:25.3DEG
 Test Date:2021-10-18

γ Range: 0 - 180DEG
 γ Interval: 1.0DEG
 Test System:EVERFINE GO-2000B_V1 SYSTEM V2.0.351
 Humidity:65.0%
 Test Distance:9.660m [K=1.0000]
 Remarks:

CU AND LUMINAIRE BUDGETARY ESTIMATE DIAGRAM

Test:U:24.00V I:0.3775A P:9.060W PF:0 Lamp Flux:22.1887x1 lm		
NAME: LUC-S-RGB	TYPE:LED Strip	WEIGHT:
SPEC.: 9W	DIM.: 1000*10*9(MM)	SERIAL No.: 001
MFR.: Flexfire LEDs, Inc.	SUR.:0..01*1.0*0.002	Shielding Angle:120

pcc	80%			70%			50%			30%			10%			0
	50%	30%	10%	50%	30%	10%	50%	30%	10%	50%	30%	10%	50%	30%	10%	0
pw																0
pfc	20%			20%			20%			20%			20%			0
RCR	RCR:Room Cavity Ratio Coefficients of Utilization(CU)															
0.0	1.14	1.14	1.14	1.09	1.09	1.09	.99	.99	.99	.90	.90	.90	.82	.82	.82	.78
1.0	.94	.89	.84	.90	.85	.81	.82	.78	.74	.74	.71	.68	.67	.64	.62	.58
2.0	.80	.72	.66	.77	.69	.63	.69	.64	.58	.63	.58	.54	.57	.53	.49	.46
3.0	.70	.60	.53	.66	.58	.51	.60	.53	.48	.54	.49	.44	.49	.44	.41	.37
4.0	.61	.51	.44	.58	.49	.43	.53	.45	.40	.48	.42	.37	.43	.38	.34	.31
5.0	.54	.44	.37	.51	.43	.36	.47	.39	.34	.43	.36	.31	.38	.33	.29	.26
6.0	.48	.39	.32	.46	.37	.31	.42	.35	.29	.38	.32	.27	.35	.29	.25	.23
7.0	.43	.34	.28	.42	.33	.27	.38	.31	.25	.35	.28	.24	.31	.26	.22	.20
8.0	.39	.31	.25	.38	.30	.24	.35	.27	.22	.32	.25	.21	.29	.24	.20	.17
9.0	.36	.28	.22	.34	.27	.21	.32	.25	.20	.29	.23	.19	.27	.21	.18	.15
10.0	.33	.25	.20	.32	.24	.19	.29	.23	.18	.27	.21	.17	.25	.19	.16	.14



C Range: 0 - 360DEG
 C Interval: 90.0DEG
 Test Speed: HIGH
 Temperature:25.3DEG
 Test Date:2021-10-18

γ Range: 0 - 180DEG
 γ Interval: 1.0DEG
 Test System:EVERFINE GO-2000B_V1 SYSTEM V2.0.351
 Humidity:65.0%
 Test Distance:9.660m [K=1.0000]
 Remarks:

WEC AND CCEC

Test:U:24.00V I:0.3775A P:9.060W PF:0 Lamp Flux:22.1887x1 lm		
NAME: LUC-S-RGB	TYPE:LED Strip	WEIGHT:
SPEC.: 9W	DIM.: 1000*10*9(MM)	SERIAL No.: 001
MFR.: Flexfire LEDs, Inc.	SUR.:0..01*1.0*0.002	Shielding Angle:120

ρcc	80%			70%			50%			30%			10%			0
ρw	50%	30%	10%	50%	30%	10%	50%	30%	10%	50%	30%	10%	50%	30%	10%	0
ρfc	20%			20%			20%			20%			20%			0
RCR	RCR:Room Cavity Ratio						Wall Exitance Coefficients(WEC)									
0.0																
1.0	.391	.222	.070	.377	.215	.068	.350	.201	.064	.326	.188	.060	.304	.176	.057	
2.0	.337	.185	.057	.324	.179	.055	.301	.167	.052	.279	.156	.049	.259	.146	.046	
3.0	.299	.159	.048	.287	.154	.046	.266	.144	.044	.246	.135	.041	.227	.126	.039	
4.0	.268	.139	.041	.258	.135	.040	.238	.126	.038	.220	.118	.036	.203	.111	.034	
5.0	.243	.124	.036	.234	.120	.035	.216	.113	.033	.200	.105	.031	.184	.099	.030	
6.0	.223	.112	.032	.214	.108	.031	.198	.102	.030	.183	.095	.028	.169	.089	.026	
7.0	.205	.102	.029	.198	.098	.028	.183	.092	.027	.169	.086	.025	.156	.081	.024	
8.0	.190	.093	.026	.183	.090	.025	.169	.085	.024	.157	.079	.023	.144	.074	.022	
9.0	.177	.086	.024	.171	.083	.023	.158	.078	.022	.146	.073	.021	.135	.068	.020	
10.0	.166	.079	.022	.160	.077	.022	.148	.072	.020	.137	.068	.019	.126	.064	.018	

ρcc	80%			70%			50%			30%			10%			0
ρw	50%	30%	10%	50%	30%	10%	50%	30%	10%	50%	30%	10%	50%	30%	10%	0
ρfc	20%			20%			20%			20%			20%			0
RCR	RCR:Room Cavity Ratio						Ceiling Cavity Exitance Coefficients(CCEC)									
0.0	.358	.358	.358	.306	.306	.306	.209	.209	.209	.120	.120	.120	.038	.038	.038	
1.0	.355	.324	.297	.304	.278	.256	.208	.192	.177	.120	.111	.103	.038	.036	.033	
2.0	.348	.302	.263	.298	.260	.227	.204	.180	.158	.118	.105	.093	.038	.034	.030	
3.0	.341	.285	.241	.292	.246	.209	.201	.171	.147	.116	.100	.086	.037	.032	.028	
4.0	.333	.273	.227	.286	.236	.197	.197	.164	.139	.114	.096	.082	.037	.031	.027	
5.0	.326	.263	.218	.280	.228	.189	.193	.159	.134	.112	.093	.079	.036	.031	.026	
6.0	.318	.256	.211	.274	.221	.183	.189	.155	.130	.109	.091	.077	.035	.030	.025	
7.0	.311	.249	.206	.268	.216	.179	.185	.151	.127	.107	.089	.076	.035	.029	.025	
8.0	.304	.244	.202	.262	.211	.176	.181	.148	.125	.106	.088	.074	.034	.029	.025	
9.0	.298	.239	.199	.257	.207	.173	.178	.146	.123	.104	.086	.073	.034	.028	.024	
10.0	.292	.235	.196	.252	.204	.171	.175	.143	.122	.102	.085	.073	.033	.028	.024	

C Range: 0 - 360DEG
 C Interval: 90.0DEG
 Test Speed: HIGH
 Temperature:25.3DEG
 Test Date:2021-10-18

γ Range: 0 - 180DEG
 γ Interval: 1.0DEG
 Test System:EVERFINE GO-2000B_V1 SYSTEM V2.0.351
 Humidity:65.0%
 Test Distance:9.660m [K=1.0000]
 Remarks:

UGR(Unified Glare Rating) Table

Test:U:24.00V I:0.3775A P:9.060W PF:0 Lamp Flux:22.1887x1 lm										
NAME: LUC-S-RGB					TYPE:LED Strip			WEIGHT:		
SPEC.: 9W					DIM.:			SERIAL No.: 001		
MFR.: Flexfire LEDs, Inc.					SUR.:0..01*1.0*0.002			Shielding Angle:120		
ceiling/cavity	0.7	0.7	0.5	0.5	0.3	0.7	0.7	0.5	0.5	0.3
walls	0.5	0.3	0.5	0.3	0.3	0.5	0.3	0.5	0.3	0.3
working plane	0.2	0.2	0.2	0.2	0.2	0.2	0.2	0.2	0.2	0.2
Room dimensions	Viewed crosswise					Viewed endwise				
x = 2H y = 2H	30.4	31.7	30.9	32.3	32.9	33.8	35.2	34.4	35.7	36.4
3H	32.1	33.4	32.7	33.9	34.6	37.1	38.3	37.7	38.9	39.6
4H	32.9	34.1	33.5	34.7	35.4	38.9	40.1	39.5	40.7	41.4
6H	33.6	34.7	34.3	35.4	36.1	40.9	42.0	41.5	42.6	43.4
8H	33.9	35.0	34.6	35.6	36.4	42.0	43.1	42.6	43.7	44.5
12H	34.2	35.2	34.8	35.9	36.6	43.3	44.3	43.9	45.0	45.7
4H 2H	32.1	33.3	32.8	33.9	34.6	34.4	35.6	35.1	36.2	36.9
3H	34.2	35.2	34.8	35.8	36.6	37.9	38.9	38.6	39.6	40.4
4H	35.2	36.1	35.9	36.8	37.6	39.9	40.9	40.6	41.5	42.3
6H	36.1	36.9	36.7	37.6	38.4	42.1	43.0	42.8	43.7	44.5
8H	36.4	37.2	37.1	37.9	38.8	43.4	44.2	44.1	44.9	45.7
12H	36.8	37.5	37.5	38.2	39.1	44.8	45.5	45.5	46.3	47.1
8H 4H	36.8	37.6	37.5	38.3	39.2	40.3	41.1	41.0	41.8	42.6
6H	38.1	38.8	38.9	39.5	40.4	42.8	43.5	43.6	44.2	45.1
8H	38.7	39.3	39.5	40.1	41.0	44.3	44.9	45.1	45.7	46.6
12H	39.3	39.8	40.1	40.6	41.5	46.0	46.5	46.8	47.3	48.2
12H 4H	37.4	38.1	38.1	38.8	39.7	40.3	41.1	41.1	41.8	42.7
6H	39.0	39.6	39.7	40.3	41.2	43.0	43.6	43.7	44.3	45.2
8H	39.8	40.3	40.6	41.1	42.0	44.6	45.1	45.3	45.9	46.8
Variations with the observer position at spacings:										
S = 1.0H	+ 0.1 / - 0.1					+ 0.1 / - 0.1				
1.5H	+ 0.2 / - 0.3					+ 0.2 / - 0.3				
2.0H	+ 0.3 / - 0.4					+ 0.3 / - 0.4				

CIE Pub.117 Corrected 22.19 lm Total Lamp Luminous Flux.(8log(F/F0) = -13.2)

C Range: 0 - 360DEG
C Interval: 90.0DEG
Test Speed: HIGH
Temperature:25.3DEG
Test Date:2021-10-18

γ Range: 0 - 180DEG
 γ Interval: 1.0DEG
Test System:EVERFINE GO-2000B_V1 SYSTEM V2.0.351
Humidity:65.0%
Test Distance:9.660m [K=1.0000]
Remarks:

UTILIZATION FACTORS TABLE

Test:U:24.00V I:0.3775A P:9.060W PF:0 Lamp Flux:22.1887x1 lm		
NAME: LUC-S-RGB	TYPE:LED Strip	WEIGHT:
SPEC.: 9W	DIM.: 1000*10*9(MM)	SERIAL No.: 001
MFR.: Flexfire LEDs, Inc.	SUR.:0..01*1.0*0.002	Shielding Angle:120

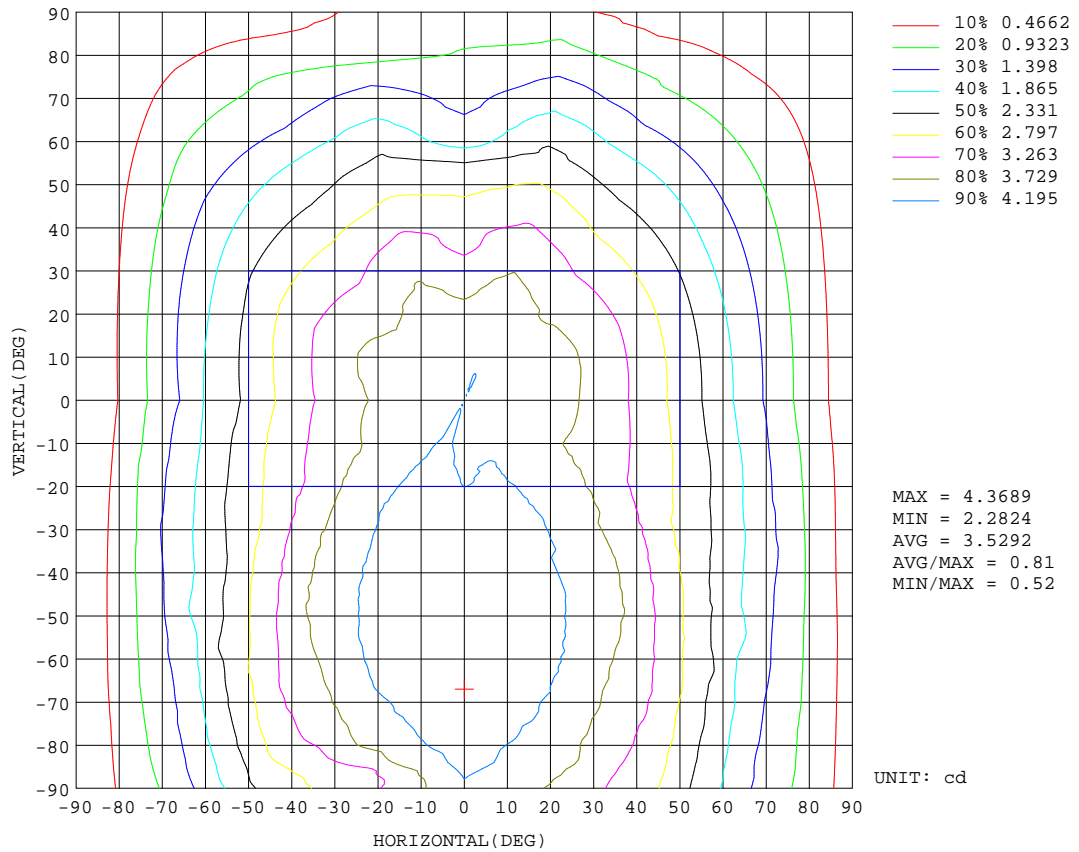
REFLECTANCE										
Ceiling	0.8	0.8	0.8	0.7	0.7	0.7	0.5	0.5	0.5	0
Walls	0.7	0.5	0.3	0.7	0.5	0.3	0.7	0.5	0.3	0
Working plane	0.2	0.2	0.2	0.2	0.2	0.2	0.2	0.2	0.2	0
ROOM INDEX	UTILIZATION FACTORS(PERCENT) $k(RI) \times RCR = 5$									
k = 0.60	46	33	26	45	33	26	42	32	25	18
0.80	55	42	34	53	41	33	50	39	32	24
1.00	63	49	41	60	48	40	57	48	39	30
1.25	70	57	48	67	55	47	62	52	45	35
1.50	75	62	53	72	60	52	66	57	50	39
2.00	82	71	62	79	68	61	72	64	57	45
2.50	87	76	68	83	74	66	76	68	62	49
3.00	91	81	73	87	78	71	79	72	67	52
4.00	95	87	81	91	84	78	83	77	72	57
5.00	99	91	85	94	88	82	86	81	76	60
ROOM INDEX	UF(total)									Direct
According to DIN EN 13032-2 2004			Suspended				SHRNOM = 1.25			

C Range: 0 - 360DEG
 C Interval: 90.0DEG
 Test Speed: HIGH
 Temperature:25.3DEG
 Test Date:2021-10-18

γ Range: 0 - 180DEG
 γ Interval: 1.0DEG
 Test System:EVERFINE GO-2000B_V1 SYSTEM V2.0.351
 Humidity:65.0%
 Test Distance:9.660m [K=1.0000]
 Remarks:

ISOCANDELA DIAGRAM

Test:U:24.00V I:0.3775A P:9.060W PF:0 Lamp Flux:22.1887x1 lm		
NAME: LUC-S-RGB	TYPE:LED Strip	WEIGHT:
SPEC.: 9W	DIM.: 1000*10*9(MM)	SERIAL No.: 001
MFR.: Flexfire LEDs, Inc.	SUR.:0..01*1.0*0.002	Shielding Angle:120

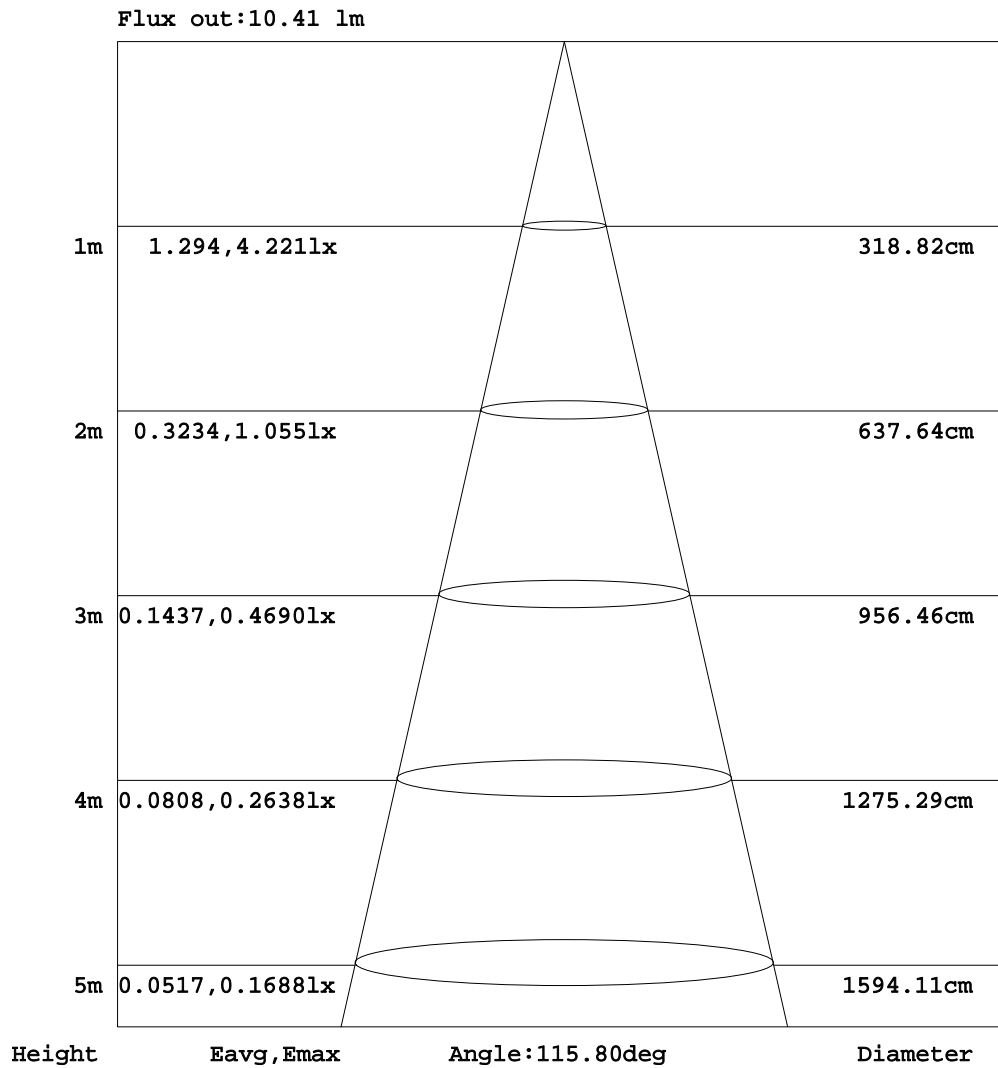


C Range: 0 - 360DEG
 C Interval: 90.0DEG
 Test Speed: HIGH
 Temperature:25.3DEG
 Test Date:2021-10-18

γ Range: 0 - 180DEG
 γ Interval: 1.0DEG
 Test System:EVERFINE GO-2000B_V1 SYSTEM V2.0.351
 Humidity:65.0%
 Test Distance:9.660m [K=1.0000]
 Remarks:

AAI Figure

Test:U:24.00V I:0.3775A P:9.060W PF:0 Lamp Flux:22.1887x1 lm		
NAME: LUC-S-RGB	TYPE:LED Strip	WEIGHT:
SPEC.: 9W	DIM.: 1000*10*9(MM)	SERIAL No.: 001
MFR.: Flexfire LEDs, Inc.	SUR.:0..01*1.0*0.002	Shielding Angle:120



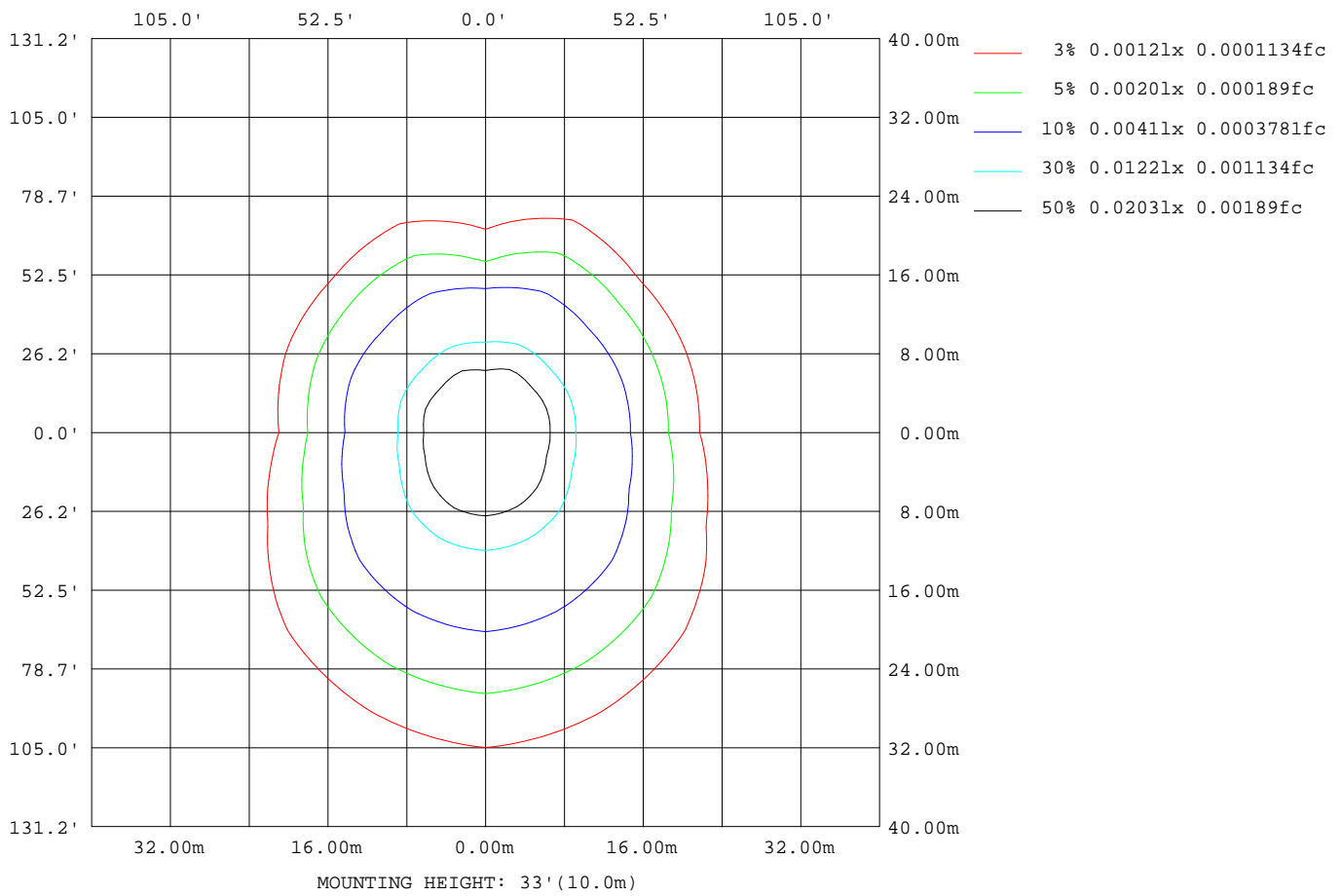
Note:The Curves indicate the illuminated area and the average illumination when the luminaire is at different distance.

C Range: 0 - 360DEG
 C Interval: 90.0DEG
 Test Speed: HIGH
 Temperature:25.3DEG
 Test Date:2021-10-18

γ Range: 0 - 180DEG
 γ Interval: 1.0DEG
 Test System:EVERFINE GO-2000B_V1 SYSTEM V2.0.351
 Humidity:65.0%
 Test Distance:9.660m [K=1.0000]
 Remarks:

ISOLUX DIAGRAM

Test:U:24.00V I:0.3775A P:9.060W PF:0 Lamp Flux:22.1887x1 lm		
NAME: LUC-S-RGB	TYPE:LED Strip	WEIGHT:
SPEC.: 9W	DIM.: 1000*10*9(MM)	SERIAL No.: 001
MFR.: Flexfire LEDs, Inc.	SUR.:0..01*1.0*0.002	Shielding Angle:120



C Range: 0 - 360DEG
 C Interval: 90.0DEG
 Test Speed: HIGH
 Temperature:25.3DEG
 Test Date:2021-10-18

γ Range: 0 - 180DEG
 γ Interval: 1.0DEG
 Test System:EVERFINE GO-2000B_V1 SYSTEM V2.0.351
 Humidity:65.0%
 Test Distance:9.660m [K=1.0000]
 Remarks:

LED Avg.L Report

Test:U:24.00V I:0.3775A P:9.060W PF:0 Lamp Flux:22.1887x1 lm		
NAME: LUC-S-RGB	TYPE:LED Strip	WEIGHT:
SPEC.: 9W	DIM.: 1000*10*9(MM)	SERIAL No.: 001
MFR.: Flexfire LEDs, Inc.	SUR.:0..01*1.0*0.002	Shielding Angle:120

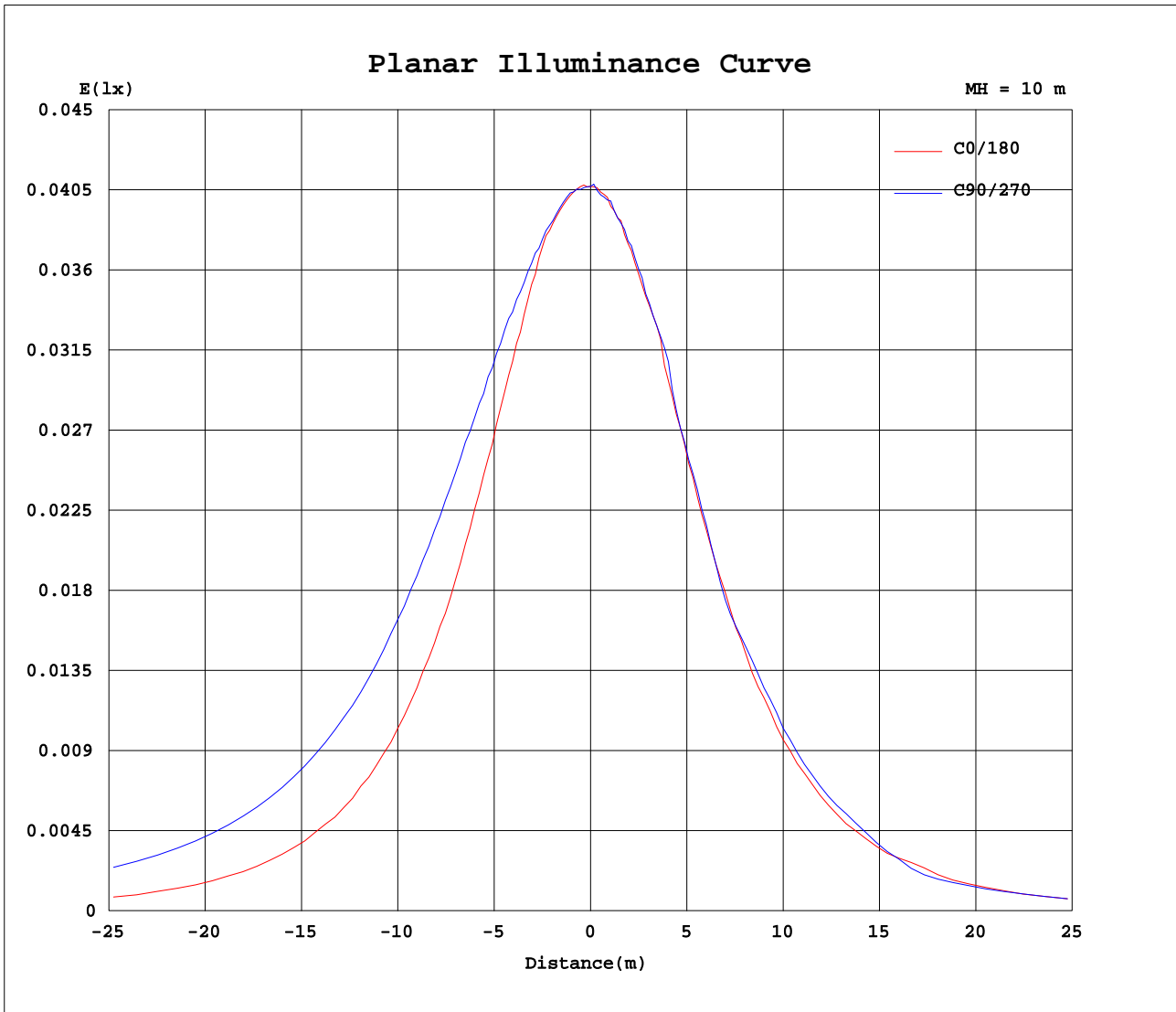
AvgL	cd/m2
L_0~180(65)av	190528
L_0~180(75)av	173456
L_0~180(85)av	189204
L_90~270(65)av	364757
L_90~270(75)av	545230
L_90~270(85)av	1456395
L_45(65)av	314934
L_45(75)av	428254
L_45(85)av	988174

Standard: GB/T 29293-2012

C Range: 0 - 360DEG
C Interval: 90.0DEG
Test Speed: HIGH
Temperature:25.3DEG
Test Date:2021-10-18

γ Range: 0 - 180DEG
 γ Interval: 1.0DEG
Test System:EVERFINE GO-2000B_V1 SYSTEM V2.0.351
Humidity:65.0%
Test Distance:9.660m [K=1.0000]
Remarks:

Planar Illuminance Curve



C Range: 0 - 360DEG
 C Interval: 90.0DEG
 Test Speed: HIGH
 Temperature: 25.3DEG
 Test Date: 2021-10-18

γ Range: 0 - 180DEG
 γ Interval: 1.0DEG
 Test System: EVERFINE GO-2000B_V1 SYSTEM V2.0.351
 Humidity: 65.0%
 Test Distance: 9.660m [K=1.0000]
 Remarks:

LUMINOUS DISTRIBUTION INTENSITY DATA

Test:U:24.00V I:0.3775A P:9.060W PF:0 Lamp Flux:22.1887x1 lm		
NAME: LUC-S-RGB	TYPE:LED Strip	WEIGHT:
SPEC.: 9W	DIM.: 1000*10*9(MM)	SERIAL No.: 001
MFR.: Flexfire LEDs, Inc.	SUR.:0..01*1.0*0.002	Shielding Angle:120

Table--1

UNIT: cd

C(DEG) γ (DEG)	0	22.5	45	67.5	90	112.5	135	157.5	180	202.5	225	247.5	270	292.5	315	337.5			
0	4.11	4.11	4.11	4.11	4.11	4.11	4.11	4.11	4.11	4.11	4.11	4.11	4.11	4.11	4.11	4.11			
5	4.13	4.10	4.14	4.11	4.13	4.13	4.11	4.08	4.10	4.11	4.10	4.10	4.08	4.11	4.08	4.10			
10	4.13	4.03	4.14	4.13	4.14	4.13	4.11	4.02	4.02	4.11	4.05	4.05	4.05	4.08	4.04	4.10			
15	4.11	3.94	4.14	4.16	4.17	4.17	4.11	3.93	3.94	4.04	3.99	4.01	3.99	4.01	3.96	4.07			
20	3.96	3.88	4.14	4.22	4.23	4.23	4.11	3.86	3.91	3.94	3.94	3.90	3.93	3.95	3.87	3.95			
25	3.84	3.73	4.14	4.28	4.33	4.29	4.11	3.73	3.68	3.82	3.72	3.81	3.68	3.82	3.75	3.81			
30	3.65	3.62	4.14	4.32	4.43	4.33	4.11	3.58	3.47	3.62	3.57	3.67	3.51	3.68	3.58	3.64			
35	3.42	3.49	4.13	4.35	4.52	4.35	4.05	3.42	3.28	3.40	3.38	3.51	3.21	3.53	3.40	3.43			
40	3.19	3.32	4.11	4.35	4.60	4.35	3.99	3.27	3.01	3.17	3.16	3.28	3.16	3.31	3.18	3.19			
45	2.93	3.15	4.00	4.35	4.68	4.35	3.96	3.07	2.75	2.91	2.93	2.98	2.93	3.08	2.93	2.95			
50	2.67	2.92	3.99	4.35	4.68	4.35	3.85	2.86	2.47	2.65	2.68	2.74	2.67	2.84	2.67	2.67			
55	2.36	2.74	3.89	4.32	4.71	4.30	3.76	2.62	2.18	2.36	2.39	2.53	2.36	2.59	2.37	2.36			
60	2.03	2.51	3.75	4.28	4.71	4.24	3.64	2.41	1.95	2.04	2.09	2.24	1.64	2.34	2.09	2.06			
65	1.70	2.34	3.62	4.22	4.71	4.16	3.50	2.18	1.52	1.72	1.78	1.96	1.46	2.04	1.74	1.73			
70	1.37	2.10	3.48	4.11	4.65	4.04	3.35	1.99	1.18	1.40	1.44	1.66	1.27	1.73	1.46	1.37			
75	0.98	1.98	3.32	4.04	4.57	3.89	3.20	1.75	0.81	1.11	1.18	1.33	1.07	1.45	1.17	1.05			
80	0.72	1.67	3.18	3.89	4.46	3.76	3.03	1.51	0.49	0.73	0.88	0.84	0.97	1.12	0.85	0.74			
85	0.45	1.49	3.01	3.82	4.34	3.34	2.79	1.31	0.21	0.46	0.56	0.53	0.74	0.84	0.53	0.42			
90	0.26	1.34	2.87	3.61	4.16	3.05	2.55	1.07	0.05	0.18	0.20	0.57	0.48	0.56	0.26	0.20			
95	0.21	1.22	2.72	3.46	4.00	2.90	2.00	0.95	0.05	0.05	0.05	0.18	0.08	0.15	0.05	0.05			
100	0.21	1.16	2.58	3.27	3.82	2.90	2.12	0.93	0.05	0.05	0.05	0.05	0.05	0.04	0.05	0.06			
105	0.20	1.04	2.42	3.10	3.61	2.78	2.12	0.86	0.05	0.05	0.05	0.06	0.05	0.04	0.06	0.06			
110	0.20	0.99	2.28	2.94	3.44	2.63	2.05	0.74	0.05	0.05	0.06	0.05	0.05	0.04	0.05	0.05			
115	0.17	0.96	2.09	2.73	3.19	2.47	1.84	0.62	0.05	0.05	0.05	0.05	0.05	0.04	0.03	0.06			
120	0.17	0.88	1.97	2.50	2.96	2.22	1.50	0.51	0.05	0.03	0.05	0.03	0.05	0.04	0.03	0.05			
125	0.17	0.79	1.80	2.29	2.72	2.03	1.32	0.44	0.05	0.06	0.05	0.06	0.05	0.04	0.03	0.05			
130	0.17	0.72	1.66	2.03	2.44	1.80	1.14	0.35	0.05	0.05	0.05	0.05	0.05	0.04	0.03	0.05			
135	0.17	0.70	1.49	1.94	2.21	1.42	0.94	0.33	0.05	0.06	0.05	0.05	0.05	0.04	0.03	0.05			
140	0.15	0.56	1.30	1.60	1.95	1.12	0.79	0.24	0.05	0.06	0.05	0.05	0.05	0.04	0.03	0.05			
145	0.15	0.50	1.15	1.35	1.69	0.92	0.65	0.24	0.05	0.06	0.06	0.05	0.05	0.04	0.03	0.05			
150	0.14	0.49	0.99	1.14	1.40	0.69	0.55	0.24	0.05	0.08	0.06	0.05	0.06	0.04	0.03	0.05			
155	0.12	0.35	0.84	0.95	1.14	0.50	0.49	0.24	0.05	0.09	0.08	0.06	0.06	0.04	0.03	0.05			
160	0.11	0.29	0.68	0.71	0.92	0.34	0.44	0.23	0.05	0.05	0.05	0.05	0.06	0.04	0.03	0.05			
165	0.11	0.24	0.54	0.50	0.66	0.22	0.39	0.21	0.05	0.05	0.06	0.06	0.06	0.04	0.03	0.05			
170	0.09	0.14	0.42	0.35	0.32	0.22	0.35	0.14	0.05	0.05	0.05	0.06	0.06	0.06	0.03	0.05			
175	0.09	0.03	0.29	0.20	0.21	0.10	0.24	0.09	0.05	0.03	0.05	0.06	0.06	0.06	0.08	0.05			
180	0.02	0.03	0.11	0.09	0.09	0.07	0.09	0.09	0.05	0.05	0.05	0.06	0.06	0.04	0.05	0.05			

C Range: 0 - 360DEG
 C Interval: 90.0DEG
 Test Speed: HIGH
 Temperature:25.3DEG
 Test Date:2021-10-18

γ Range: 0 - 180DEG
 γ Interval: 1.0DEG
 Test System:EVERFINE GO-2000B_V1 SYSTEM V2.0.351
 Humidity:65.0%
 Test Distance:9.660m [K=1.0000]
 Remarks: