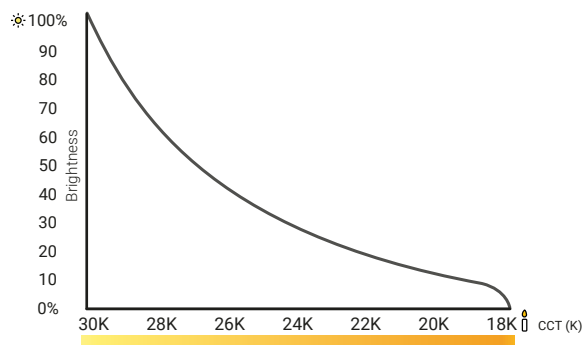




# Outdoor UltraBright™ Sienna Dim-to-Warm LED Strip Light

## Product Data Sheet



**PRECAUTION:** Please read all instructions carefully before installation.

Our Outdoor (IP65) Sienna Dim-to-Warm LED strip provides gentle brightness and modern incandescent-like glow, perfect for accentuating, decorating, and cozying up patios, decks, and more. Its silicone cover ensures easy cleaning and protection against dust and low-pressure water jets. Its versatility ensures vibrant color rendering and seamless transitioning from warm to warmer whites when paired and adjusted with a dimmer.

15 Year  
Warranty



## Product Features

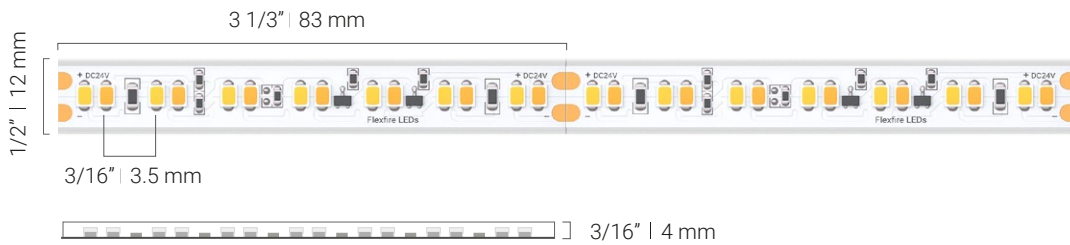
<b>CCT</b>	1800K-3000K
<b>CRI</b>	High CRI of 95+
<b>Voltage</b>	24V DC Input
<b>Brightness</b>	Up to 311 lm/ft (1020 lm/m)
<b>Efficacy</b>	Up to 99 lm/W
<b>LEDs/Foot</b>	51 LEDs/ft (168/meter)
<b>Beam Angle</b>	120° Beam Angle
<b>LED Pitch</b>	3/16" (3.5 mm)
<b>Strip Width</b>	1/2" (12mm)
<b>Cutting Points</b>	3.3" (83 mm)
<b>Max Run Length in Series</b>	16 ft (5 m)
<b>PCB</b>	4 oz copper
<b>LED Size</b>	2835
<b>Adhesive Type</b>	3M 9495 Tape (IP65)
<b>Ambient Temperature</b>	-4°F to 113°F (-20°C to 45°C)
<b>Operating Temperature</b>	-4°F to 149°F (-20°C to 65°C)
<b>Dimmable</b>	Yes
<b>IP Rating</b>	IP65

## Ordering Code

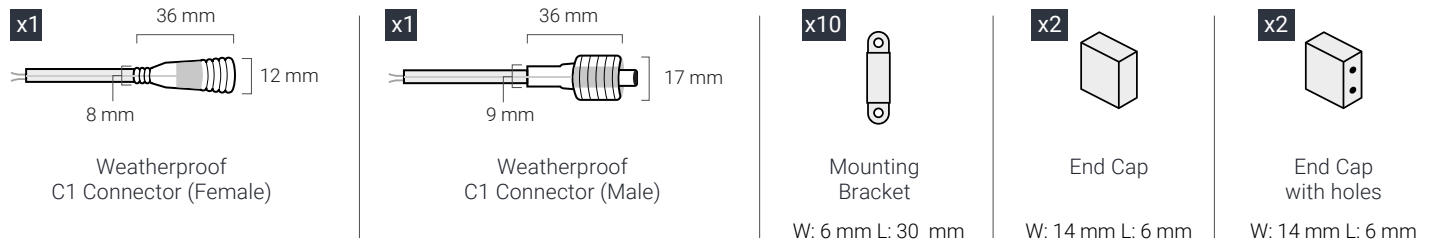


Example: IP65-UB-SNA-DW183090C-24V-16FT

## Dimensions



## Included Accessories:



## Product Specifications

Product SKU	Color* (CCT)	Watts / Foot (Meter)	Lumen / Foot (Meter)	Luminous Efficacy (Lumens / Watt)	CRI	Gamut Score Rg (Color Sat.)	Relative Fidelity Score (RF)	TLCI (Qa)	CQS
IP65-UB-SNA-DW183090C	1800K	0.4 W/ft (1.3 W/m)	20 lm/ft (67 lm/m)	52	95	73	77	54	54
	3000K	3.4 W/ft (11 W/m)	311 lm/ft (1020 lm/m)	99	94	100	92	93	93

\*CCT may be +/-100K but always ordered from same bin and will present no noticeable differences perceived by the human eye.

## Complete Your Setup

Drivers



Controllers & Dimmers



Connectors



Extrusions



## Compatible Drivers (24V)

### Non-dimmable

Power Supply	Diagram	LED Strip Length	Product SKU	Watts	Class 2
<b>Plug-In Power Supply</b> Plug-and-Play Power Supply		1 - 5 ft	24V-WMPS2-1	24W	X
		6 - 22 ft	24V-DPS2-4	96W	X
<b>Mean Well™ HLG</b> Hardwired Power Supply		1 - 15 ft	HLG-60H-24A	60 W	X
		16 - 25 ft	HLG-100H-24A	96 W	X
		26 - 48 ft	HLG-185H-24A	185 W	
		49 - 84 ft	HLG-320H-24A	320 W	
		85 - 158 ft	HLG-600H-24A	600 W	
<b>Mean Well™ LPV</b> Hardwired Power Supply		1 - 15 ft	LPV-60-24	60W	X

### Dimmable

Power Supply	Diagram	LED Strip Length	Product SKU	Watts	Class 2
<b>Zurik® EMLV</b> Hardwired Power Supply		1 - 7 ft	ZRK-EMLV2-30W-24VDC	30W	X
		8 - 15 ft	ZRK-EMLV2-60W-24VDC	60W	X
<b>Zurik® Universal</b> Hardwired Power Supply		1 - 7 ft	ZRK-UNV-30W-24VDC	30W	X
		8 - 15 ft	ZRK-UNV-60W-24VDC	60W	X
		16 - 25 ft	ZRK-UNV-96W-24VDC	96W	X
		26 - 31 ft	ZRK-UNV-120W-24VDC	120W	
		32 - 52 ft	ZRK-UNV-200W-24VDC	200W	
		53 - 79 ft	ZRK-UNV-300W-24VDC	300W	
<b>Lutron® Hi-Lume™ Premier</b> Hardwired Power Supply		1 - 25 ft	L3D0-96W24V-U	96W	X
		Dimming Range: 0.1-100%			

[See Power Supplies Selector](#)

## Compatible Controllers & Dimmers

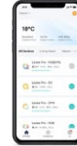
Handheld Remotes



Wall Dimmers



Smart Home Controllers



[See Controllers and Dimmers](#)

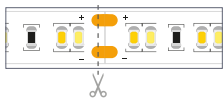
## Compatible Strip Light Connectors

Product SKU	Diagram	Description	Wire Gauge	Amperage Limit*
IP65-GRIP-SC-C1-10-40		Connector with 40" of wire to attach the strip to a power supply or low voltage control.	20 AWG	5 Amps
IP65-GRIP-SC-C2-10-08		Jumper connector with 8" of wire to attach two sections of strip together. Wire allows to go around tight corners.		
IP65-GRIP-SC-C3-10-0		Jumper connector with no wire to attach sections of strip together in a continuous run.		

\*Be sure no more than 5 amps is drawn after any solderless connector. Calculate max length of LED strip to follow the solderless connector based on an amperage draw of 0.14 A/ft (0.46 A/m) at 24 volts.



## Strip Light Connectors Installation



When installing connectors with certain LED Tape Lights such as our Dynamic Tunable White, you will need additional copper pad to work with. You need to cut both solder pads so that the piece to be attached to the connector has more surface area to insert into the connector head.

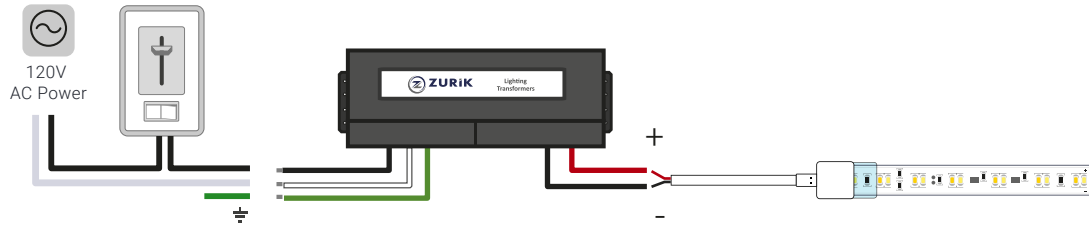
- Cut the LED strip light and the silicone sleeve on the cutting point you want to install the connector.
- Check the polarity to match the positive (+) markings together and negative (-) markings together, and remove 2" of the adhesive tape and its backer from the back of the strip light.
- Apply silicone sealant liberally inside of the silicone sleeve until ensuring it is completely sealed.
- Slide the transparent case of your outdoor IP65 grip connector into the sleeve with the window of the case facing upward, until making sure that the strip is making proper contact.
- Grab your connector and push the metal contacts through the window of the transparent case. Adjust it with pliers until you hear a click, and let the sealant cure according to its own instructions.

## Compatible Aluminum Channel Kits

Diagram	Name	Type	Channel Kit Description	Kit SKU	Included Accessories
	<b>Ion™</b>	 Surface Mount	1 Meter Ion Channel	ION-CH-A-1M	
	<b>Gemini™</b>	 Surface Mount	1 Meter Channel + Clear Cover Kit 2 Meter Channel + Clear Cover Kit 1 Meter Channel + Frosted Cover Kit 2 Meter Channel + Frosted Cover Kit 1 Meter Channel + Matte Cover Kit 2 Meter Channel + Matte Cover Kit	GEM-CH-A-CVR-C-1M GEM-CH-A-CVR-C-2M GEM-CH-A-CVR-F-1M GEM-CH-A-CVR-F-2M GEM-CH-A-CVR-M-1M GEM-CH-A-CVR-M-2M	2 Open End Caps 2 Closed End Caps 4 Mounting Clips
Note: This extrusion only fits the Outdoor Sienna™ Series without connectors.					
	<b>Kepler™</b>	 Surface Mount	1 Meter Channel + Clear Cover Kit 1 Meter Channel + Frosted Cover Kit 1 Meter Channel + Matte Cover Kit	KEP-CH-A-CVR-C-1M KEP-CH-A-CVR-F-1M KEP-CH-A-CVR-M-1M	2 Open End Caps 2 Closed End Caps 4 Mounting Clips
Note: This extrusion only fits the Outdoor Sienna™ Series without connectors.					
	<b>Laika™</b>	 Surface Mount	1 Meter Channel + Clear Cover Kit 1 Meter Channel + Frosted Cover Kit 2 Meter Channel + Frosted Cover Kit	LAI-CH-A-CVR-C-1M LAI-CH-A-CVR-F-1M LAI-CH-A-CVR-F-2M	2 Open End Caps 2 Closed End Caps 4 Mounting Clips
Note: This extrusion only fits the Outdoor Sienna™ Series without connectors.					
	<b>Titan™</b>	 Surface Mount	1 Meter Channel + Clear Cover Kit 1 Meter Channel + Frosted Cover Kit 2 Meter Channel + Frosted Cover Kit 1 Meter Channel + Matte Cover Kit 2 Meter Channel + Matte Cover Kit	TTN-CH-A-CVR-C-1M TTN-CH-A-CVR-F-1M TTN-CH-A-CVR-F-2M TTN-CH-A-CVR-M-1M TTN-CH-A-CVR-M-2M	2 Open End Caps 2 Closed End Caps 4 Mounting Clips 6 Channel Connectors
			1 Meter Channel + 10 Meter Frosted Cover Kit 1 Meter Channel + 10 Meter Matte Cover Kit	TTN-CH-A-CVR-F-10MR TTN-CH-A-CVR-M-10MR	10 Open End Caps 10 Closed End Caps 20 Mounting Clips 30 Channel Connectors
			1 Pendant Kit	TTN-PND-KIT	2 Pendant Mounts with Screws
	<b>Atlas™</b>	 Angled Surface Mount	1 Meter Channel + Clear Cover Kit 1 Meter Channel + Frosted Cover Kit 2 Meter Channel + Frosted Cover Kit 1 Meter Channel + Matte Cover Kit 2 Meter Channel + Matte Cover Kit	ATL-CH-A-CVR-C-1M ATL-CH-A-CVR-F-1M ATL-CH-A-CVR-F-2M ATL-CH-A-CVR-M-1M ATL-CH-A-CVR-M-2M	2 Open End Caps 2 Closed End Caps 4 Mounting Clips
Note: This extrusion only fits the Outdoor Sienna™ Series without connectors.					
	<b>Calypso™</b>	 Recessed	1 Meter Channel + Frosted Cover Kit 2 Meter Channel + Frosted Cover Kit 1 Meter Channel + Matte Cover Kit 2 Meter Channel + Matte Cover Kit	CAL-CH-A-CVR-F-1M CAL-CH-A-CVR-F-2M CAL-CH-A-CVR-M-1M CAL-CH-A-CVR-M-2M	2 Open End Caps 2 Closed End Caps 4 Mounting Clips
			1 Meter Channel + 10 Meter Frosted Cover Kit 1 Meter Channel + 10 Meter Matte Cover Kit	CAL-CH-A-CVR-F-10MR CAL-CH-A-CVR-M-10MR	10 Open End Caps 10 Closed End Caps 20 Mounting Clips 30 Channel Connectors
	<b>Cassini™</b>	 Recessed	1 Meter Channel + Clear Cover Kit 1 Meter Channel + Frosted Cover Kit 2 Meter Channel + Frosted Cover Kit 1 Meter Channel + Matte Cover Kit 2 Meter Channel + Matte Cover Kit	CAS-CH-A-CVR-C-1M CAS-CH-A-CVR-F-1M CAS-CH-A-CVR-F-2M CAS-CH-A-CVR-M-1M CAS-CH-A-CVR-M-2M	2 Open End Caps 2 Closed End Caps 4 Mounting Clips
Note: This extrusion only fits the Outdoor Sienna™ Series without connectors.					

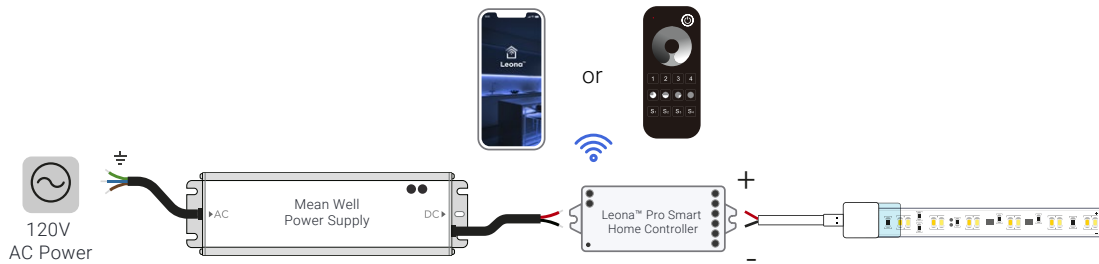
## Wiring Diagrams

### 120V Wall Dimmer



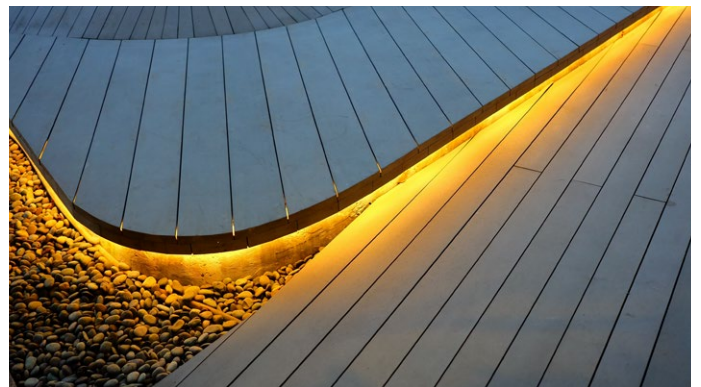
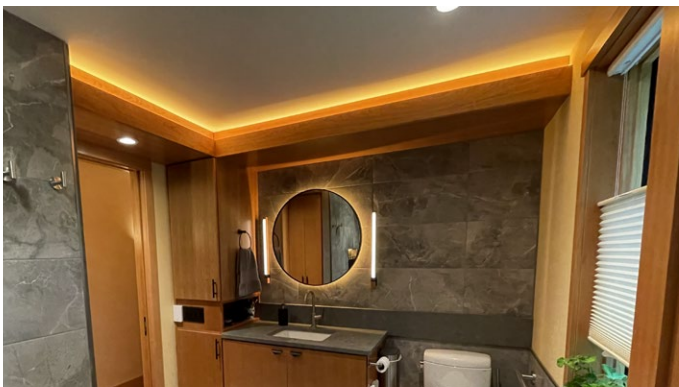
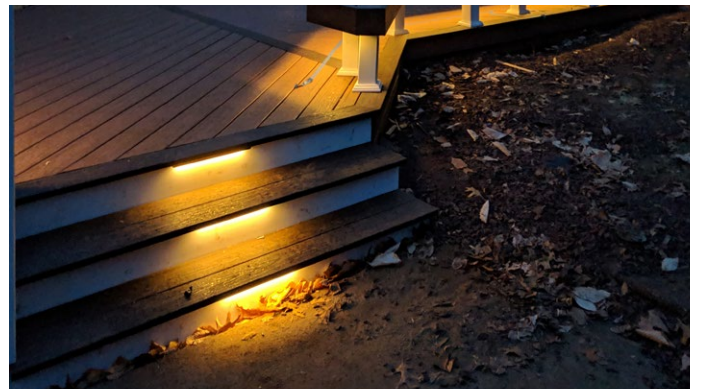
Input		
Green	⏏	Ground Wire
Black	L	Line (hot)
White	N	Neutral
Output		
Black	-	Negative
Red	+	Positive

### In-Line Dimming



Input		
Green/Yellow	⏏	Ground Wire
Brown	L	Line (hot)
Blue	N	Neutral
Output		
Black	-	Negative
Red	+	Positive

## Application Examples



## Safety And Disclosures

**WARNING:** Make all necessary connections before applying power. Do not cut the strip or make connections while power is applied. The adhesive backing is strong; therefore, do not attempt to remove the strip once it has been installed. Failure to follow these recommendations can damage the strip's components and circuitry.

01. Installation must be in accordance with local and national electrical code regulations. To ensure safety and correct installation, our strips are intended to be installed by a qualified, licensed electrician.
02. Only install with a Class 2 DC Constant Voltage LED driver to meet UL requirements.
03. Do not install in an environment where excessive heat may exist.
04. LED strip lights must be handled with care. Excessive handling, bending, and pressure may damage the product, voiding the warranty.
05. Do not secure this product with any kind of staples, nails, or materials that could potentially damage the product in any way. Keep these instructions for future reference.
06. Do not cover this product with any kind of combustible material such as paper, fabrics, etc.
07. Do not install product with the majority of the product unsupported. Allowing the product to be suspended or dangling while installing may cause damage to the PCB due to the weight of the strip and/or spool.
08. Do not install within 5 feet of a swimming pool or spa.
09. Unless otherwise stated as appropriate, do not use the product in direct sunlight or in close proximity to caustic substances such as saltwater, chlorine, bromine, etc.
10. Each maximum run requires a dedicated power feed from the driver. Do not extend beyond the recommended maximum run length.
11. Make sure the appropriate gauge wire is installed between the driver, LEDs, and any dimmers. When choosing wire, calculate voltage drop, maximum amperage rating, and the location ratings on the wire. Improper wire selection and installation could overheat wires, and cause fire.
12. Do not modify the product beyond instructions or warranty will be void.
13. We reserve the right to modify and improve the design of our fixtures without prior notice. Although we try our best to order the same colors every time, due to changes in technology and phosphors over time, we cannot guarantee to match existing installed fixtures for subsequent orders or replacements in regards to product appearance, CCT, or lumen output.

## Warranty Information

### Limited Warranty

This product has a 15 year limited warranty from the date of shipment. This warranty only includes the main product outlined in this specification sheet and does not include the additional accessories that are used as a reference. Complete warranty details for fixtures and additional accessories are available at <https://www.flexfireleds.com/warranties/> within the Policies section. For warranty related questions please contact the product support team at ([support@flexfireleds.com](mailto:support@flexfireleds.com)).

### Consumer's Acknowledgment

Flexfire LEDs, Inc. stands behind its products when they are used properly and according to our specifications. When you purchase our products, you are agreeing to the terms and conditions outlined in our warranty section. We try our best to make recommendations, but the burden of proper installation, design, and maintenance relies on the purchaser. This limited warranty does not include product failures that are the result of: Not using a voltage regulated power supply to connect the LED product or controls; Connecting LED products to the wrong output voltage; Improper connection of power supplies, LED products, or controls; Connecting LED products or controls directly to any AC power source if they are stated for DC only input; Connecting power supplies backwards to an AC power source; Products used in an inappropriate location or in environmental conditions (temperature, humidity, moisture, etc.) outside the normal specified range; Water damage to products not specifically sold as waterproof products; Electrical power surges and spikes; Damage from hail, flooding, tornado, fire, wind, earthquake, lightning, electrical storm, or any other natural disasters or "force majeure" incidences; Damage caused by a vehicle or other accident; Damage caused when transporting the item; Damage to any products that were modified by the user, used for purposes other than as intended or directed, or connected to LED systems or components not purchased from Flexfire LEDs; Products that have been subjected to misuse, mishandling, misapplication or accident. Products used in connection with any components, devices or systems other than those explicitly approved as compatible with Company's products and listed on Company's website. Excessive wear and tear and/or physical or accidental abuse, loss, or theft. Improper repairs or warranty services performed by someone other than Flexfire LEDs will void this warranty.



**Toll Free Number:**  
1-844-353-9347



**Local Number:**  
(925) 273-9080



[info@flexfireleds.com](mailto:info@flexfireleds.com)



**FLEXFIRELEDs**

[www.flexfireleds.com](http://www.flexfireleds.com)