

PRODUCT DATA SHEET

ColorBright™ Dynamic Tunable White Series



15 Year
Warranty



Description

Our weatherproof ColorBright™ Dynamic Tunable White LED strip light is the perfect lighting solution for projects that require a very specific shade of white light or for projects where the color of white will need the ability to change from time to time. This LED strip light was produced with alternating colored LEDs on the circuit board and color temperature options between 2400K-3000K, 2700K-4200K, and 3000K-6200K, so you can select the perfect color of white using a remote control.

The ip65 silicone cover protection not only allows the light to be protected from a range of outdoor elements and withstand jets of water, but also makes them extremely easy to clean.

Product Features

- Control strips to produce any color of white between 2400K-3000K, 2700K-4200K and 3000K-6200K
- High CRI of 80+
- Highest Brightness - Up to 285 Lumen/ft (937/Meter)
- Fully dimmable
- Highest quality components and premium packaged 3528 LEDs
- Single BIN LED selection to ensure color consistency (3-Step MacAdam)
- Thermally Resistant 3M VHB 9731 adhesive for long lasting bond
- 120° Beam Angle
- Efficiency up to 98 lm/W
- Only 3/8" (10mm) strip width
- Short LED pitch of 5/16" (8mm)
- 24V DC Input
- Can be cut every 4" (100mm)
- 36 LEDs / Foot (120 / Meter)
- Thick double layer 2 oz copper PCB for excellent thermal management
- Operating Temperature -4°F to +104°F (-20°C to 40°C)
- Maximum Length in Series 32ft 10in (10 Meters)

Product Specifications

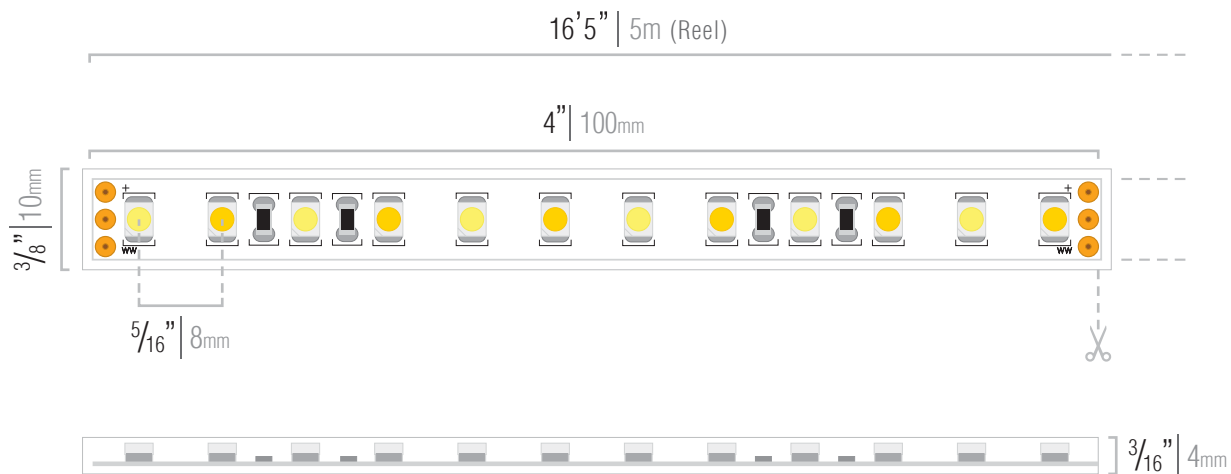
Product SKU	Color setting on remote	Average Lumen / foot (Meter)	CRI
IP65-CB-DYN2430-XXV-16FT	2700K	132 lm/ft (432 lm/m)	83
IP65-CB-DYN2742-XXV-16FT	3500K	285 lm/ft (937 lm/m)	82
IP65-CB-DYN3062-XXV-16FT	4200K	266 lm/ft (871 lm/m)	83

Ordering Code

INDOOR

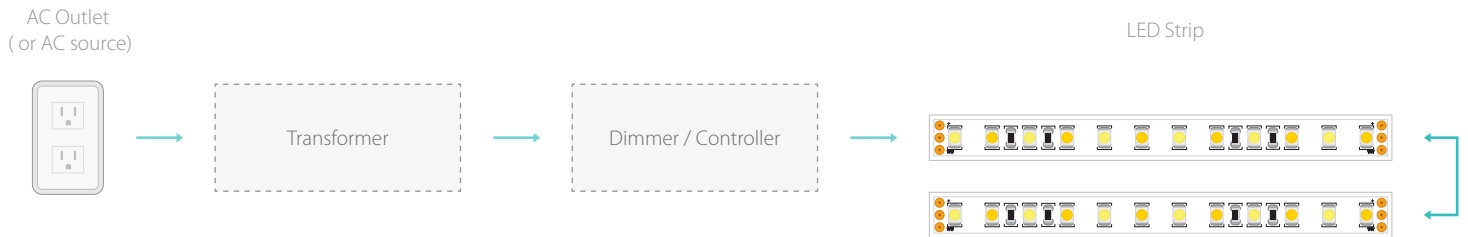
IP Protection	Brand	CCT	Voltage	Length
IP65 - Weatherproof	CB - ColorBright™	DYN2430 DYN2742 DYN3062	24V	16 FT - 16 ft Reel

Dimensions

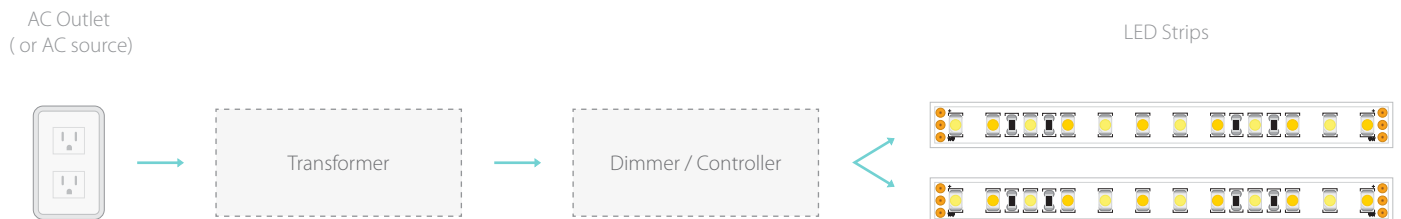


Example Installation and Layout

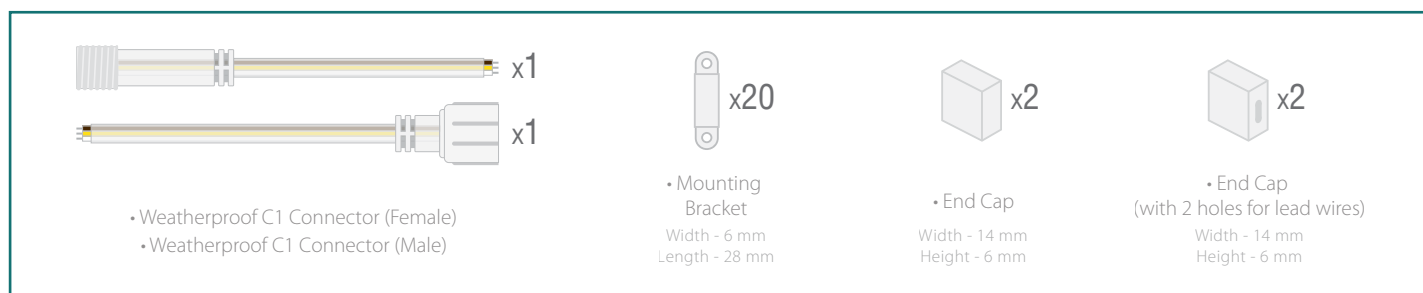
IN SERIES



IN PARALLEL

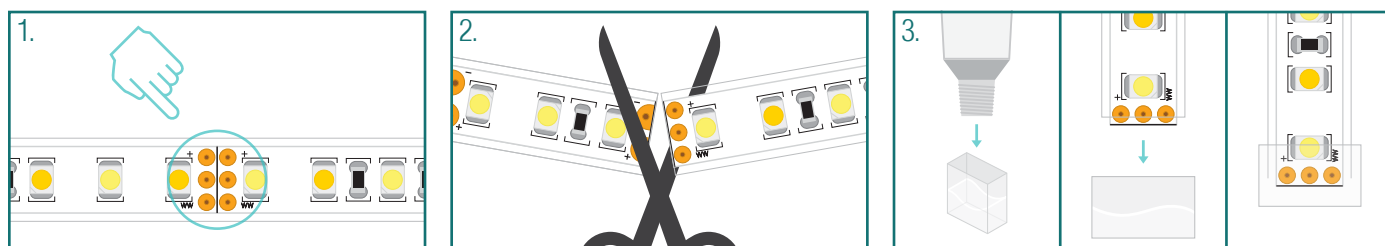


Included Accessories



Resealing Outdoor Strips

Sealing Outdoor Strips with End Caps

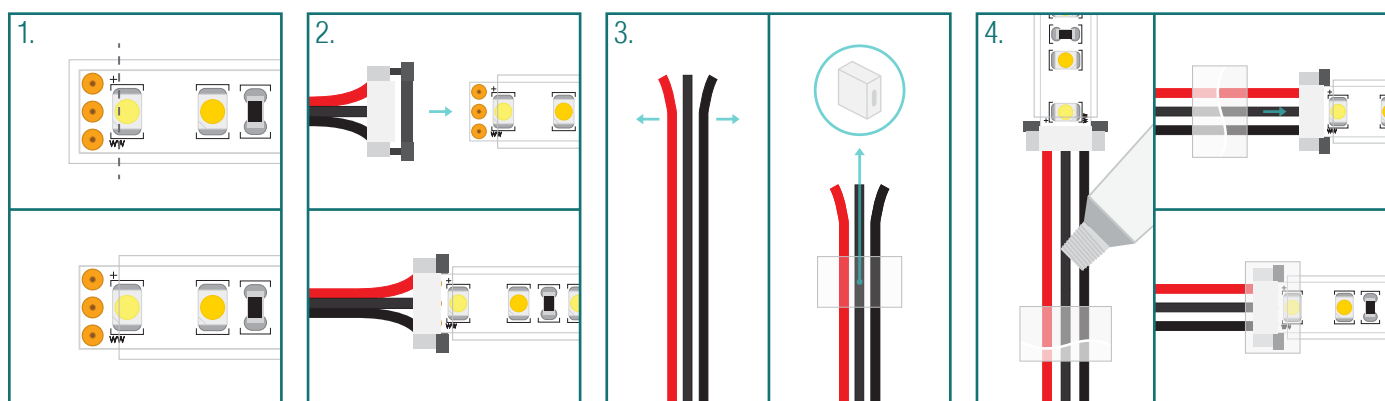


1. Find the cut line on the strip (between the solder pads).

2. Carefully cut the strip on the cut line.

3. Fill an end cap (without holes) with sealant and slide it over the end of the strip until it fits snugly.

Sealing Outdoor Strips with End Caps and a Solderless Connector



1. Cut away a small portion of the silicone sleeve to access the solder pads you will be connecting to.

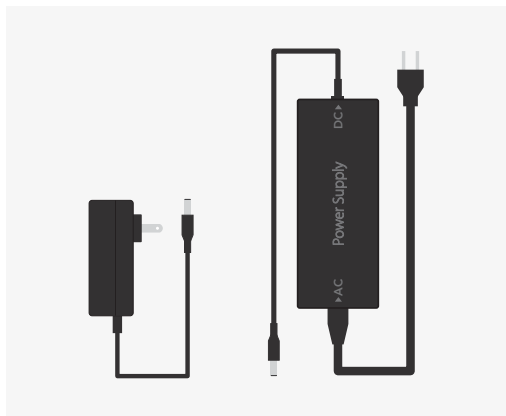
2. Carefully insert the strip into the connector and ensure it fits snugly.

3. Spread the wires on the connector and slide them through the hole in the end cap.

4. Fill the end cap (with holes) with sealant and slide carefully over the connector at the end of the strip.

Compatible Drivers (24v only)

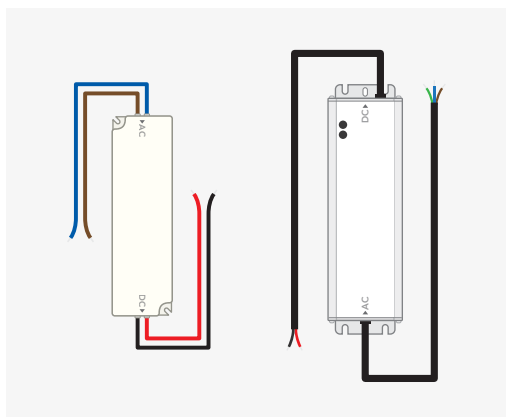
Wall Mounted Power Supply / Desktop Power Supply



24V SKU

24V-WMPS-1
24V-DPS-2.5
24V-DPS-4
24V-DPS-5

Mean Well



24V SKU

LPV-20-24	HLG-120H-24A
HLG-40H-24A	HLG-185H-24A
HLG-60H-24A	HLG-240H-24A
HLG-80H-24BL	HLG-320H-24A
HLG-100H-24A	HLG-600H-24A

Compatible Aluminum Extrusions

► GIZA Anodized Extrusion

(SKU: KL-B5556ANODA-1m)



Covers

- HS 22 Clear Cover (SKU: KL-17022-1m)
- HS 22 Frosted Cover (SKU: KL-17011-1m)

End Caps

- GIZA End Cap without Wire Hole (SKU: KL-24007)

Mounting Accessories

- GP Surface Spring (SKU: KL-00293)
 - minimum surface thickness 10mm (3/8")
- Mounting Bracket (SKU: KL-24143)

► KLUS KOPRO Anodized Extrusion

(KL-B6367ANODA-1m)



Covers

- KOPRO-L Cover (SKU: KL-17092-1)

End Caps

- KOPRO-L End Cap (SKU: KL-24116)

Mounting Accessories

- GP Surface Spring (SKU: KL-00293)
 - minimum surface thickness 10mm (3/8")
- Mounting Bracket (SKU: KL-24143)

► KLUS LIPOD Anodized Extrusion

(SKU: KL-B5554ANODA-1m)



Covers

- HS 22 Clear Cover (SKU: KL-17022-1m)
- LIGER 22 Frosted Cover (SKU: KL-17032-1m)

End Caps

- LIPOD-MET End Cap (SKU: KL-24051)

Mounting Accessories

- GP Surface Spring (SKU: KL-00293)
 - minimum surface thickness 10mm (3/8")
- Mounting Bracket (SKU: KL-24143)

Safety And Disclosures

1. Installation must be in accordance with local and national electrical code regulations.
2. To ensure safety and correct installation, our strips are intended to be installed by a qualified, licensed electrician.
3. Only install with a Class 2 DC Constant Voltage LED driver to meet UL requirements.
4. Do not install in environment where excessive heat may exist.
5. LED strip lights must be handled with care. Excessive handling, bending, and pressure may damage the product, voiding the warranty.
6. Do not install indoor LED tape light products in outdoor / wet location environments. Only use copper wiring. Use wires rated for at least 176°F (80°C) and certified for use with external connection of electrical equipment.
7. Each maximum run requires a dedicated power feed from the driver. Do not extend beyond the recommended maximum run length.
8. Make sure the appropriate gauge wire is installed between driver, LEDs, and any dimmers. When choosing wire, calculate voltage drop, maximum amperage rating, and the location ratings on the wire. Improper wire selection and installation could overheat wires, and cause fire.
9. Do not modify the product beyond the instructions or the warranty will be void.
10. We reserve the right to modify and improve the design of our fixtures without prior notice. Although we try our best to order the same colors every time, due to changes in technology and phosphors over time, we cannot guarantee to match existing installed fixtures for subsequent orders or replacements in regards to product appearance, CCT, or lumen output.

Warranty Information

Limited Warranty

This product has a 15 year limited warranty from the date of shipment. This warranty only includes the main product outlined in this specification sheet and does not include the additional accessories that are used as a reference. Complete warranty details for fixtures and additional accessories are available at <https://www.flexfireleds.com/warranties/> within the Policies section. For warranty related questions please contact product support team at (support@flexfireleds.com).

Consumer's Acknowledgment

Flexfire LEDs, Inc. stands behind its products when they are used properly and according to our specifications. When you purchase our products, you are agreeing to the terms and conditions outlined in our warranty section. We try our best to make recommendations, but the burden of proper installation, design, and maintenance relies on the purchaser.

This limited warranty does not include product failures that are the result of:

Not using a voltage regulated power supply to connect the LED product or controls; Connecting LED products to the wrong output voltage; Improper connection of power supplies, LED products, or controls; Connecting LED products or controls directly to any AC power source if they are stated for DC only input; Connecting power supplies backwards to an AC power source; Products used in an inappropriate location or in environmental conditions (temperature, humidity, moisture, etc.) outside the normal specified range; Water damage to products not specifically sold as waterproof products; Electrical power surges and spikes; Damage from hail, flooding, tornado, fire, wind, earthquake, lightning, electrical storm, or any other natural disasters or "force majeure" incidences; Damage caused by a vehicle or other accident; Damage caused when transporting the item; Damage to any products that were modified by the user, used for purposes other than as intended or directed, or connected to LED systems or components not purchased from Flexfire LEDs; Products that have been subjected to misuse, mishandling, misapplication or accident. Products used in connection with any components, devices or systems other than those explicitly approved as compatible with Company's products and listed on Company's website. Excessive wear and tear and/or physical or accidental abuse, loss, or theft. Improper repairs or warranty services performed by someone other than Flexfire LEDs will void this warranty.