

Outdoor IP65 ColorBright™

Vivid Color Series

Product Data Sheet



15 Year
Warranty



Description

The Outdoor ColorBright™ Vivid Color LED strip light comes as a 16ft 5in reel of linear LED lights. LED chips that emit a single vivid color are mounted on a flexible strip of printed circuit board (PCB) with a strong 3M adhesive backing. The IP65 silicone cover protection not only allows the lights to be protected from a range of outdoor elements and withstand jets of water, but also makes them extremely easy to clean. The high lumen output, excellent color consistency, and flexible design of LED strips means the lights can add a bright and beautiful vivid color accent in almost any space you can imagine.

Product Features

- Double density LEDs for high brightness output
- Fully dimmable
- Highest quality components and premium packaged 3528 LEDs
- Single BIN LED selection to ensure color consistency (3-Step MacAdam)
- 3M 9731 adhesive for a strong bond to the weatherproof silicone sleeve
- 120° Beam Angle
- Efficiency up to 92 Lumens/W
- Only 3/8" (10mm) strip width
- Short LED pitch of 5/16" (8mm)
- 12V DC Input (24V available by special order)
- Can be cut every 1" (25.4mm)
- 36 LEDs / Foot (120/Meter)
- Thick double layer 2 oz copper PCB for excellent thermal management
- Operating Temperature -4°F to +104°F (-20°C to 40°C)
- IP65 Rated with non-yellowing and UV resistant silicone sleeve

Product Specifications

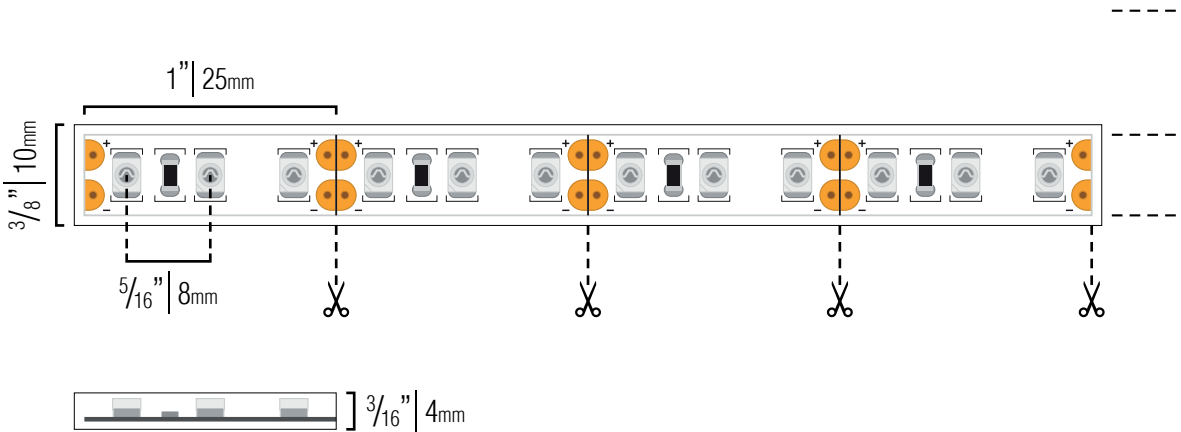
| Product SKU | Color (CCT) | Wavelength (nm) | Watts / foot (Meter) | Lumin. Flux (Meter) | Luminous efficacy (Lumens / Watt) |
|-------------|-------------|-----------------------|----------------------|----------------------|-----------------------------------|
| IP65-CB-G | Green | 515-525nm | 2.9 W/ft (9.6 W/m) | 134 lm/ft (440 lm/m) | 46 |
| IP65-CB-R | Red | 615-630nm | 2.9 W/ft (9.6 W/m) | 91 lm/ft (300 lm/m) | 31 |
| IP65-CB-B | Blue | 465-475nm | 2.9 W/ft (9.6 W/m) | 55 lm/ft (180 lm/m) | 19 |
| IP65-CB-AM | Amber | 575nm (1500-1700K) | 2.9 W/ft (9.6 W/m) | 263 lm/ft (862 lm/m) | 91 |

Ordering Code

| IP Protection | Brand | Color | Voltage | Length |
|--|--------------------------------|---|------------------------------------|-----------------------------|
| <div>IP65 - Weatherproof</div> <div>IP68* - Waterproof</div> | <div>CB- ColorBright</div> | <div>G - Green</div> <div>R - Red</div> <div>B - Blue</div> <div>AM - Amber</div> | <div>12V -</div> <div>24V* -</div> | <div>16FT - 16ft Reel</div> |

* Special Order

Dimensions

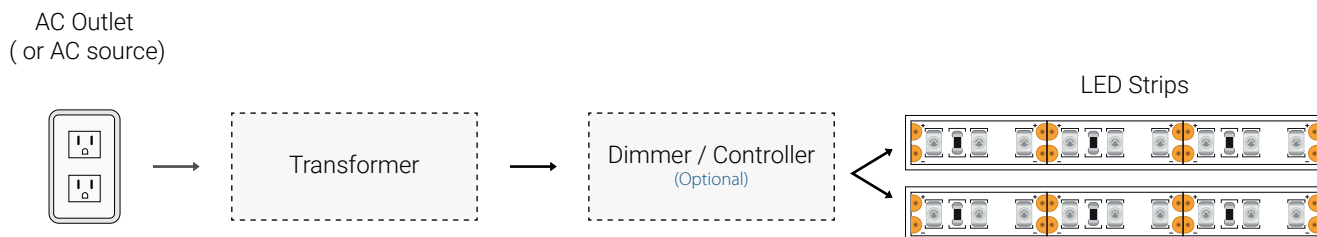


Example Installation and Layout

In Series

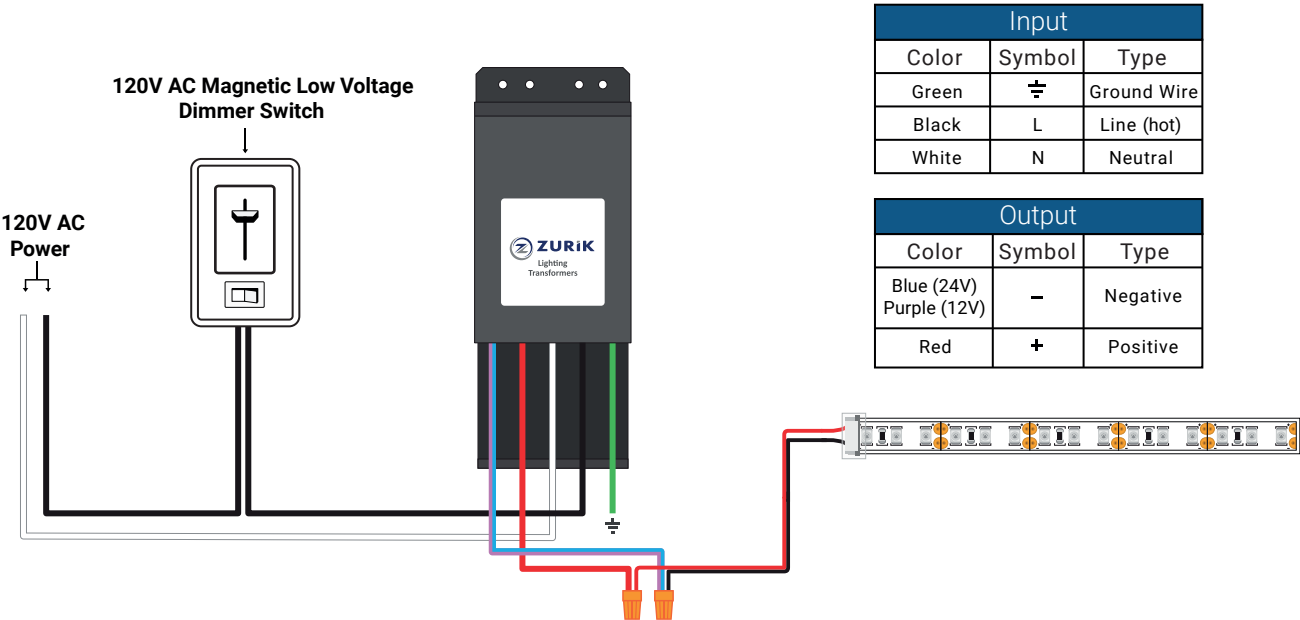


In Parallel

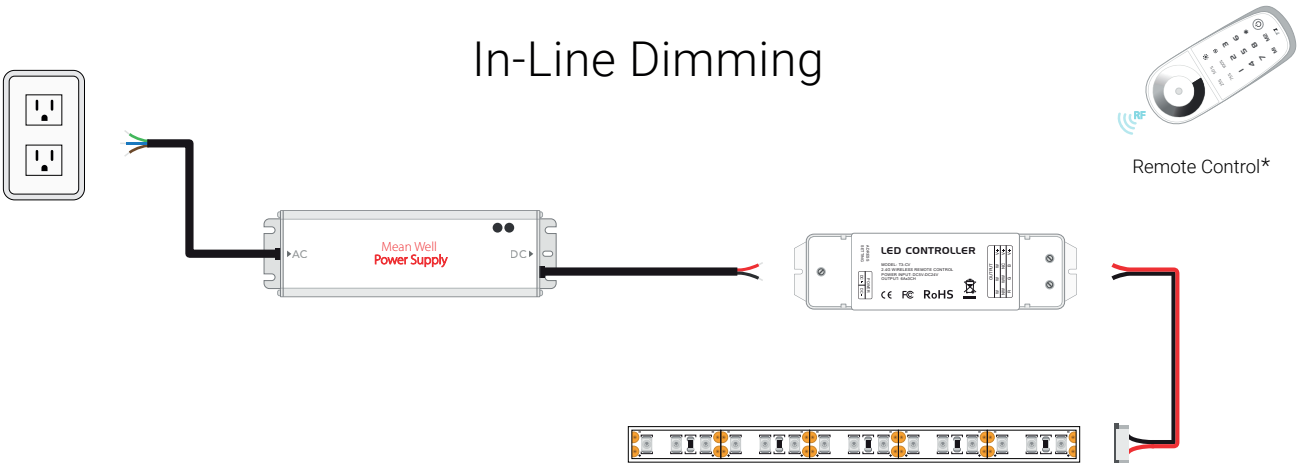


Dimming Options

Lutron Style Wall Dimmer

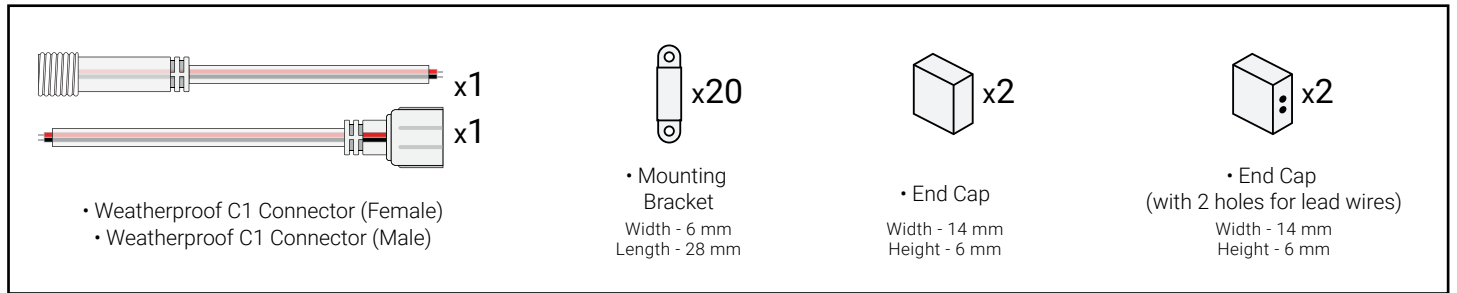


In-Line Dimming



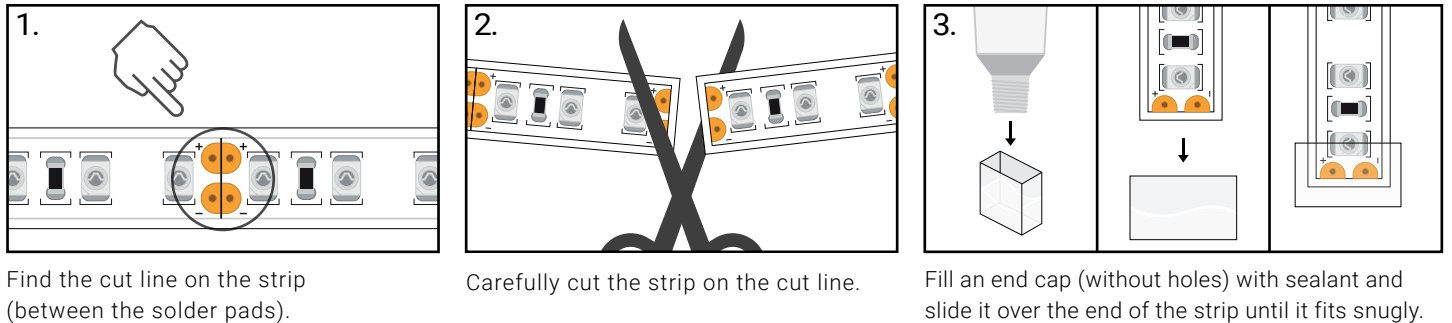
*Remote Control (SKU: SC-MZ-CTRL) can be paired to 8 total receivers. Multiple remotes cannot be paired to a single receiver (max 1)

Included Accessories

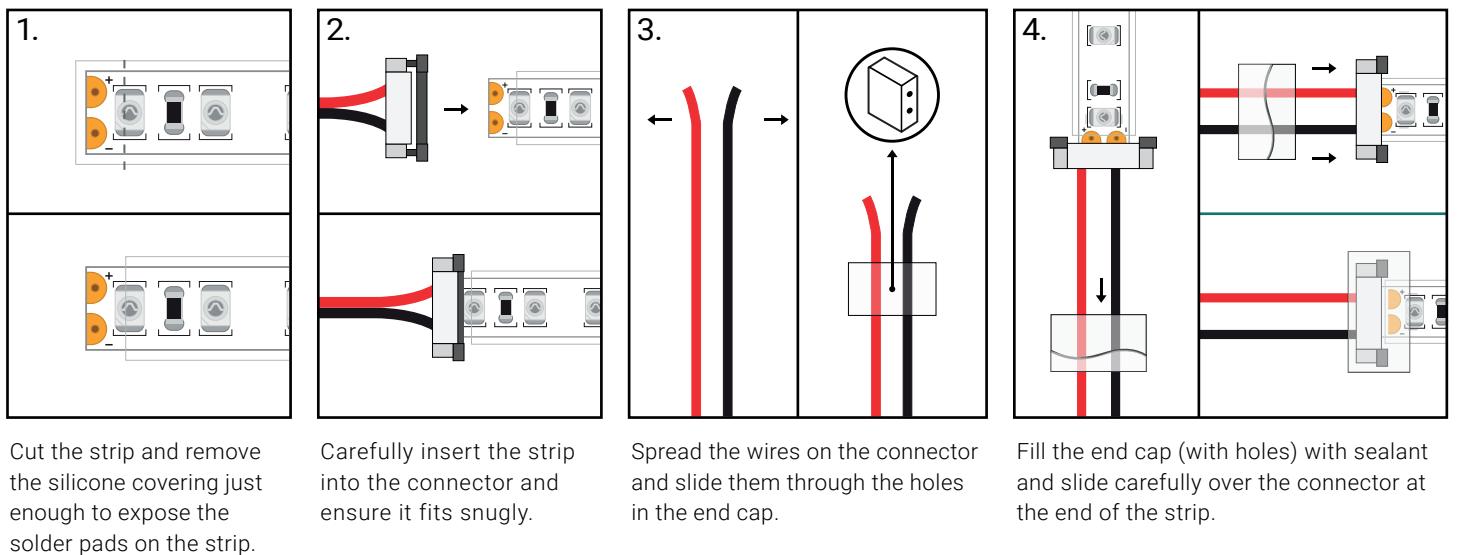


Resealing Outdoor Strips

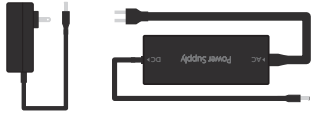


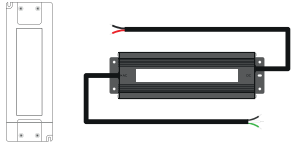

Sealing Outdoor Strips with End Caps



Sealing Outdoor Strips with End Caps and a Solderless Connector



Compatible Drivers (12V)

| | Power Supply | LED Strip Length | SKU | Diagram |
|--------------|--|--|--|---|
| Non-Dimmable | Wall Mounted Power Supply / Desktop Power Supply | 1 - 3 ft | 12V-WMPS-1 |  |
| | | 4 - 6 ft | 12V-DPS-2 | |
| | | 7 - 13 ft | 12V-DPS-4 | |
| | | 14 - 20 ft | 12V-DPS-6 | |
| | | 21 - 26 ft | 12V-DPS-8 | |
| | Mean Well™ HLG | 1 - 11 ft 12 - 17 ft 18 - 35 ft 36 - 43 ft 44 - 53 ft 54 - 74 ft 75 - 140 ft | HLG-40H-12A HLG-80H-12A HLG-120H-12A HLG-150H-12A HLG-240H-12A HLG-320H-12A HLG-600H-12A |  |
| Dimmable | Mean Well™ LPV | 1 - 6 ft 7 - 10 ft 11 - 17 ft 18 - 28 ft | LPV-20-12 LPV-35-12 LPV-60-12 LPV-100-12 |  |
| | Zurik® EMLV | 1 - 8 ft 9 - 17 ft 18 - 35 ft 36 - 58 ft 59 - 88 ft | ZRK-EMLV2-30W-12VDC ZRK-EMLV2-60W-12VDC ZRK-EMLV2-120W-12VDC-J ZRK-EMLV2-200W-12VDC-J ZRK-EMLV2-300W-12VDC-J |  |
| | | 1 - 7 ft 18 - 34 ft 35 - 60 ft 61 - 95 ft | ZRK-UNV-60W-12VDC ZRK-UNV-120W-12VDC ZRK-UNV-200W-12VDC ZRK-UNV-300W-12VDC | |
| | | | | |
| | | | | |
| | | | | |
| | Zurik® Universal Drivers | | |  |

Compatible Aluminum Extrusions

KLUS GIZA Anodized Extrusion (SKU: KL-B5556ANODA-1m)



Covers

- KLUS - HS 22 Clear Cover (SKU: KL-17022-1m)
- KLUS LIGER 22 Frosted Cover (SKU: KL-17032-1m)

End Caps

- KLUS GIZA End Cap (SKU: KL-24007)

Mounting Accessories

- KLUS GP Surface Spring (SKU:KL-00293)
- KLUS Mounting Bracket (SKU: KL-24143)

Safety And Disclosures

1. Installation must be in accordance with local and national electrical code regulations.
2. To ensure safety and correct installation, our strips are intended to be installed by a qualified, licensed electrician.
3. Only install with a Class 2 DC Constant Voltage LED driver to meet UL requirements.
4. Do not install in environment where excessive heat may exist.
5. LED strip lights must be handled with care. Excessive handling, bending, and pressure may damage the product, voiding the warranty.
6. Do not install indoor LED tape light products in outdoor / wet location environments. Only use copper wiring. Use wires rated for at least 176°F (80°C) and certified for use with external connection of electrical equipment.
7. Each maximum run requires a dedicated power feed from the driver. Do not extend beyond the recommended maximum run length.
8. Make sure the appropriate gauge wire is installed between driver, LEDs, and any dimmers. When choosing wire, calculate voltage drop, maximum amperage rating, and the location ratings on the wire. Improper wire selection and installation could overheat wires, and cause fire.
9. Do not modify product beyond instructions or warranty will be void.
10. We reserve the right to modify and improve the design of our fixtures without prior notice. Although we try our best to order the same colors every time, due to changes in technology and phosphors over time, we cannot guarantee to match existing installed fixtures for subsequent orders or replacements in regards to product appearance, CCT, or lumen output.

Warranty Information

Limited Warranty

This product has a 15 year limited warranty from the date of shipment. This warranty only includes the main product outlined in this specification sheet and does not include the additional accessories that are used as a reference. Complete warranty details for fixtures and additional accessories are available at <https://www.flexfireleds.com/warranties/> within the Policies section. For warranty related questions please contact product support team at (support@flexfireleds.com).

Consumer's Acknowledgment

Flexfire LEDs, Inc. stands behind its products when they are used properly and according to our specifications. When you purchase our products, you are agreeing to the terms and conditions outlined in our warranty section. We try our best to make recommendations, but the burden of proper installation, design, and maintenance relies on the purchaser.

This limited warranty does not include product failures that are the result of:

Not using a voltage regulated power supply to connect the LED product or controls; Connecting LED products to the wrong output voltage; Improper connection of power supplies, LED products, or controls; Connecting LED products or controls directly to any AC power source if they are stated for DC only input; Connecting power supplies backwards to an AC power source; Products used in an inappropriate location or in environmental conditions (temperature, humidity, moisture, etc.) outside the normal specified range; Water damage to products not specifically sold as waterproof products; Electrical power surges and spikes; Damage from hail, flooding, tornado, fire, wind, earthquake, lightning, electrical storm, or any other natural disasters or "force majeure" incidences; Damage caused by a vehicle or other accident; Damage caused when transporting the item; Damage to any products that were modified by the user, used for purposes other than as intended or directed, or connected to LED systems or components not purchased from Flexfire LEDs; Products that have been subjected to misuse, mishandling, misapplication or accident. Products used in connection with any components, devices or systems other than those explicitly approved as compatible with Company's products and listed on Company's website. Excessive wear and tear and/or physical or accidental abuse, loss, or theft. Improper repairs or warranty services performed by someone other than Flexfire LEDs will void this warranty.