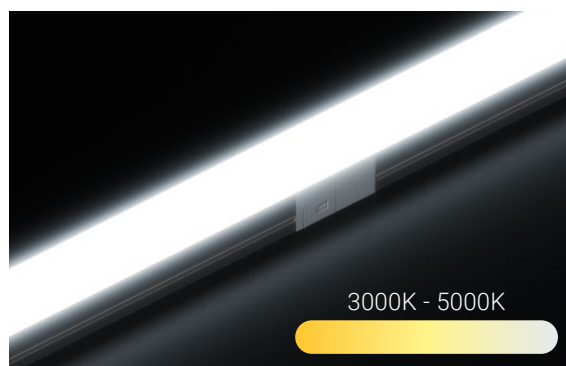
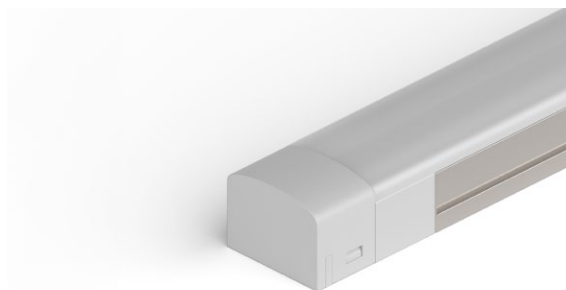




# ClickBright™ Tunable White LED Light Bar

## Product Data Sheet



**5 Year  
Warranty**



### PRECAUTION:

Please read all instructions carefully before installation.

Our ClickBright™ Tunable White LED Light Bars deliver unmatched versatility for mid-output task or accent lighting projects. These bars provide smooth transitions between whites using an in-app slider or preset CCT steps with a sensor. With a built-in cover that prevents light spots and a linkable design of up to 16ft, they are the ultimate under-cabinet, closet, or shelving solution.

## Product Features

<b>CCT</b>	3000K-5000K
<b>CRI</b>	93
<b>R9 and R13 Values</b>	Up to 74 (R9) and 99 (R13)
<b>Voltage</b>	24V DC Input
<b>Brightness</b>	Up to 329 lm per 10" fixture Up to 534 lm per 20" fixture
<b>Efficacy</b>	Up to 107 lm/W
<b>Beam Angle</b>	120° Beam Angle
<b>Light Bar Width</b>	21/32" (16.5 mm)
<b>Max Run Length in Series</b>	16 ft (5 m)
<b>LED Size</b>	2835
<b>Ambient Temperature</b>	32°F to 104°F (0°C to 40°C)
<b>Operating Temperature</b>	32°F to 122°F (0°C to 50°C)
<b>Dimmable</b>	Yes
<b>IP Rating</b>	IP20

Ordering Code

Brand

LB

UltraBright™

-

CCT

TW3050K

3000K-5000K

-

Voltage

24V

-

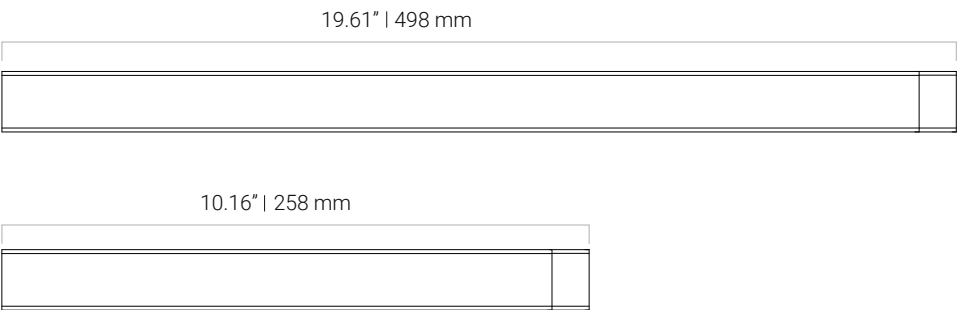
Length

10IN - 10.16" bar  
20IN - 19.61" bar

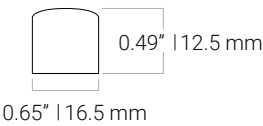
Example: LB-TW3050K-24V-10IN

Dimensions

Top profile:



Side profile:



Included Accessories:



X2  
Mounting  
Brackets



X2  
Mounting  
Screws

Product Specifications

Product SKU	Length	Color* (CCT)	Watts/Fixture	Lumens/Fixture	Luminous Efficacy (Lumens / Watt)	CRI	Gamut Score Rg	Relative Fidelity Score (RF)	TLCI
LB-TW3050K	10 in	3000K	3.5W	270 lm	86 lm/W	93	99	89	92
		4000K	3.5W	313 lm	107 lm/W	94	98	87	93
		5000K	3.5W	329 lm	94 lm/W	91	94	82	90
	20 in	3000K	6.5W	423 lm	83 lm/W	93	99	89	93
		4000K	6.5W	487 lm	102 lm/W	94	97	87	93
		5000K	6.5W	534 lm	91 lm/W	91	94	82	90

\*CCT may be +/-100K but always ordered from same bin and will present no noticeable differences perceived by the human eye.

## Complete Your Setup

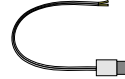
☒ Drivers



☒ Controllers & Dimmers



☒ Accessories



## Compatible Drivers (24V)

### Non-dimmable

Power Supply	Diagram	Total Length	Product SKU	Watts	Class 2
<b>Plug-In Power Supply</b> Plug-and-Play Power Supply		1 - 4 ft	24V-WMPS2-1	24 W	X
		5 - 19 ft	24V-DPS2-4	96 W	X
<b>Mean Well™ HLG</b> Hardwired Power Supply		1 - 13 ft	HLG-60H-24A	60 W	X
		13 - 21 ft	HLG-100H-24A	96 W	X
		22 - 41 ft	HLG-185H-24A	185 W	
		42 - 72 ft	HLG-320H-24A	320 W	
		73 - 135 ft	HLG-600H-24A	600 W	
<b>Mean Well™ LPV</b> Hardwired Power Supply		1 - 12 ft	LPV-60-24	60W	X

### Dimmable

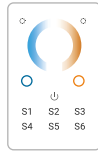
Power Supply	Diagram	Total Length	Product SKU	Watts	Class 2
<b>Zurik® EMLV</b> Hardwired Power Supply		1 - 6 ft	ZRK-EMLV2-30W-24VDC	30W	X
		7 - 13 ft	ZRK-EMLV2-60W-24VDC	60W	X
<b>Zurik® Universal</b> Hardwired Power Supply		1 - 6 ft	ZRK-UNV-30W-24VDC	30 W	X
		7 - 13 ft	ZRK-UNV-60W-24VDC	60 W	X
		14 - 21 ft	ZRK-UNV-96W-24VDC	96 W	X
		22 - 27 ft	ZRK-UNV-120W-24VDC	120 W	
		28 - 45 ft	ZRK-UNV-200W-24VDC	200 W	
		46 - 67 ft	ZRK-UNV-300W-24VDC	300 W	
		1 - 42 ft (up to 21 ft/output)	ZRK-UNV-C192W-24VDC	192 W	X
		43 - 84 ft (up to 21 ft/output)	ZRK-UNV-C384W-24VDC	384 W	X
<b>Lutron® Hi-Lume™ Premier</b> Hardwired Power Supply		1 - 21 ft	L3D0-96W24V-U	96W	X
		Dimming Range: 0.1-100%			

## Compatible Controllers & Dimmers

Handheld Remotes



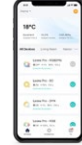
DMX Controls



Wall Dimmers



Smart Home Controllers



## Compatible Connectors & Accessories

Product SKU	Diagram	Description	Wire Gauge
LB-CS-40IN		DC power connector with sensor, 40 inches.	18 AWG
LB-C-40IN		Hardwire power connector with bare lead wires, 40 inches.	18 AWG
LB-J-40IN		Jumper connector for gaps in the setup, 40 inches.	18 AWG
LB-CRN-H		Adjustable horizontal corner connector for 80-280 degree turns.	-
LB-CRN-V		Vertical corner connector for 90 degree turns.	-
LB-MB		45 degree angle mounting brackets with screws, set of 2.	-

\*The power connector with bare wire leads has 3 wires.

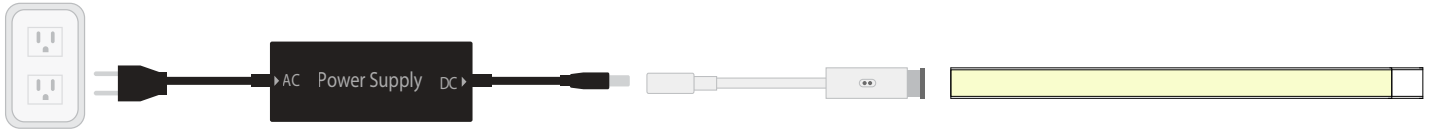
V+: Wire with writing

WW (-): Wire with dashes

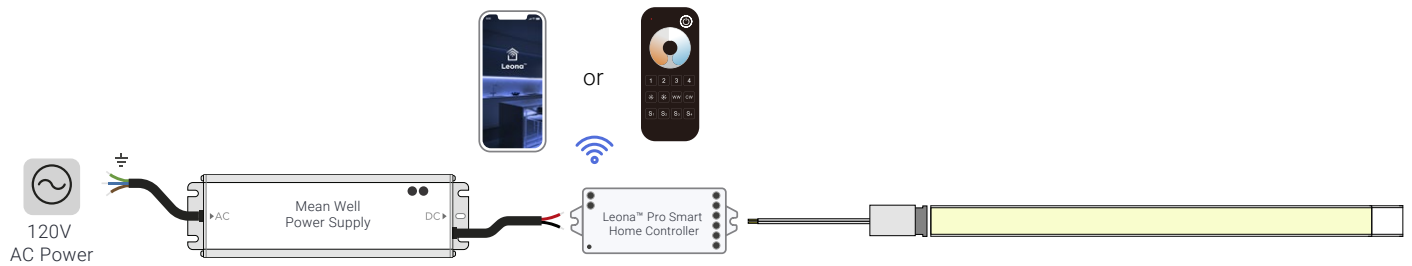
CW (-): Solid white wire

## Wiring Diagrams

### DC Power Connector with Sensor



### Power Connector with Bare Wire Leads



## Application Examples



## Safety And Disclosures

01. Installation must be in accordance with local and national electrical code regulations. To ensure safety and correct installation, our lighting products are intended to be installed by a qualified, licensed electrician.
02. Do not install in an environment where excessive heat may exist.
03. Do not bend, step on, or subject to pressure or flexing. Do not mount on uneven surfaces.
04. Do not cover the light or allow the light to be in contact with materials that could pose a fire hazard.
05. Suitable for indoor use, dry locations only.  
Each maximum run requires a dedicated power feed from the driver.
06. Do not extend beyond the recommended maximum run length.
07. Use a soft, dry cloth for cleaning.
08. Please use the specific connectors and accessories for this product.
09. Do not modify the product beyond instructions or warranty will be void.
10. We reserve the right to modify and improve the design of our fixtures without prior notice. Although we try our best to order the same colors every time, due to changes in technology and phosphors over time, we cannot guarantee to match existing installed fixtures for subsequent orders or replacements in regards to product appearance, CCT, or lumen output.

## Warranty Information

### Limited Warranty

This product has a 5 year limited warranty from the date of shipment. This warranty only includes the main product outlined in this specification sheet and does not include the additional accessories that are used as a reference. Complete warranty details for fixtures and additional accessories are available at <https://www.flexfireleds.com/warranties/> within the Policies section. For warranty related questions please contact the product support team at ([support@flexfireleds.com](mailto:support@flexfireleds.com)).

### Consumer's Acknowledgment

Flexfire LEDs, Inc. stands behind its products when they are used properly and according to our specifications. When you purchase our products, you are agreeing to the terms and conditions outlined in our warranty section. We try our best to make recommendations, but the burden of proper installation, design, and maintenance relies on the purchaser. This limited warranty does not include product failures that are the result of: Not using a voltage regulated power supply to connect the LED product or controls; Connecting LED products to the wrong output voltage; Improper connection of power supplies, LED products, or controls; Connecting LED products or controls directly to any AC power source if they are stated for DC only input; Connecting power supplies backwards to an AC power source; Products used in an inappropriate location or in environmental conditions (temperature, humidity, moisture, etc.) outside the normal specified range; Water damage to products not specifically sold as waterproof products; Electrical power surges and spikes; Damage from hail, flooding, tornado, fire, wind, earthquake, lightning, electrical storm, or any other natural disasters or "force majeure" incidences; Damage caused by a vehicle or other accident; Damage caused when transporting the item; Damage to any products that were modified by the user, used for purposes other than as intended or directed, or connected to LED systems or components not purchased from Flexfire LEDs; Products that have been subjected to misuse, mishandling, misapplication or accident. Products used in connection with any components, devices or systems other than those explicitly approved as compatible with Company's products and listed on Company's website. Excessive wear and tear and/or physical or accidental abuse, loss, or theft. Improper repairs or warranty services performed by someone other than Flexfire LEDs will void this warranty.



**Toll Free Number:**  
1-844-353-9347



**Local Number:**  
(925) 273-9080



[info@flexfireleds.com](mailto:info@flexfireleds.com)



**FLEXFIRELEDs**

[www.flexfireleds.com](http://www.flexfireleds.com)