

# PRODUCT DATA SHEET

---

## UltraBright™ Architectural Series



15 Year  
Warranty



# Description

Our UltraBright™ Architectural Series is an excellent choice to meet the demand of architectural design and innovative lighting projects. We designed this LED strip with the market's leading components for incredibly brilliant luminance (519 lumen/ft), excellent color rendering and longer run lengths. This product is often paired with a variety of dimming options to allow its use in most applications, from high brightness to comfortable accents.

## Product Features

- High CRI of 80+
- Highest Brightness - Up to 519 Lumen/ft (1,703/Meter)
- Fully dimmable
- Highest quality components and premium packaged 3014 LEDs
- Single BIN LED selection to ensure color consistency (3-Step MacAdam)
- Thermally Resistant 3M VHB 4930 adhesive for long lasting bond
- 120° Beam Angle
- Efficiency up to 100 lm/W
- Only 3/8" (10mm) strip width
- Short LED pitch of 1/4" (7mm)
- 24v DC Input (12v available by special order)
- Can be cut every 2" (51mm)
- 42 LEDs / Foot (140 / Meter)
- Thick double layer 2 oz copper PCB for excellent thermal management
- Operating Temperature -4°F to +104°F (-20°C to 40°C)
- Maximum Length in Series 32ft 10in (10 Meters)

## Product Specific Specifications

Product. SKU	Color* (CCT)	Watts / foot (Meter)	Lumen / foot (Meter)	Luminous efficacy (Lumens / Watt)	CRI	Gamut Score Rg (Color Sat.)	Relative Fidelity Score (RF)
UB-AS-24K	2400K	5.1 W/ft 16.8 W/m	374 lm/ft (1,227 lm/m)	72 lm/W	81	Coming Soon	Coming Soon
UB-AS-27K	2700K	5.1 W/ft 16.8 W/m	457 lm/ft (1,500 lm/m)	88 lm/W	81	Coming Soon	Coming Soon
UB-AS-30K	3000K	5.1 W/ft 16.8 W/m	441 lm/ft (1,447 lm/m)	85 lm/W	81	95.3	82.4
UB-AS-42K	4200K	5.1 W/ft 16.8 W/m	471 lm/ft (1,545 lm/m)	91 lm/W	82	93.4	82.3
UB-AS-62K	6200K	5.1 W/ft 16.8 W/m	519 lm/ft (1,703 lm/m)	100 lm/W	83	95.6	80.8

\*CCT may be +/-100K but always ordered from same bin and will present no noticeable differences perceived by the human eye.

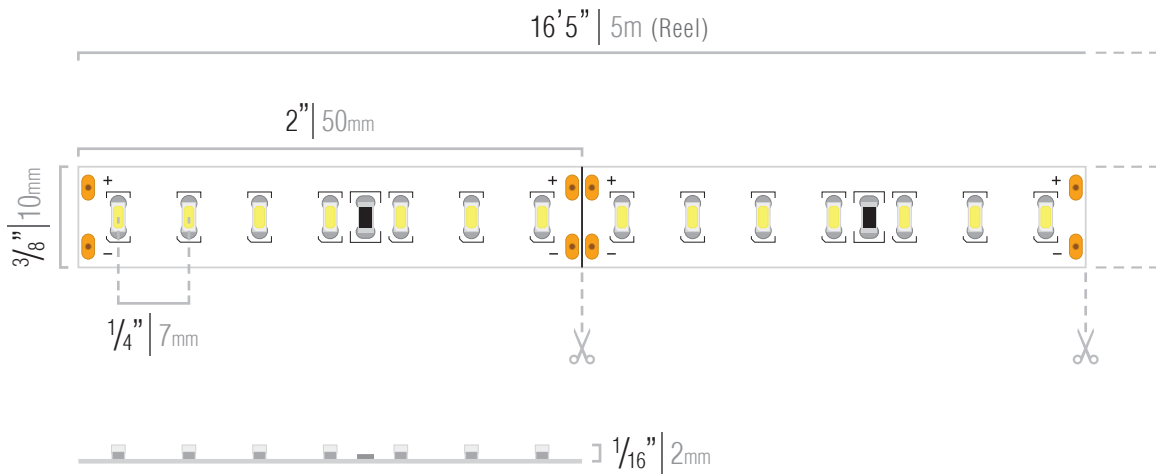
# Ordering Code

## INDOOR

Brand	Series	CCT	Voltage	Length
UB - UltraBright	AS - Architectural	24K - 2400K 27K - 2700K 30K - 3000K 42K - 4200K 62K - 6200K	24V 12V - (Special)	01 FT - Under 16 ft 16 FT - 16 ft Reel 98 FT - 98 ft Reel*

\* Only available in 27K and 30K.

# Dimensions

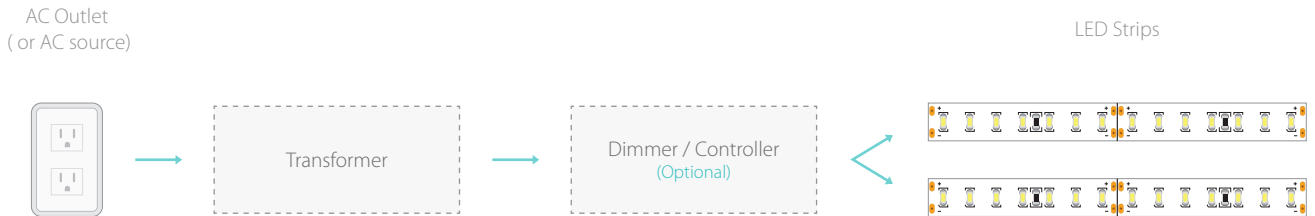


# Example Installation and Layout

## IN SERIES

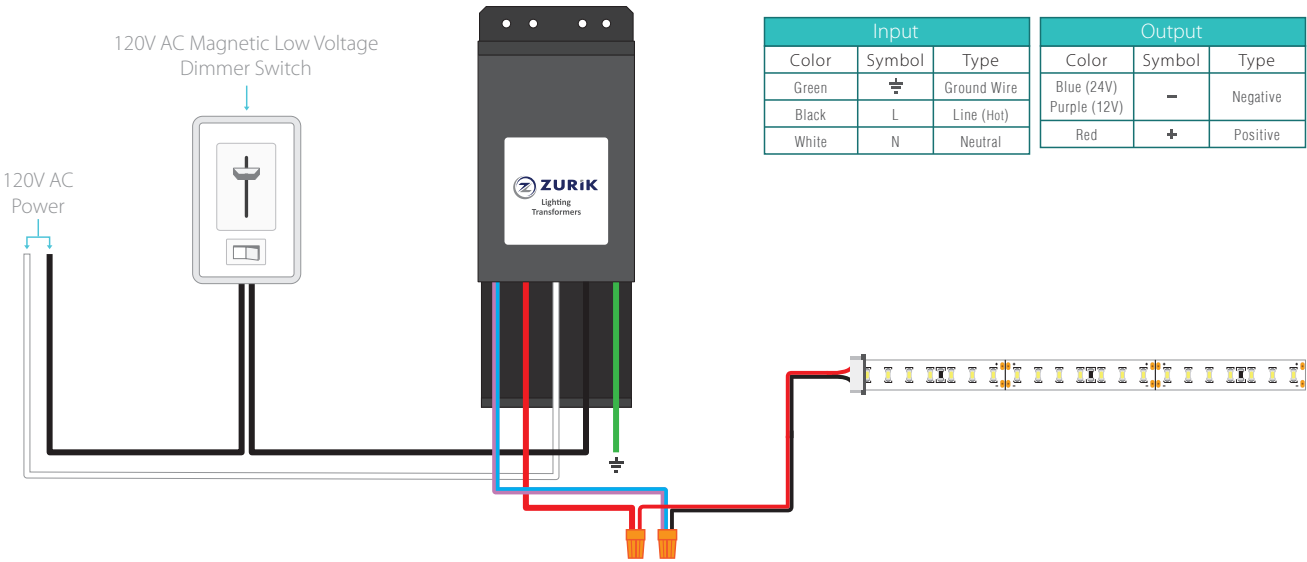


## IN PARALLEL

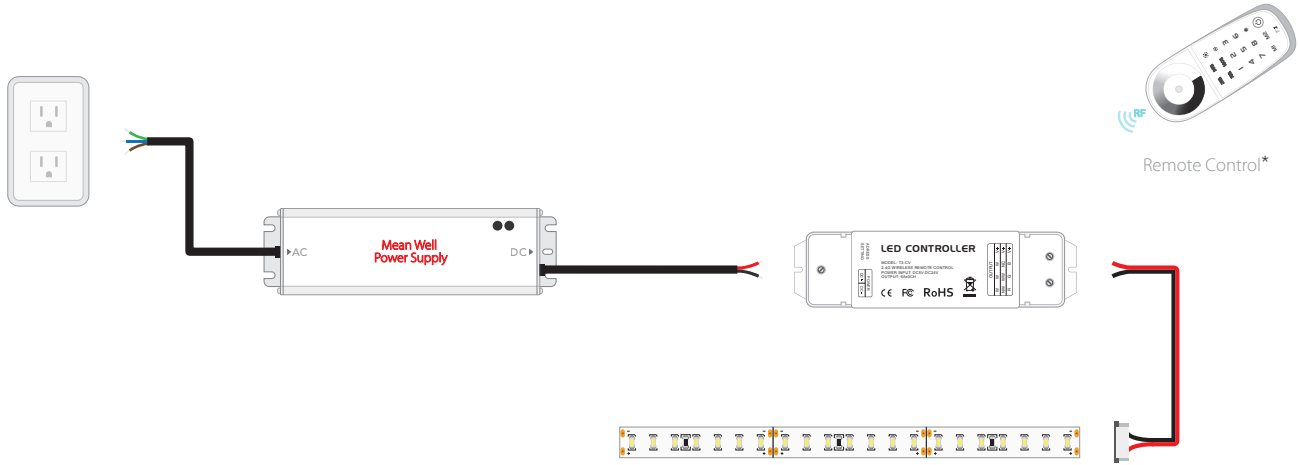


# Dimming Options

## Lutron Style Wall Dimmer



## In-Line Dimming



\* Remote Control (SKU: SC-MZ-CTRL) can be paired to 8 total receivers. Multiple remotes cannot be paired to a single receiver (max 1 remote per receiver).

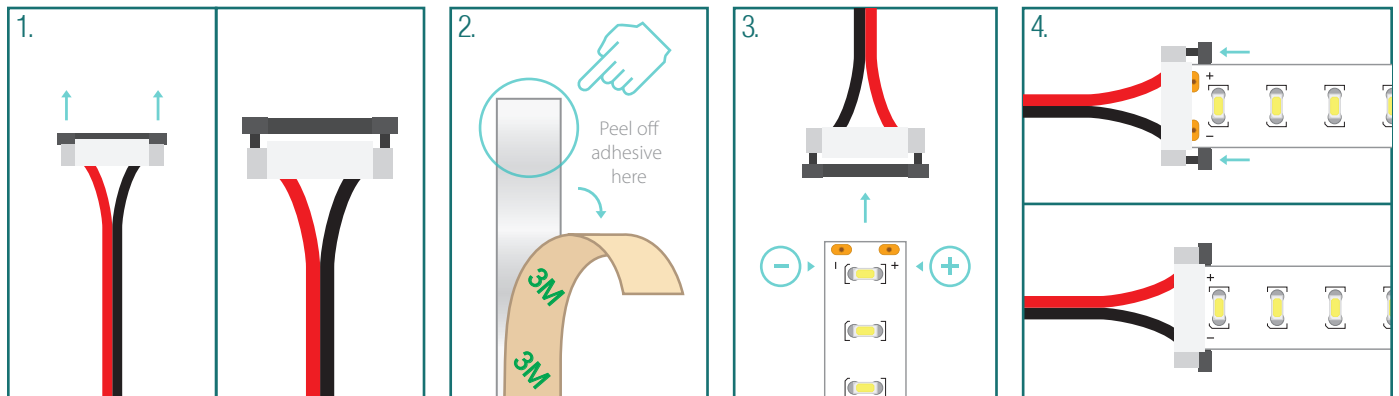
# Strip Light Connectors

SKU	Description	Wire Gauge	Amp Limit**	Mockup
UB-C1*	Attaches LED strip directly to a Power Supply/Driver, low voltage control or DC source.	22 AWG	5 Amps	
UB-C2*	Attaches two sections of LED strip together. Wire lead allows for turns around tight corners.	22 AWG		
UB-C3*	Attaches two sections of LED strip together in a continuous run.	-		

\* Calculate max length of LED strip to follow the solderless connector based on an amperage draw of 0.21 amps per foot (0.70 A/m) at 24 volts, or via special order at 12 volts use 0.43 A/ft (1.39 A/m).

\*\* The max continuous run of the Architectural Series LED strip is 32 feet (10 meters). Be sure no more than 5 amps is drawn after any solderless connector.

## Solderless Connection Guide

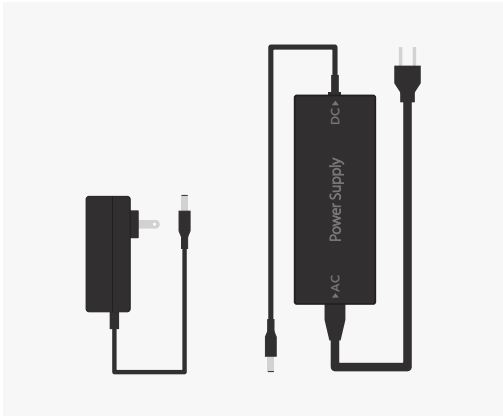


1. The solderless connectors have a plastic housing with a small black tray on the underside. Pull the black plastic tray out until the tray stops. The tray will only pull out approximately 2-3mm, dont try to pull it out farther. *See Diagram 1*
2. Remove 1/4" of 3M adhesive tape on the back from the end of the strip that you want to connect. It must be removed to allow it to fit properly with the solderless connector. *See Diagram 2*
3. Slide the connector into the end of the LED strip by holding the tray out as you slide it in. Make sure the tray does not move into a locked position until the connector is all the way in. *See Diagram 3*
4. Once the LED strip is inserted into the solderless connector, close the black tray underneath by pinching the wings on the side of the connector (inward, toward the connector's housing). *See Diagram 4*

NOTE: Soldering is the preferred method. If you need further assistance, please download our Solderless Connector Installation Guide from our website

# Compatible Drivers (24v only)

## Wall Mounted Power Supply / Desktop Power Supply



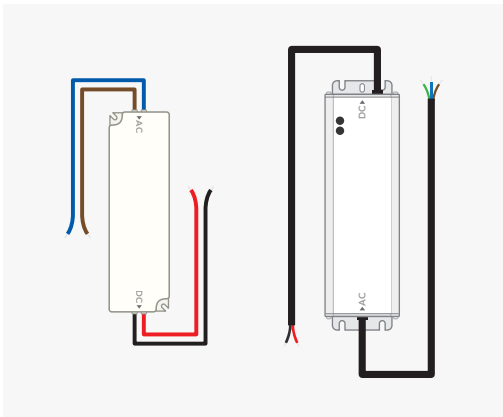
### LED Strip Length

- 1 - 4 ft
- 5 - 10 ft
- 10 - 16 ft
- 12 - 20 ft

### SKU

- 24V-WMPS-1
- 24V-DPS-2.5
- 24V-DPS-4
- 24V-DPS-5

## Mean Well



### LED Strip Length

- 1 - 3 ft
- 4 - 6 ft
- 6 - 10 ft
- 8 - 13 ft
- 10 - 16 ft
- 12 - 20 ft
- 18 - 30 ft
- 24 - 40 ft

### SKU

- LPV-20-24
- HLG-40H-24A
- HLG-60H-24A
- HLG-80H-24BL
- HLG-100H-24A
- HLG-120H-24A
- HLG-185H-24A
- HLG-240H-24A

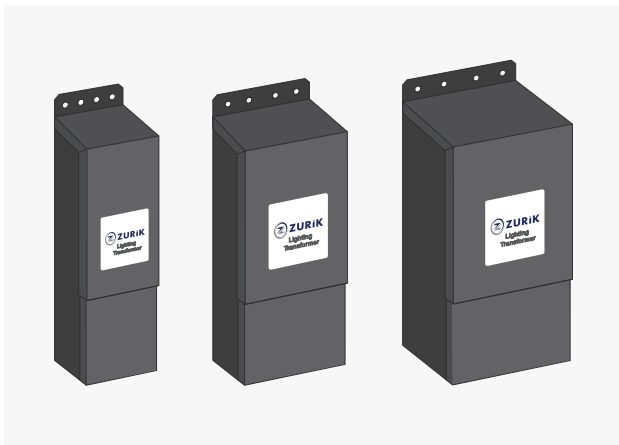
### LED Strip Length

- 32 - 54 ft
- 54 - 100 ft

### SKU

- HLG-320H-24A
- HLG-600H-24A

## Zurik



### LED Strip Length

- 2 - 3 ft
- 4 - 6 ft
- 5 - 8 ft
- 8 - 12 ft
- 10 - 16 ft
- 15 - 24 ft
- 20 - 32 ft
- 25 - 40 ft
- 30 - 50 ft

### SKU

- ZRK-20-24VDC
- ZRK-40-24VDC
- ZRK-50-24VDC
- ZRK-75-24VDC
- ZRK-100-24VDC
- ZRK-150-24VDC
- ZRK-200-24VDC
- ZRK-250-24VDC
- ZRK-300-24VDC

# Compatible Aluminum Extrusions

▶ KLUS GIP Anodized Extrusion (SKU: KL-B4574ANODA-1m)



**Covers**

- G-L Frosted Cover (SKU: KL-00413-1m)

**End Caps**

- GIP - L End Cap without Wire Hole (SKU: KL-00306)

**Mounting Accessories**

- GP Surface Spring (SKU: KL-00293)
  - minimum surface thickness 10mm (3/8")
- Mounting Bracket (SKU: KL-24143)

▶ GIZA Anodized Extrusion (SKU: KL-B5556ANODA-1m)



**Covers**

- HS 22 Clear Cover (SKU: KL-17022-1m)
- HS 22 Frosted Cover (SKU: KL-17011-1m)

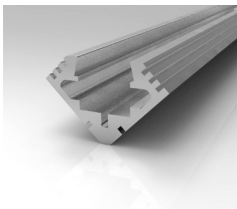
**End Caps**

- GIZA End Cap without Wire Hole (SKU: KL-24007)

**Mounting Accessories**

- GP Surface Spring (SKU: KL-00293)
  - minimum surface thickness 10mm (3/8")
- Mounting Bracket (SKU: KL-24143)

▶ 45-ALU Anodized Extrusion (SKU: KL-B4023ANODA-1m)



**Covers**

- HS Clear Cover (SKU: KL-1370-1m)t
- HS Frosted Cover (SKU: KL-1369-1m)
- LIGER Frosted Cover (SKU: KL-17031-1m)

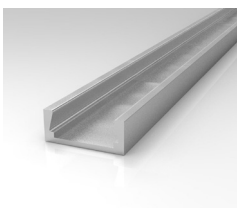
**End Caps**

- 45-ALU End Cap without Wire Hole (SKU: KL-1383)
- 45-ALU End Cap with Wire Hole (SKU: KL-1440)

**Mounting Accessories**

- Zinc Mounting Bracket (SKU: KL-1399)
  - NOTE:** All solderless connectors do not fit inside this aluminum extrusion.

▶ KLUS MICRO-ALU Anodized Extrusion (KL-B1888ANODA-1m)



**Covers**

- HS Clear Cover (SKU: KL-1370-1m)t
- HS Frosted Cover (SKU: KL-1369-1m)
- LIGER Frosted Cover (SKU: KL-17031-1m)

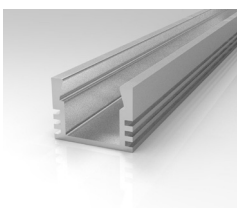
**End Caps**

- MICRO-ALU End Cap without Wire Hole (SKU: KL-1059)
- MICRO-ALU End Cap with Wire Hole (SKU: KL-1060)

**Mounting Accessories**

- Zinc Mounting Bracket (SKU: KL-1072)
  - NOTE:** All solderless connectors do not fit inside this aluminum extrusion.

▶ KLUS PDS4-ALU Anodized Extrusion (KL-B1718ANODA-1m)



**Covers**

- HS Clear Cover (SKU: KL-1370-1m)t
- HS Frosted Cover (SKU: KL-1369-1m)
- LIGER Frosted Cover (SKU: KL-17031-1m)

**End Caps**

- PDS4-ALU End Cap without Wire Hole (SKU: KL-1055)
- PDS4-ALU End Cap with Wire Hole (SKU: KL-1057)

**Mounting Accessories**

- Zinc Mounting Bracket (SKU: KL-1072)
  - NOTE:** All solderless connectors do not fit inside this aluminum extrusion.



# Safety And Disclosures

1. Installation must be in accordance with local and national electrical code regulations.
2. To ensure safety and correct installation, our strips are intended to be installed by a qualified, licensed electrician.
3. Only install with a Class 2 DC Constant Voltage LED driver to meet UL requirements.
4. Do not install in environment where excessive heat may exist.
5. LED strip lights must be handled with care. Excessive handling, bending, and pressure may damage the product, voiding the warranty.
6. Do not install indoor LED tape light products in outdoor / wet location environments. Only use copper wiring. Use wires rated for at least 176°F (80°C) and certified for use with external connection of electrical equipment.
7. Each maximum run requires a dedicated power feed from the driver. Do not extend beyond the recommended maximum run length.
8. Make sure the appropriate gauge wire is installed between driver, LEDs, and any dimmers. When choosing wire, calculate voltage drop, maximum amperage rating, and the location ratings on the wire. Improper wire selection and installation could overheat wires, and cause fire.
9. Do not modify product beyond instructions or warranty will be void.
10. We reserve the right to modify and improve the design of our fixtures without prior notice. Although we try our best to order the same colors every time, due to changes in technology and phosphors over time, we cannot guarantee to match existing installed fixtures for subsequent orders or replacements in regards to product appearance, CCT, or lumen output.

# Warranty Information

## Limited Warranty

This product has a 15 year limited warranty from the date of shipment. This warranty only includes the main product outlined in this specification sheet and does not include the additional accessories that are used as a reference. Complete warranty details for fixtures and additional accessories are available at <https://www.flexfireleds.com/warranties/> within the Policies section. For warranty related questions please contact product support team at ([support@flexfireleds.com](mailto:support@flexfireleds.com)).

## Consumer's Acknowledgment

Flexfire LEDs, Inc. stands behind its products when they are used properly and according to our specifications. When you purchase our products, you are agreeing to the terms and conditions outlined in our warranty section. We try our best to make recommendations, but the burden of proper installation, design, and maintenance relies on the purchaser.

## This limited warranty does not include product failures that are the result of:

Not using a voltage regulated power supply to connect the LED product or controls; Connecting LED products to the wrong output voltage; Improper connection of power supplies, LED products, or controls; Connecting LED products or controls directly to any AC power source if they are stated for DC only input; Connecting power supplies backwards to an AC power source; Products used in an inappropriate location or in environmental conditions (temperature, humidity, moisture, etc.) outside the normal specified range; Water damage to products not specifically sold as waterproof products; Electrical power surges and spikes; Damage from hail, flooding, tornado, fire, wind, earthquake, lightning, electrical storm, or any other natural disasters or "force majeure" incidences; Damage caused by a vehicle or other accident; Damage caused when transporting the item; Damage to any products that were modified by the user, used for purposes other than as intended or directed, or connected to LED systems or components not purchased from Flexfire LEDs; Products that have been subjected to misuse, mishandling, misapplication or accident. Products used in connection with any components, devices or systems other than those explicitly approved as compatible with Company's products and listed on Company's website. Excessive wear and tear and/or physical or accidental abuse, loss, or theft. Improper repairs or warranty services performed by someone other than Flexfire LEDs will void this warranty.